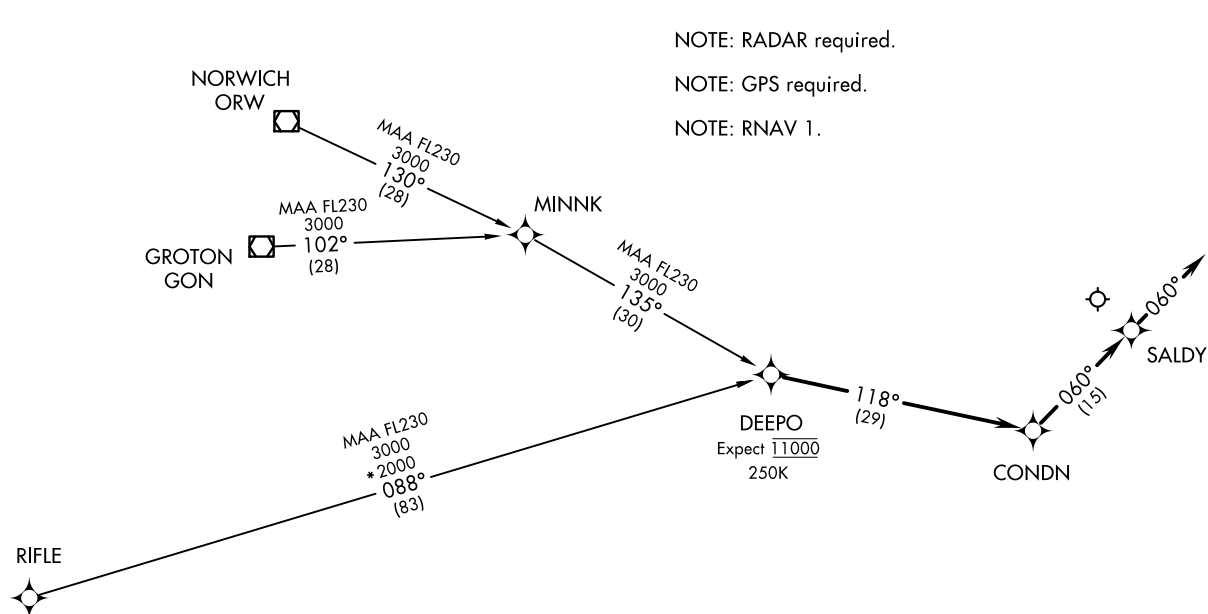


DEEPO ONE ARRIVAL (RNAV)
(DEEPO.DEEPO1) 10JUN04

BOSTON APP CON★
133.75 318.1
ATIS
127.5
NANTUCKET TOWER★
118.3 (CTAF)

GROTON TRANSITION (GON.DEEPO1)
NORWICH TRANSITION (ORW.DEEPO1)
RIFLE TRANSITION (RIFLE.DEEPO1)

... From DEEPO, via 118° track to CONDN; thence via 060° track to SALDY. Depart SALDY heading 060°, expect radar vectors to final approach course.



NOTE: RADAR required.
NOTE: GPS required.
NOTE: RNAV 1.



NOTE: Chart not to scale.

DEEPO.DEEPO1) 21112
DEEPO ONE ARRIVAL (RNAV)

AL-659 (FAA)

NANTUCKET MEML (A/CX)
NANTUCKET, MASSACHUSETTS

NANTUCKET, MASSACHUSETTS
NANTUCKET MEML (A/CX)

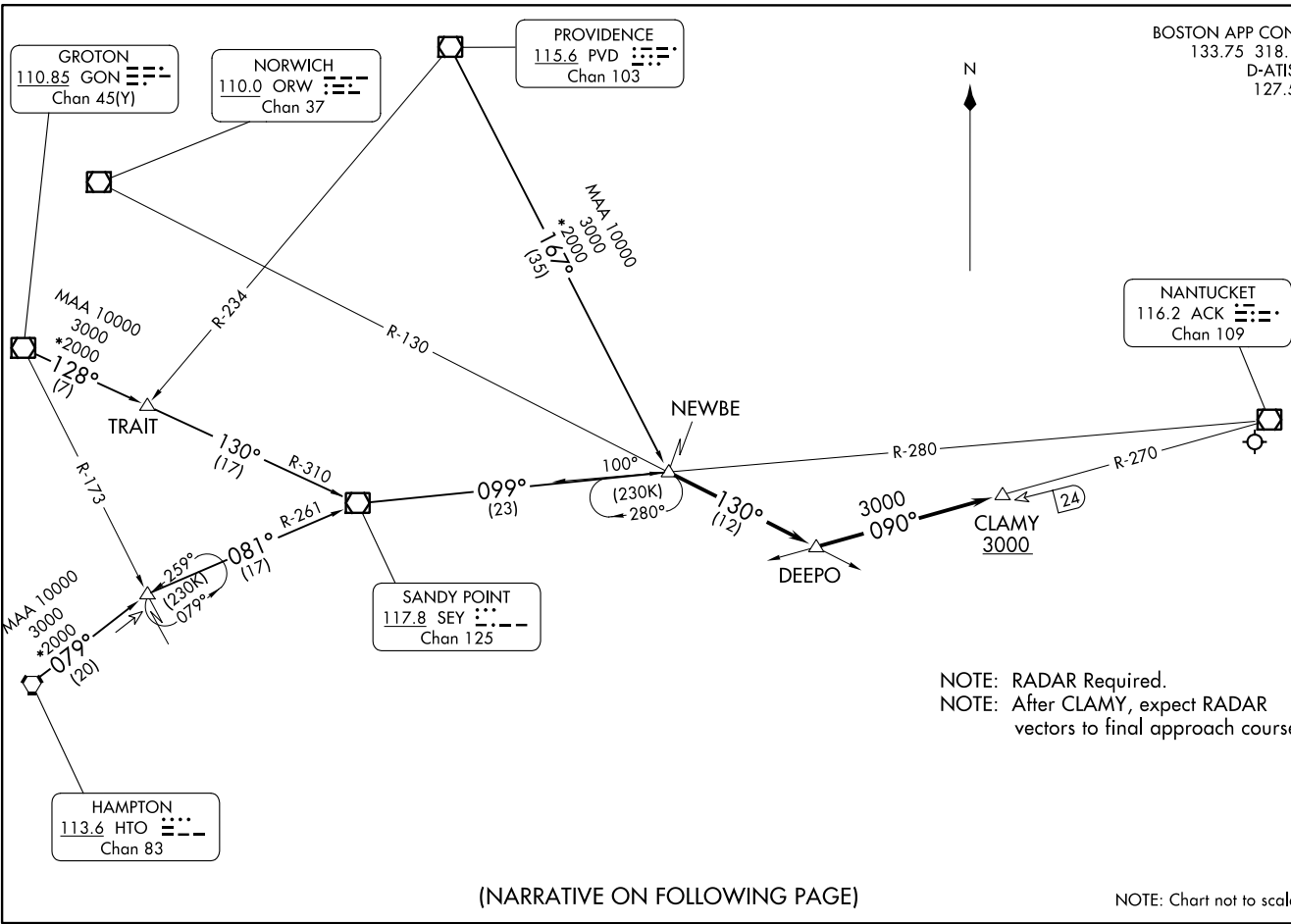
NEWBE THREE ARRIVAL
(NEWBE, NEWBE3) 120CT17

(NEWBE, NEWBE3) 24025
NEWBE THREE ARRIVAL

AL-659 (FAA)

NANTUCKET MEML (ACK)
NANTUCKET, MASSACHUSETTS

BOSTON APP CON*
133.75 318.1
D-ATIS
127.5



NANTUCKET, MASSACHUSETTS
NANTUCKET MEML (ACK)

(NARRATIVE ON FOLLOWING PAGE)

NOTE: Chart not to scale.

ARRIVAL DESCRIPTION

GROTON TRANSITION (GON.NEWBE3): From over GON VOR/DME on GON R-128 to TRAIT INT, then on SEY R-310 to SEY VOR/DME, then on SEY R-099 to NEWBE. Thence

HAMPTON TRANSITION (HTO.NEWBE3): From over HTO VORTAC on HTO R-079 to JORDN INT, then on SEY R-261 to SEY VOR/DME, then on SEY R-099 to NEWBE. Thence

PROVIDENCE TRANSITION (PVD.NEWBE3): From over PVD VOR/DME on PVD R-167 to NEWBE. Thence

. . . . From over NEWBE on ORW R-130 to DEEPO, then on ACK R-270 to cross CLAMY at or above 3000. After CLAMY, expect vectors to the final approach course.

NE-1, 22 FEB 2024 to 21 MAR 2024

NE-1, 22 FEB 2024 to 21 MAR 2024