

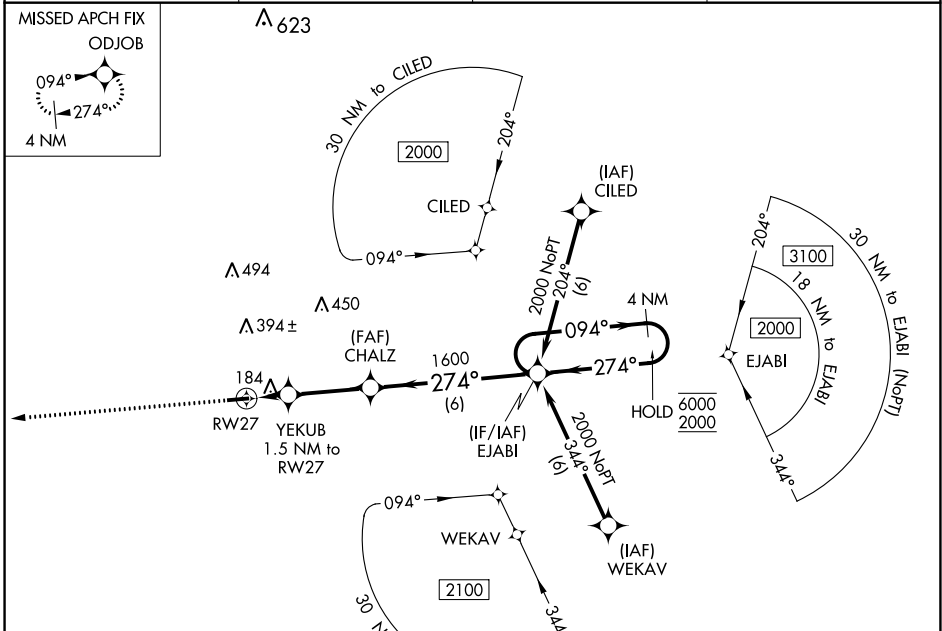
WAAS CH <b>53336</b> <b>W27A</b>	APP CRS <b>274°</b>	Rwy Idg TDZE <b>36</b> Apt Elev <b>38</b>	<b>4002</b>
--	------------------------	---	-------------

# RNAV (GPS) RWY 27

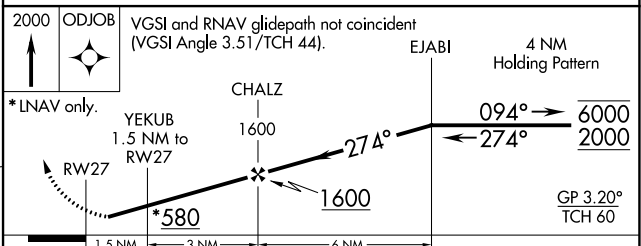
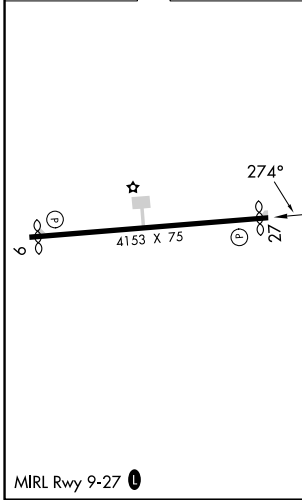
HENDERSON FLD (ACZ)

RNP APCH. **▼** Circling Rwy 9 NA at night. Rwy 27 helicopter visibility reduction below 3/4 SM NA. **▲ NA** Baro-VNAV NA. Use Wilmington altimeter setting; when not received, use Kenansville altimeter setting. MISSED APPROACH: Climb to 2000 direct ODJOB and hold.

AWOS-3P <b>121.07</b>	ILM ASOS <b>124.975</b>	WILMINGTON APP CON * <b>135.75 317.425</b>	UNICOM <b>122.8 (CTAF) 0</b>
--------------------------	----------------------------	---	---------------------------------



ELEV 38	TDZE 36
---------	---------



2000 ODJOB	VGSI and RNAV glidepath not coincident (VGSI Angle 3.51/TCH 44).			
*LNAV only.	YEKUB 1.5 NM to RWY 27	CHALZ 1600	EJABI	4 NM Holding Pattern
	1.5 NM	3 NM	6 NM	
CATEGORY	A	B	C	D
LPV DA	406-1 370 (400-1)			NA
LNAV/VNAV DA	599-1 3/4 563 (600-1 3/4)		NA	
LNAV MDA	560-1 524 (600-1)		560-1 1/2 524 (600-1 1/2)	
<b>C</b> CIRCLING	620-1 582 (600-1)		820-2 1/4 782 (800-2 1/4) 820-2 1/2 782 (800-2 1/2)	

SE-2, 22 FEB 2024 to 21 MAR 2024

SE-2, 22 FEB 2024 to 21 MAR 2024

WAAS CH <b>93536</b> <b>W09A</b>	APP CRS <b>094°</b>	Rwy Idg TDZE Apt Elev	<b>4004</b> <b>38</b> <b>38</b>
--	------------------------	-----------------------------	---------------------------------------

# RNAV (GPS) RWY 9

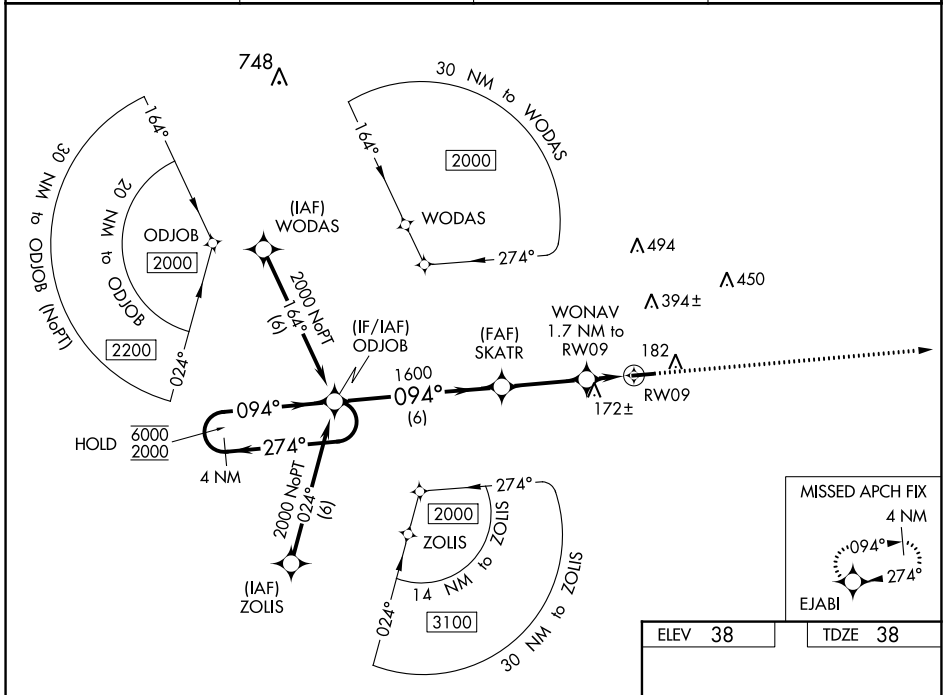
HENDERSON FLD (ACZ)

RNP APCH.

▼ Rwy 9 helicopter visibility reduction below 1 SM NA. Baro-VNAV NA.  
 ▲ NA Use Wilmington altimeter setting; when not received, use Kenansville altimeter setting.  
 Straight-in and Circling Rwy 9 NA at night.

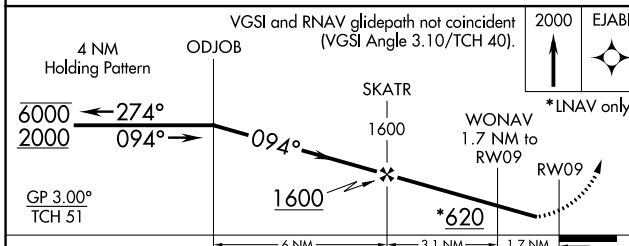
MISSED APPROACH: Climb to 2000 direct EJABI and hold.

AWOS-3P <b>121.07</b>	ILM ASOS <b>124.975</b>	WILMINGTON APP CON * <b>135.75 317.425</b>	UNICOM <b>122.8 (CTAF) 0</b>
--------------------------	----------------------------	---	---------------------------------



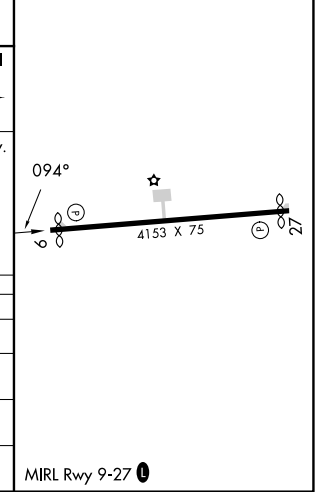
SE-2, 22 FEB 2024 to 21 MAR 2024

SE-2, 22 FEB 2024 to 21 MAR 2024



ELEV 38	TDZE 38
---------	---------

CATEGORY	A	B	C	D
LPV DA		401-1	363 (400-1)	
LNAV/VNAV DA		538-1½	500 (500-1½)	
LNAV MDA	500-1	462 (500-1)	500-1¾	462 (500-1¾)
CIRCLING	620-1	582 (600-1)	820-2¼ 782 (800-2¼)	820-2½ 782 (800-2½)



MIRL Rwy 9-27 0