

(CHATT6.CHATT) 23166

AL-27 (FAA)

AUGUSTA RGNL AT BUSH FLD (AGS)
AUGUSTA, GEORGIA

CHATT SIX DEPARTURE (RNAV)

ATIS
132.75
CLNC DEL
118.65
GND CON
121.9 348.6
AUGUSTA TOWER *
118.7 (CTAF) 239.3
AUGUSTA DEP CON *
126.8 270.3

**TOP ALTITUDE:
ASSIGNED BY ATC**

GREENSBORO
GSO

HOGAP

12000
*3100
043°
(147)

12000
*2400
014°
(65)

CHATT

3000
*1900
(70)

SWANG

3000
*2000
032°
(110)

BRDYE

TAKEOFF MINIMUMS

- Rwy 8: Standard with minimum climb of 392' per NM to 2600.
- Rwy 17: Standard with minimum climb of 267' per NM to 2400.
- Rwy 26: Standard with minimum climb of 324' per NM to 2000.
- Rwy 35: Standard with minimum climb of 305' per NM to 2500.

- NOTE: RADAR and GPS required.
- NOTE: RNAV 1.
- NOTE: Do not exceed 250K until advised by ATC.
- NOTE: For turbojet aircraft during Masters golf tournament week.
- NOTE: Use 118.2 for CLNC DEL during Masters golf tournament week.



NOTE: Chart not to scale.



DEPARTURE ROUTE DESCRIPTION

TAKEOFF RUNWAYS 8, 17, 26, 35: Climb on assigned heading for RADAR vectors to BRDYE, then on depicted route to CHATT, thence. . . .
. . . .maintain altitude assigned by ATC. Expect clearance to filed altitude/flight level within 10 minutes after departure.

GREENSBORO TRANSITION (CHATT6.GSO)
HOGAP TRANSITION (CHATT6.HOGAP)

CHATT SIX DEPARTURE (RNAV)
(CHATT6.CHATT) 29MAR18

AUGUSTA, GEORGIA
AUGUSTA RGNL AT BUSH FLD (AGS)

SE-4, 22 FEB 2024 to 21 MAR 2024

SE-4, 22 FEB 2024 to 21 MAR 2024

**TOP ALTITUDE:
ASSIGNED BY ATC**

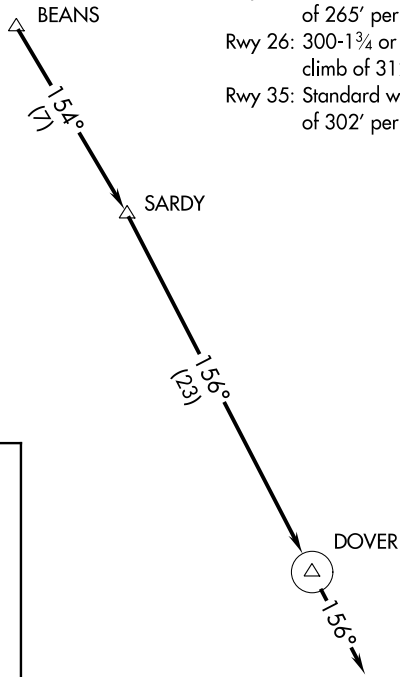
TAKEOFF MINIMUMS

Rwy 8: Standard with minimum climb of 394' per NM to 2500.

Rwy 17: Standard with minimum climb of 265' per NM to 2400.

Rwy 26: 300-1¾ or standard with minimum climb of 312' per NM to 2000.

Rwy 35: Standard with minimum climb of 302' per NM to 2500.



- NOTE: DME/DME/IRU or GPS required.
- NOTE: RADAR required for non-GPS equipped aircraft.
- NOTE: RNAV 1.
- NOTE: For turbojet aircraft during Masters golf tournament week.
- NOTE: Do not exceed 250K until advised by ATC.

DEPARTURE ROUTE DESCRIPTION

TAKEOFF RUNWAYS 8, 17, 26, 35: Climb heading assigned by ATC for vectors to BEANS, then on depicted route to DOVER, then on heading 156° for RADAR vectors. Thence. . . .

. . . .maintain altitude assigned by ATC. Expect clearance to filed altitude/flight level within 10 minutes after departure.

NOTE: Chart not to scale.

(DOVER5.DOVER) 21168
 DOVER FIVE DEPARTURE (RNAV) A1-27 (FAA)
 AUGUSTA RGNL AT BUSH FLD (AGS)
 AUGUSTA, GEORGIA

DOVER FIVE DEPARTURE (RNAV)
 (DOVER5.DOVER) 28FEB19
 AUGUSTA RGNL AT BUSH FLD (AGS)
 AUGUSTA, GEORGIA

JUNPR SIX DEPARTURE (RNAV)

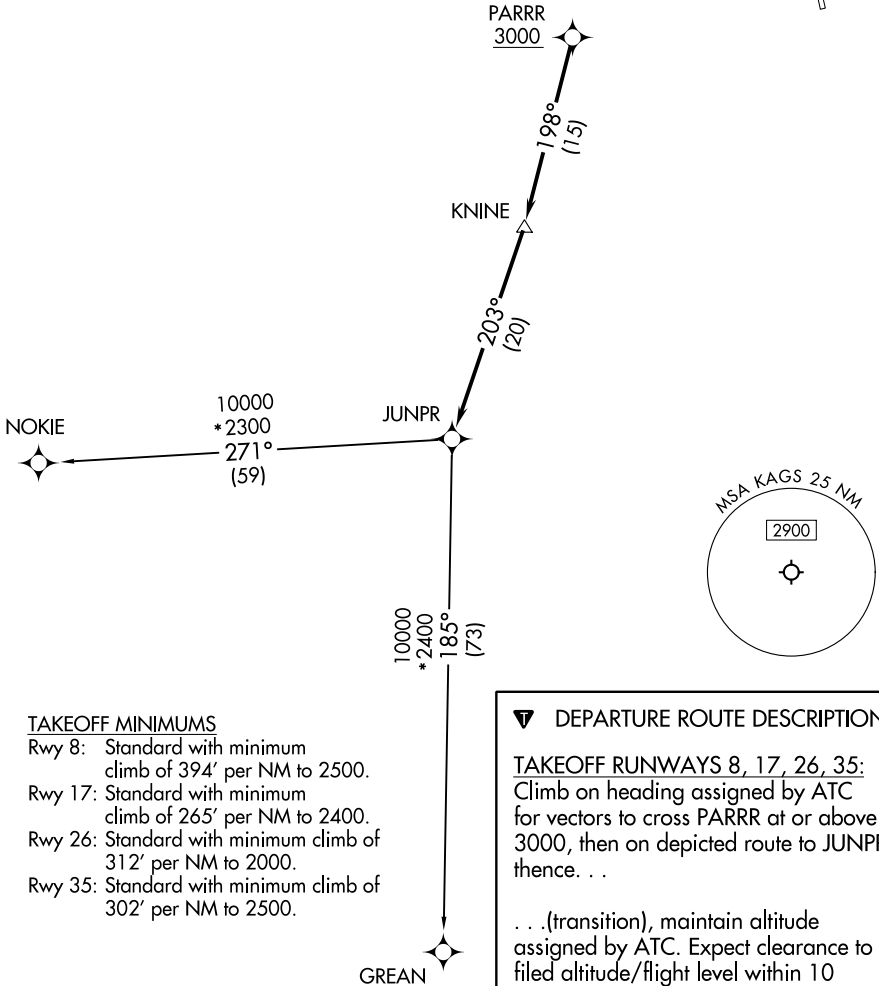
AUGUSTA, GEORGIA

**TOP ALTITUDE:
ASSIGNED BY ATC**

RNAV 1 - DME/DME/IRU or GPS required.
RADAR required.

AUGUSTA DEP CON ★
126.8 270.3
CLNC DEL
118.65
AUGUSTA TOWER ★
118.7 (CTAF) 239.3

NOTE: Do not exceed 250K until advised by ATC.



TAKEOFF MINIMUMS

- Rwy 8: Standard with minimum climb of 394' per NM to 2500.
- Rwy 17: Standard with minimum climb of 265' per NM to 2400.
- Rwy 26: Standard with minimum climb of 312' per NM to 2000.
- Rwy 35: Standard with minimum climb of 302' per NM to 2500.

▼ DEPARTURE ROUTE DESCRIPTION

TAKEOFF RUNWAYS 8, 17, 26, 35:
Climb on heading assigned by ATC for vectors to cross PARRR at or above 3000, then on depicted route to JUNPR, thence. . .

. . . (transition), maintain altitude assigned by ATC. Expect clearance to filed altitude/flight level within 10 minutes after departure.

GREAN TRANSITION (JUNPR6.GREAN)
NOKIE TRANSITION (JUNPR6.NOKIE)

NOTE: Chart not to scale.

JUNPR SIX DEPARTURE (RNAV)

(JUNPR6..JUNPR) 14JUL22

AUGUSTA, GEORGIA

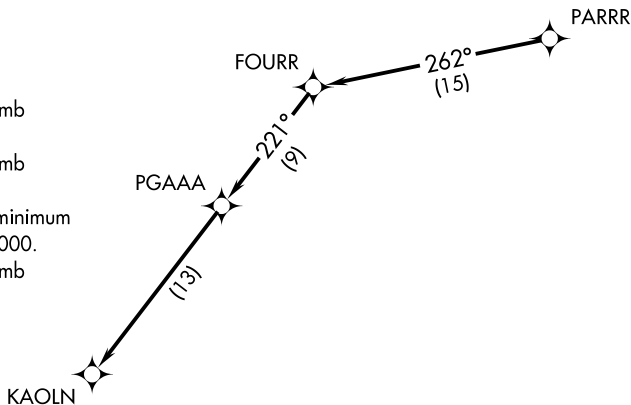
AUGUSTA RGNL AT BUSH FLD (AGS)

SE-4, 22 FEB 2024 to 21 MAR 2024

SE-4, 22 FEB 2024 to 21 MAR 2024

**TOP ALTITUDE:
ASSIGNED BY ATC**

- NOTE: DME/DME/IRU or GPS required.
- NOTE: RADAR required for non-GPS equipped aircraft.
- NOTE: RNAV 1.
- NOTE: For use during Masters golf tournament week only.
- NOTE: Do not exceed 250K until advised by ATC.



TAKEOFF MINIMUMS

- Rwy 8: Standard with minimum climb of 394' per NM to 2500.
- Rwy 17: Standard with minimum climb of 265' per NM to 2400.
- Rwy 26: 300-1¾ or standard with minimum climb of 312' per NM to 2000.
- Rwy 35: Standard with minimum climb of 302' per NM to 2500.

NOTE: Chart not to scale.

DEPARTURE ROUTE DESCRIPTION

TAKEOFF RUNWAYS 8, 17, 26, 35: Climb on assigned heading for RADAR vectors to PARRR, then on depicted route to KAOLN, thence. . . .

. . . .maintain altitude assigned by ATC. Expect clearance to filed altitude/flight level within 10 minutes after departure.

KAOLN SIX DEPARTURE (RNAV)
(KAOLN6:KAOLN) 28FEB19

AUGUSTA, GEORGIA
AUGUSTA RGNL AT BUSH FLD (AGS)

(KAOLN6:KAOLN) 21168
KAOLN SIX DEPARTURE (RNAV)

AUGUSTA, GEORGIA
AUGUSTA RGNL AT BUSH FLD (AGS)

A1-27 (FAA)

(RDBUD4.RDBUD) 21168

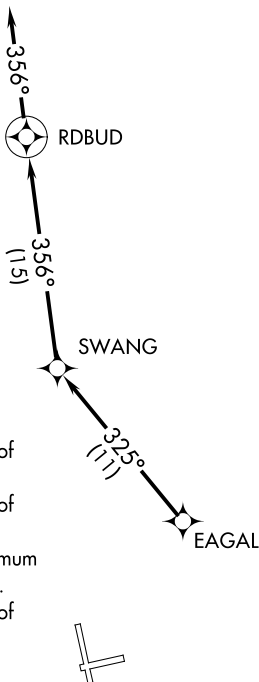
AL-27 (FAA)

AUGUSTA RGNL AT BUSH FLD (AGS)
AUGUSTA, GEORGIA

RDBUD FOUR DEPARTURE (RNAV)

AUGUSTA DEP CON ★
126.8 270.3
CLNC DEL
118.65
AUGUSTA TOWER ★
118.7 (CTAF) 239.3

**TOP ALTITUDE:
ASSIGNED BY ATC**



TAKEOFF MINIMUMS

- Rwy 8: Standard with minimum climb of 394' per NM to 2500.
- Rwy 17: Standard with minimum climb of 265' per NM to 2400.
- Rwy 26: 300-1¾ or standard with minimum climb of 312' per NM to 2000.
- Rwy 35: Standard with minimum climb of 302' per NM to 2500.

- NOTE: DME/DME/IRU or GPS required.
- NOTE: RADAR required.
- NOTE: RNAV 1.
- NOTE: For Prop aircraft only during Masters golf tournament week.
- NOTE: Do not exceed 250K until advised by ATC.

NOTE: Chart not to scale.

SE-4, 22 FEB 2024 to 21 MAR 2024

SE-4, 22 FEB 2024 to 21 MAR 2024



DEPARTURE ROUTE DESCRIPTION

TAKEOFF RUNWAYS 8, 17, 26, 35: Climb heading assigned by ATC for vectors to EAGAL. Then on depicted route to RDBUD, then on heading 356° for RADAR vectors, thence. . . .

. . . .maintain altitude assigned by ATC. Expect clearance to filed altitude/flight level within 10 minutes after departure.

RDBUD FOUR DEPARTURE (RNAV)

(RDBUD4.RDBUD) 28FEB19

AUGUSTA, GEORGIA
AUGUSTA RGNL AT BUSH FLD (AGS)

(SAMMI4.SAMMI) 21168

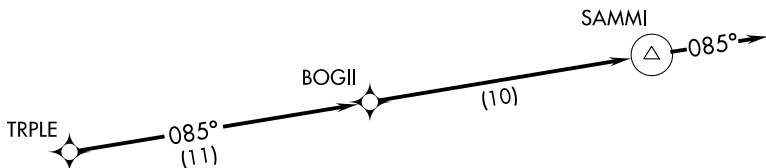
AL-27 (FAA)

AUGUSTA RGNL AT BUSH FLD (AGS)
AUGUSTA, GEORGIA

SAMMI FOUR DEPARTURE (RNAV)

AUGUSTA TOWER ★
118.7 (CTAF) 239.3
AUGUSTA DEP CON ★
126.8 270.3
CLNC DEL
118.65

**TOP ALTITUDE:
ASSIGNED BY ATC**



NOTE: RADAR and GPS required.
NOTE: RNAV 1.
NOTE: Do not exceed 250K until advised by ATC.

TAKEOFF MINIMUMS

Rwy 8: Standard with minimum climb of 392' per NM to 2600.
Rwy 17: Standard with minimum climb of 267' per NM to 2400.
Rwy 26: Standard with minimum climb of 324' per NM to 2000.
Rwy 35: Standard with minimum climb of 305' per NM to 2500.



NOTE: Chart not to scale.

DEPARTURE ROUTE DESCRIPTION

TAKEOFF RUNWAYS 8, 17, 26, 35: Climb on assigned heading for RADAR vectors to TRPLE. Then on depicted route to SAMMI. Then on heading 085° for RADAR vectors. Thence. . . .

. . . .maintain altitude assigned by ATC. Expect clearance to filed altitude/flight level within 10 minutes after departure.

SAMMI FOUR DEPARTURE (RNAV)
(SAMMI4.SAMMI) 29MAR18

AUGUSTA, GEORGIA
AUGUSTA RGNL AT BUSH FLD (AGS)

SE-4, 22 FEB 2024 to 21 MAR 2024

SE-4, 22 FEB 2024 to 21 MAR 2024