

LOC I-AOH 109.3	APP CRS 276°	Rwy Idg TDZE Apt Elev	6000 975 975
---------------------------	------------------------	-----------------------------	---

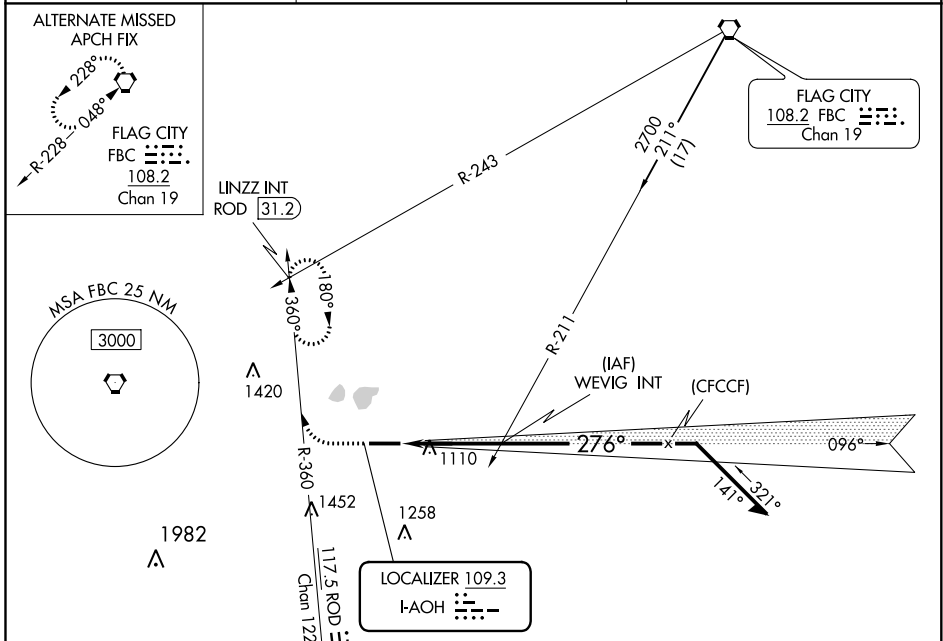
ILS or LOC RWY 28

LIMA ALLEN COUNTY (AOH)

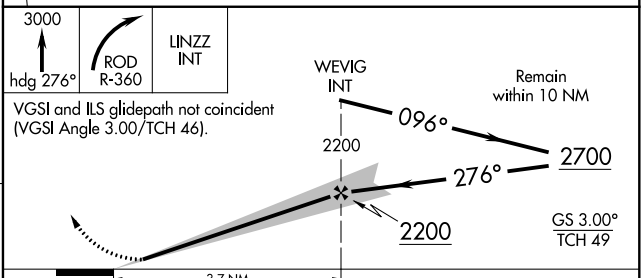
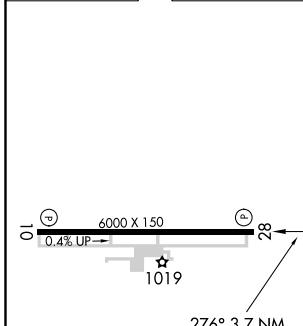
NA When local altimeter setting not received, use Findlay altimeter setting and increase all DA/MDA 80 feet. Increase ILS all Cats visibility 1/8 mile, S-LOC Cat C/D and Circling Cat C visibility 1/4 mile.

MISSED APPROACH: Climb to 3000 on heading 276° and right turn on ROD VORTAC R-360 to LINZZ INT/ROD 31.2 DME and hold.

ASOS 128.725	COLUMBUS APP CON 118.425 323.15	UNICOM 122.7 (CTAF) 0
------------------------	---	---------------------------------



ELEV 975	TDZE 975
----------	----------



REIL Rwy 10 and 28	1019				
HIRL Rwy 10-28	1019				
FAF to MAP 3.7 NM					
Knots	60	90	120	150	180
Min:Sec	3:42	2:28	1:51	1:29	1:14
CATEGORY	A	B	C	D	
S-ILS 28	1175-3/4		200 (200-3/4)		
S-LOC 28	1500-1	525 (600-1)	1500-1 1/2	525 (600-1 1/2)	
CIRCLING	1500-1	525 (600-1)	1500-1 1/2	1540-2	565 (600-2)

EC-2, 25 FEB 2021 to 25 MAR 2021

EC-2, 25 FEB 2021 to 25 MAR 2021

LIMA, OHIO

AL-5143 (FAA)

20030

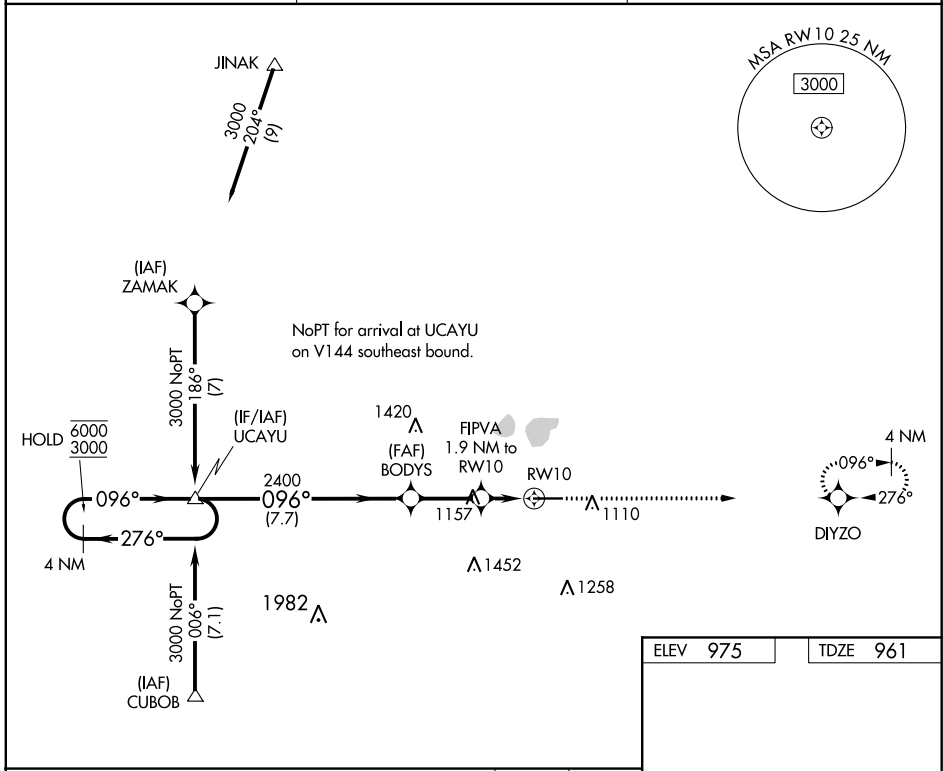
WAAS CH 65816 W10A	APP CRS 096°	Rwy Idg TDZE Apt Elev	6000 961 975
--	------------------------	-----------------------------	---

RNAV (GPS) RWY 10

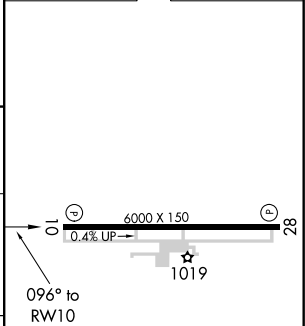
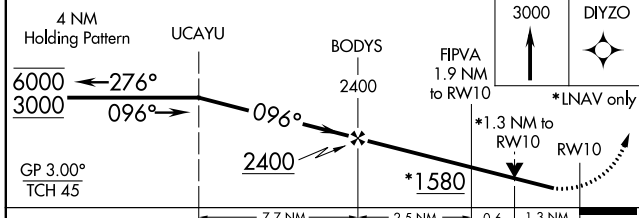
LIMA ALLEN COUNTY (AOH)

RNP APCH.	Rwy 10 helicopter visibility reduction below 3/4 SM NA. For uncompensated Baro-VNAV systems, LNAV/VNAV NA below -16°C or above 54°C.	MISSED APPROACH: Climb to 3000 direct DIYZO and hold.
-----------	--	---

ASOS 128.725	COLUMBUS APP CON 118.425 323.15	UNICOM 122.7 (CTAF) 0
------------------------	---	---------------------------------



ELEV 975	TDZE 961
----------	----------



CATEGORY	A	B	C	D
LPV DA	1211-1 250 (300-1)			
LNAV/VNAV DA	1272-1 311 (300-1)			
LNAV MDA	1420-1 459 (500-1)		1420-1 3/8 459 (500-1 3/8)	

REIL Rwy 10 and 28 \bullet
HIRL Rwy 10-28 \bullet

EC-2, 25 FEB 2021 to 25 MAR 2021

EC-2, 25 FEB 2021 to 25 MAR 2021

LIMA, OHIO
Amdt 1C 30JAN20

40°42'N-84°02'W

LIMA ALLEN COUNTY (AOH) RNAV (GPS) RWY 10

WAAS CH 50511 W28A	APP CRS 276°	Rwy Idg TDZE Apt Elev	6000 975 975
--	------------------------	-----------------------------	---

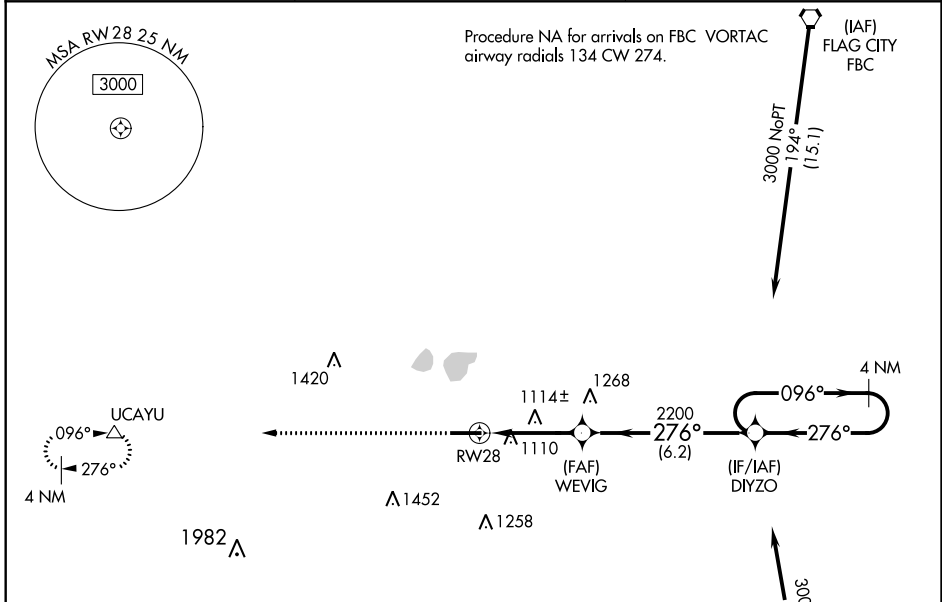
RNAV (GPS) RWY 28

LIMA ALLEN COUNTY (AOH)

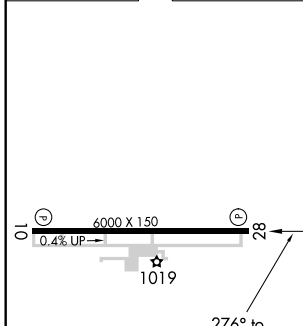
⚠ Baro-VNAV NA when using Findlay altimeter setting. For uncompensated Baro-VNAV systems, LNAV/VNAV NA below -16°C (4°F) or above 37°C (98°F). When local altimeter setting not received, use Findlay altimeter setting and increase all DA and MDA 80 feet. Increase LPV all Cats visibility 1/8 mile, LNAV/VNAV all Cats and LNAV Cats C/D visibility 1/4 mile. DME/DME RNP-0.3 NA. VDP NA with Findlay altimeter setting.

MISSED APPROACH:
Climb to 3000 direct UCAYU and hold.

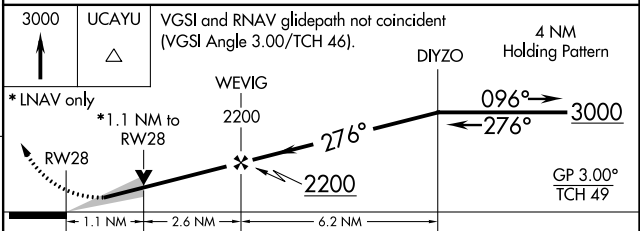
ASOS 128.725	COLUMBUS APP CON 118.425 323.15	UNICOM 122.7 (CTAF) 0
------------------------	---	---------------------------------



ELEV 975	TDZE 975
----------	----------



Procedure NA for arrivals at BUZZI on V144 eastbound and V416-542 southwest bound.



CATEGORY	A	B	C	D
LPV DA		1175-3/4	200 (200-3/4)	
LNAV/VNAV DA		1397-1 3/8	422 (500-1 3/8)	
LNAV MDA	1380-1	405 (500-1)	1380-1 1/8	405 (500-1 1/8)
CIRCLING	1420-1 445 (500-1)	1440-1 465 (500-1)	1440-1 1/2 465 (500-1 1/2)	1540-2 565 (600-2)

EC-2, 25 FEB 2021 to 25 MAR 2021

EC-2, 25 FEB 2021 to 25 MAR 2021