

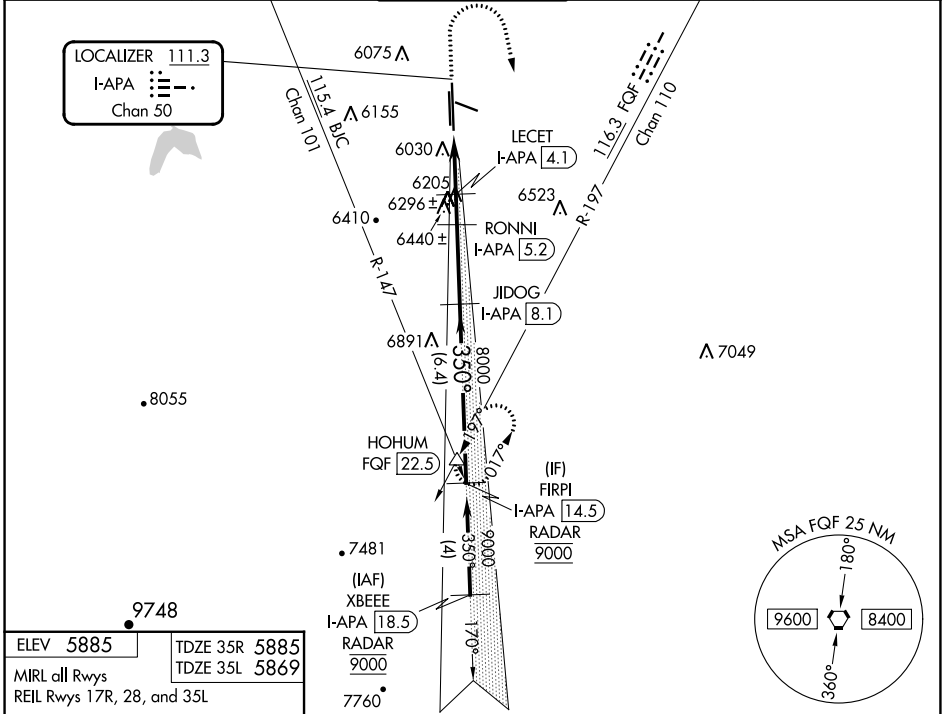
LOC/DME I-APA 111.3 Chan 50	APP CRS 350°	Rwy Idg 10001	35R 7001	35L 5885
		TDZE 5885	5869	
		Apt Elev 5885	5885	

ILS or LOC RWY 35R

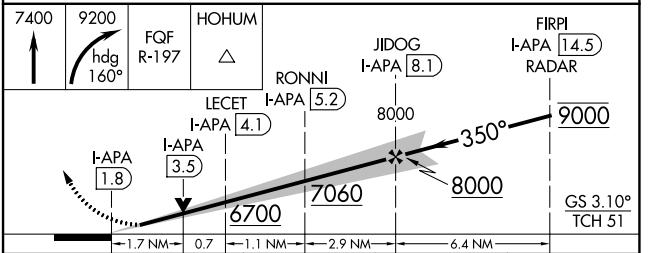
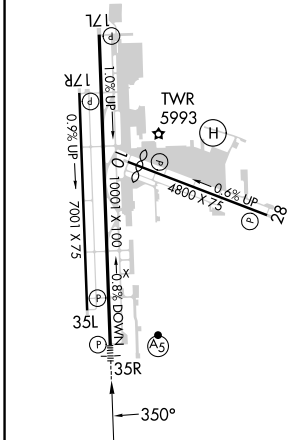
CENTENNIAL (APA)

DME required for LOC only. RADAR required for procedure entry.		MAJRS Rwy 35R	MISSED APPROACH: Climb to 7400 then climbing right turn to 9200 on heading 160° and FQF VORTAC R-197 to HOHUM INT/FQF 22.5 DME and hold.
<p>▼ Rwy 35L helicopter visibility reduction below 1 SM NA. For inop ALS, increase S-LOC 35R Cat C/D visibility to 1½ SM. Sidestep and Circling Rwy 35L NA at night.</p>			

ATIS 120.3	DENVER APP CON 132.75 269.3	CENTENNIAL TOWER 118.9	GND CON 121.8	CLNC DEL 128.6
----------------------	---------------------------------------	----------------------------------	-------------------------	--------------------------



ELEV 5885	TDZE 35R 5885
MIRL all Rwys	TDZE 35L 5869
REIL Rwy 17R, 28, and 35L	



CATEGORY	A	B	C	D
S-ILS 35R	6085-½ 200 (200-½)			
S-LOC 35R	6460-½	575 (600-½)	6460-1¼	575 (600-1¼)
SIDESTEP 35L	6460-1	591 (600-1)	6460-1½	6460-2 591 (600-2)
CIRCLING	6460-1 575 (600-1)	6540-1 655 (700-1)	6740-2½ 855 (900-2½)	6760-2¾ 875 (900-2¾)

WAAS CH 82107 W28A	APP CRS 283°	Rwy Idg TDZE Apt Elev	4800 5813 5885
--	------------------------	-----------------------------	---

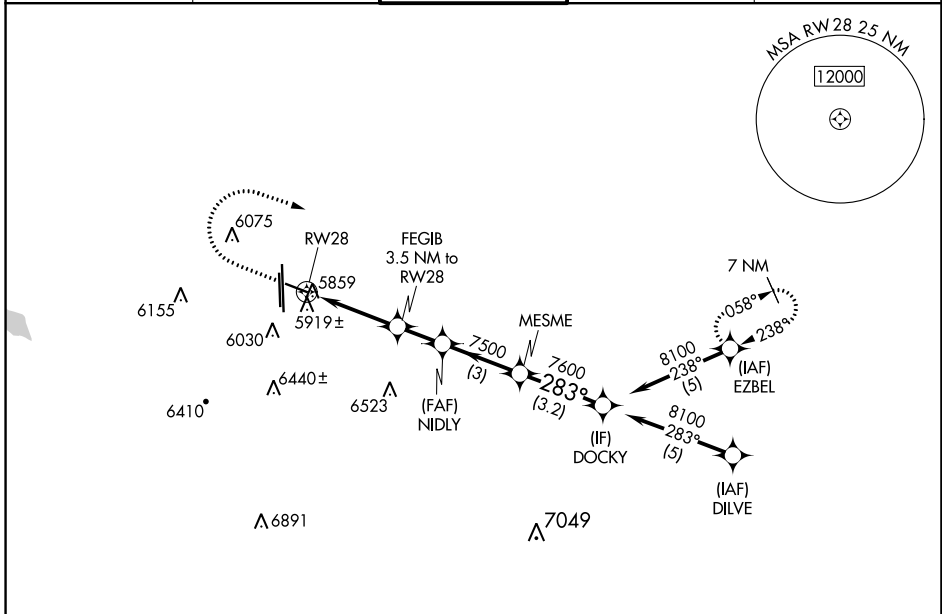
RNAV (GPS) RWY 28

CENTENNIAL (APA)

RNP APCH.
 ▼ For uncompensated Baro-VNAV systems, LNAV/VNAV NA below -26°C or above 49°C. Rwy 28 helicopter visibility reduction below 3/4 SM NA. Circling Rwy 35L NA at night.

MISSED APPROACH: Climb to 6400 then climbing right turn to 9000 direct EZBEL and hold.

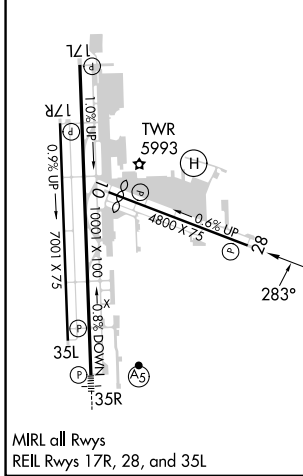
ATIS 120.3	DENVER APP CON 132.75 269.3	CENTENNIAL TOWER 118.9	GND CON 121.8	CLNC DEL 128.6
----------------------	---------------------------------------	----------------------------------	-------------------------	--------------------------



SW-1, 22 FEB 2024 to 21 MAR 2024

SW-1, 22 FEB 2024 to 21 MAR 2024

ELEV 5885	TDZE 5813
------------------	------------------



MIRL all Rwys
 REIL Rwys 17R, 28, and 35L

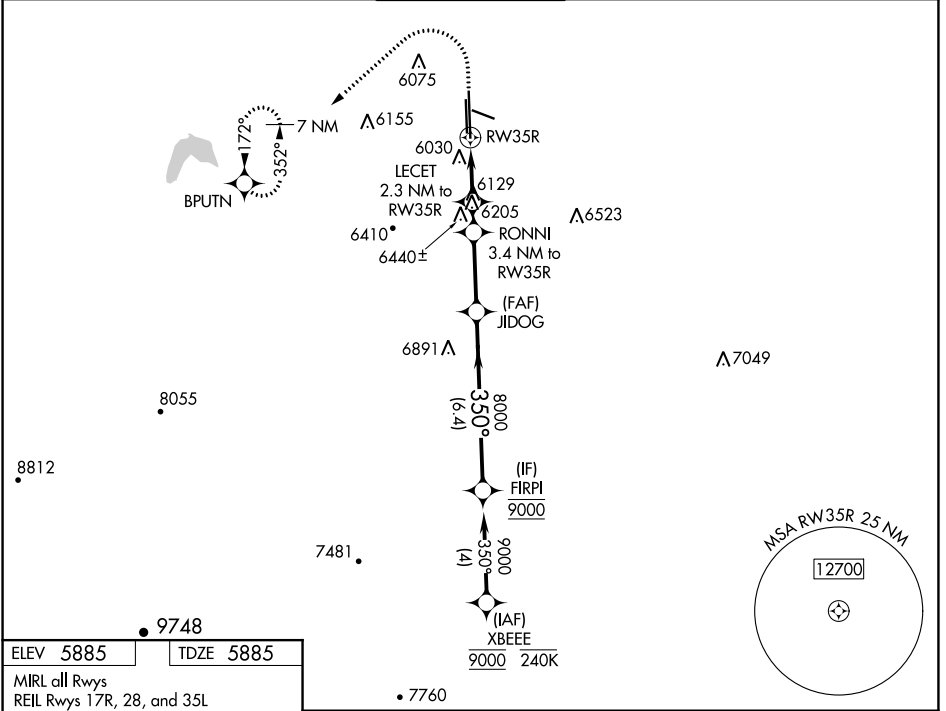
	6400	9000	EZBEL	
	↑	↷	✦	
*LNAV only.				
			NIDLY	MESME
			7500	7600
			6940*	7500
				8100
				GP 3.00°
				TCH 41
	1.3	2.2 NM	1.7 NM	3 NM
				3.2 NM
CATEGORY	A	B	C	D
LPV DA	6079-7/8 266 (200-7/8)			
LNAV/VNAV DA	6119-1 306 (300-1)			
LNAV MDA	6260-1	447 (400-1)	6260-1 3/8	447 (400-1 3/8)
CIRCLING	6400-1 515 (600-1)	6540-1 655 (700-1)	6740-2 1/2 855 (900-2 1/2)	6900-3 1015 (1100-3)

WAAS CH 40339 W35A	APP CRS 350°	Rwy Idg TDZE Apt Elev	10001 5885 5885
--	------------------------	-----------------------------	--

RNAV (GPS) RWY 35R

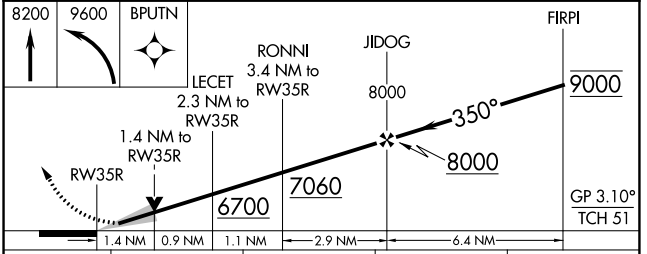
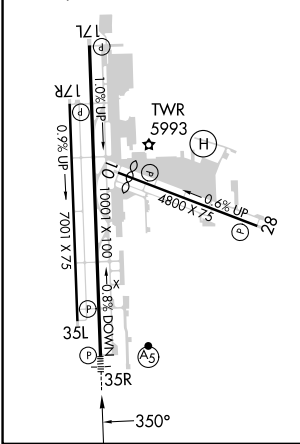
CENTENNIAL (APA)

RNP APCH.		MALSRL	MISSED APPROACH: (Do not exceed 240K until BPUTN) Climb to 8200 then climbing left turn to 9600 direct BPUTN and hold.	
<p>▼ Circling Rwy 35L NA at night. For uncompensated Baro-VNAV systems, LNAV/VNAV NA below -21°C or above 54°C. For inop ALS, increase LNAV Cats C/D visibility to 1 3/8 SM.</p> <p>▲</p>				
ATIS 120.3	DENVER APP CON 132.75 269.3	CENTENNIAL TOWER 118.9	GND CON 121.8	CLNC DEL 128.6



ELEV 5885	TDZE 5885
-----------	-----------

MIRL all Rwys
REIL Rws 17R, 28, and 35L



CATEGORY	A	B	C	D
LPV DA		6085-1/2	200 (200-1/2)	
LNAV/VNAV DA		6324-3/4	439 (500-3/4)	
LNAV MDA	6380-1/2	495 (500-1/2)	6380-1	495 (500-1)
CIRCLING	6400-1 515 (600-1)	6540-1 655 (700-1)	6740-2 1/2 855 (900-2 1/2)	6760-2 3/4 875 (900-2 3/4)

SW-1, 22 FEB 2024 to 21 MAR 2024

SW-1, 22 FEB 2024 to 21 MAR 2024