

WAAS CH 69418 W25A	APP CRS 247°	Rwy Idg 3434 TDZE 8 Apt Elev 9
--	------------------------	---

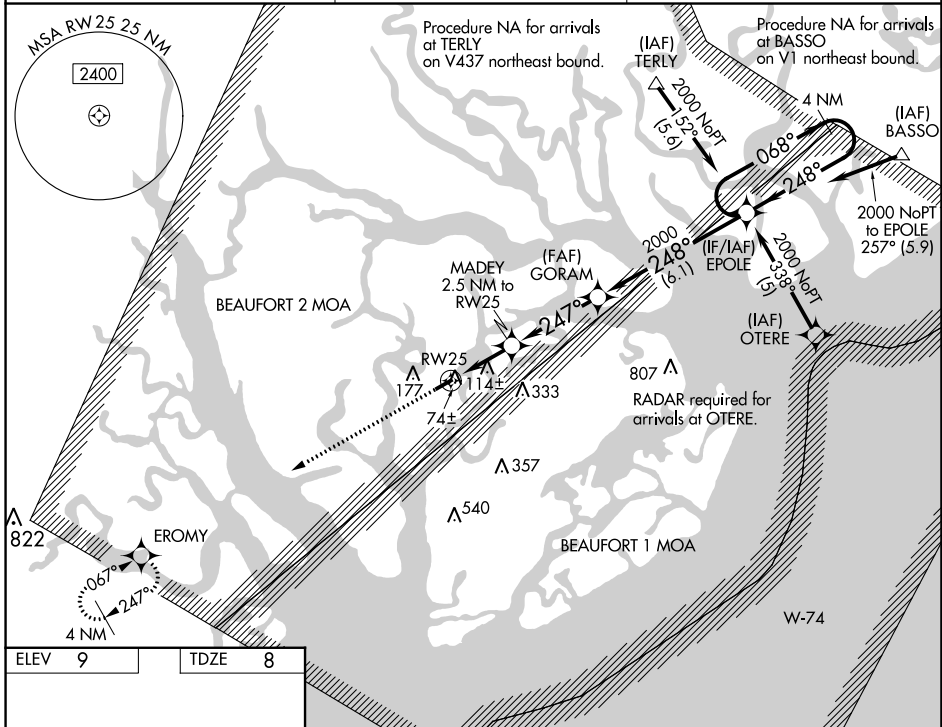
RNAV (GPS) RWY 25

BEAUFORT EXEC (A.R.W)

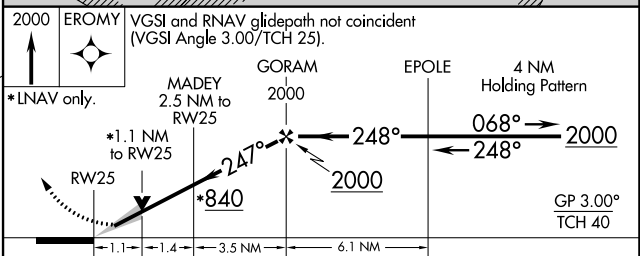
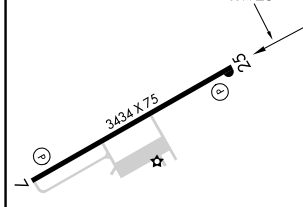
ASR For uncompensated Baro-VNAV systems, LNAV/VNAV NA below -15°C (5°F) or above 54°C (130°F). DME/DME RNP-0.3 NA. When local altimeter setting not received, use Beaufort MCAS (Merritt Fld) altimeter setting and increase LPV DA to 226, LNAV/VNAV DA to 352, and all MDA 20 feet. VDP and Baro-VNAV NA when using Beaufort MCAS (Merritt Fld) altimeter setting.

MISSED APPROACH: Climb to 2000 direct EROMY and hold.

AWOS-3 119.675	BEAUFORT APP CON* 125.125 292.125	UNICOM 122.7 (CTAF)
--------------------------	---	-------------------------------



ELEV 9	TDZE 8
---------------	---------------



CATEGORY	A	B	C	D
LPV DA		208-1	200 (200-1)	NA
LNAV/VNAV DA		334-1¼	326 (400-1¼)	NA
LNAV MDA		380-1	372 (400-1)	NA
CIRCLING	480-1	471 (500-1)	640-1¾ 631 (700-1¾)	NA

SE-2, 22 FEB 2024 to 21 MAR 2024

SE-2, 22 FEB 2024 to 21 MAR 2024

APP CRS	Rwy Idg	3434
067°	TDZE	9
	Apt Elev	9

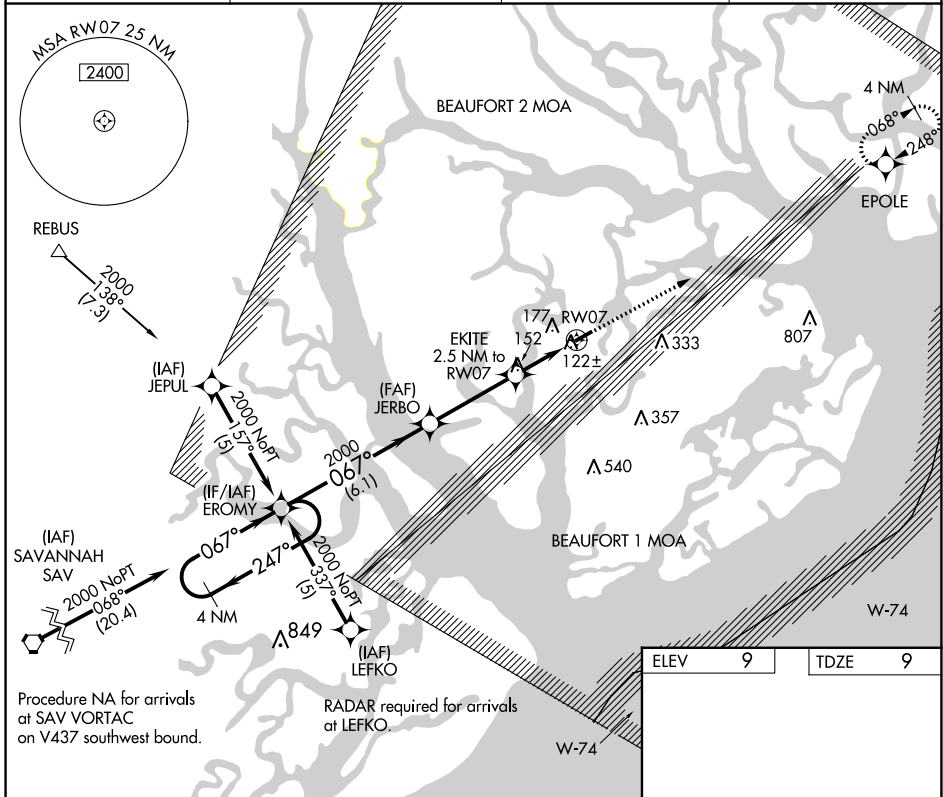
RNAV (GPS) RWY 7

BEAUFORT EXEC (ARW)

⚠ DME/DME RNP-0.3 NA. Helicopter visibility reduction below 3/4 SM NA. When local altimeter setting not received, use Beaufort MCAS (Merritt Flt) altimeter setting and increase all MDA 20 feet.

MISSED APPROACH: Climb to 2000 direct EPOLE and hold.

AWOS-3 119.675	BEAUFORT APP CON* 125.125 292.125	CLNC DEL 121.725	UNICOM 122.7 (CTAF) 0
--------------------------	---	----------------------------	---------------------------------



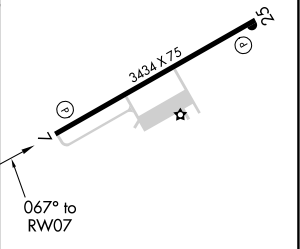
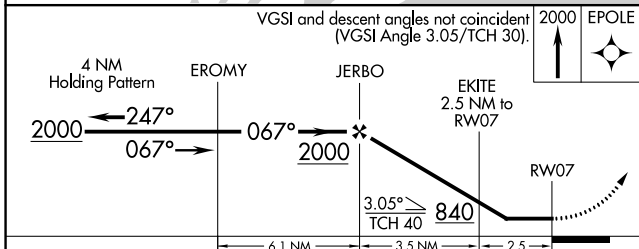
SE-2, 22 FEB 2024 to 21 MAR 2024

SE-2, 22 FEB 2024 to 21 MAR 2024

Procedure NA for arrivals at SAV VORTAC on V437 southwest bound.

RADAR required for arrivals at LEFKO.

ELEV	9	TDZE	9
------	---	------	---



CATEGORY	A	B	C	D
LNVA MDA	380-1	371 (400-1)		NA
CIRCLING	480-1	471 (500-1)	640-1 3/4 631 (700-1 3/4)	NA

REIL Rwy 25
MIRL Rwy 7-25 0