

SCRANTON EIGHT DEPARTURE

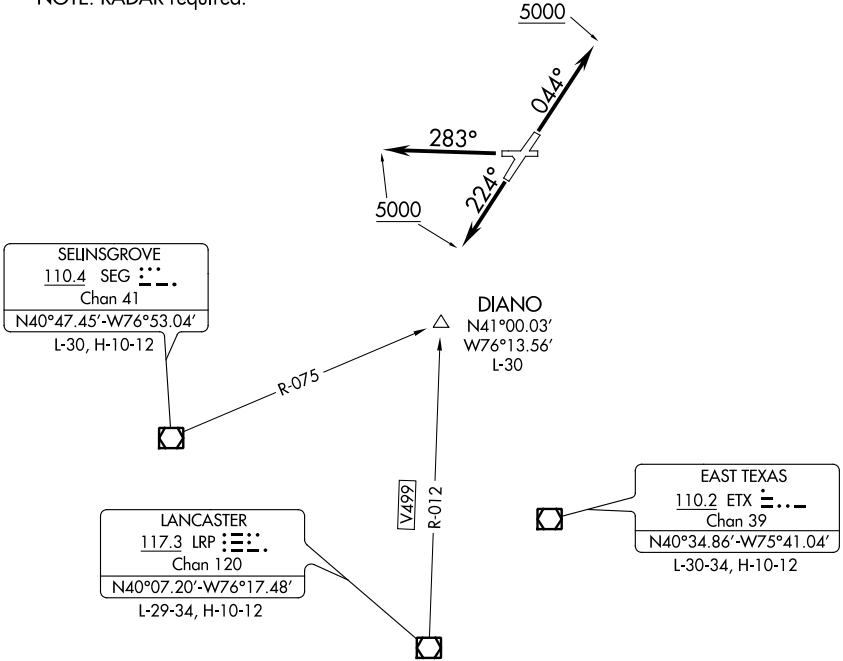
WILKES-BARRE/SCRANTON INTL (AVP)
WILKES-BARRE/SCRANTON, PENNSYLVANIA

ATIS 111.6
GND CON
121.9
WILKES-BARRE TOWER
120.1 257.8
WILKES-BARRE DEP CON
120.95 256.7 (NORTH)
126.3 256.7 (SOUTH)

**TOP ALTITUDE:
5000**

BINGHAMTON
112.2 CFB
Chan 59
N42°09.45'-W76°08.19'
L-30-32, H-10-12

NOTE: RADAR required.



SELINGSGROVE
110.4 SEG
Chan 41
N40°47.45'-W76°53.04'
L-30, H-10-12

DIANO
N41°00.03'
W76°13.56'
L-30

LANCASTER
117.3 IRP
Chan 120
N40°07.20'-W76°17.48'
L-29-34, H-10-12

EAST TEXAS
110.2 ETX
Chan 39
N40°34.86'-W75°41.04'
L-30-34, H-10-12

TAKEOFF MINIMUMS:

- Rwy 10: NA - Obstacles.
- Rwy 4: Standard with minimum climb of 400' per NM to 2700.
- Rwy 22: Standard with minimum climb of 290' per NM to 3100.
- Rwy 28: Standard with minimum climb of 270' per NM to 2100.

NOTE: Chart not to scale.



DEPARTURE ROUTE DESCRIPTION

- TAKEOFF RUNWAY 4:** Climb heading 044° to 5000, thence....
- TAKEOFF RUNWAY 22:** Climb heading 224° to 5000, thence....
- TAKEOFF RUNWAY 28:** Climb heading 283° to 5000, thence....

...expect radar vectors to assigned route/navaid/fix, expect filed altitude 10 minutes after departure.

NE-4, 07 OCT 2021 to 04 NOV 2021

NE-4, 07 OCT 2021 to 04 NOV 2021