

WAAS CH 86440 W11A	APP CRS 109°	Rwy Idg TDZE Apt Elev	6300 4854 4874
--	------------------------	-----------------------------	---

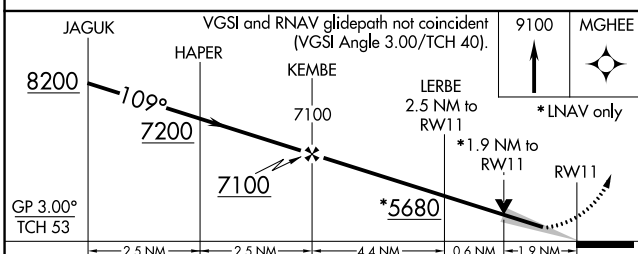
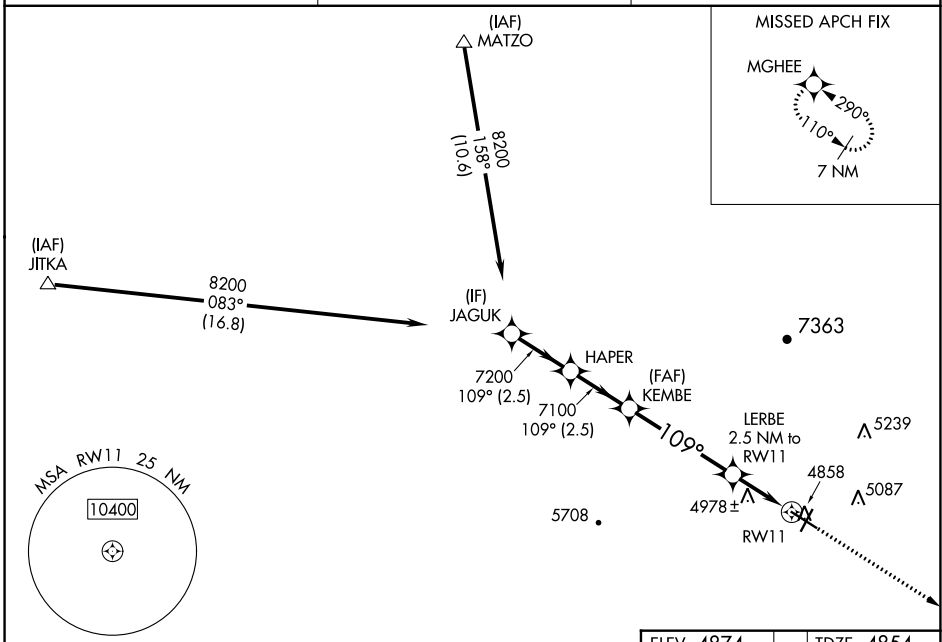
RNAV (GPS) RWY 11

COLORADO CITY MUNI (AZC)

⚠ For uncompensated Baro-VNAV systems, LNAV/VNAV NA below -24°C (-11°F) or above 51°C (125°F). Circling NA for Cat D north of Rwy 11-29. DME/DME RNP-0.3 NA.

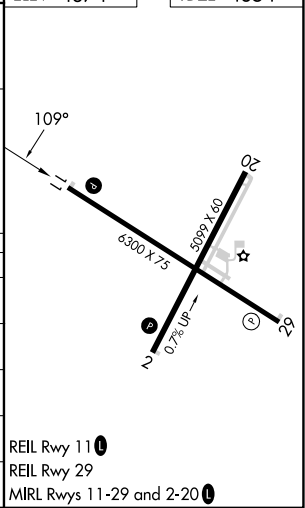
MISSED APPROACH: Climb to 9100 direct MGHEE and hold, continue climb-in-hold to 9100.
#Missed approach requires minimum climb of 240 feet per NM to 7500.

AWOS-3PT 118.375	LOS ANGELES CENTER 124.2 343.6	UNICOM 122.7 (CTAF) ①
----------------------------	--	---------------------------------



ELEV 4874	TDZE 4854
-----------	-----------

CATEGORY	A	B	C	D
LPV DA#	5104-1 250 (300-1)			
LPV DA	5297-1½ 443 (500-1½)			
LNAV/VNAV DA	5463-2½ 609 (600-2½)			
LNAV MDA	5500-1 646 (700-1)	5500-1⅞ 646 (700-1⅞)		
C CIRCLING	5500-1 626 (700-1)	5520-1 646 (700-1)	6880-3 2006 (2100-3)	



SW-4, 22 FEB 2024 to 21 MAR 2024

SW-4, 22 FEB 2024 to 21 MAR 2024

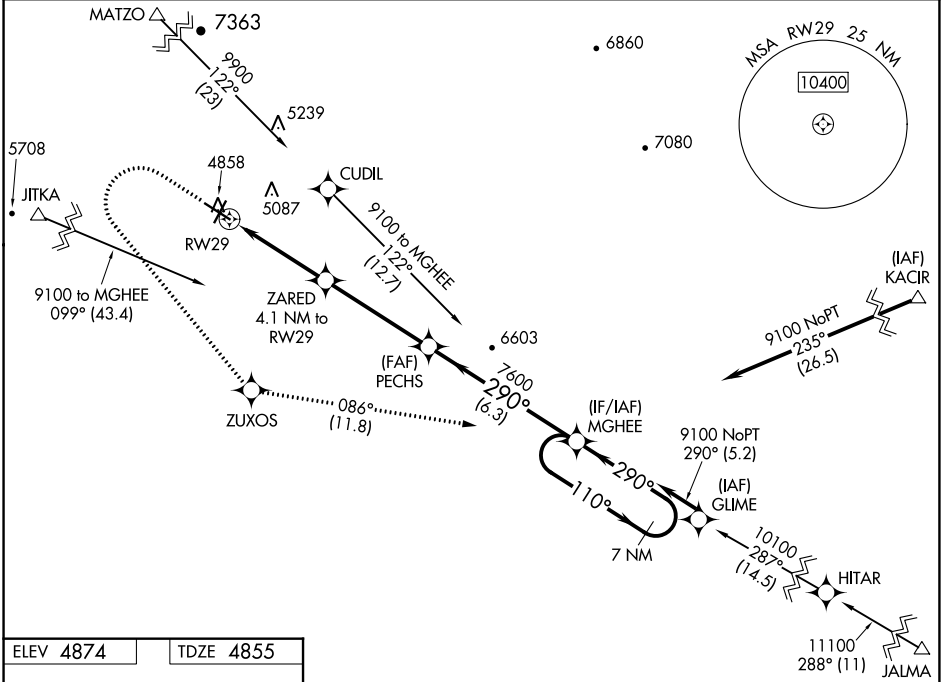
WAAS CH 72740 W29A	APP CRS 290°	Rwy Idg TDZE Apt Elev	6300 4855 4874
--	------------------------	-----------------------------	---

RNAV (GPS) RWY 29

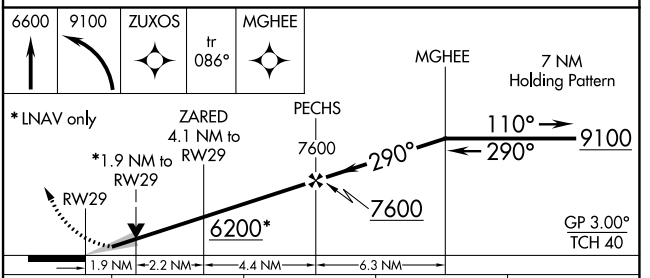
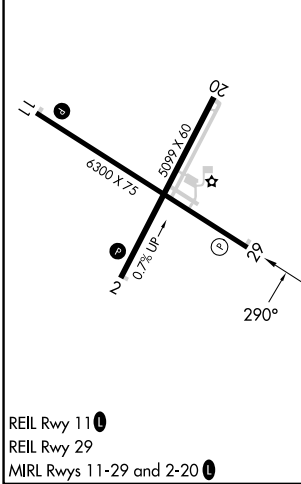
COLORADO CITY MUNI (AZC)

RNP APCH.	MISSED APPROACH: Climb to 6600 then climbing left turn to 9100 direct ZUXOS and track 086° to MGHEE and hold.
Baro-VNAV NA. Circling NA for Cat D north of Rwy 11-29.	

AWOS-3PT 118.375	LOS ANGELES CENTER 124.2 343.6	UNICOM 122.7 (CTAF)
----------------------------	--	-------------------------------



ELEV 4874	TDZE 4855
-----------	-----------



CATEGORY	A	B	C	D
LPV DA		5105-1	250 (300-1)	
LNAV/VNAV DA		5157-1	302 (300-1)	
LNAV MDA	5500-1	645 (700-1)	5500-1 $\frac{7}{8}$	645 (700-1 $\frac{7}{8}$)
CIRCLING	5500-1 626 (700-1)	5520-1 646 (700-1)	6880-3	2006 (2100-3)

SW-4, 22 FEB 2024 to 21 MAR 2024

SW-4, 22 FEB 2024 to 21 MAR 2024