

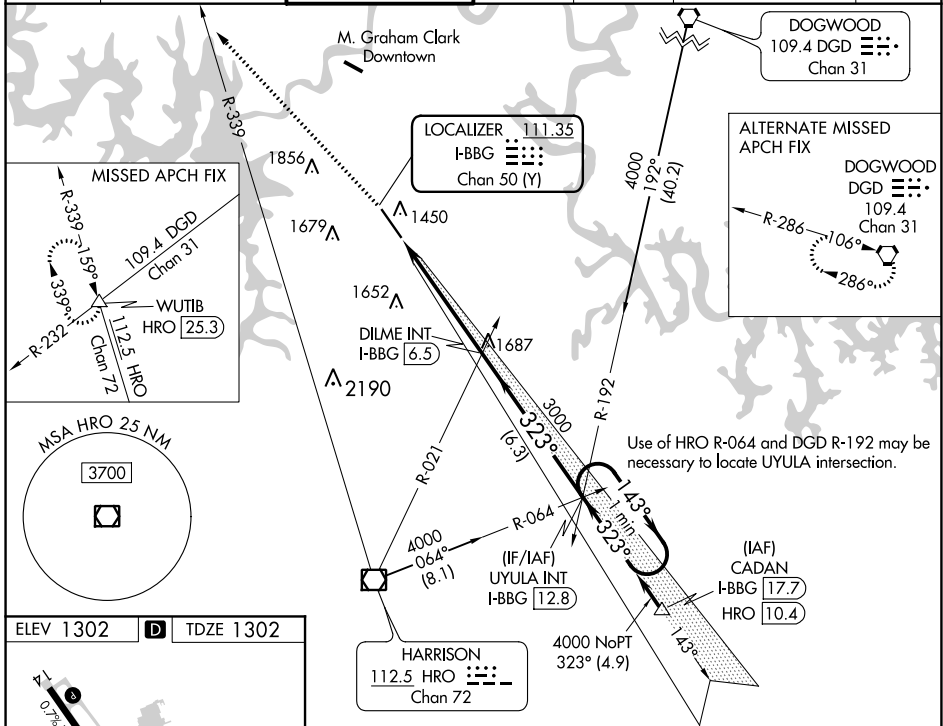
LOC/DME I-BBG 111.35 Chan 50 (Y)	APP CRS 323°	Rwy Idg 7140 TDZE 1302 Apt Elev 1302
---	------------------------	---

ILS or LOC RWY 32

BRANSON (BBG)

<p>NA</p> <p>Inoperative table does not apply. When local altimeter setting not received, use Harrison altimeter setting and increase all DA/MDA 60 feet and increase Circling Cat D visibility ¼ mile. VDP NA when using Harrison altimeter setting.</p>	<p>MALSF</p>	<p>MISSED APPROACH: Climb to 4000 on heading 315° and HRO VOR/DME R-339 to WUTIB INT/HRO 25.3 DME and hold.</p>				
			<p>ATIS 124.625</p>	<p>SPRINGFIELD APP CON 126.35</p>	<p>BRANSON TOWER* 128.15 (CTAF) 0</p>	<p>GND CON 118.4</p>

ATIS 124.625	SPRINGFIELD APP CON 126.35	BRANSON TOWER* 128.15 (CTAF) 0	GND CON 118.4	CLNC DEL 118.4	SPRINGFIELD CLNC DEL 126.35 (When tower closed)	UNICOM 122.95
---------------------	-----------------------------------	--	----------------------	-----------------------	---	----------------------



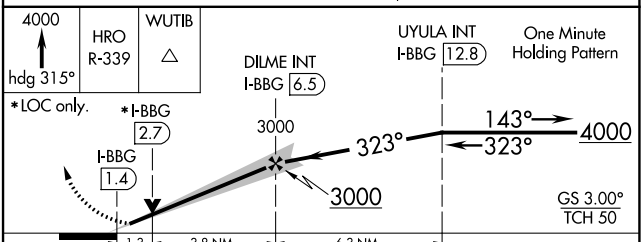
ELEV 1302	D	TDZE 1302
-----------	----------	-----------

TWR ☆

REIL Rwy 14 **0** 323° 5.1 NM
HIRL Rwy 14-32 **0** from FAF

FAF to MAP 5.1 NM

Knots	60	90	120	150	180
Min:Sec	5:06	3:24	2:33	2:02	1:42



CATEGORY	A	B	C	D
S-ILS 32	1502-1 200 (200-1)			
S-LOC 32	1760-1	458 (500-1)	1760-1¼ 458 (500-1¼)	1760-1½ 458 (500-1½)
C CIRCLING	1760-1 458 (500-1)	1780-1 478 (500-1)	2220-2½ 918 (1000-2½)	2220-2¾ 918 (1000-2¾)

NC-3, 11 AUG 2022 to 08 SEP 2022

NC-3, 11 AUG 2022 to 08 SEP 2022

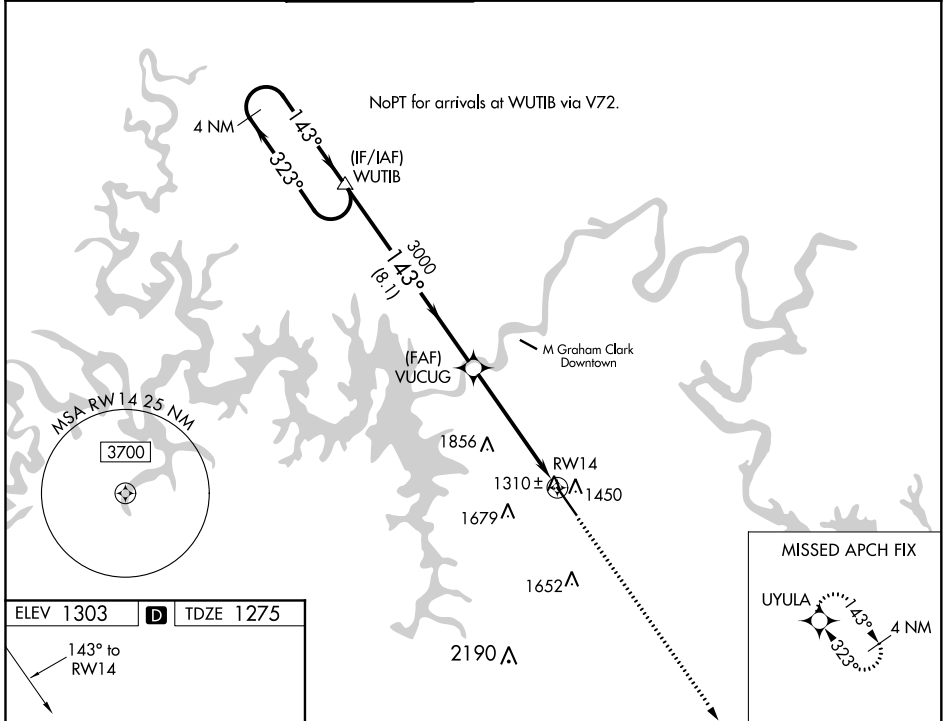
WAAS CH 49111 W14A	APP CRS 143°	Rwy Idg TDZE Apt Elev	7140 1275 1303
--	------------------------	-----------------------------	---

RNAV (GPS) RWY 14

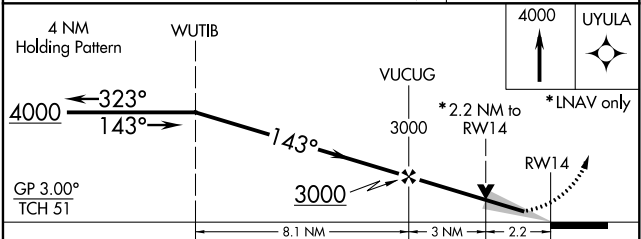
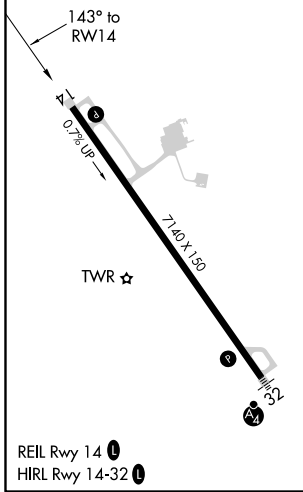
BRANSON (BBG)

RNP APCH.		MISSED APPROACH: Climb to 4000 direct UYULA and hold.	
<p>▼ For uncompensated Baro-VNAV systems, LNAV/VNAV NA below -17°C or above 46°C. When local altimeter setting not received, use Harrison altimeter setting and increase all DA 47 feet and all MDA 60 feet. VDP and Baro-VNAV NA when using Harrison altimeter setting.</p>			

ATIS 124.625	SPRINGFIELD APP CON 126.35	BRANSON TOWER* 128.15 (CTAF) 0	GND CON 118.4	CLNC DEL 118.4	SPRINGFIELD CLNC DEL 126.35 (When tower closed)	UNICOM 122.95
------------------------	--------------------------------------	---	-------------------------	--------------------------	--	-------------------------



ELEV 1303	D	TDZE 1275
-----------	----------	-----------



CATEGORY	A	B	C	D
LPV DA	1525-1 250 (300-1)			
LNAV/VNAV DA	1798-2 523 (500-2)			
LNAV MDA	2020-1 745 (800-1)	2020-1¼ 745 (800-1¼)	2020-2¼ 745 (800-2¼)	2020-2½ 745 (800-2½)

NC-3, 11 AUG 2022 to 08 SEP 2022

NC-3, 11 AUG 2022 to 08 SEP 2022

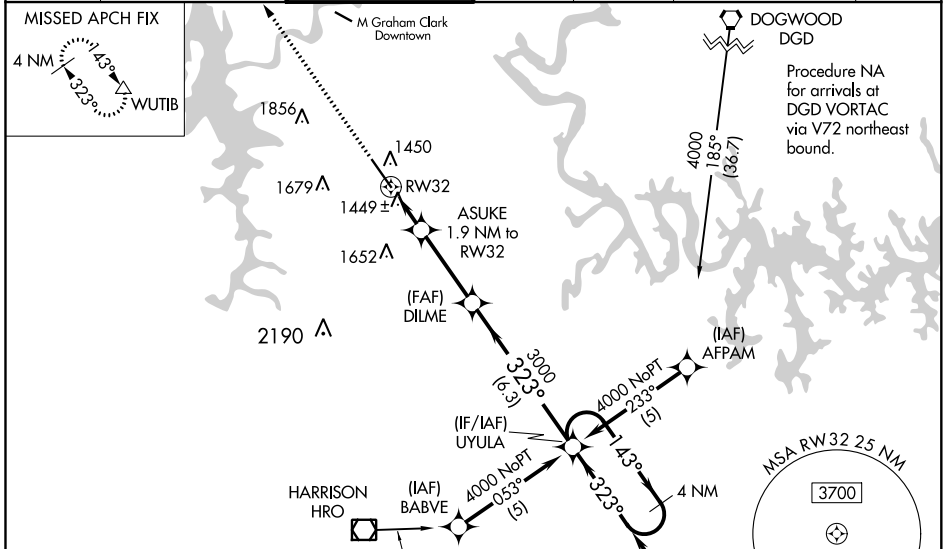
WAAS CH 93911 W32A	APP CRS 323°	Rwy Idg 7140 TDZE 1302 Apt Elev 1302
--	------------------------	---

RNAV (GPS) RWY 32

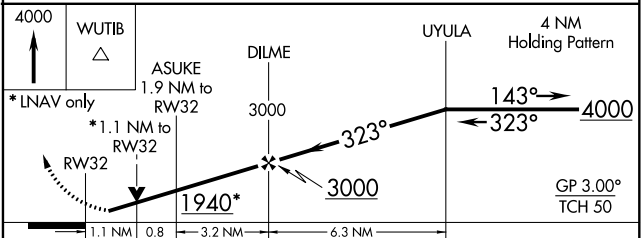
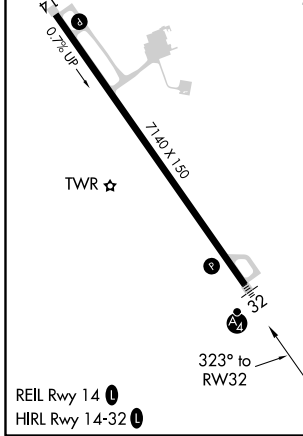
BRANSON (BBG)

RNP APCH.	MALSF 	MISSED APPROACH: Climb to 4000 direct WUTIB and hold.
⚠ When local altimeter setting not received, use Harrison altimeter setting: increase LPV DA to 1549 feet; increase LNAV/VNAV DA to 1804 feet and all visibilities ½ SM; increase all MDAs 60 feet and visibility Cats C and D ½ SM. VDP and Baro-VNAV NA when using Harrison altimeter setting. For uncompensated Baro-VNAV systems, LNAV/VNAV NA below -17°C (2°F) or above 46°C (114°F). Inop table does not apply.		

ATIS 124.625	SPRINGFIELD APP CON 126.35	BRANSON TOWER * 128.15 (CTAF) 0	GND CON 118.4	CLNC DEL 118.4	SPRINGFIELD CLNC DEL 126.35 (When tower closed)	UNICOM 122.95
------------------------	--------------------------------------	---	-------------------------	--------------------------	--	-------------------------



ELEV 1302	D	TDZE 1302
-----------	----------	-----------



CATEGORY	A	B	C	D
LPV DA	1502-1		200 (200-1)	
LNAV/VNAV DA	1757-1½		455 (500-1½)	
LNAV MDA	1700-1		398 (400-1)	
CIRCLING	1760-1	1900-1	2220-2¾	2220-3
	458 (500-1)	598 (600-1)	918 (1000-2¾)	918 (1000-3)

NC-3, 11 AUG 2022 to 08 SEP 2022

NC-3, 11 AUG 2022 to 08 SEP 2022