

WAAS CH 82101 W05A	APP CRS 049°	Rwy Idg 5580 TDZE 12 Apt Elev 13
--	------------------------	---

RNAV (GPS) RWY 5

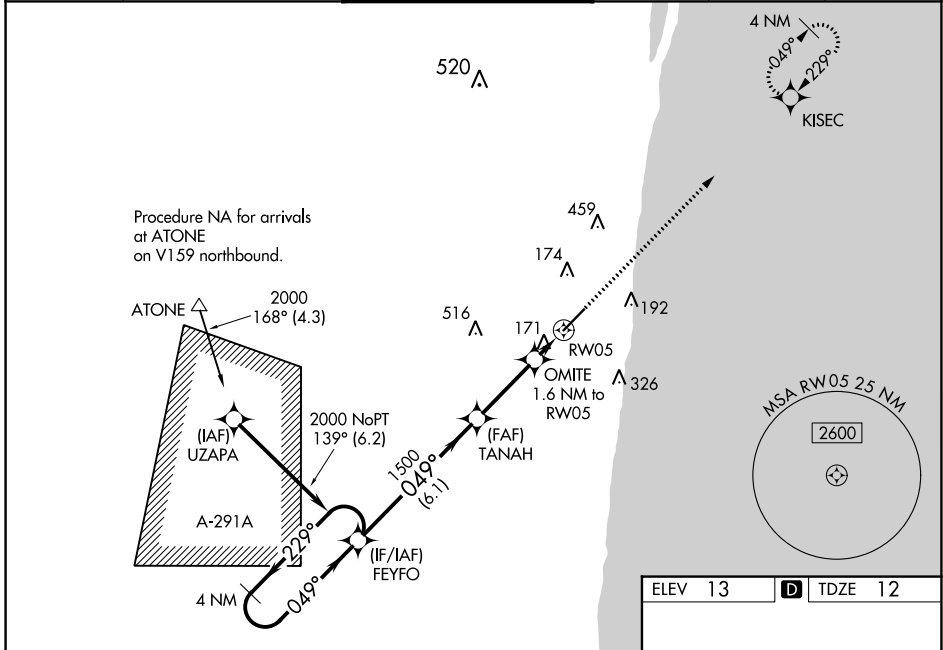
BOCA RATON (BCT)

RNP APCH-GPS.

▼ Baro-VNAV NA when using Palm Beach Intl altimeter setting. For uncompensated Baro-VNAV systems, LNAV/VNAV NA below -15°C or above 54°C. When local altimeter setting not received, use Palm Beach Intl altimeter setting: increase LPV DA to 326 feet; increase LNAV/VNAV DA to 501 feet; increase all MDAs 60 feet and visibility LNAV Cats C and D 1/4 SM and Circling Cats C and D 1/4 SM. In minimum visibility conditions bright lights on highway 1/4 mile north of airport may be mistaken for runway lights. Rwy 3 helicopter visibility reduction below 3/4 SM NA.

MISSED APPROACH: Climb to 2000 direct KISEC and hold.

AWOS-3 121.125	PALM BEACH APP CON 127.35 343.6	BOCA RATON TOWER ★ 118.425 (CTAF) 0	GND CON 121.8	CLNC DEL 121.8	GCO 127.35
--------------------------	---	---	-------------------------	--------------------------	----------------------

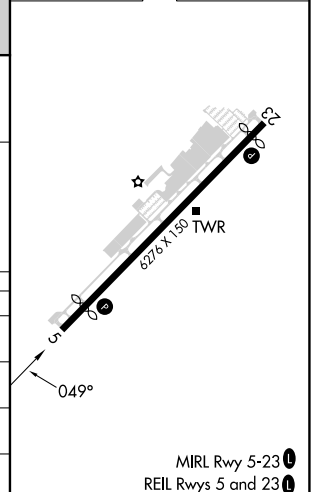


SE-3, 22 FEB 2024 to 21 MAR 2024

SE-3, 22 FEB 2024 to 21 MAR 2024

ELEV 13	D TDZE 12
---------	------------------

4 NM Holding Pattern		VGSI and RNAV glidepath not coincident (VGSI Angle 3.25/TCH 46).		2000	KISEC
← 229° / 049° →		FEYFO		↑	✦
GP 3.00°		TANAH	OMITE	RWY 5	
TCH 40		1500	1.6 NM to RWY 5	560	
		6.1 NM	3 NM	1.6 NM	
CATEGORY	A	B	C	D	
LPV DA		283-7/8	271 (300-7/8)		
LNAV/VNAV DA		458-13/8	446 (500-13/8)		
LNAV MDA	440-1	428 (500-1)	440-1 1/4	428 (500-1 1/4)	
C CIRCLING	680-1	667 (700-1)	680-1 1/4	880-2 3/4	
			667 (700-1 1/4)	867 (900-2 3/4)	



APP CRS	Rwy Idg	5898
229°	TDZE	13
	Apt Elev	13

RNAV (RNP) Z RWY 23

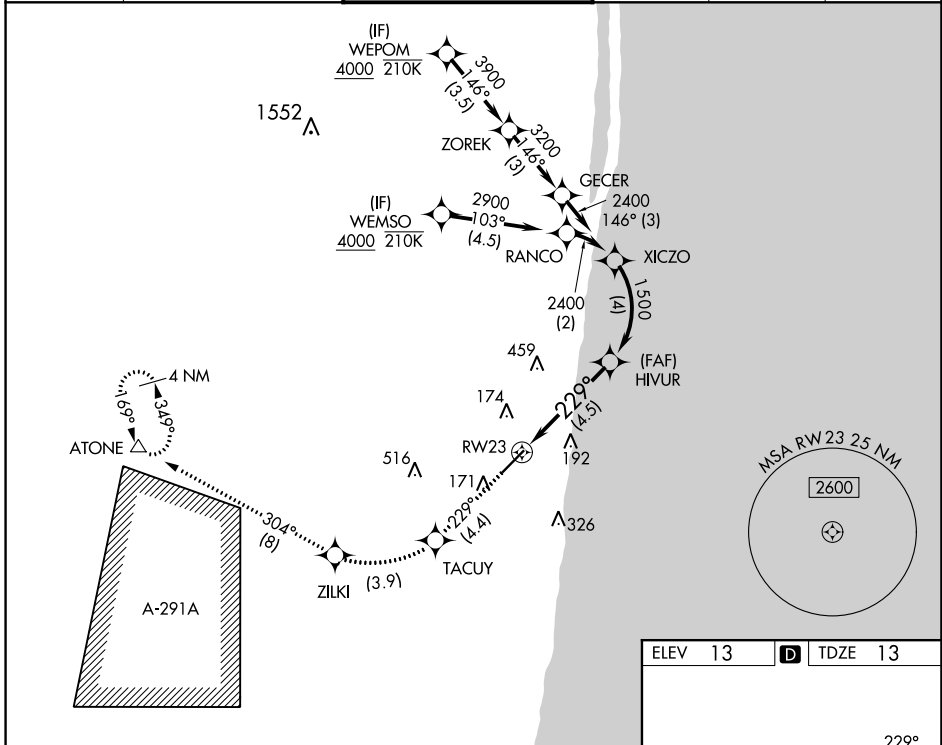
BOCA RATON (BCT)

RNP AR APCH. RF Required.

▼ For uncompensated Baro-VNAV systems, procedure NA below -15°C or above 54°C. In minimum visibility conditions, bright lights on highway ¼ mile north of airport may be mistaken for runway lights.

MISSED APPROACH: Climb to 2100 on track 229° to TACUY, right turn to ZILKI and track 304° to ATONE and hold.

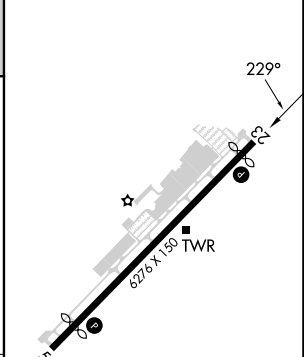
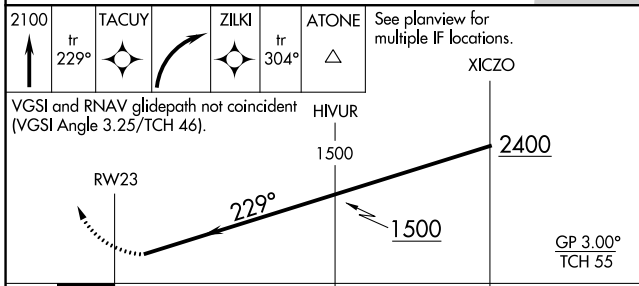
AWOS-3 121.125	PALM BEACH APP CON 127.35 343.6	BOCA RATON TOWER ★ 118.425 (CTAF) 0	GND CON 121.8	CLNC DEL 121.8	GCO 127.35
--------------------------	---	---	-------------------------	--------------------------	----------------------



SE-3, 22 FEB 2024 to 21 MAR 2024

SE-3, 22 FEB 2024 to 21 MAR 2024

ELEV 13	D TDZE 13
---------	------------------



2100	TACUY	ZILKI	ATONE	See planview for multiple IF locations.
↑	↖	↖	△	
tr 229°		tr 304°		
VGSI and RNAV glidepath not coincident (VGSI Angle 3.25/TCH 46).				
RW23	HIVUR	XICZO		
	1500	2400		
	229°	1500		GP 3.00° TCH 55
	4.5 NM	4 NM		
CATEGORY	A	B	C	D
RNP 0.30 DA	519-1⅓		506 (600-1⅓)	

AUTHORIZATION REQUIRED

MIRL Rwy 5-23 0
REIL Rws 5 and 23 0

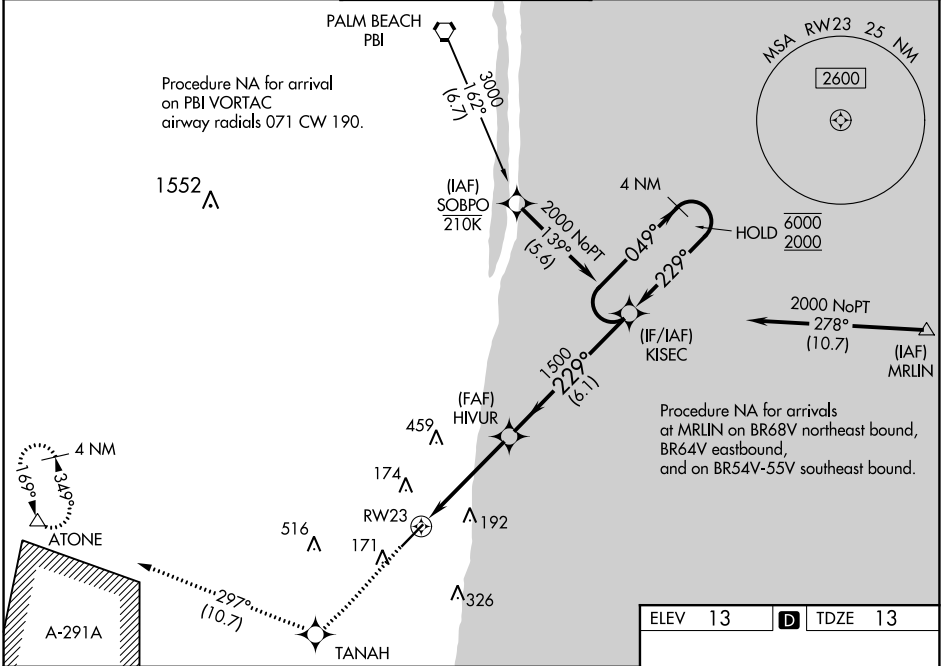
WAAS CH 42801 W23A	APP CRS 229°	Rwy Idg TDZE Apt Elev	5898 13 13
--	------------------------	-----------------------------	---------------------------------------

RNAV (GPS) Y RWY 23

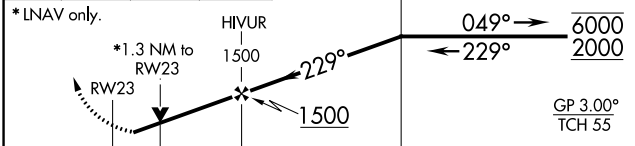
BOCA RATON (BCT)

RNP APCH.	MISSED APPROACH: Climb to 2100 direct TANAHA and on track 297° to ATONE and hold.
<p>▼ Rwy 23 helicopter visibility reduction below 3/4 SM NA. For uncompensated Baro-VNAV systems, procedure NA below -15°C or above 54°C. In minimum visibility conditions, bright lights on highway 1/4 mile north of airport may be mistaken as runway lights.</p>	

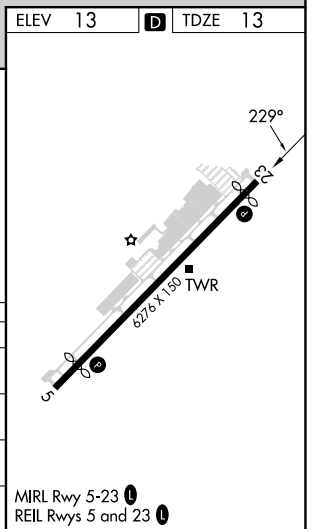
AWOS-3 121.125	PALM BEACH APP CON 127.35 343.6	BOCA RATON TOWER ★ 118.425 (CTAF) 0	GND CON 121.8	CLNC DEL 121.8	GCO 127.35
--------------------------	---	---	-------------------------	--------------------------	----------------------



2100	TANAHA	tr 297°	ATONE Δ	VGSI and RNAV glidepath not coincident (VGSI Angle 3.25/TCH 46).	4 NM Holding Pattern
------	--------	---------	----------------	--	----------------------



CATEGORY	A	B	C	D
LPV DA	263-7/8 250 (300-7/8)			
LNAV/DA	357-1 1/8 344 (400-1 1/8)			
LNAV MDA	480-1 467 (500-1)	480-1 3/8 467 (500-1 3/8)		
C CIRCLING	680-1 667 (700-1)	680-1 3/4 667 (700-1 3/4)	880-2 3/4 867 (900-2 3/4)	



SE-3, 22 FEB 2024 to 21 MAR 2024

SE-3, 22 FEB 2024 to 21 MAR 2024