

APP CRS 331°	Rwy Idg TDZE Apt Elev	5201 3459 3459
------------------------	-----------------------------	-------------------------------------------

RNAV (GPS) RWY 34

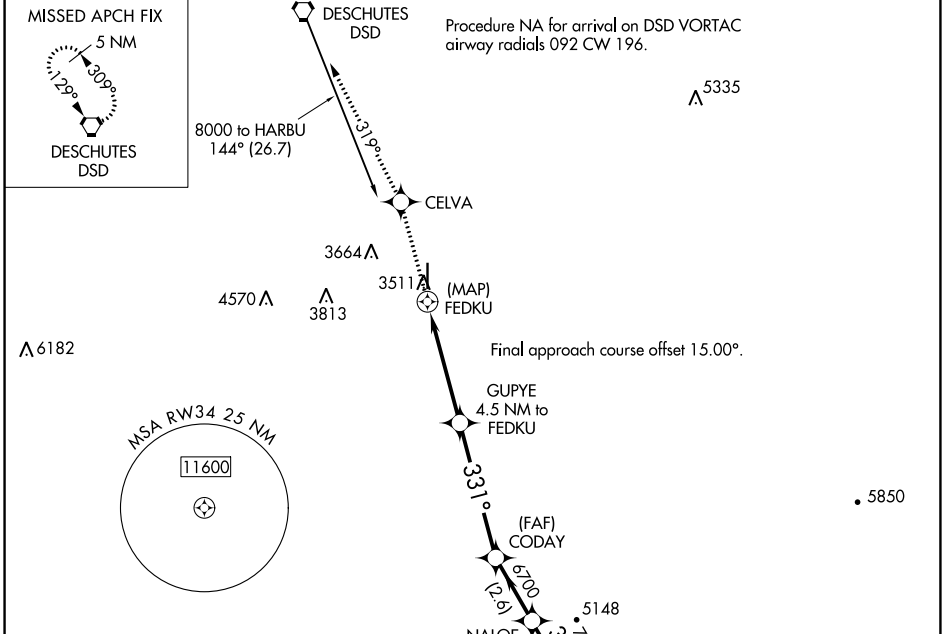
BEND MUNI (BDN)

RNP APCH - GPS.

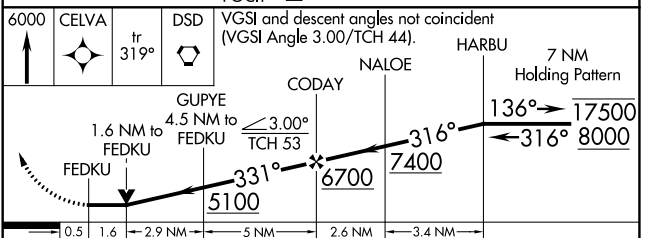
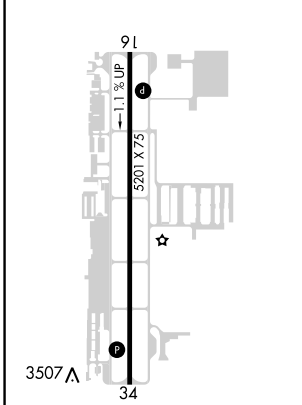
▼ Rwy 34 helicopter visibility reduction below 3/4 SM NA. When local altimeter setting not received, use Redmond altimeter setting and increase all MDAs 100 feet and LNAV visibility Cats B, C, and D 1/2 SM and Circling visibility Cats A, B, and C 1/2 SM.

MISSED APPROACH: Climb to 6000 direct CELVA and on track 319° to DSD VORTAC and hold.

AWOS-3 134.425	SEATTLE CENTER 126.15 269.475	UNICOM 123.0 (CTAF) 0
--------------------------	-----------------------------------------	---------------------------------



ELEV 3459	TDZE 3459
-----------	-----------



CATEGORY	A	B	C	D
LNAV MDA	4180-1 721 (800-1)		4180-2 721 (800-2)	
CIRCLING	4180-1 721 (800-1)		4180-2 721 (800-2)	4640-3 1181 (1200-3)

REIL Rws 16 and 34

MIRL Rwy 16-34

NW-1, 22 FEB 2024 to 21 MAR 2024

NW-1, 22 FEB 2024 to 21 MAR 2024

WAAS CH 90137 W16B	APP CRS 153°	Rwy Idg TDZE Apt Elev	5201 3432 3459
----------------------------------------	------------------------	-----------------------------	-------------------------------------------

RNAV (GPS) Y RWY 16

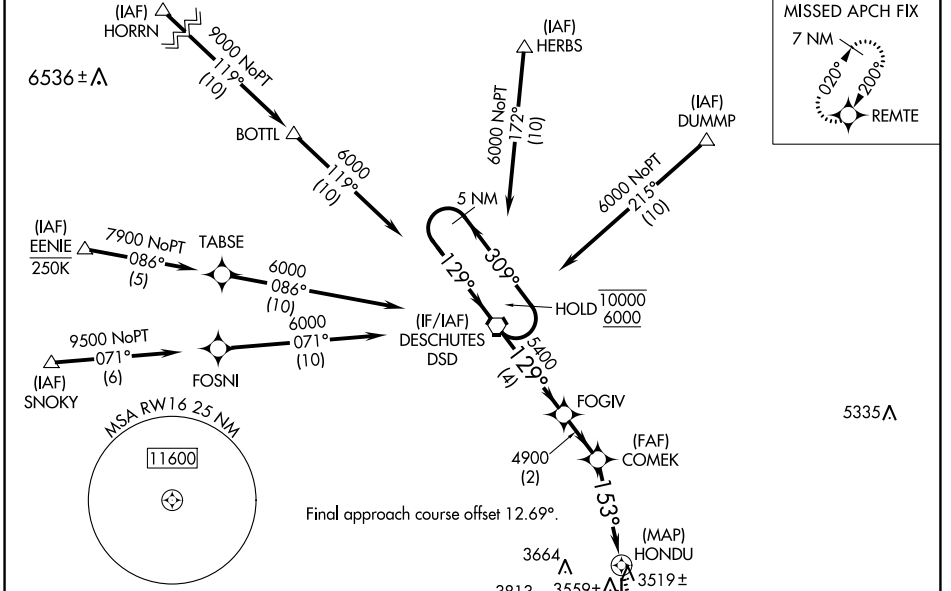
BEND MUNI (BDN)

RNP APCH - GPS.

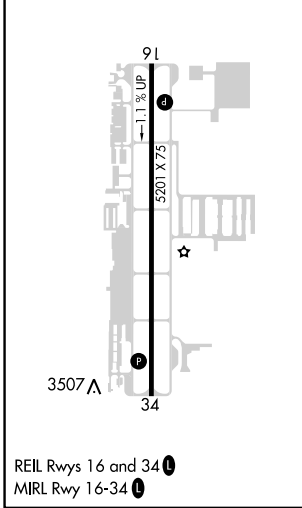
⚠ Rwy 16 helicopter visibility reduction below 3/4 SM NA. VDP NA when using Redmond altimeter setting. When local altimeter setting not received, use Redmond altimeter setting and increase all MDAs 100 feet and LP visibility Cats C and D 3/4 SM, LNAV visibility Cats C and D 1/2 SM, and Circling visibility Cat C 1/2 SM.

MISSED APPROACH: Climb to 7400 direct HITUP and on track 064° to REMTE and hold, continue climb-in-hold to 7400.

AWOS-3 134.425	SEATTLE CENTER 126.15 269.475	UNICOM 123.0 (CTAF)
--------------------------	-----------------------------------------	-------------------------------



ELEV 3459	TDZE 3432
-----------	-----------



5 NM Holding Pattern	DSD VORTAC	FOGIV	7400	HITUP	tr 064°	REMTE
10000 6000	309° 129°	129°	5400	4900	3.12° TCH 50	0.6 NM to HONDU
VGSI and descent angles not coincident (VGSI Angle 3.00/TCH 38).						
4 NM 2 NM 3.3 NM 0.6 0.5						
CATEGORY	A	B	C	D		
LP MDA	3780-1 348 (400-1)					
LNAV MDA	3820-1 388 (400-1)		3820-1 3/8 388 (400-1 3/8)			
C CIRCLING	3960-1 501 (600-1)	3980-1 521 (600-1)	4120-1 3/4 661 (700-1 3/4)	4640-3 1181 (1200-3)		

NW-1, 22 FEB 2024 to 21 MAR 2024

NW-1, 22 FEB 2024 to 21 MAR 2024

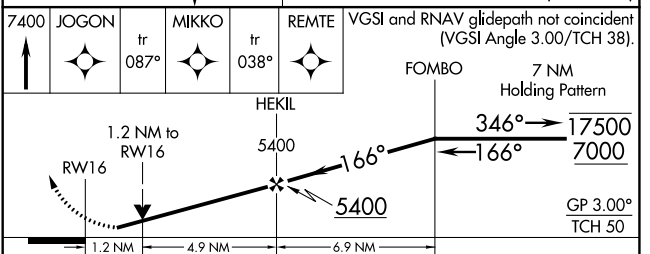
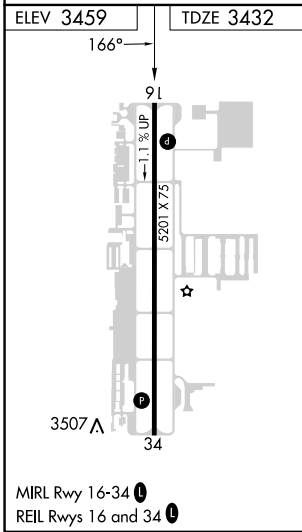
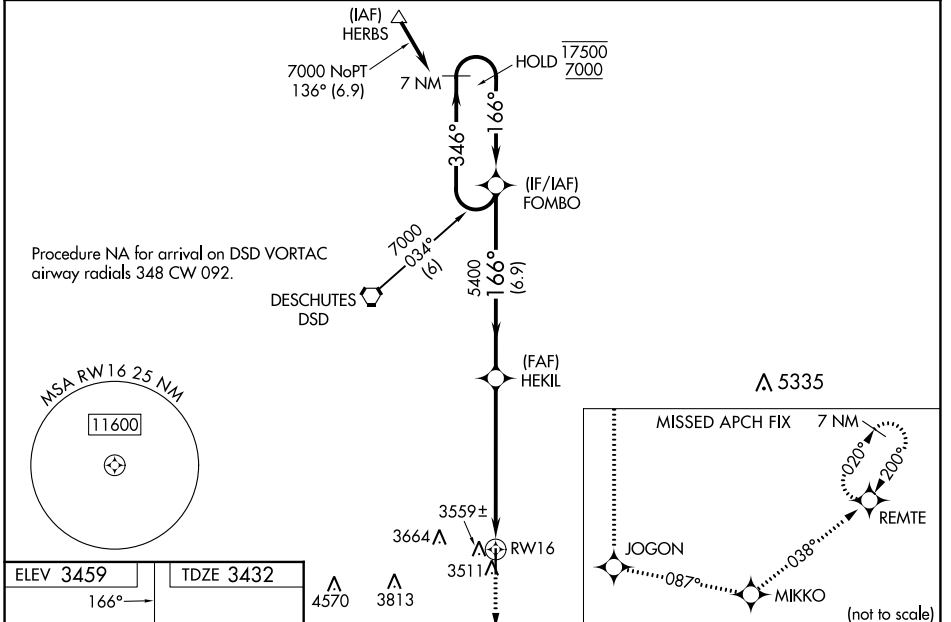
WAAS CH 81906 W16A	APP CRS 166°	Rwy Idg TDZE Apt Elev	5201 3432 3459
----------------------------------------	------------------------	-----------------------------	-------------------------------------------

RNAV (GPS) Z RWY 16

BEND MUNI (BDN)

RNP APCH - GPS.	MISSED APPROACH: Climb to 7400 direct JOGON and on track 087° to MIKKO and on track 038° to REMTE and hold, continue climb-in-hold to 7400.
-----------------	---------------------------------------------------------------------------------------------------------------------------------------------

AWOS-3 134.425	SEATTLE CENTER 126.15 269.475	UNICOM 123.0 (CTAF)
--------------------------	-----------------------------------------	-------------------------------



CATEGORY	A	B	C	D
LPV DA		3682- ³ / ₄	250 (300- ³ / ₄)	
LNAV/VNAV DA		3740- ⁷ / ₈	308 (300- ⁷ / ₈)	
LNAV MDA	3820-1	388 (400-1)	3820-1 ¹ / ₈	388 (400-1 ¹ / ₈)
C CIRCLING	3960-1 501 (600-1)	3980-1 521 (600-1)	4120-1 ³ / ₄ 661 (700-1 ³ / ₄)	4640-3 1181 (1200-3)

NW-1, 22 FEB 2024 to 21 MAR 2024

NW-1, 22 FEB 2024 to 21 MAR 2024

VORTAC DSD 117.6 Chan 123	APP CRS 136°	Rwy Idg TDZE 3432 Apt Elev 3459
-----------------------------------------------	------------------------	-----------------------------------------------------

VOR RWY 16

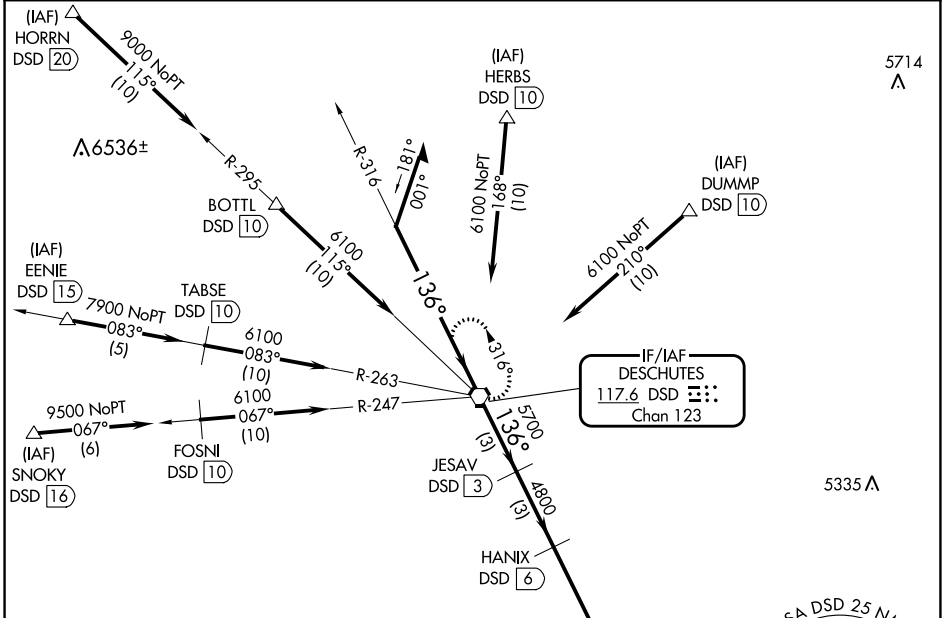
BEND MUNI (BDN)

DME required.

⚠ Rwy 16 helicopter visibility reduction below 3/4 SM N/A. When local altimeter setting not received, use Redmond altimeter setting and increase all MDAs 100 feet and increase S-16 visibility Cats C and D 1/2 SM, and Circling visibility Cat C 1/2 SM.

MISSED APPROACH: Climb to 4700 then climbing right turn to 7000 direct DSD VORTAC and hold, continue climb-in-hold to 7000.

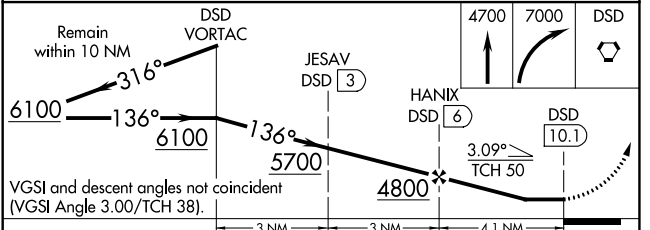
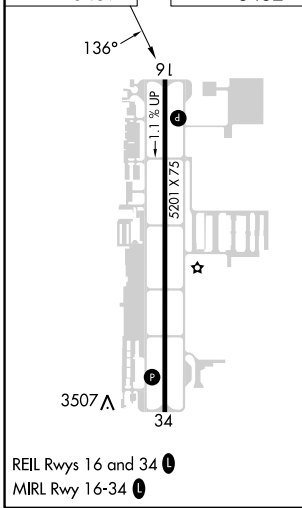
AWOS-3 134.425	SEATTLE CENTER 126.15 269.475	UNICOM 123.0 (CTAF) ①
--------------------------	-----------------------------------------	---------------------------------



NW-1, 22 FEB 2024 to 21 MAR 2024

NW-1, 22 FEB 2024 to 21 MAR 2024

ELEV 3459	TDZE 3432
------------------	------------------



CATEGORY	A	B	C	D
S-16	3880-1	448 (500-1)	3880-1 3/8	448 (500-1 3/8)
C CIRCLING	3960-1 501 (600-1)	3980-1 521 (600-1)	4120-1 3/4 661 (700-1 3/4)	4640-3 1181 (1200-3)