

MARIC FOUR DEPARTURE

AL-36 (FAA)

MEADOWS FIELD (BFL)
BAKERSFIELD, CALIFORNIA

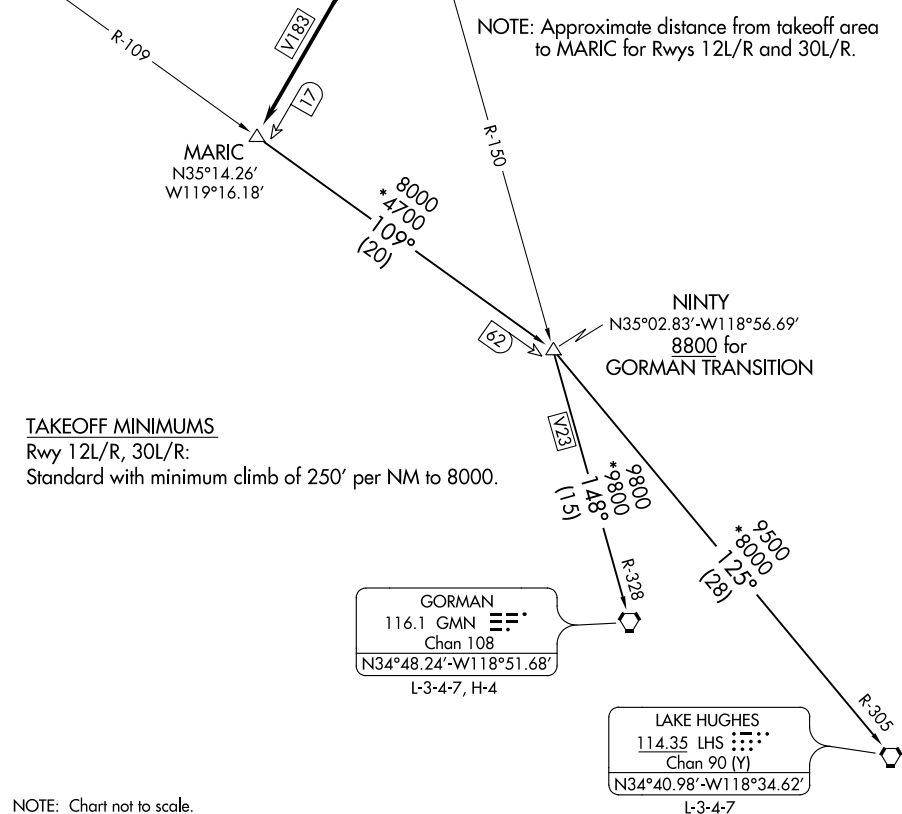
**TOP ALTITUDE:
ASSIGNED BY ATC**

AVENAL
117.1 AVE :--
Chan 118

R-196
SHAFTER
115.4 EHF :--
Chan 101

ATIS
118.6
GND CON
121.7
BAKERSFIELD TOWER*
118.1 257.8
BAKERSFIELD DEP CON*
126.45 270.3 (NORTH)
126.45 284.625 (SOUTH)

NOTE: Approximate distance from takeoff area to MARIC for Rwy 12L/R and 30L/R.



TAKEOFF MINIMUMS

Rwy 12L/R, 30L/R:

Standard with minimum climb of 250' per NM to 8000.

NOTE: Chart not to scale.

DEPARTURE ROUTE DESCRIPTION

TAKEOFF RUNWAYS 12L/R: Turn right heading 240°. Thence. . .

TAKEOFF RUNWAYS 30L/R: Turn left heading 240°. Thence. . .

. . . intercept and proceed on the EHF R-196 to MARIC. Thence via (transition) or (assigned route).

GORMAN TRANSITION (MARIC4.GMN): From over MARIC via AVE R-109 and GMN R-328 to GMN VORTAC.

LAKE HUGHES TRANSITION (MARIC4.LHS): From over MARIC via AVE R-109 and LHS R-305 to LHS VORTAC.

MARIC FOUR DEPARTURE

MEADOWS FOUR DEPARTURE

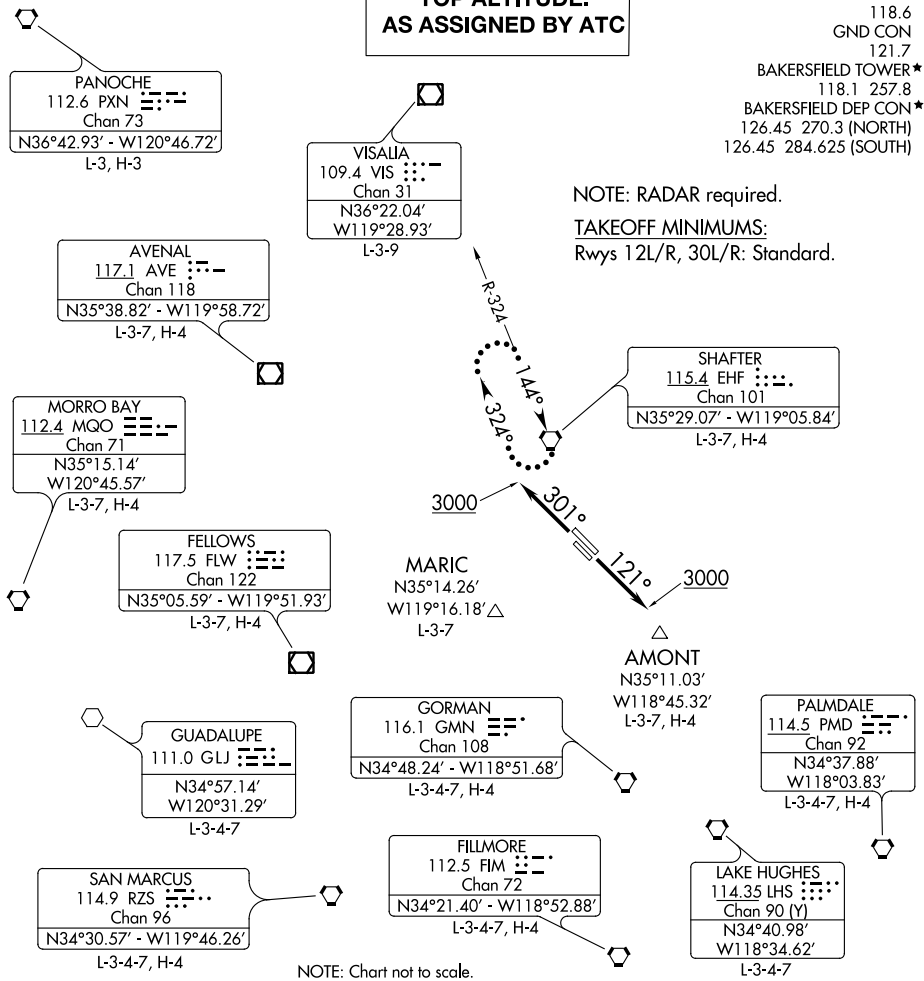
AL-36 (FAA)

MEADOWS FIELD (BFL)
BAKERSFIELD, CALIFORNIA

**TOP ALTITUDE:
AS ASSIGNED BY ATC**

ATIS
118.6
GND CON
121.7
BAKERSFIELD TOWER*
118.1 257.8
BAKERSFIELD DEP CON*
126.45 270.3 (NORTH)
126.45 284.625 (SOUTH)

NOTE: RADAR required.
TAKEOFF MINIMUMS:
Rwys 12L/R, 30L/R: Standard.



SW-3, 03 DEC 2020 to 31 DEC 2020

SW-3, 03 DEC 2020 to 31 DEC 2020

NOTE: Chart not to scale.



DEPARTURE ROUTE DESCRIPTION

TAKEOFF RUNWAYS 12L/R: Climb heading 121° to 3000 for vector to assigned route/fix. Thence. . . .

TAKEOFF RUNWAYS 30L/R: Climb heading 301° to 3000 for vector to assigned route/fix. Thence. . . .

. . . .Thence, maintain ATC assigned altitude. Expect clearance to requested altitude five minutes after departure.

LOST COMMUNICATIONS: If no radio contact for two minutes, proceed direct SHAFER VORTAC and hold. Climb in holding pattern to expected altitude prior to proceeding on course.

MEADOWS FOUR DEPARTURE

(WRING4.WRING) 18032

WRING FOUR DEPARTURE

AL-36 (FAA)

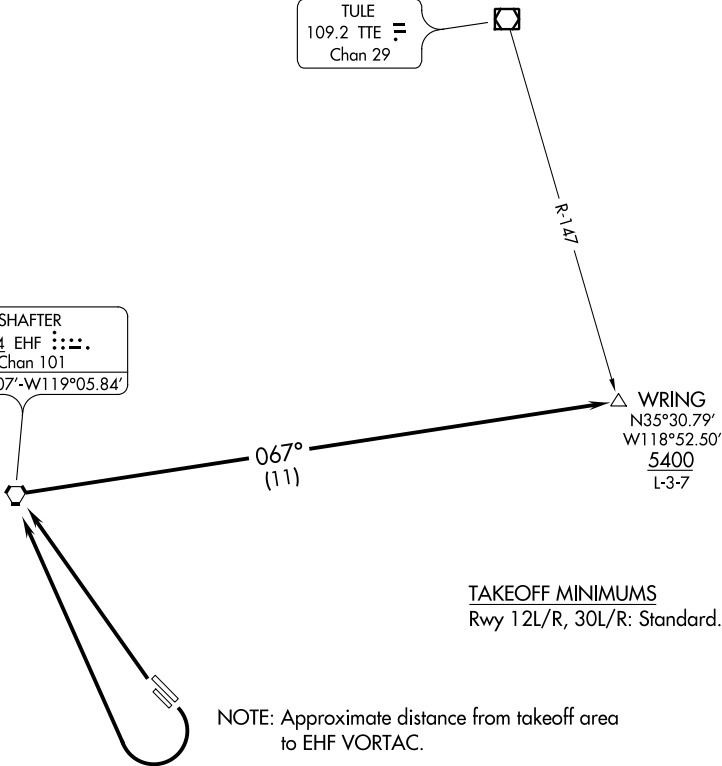
MEADOWS FIELD (BFL)
BAKERSFIELD, CALIFORNIA

ATIS
118.6
GND CON
121.7
BAKERSFIELD TOWER *
118.1 257.8
BAKERSFIELD DEP CON *
126.45 270.3 (NORTH)
126.45 284.625 (SOUTH)

**TOP ALTITUDE:
ASSIGNED BY ATC**

TULE
109.2 TTE
Chan 29

SHAFTER
115.4 EHF
Chan 101
N35°29.07'-W119°05.84'



TAKEOFF MINIMUMS
Rwy 12L/R, 30L/R: Standard.

NOTE: Approximate distance from takeoff area to EHF VORTAC.

NOTE: Chart not to scale.



DEPARTURE ROUTE DESCRIPTION

TAKEOFF RUNWAYS 12L/R: Climbing right turn direct EHF VORTAC. Thence. . . .

TAKEOFF RUNWAYS 30L/R: Climb direct EHF VORTAC. Thence. . . .

. . . .From over EHF VORTAC via EHF R-067 to cross WRING at or above 5400. Thence via (assigned route).

WRING FOUR DEPARTURE

(WRING4.WRING) 26MAY16

BAKERSFIELD, CALIFORNIA
MEADOWS FIELD (BFL)

SW-3, 03 DEC 2020 to 31 DEC 2020

SW-3, 03 DEC 2020 to 31 DEC 2020