

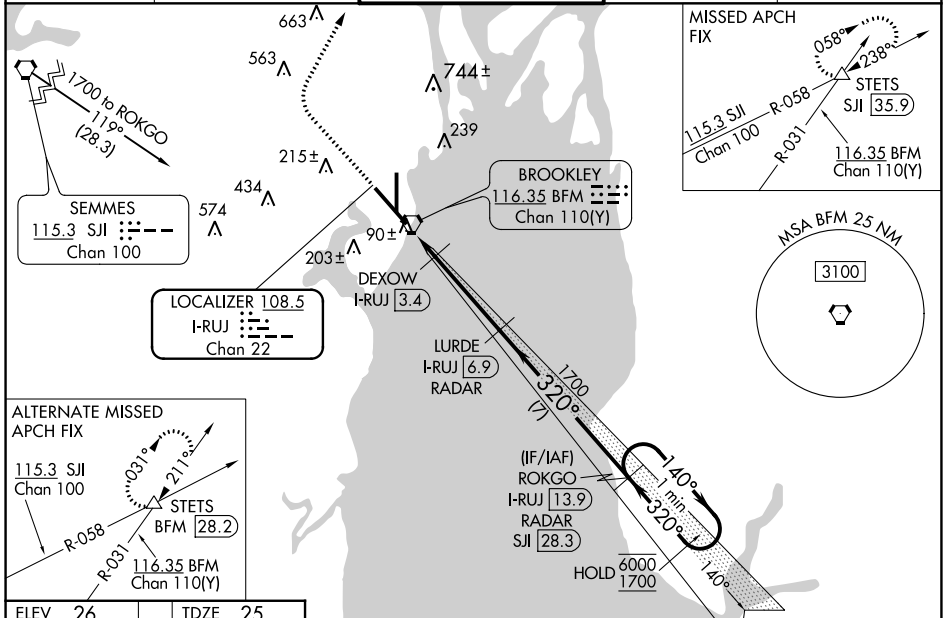
LOC/DME I- RUJ	APP CRS	Rwy Idg	9618
108.5	320°	TDZE	25
Chan 22		Apt Elev	26

ILS or LOC RWY 32

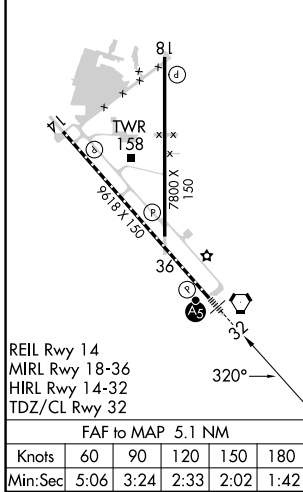
MOBILE INTL (BFM)

DME or RADAR required.		MALSR	MISSED APPROACH: Climb to 800 then climbing right turn to 2000 on heading 030° and on SJJ R-058 to STETS INT/SJJ 35.9 DME and hold.
For inop ALS, increase S-LOC 32 Cat C/D visibility to 1¾ and DEXOW S-LOC 32 Cat C/D visibility to RVR 4500.			

ATIS 135.575	MOBILE APP CON ★ 118.5 269.3	INTERNATIONAL TOWER ★ 118.8 (CTAF) 251.1	GND CON 121.7 239.3	UNICOM 122.95
------------------------	--	--	-------------------------------	-------------------------



ELEV 26	TDZE 25
---------	---------



SE-4, 22 FEB 2024 to 21 MAR 2024

SE-4, 22 FEB 2024 to 21 MAR 2024

WAAS CH 50411 W14A	APP CRS 140°	Rwy Idg 9618 TDZE 26 Apt Elev 26
--	------------------------	---

RNAV (GPS) RWY 14

MOBILE INTL (BFM)

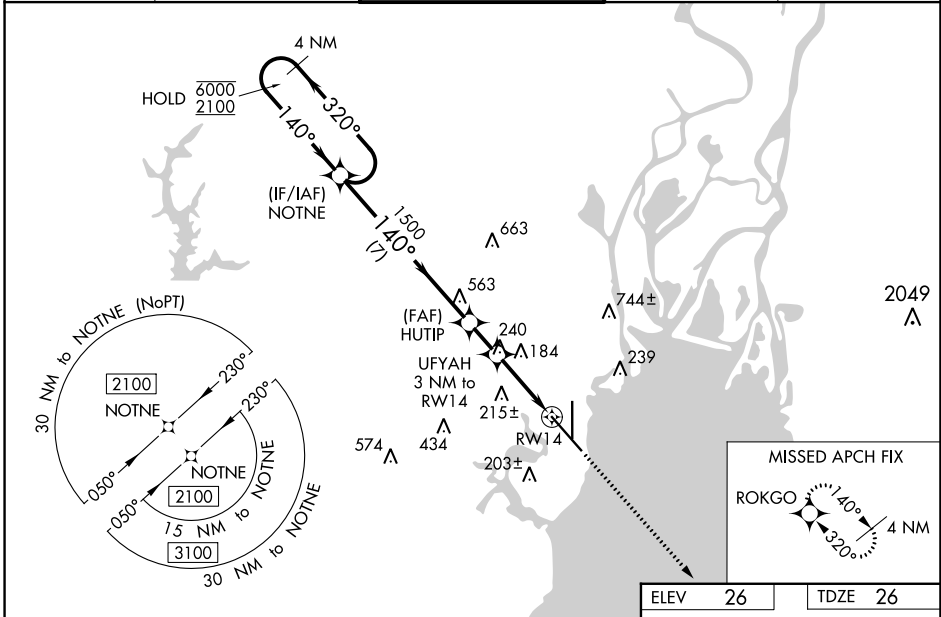
RNP APCH - GPS.



Rwy 14 helicopter visibility reduction below 3/4 SM NA. For uncompensated Baro-VNAV systems, LNAV/VNAV NA below -2°C or above 54°C.

MISSED APPROACH:
Climb to 1700 direct
ROKGO and hold.

ATIS 135.575	MOBILE APP CON * 118.5 269.3	INTERNATIONAL TOWER* 118.8 (CTAF) 0 251.1	GND CON 121.7 239.3	UNICOM 122.95
------------------------	--	---	-------------------------------	-------------------------



SE-4, 22 FEB 2024 to 21 MAR 2024

SE-4, 22 FEB 2024 to 21 MAR 2024

4 NM Holding Pattern		NOTNE		HUTIP 1500		UFYAH 3 NM to RW14		1700 ROKGO	
6000 ← 320°		2100 → 140°		1500		1020		↑	
GP 3.00° TCH 50		7 NM		1.5 NM		1.9 NM		1.1 NM	
CATEGORY	A	B	C	D					
LPV DA	308-7/8		282 (300-7/8)						
LNAV/VNAV DA	396-1		370 (400-1)						
LNAV MDA	440-1	414 (500-1)		440-1 1/8	414 (500-1 1/8)				
CIRCLING	680-1	654 (700-1)		680-1 3/4	1100-3				
				654 (700-1 3/4)	1074 (1100-3)				

140° 81 150 130 7800 X 150 36 2018 X 150 158 TWR 36 45

REIL Rwy 14
MIRL Rwy 18-36
HIRL Rwy 14-32
TDZ/CL Rwy 32

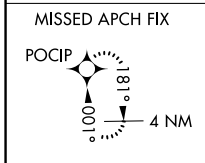
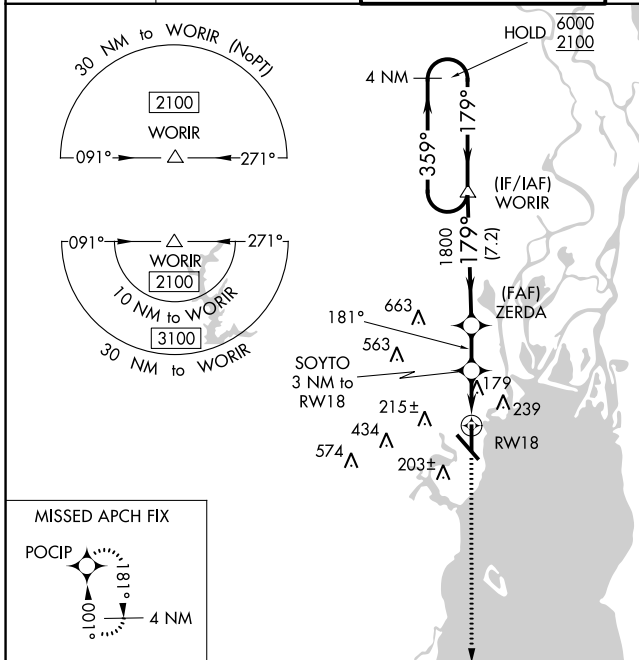
WAAS CH 97611 W18A	APP CRS 181°	Rwy Idg 7800 TDZE 26 Apt Elev 26
--	------------------------	---

RNAV (GPS) RWY 18

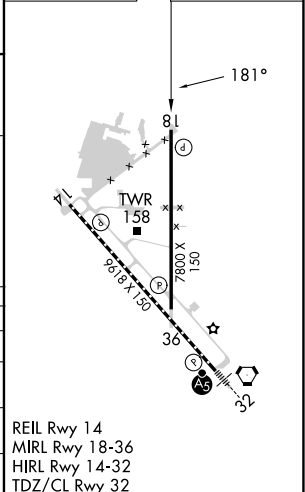
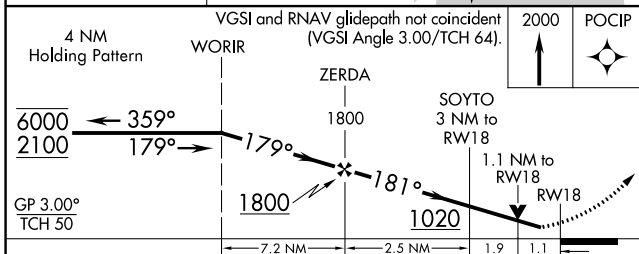
MOBILE INTL (BFM)

RNP APCH - GPS.		<p>⚠ Rwy 18 helicopter visibility reduction below 3/4 SM NA. For uncompensated Baro-VNAV systems, LNAV/VNAV NA below -2°C or above 54°C.</p>	<p>MISSED APPROACH: Climb to 2000 direct POCIP and hold.</p>

<p>ATIS 135.575</p>	<p>MOBILE APP CON * 118.5 269.3</p>	<p>INTERNATIONAL TOWER * 118.8 (CTAF) 0 251.1</p>	<p>GND CON 121.7 239.3</p>	<p>UNICOM 122.95</p>
--------------------------------	--	--	---------------------------------------	---------------------------------



ELEV 26	TDZE 26
---------	---------



CATEGORY	A	B	C	D
LPV DA		276-1	250 (300-1)	
LNAV/VNAV DA		419-1 1/8	393 (400-1 1/8)	
LNAV MDA	440-1	414 (500-1)	440-1 1/8	414 (500-1 1/8)
C CIRCLING	680-1	654 (700-1)	680-3/4 654 (700-3/4)	1100-3 1074 (1100-3)

REIL Rwy 14
MIRL Rwy 18-36
HIRL Rwy 14-32
TDZ/CL Rwy 32

SE-4, 22 FEB 2024 to 21 MAR 2024

SE-4, 22 FEB 2024 to 21 MAR 2024

WAAS CH 70304 W32A	APP CRS 320°	Rwy ldg TDZE Apt Elev	9618 25 26
--	------------------------	-----------------------------	---------------------------------------

RNAV (GPS) RWY 32

MOBILE INTL (BFM)

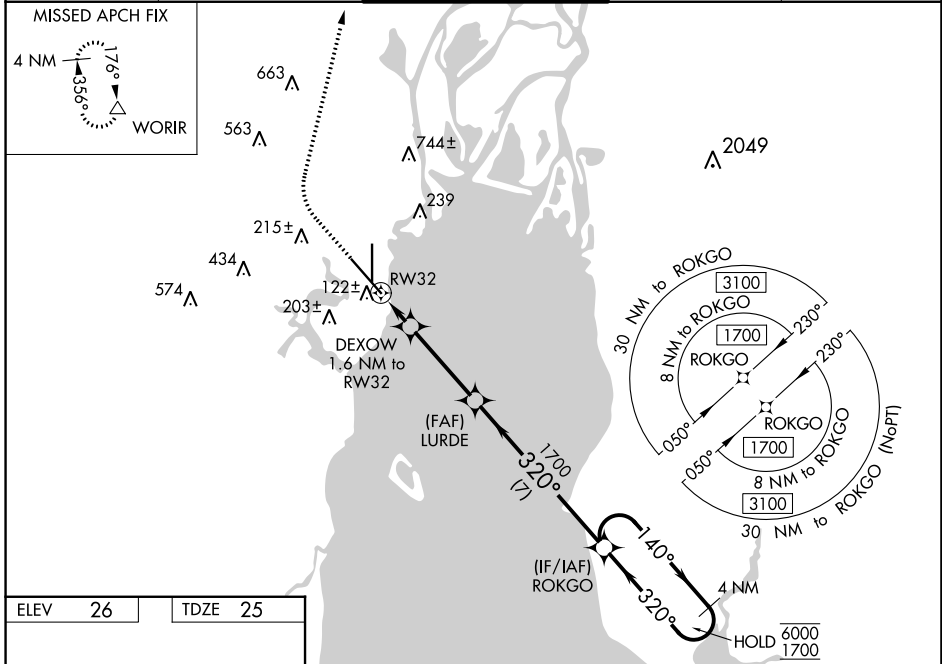
RNP APCH - GPS.

▼ For uncompensated Baro-VNAV systems, LNAV/VNAV NA below -2°C or above 54°C. For inop ALS, increase LNAV/VNAV all Cats visibility to RVR 4000, and LNAV Cats C/D visibility to RVR 5500.

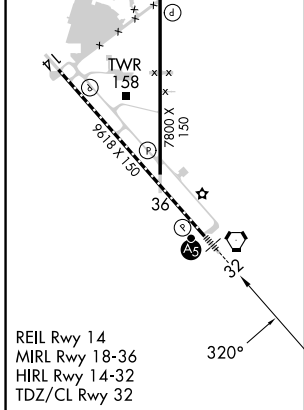


MISSED APPROACH: Climb to 800 then climbing right turn to 2000 direct WORIR and hold.

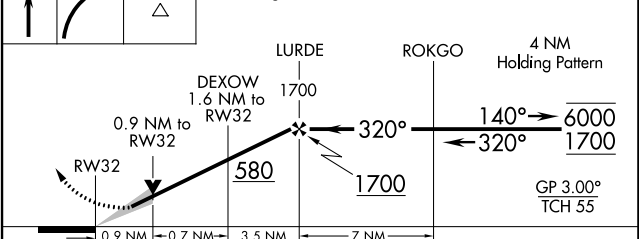
ATIS 135.575	MOBILE APP CON ★ 118.5 269.3	INTERNATIONAL TOWER★ 118.8 (CTAF) 0 251.1	GND CON 121.7 239.3	UNICOM 122.95
------------------------	--	--	-------------------------------	-------------------------



ELEV 26	TDZE 25
----------------	----------------



800 2000 WORIR VGSI and RNAV glidepath not coincident (VGSI Angle 3.00/TCH 71).



CATEGORY	A	B	C	D
LPV DA		225/18	200 (200-½)	
LNAV/VNAV DA		283/24	258 (300-½)	
LNAV MDA	380/24	355 (400-½)	380/30	355 (400-¾)
C CIRCLING	680-1	654 (700-1)	680-1¾ 654 (700-1¾)	1100-3 1074 (1100-3)

SE-4, 22 FEB 2024 to 21 MAR 2024

SE-4, 22 FEB 2024 to 21 MAR 2024

WAAS CH 56511 W36A	APP CRS 001°	Rwy Idg 7800 TDZE 26 Apt Elev 26
--	------------------------	---

RNAV (GPS) RWY 36

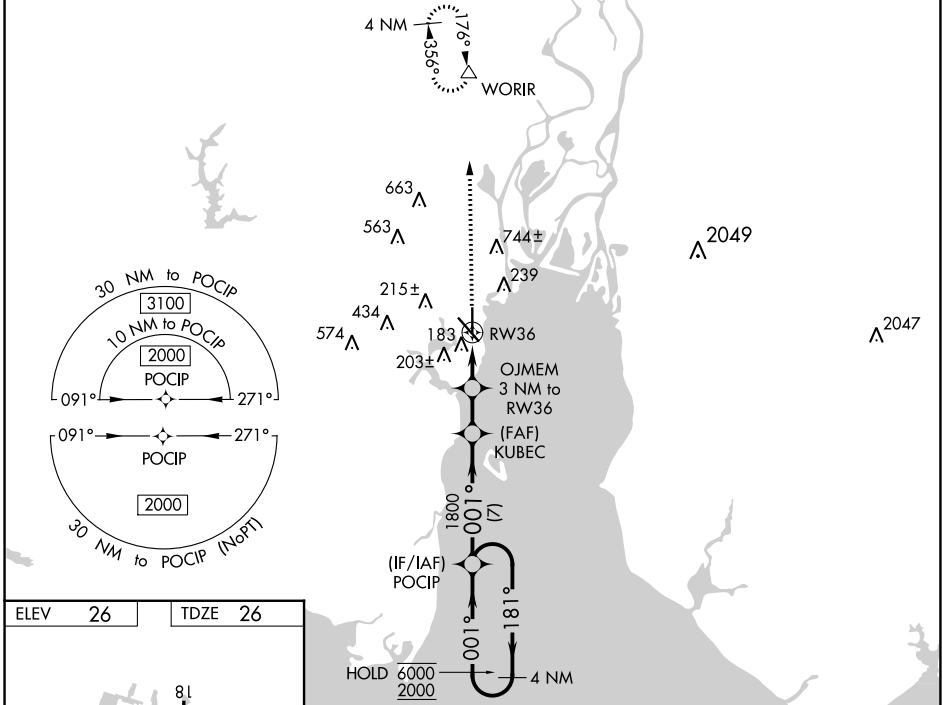
MOBILE INTL (BFM)

RNP APCH - GPS.

⚠ Rwy 36 helicopter visibility reduction below 3/4 SM NA.
For uncompensated Baro-VNAV systems, LNAV/VNAV NA below -2°C or above 54°C.

MISSED APPROACH:
Climb to 2300 direct
WORIR and hold.

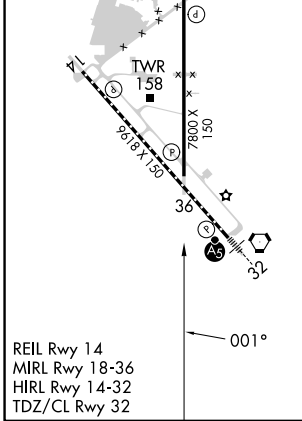
ATIS 135.575	MOBILE APP CON * 118.5 269.3	INTERNATIONAL TOWER * 118.8 (CTAF) 251.1	GND CON 121.7 239.3	UNICOM 122.95
------------------------	--	--	-------------------------------	-------------------------



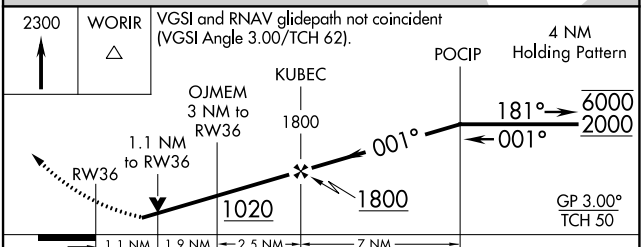
SE-4, 22 FEB 2024 to 21 MAR 2024

SE-4, 22 FEB 2024 to 21 MAR 2024

ELEV 26	TDZE 26
----------------	----------------



REIL Rwy 14
MIRL Rwy 18-36
HIRL Rwy 14-32
TDZ/CL Rwy 32



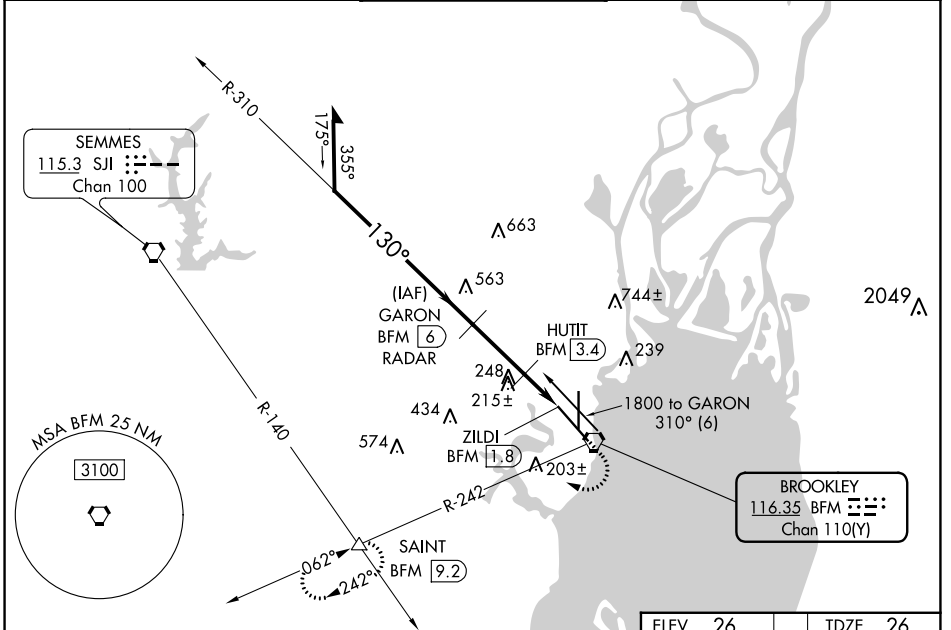
CATEGORY	A	B	C	D
LPV DA		304-1	278 (300-1)	
LNAV/VNAV DA		364-1	338 (400-1)	
LNAV MDA	440-1	414 (500-1)	440-1 1/8	414 (500-1 1/8)
C CIRCLING	680-1	654 (700-1)	680-1 3/4	1100-3
			654 (700-1 3/4)	1074 (1100-3)

VORTAC BFM 116.35 Chan 110(Y)	APP CRS 130°	Rwy Idg TDZE Apt Elev	9618 26 26
---	------------------------	-----------------------------	---------------------------------------

VOR RWY 14

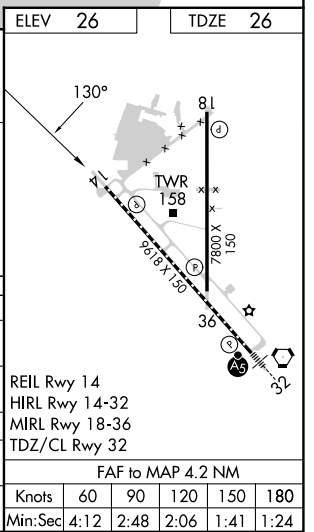
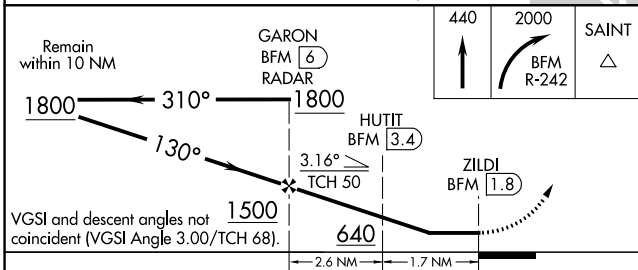
MOBILE INTL (BFM)

DME or RADAR required.		MISSED APPROACH: Climb to 440 then climbing right turn to 2000 on BFM VORTAC R-242 to SAINT INT/ BFM 9.2 DME and hold, continue climb-in-hold to 2000.		
ATIS 135.575	MOBILE APP CON* 118.5 269.3	INTERNATIONAL TOWER* 118.8 (CTAF) 0 251.1	GND CON 121.7 239.3	UNICOM 122.95



SE-4, 22 FEB 2024 to 21 MAR 2024

SE-4, 22 FEB 2024 to 21 MAR 2024



CATEGORY	A	B	C	D
S-14	640-1	614 (700-1)	640-1¾	614 (700-1¾)
C CIRCLING	680-1	654 (700-1)	680-1¾	1100-3 654 (700-1¾) 1074 (1100-3)
HUTIT DME FIX MINIMUMS				
S-14	500-1	474 (500-1)	500-1⅜	474 (500-1⅜)
C CIRCLING	680-1	654 (700-1)	680-1¾	1100-3 654 (700-1¾) 1074 (1100-3)

REIL Rwy 14	HIRL Rwy 14-32	MIRL Rwy 18-36	TDZ/CL Rwy 32		
FAF to MAP 4.2 NM					
Knots	60	90	120	150	180
Min:Sec	4:12	2:48	2:06	1:41	1:24

VORTAC BFM 116.35 Chan 110(Y)	APP CRS 162°	Rwy Idg 7800 TDZE 26 Apt Elev 26
---	------------------------	---

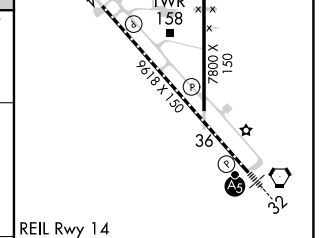
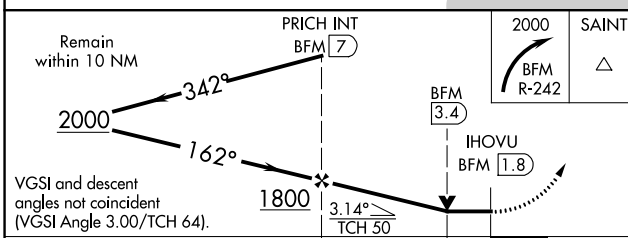
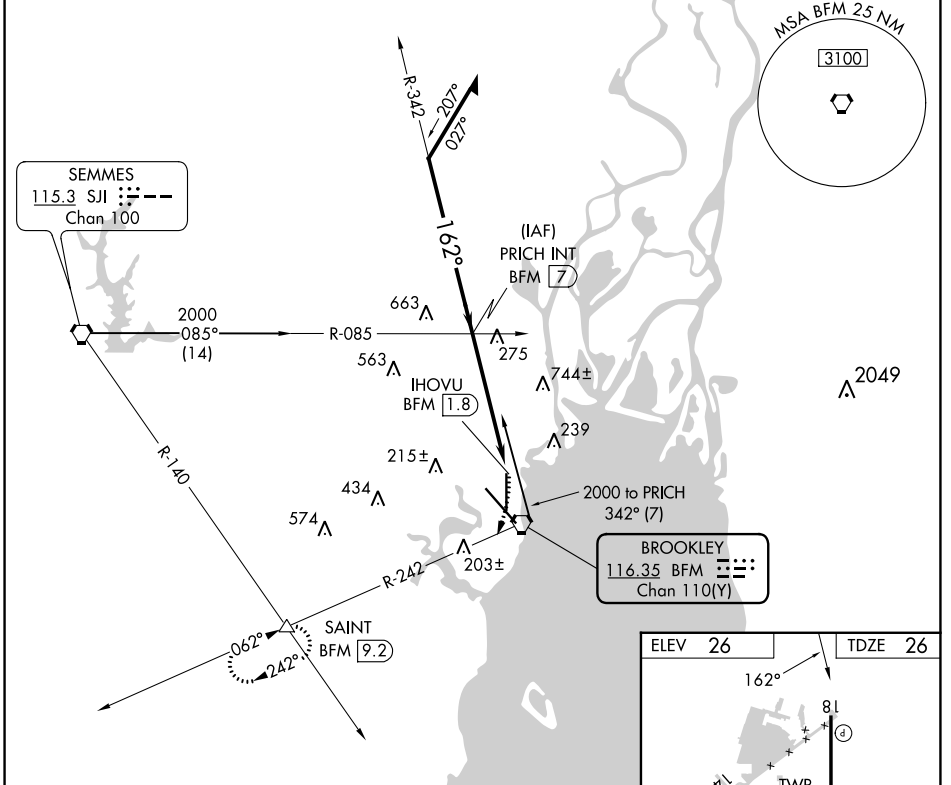
VOR RWY 18

MOBILE INTL (BFM)

⚠ Helicopter visibility reduction below 3/4 SM NA. When local altimeter setting not received; use Mobile Rgnl altimeter setting and increase all MDA 60 feet and increase S-18 Cat C visibility 1/8 mile and Circling Cat C visibility 1/4 SM. VDP NA with Mobile Rgnl altimeter setting.

MISSED APPROACH: Climbing right turn to 2000 on BFM VORTAC R-242 to SAINT INT/BFM 9.2 DME and hold.

ATIS 135.575	MOBILE APP CON * 118.5 269.3	INTERNATIONAL TOWER * 118.8 (CTAF) 0 251.1	GND CON 121.7 239.3	UNICOM 122.95
------------------------	--	--	-------------------------------	-------------------------



CATEGORY	A	B	C	D	Knots					
S-18	580-1	554 (600-1)	580-1 5/8 554 (600-1 5/8)	580-1 3/4 554 (600-1 3/4)	60	90	120	150	180	
C CIRCLING	680-1	654 (700-1)	680-1 3/4 654 (700-1 3/4)	1100-3 1074 (1100-3)	Min:Sec	5:12	3:28	2:36	2:05	1:44

SE-4, 22 FEB 2024 to 21 MAR 2024

SE-4, 22 FEB 2024 to 21 MAR 2024

VORTAC BFM 116.35 Chan 110(Y)	APP CRS 333°	Rwy Idg TDZE Apt Elev	9618 25 26
--	------------------------	-----------------------------	---------------------------------------

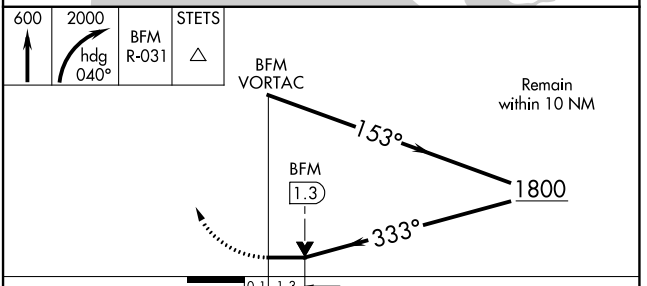
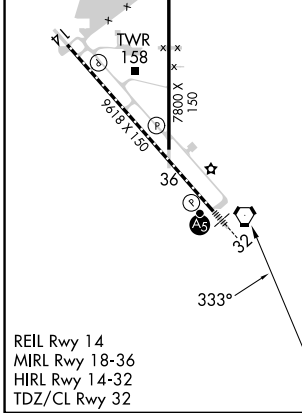
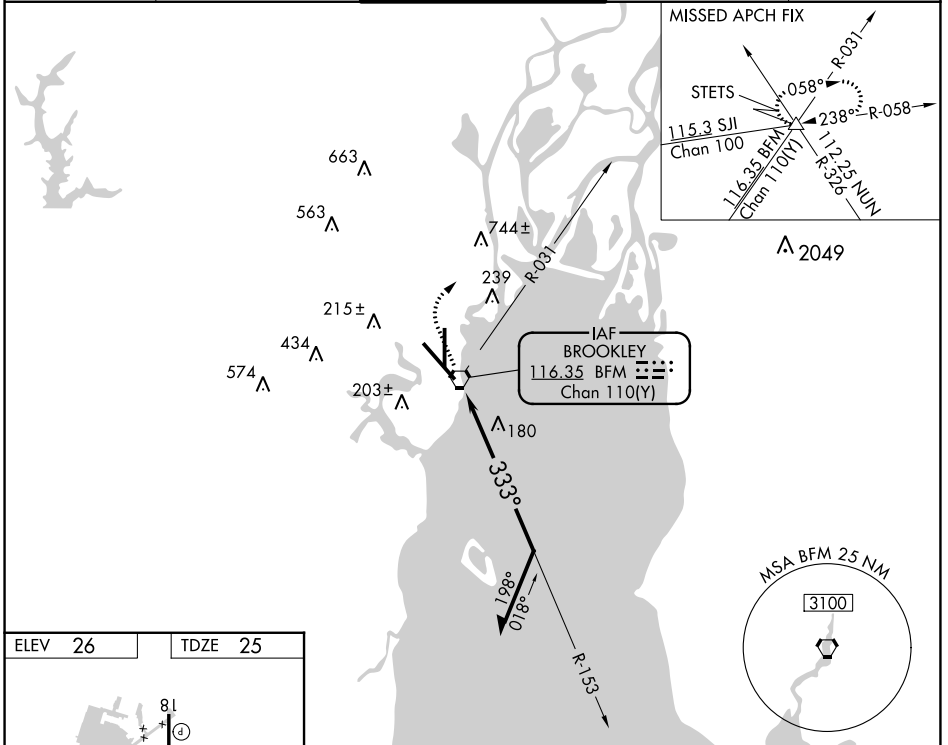
VOR RWY 32

MOBILE INTL (BFM)

⚠ When local altimeter setting not received, use Mobile Rgnl altimeter setting and increase all MDAs 60 feet. For inop MALS, increase S-32 Cats C/D visibility to 1 $\frac{1}{2}$ SM. For inop MALS when using Mobile Rgnl altimeter setting, increase S-32 Cats C/D visibility to 1 $\frac{1}{2}$ SM.

MALS MISSED APPROACH: Climb to 600 then climbing right turn to 2000 via heading 040° and BFM VORTAC R-031 to STETS INT and hold.

ATIS 135.575	MOBILE APP CON ★ 118.5 269.3	INTERNATIONAL TOWER★ 118.8 (CTAF) 0 251.1	GND CON 121.7 239.3	UNICOM 122.95
------------------------	--	--	-------------------------------	-------------------------



CATEGORY	A	B	C	D
S-32	540/24	515 (600- $\frac{1}{2}$)	540/55	515 (600-1)
☐ CIRCLING	680-1	654 (700-1)	680-1 $\frac{3}{4}$ 654 (700- $\frac{3}{4}$)	1100-3 1074 (1000-3)