

(BOI3.BOI) 18312

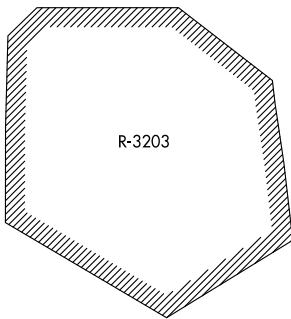
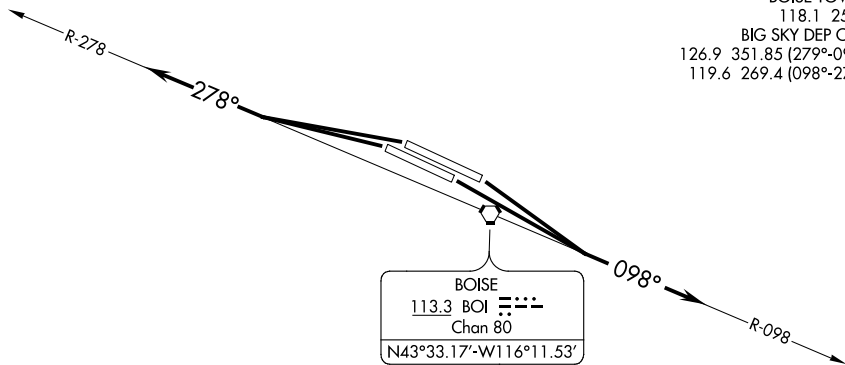
# BOISE THREE DEPARTURE

AL-57 (FAA)

BOISE AIR TERMINAL/GOWEN FIELD (BOI)  
BOISE, IDAHO

**TOP ALTITUDE:**  
**16000**

D-ATIS	123.9	290.4
CLNC DEL	125.9	323.2
GND CON	121.7	348.6
BOISE TOWER	118.1	257.8
BIG SKY DEP CON	126.9	351.85 (279°-097°)
	119.6	269.4 (098°-278°)



NOTE: RADAR required.

### TAKEOFF MINIMUMS

Rwys 28L/R: Standard.

Rwys 10L/R: Standard with minimum climb of 240' per NM to 5700.

NOTE: Chart not to scale.



### DEPARTURE ROUTE DESCRIPTION

TAKEOFF RUNWAY 10L/R: Climb to 16000 or lower assigned altitude on BOI VORTAC R-098, thence. . . .

TAKEOFF RUNWAY 28L/R: Climb to 16000 or lower assigned altitude on BOI VORTAC R-278, thence. . . .

. . . .Expect RADAR vectors to assigned route, expect filed altitude 10 minutes after departure.

LOST COMMUNICATIONS: If not in contact with Boise Departure Control at 10000 or assigned altitude if lower, continue climb to assigned altitude and thence on assigned route.

# BOISE THREE DEPARTURE

(BOI3.BOI) 26MAY16

BOISE, IDAHO  
BOISE AIR TERMINAL/GOWEN FIELD (BOI)

NW-1, 15 AUG 2019 to 12 SEP 2019

NW-1, 15 AUG 2019 to 12 SEP 2019