

LOC I-BRL 108.9	APP CRS 359°	Rwy Idg TDZE Apt Elev	6102 694 698
---------------------------	------------------------	-----------------------------	---

ILS or LOC RWY 36

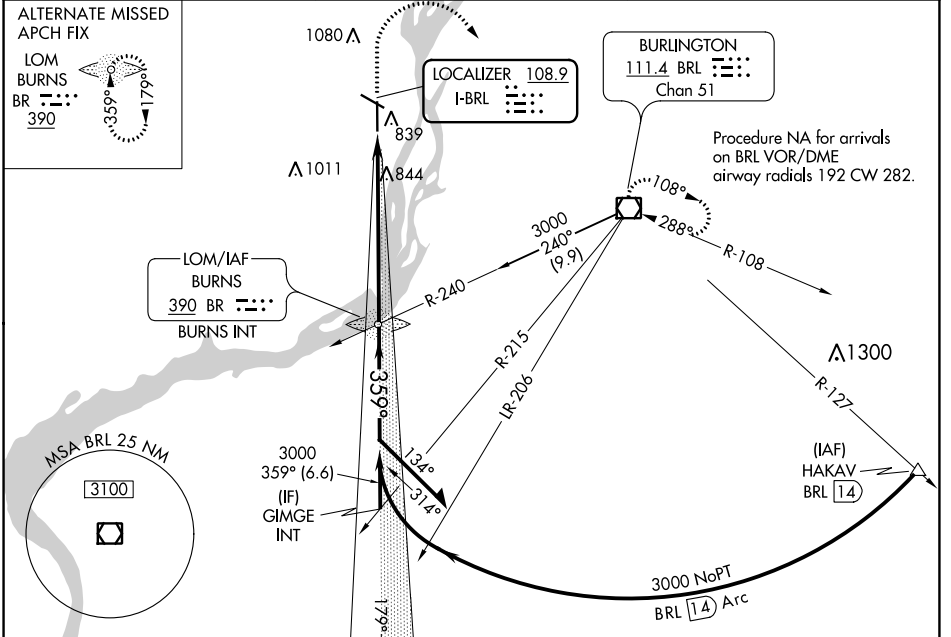
SOUTHEAST IOWA RGNL (B.R.L)

NA

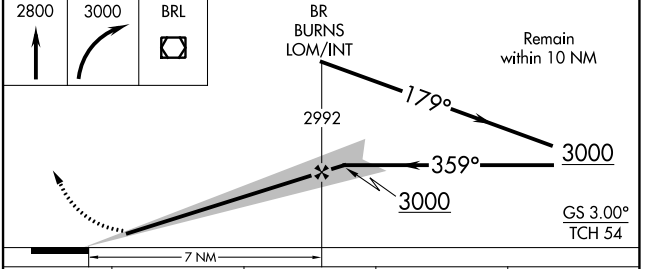
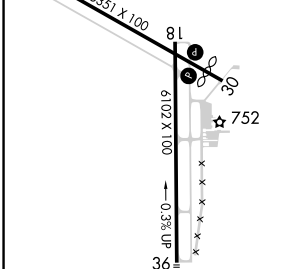
MALSR

MISSED APPROACH: Climb to 2800 then climbing right turn to 3000 direct BRL VOR/DME and hold.

ASOS 118.025	CHICAGO CENTER 135.6 370.95	UNICOM 123.0 (CTAF)
------------------------	---------------------------------------	-------------------------------



ELEV 698	D TDZE 694
REIL Rwy 12, 18 and 30	
MIRL Rwy 12-30	
HIRL Rwy 18-36	



FAF to MAP 7 NM	Category	A	B	C	D
	S-ILS 36	894-1/2 200 (200-1/2)			
	S-LOC 36	1140-1/2 446 (500-1/2)	1140-7/8 446 (500-7/8)	1140-1 446 (500-1)	1140-1 446 (500-1)
CIRCLING		1180-1 482 (500-1)	1380-2 682 (700-2)	1380-2 1/4 682 (700-2 1/4)	1380-2 1/4 682 (700-2 1/4)

NC-3, 22 FEB 2024 to 21 MAR 2024

NC-3, 22 FEB 2024 to 21 MAR 2024

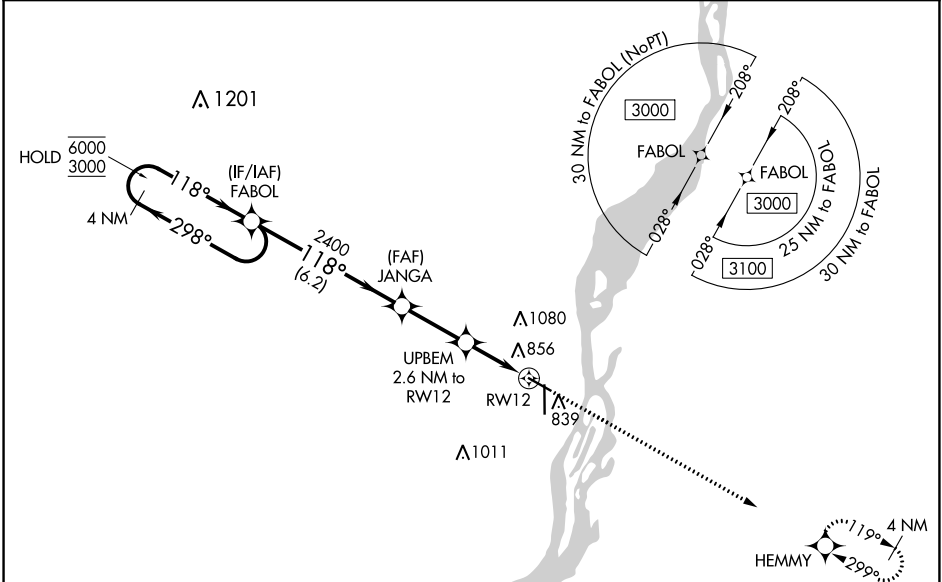
WAAS CH 48834 W12A	APP CRS 118°	Rwy Idg TDZE Apt Elev	5350 693 698
--	------------------------	-----------------------------	---

RNAV (GPS) RWY 12

SOUTHEAST IOWA RGNL (B.R.L.)

RNP APCH.	MISSED APPROACH: Climb to 3000 direct HEMMY and hold.
For uncompensated Baro-VNAV systems, procedure NA below -21°C or above 54°C.	

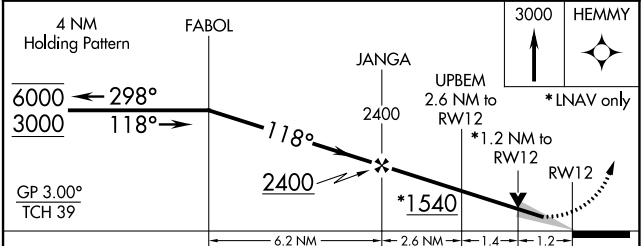
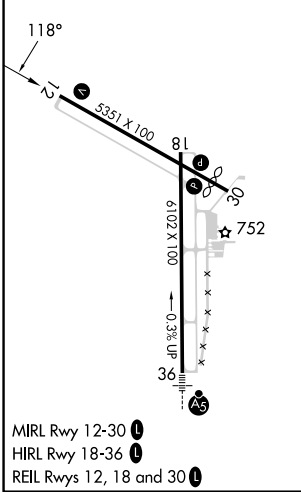
ASOS 118.025	CHICAGO CENTER 135.6 370.95	UNICOM 123.0 (CTAF) 0
------------------------	---------------------------------------	---------------------------------



NC-3, 22 FEB 2024 to 21 MAR 2024

NC-3, 22 FEB 2024 to 21 MAR 2024

ELEV 698	D	TDZE 693
----------	----------	----------



CATEGORY	A	B	C	D
LPV DA	943-1 250 (300-1)			NA
LNAV/VNAV DA	1017-1½ 324 (400-1½)			NA
LNAV MDA	1120-1 427 (500-1)	1120-1¼ 427 (500-1¼)		NA
C CIRCLING	1180-1 482 (500-1)	1380-2 682 (700-2)		NA

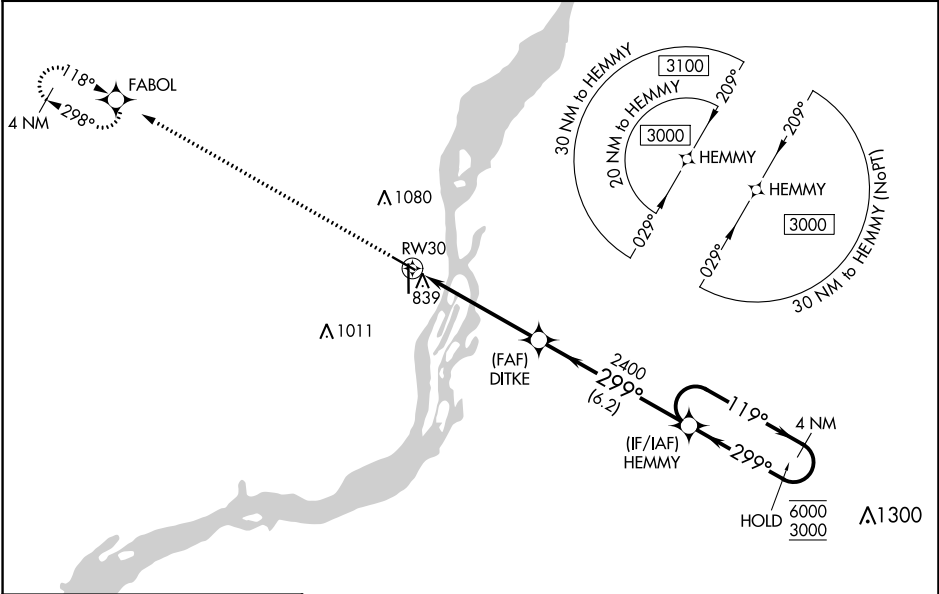
WAAS CH 45535 W30A	APP CRS 299°	Rwy Idg 4850 TDZE 697 Apt Elev 698
--	------------------------	---

RNAV (GPS) RWY 30

SOUTHEAST IOWA RGNL (B.R.L.)

RNP APCH.	MISSED APPROACH: Climb to 3000 direct FABOL and hold.
<p>▽ Rwy 30 helicopter visibility reduction below ¾ SM NA. ▲ For uncompensated Baro-VNAV systems, procedure NA below -21°C or above 54°C.</p>	

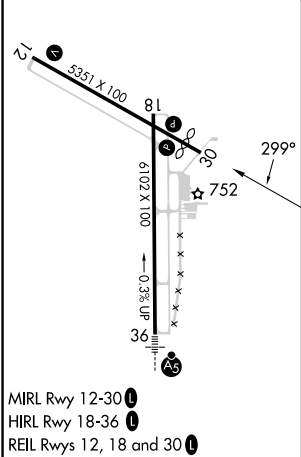
ASOS 118.025	CHICAGO CENTER 135.6 370.95	UNICOM 123.0 (CTAF)
------------------------	---------------------------------------	-------------------------------



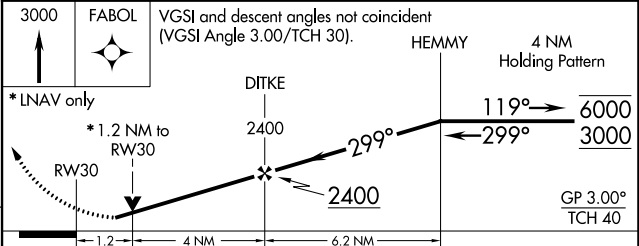
NC-3, 22 FEB 2024 to 21 MAR 2024

NC-3, 22 FEB 2024 to 21 MAR 2024

ELEV 698	D	TDZE 697
----------	----------	----------



- MIRL Rwy 12-30
- HIRL Rwy 18-36
- REIL Rwy 12, 18 and 30



CATEGORY	A	B	C	D
LPV DA	995-1 298 (300-1)			NA
LNAV/VNAV DA	989-1 292 (300-1)			NA
LNAV MDA	1100-1 403 (500-1)	1100-1 1/8 403 (500-1 1/8)		NA
C CIRCLING	1180-1 482 (500-1)	1380-2 682 (800-2)		NA

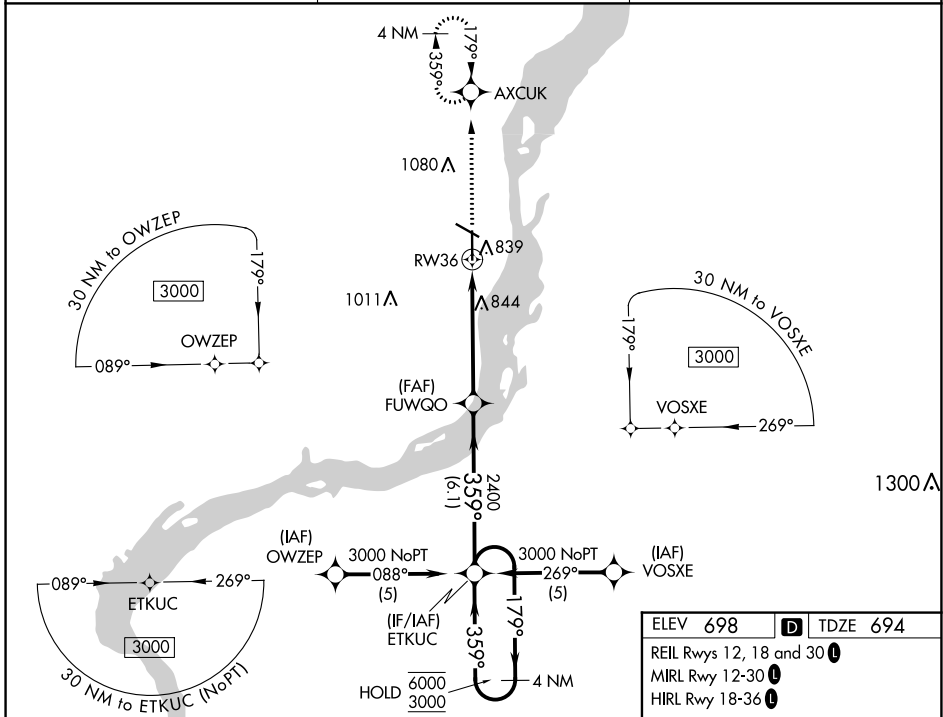
WAAS CH 42711 W36A	APP CRS 359°	Rwy Idg TDZE Apt Elev	6102 694 698
--	------------------------	-----------------------------	---

RNAV (GPS) RWY 36

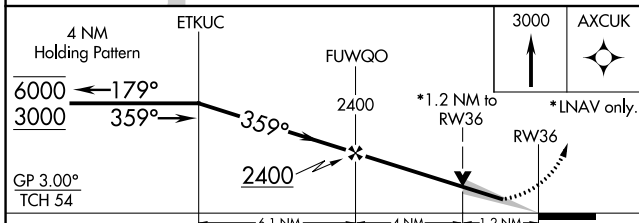
SOUTHEAST IOWA RGNL (B.R.L.)

RNP APCH.	MALSR	MISSED APPROACH: Climb to 3000 direct AXCUK and hold, continue climb-in-hold to 3000.
For uncompensated Baro-VNAV systems, LNAV/VNAV NA below -16°C or above 54°C.		

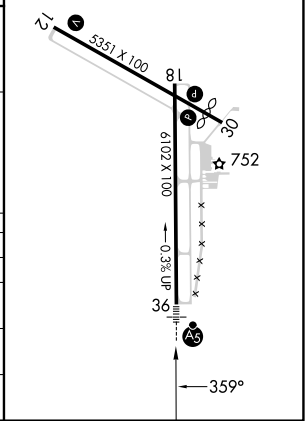
ASOS 118.025	CHICAGO CENTER 135.6 370.95	UNICOM 123.0 (CTAF)
------------------------	---------------------------------------	-------------------------------



ELEV 698	TDZE 694
REIL Rwy 12, 18 and 30	
MIRL Rwy 12-30	
HIRL Rwy 18-36	



CATEGORY	A	B	C	D
LPV DA	894-1/2	200 (200-1/2)		NA
LNAV/VNAV DA	1026-3/4	332 (400-3/4)		NA
LNAV MDA	1100-1/2	406 (500-1/2)	1100-3/4 406 (500-3/4)	NA
CIRCLING	1180-1	482 (500-1)	1380-2 682 (700-2)	NA



NC-3, 22 FEB 2024 to 21 MAR 2024

NC-3, 22 FEB 2024 to 21 MAR 2024

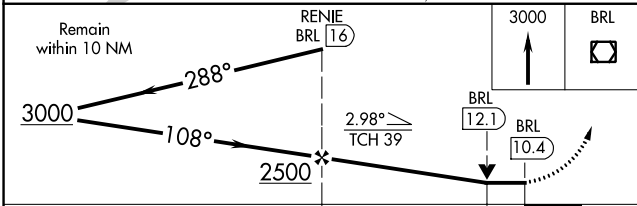
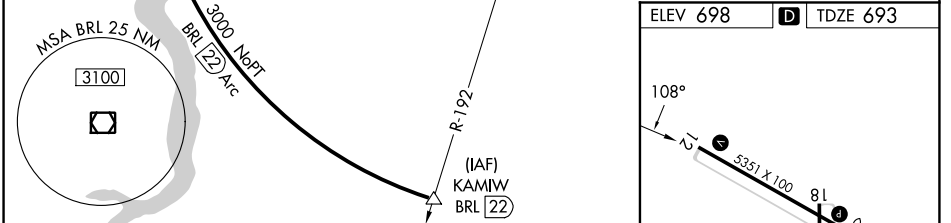
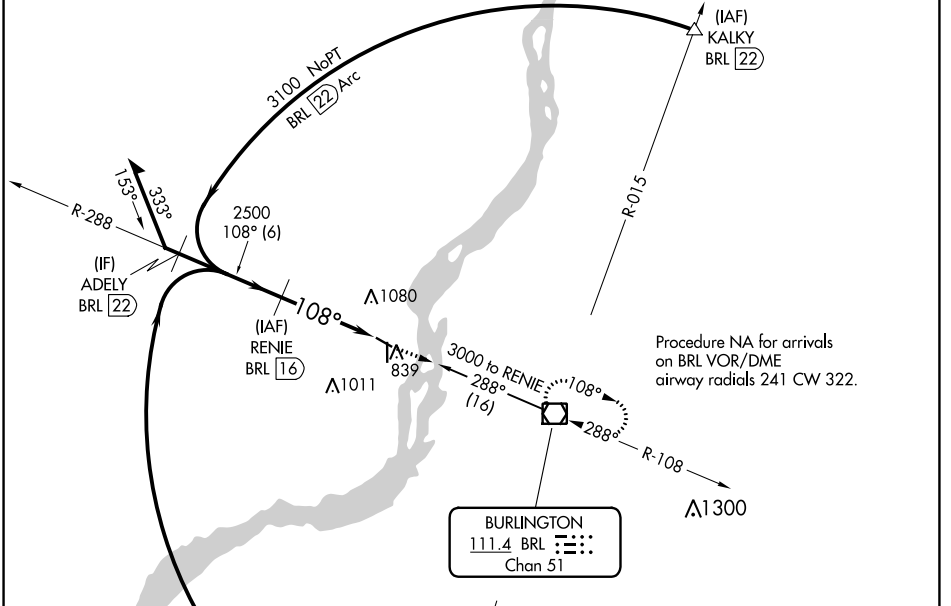
VOR/DME BRL 111.4 Chan 51	APP CRS 108°	Rwy Idg TDZE Apt Elev	5350 693 698
--	------------------------	-----------------------------	---

VOR RWY 12

SOUTHEAST IOWA RGNL (B.R.L.)

DME required.		MISSED APPROACH: Climb to 3000 direct BRL VOR/DME and hold.
---------------	--	---

ASOS 118.025	CHICAGO CENTER 135.6 370.95	UNICOM 123.0 (CTAF) 0
------------------------	---------------------------------------	---------------------------------



CATEGORY	A	B	C	D
S-12	1280-1	587 (600-1)	1280-1¾ 587 (600-1¾)	NA
C CIRCLING	1280-1	582 (600-1)	1380-2 682 (700-2)	NA

ELEV 698	D TDZE 693
----------	-------------------

MIRL Rwy 12-30 **L**
 HIRL Rwy 18-36 **L**
 REIL Rws 12, 18 and 30 **L**

NC-3, 22 FEB 2024 to 21 MAR 2024

NC-3, 22 FEB 2024 to 21 MAR 2024

VOR/DME BRL	APP CRS	Rwy Idg	4850
111.4	288°	TDZE	697
Chan 51		Apt Elev	698

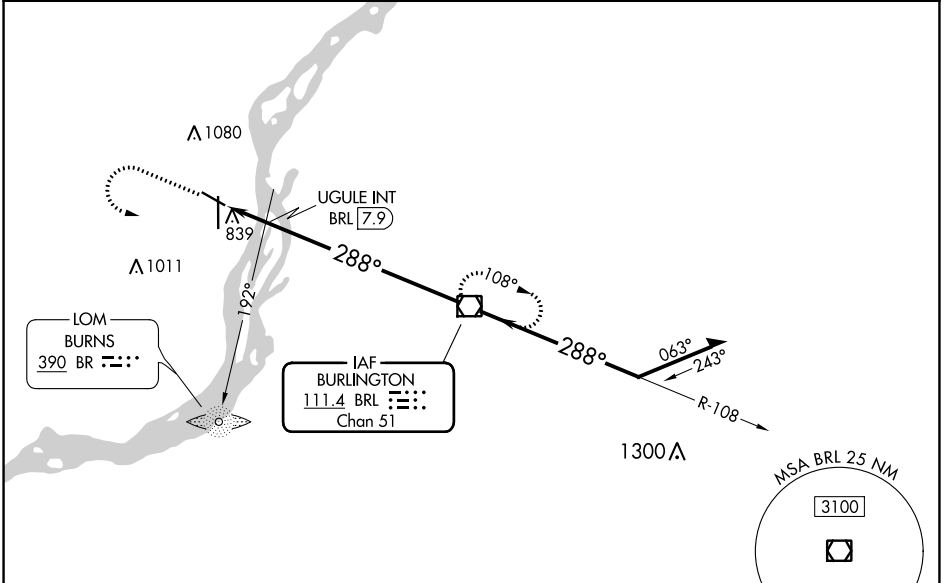
VOR RWY 30

SOUTHEAST IOWA RGNL (B.R.L.)

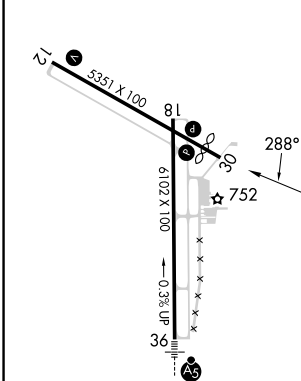
⚠ Rwy 30 helicopter visibility reduction below 3/4 SM NA.

⚠ MISSED APPROACH: Climb to 2000 then climbing left turn to 3000 direct BRL VOR/DME and hold.

ASOS 118.025	CHICAGO CENTER 135.6 370.95	UNICOM 123.0 (CTAF) 0
------------------------	---------------------------------------	---------------------------------



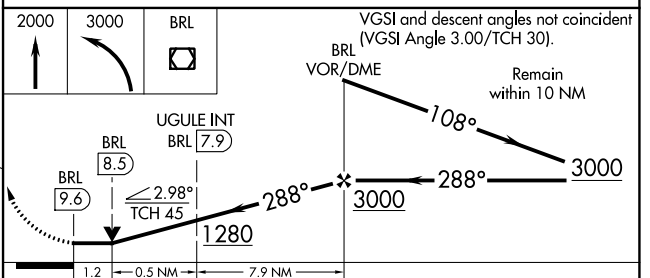
ELEV 698 **D** TDZE 697



MIRL Rwy 12-30 **0**
 HIRL Rwy 18-36 **0**
 REIL Rwys 12, 18 and 30 **0**

FAF to MAP 9.6 NM

Knots	60	90	120	150	180
Min:Sec	9:36	6:24	4:48	3:50	3:12



CATEGORY	A		B		C		D	
	S-30	1280-1	583 (600-1)	1280-1 3/4	583 (600-1 3/4)	1380-2	682 (700-2)	NA
C CIRCLING	1280-1	582 (600-1)	1380-2	682 (700-2)	NA	NA	NA	NA
UGULE FIX MINIMUMS								
S-30	1100-1	403 (500-1)	1100-1 1/8	403 (500-1 1/8)	1380-2	682 (700-2)	NA	NA
C CIRCLING	1180-1	482 (500-1)	1380-2	682 (700-2)	NA	NA	NA	NA

NC-3, 22 FEB 2024 to 21 MAR 2024

NC-3, 22 FEB 2024 to 21 MAR 2024