

WAAS CH 40127 W13A	APP CRS 131°	Rwy Idg 5107 TDZE 45 Apt Elev 45
--	------------------------	---

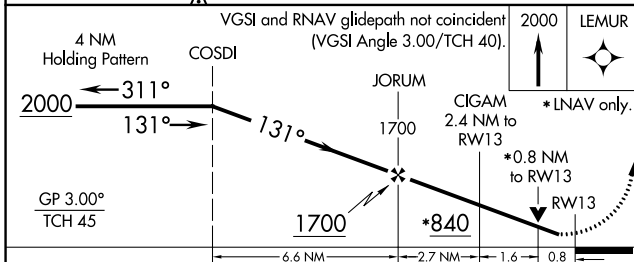
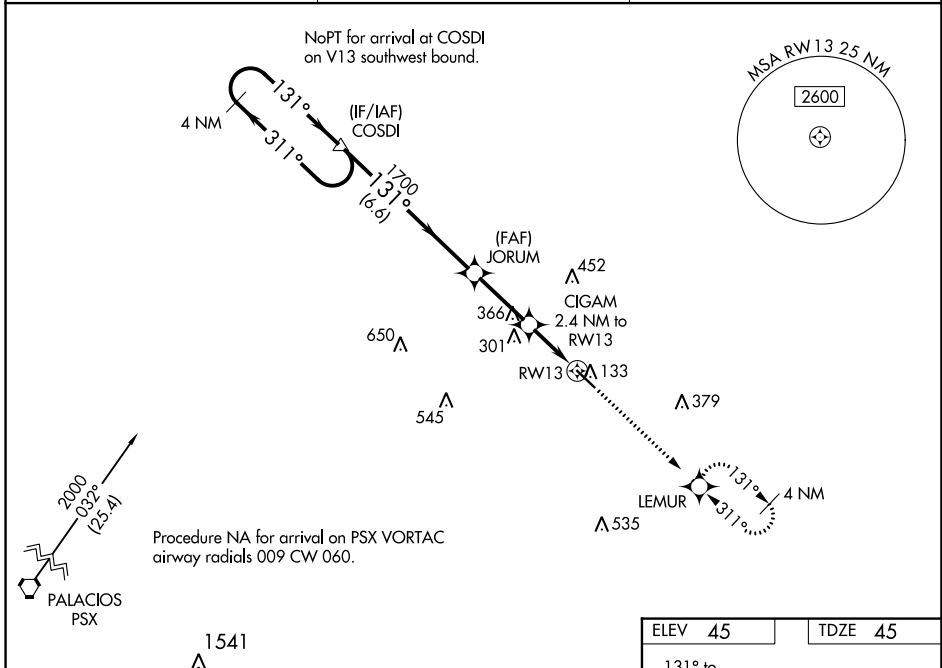
RNAV (GPS) RWY 13

BAY CITY RGNL (BYY)

⚠ For uncompensated Baro-VNAV systems, LNAV/VNAV NA below -15°C (5°F) or above 54°C (130°F).
⚠ Rwy 13, 31 helicopter visibility reduction below 1 SM NA. RADAR required. DME/DME RNP-0.3 NA.
 When local altimeter setting not received, use Palacios altimeter setting and increase all DA 63 feet and all MDA 80 feet; increase LNAV visibility Cat C ¼ mile. VDP and Baro-VNAV N/A when using Palacios altimeter setting.

MISSED APPROACH:
 Climb to 2000 direct LEMUR and hold.

AWOS-3 118.075	HOUSTON CENTER 128.6 360.8	UNICOM 122.8 (CTAF) ①
--------------------------	--------------------------------------	---------------------------------



ELEV 45	TDZE 45
---------	---------

REIL Rwy 13 ①
 REIL Rwy 31
 MIRL Rwy 13-31 ①

CATEGORY	A	B	C	D
LPV DA	295-1	250 (300-1)		NA
LNAV/VNAV DA	295-1	250 (300-1)		NA
LNAV MDA	460-1	415 (500-1)	460-1½ 415 (500-1½)	NA
C CIRCLING	500-1	455 (500-1)	620-1½ 575 (600-1½)	NA

SC-5, 22 FEB 2024 to 21 MAR 2024

SC-5, 22 FEB 2024 to 21 MAR 2024

WAAS CH 78326 W31A	APP CRS 311°	Rwy Idg 5107 TDZE 44 Apt Elev 45
--	------------------------	---

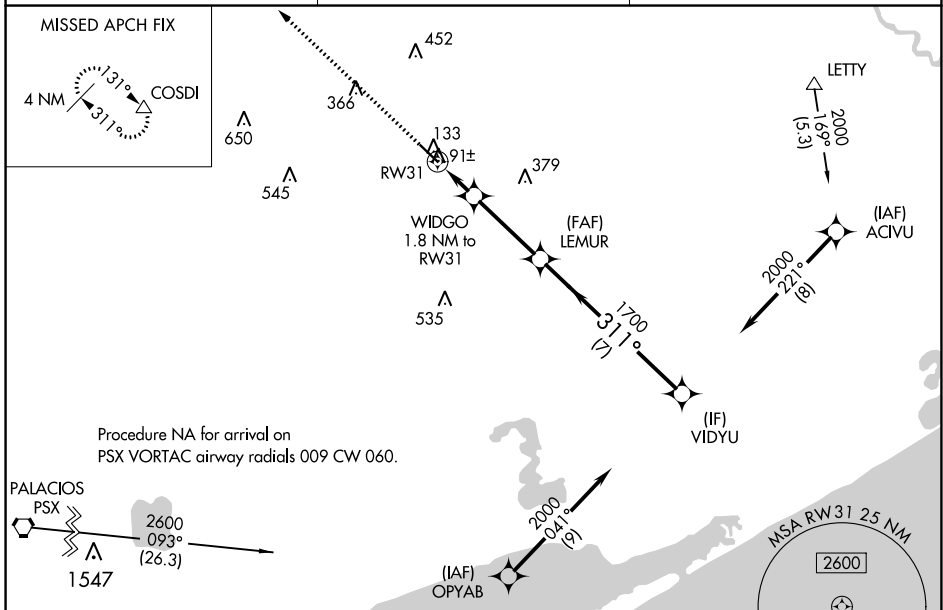
RNAV (GPS) RWY 31

BAY CITY RGNL (BYY)

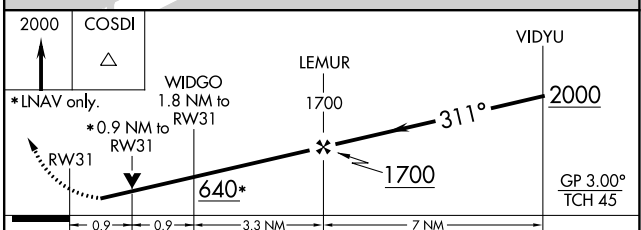
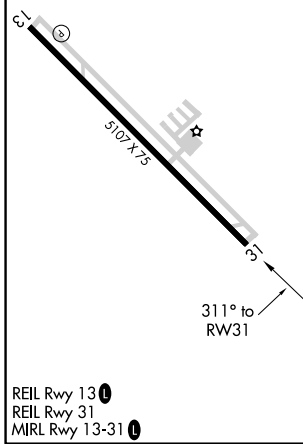
⚠ For uncompensated Baro-VNAV systems, LNAV/VNAV NA below -15°C (5°F) or above 54°C (130°F). Rwy 13, 31 helicopter visibility reduction below 1 SM NA. DME/DME RNP-0.3 NA. When local altimeter setting not received, use Palacios altimeter setting and increase all DA 63 feet and all MDA 80 feet; increase LNAV visibility Cat C ¼ mile. VDP and Baro-VNAV N/A when using Palacios altimeter setting.

MISSED APPROACH: Climb to 2000 direct COSDI and hold.

AWOS-3 118.075	HOUSTON CENTER 128.6 360.8	UNICOM 122.8 (CTAF) 0
--------------------------	--------------------------------------	---------------------------------



ELEV 45	TDZE 44
---------	---------



CATEGORY	A	B	C	D
LPV DA		294-1 250 (300-1)		NA
LNAV/VNAV DA		294-1 250 (300-1)		NA
LNAV MDA		360-1 316 (400-1)		NA
C CIRCLING	500-1	455 (500-1)	620-1½ 575 (600-1½)	NA

SC-5, 22 FEB 2024 to 21 MAR 2024

SC-5, 22 FEB 2024 to 21 MAR 2024

VORTAC PSX 117.3 Chan 120	APP CRS 054°	Rwy Idg TDZE Apt Elev	N/A N/A 45
---	------------------------	-----------------------------	---------------------------------------

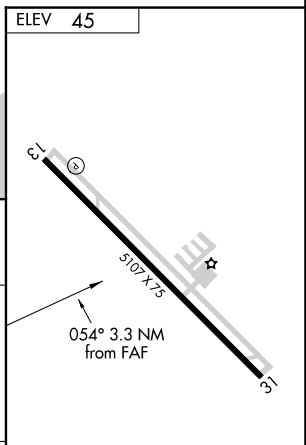
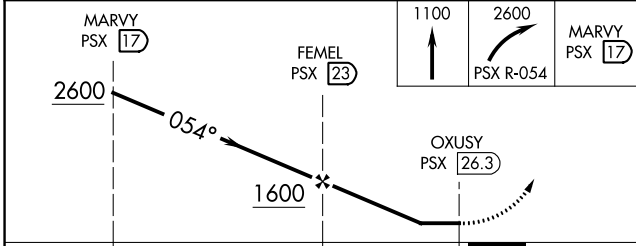
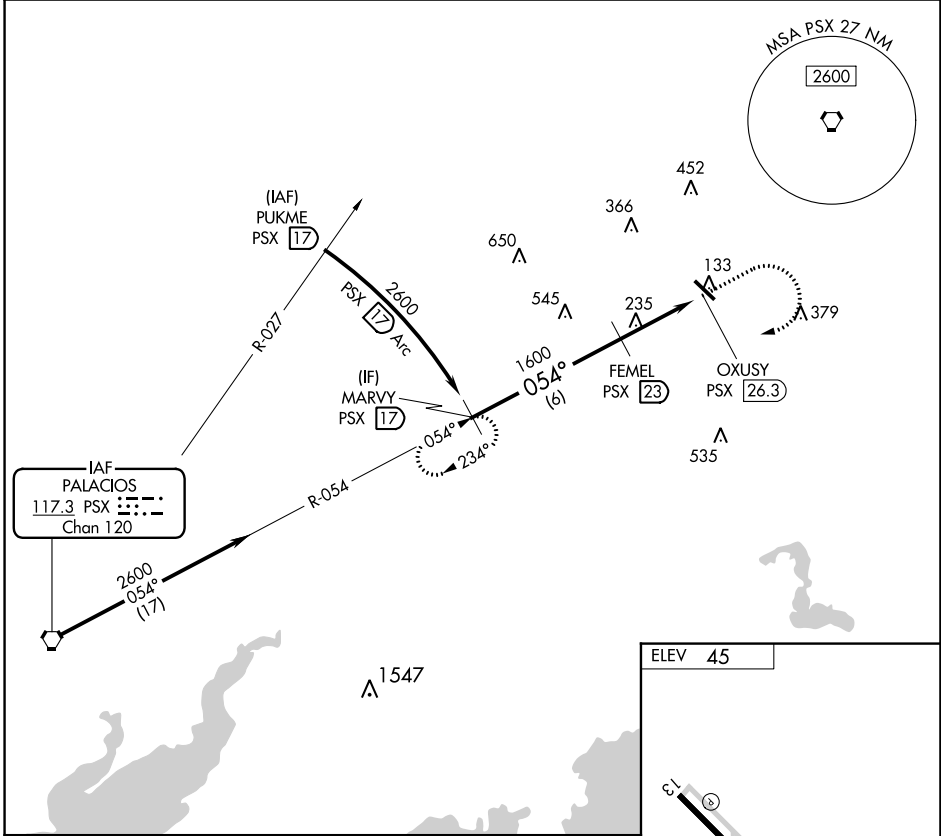
VOR-A

BAY CITY RGNL (BYT)

▼ Rwy 13, 31 helicopter visibility reduction below 1 SM NA.
▲ DME required. When local altimeter setting not received, use Palacios altimeter setting and increase all MDA 80 feet.

MISSED APPROACH: Climb to 1100 then climbing right turn to 2600 on PSX VORTAC R-054 to MARYV/17 DME and hold.

AWOS-3 118.075	HOUSTON CENTER 128.6 360.8	UNICOM 122.8 (CTAF) ①
--------------------------	--------------------------------------	--



CATEGORY	A	B	C	D
① CIRCLING	1080-1¼ 1035 (1100-1¼)	1080-1½ 1035 (1100-1½)	1080-3 1035 (1100-3)	NA

SC-5, 22 FEB 2024 to 21 MAR 2024

SC-5, 22 FEB 2024 to 21 MAR 2024