

BOBKT FOUR DEPARTURE (RNAV)  
 (BOBKT4.BOBKT) 24MAY18

BOZEMAN, MONTANA  
 BOZEMAN YELLOWSTONE INTL (BZN)

**TOP ALTITUDE:  
 16000**

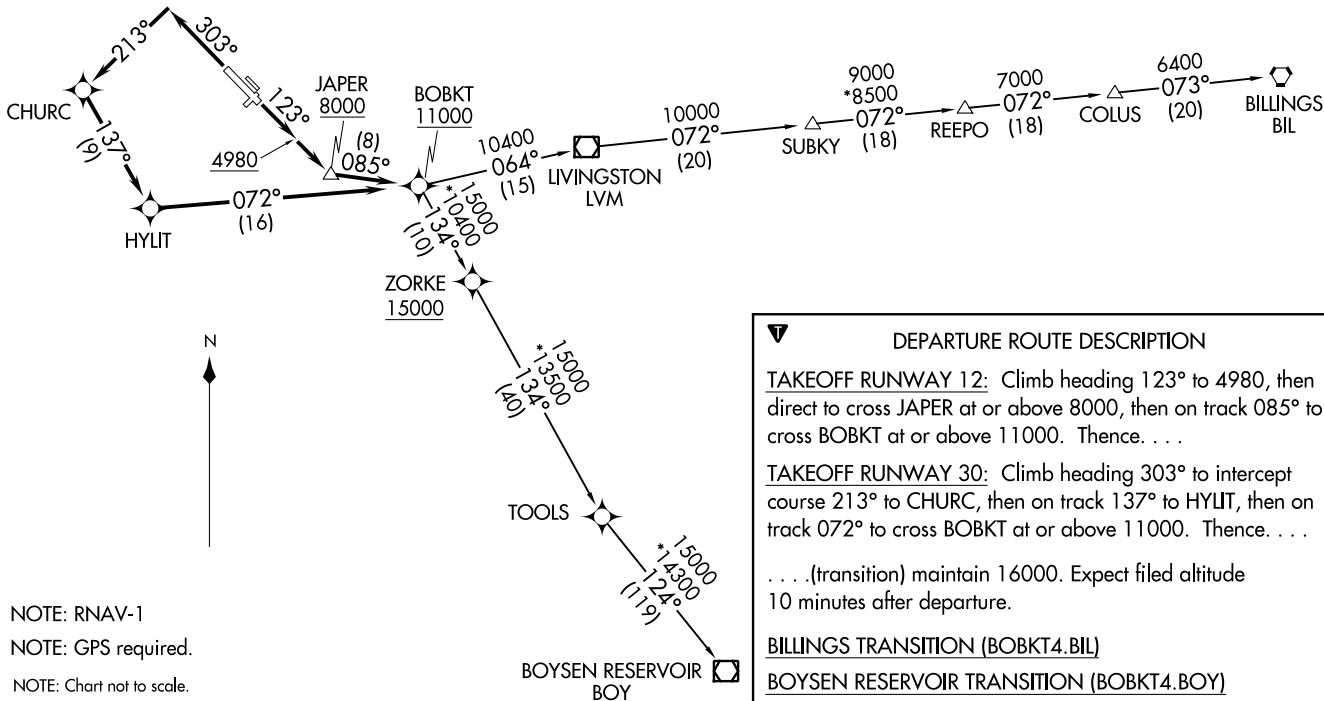
TAKEOFF MINIMUMS

Rwys 3, 11, 21, 29: NA - ATC.

Rwy 12: Standard with minimum climb of 395' per NM to 15000.

Rwy 30: Standard with minimum climb of 250' per NM to 15000.

BIG SKY DEP CON\*  
 118.975 226.675  
 ATIS  
 135.425  
 GND CON  
 121.8  
 BOZEMAN TOWER\*  
 118.2 (CTAF)



NOTE: RNAV-1  
 NOTE: GPS required.  
 NOTE: Chart not to scale.

**DEPARTURE ROUTE DESCRIPTION**

TAKEOFF RUNWAY 12: Climb heading 123° to 4980, then direct to cross JAPER at or above 8000, then on track 085° to cross BOBKT at or above 11000. Thence. . .

TAKEOFF RUNWAY 30: Climb heading 303° to intercept course 213° to CHURC, then on track 137° to HYLIT, then on track 072° to cross BOBKT at or above 11000. Thence. . .

. . . (transition) maintain 16000. Expect filed altitude 10 minutes after departure.

BILLINGS TRANSITION (BOBKT4.BIL)  
BOYSEN RESERVOIR TRANSITION (BOBKT4.BOY)

(BOBKT4.BOBKT) 23054  
 BOBKT FOUR DEPARTURE (RNAV)

AI-59 (FAA)

BOZEMAN, MONTANA  
 BOZEMAN YELLOWSTONE INTL (BZN)

(TEERX4.TEERX) 23054

# TEERX FOUR DEPARTURE (RNAV)

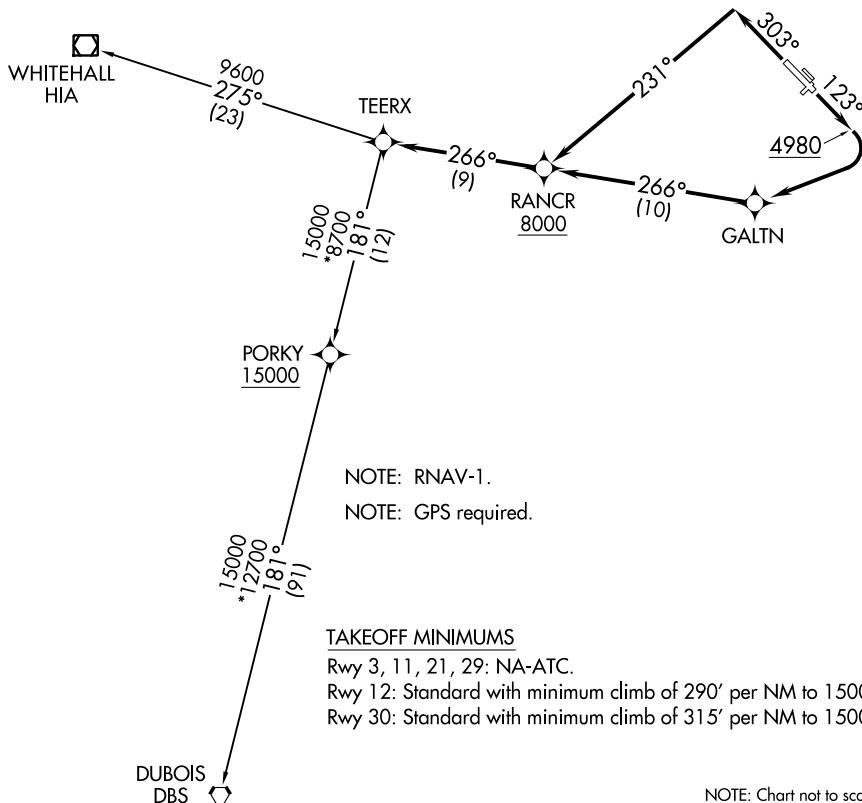
BOZEMAN YELLOWSTONE INTL (BZN)

AL-59 (FAA)

BOZEMAN, MONTANA

BIG SKY DEP CON ★  
118.975 226.675  
ATIS  
135.425  
GND CON  
121.8  
BOZEMAN TOWER ★  
118.2 (CTAF)

**TOP ALTITUDE:  
16000**



NW-1, 22 FEB 2024 to 21 MAR 2024

NW-1, 22 FEB 2024 to 21 MAR 2024



## DEPARTURE ROUTE DESCRIPTION

TAKEOFF RUNWAY 12: Climb heading 123° to 4980, then climbing right turn direct GALTN, then on track 266° to cross RANCR at or above 8000, then on track 266° to TEERX, thence. . . .

TAKEOFF RUNWAY 30: Climb heading 303° to intercept course 231° to cross RANCR at or above 8000, then on track 266° to TEERX, thence. . . .

. . . .(transition). Maintain 16000, expect filed altitude 10 minutes after departure.

DUBOIS TRANSITION (TEERX4.DBS)

WHITEHALL TRANSITION (TEERX4.HIA)

# TEERX FOUR DEPARTURE (RNAV)

(TEERX4.TEERX) 24MAY18

BOZEMAN, MONTANA  
BOZEMAN YELLOWSTONE INTL (BZN)

(HIA5.HIA) 23334

# WHITEHALL FIVE DEPARTURE

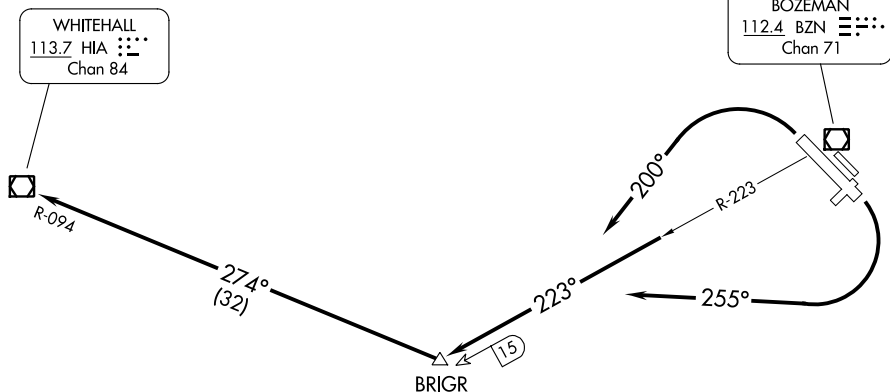
BOZEMAN YELLOWSTONE INTL (BZN)

AL-59 (FAA)

BOZEMAN, MONTANA

BIG SKY DEP CON ★  
118.975 226.675  
ATIS  
135.425  
GND CON  
121.8  
BOZEMAN TOWER ★  
118.2 (CTAF)

**TOP ALTITUDE:  
16000**



TAKEOFF MINIMUMS  
Rwys 3, 11, 21, 29: NA- ATC.  
Rwys 12, 30: Standard.

NOTE: Chart not to scale.

## DEPARTURE ROUTE DESCRIPTION

TAKEOFF RUNWAY 12: Climbing right turn heading 255° to intercept BZN R-223 to BRIGR, then continue climbing on HIA R-094 to HIA VOR/DME, cross HIA VOR/DME at or above MCA or MEA for route of flight.

TAKEOFF RUNWAY 30: Climbing left turn heading 200° to intercept BZN R-223 to BRIGR, then continue climbing on HIA R-094 to HIA VOR/DME, cross HIA VOR/DME at or above MCA or MEA for route of flight.

# WHITEHALL FIVE DEPARTURE

(HIA5.HIA) 24MAY18

BOZEMAN, MONTANA  
BOZEMAN YELLOWSTONE INTL (BZN)

NW-1, 22 FEB 2024 to 21 MAR 2024

NW-1, 22 FEB 2024 to 21 MAR 2024