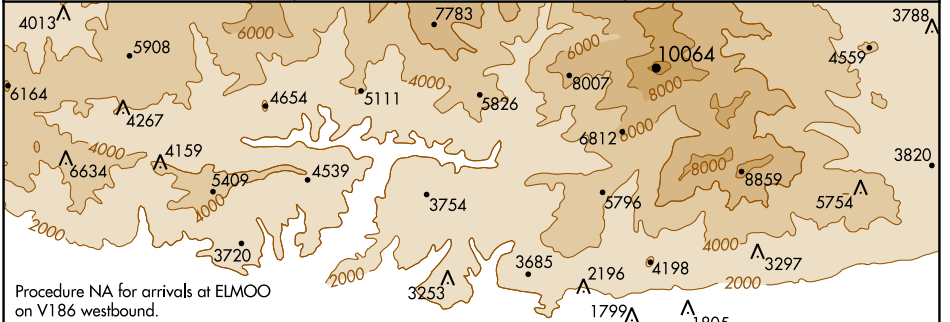


WAAS CH 45934 W06A	APP CRS 054°	Rwy Idg TDZE Apt Elev	3757 1430 1444
--	------------------------	-----------------------------	---

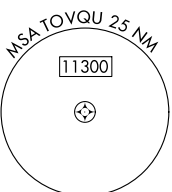
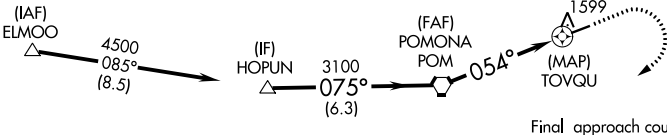
RNAV (GPS) RWY 6

CABLE (CCB)

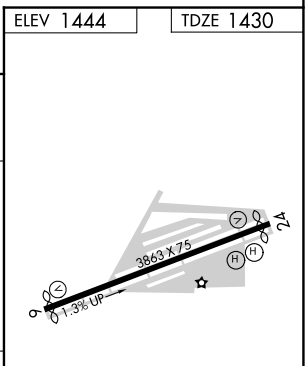
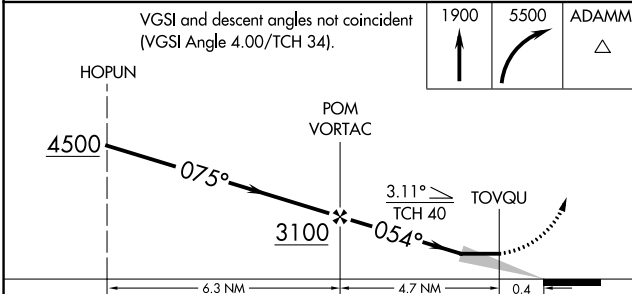
RNP APCH.		MISSED APPROACH: Climb to 1900 then climbing right turn to 5500 direct ADAMM and hold, continue climb-in-hold to 5500.
AWOS-3P 119.525	SOCAL APP CON 125.5 349.0	UNICOM 123.0 (CTAF) 1



Procedure NA for arrivals at ELMOO on V186 westbound.



ELEV 1444	TDZE 1430
-----------	-----------



CATEGORY	A	B	C	D
	LP MDA	1780-1 350 (400-1)	1780-1½ 350 (400-1½)	NA
LNNAV MDA	1940-1 510 (500-1)	1940-1½ 510 (500-1½)	NA	NA
CIRCLING	2020-1 576 (600-1)	2140-2 696 (700-2)	NA	NA

MIRL Rwy 6-24 **1**

SW-3, 09 SEP 2021 to 07 OCT 2021

SW-3, 09 SEP 2021 to 07 OCT 2021

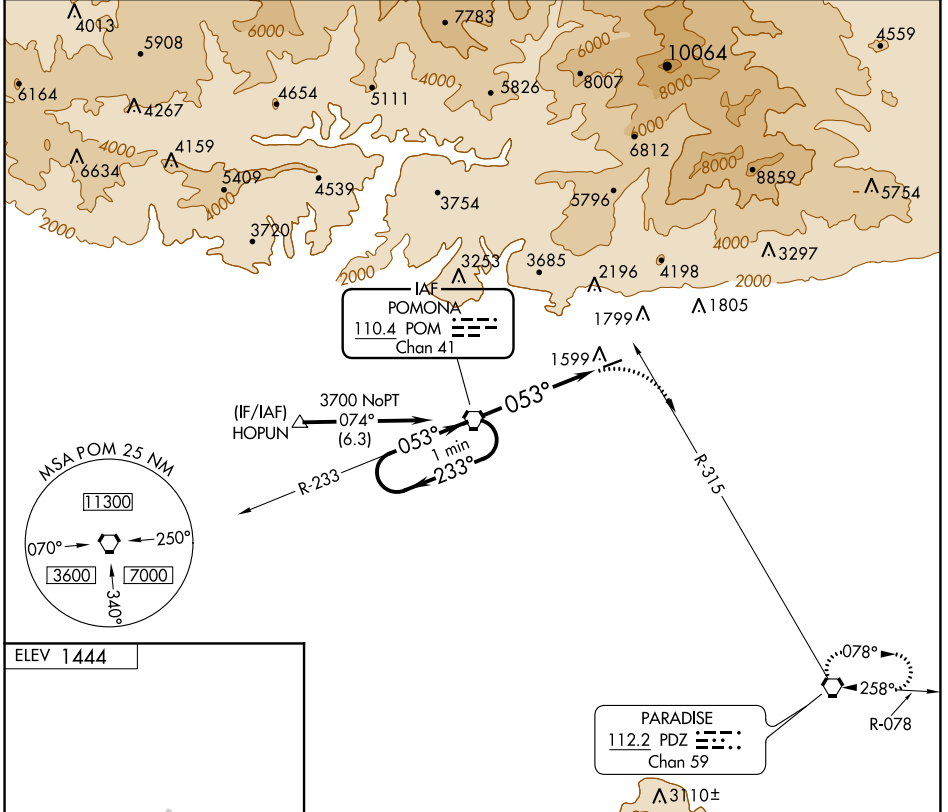
VORTAC POM 110.4 Chan 41	APP CRS 053°	Rwy Idg TDZE Apt Elev N/A N/A 1444
---------------------------------------	------------------------	--

VOR-A
CABLE (CCB)

NA Circling NA northwest of Rwy 6-24. Procedure NA at night.
When local altimeter setting not received, use Ontario altimeter setting and increase all MDA 100 feet and all visibilities ½ SM.
Rwy 24 helicopter visibility reduction below 1 SM NA.

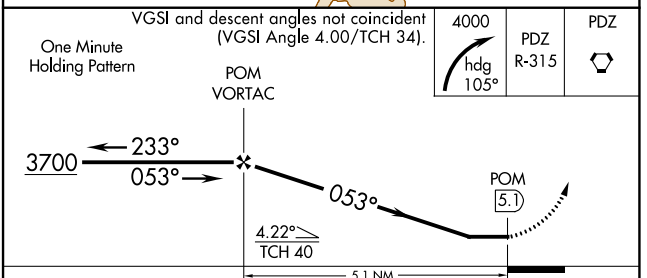
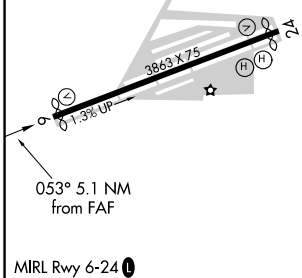
MISSED APPROACH: Climbing right turn to 4000 via heading 105° and PDZ R-315 to PDZ VORTAC and hold.

AWOS-3P 119.525	SOCAL APP CON 125.5 349.0	UNICOM 123.0 (CTAF) 0
---------------------------	-------------------------------------	---------------------------------



SW-3, 09 SEP 2021 to 07 OCT 2021

SW-3, 09 SEP 2021 to 07 OCT 2021



FAF to MAP 5.1 NM					
Knots	60	90	120	150	180
Min:Sec	5:06	3:24	2:33	2:02	1:42
CATEGORY	A	B	C	D	
CIRCLING	2240-1	796 (800-1)	2240-2¼ 796 (800-2¼)	NA	