

LOC I-CCO 110.75	APP CRS 322°	Rwy Idg TDZE Apt Elev	5500 952 970
----------------------------	------------------------	-----------------------------	---

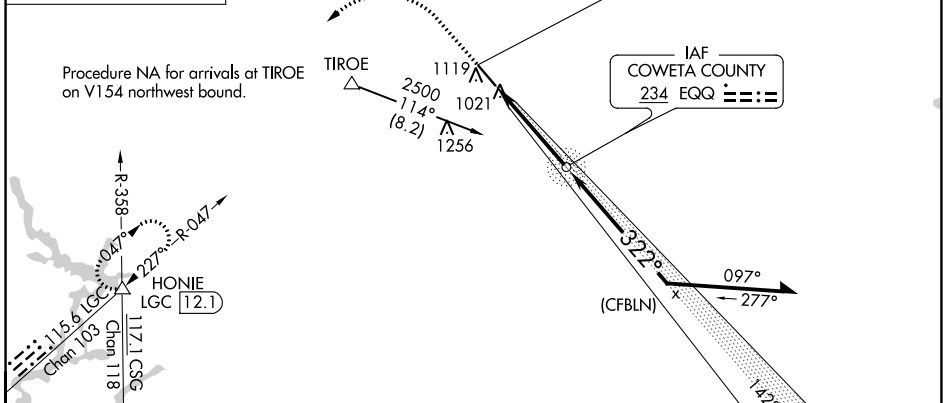
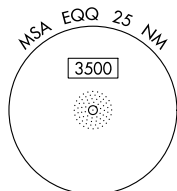
ILS or LOC RWY 33

NEWNAN COWETA COUNTY (CCO)

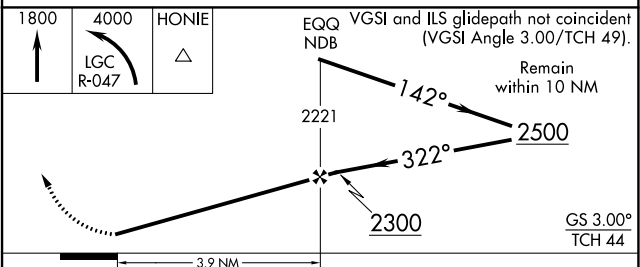
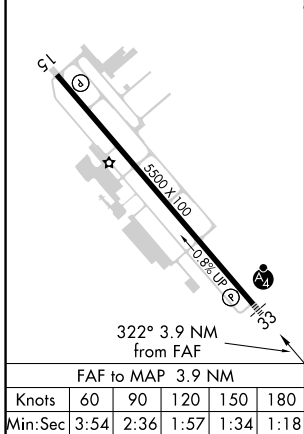
ADF required.	MALSF	MISSED APPROACH: Climb to 1800 then climbing left turn to 4000 on LGC VORTAC R-047 to HONIE INT/LGC 12.1 DME and hold.

AWOS-3PT 118.975	ATLANTA APP CON 119.8 354.125	GCO 121.725	UNICOM 122.7 (CTAF)
----------------------------	---	-----------------------	-------------------------------

ALTERNATE MISSED APCH FIX COWETA COUNTY 234 EQQ



ELEV 970	TDZE 952
HIRL Rwy 15-33	



CATEGORY	A	B	C	D
S-ILS 33	1202- ³ / ₄ 250 (300- ³ / ₄)			
S-LOC 33	1340- ³ / ₄	388 (400- ³ / ₄)	1340- ⁷ / ₈	388 (400- ⁷ / ₈)
CIRCLING	1420-1	450 (500-1)	1560-1 ¹ / ₂ 590 (600-1 ¹ / ₂)	1600-2 630 (700-2)

SE-4, 19 MAY 2022 to 16 JUN 2022

SE-4, 19 MAY 2022 to 16 JUN 2022

WAAS CH 70515 W15A	APP CRS 142°	Rwy Idg TDZE 970 Apt Elev 970	5500
--	------------------------	---	-------------

RNAV (GPS) RWY 15

NEWNAN COWETA COUNTY (CCO)

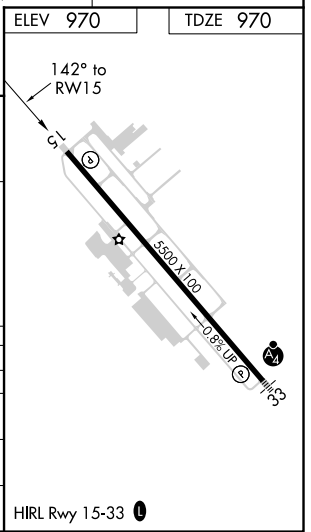
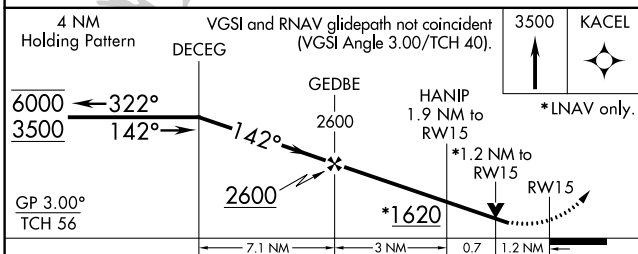
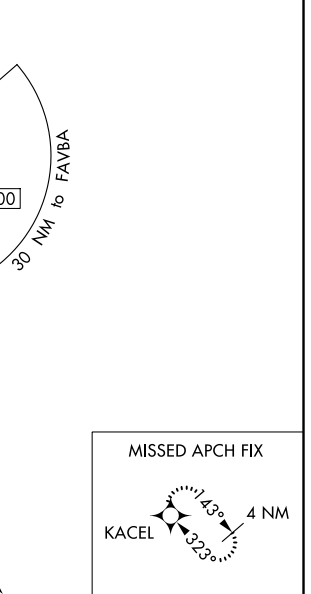
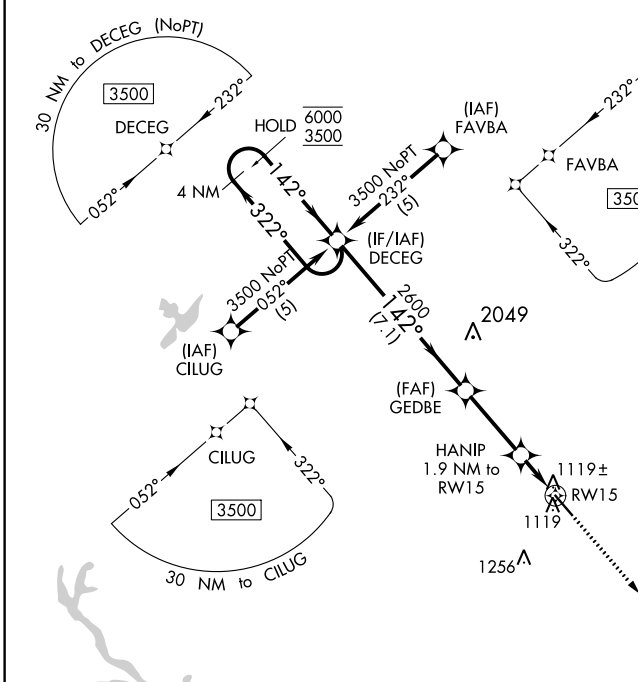
RNP APCH.

▼ Rwy 15 helicopter visibility reduction below 3/4 SM NA. For uncompensated Baro-VNAV systems, LNAV/VNAV NA below -16°C or above 47°C.

▲

MISSED APPROACH: Climb to 3500 direct KACEL and hold.

AWOS-3PT 118.975	ATLANTA APP CON 119.8 354.125	GCO 121.725	UNICOM 122.7 (CTAF) 0
----------------------------	---	-----------------------	---------------------------------



CATEGORY	A	B	C	D
LPV DA		1300-1	330 (400-1)	
LNAV/VNAV DA		1389-1½	419 (500-1½)	
LNAV MDA	1380-1	410 (500-1)	1380-1¼	410 (500-1¼)
CIRCLING	1420-1	450 (500-1)	1560-1½ 590 (600-1½)	1560-2 590 (600-2)

SE-4, 19 MAY 2022 to 16 JUN 2022

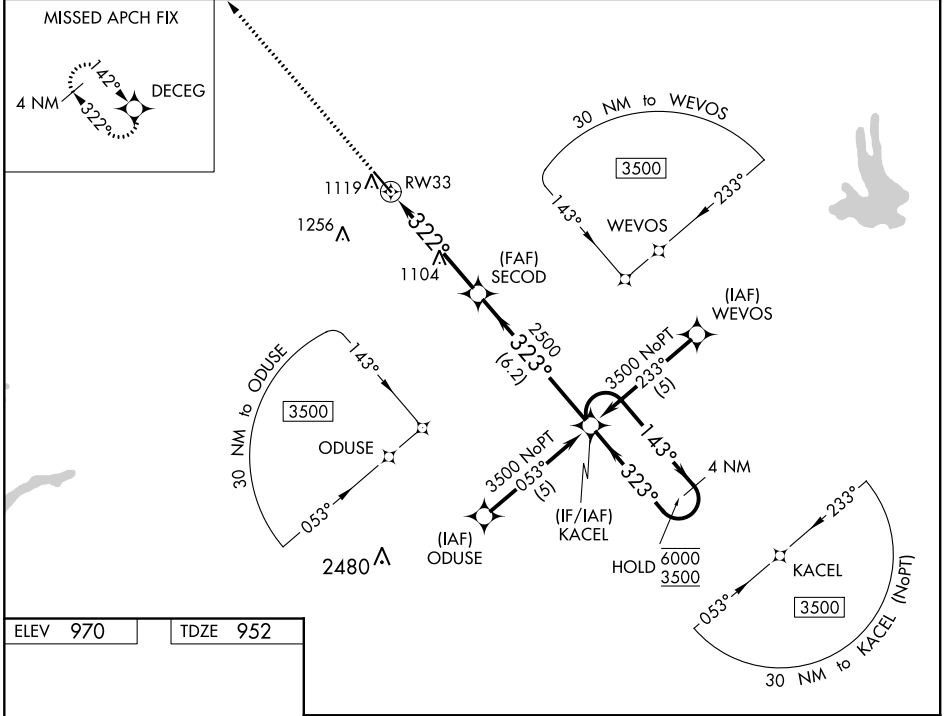
SE-4, 19 MAY 2022 to 16 JUN 2022

WAAS CH 77528 W33A	APP CRS 322°	Rwy Idg TDZE 5500 952 Apt Elev 970
--	------------------------	--

RNAV (GPS) RWY 33

NEWNAN COWETA COUNTY (CCO)

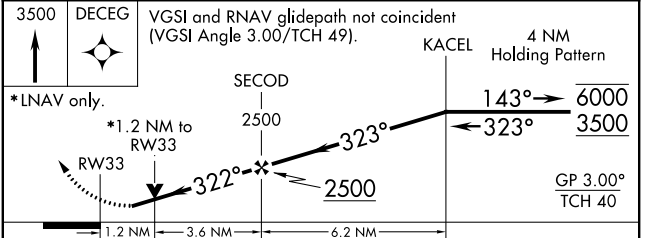
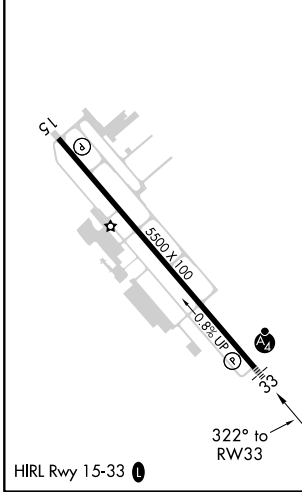
RNP APCH.		MISSED APPROACH: Climb to 3500 direct DECEG and hold.	
AWOS-3PT 118.975	ATLANTA APP CON 119.8 354.125	GCO 121.725	UNICOM 122.7 (CTAF) 0



SE-4, 19 MAY 2022 to 16 JUN 2022

SE-4, 19 MAY 2022 to 16 JUN 2022

ELEV 970	TDZE 952
----------	----------

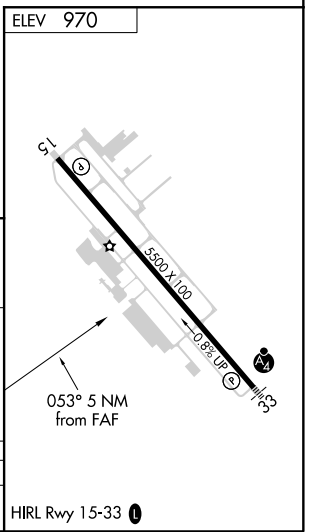
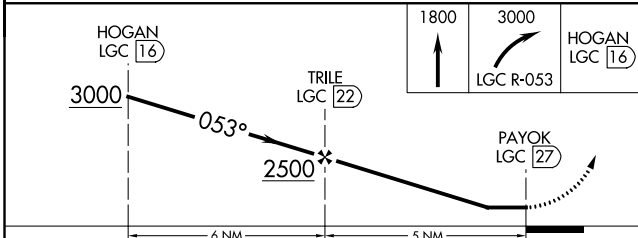
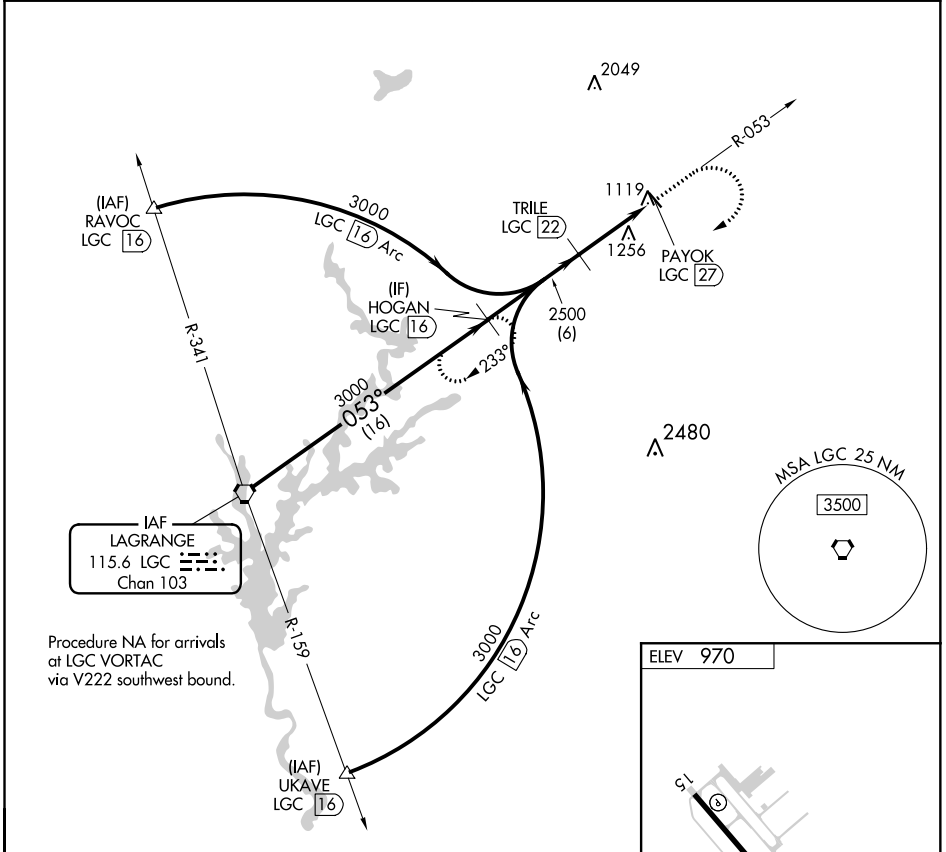


CATEGORY	A	B	C	D
LPV DA		1242-1	290 (300-1)	
RNAV/VNAV DA		1286-1	334 (400-1)	
RNAV MDA		1360-1	408 (400-1)	
<input checked="" type="checkbox"/> CIRCLING	1420-1	450 (500-1)	1560-1½ 590 (600-1½)	1560-2 590 (600-2)

VORTAC LGC 115.6 Chan 103	APP CRS 053°	Rwy Idg TDZE Apt Elev	N/A N/A 970
---	------------------------	-----------------------------	--

VOR-A
NEWNAN COWETA COUNTY (CCO)

DME required.		MISSED APPROACH: Climb to 1800 then climbing right turn to 3000 via LGC VORTAC R-053 to HOGAN/16 DME and hold.	
AWOS-3PT 118.975	ATLANTA APP CON 119.8 354.125	GCO 121.725	UNICOM 122.7 (CTAF) 0



CATEGORY	A	B	C	D
CIRCLING	1520-1 550 (600-1)	1520-1¼ 550 (600-1¼)	1560-1½ 590 (600-1½)	1560-2 590 (600-2)

SE-4, 19 MAY 2022 to 16 JUN 2022

SE-4, 19 MAY 2022 to 16 JUN 2022