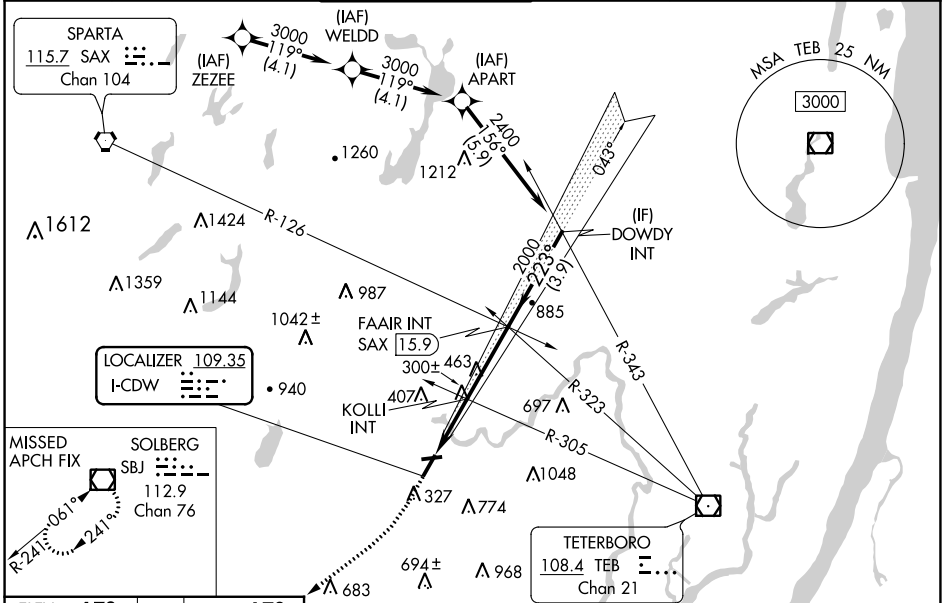


LOC I-CDW	APP CRS	Rwy Idg	4417
109.35	223°	TDZE	172
		Apt Elev	172

LOC RWY 22

ESSEX COUNTY (CDW)

Aircraft not GPS equipped - RADAR required for procedure entry.				MISSED APPROACH: Climb to 600 then climbing right turn to 2200 direct SBJ VOR/DME and hold.	
⚠ NA Rwy 22 helicopter visibility required below 1 SM NA. When local altimeter setting not received, use Newark altimeter setting and increase all MDA 60 feet and S-22 Cat A and Circling Cat C visibility ¼ SM. KOLLI INT minimums: increase all MDA 60 feet and increase S-22 Cats C/D and Circling Cats A and C visibility ¼ SM. Circling Rwy 10, 28 NA at night.					
ATIS	NEW YORK APP CON	CALDWELL TOWER ★	GND CON	CLNC DEL	UNICOM
135.5	127.6 379.9	119.8 (CTAF) 0	121.9	121.1	122.95



ELEV 172	TDZE 172	600	2200	SBJ	VGSI and descent angles not coincident (VGSI Angle 3.00/TCH 42).

REIL Rwy 22 1 MIRL Rwy 10-28 1 HIRL Rwy 4-22 1	FAF to MAP 5.4 NM				
Knots	60	90	120	150	180
Min:Sec	5:24	3:36	2:42	2:10	1:48

CATEGORY	A	B	C	D
S-LOC 22	1000-1 828 (900-1)	1000-1¼ 828 (900-1¼)	1000-2½ 828 (900-2½)	828 (900-2½)
C CIRCLING	1000-1¼ 828 (900-1¼)	1040-1¼ 868 (900-1¼)	1100-2¾ 928 (1000-2¾)	1400-3 1228 (1300-3)
KOLLI INT MINIMUMS				
S-LOC 22	560-1	388 (400-1)	560-1½	388 (400-1½)
C CIRCLING	960-1 788 (800-1)	1040-1¼ 868 (900-1¼)	1100-2¾ 928 (1000-2¾)	1400-3 1228 (1300-3)

NE-2, 22 FEB 2024 to 21 MAR 2024

NE-2, 22 FEB 2024 to 21 MAR 2024

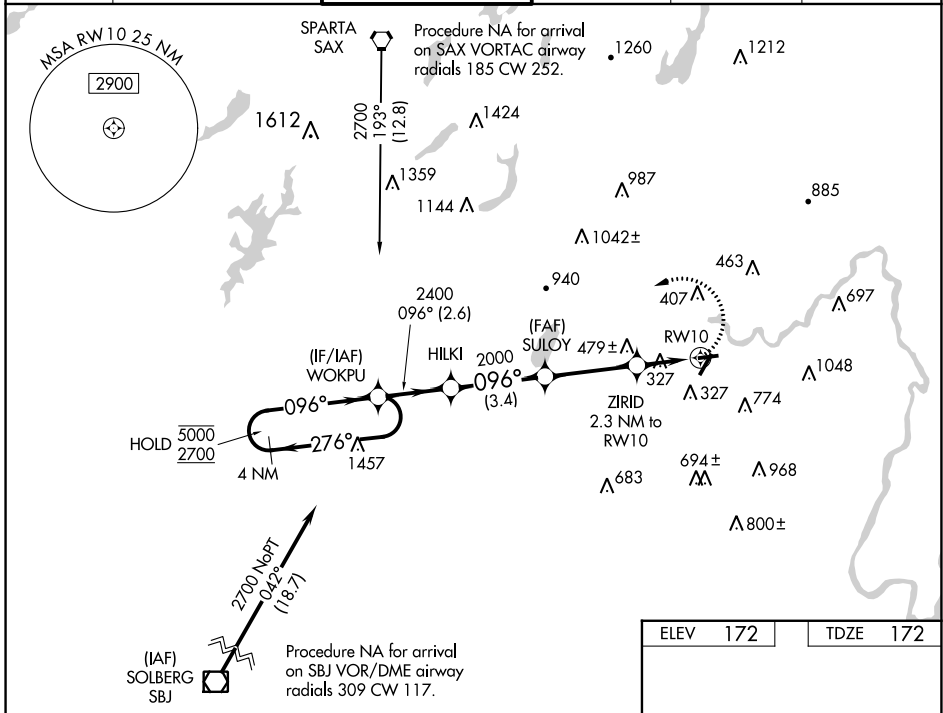
WAAS CH 81922 W10A	APP CRS 096°	Rwy Idg TDZE Apt Elev	3375 172 172
--	------------------------	-----------------------------	---

RNAV (GPS) RWY 10

ESSEX COUNTY (CDW)

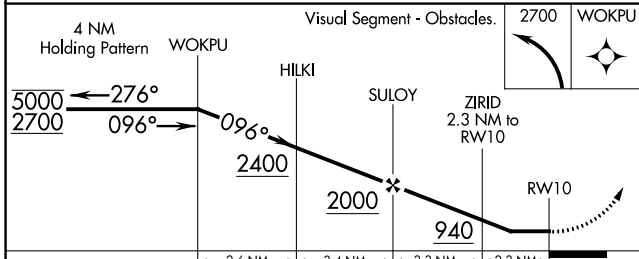
RNP APCH.		MISSED APPROACH: Climbing left turn to 2700 direct WOKPU and hold.			
▽	Procedure NA at night.				
▲	Rwy 10 helicopter visibility reduction below 1 SM NA.				

ATIS 135.5	NEW YORK APP CON 127.6 379.9	CALDWELL TOWER ★ 119.8 (CTAF) 0	GND CON 121.9	CLNC DEL 121.1	UNICOM 122.95
----------------------	--	---	-------------------------	--------------------------	-------------------------

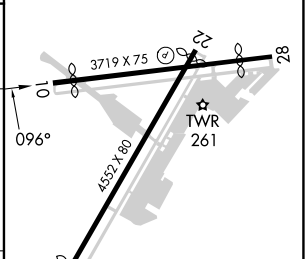


NE-2, 22 FEB 2024 to 21 MAR 2024

NE-2, 22 FEB 2024 to 21 MAR 2024



ELEV 172	TDZE 172
----------	----------



CATEGORY	A	B	C	D
LP MDA	600-1	428 (500-1)	600-1¼	428 (500-1¼)
LNAV MDA	740-1	568 (600-1)	740-1½	568 (600-1½)
☐ CIRCLING	960-1 788 (800-1)	1040-1¼ 868 (900-1¼)	1100-2¾ 928 (1000-2¾)	1400-3 1228 (1300-3)

- REIL Rwy 22 **0**
- MIRL Rwy 10-28 **0**
- HIRL Rwy 4-22 **0**

WAAS CH 58022 W22A	APP CRS 223°	Rwy Idg TDZE Apt Elev	4417 172 172
--	------------------------	-----------------------------	---

RNAV (GPS) RWY 22

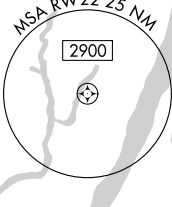
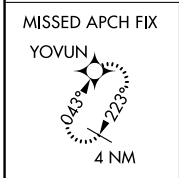
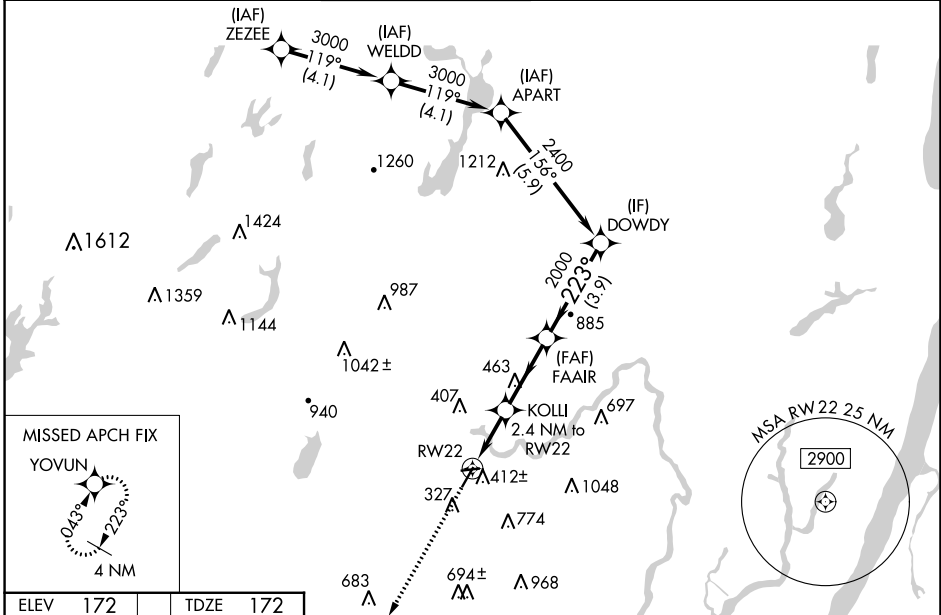
ESSEX COUNTY (CDW)

RNP APCH - GPS.

⚠ Rwy 22 helicopter visibility reduction below 1 SM NA.
 For uncompensated Baro-VNAV systems,
 LNAV/VNAV NA below -15°C or above 54°C.
 Circling Rwy 10, 28 NA at night. Circling NA E of Rwy 4-22.

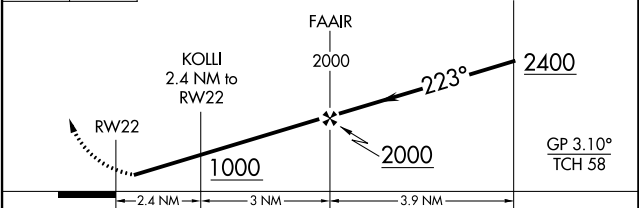
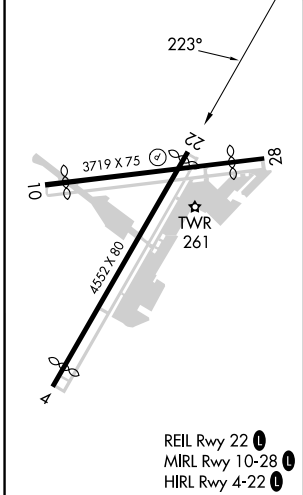
MISSED APPROACH:
 Climb to 2000 direct
 YOYUN and hold.

ATIS 135.5	NEW YORK APP CON 127.6 379.9	CALDWELL TOWER ★ 119.8 (CTAF) 0	GND CON 121.9	CLNC DEL 121.1	UNICOM 122.95
----------------------	--	--	-------------------------	--------------------------	-------------------------



ELEV 172	TDZE 172
----------	----------

2000 YOYUN **223°**
 VGS1 and descent angles not coincident
 (VGS1 Angle 3.00/TCH 42).



CATEGORY	A	B	C	D
LPV DA	459-1	287 (300-1)		NA
LNAV/VNAV DA	610-1 ³ / ₈	438 (500-1 ³ / ₈)		NA
LNAV MDA	680-1	508 (600-1)	680-1 ³ / ₈ 508 (600-1 ³ / ₈)	NA
C CIRCLING	960-1 788 (800-1)	1040-2 868 (900-2)	1100-2 ³ / ₄ 928 (1000-2 ³ / ₄)	NA

NE-2, 22 FEB 2024 to 21 MAR 2024

NE-2, 22 FEB 2024 to 21 MAR 2024

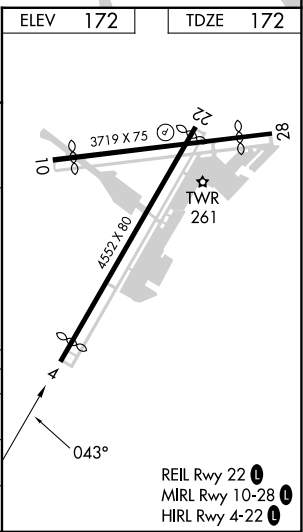
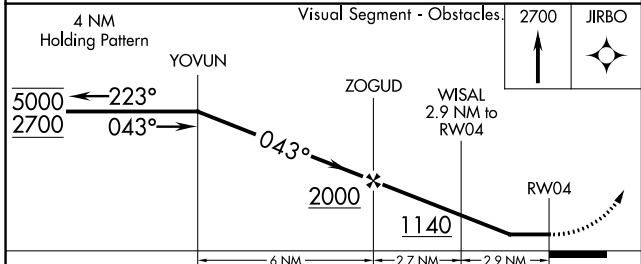
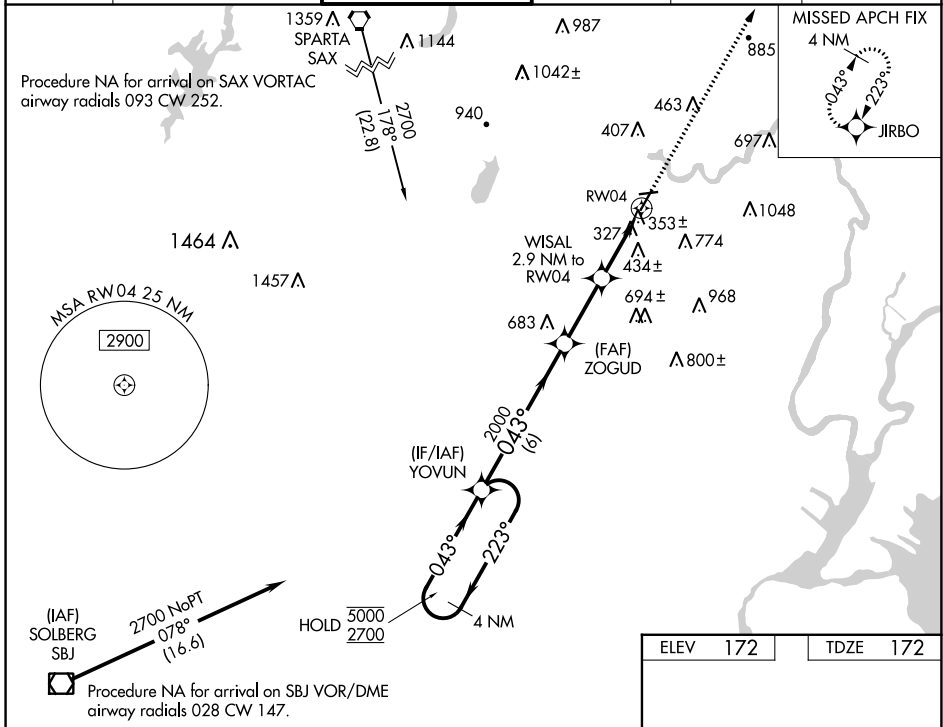
WAAS CH 42622 W04A	APP CRS 043°	Rwy Idg 4177 TDZE 172 Apt Elev 172
--	------------------------	---

RNAV (GPS) RWY 4

ESSEX COUNTY (CDW)

RNP APCH - GPS.		MISSED APPROACH: Climb to 2700 direct JIRBO and hold.			
Rwy 4 helicopter visibility reduction below 1 SM NA. Circling Rwy 10, 28 NA at night. Circling NA E of Rwy 4-22.					

ATIS 135.5	NEW YORK APP CON 127.6 379.9	CALDWELL TOWER ★ 119.8 (CTAF) 0	GND CON 121.9	CLNC DEL 121.1	UNICOM 122.95
----------------------	--	---	-------------------------	--------------------------	-------------------------



CATEGORY	A	B	C	D
LP MDA	620-1	448 (500-1)	620-1 3/8	448 (500-1 3/8)
LNAV MDA	660-1	488 (500-1)	660-1 3/8	488 (500-1 3/8)
CIRCLING	960-1 788 (800-1)	1040-1 1/4 868 (900-1 1/4)	1100-2 3/4 928 (1000-2 3/4)	1400-3 1228 (1300-3)

NE-2, 22 FEB 2024 to 21 MAR 2024

NE-2, 22 FEB 2024 to 21 MAR 2024