

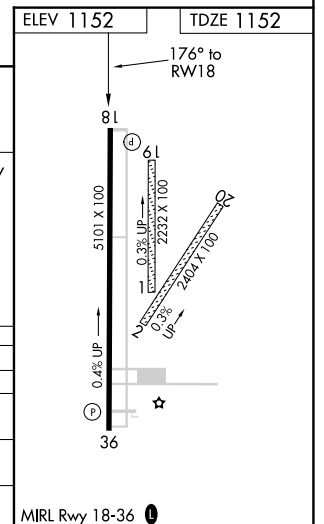
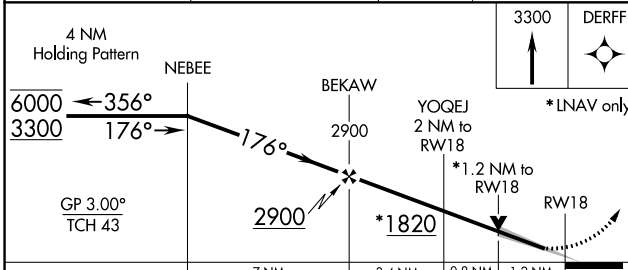
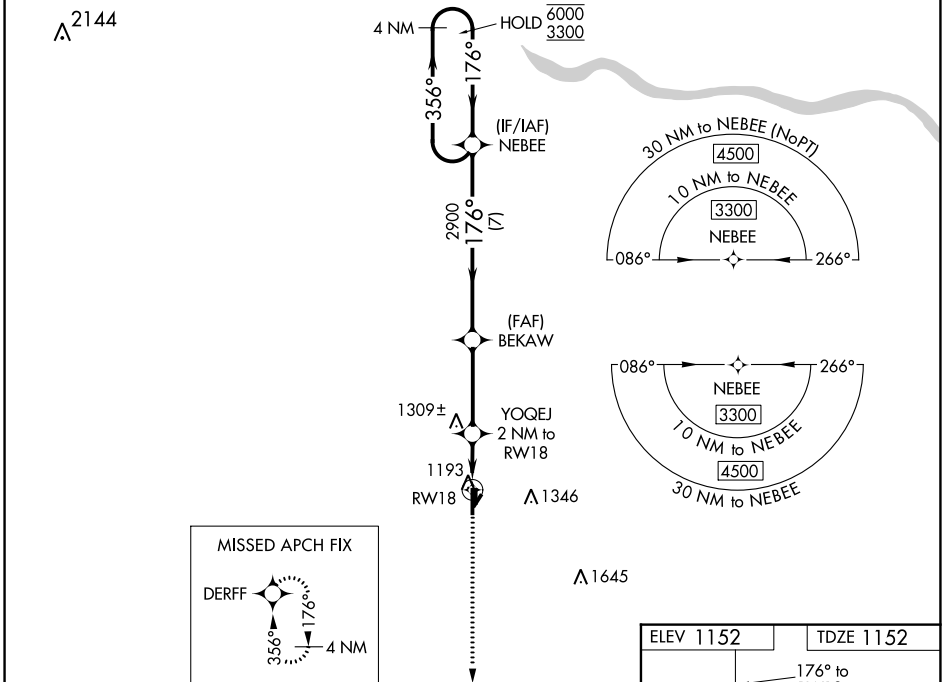
WAAS CH 70430 W18A	APP CRS 176°	Rwy Idg TDZE Apt Elev	5101 1152 1152
--	------------------------	-----------------------------	---

RNAV (GPS) RWY 18

CHICKASHA MUNI (CHK)

RNP APCH. ▼ Circling NA to Rwys 1, 2, 19 and 20. For uncompensated Baro-VNAV systems, LNAV/VNAV NA below -17°C or above 54°C.	MISSED APPROACH: Climb to 3300 direct DERFF and hold.
---	---

AWOS-3 118.175	OKE CITY APP CON 124.6 266.8	UNICOM 123.0 (CTAF) 0
--------------------------	--	---------------------------------



CATEGORY	A	B	C	D
LPV DA	1352-3/4	200 (200-3/4)		NA
LNAV/VNAV DA	1482-1 1/8	330 (400-1 1/8)		NA
LNAV MDA	1560-1	408 (500-1)	1560-1 1/8 408 (500-1 1/8)	NA
CIRCLING	1600-1 448 (500-1)	1620-1 468 (500-1)	1700-1 1/2 548 (600-1 1/2)	NA

SC-1, 04 NOV 2021 to 02 DEC 2021

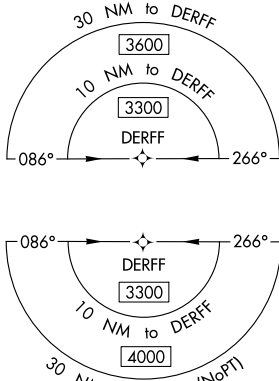
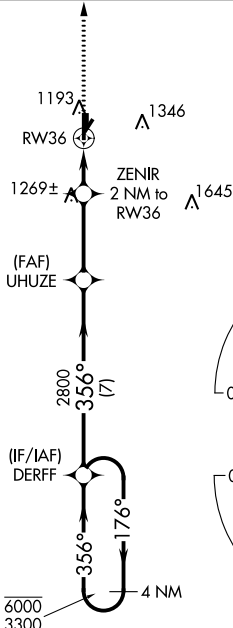
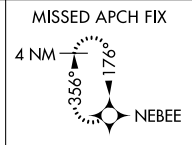
SC-1, 04 NOV 2021 to 02 DEC 2021

WAAS CH 48930 W36A	APP CRS 356°	Rwy Idg TDZE 1140 Apt Elev 1152	5101 1140 1152
--	------------------------	---	---

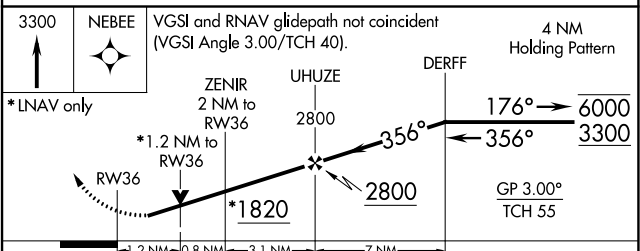
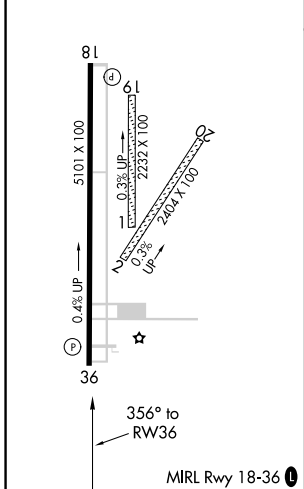
RNAV (GPS) RWY 36

CHICKASHA MUNI (CHK)

RNP APCH. ▼ Circling NA to Rwy 1, 2, 19 and 20. Rwy 36 helicopter visibility reduction below ¼ SM NA. For uncompensated Baro-VNAV systems, LNAV/VNAV NA below -17°C or above 54°C.	MISSED APPROACH: Climb to 3300 direct NEBEE and hold.	
AWOS-3 118.175	OKE CITY APP CON 124.6 266.8	UNICOM 123.0 (CTAF) 0



ELEV 1152	TDZE 1140
-----------	-----------



CATEGORY	A	B	C	D
LPV DA	1390-¾		250 (300-¾)	NA
LNAV/VNAV DA	1450-1		310 (300-1)	NA
LNAV MDA	1580-1	440 (500-1)	1580-1¼ 440 (500-1¼)	NA
CIRCLING	1600-1 448 (500-1)	1620-1 468 (500-1)	1700-1½ 548 (600-1½)	NA

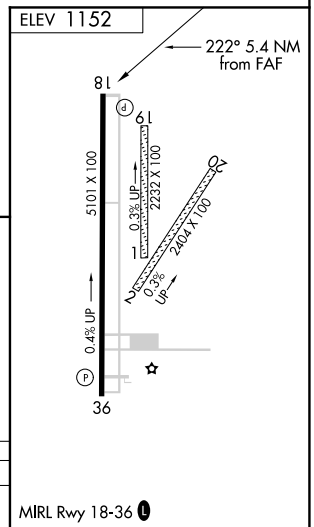
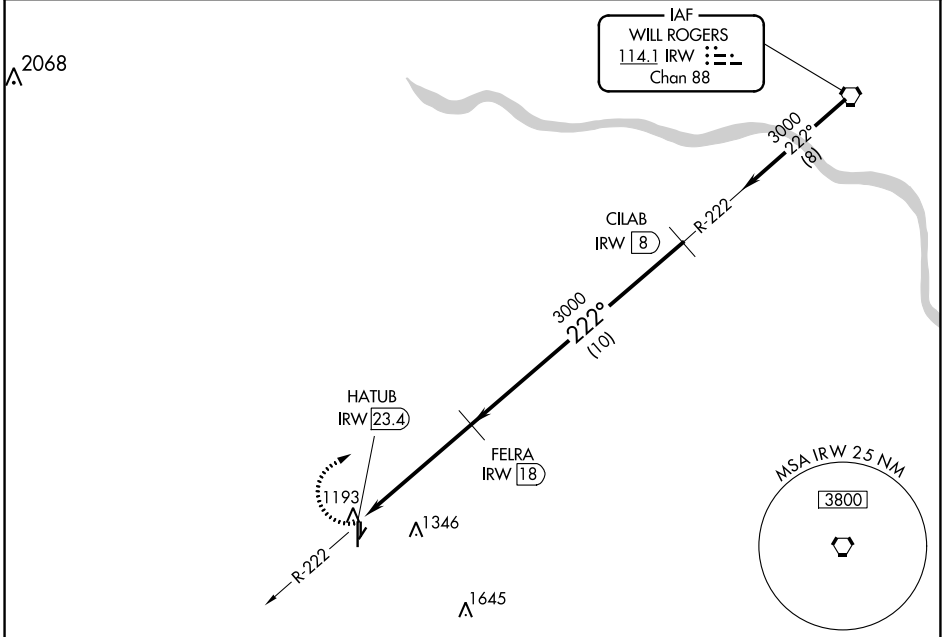
SC-1, 04 NOV 2021 to 02 DEC 2021

SC-1, 04 NOV 2021 to 02 DEC 2021

VORTAC IRW 114.1 Chan 88	APP CRS 222°	Rwy Idg TDZE Apt Elev	N/A N/A 1152
--	------------------------	-----------------------------	---

VOR/DME-A
CHICKASHA MUNI (CHK)

<p>▽ If local altimeter not received; use Oklahoma City/Will Rogers World altimeter setting and increase all MDAs 80 feet. Circling NA to Rwys 1, 2, 19 and 20.</p>	<p>△ NA MISSED APPROACH: Climbing right turn to 3000 direct IRW VORTAC.</p>	
<p>AWOS-3 118.175</p>	<p>OKE CITY APP CON 124.6 266.8</p>	<p>UNICOM 123.0 (CTAF) 0</p>



<p>3000 IRW</p> <p>HATUB IRW 23.4</p> <p>FELRA IRW 18</p> <p>CILAB IRW 8</p> <p>3000</p> <p>Procedure Turn NA</p>	5.4 NM		10 NM		
	<p>CATEGORY</p>	A	B	C	D
<p>C CIRCLING</p>	<p>1660-1 508 (600-1)</p>	<p>1660-1¼ 508 (600-1¼)</p>	<p>1700-1½ 548 (600-1½)</p>	<p>NA</p>	

SC-1, 04 NOV 2021 to 02 DEC 2021

SC-1, 04 NOV 2021 to 02 DEC 2021