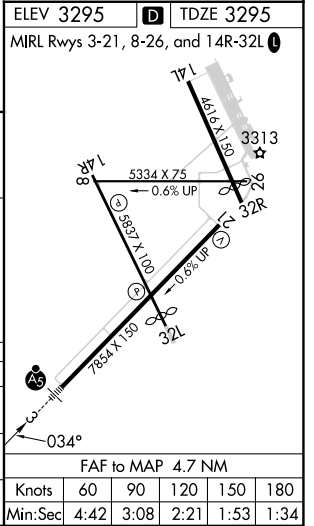
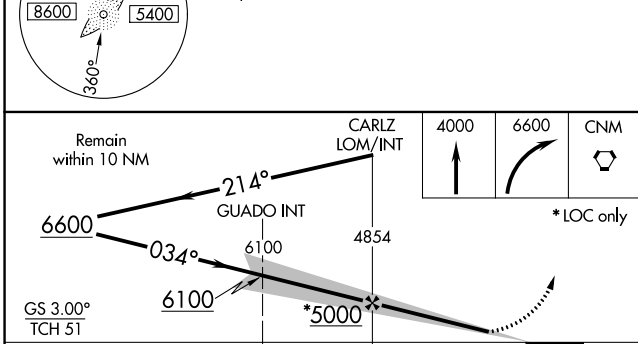
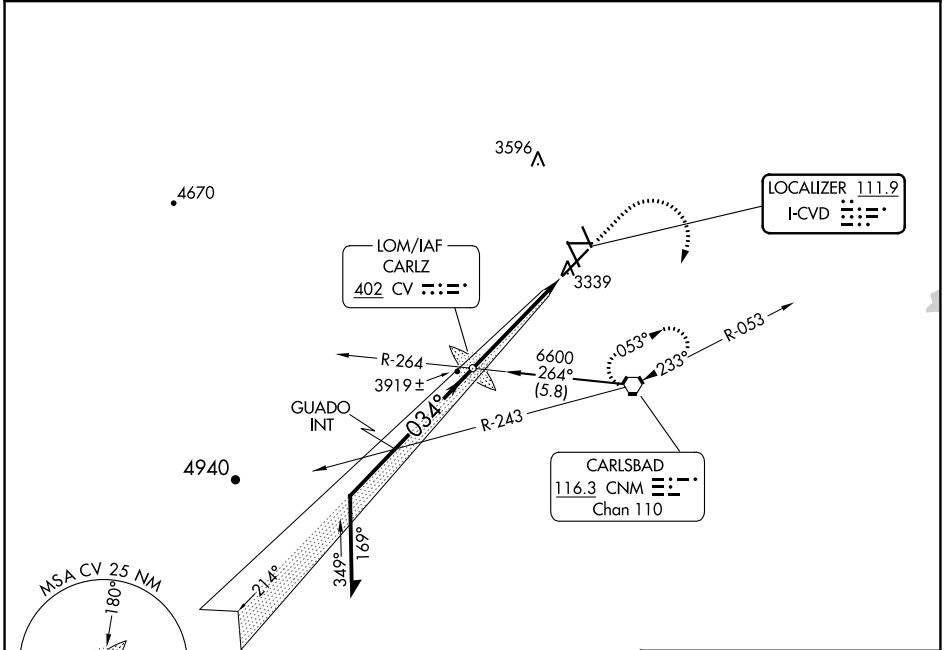


LOC I-CVD 111.9	APP CRS 034°	Rwy Idg TDZE Apt Elev	7504 3295 3295
---------------------------	------------------------	-----------------------------	---

ILS RWY 3
CAVERN CITY AIR TRML (CNM)

	MALSR	MISSED APPROACH: Climb to 4000 then climbing right turn to 6600 direct CNM VORTAC and hold.

ASOS 118.375	ALBUQUERQUE CENTER 135.875 292.15	UNICOM 123.0 (CTAF) 0
------------------------	---	---------------------------------



CATEGORY	A	B	C	D
S-ILS 3	3495-½		200 (200-½)	
S-LOC 3	3940-½	645 (700-½)	3940-1¼ 645 (700-1¼)	3940-1½ 645 (700-1½)
CIRCLING	3940-1	645 (700-1)	3960-1⅜ 665 (700-1⅜)	4260-3 965 (1000-3)

SW-1, 22 FEB 2024 to 21 MAR 2024

SW-1, 22 FEB 2024 to 21 MAR 2024

WAAS CH 61034 W14A	APP CRS 144°	Rwy Idg TDZE Apt Elev	5837 3270 3295
--	------------------------	-----------------------------	---

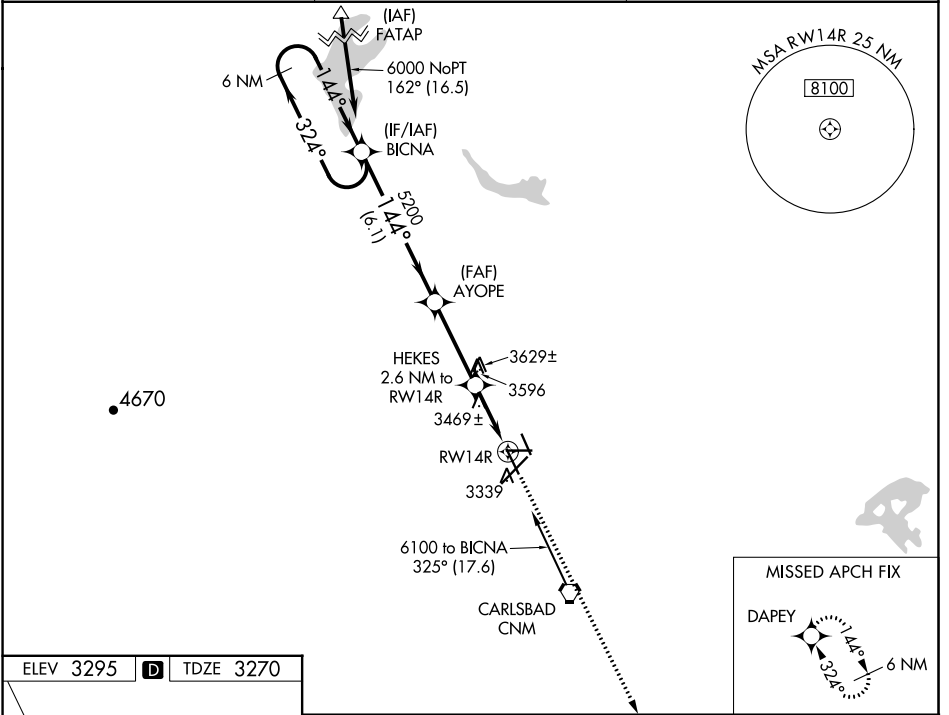
RNAV (GPS) RWY 14R

CAVERN CITY AIR TRML (CNM)

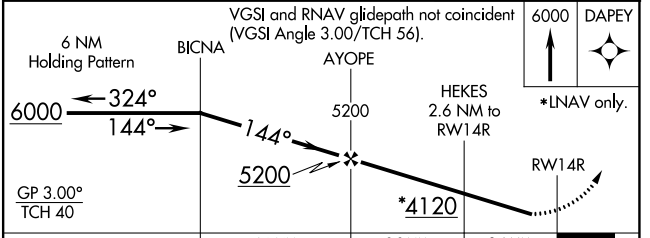
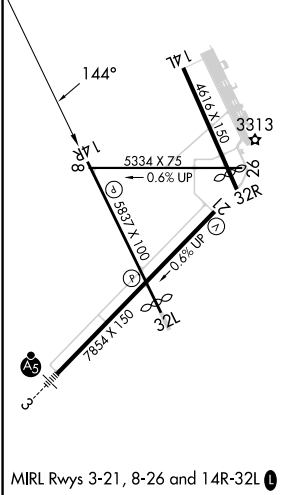
⚠ For uncompensated Baro-VNAV systems, LNAV/VNAV NA below -10°C (14°F) or above 54°C (130°F). DME/DME RNP-0.3 NA. Helicopter visibility reduction below 1 SM NA.

⚠ MISSED APPROACH: Climb to 6000 direct DAPEY and hold.

ASOS 118.375	ALBUQUERQUE CENTER 135.875 292.15	UNICOM 123.0 (CTAF) 0
------------------------	---	---------------------------------



ELEV 3295 **D** TDZE 3270



CATEGORY	A	B	C	D
LPV DA		3520-1	250 (300-1)	
LNAV/VNAV DA		3520-1	250 (300-1)	
LNAV MDA	3720-1	450 (500-1)	3720-1 ³ / ₈	450 (500-1 ³ / ₈)
C CIRCLING	3720-1 425 (500-1)	3780-1 485 (500-1)	3960-1 ³ / ₄ 665 (700-1 ³ / ₄)	4260-3 965 (1000-3)

WAAS CH 90234 W21A	APP CRS 214°	Rwy ldg TDZE Apt Elev	7854 3264 3295
--	------------------------	-----------------------------	---

RNAV (GPS) RWY 21

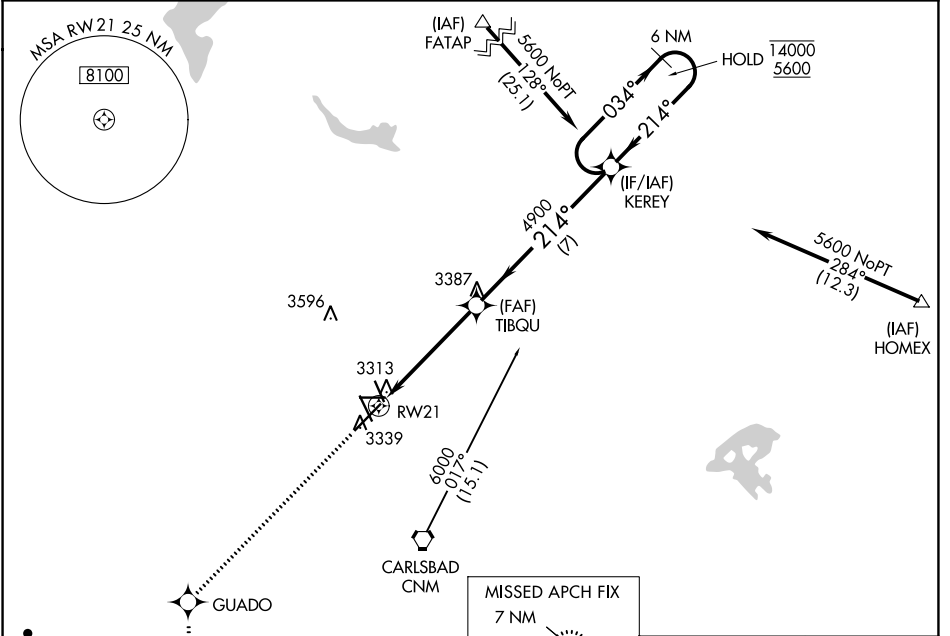
CAVERN CITY AIR TRML (CNM)

RNP APCH - GPS.

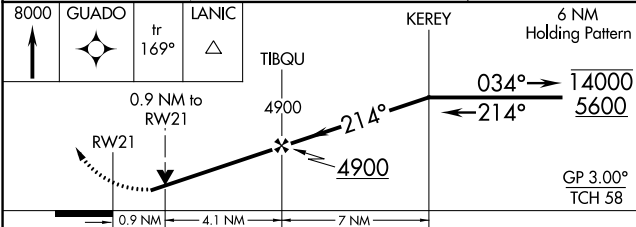
⚠ Rwy 21 helicopter visibility reduction below 3/4 SM NA. For uncompensated Baro-VNAV systems, LNAV/VNAV NA below -10°C or above 50°C.

MISSED APPROACH: Climb to 8000 direct GUADO and on track 169° to LANIC and hold, continue climb-in-hold to 8000.

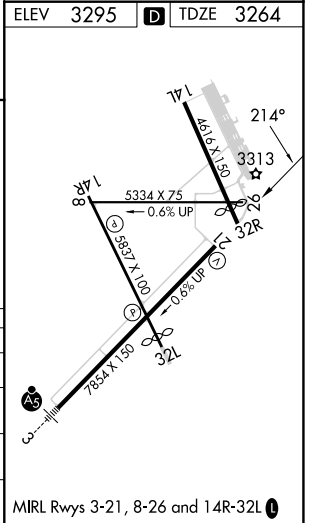
ASOS 118.375	ALBUQUERQUE CENTER 135.875 292.15	UNICOM 123.0 (CTAF)
------------------------	---	-------------------------------



ELEV 3295	D TDZE 3264
-----------	--------------------



CATEGORY	A	B	C	D
LPV DA		3514-3/4	250 (300-3/4)	
LNAV/VNAV DA		3514-3/4	250 (300-3/4)	
LNAV MDA	3580-1	316 (300-1)	3580-7/8	316 (300-7/8)
C CIRCLING	3700-1 405 (500-1)	3780-1 485 (500-1)	3960-1 3/4 665 (700-1 3/4)	4260-3 965 (1000-3)



SW-1, 22 FEB 2024 to 21 MAR 2024

SW-1, 22 FEB 2024 to 21 MAR 2024

WAAS CH 81835 W03A	APP CRS 034°	Rwy Idg TDZE Apt Elev	7504 3295 3295
--	------------------------	-----------------------------	---

RNAV (GPS) RWY 3

CAVERN CITY AIR TRML (CNM)

⚠ For uncompensated Baro-VNAV systems, LNAV/VNAV NA below -10°C (14°F) or above 52°C (126°F). DME/DME RNP-0.3 NA. For inop MALS, increase LNAV Cat C/D visibility to 2½ miles, and increase LNAV/VNAV all Cats visibility to ¾ mile.

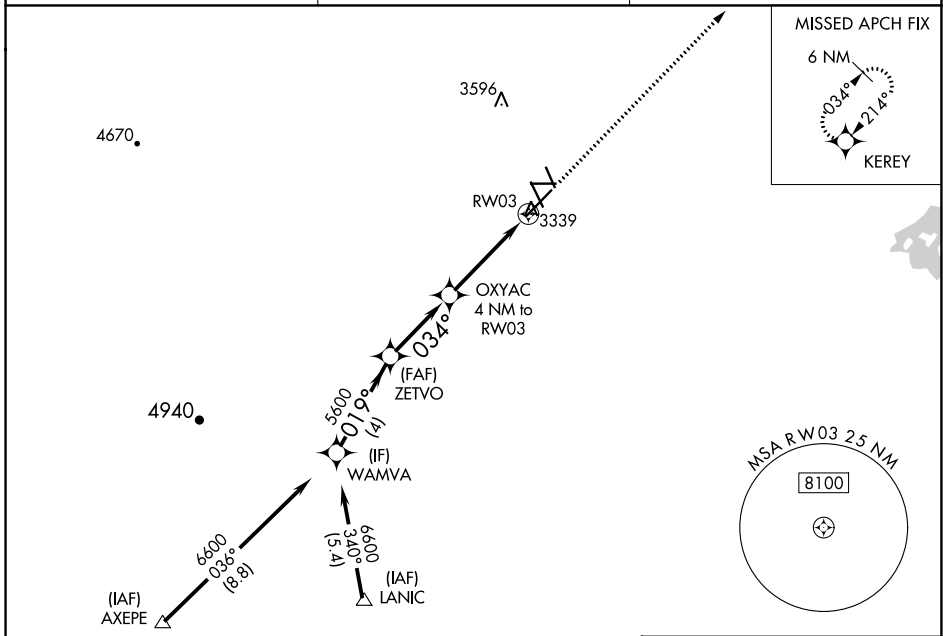


MISSED APPROACH: Climb to 5600 direct KEREY and hold.

ASOS
118.375

ALBUQUERQUE CENTER
135.875 292.15

UNICOM
123.0 (CTAF) 0



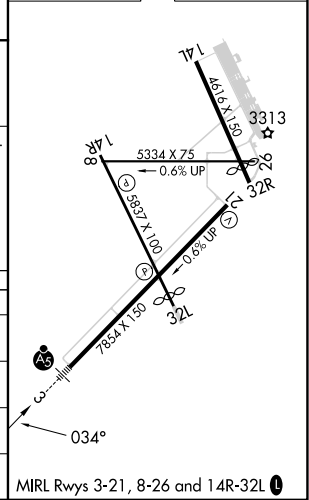
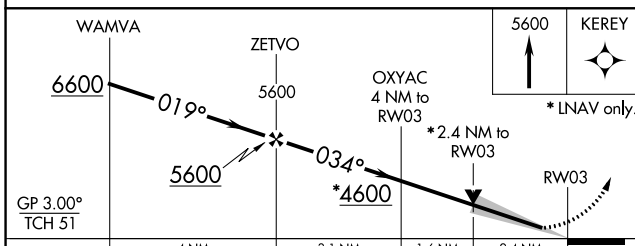
SW-1, 22 FEB 2024 to 21 MAR 2024

SW-1, 22 FEB 2024 to 21 MAR 2024

Procedure NA for arrivals at AXEPE on V102 southwest bound.

Procedure NA for arrivals at LANIC on V560 southwest bound.

ELEV 3295 **D** TDZE 3295



CATEGORY	A	B	C	D
LPV DA		3495-½	200 (200-½)	
LNAV/VNAV DA		3545-½	250 (300-½)	
LNAV MDA	4100-½ 805 (900-½)	4100-¾ 805 (900-¾)	4100-1⅞	805 (900-1⅞)
C CIRCLING	4100-1 805 (900-1)	4100-1¼ 805 (900-1¼)	4100-2½ 805 (900-2½)	4260-3 965 (1000-3)

VORTAC CNM 116.3 Chan 110	APP CRS 325°	Rwy Idg TDZE Apt Elev 5452 3268 3295
--	------------------------	--

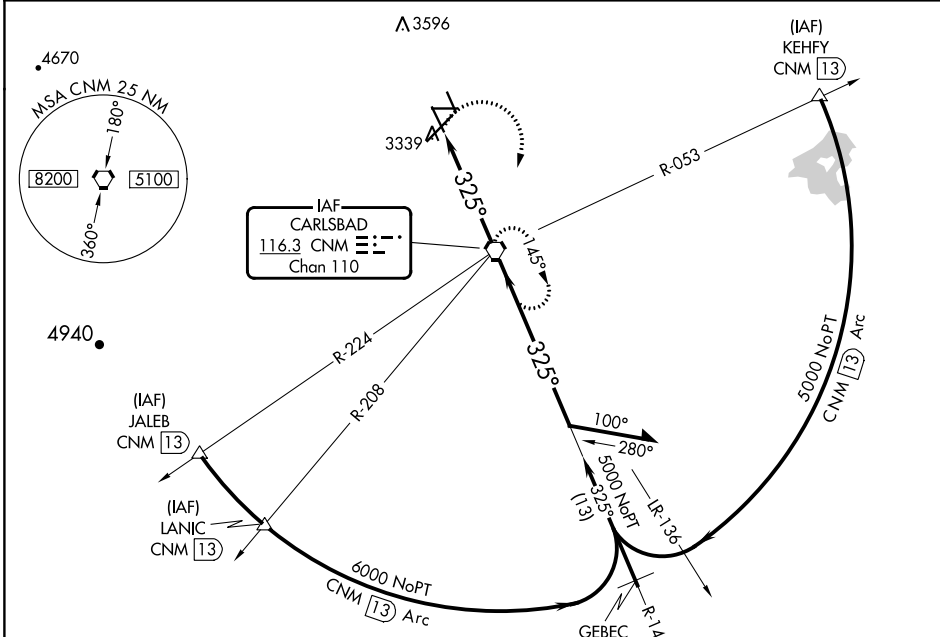
VOR RWY 32L

CAVERN CITY AIR TRML (CNM)

▼ When local altimeter setting not received, use Artesia Muni altimeter setting and increase all MDA 120 feet and S-32L Cats C/D visibility to 1/2, Circling Cat C visibility to 2/4.

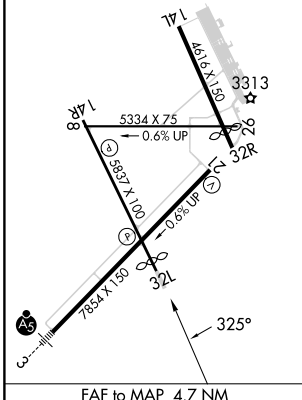
▲ MISSED APPROACH: Climbing right turn to 5000 direct CNM VORTAC and hold.

ASOS 118.375	ALBUQUERQUE CENTER 135.875 292.15	UNICOM 123.0 (CTAF) 11
------------------------	---	---

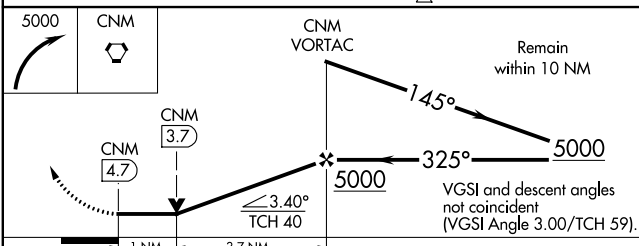


ELEV 3295	D TDZE 3268
-----------	--------------------

MIRL Rwys 3-21, 8-26 and 14R-32L **11**



FAF to MAP 4.7 NM					
Knots	60	90	120	150	180
Min:Sec	4:42	3:08	2:21	1:53	1:34



CATEGORY	A	B	C	D
S-32L	3680-1	412 (400-1)	3680-1 1/4	412 (400-1 1/4)
C CIRCLING	3700-1 405 (500-1)	3780-1 485 (500-1)	3960-1 1/4 665 (700-1 1/4)	4260-3 965 (1000-3)

SW-1, 22 FEB 2024 to 21 MAR 2024

SW-1, 22 FEB 2024 to 21 MAR 2024