

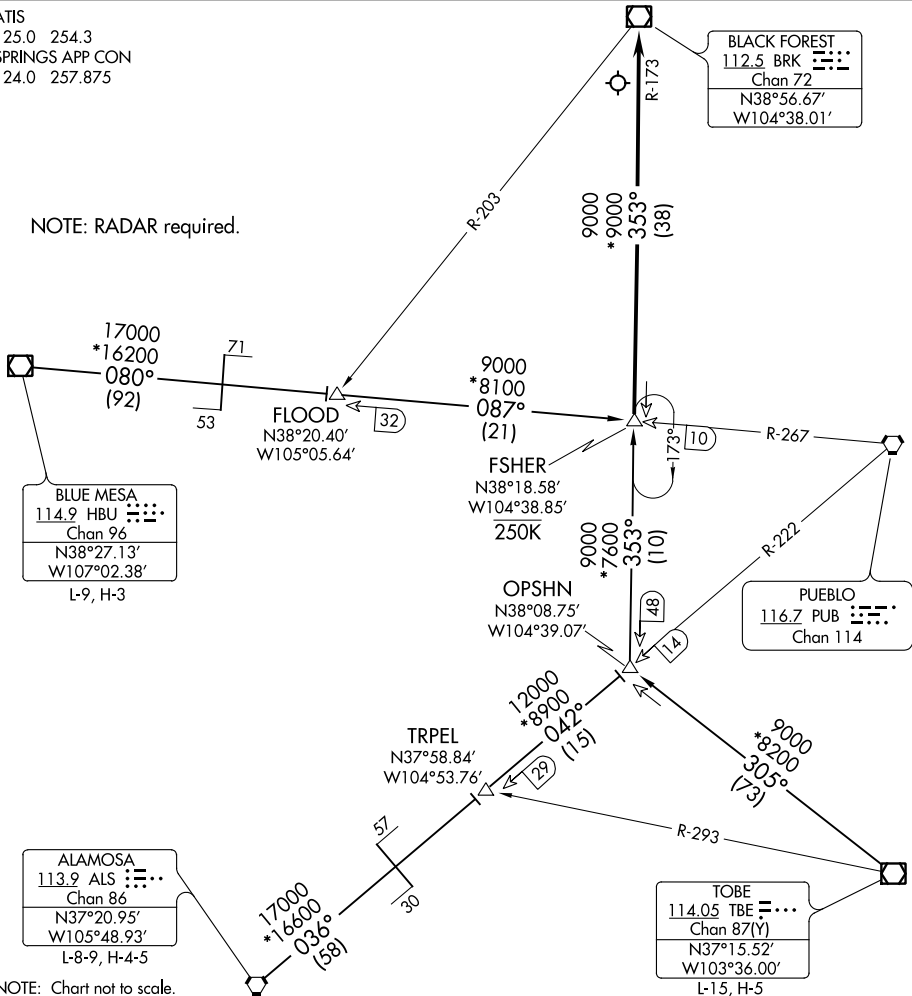
DEBERRY FIVE ARRIVAL

AL-87 (FAA)

CITY OF COLORADO SPRINGS MUNI (COS)
COLORADO SPRINGS, COLORADO

ATIS
125.0 254.3
SPRINGS APP CON
124.0 257.875

NOTE: RADAR required.



SW-1, 18 MAY 2023 to 15 JUN 2023

SW-1, 18 MAY 2023 to 15 JUN 2023

ARRIVAL ROUTE DESCRIPTION

ALAMOSA TRANSITION (ALS.DBRY5): From over ALS VORTAC on ALS R-036 and PUB R-222 to TRPEL, then on PUB R-222 and BRK R-173 to FSHER. Thence. . .

BLUE MESA TRANSITION (HBU.DBRY5): From over HBU VOR/DME on HBU R-080 and PUB R-267 to FLOOD, then on PUB R-267 to FSHER. Thence. . .

TOBE TRANSITION (TBE.DBRY5): From over TBE VOR/DME on TBE R-305 and BRK R-173 to FSHER. Thence. . .

. . . From over FSHER on BRK R-173 to BRK VOR/DME. Expect RADAR vectors to the final approach course at or before BRK VOR/DME.

LOST COMMUNICATIONS: Proceed to BRK VOR/DME.

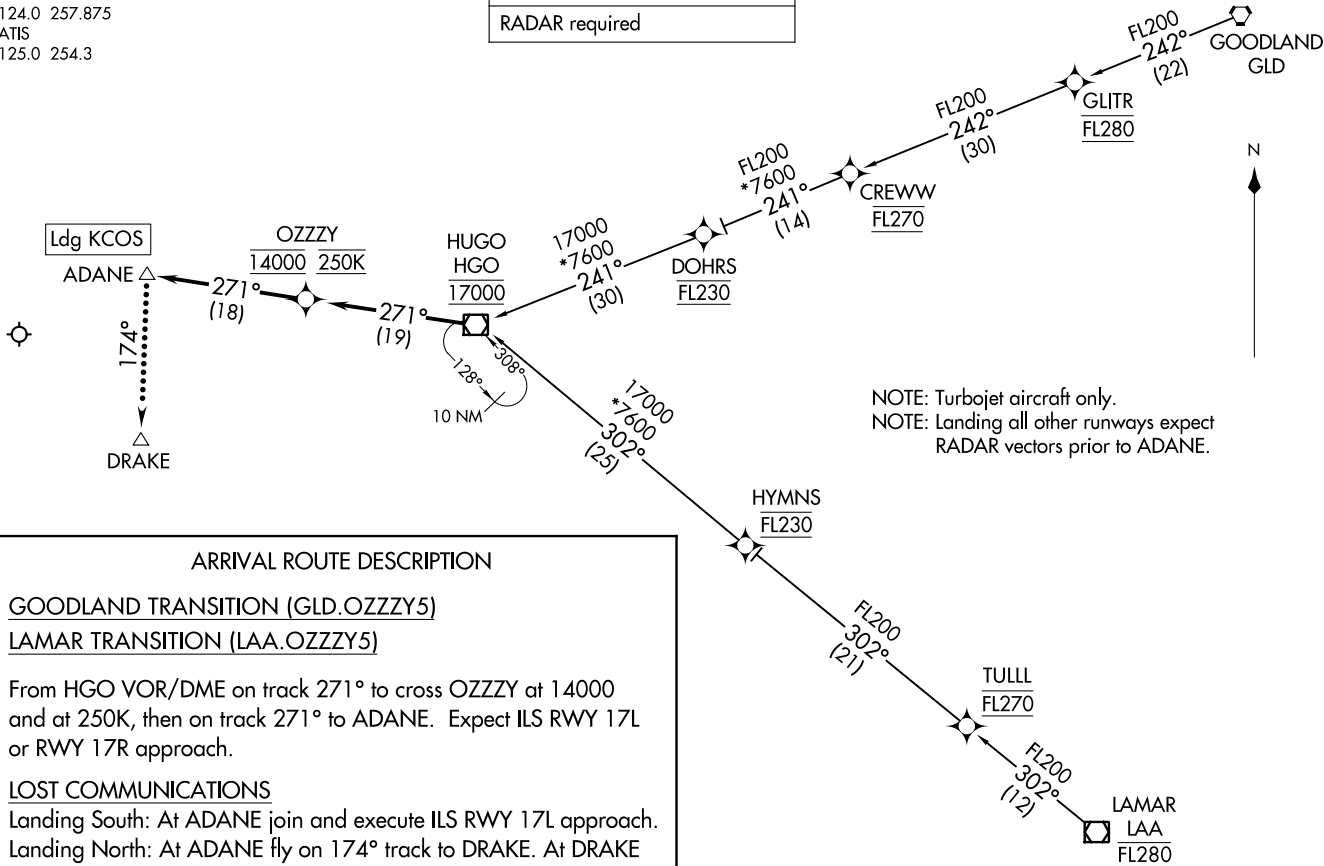
DEBERRY FIVE ARRIVAL

OZZY FIVE ARRIVAL (RNAV)
 (HGO, OZZY5) 02DEC21

COLORADO SPRINGS, COLORADO
 CITY OF COLORADO SPRINGS MUNI (COS)

SPRINGS APP CON
 124.0 257.875
 ATIS
 125.0 254.3

| |
|-----------------------------|
| RNAV 1 - DME/DME/IRU or GPS |
| RADAR required |



NOTE: Turbojet aircraft only.
 NOTE: Landing all other runways expect
 RADAR vectors prior to ADANE.



ARRIVAL ROUTE DESCRIPTION

GOODLAND TRANSITION (GLD.OZZY5)
LAMAR TRANSITION (LAA.OZZY5)
 From HGO VOR/DME on track 271° to cross OZZZY at 14000 and at 250K, then on track 271° to ADANE. Expect ILS RWY 17L or RWY 17R approach.
LOST COMMUNICATIONS
 Landing South: At ADANE join and execute ILS RWY 17L approach.
 Landing North: At ADANE fly on 174° track to DRAKE. At DRAKE join and execute ILS RWY 35L approach.

NOTE: Chart not to scale.

(HGO, OZZY5) 21336
 OZZY FIVE ARRIVAL (RNAV)

AL-87 (FAA)

CITY OF COLORADO SPRINGS MUNI (COS)
 COLORADO SPRINGS, COLORADO