

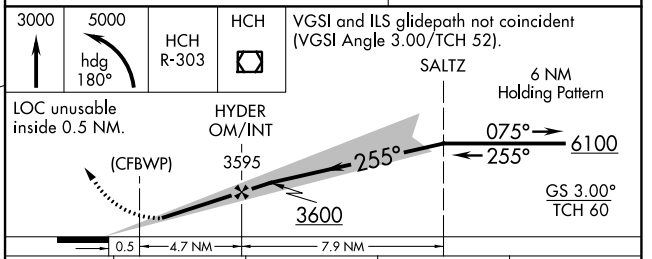
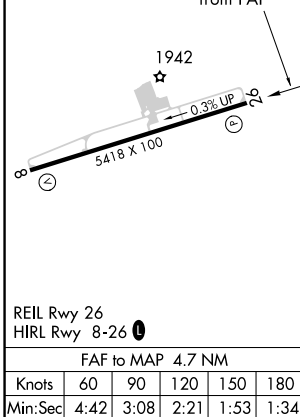
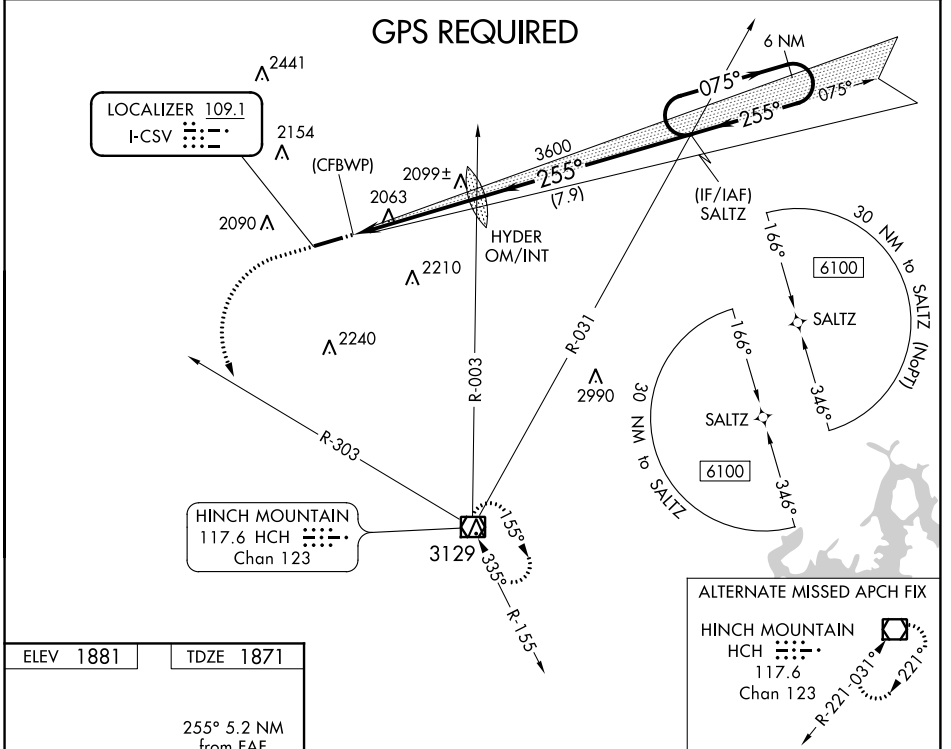
LOC I-CSV <b>109.1</b>	APP CRS <b>255°</b>	Rwy Idg TDZE Apt Elev	<b>5418</b> <b>1871</b> <b>1881</b>
---------------------------	------------------------	-----------------------------	---

# ILS Y or LOC Y RWY 26

CROSSVILLE MEML-WHITSON FLD (CSV)

**MISSED APPROACH:** Climb to 3000 then climbing left turn to 5000 on heading 180° and HCH VOR/DME R-303 to HCH VOR/DME and hold.

ASOS <b>120.625</b>	ATLANTA CENTER <b>133.6 254.3</b>	UNICOM <b>122.7 (CTAF)</b>
------------------------	--------------------------------------	-------------------------------



CATEGORY	A	B	C	D
S-ILS 26	2090- <sup>3</sup> / <sub>4</sub> 219 (300- <sup>3</sup> / <sub>4</sub> )			
S-LOC 26	2440-1	569 (600-1)	2440-1 <sup>5</sup> / <sub>8</sub>	569 (600-1 <sup>5</sup> / <sub>8</sub> )
<input checked="" type="checkbox"/> CIRCLING	2440-1	559 (600-1)	2440-1 <sup>5</sup> / <sub>8</sub>	2540-2 659 (700-2)

SE-1, 20 MAY 2021 to 17 JUN 2021

SE-1, 20 MAY 2021 to 17 JUN 2021

LOC I-CSV <b>109.1</b>	APP CRS <b>255°</b>	Rwy Idg TDZE Apt Elev	<b>5418</b> <b>1871</b> <b>1881</b>
---------------------------	------------------------	-----------------------------	---

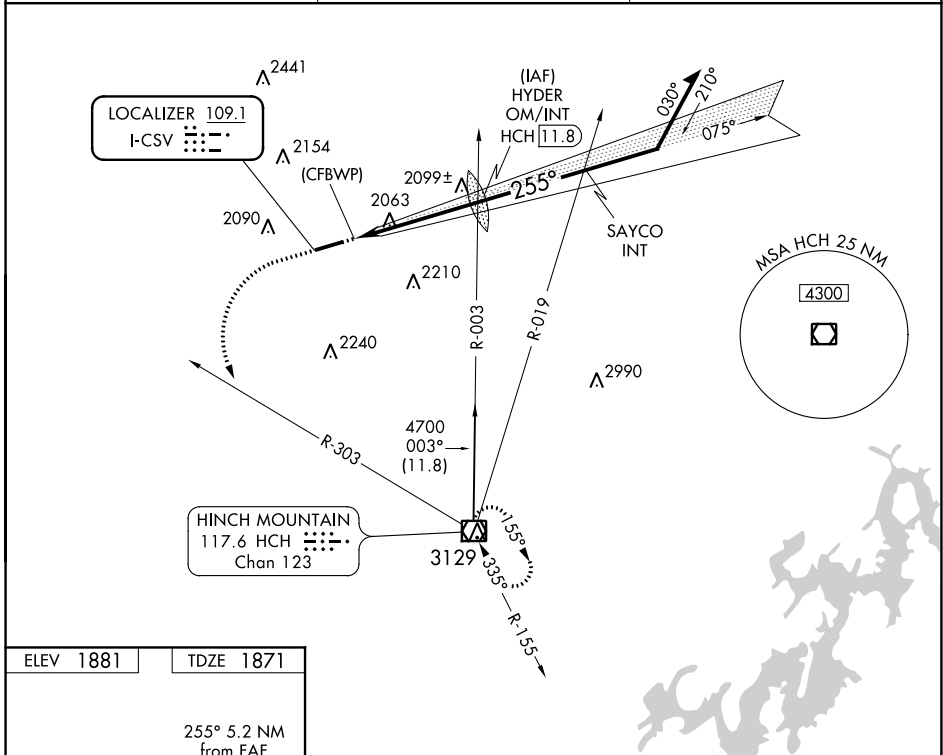
# ILS Z or LOC Z RWY 26

CROSSVILLE MEML-WHITSON FLD (CSV)

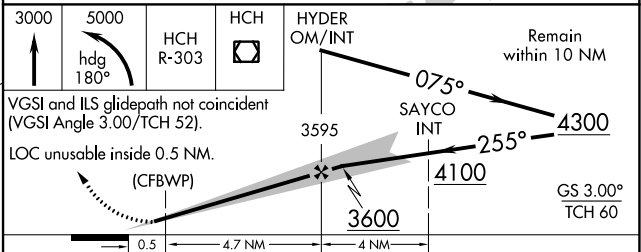
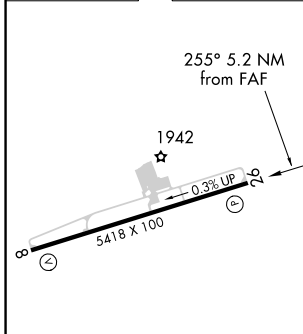
**▽**  
**▲**

MISSED APPROACH: Climb to 3000 then climbing left turn to 5000 on heading 180° and HCH VOR/DME R-303 to HCH VOR/DME and hold.

ASOS <b>120.625</b>	ATLANTA CENTER <b>133.6 254.3</b>	UNICOM <b>122.7 (CTAF)</b> <b>①</b>
------------------------	--------------------------------------	--



ELEV 1881	TDZE 1871
-----------	-----------



CATEGORY	A	B	C	D
S-ILS 26	2090- <sup>3</sup> / <sub>4</sub> 219 (300- <sup>3</sup> / <sub>4</sub> )			
S-LOC 26	2440-1	569 (600-1)	2440-1 <sup>5</sup> / <sub>8</sub>	569 (600-1 <sup>5</sup> / <sub>8</sub> )
<b>☑</b> CIRCLING	2440-1	559 (600-1)	2440-1 <sup>5</sup> / <sub>8</sub>	2540-2 659 (700-2)

REIL Rwy 26 HIRL Rwy 8-26 <b>①</b>	FAF to MAP 4.7 NM
Knots	60 90 120 150 180
Min:Sec	4:42 3:08 2:21 1:53 1:34

SE-1, 20 MAY 2021 to 17 JUN 2021

SE-1, 20 MAY 2021 to 17 JUN 2021

WAAS CH <b>65911</b> <b>W26A</b>	APP CRS <b>256°</b>	Rwy Idg TDZE Apt Elev	<b>5418</b> <b>1871</b> <b>1881</b>
--	------------------------	-----------------------------	---

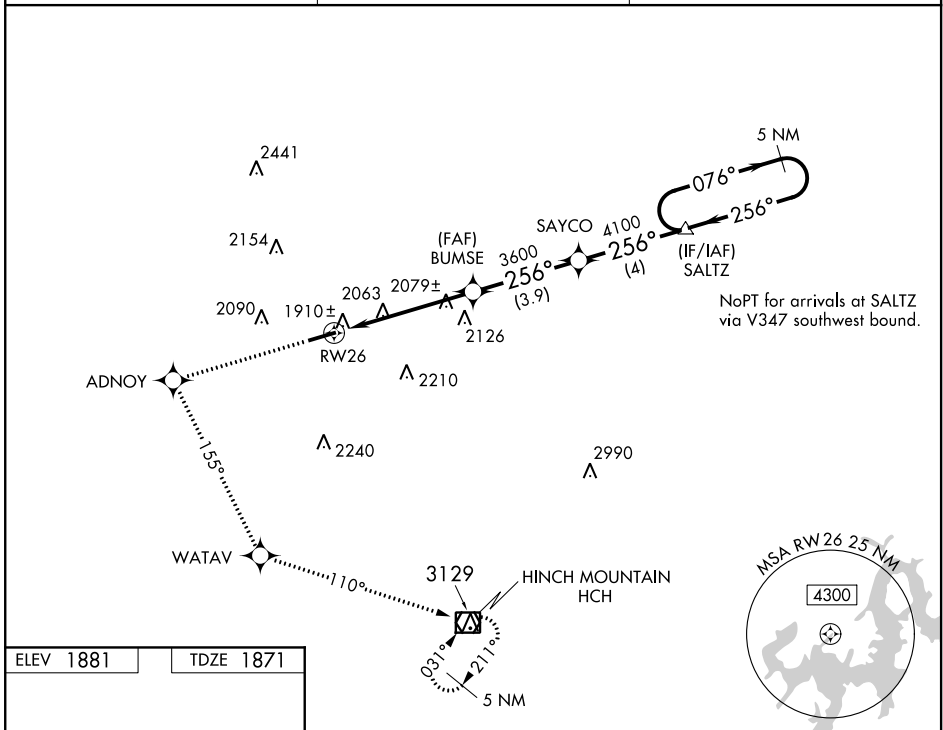
# RNAV (GPS) RWY 26

CROSSVILLE MEML-WHITSON FLD (CSV)

For uncompensated Baro-VNAV systems, LNAV/VNAV NA below -18°C (0°F) or above 45°C (113°F). DME/DME RNP-0.3 NA.

MISSED APPROACH: Climb to 5000 direct ADNOY and left turn on track 155° to WATAV and on track 110° to HCH VOR/DME and hold.

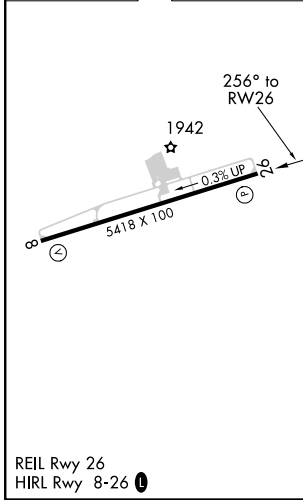
ASOS <b>120.625</b>	ATLANTA CENTER <b>133.6 254.3</b>	UNICOM <b>122.7 (CTAF) 0</b>
------------------------	--------------------------------------	---------------------------------



SE-1, 20 MAY 2021 to 17 JUN 2021

SE-1, 20 MAY 2021 to 17 JUN 2021

ELEV 1881	TDZE 1871
-----------	-----------



5000	ADNOY	WATAV	HCH	SALTZ	5 NM Holding Pattern
↑	✧	✧	□	tr 110°	
*LNAV only.					
RW26		BUMSE 3600	SAYCO 4100	SALTZ 4700	
*1.3 NM to RW26		3600	4100	076° → ← 256°	
1.3 NM		3.9 NM	3.9 NM	4 NM	
VGSi and RNAV glidepath not coincident (VGSi Angle 3.00/TCH 52).					
GP 3.00°	TCH 60				
CATEGORY	A		B		C
LPV DA	2071-3/4		200 (200-3/4)		
LNAV/VNAV DA	2170-1		299 (300-1)		
LNAV MDA	2440-1 569 (600-1)		2440-1 5/8 569 (600-1 1/2)		
CIRCLING	2440-1 559 (600-1)		2440-1 1/2 559 (600-1 1/2)		2540-2 639 (700-2)

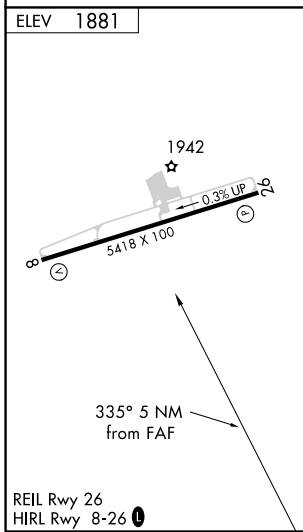
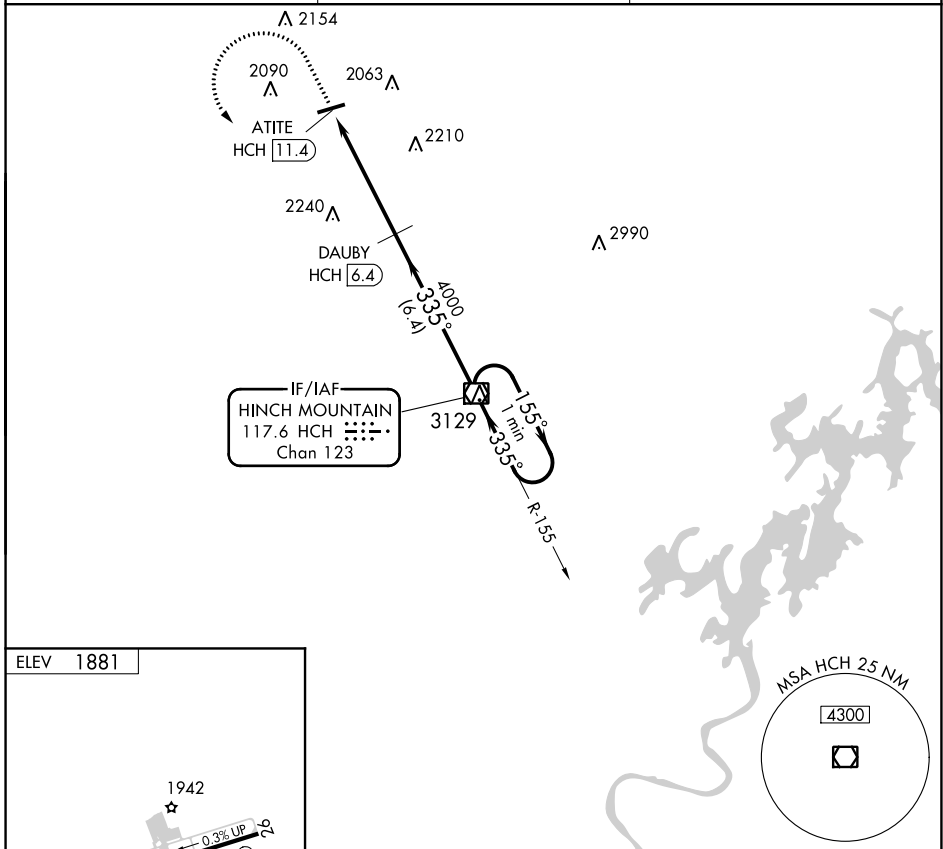
VOR/DME HCH <b>117.6</b> Chan <b>123</b>	APP CRS <b>335°</b>	Rwy Idg TDZE Apt Elev <b>1881</b>	<b>N/A</b> <b>N/A</b>
--	------------------------	---	--------------------------

# VOR-A

CROSSVILLE MEML-WHITSON FLD (CSV)

DME required.	MISSED APPROACH: Climb to 3000 then climbing left turn to 5000 direct HCH VOR/DME and hold.
---------------	---

ASOS <b>120.625</b>	ATLANTA CENTER <b>133.6 254.3</b>	UNICOM <b>122.7 (CTAF)</b>
------------------------	--------------------------------------	-------------------------------



3000	5000	HCH	HCH VOR/DME	One Minute Holding Pattern
ATITE HCH 11.4		DAUBY HCH 6.4	4000	5000
5 NM		6.4 NM		
CATEGORY	A	B	C	D
<b>C</b> CIRCLING	2340-1	459 (500-1)	2340-1½ 459 (500-1½)	2540-2 659 (700-2)

# VOR-A

SE-1, 20 MAY 2021 to 17 JUN 2021

SE-1, 20 MAY 2021 to 17 JUN 2021