


LOC I-CXY 109.1	APP CRS 082°	Rwy Idg TDZE Apt Elev	5000 342 347
---------------------------	------------------------	-----------------------------	---

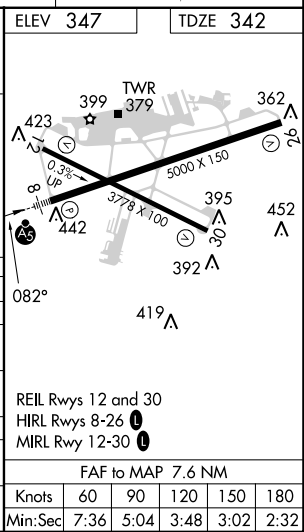
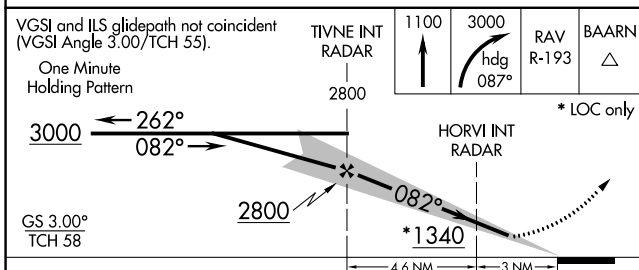
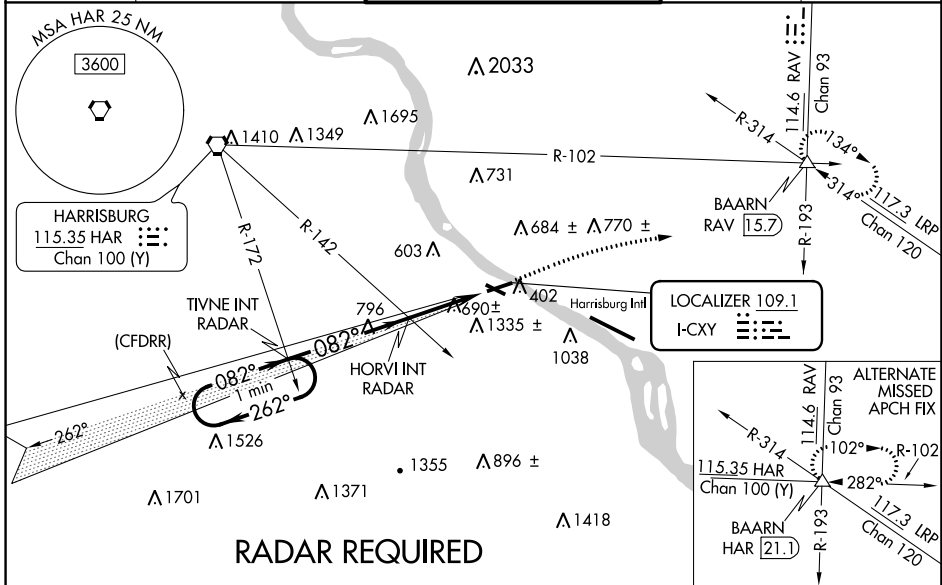
ILS or LOC RWY 8

CAPITAL CITY (CXY)

⚠ When local altimeter setting not received, use Harrisburg Intl altimeter setting. For inop MALS/R, increase S-ILS-8 all Cats visibility to 1 3/4 mile and S-LOC-8 Cat A and HORVI FIX minimums Cat A and B visibility to 1 mile. Night landing Rwy 12, 30 NA. Helicopter visibility reduction below 3/4 SM NA.

MALS/R  MISSED APPROACH: Climb to 1100 then climbing right then to 3000 on heading 087° and on RAV VORTAC R-193 to BAARN INT/RAV 15.7 DME and hold.

ATIS 134.95	HARRISBURG APP CON 124.1 273.525	CAPITAL CITY TOWER ★ 119.5 (CTAF) 257.8	GND CON 121.9	UNICOM 122.95
-----------------------	--	---	-------------------------	-------------------------



CATEGORY	A	B	C	D
S-ILS 8		834-1 1/4	492 (500-1 1/4)	
S-LOC 8	1340-1	1005 (1000-1)	1340-2 1/2	1005 (1000-2 1/2)
C CIRCLING	1340-1 1/4 993 (1000-1 1/4)	1700-1 1/2 1353 (1400-1 1/2)	1700-3	1353 (1400-3)
HORVI FIX MINIMUMS				
S-LOC 8	940-1	605 (600-1)	940-1 3/8	605 (600-1 3/8)
C CIRCLING	1200-1 1/4 853 (900-1 1/4)	1700-1 1/2 1353 (1400-1 1/2)	1700-3	1353 (1400-3)

NE-4, 22 FEB 2024 to 21 MAR 2024

NE-4, 22 FEB 2024 to 21 MAR 2024

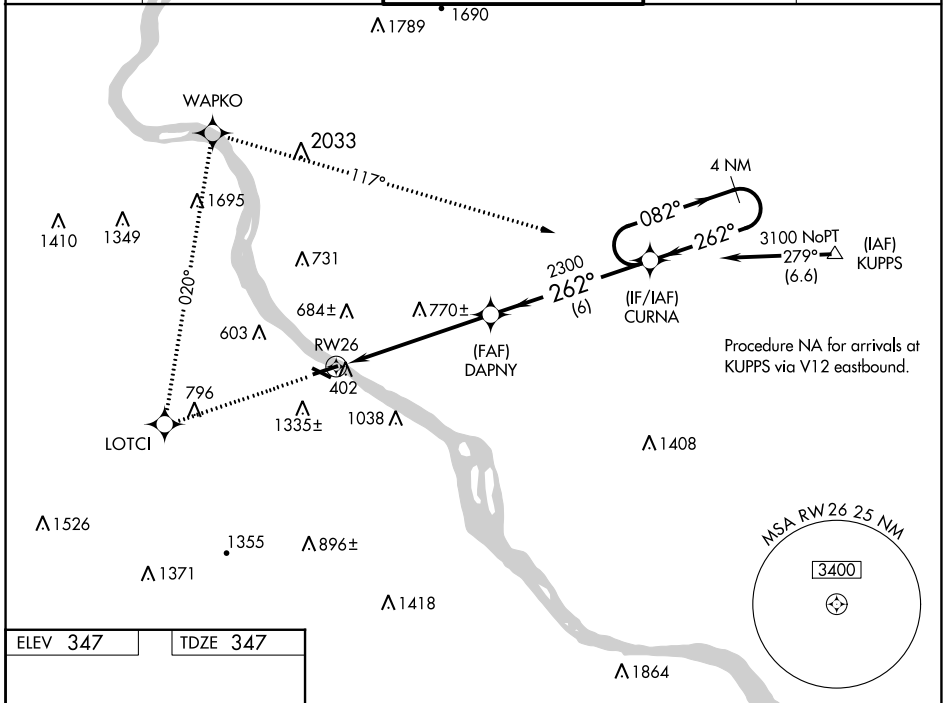
WAAS CH 86800	APP CRS 262°	Rwy Idg TDZE 347	5000
W26A		Apr Elev 347	

RNAV (GPS) RWY 26

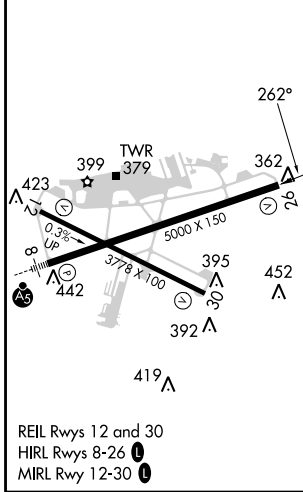
CAPITAL CITY (CXY)

RNP APCH - GPS.		MISSED APPROACH: Climb to 3100 direct LOTCI and right turn via 020° track to WAPKO and right turn 117° track to CURNA and hold.		
<p>▼ When local altimeter setting not received, use Harrisburg Intl altimeter setting. Circling Rwy 12 NA at night. Rwy 26 helicopter visibility reduction below 3/4 SM NA. Circling NA south of Rwy 8-26. VDP NA when using Harrisburg Intl altimeter setting.</p>				

ATIS 134.95	HARRISBURG APP CON 124.1 273.525	CAPITAL CITY TOWER ★ 119.5 (CTAF) 0 257.8	GND CON 121.9	UNICOM 122.95
-----------------------	--	---	-------------------------	-------------------------

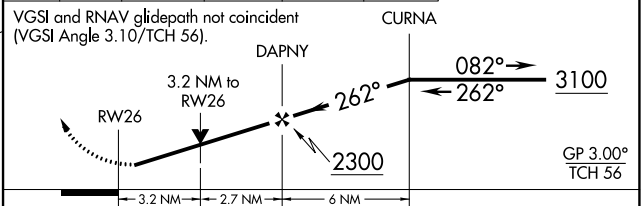


ELEV 347	TDZE 347
-----------------	-----------------



REIL Rws 12 and 30
HIRL Rws 8-26
MIRL Rwy 12-30

3100	LOTCI	WAPKO	CURNA	4 NM Holding Pattern
↑	✧	tr 020°	✧	



CATEGORY	A	B	C	D
LPV DA	847-1 3/8 500 (500-1 3/8)			
LNAV MDA	1460-1 1/4 1113 (1200-1 1/4)	1460-1 1/2 1113 (1200-1 1/2)	1460-3	1113 (1200-3)
CIRCLING	1460-1 1/4 1113 (1200-1 1/4)	1700-1 1/2 1353 (1400-1 1/2)	1700-3	1353 (1400-3)

NE-4, 22 FEB 2024 to 21 MAR 2024

NE-4, 22 FEB 2024 to 21 MAR 2024

WAAS CH 70610 W08A	APP CRS 082°	Rwy Idg TDZE Apt Elev	5000 342 347
--	------------------------	-----------------------------	---

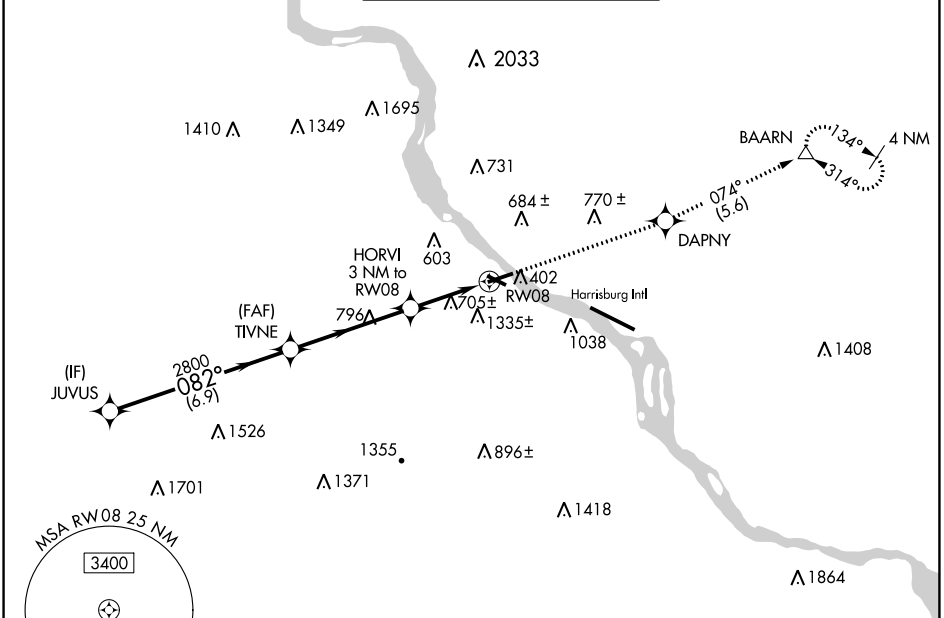
RNAV (GPS) RWY 8

CAPITAL CITY (CXY)

⚠ DME/DME RNP-0.3 NA. When local altimeter setting not received, use Harrisburg Intl altimeter setting. For inop MALSRL, increase LPV all Cats visibility to 1½ mile and increase LNAV Cat C, D visibility to 1¾ mile. Helicopter visibility reduction below 1 SM NA. Procedure NA at night.

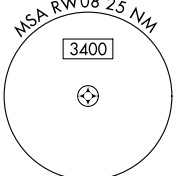
MALSRL
⚠ MISSED APPROACH: Climb to 3000 direct DAPNY and on track 074° to BAARN and hold.

ATIS 134.95	HARRISBURG APP CON 124.1 273.525	CAPITAL CITY TOWER * 119.5 (CTAF) 257.8	GND CON 121.9	UNICOM 122.95
-----------------------	--	---	-------------------------	-------------------------

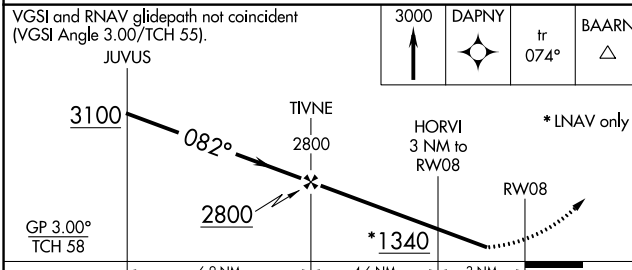


NE-4, 22 FEB 2024 to 21 MAR 2024

NE-4, 22 FEB 2024 to 21 MAR 2024

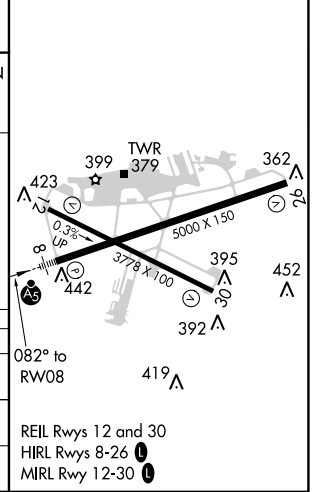


RADAR REQUIRED



ELEV 347	TDZE 342
----------	----------

CATEGORY	A	B	C	D
LPV DA	833-1¼		491 (500-1¼)	
LNAV MDA	960-1	625 (700-1)	960-1¾	625 (700-1¾)
C CIRCLING	1200-1¼ 853 (900-1¼)	1700-1½ 1353 (1400-1½)	1700-3	1353 (1400-3)



REIL Rwy 12 and 30
HIRL Rwy 8-26
MIRL Rwy 12-30