

LOC/DME I-DCU 110.55 Chan 42 (Y)	APP CRS 185°	Rwy ldg 6107 TDZE 592 Apt Elev 592
---	------------------------	---

ILS or LOC RWY 18

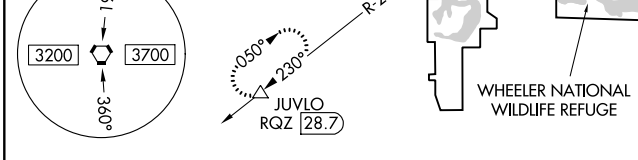
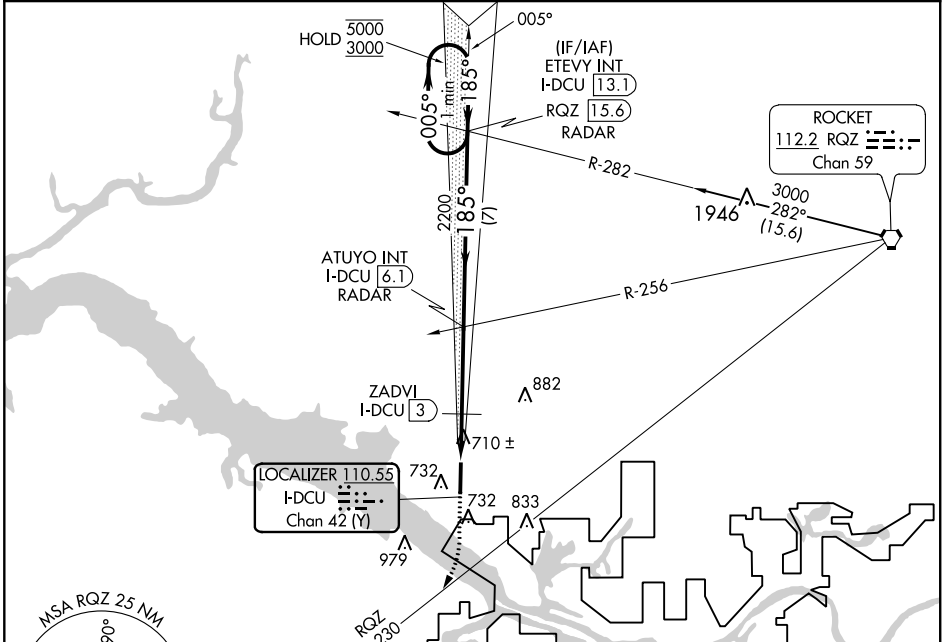
PRYOR FLD RGNL (DCU)

DME required.

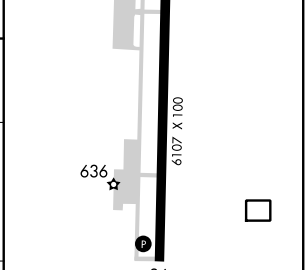
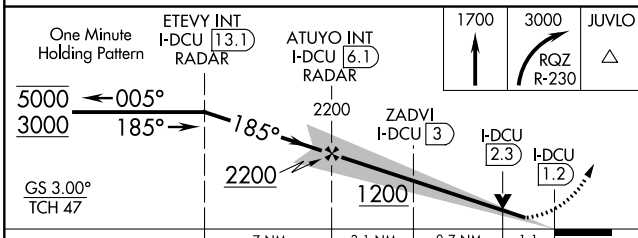
▽
▲

MISSED APPROACH: Climb to 1700, then climbing right turn to 3000 on RQZ VORTAC R-230 to JUVLO/RQZ 28.7 DME and hold.

ASOS 118.375	HUNTSVILLE APP CON* 118.05 239.0	UNICOM 123.075 (CTAF) 0
------------------------	--	-----------------------------------



ELEV 592	TDZE 592
----------	----------



CATEGORY	A	B	C	D
S-ILS 18		792- ³ / ₄	200 (200- ³ / ₄)	
S-LOC 18	980-1	388 (400-1)	980-1 ¹ / ₈	388 (400-1 ¹ / ₈)
◻ CIRCLING	1040-1 448 (500-1)	1060-1 468 (500-1)	1340-2 ¹ / ₄ 748 (800-2 ¹ / ₄)	1340-2 ¹ / ₂ 748 (800-2 ¹ / ₂)

HIRL Rwy 18-36 0				
REIL Rws 18 and 36 0				
FAF to MAP 4.9 NM				
Knots	60	90	120	150 180
Min:Sec	4:54	3:16	2:27	1:58 1:38

SE-4, 11 AUG 2022 to 08 SEP 2022

SE-4, 11 AUG 2022 to 08 SEP 2022

WAAS CH 82200 W18A	APP CRS 185°	Rwy Idg TDZE Apt Elev	6107 592 592
--	------------------------	-----------------------------	---

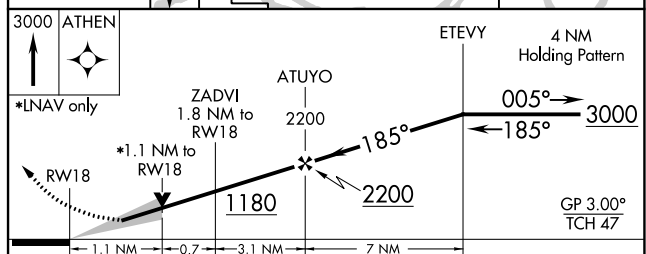
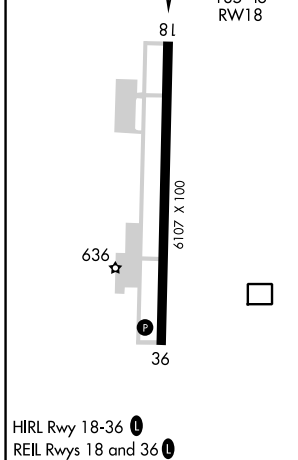
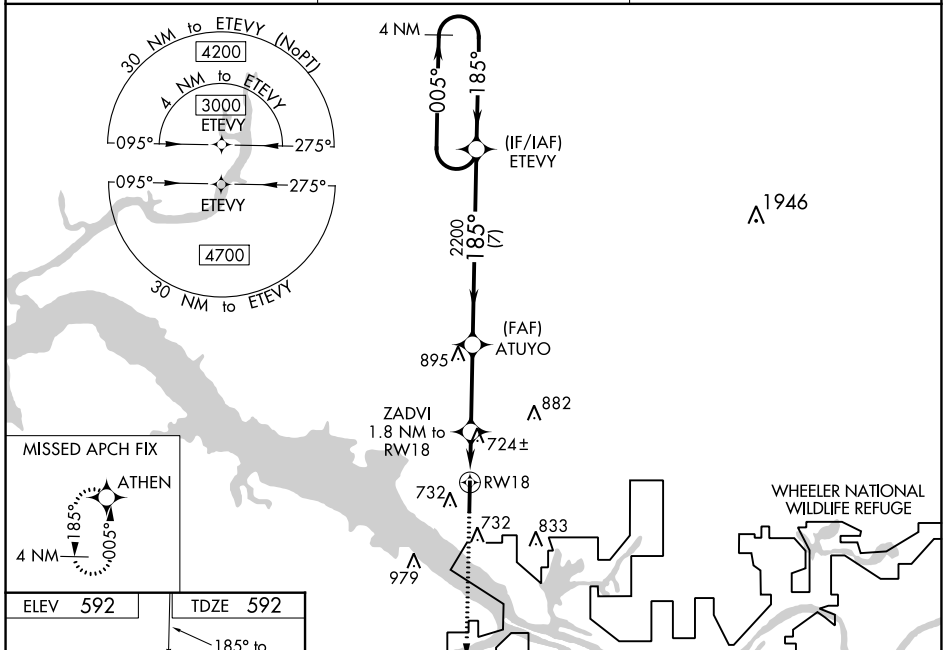
RNAV (GPS) RWY 18

PRYOR FLD RGNL (DCU)

⚠ DME/DME RNP-0.3 NA. When local altimeter setting not received, use Huntsville Intl-Carl T Jones Fld altimeter setting: increase LPV DA to 817 and LNAV/VNAV DA to 920 and all visibilities ½ mile. Increase all MDA 40 feet and LNAV Cat C and D visibility ⅓ mile. VDP and Baro-VNAV NA when using Huntsville Intl-Carl T Jones Fld altimeter setting. For uncompensated Baro-VNAV systems, LNAV/VNAV NA below -11°C (13°F) or above 54°C (130°F).

MISSED APPROACH: Climb to 3000 direct ATHEN and hold.

ASOS 118.375	HUNTSVILLE APP CON* 118.05 239.0	UNICOM 123.075 (CTAF) 0
------------------------	--	-----------------------------------



CATEGORY	A	B	C	D
LPV DA		792-¾	200 (200-¾)	
LNAV/VNAV DA		895-1	303 (400-1)	
LNAV MDA	980-1	388 (400-1)	980-1⅛	388 (400-1⅛)
C CIRCLING	1040-1 448 (500-1)	1060-1 468 (500-1)	1340-2¼ 748 (800-2¼)	1340-2½ 748 (800-2½)

SE-4, 11 AUG 2022 to 08 SEP 2022

SE-4, 11 AUG 2022 to 08 SEP 2022

WAAS CH 90204 W36A	APP CRS 005°	Rwy Idg TDZE Apt Elev	6107 588 592
--	------------------------	-----------------------------	---

RNAV (GPS) RWY 36

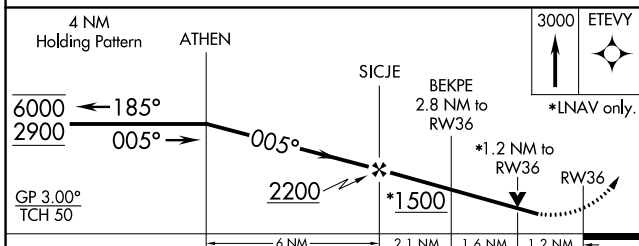
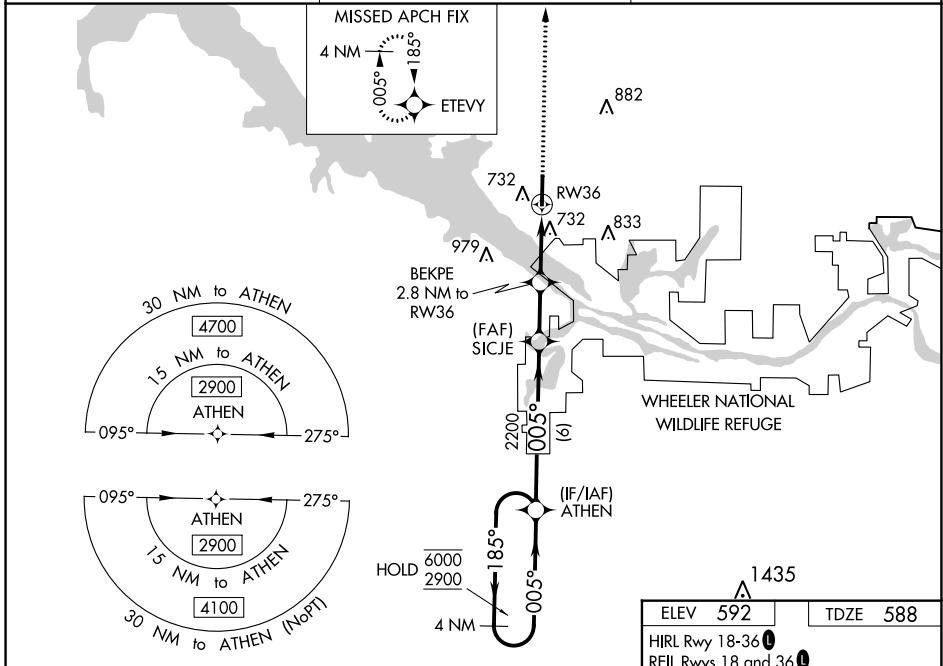
PRYOR FLD RGNL (DCU)

RNP APCH.

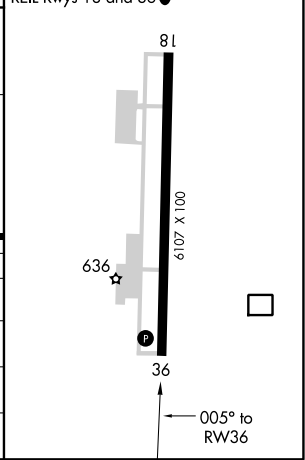
⚠ Rwy 36 helicopter visibility reduction below $\frac{3}{4}$ SM NA.
⚠ For uncompensated Baro-VNAV systems, LNAV/VNAV NA below -12°C or above 54°C.

MISSED APPROACH: Climb to 3000 direct ETEVY and hold.

ASOS 118.375	HUNTSVILLE APP CON ★ 118.05 239.0	UNICOM 123.075 (CTAF)
------------------------	---	---------------------------------



CATEGORY	A	B	C	D
LPV DA	900-1	312 (400-1)		
LNAV/VNAV DA	1041-1 $\frac{3}{8}$	453 (500-1 $\frac{3}{8}$)		
LNAV MDA	1000-1	412 (500-1)	1000-1 $\frac{1}{8}$	412 (500-1 $\frac{1}{8}$)
CIRCLING	1040-1 448 (500-1)	1060-1 468 (500-1)	1340-2 $\frac{1}{4}$ 748 (800-2 $\frac{1}{4}$)	1340-2 $\frac{1}{2}$ 748 (800-2 $\frac{1}{2}$)



SE-4, 11 AUG 2022 to 08 SEP 2022

SE-4, 11 AUG 2022 to 08 SEP 2022