

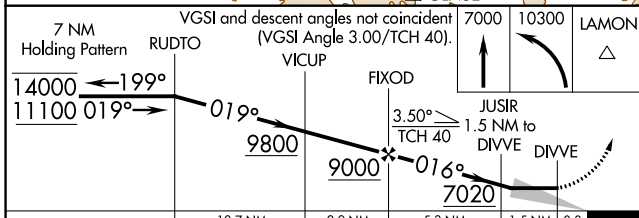
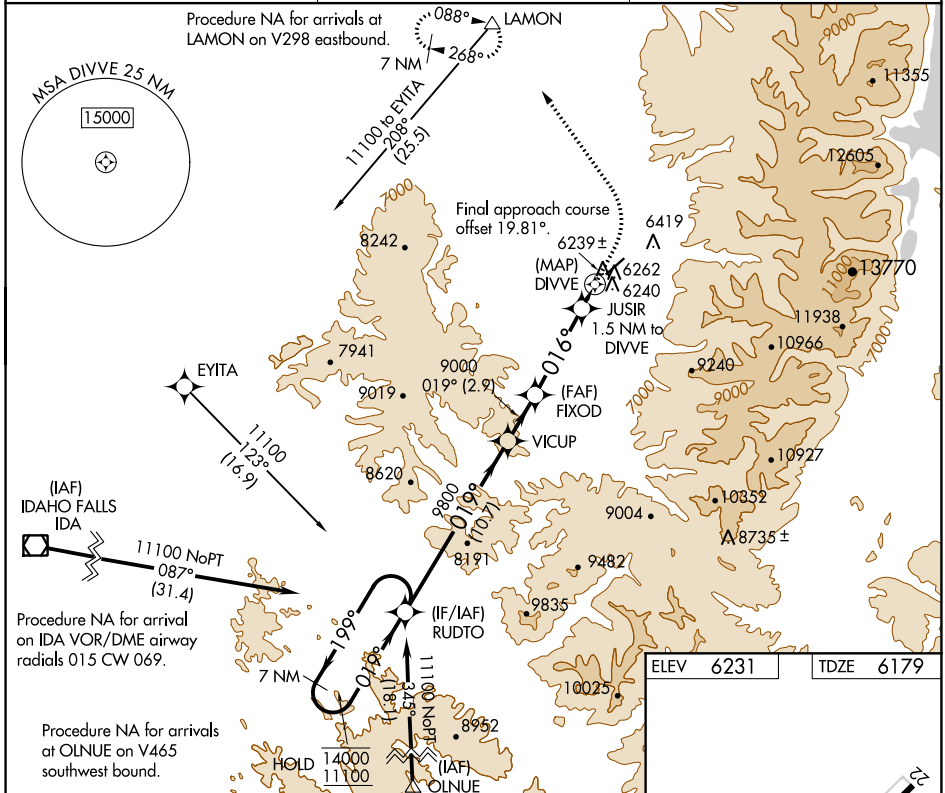
WAAS CH 48827 W04A	APP CRS 016°	Rwy Idg TDZE Apt Elev	7300 6179 6231
----------------------------------------	------------------------	-----------------------------	-------------------------------------------

RNAV (GPS) RWY 4

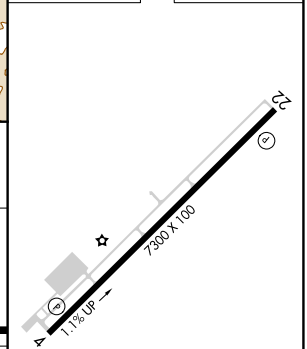
DRIGGS-REED MEML (DIJ)

RNP APCH.	MISSED APPROACH: Climb to 7000 then climbing left turn to 10300 direct LAMON and hold, continue climb-in-hold to 10300.
<p>Circling NA for Cats C and D southeast of Rwy 4-22.</p>	

AWOS-3PT 120.775	SALT LAKE CENTER 128.35 239.25	UNICOM 122.7 (CTAF) 0
----------------------------	------------------------------------------	---------------------------------



ELEV 6231	TDZE 6179
-----------	-----------



CATEGORY	A	B	C	D
LP MDA	6500-1 321 (300-1)			
LNAV MDA	6540-1 361 (400-1)			
CIRCLING	6760-1	6820-1	6880-1¼	7400-3
	529 (600-1)	589 (600-1)	649 (700-1¼)	1169 (1200-3)

MIRL Rwy 4-22 0
REIL Rwy 22 0

NW-1, 22 APR 2021 to 20 MAY 2021

NW-1, 22 APR 2021 to 20 MAY 2021

APP CRS 168°	Rwy Idg TDZE Apt Elev	N/A N/A 6231
------------------------	-----------------------------	-----------------------------------------

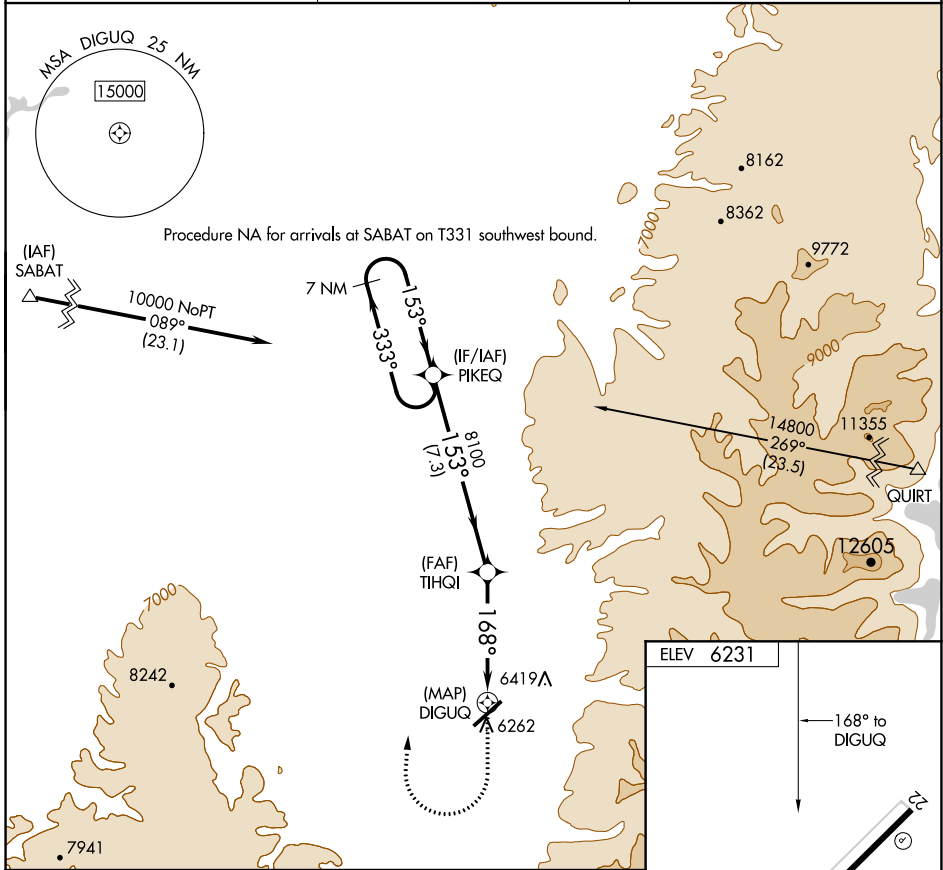
RNAV (GPS)-A

DRIGGS-REED MEML (DIJ)

⚠ Circling NA for Cats C and D southeast of Rwy 4-22.
⚠ DME/DME RNP-0.3 NA.

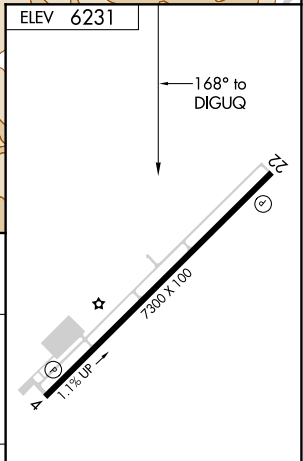
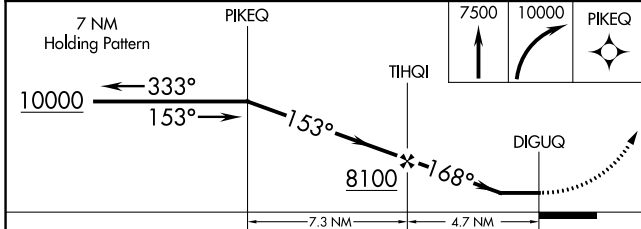
MISSED APPROACH: (Do not exceed 185K until established direct PIKEQ) Climb to 7500 then climbing right turn to 10000 direct PIKEQ and hold.

AWOS-3PT 120.775	SALT LAKE CENTER 128.35 239.25	UNICOM 122.7 (CTAF) 0
----------------------------	------------------------------------------	---------------------------------



NW-1, 22 APR 2021 to 20 MAY 2021

NW-1, 22 APR 2021 to 20 MAY 2021



CATEGORY	A	B	C	D
C CIRCLING	6900-1 669 (700-1)		6900-1¾ 669 (700-1¾)	7400-3 1169 (1200-3)

MIRL Rwy 4-22 **0**
 REIL Rwy 22 **0**