

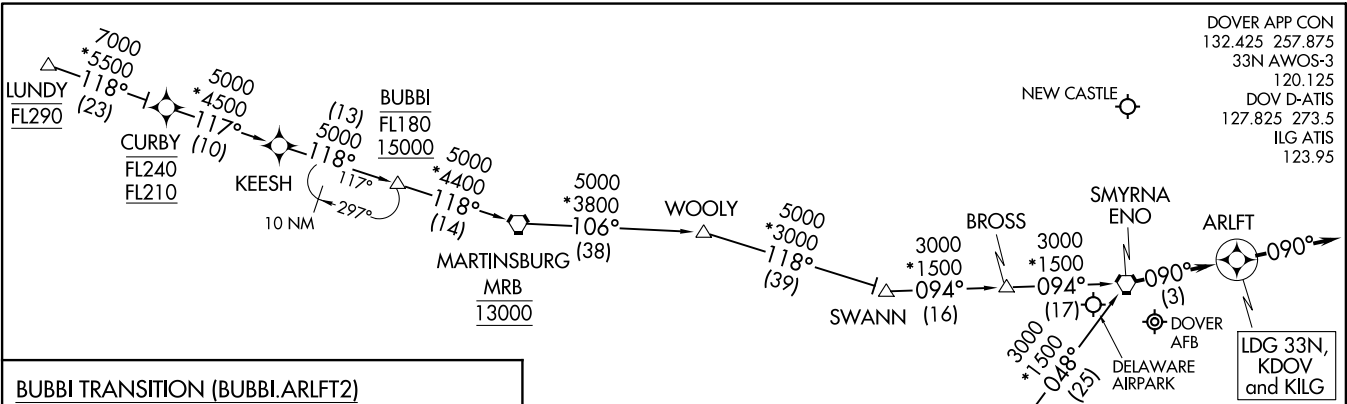
ARLFT TWO ARRIVAL (RNAV)  
(ENO.ARLFT2) 12AUG21

(ENO.ARLFT2) 21224  
ARLFT TWO ARRIVAL (RNAV)

AL-562 (FAA)

DOVER/CHESWOLD, DELAWARE

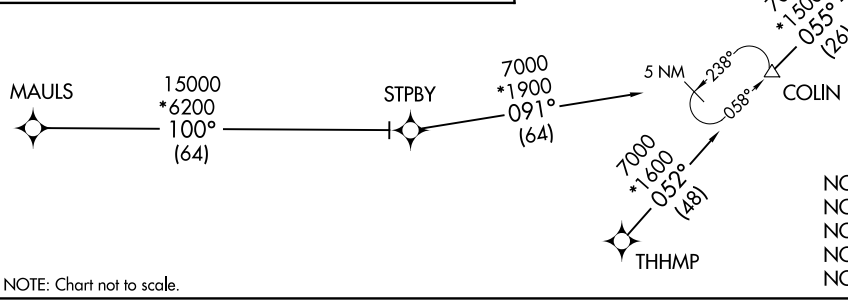
DOVER APP CON  
132.425 257.875  
33N AWOS-3  
120.125  
DOV D-ATIS  
127.825 273.5  
ILG ATIS  
123.95



LDG 33N, KDOV and KILG

- BUBBI TRANSITION (BUBBI.ARLFT2)
- LUNDY TRANSITION (LUNDY.ARLFT2)
- MAULS TRANSITION (MAULS.ARLFT2)
- THHMP TRANSITION (THHMP.ARLFT2)

LANDING KDOV/33N/KILG: From ENO VORTAC on track 090° to ARLFT, then on heading 090° or as assigned by ATC. Expect RADAR vectors to final approach course.



- NOTE: RADAR required
- NOTE: RNAV 1
- NOTE: DME/DME/IRU or GPS required
- NOTE: LUNDY Transition for KDOV and 33N arrivals only
- NOTE: BUBBI Transition ATC assigned only

NOTE: Chart not to scale.

DOVER/CHESWOLD, DELAWARE