

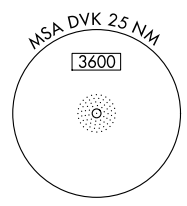
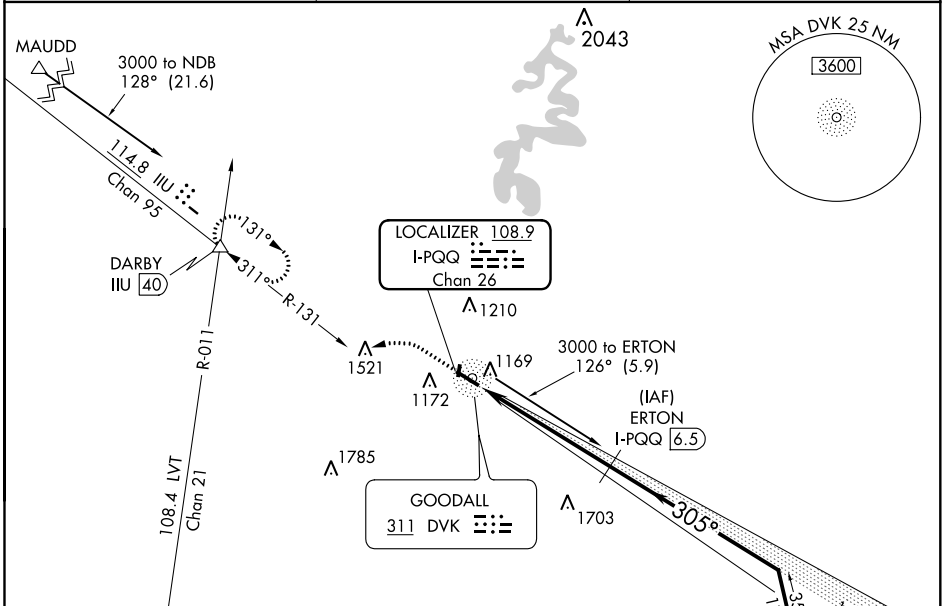
LOC/DME I-PQQ 108.9 Chan 26	APP CRS 305°	Rwy Idg TDZE Apt Elev 5000 1016 1022
--	------------------------	--

LOC RWY 31
STUART POWELL FLD (DVK)

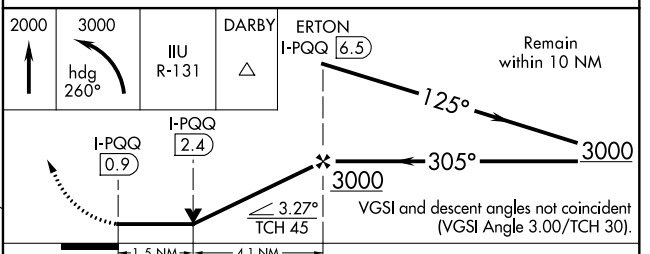
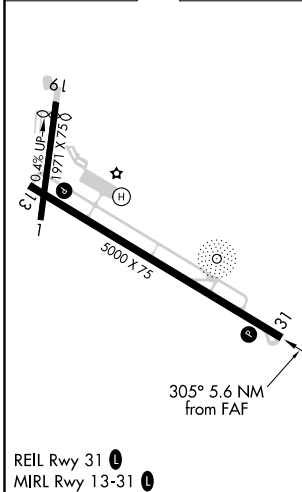
DME required.
ADF or RADAR required for procedure entry.

MISSED APPROACH: Climb to 2000 then climbing left turn to 3000 on heading 260° and IJU VORTAC R-131 to DARBY INT and hold.

AWOS-3 128.325	LEXINGTON APP CON 120.15 259.3	UNICOM 122.8 (CTAF)
--------------------------	--	-------------------------------



ELEV 1022	TDZE 1016
-----------	-----------



CATEGORY	A	B	C	D
S-31	1520-1	504 (500-1)	1520-1 ³ / ₈	504 (500-1 ³ / ₈)
<input checked="" type="checkbox"/> CIRCLING	1520-1 498 (500-1)	1700-1 678 (700-1)	1720-2 698 (700-2)	1840-2 ³ / ₄ 818 (900-2 ³ / ₄)

SE-1, 19 MAY 2022 to 16 JUN 2022

SE-1, 19 MAY 2022 to 16 JUN 2022

NDB DVK 311	APP CRS 211°	Rwy Idg TDZE Apt Elev	N/A N/A 1022
-----------------------	------------------------	-----------------------------	---

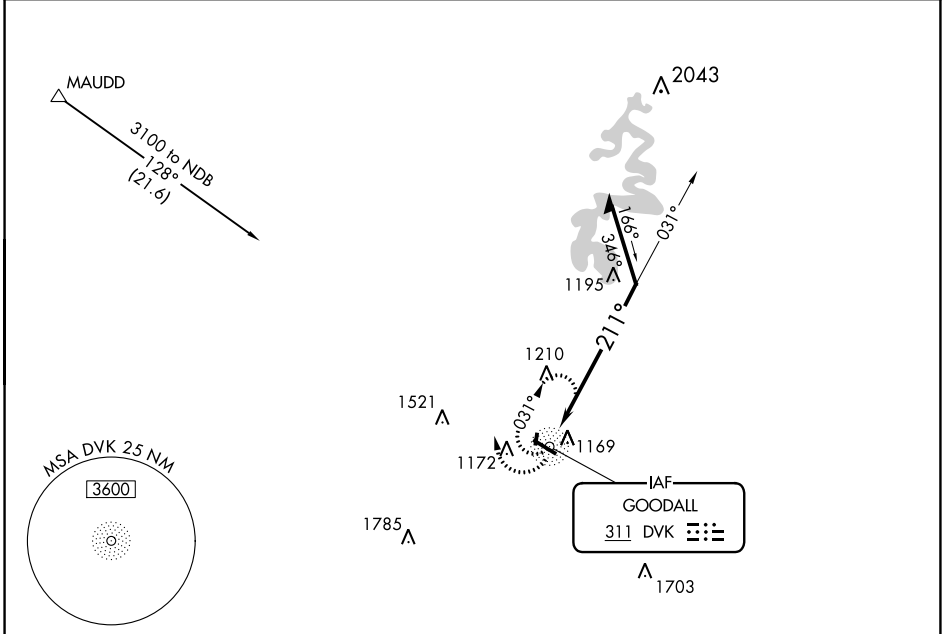
NDB-A

STUART POWELL FLD (DVK)

NA When local altimeter setting not received, use Lexington altimeter setting and increase all MDAs 80 feet and visibility Cats C and D ¼ mile. Rwy 1, 19 helicopter visibility reduction below 1 SM NA. Circling Rwy 1, 19 NA at night.

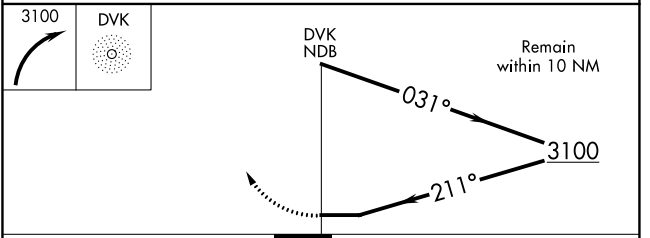
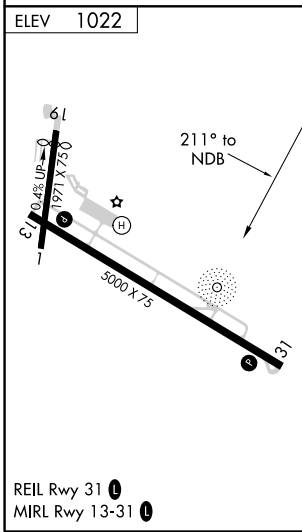
MISSED APPROACH: Climbing right turn to 3100 in DVK NDB holding pattern.

AWOS-3 128.325	LEXINGTON APP CON 120.15 259.3	UNICOM 122.8 (CTAF)
--------------------------	--	-------------------------------



SE-1, 19 MAY 2022 to 16 JUN 2022

SE-1, 19 MAY 2022 to 16 JUN 2022



REIL Rwy 31 **1**
MIRL Rwy 13-31 **1**

CATEGORY	A	B	C	D
CIRCLING	1600-1 578 (600-1)	1700-1 678 (700-1)	1720-2 698 (700-2)	1840-2¾ 818 (900-2¾)

WAAS CH 93706 W13A	APP CRS 124°	Rwy Idg TDZE 1017 Apt Elev 1022	5000
--	------------------------	---	-------------

RNAV (GPS) RWY 13

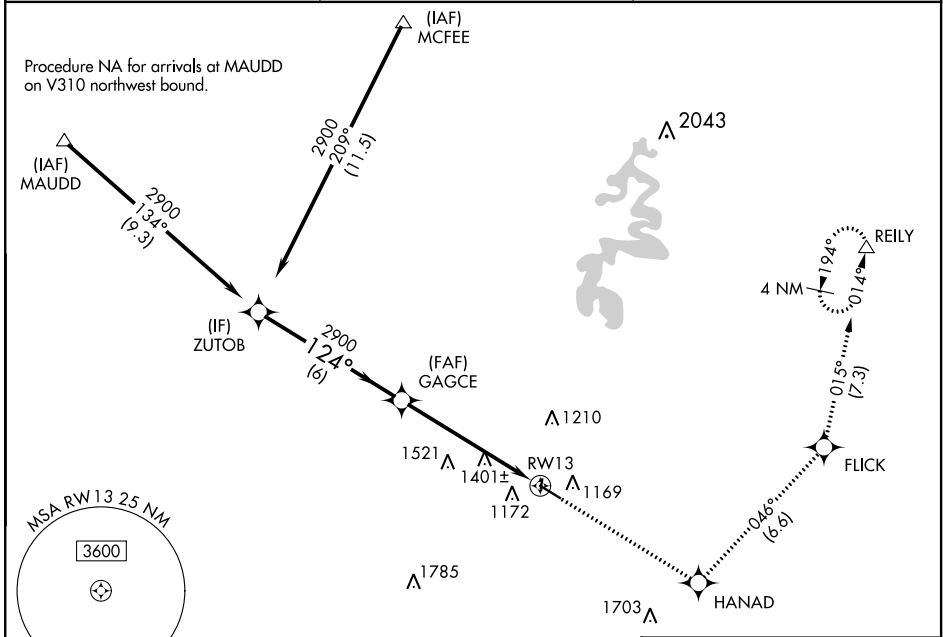
STUART POWELL FLD (DVK)

RNP APCH - GPS.

▼ Rwy 13 helicopter visibility reduction below 3/4 SM NA.
▲ For uncompensated Baro-VNAV systems, LNAV/VNAV NA below -17°C or above 54°C.

MISSED APPROACH: Climb to 3000 direct HANAD and on track 046° to FLICK and on track 015° to RELY and hold.

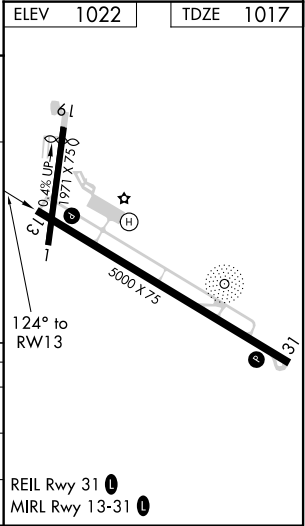
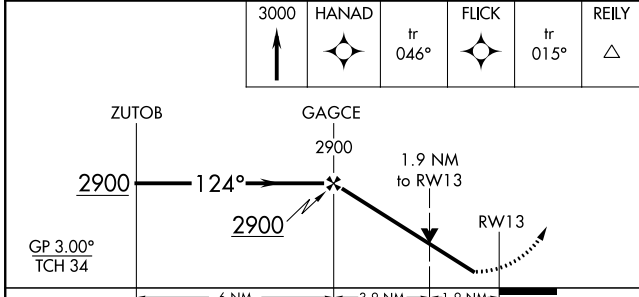
AWOS-3 128.325	LEXINGTON APP CON 120.15 259.3	UNICOM 122.8 (CTAF) 0
--------------------------	--	---------------------------------



SE-1, 19 MAY 2022 to 16 JUN 2022

SE-1, 19 MAY 2022 to 16 JUN 2022

ELEV 1022	TDZE 1017
-----------	-----------



CATEGORY	A	B	C	D
LPV DA	1267-1		250 (300-1)	
LNAV/VNAV DA	1660-1 3/4		643 (700-1 3/4)	
LNAV MDA	1660-1	643 (700-1)	1660-1 3/4	643 (700-1 3/4)

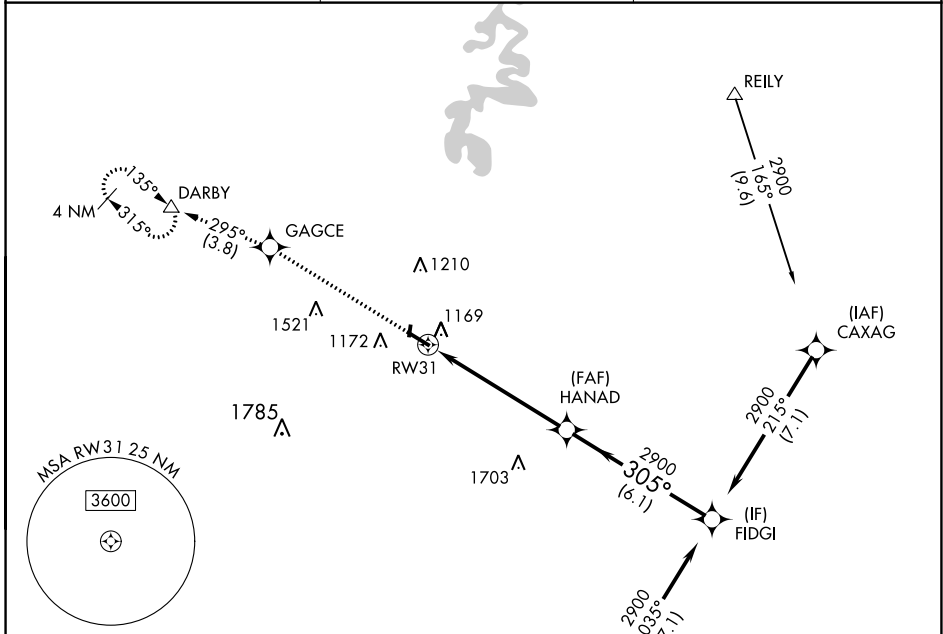
WAAS CH 70506 W31A	APP CRS 305°	Rwy Idg TDZE 1016 Apt Elev 1022	5000 1016 1022
--	------------------------	---	---

RNAV (GPS) RWY 31

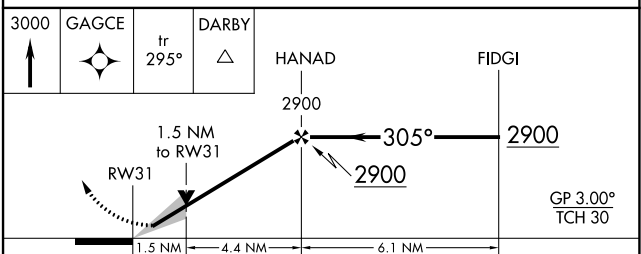
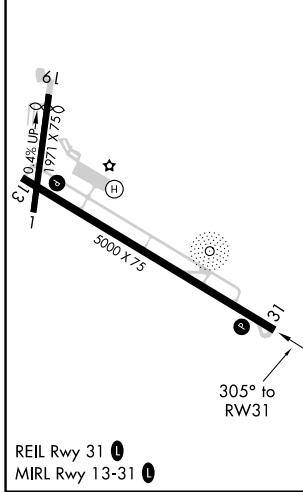
STUART POWELL FLD (DVK)

RNP APCH - GPS.	MISSED APPROACH: Climb to 3000 direct GAGCE and on track 295° to DARBY and hold.
<p>▼ For uncompensated Baro-VNAV systems, LNAV/VNAV NA below -17° C or above 54° C.</p> <p>▲</p>	

AWOS-3 128.325	LEXINGTON APP CON 120.15 259.3	UNICOM 122.8 (CTAF) 0
--------------------------	--	---------------------------------



ELEV 1022	TDZE 1016
-----------	-----------



CATEGORY	A	B	C	D
LPV DA	1216-1 200 (200-1)			
LNAV/VNAV DA	1492-1 ³ / ₈ 476 (500-1 ³ / ₈)			
LNAV MDA	1520-1 504 (500-1)		1520-1 ³ / ₈ 504 (500-1 ³ / ₈)	
<input checked="" type="checkbox"/> CIRCLING	1520-1 498 (500-1)	1680-1 658 (700-1)	1720-2 698 (700-2)	1840-2 ³ / ₄ 818 (900-2 ³ / ₄)

SE-1, 19 MAY 2022 to 16 JUN 2022

SE-1, 19 MAY 2022 to 16 JUN 2022