

APP CRS	Rwy Idg	6002
168°	TDZE	152
	Apt Elev	152

RNAV (GPS) RWY 17R

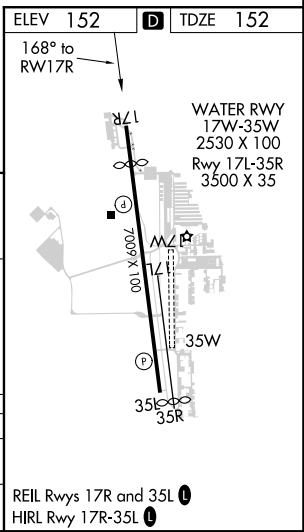
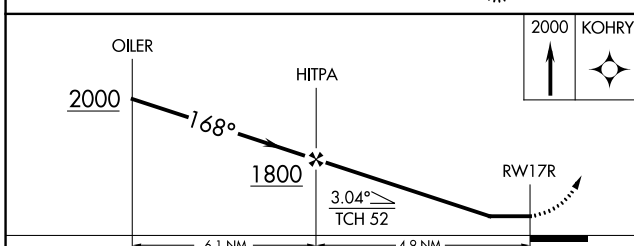
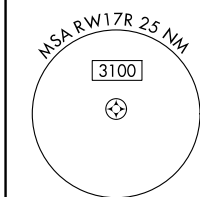
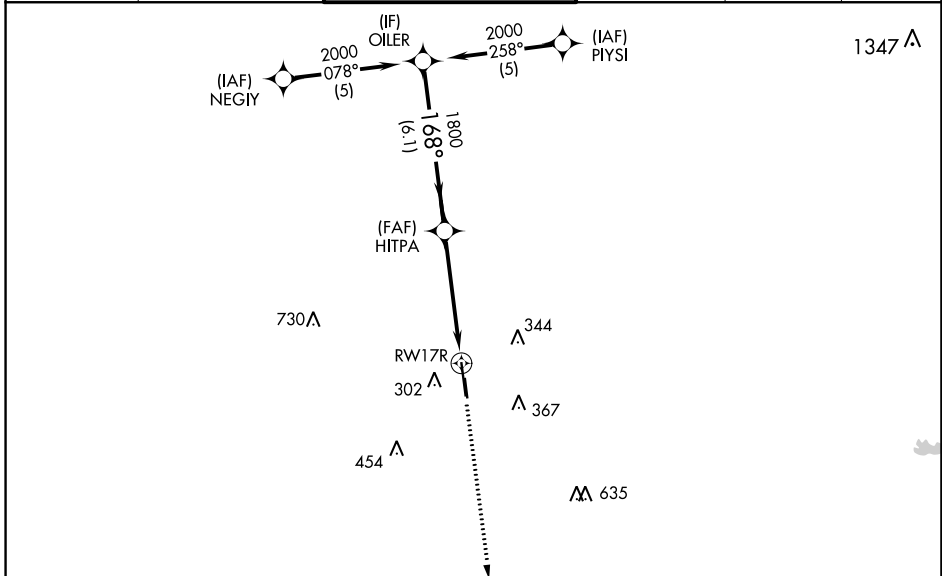
DAVID WAYNE HOOKS MEMORIAL (DWH)

RNP APCH.

When local altimeter setting not received, use George Bush Intercontinental/Houston altimeter setting and increase all MDA 40 feet and LNAV Cat C/D visibility 1/8 mile. Circling NA to Rwys 17W and 35W. Rwy 17R helicopter visibility reduction below 3/4 SM NA.

MISSED APPROACH: Climb to 2000 direct KOHRY and hold.

ATIS	HOUSTON APP CON	HOOKS TOWER*	GND CON	CLNC DEL	UNICOM
128.375	119.7 281.4	127.4 354.1 EAST 118.4 (CTAF) 0 354.1 WEST	121.8 239.0	119.45	122.95



CATEGORY	A	B	C	D
LNAV MDA	640-1	488 (500-1)	640-1 3/8	488 (500-1 3/8)
CIRCLING	640-1 488 (500-1)	660-1 508 (600-1)	680-1 1/2 528 (600-1 1/2)	760-2 608 (700-2)

REIL Rwys 17R and 35L
HIRL Rwy 17R-35L

SC-5, 05 NOV 2020 to 03 DEC 2020

SC-5, 05 NOV 2020 to 03 DEC 2020

WAAS CH 45603 W35A	APP CRS 348°	Rwy ldg 6700 TDZE 152 Apt Elev 152
--	------------------------	---

RNAV (GPS) RWY 35L

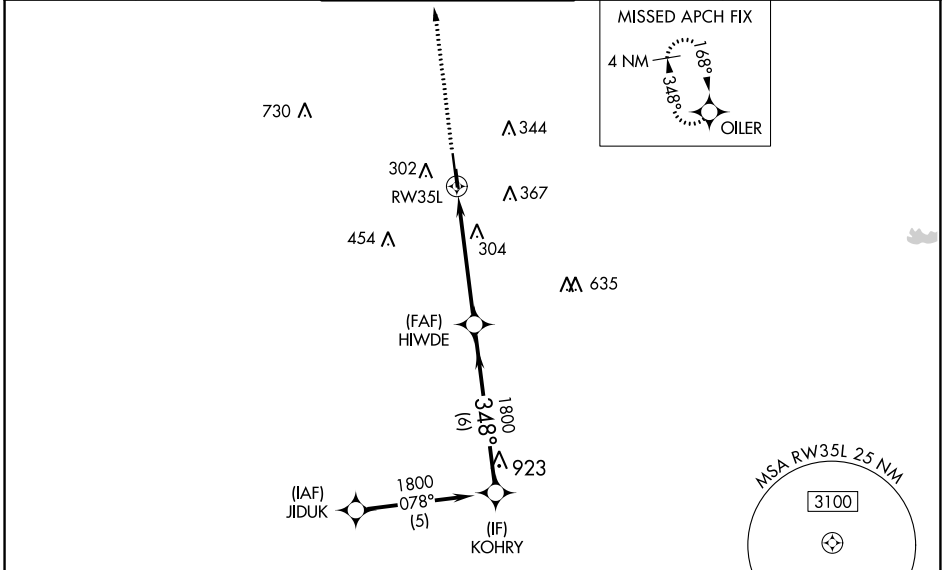
DAVID WAYNE HOOKS MEMORIAL (DWH)

RNP APCH.

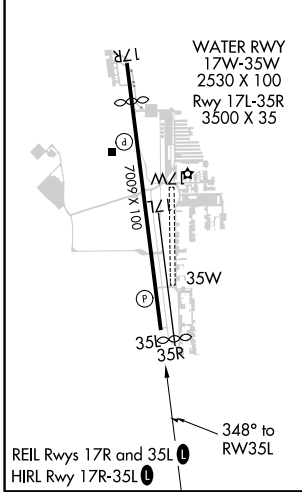
⚠ Baro-VNAV and VDP NA when using George Bush Intercontinental/Houston altimeter setting. For uncompensated Baro-VNAV systems, LNAV/VNAV NA below -4°C (25°F) or above 54°C (130°F). When local altimeter setting not received, use George Bush Intercontinental/Houston altimeter setting and increase all DA 36 feet and all MDA 40 feet, increase LPV and LNAV/VNAV visibility all Cats 1/8 mile, LNAV visibility Cats C/D 1/4 mile. Rwy 35L helicopter visibility reduction below 3/4 SM NA. Circling NA to Rwys 17W and 35W.

MISSED APPROACH: Climb to 2000 direct OILER and hold.

ATIS 128.375	HOUSTON APP CON 119.7 281.4	HOOKS TOWER* 127.4 354.1 (EAST) 118.4 (CTAF) 0 354.1 (WEST)	GND CON 121.8 239.0	CLNC DEL 119.45	UNICOM 122.95
------------------------	---------------------------------------	---	-------------------------------	---------------------------	-------------------------



ELEV 152	D	TDZE 152
-----------------	----------	-----------------



2000	OILER	VGSi and RNAV glidepath not coincident (VGSi Angle 3.00/TCH 41).			
*LNAV only.	*1.2 NM to RWY35L	HIWDE 1800	KOHRY 1800		GP 3.00° TCH 45
1.2 NM		3.8 NM		6 NM	
CATEGORY	A	B	C	D	
LPV DA	451-1		299 (300-1)		
LNAV/ VNAV DA	552-1 3/8		400 (400-1 1/8)		
LNAV MDA	560-1 408 (500-1)		560-1 1/8		408 (500-1 1/8)
C CIRCLING	640-1 488 (500-1)	660-1 508 (600-1)	680-1 1/2 528 (600-1 1/2)	760-2 608 (700-2)	

SC-5, 05 NOV 2020 to 03 DEC 2020

SC-5, 05 NOV 2020 to 03 DEC 2020