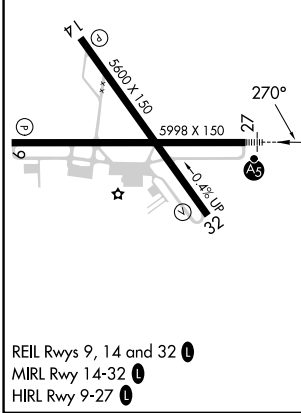
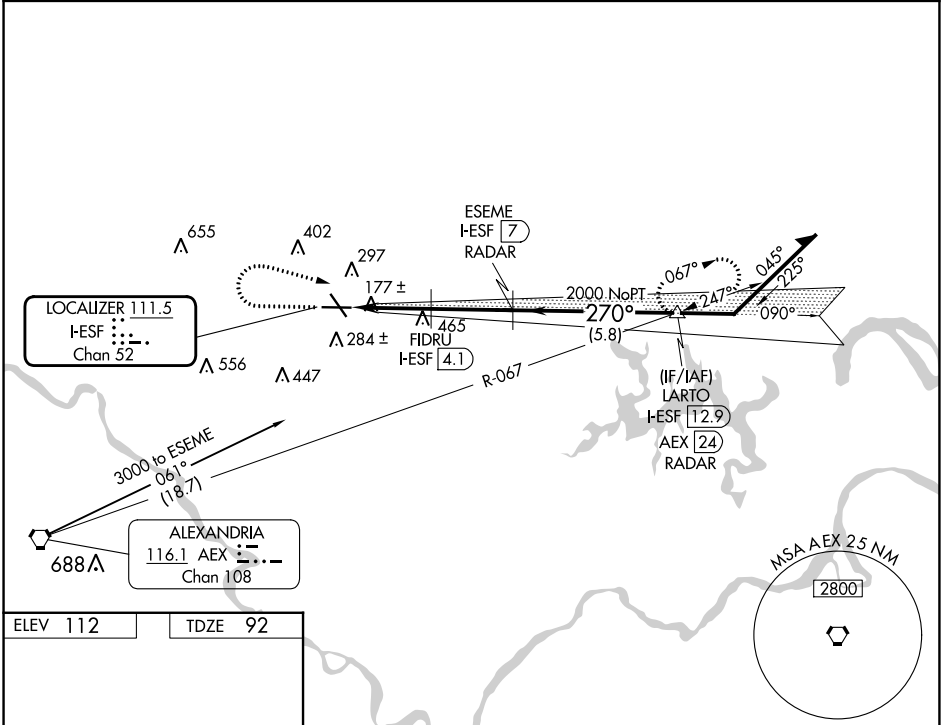


LOC I-ESF 111.5 Chan 52	APP CRS 270°	Rwy Idg 5998 TDZE 92 Apt Elev 112
---	------------------------	--

ILS or LOC/DME RWY 27

ESLER RGNL (E/SF)

RADAR or DME required.		MALSRS 	MISSED APPROACH: Climb to 1500 then climbing right turn to 3000 on heading 120° and on AEX VORTAC R-067 to LARTO/AEX 24.1 DME/RADAR and hold.
<p> Circling Rwy 14, 32 NA at night. VDP NA with Alexandria Intl altimeter setting. When local altimeter not received, use Alexandria Intl altimeter setting and increase DA to 327 feet; increase all MDA to 40 feet and Circling visibility Cat D 1/4 SM. For inop MALSRS, increase S-LOC 27 Cat C/D visibility to 1 SM.</p>			
ESF ASOS 119.425	POLK APP CON 125.4 254.8	UNICOM 122.8 (CTAF)	



1500	3000	AEX R-067	LARTO AEX [24.1] RADAR	ESEME I-ESF [7] RADAR	Remain within 10 NM
*LOC only.					
*1060		FIDRU I-ESF [4.1]	I-ESF [1.2]	I-ESF [2.1]	2000 090° 270° 2500 2000
-0.9 - 2 NM - 2.9 NM -		GS 3.00° TCH 59			
CATEGORY	A	B	C	D	
S-ILS 27	292-1/2		200 (200-1/2)		
S-LOC 27	440-1/2 348 (400-1/2)		440-5/8 348 (400-5/8)		
CIRCLING	600-1 488 (500-1)		740-13/4 628 (700-13/4)		760-2 648 (700-2)

SC-4, 22 FEB 2024 to 21 MAR 2024

SC-4, 22 FEB 2024 to 21 MAR 2024

WAAS CH 61103 W27A	APP CRS 270°	Rwy Idg TDZE Apt Elev	5998 92 112
--	------------------------	-----------------------------	--

RNAV (GPS) RWY 27

ESLER RGNL (E/SF)

RNP APCH-GPS.

⚠ Circling Rwy 14, 32 NA at night. Baro-VNAV and VDP NA when using Alexandria Intl altimeter setting. For uncompensated Baro-VNAV systems, LNAV/VNAV NA below -6°C or above 54°C. When local altimeter setting not received, use Alexandria Intl altimeter setting: increase LPV DA to 327 feet; increase LNAV/VNAV DA to 457 feet and all visibility 1/8 SM; increase all MDAs 40 feet and LNAV visibility Cat C/D 1/8 SM and Circling visibility Cat D 1/4 SM. For inop MALSR increase LNAV/VNAV all Cats visibility to 1 mile and LNAV Cat C/D visibility to 1 1/8. For inop MALSR, when using Alexandria Intl altimeter setting, increase LNAV/VNAV all Cats visibility to 1 SM.

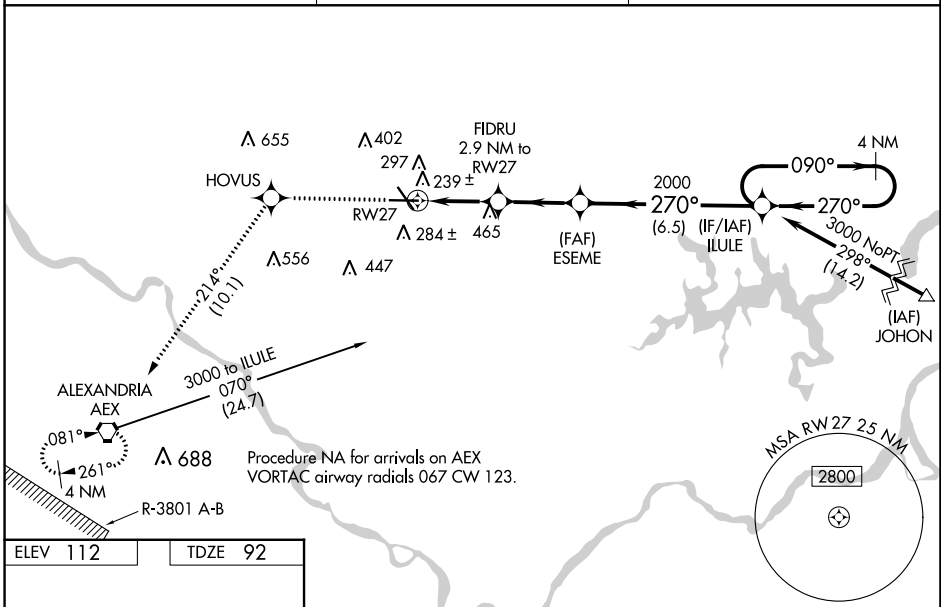


MISSED APPROACH:
Climb to 3000 direct HOVUS and on track 214° to AEX VORTAC and hold.

ESF ASOS
119.425

POLK APP CON
125.4 254.8

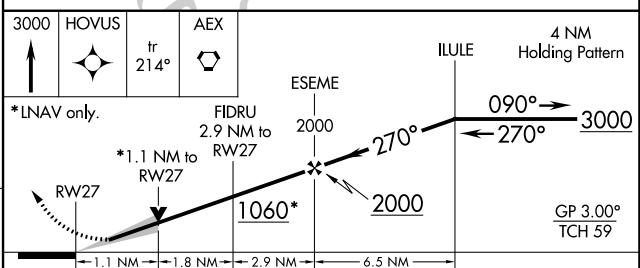
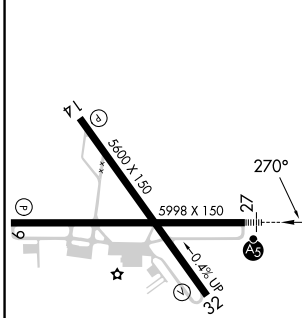
UNICOM
122.8 (CTAF) **①**



SC-4, 22 FEB 2024 to 21 MAR 2024

SC-4, 22 FEB 2024 to 21 MAR 2024

ELEV 112	TDZE 92
----------	---------



CATEGORY	A	B	C	D
LPV DA		292-1/2	200 (200-1/2)	
LNAV/VNAV DA		422-1/2	330 (400-1/2)	
LNAV MDA	500-1/2	408 (400-1/2)	500-3/4	408 (400-3/4)
CIRCLING	600-1	488 (500-1)	740-13/4 628 (700-13/4)	760-2 648 (700-2)

REIL Rws 9, 14 and 32 **①**
MIRL Rwy 14-32 **①**
HIRL Rwy 9-27 **①**

WAAS CH 77617 W09A	APP CRS 090°	Rwy Idg TDZE Apt Elev	5998 96 112
--	------------------------	-----------------------------	--

RNAV (GPS) RWY 9

ESLER RGNL (E/SF)

RNP APCH-GPS

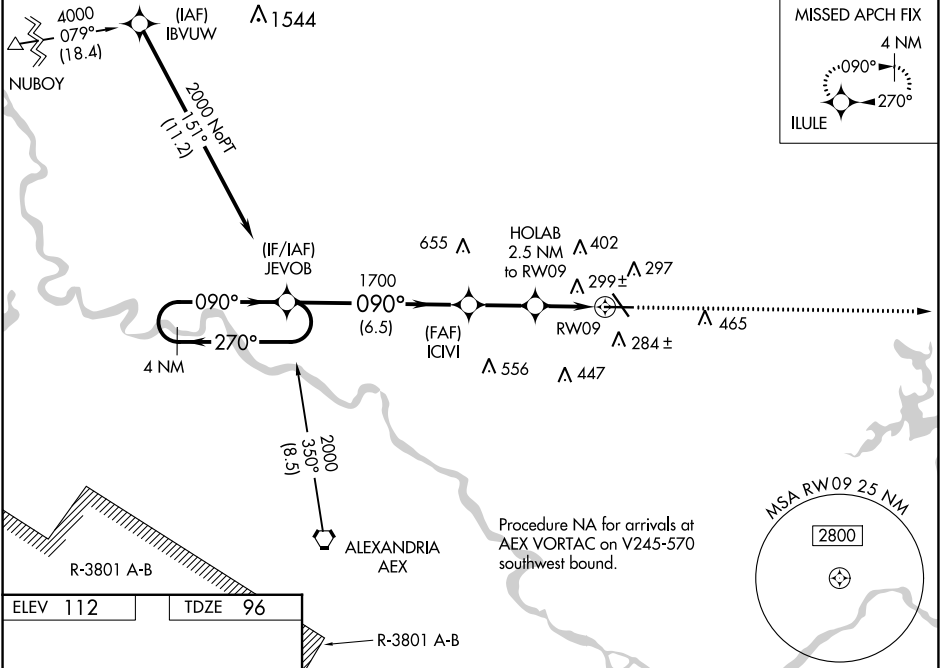
⚠ Circling Rwy 14, 32 NA at night. Baro-VNAV and VDP NA when using Alexandria Intl altimeter setting. For uncompensated Baro-VNAV systems, LNAV/VNAV NA below -6°C or above 54°C. When local altimeter setting not received, use Alexandria Intl altimeter setting; increase LPV DA to 331 feet; increase LNAV/VNAV DA to 644 feet and all visibility ¼ SM; increase all MDAs 40 feet and Circling visibility Cat D ¼.

MISSED APPROACH: Climb to 3000 direct ILULE and hold.

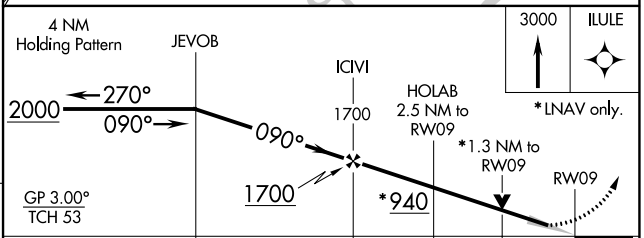
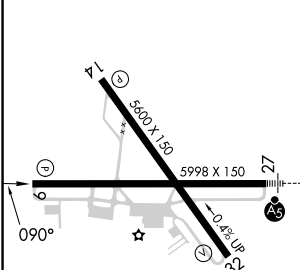
ESF ASOS
119.425

POLK APP CON
125.4 254.8

UNICOM
122.8 (CTAF) 0



ELEV 112	TDZE 96
----------	---------



CATEGORY	A	B	C	D
LPV DA		296-¾	200 (200-¾)	
LNAV/VNAV DA		609-1⅜	513 (500-1⅞)	
LNAV MDA	560-1	464 (500-1)	560-1⅜	464 (500-1⅞)
CIRCLING	600-1	488 (500-1)	740-1¾ 628 (700-1¾)	760-2 648 (700-2)

REIL Rws 9, 14 and 32
MIRL Rwy 14-32
HIRL Rwy 9-27

SC-4, 22 FEB 2024 to 21 MAR 2024

SC-4, 22 FEB 2024 to 21 MAR 2024