

VORTAC TYI 117.8 Chan 125	APP CRS 291°	Rwy Idg 3999 TDZE 50 Apt Elev 53
---	------------------------	---

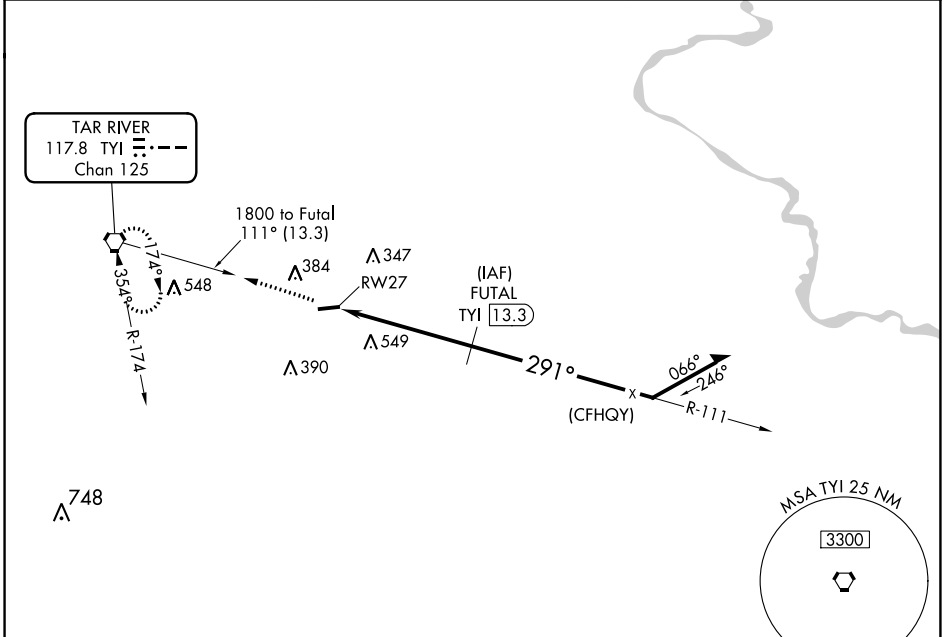
VOR/DME or GPS RWY 27

TARBORO-EDGEcombe (E/T/C)

▼ Use Rocky Mount altimeter setting; when not received
▲ NA use Raleigh-Durham altimeter setting minimums.

MISSED APPROACH: Climb to 2000 direct TYI VORTAC and hold.

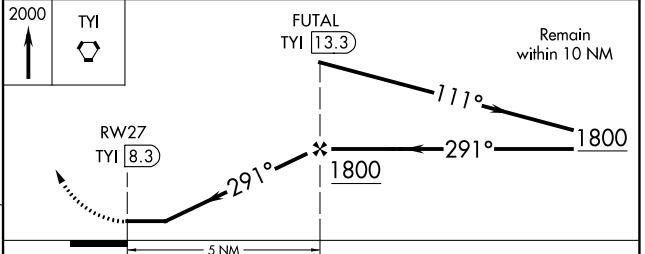
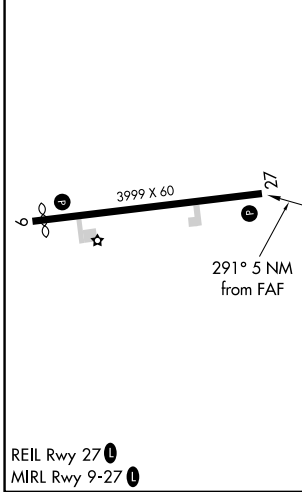
AWOS-3P 119.575	WASHINGTON CENTER 123.85 279.65	CTAF 122.9 0
---------------------------	---	------------------------



SE-2, 22 FEB 2024 to 21 MAR 2024

SE-2, 22 FEB 2024 to 21 MAR 2024

ELEV 53	TDZE 50
---------	---------



CATEGORY	A	B	C	D
S-27	860-1 810 (900-1)	860-1¼ 810 (900-1¼)	860-2¼ 810 (900-2¼)	860-2½ 810 (900-2½)
CIRCLING	860-1 807 (900-1)	860-1¼ 807 (900-1¼)	860-2¼ 807 (900-2¼)	920-2¾ 867 (900-2¾)
RALEIGH-DURHAM ALTIMETER SETTING MINIMUMS				
S-27	1080-1¼ 1030 (1100-1¼)	1080-1½ 1030 (1100-1½)	1080-3	1030 (1100-3)
CIRCLING	1080-1¼ 1027 (1100-1¼)	1080-1½ 1027 (1100-1½)	1080-3	1140-3 1087 (1100-3)

TAKEOFF MINIMUMS (OBSTACLE) DEPARTURE PROCEDURES, AND DIVERSE VECTOR AREA (RADAR VECTORS)

24025

INSTRUMENT APPROACH PROCEDURE CHARTS



IFR TAKEOFF MINIMUMS AND (OBSTACLE) DEPARTURE PROCEDURES

Civil Airports and Selected Military Airports

ALL USERS: Airports that have Departure Procedures (DPs) designed specifically to assist pilots in avoiding obstacles during the climb to the minimum enroute altitude, and/or airports that have civil IFR takeoff minimums other than standard, are listed below. Takeoff Minimums and Departure Procedures apply to all runways unless otherwise specified. An entry may also be listed that contains only Takeoff Obstacle Notes. Altitudes, unless otherwise indicated, are minimum altitudes in MSL.

DPs specifically designed for obstacle avoidance are referred to as Obstacle Departure Procedures (ODPs) and are textually described below, or published separately as a graphic procedure. If the ODP is published as a graphic procedure, its name will be listed below, and it can be found in either this volume (civil), or the applicable military volume, as appropriate. Users will recognize graphic obstacle DPs by the term "(OBSTACLE)" included in the procedure title; e.g., TETON TWO (OBSTACLE). If not specifically assigned an ODP, SID, or RADAR vector as part of an IFR clearance, an ODP may be required to be flown for obstacle clearance, even though not specifically stated in the IFR clearance. When doing so in this manner, ATC should be informed when the ODP being used contains a specified route to be flown, restrictions before turning, and/or altitude restrictions.

Some ODPs, which are established solely for obstacle avoidance, require a climb in visual conditions to cross the airport, a fix, or a NAVAID in a specified direction, at or above a specified altitude. These procedures are called Visual Climb Over Airport (VCOA). To ensure safe and efficient operations, the pilot must verbally request approval from ATC to fly the VCOA when requesting their IFR clearance.

At some locations where an ODP has been established, a diverse vector area (DVA) may be created to allow RADAR vectors to be used in lieu of an ODP. DVA information will state that headings will be as assigned by ATC and climb gradients, when applicable, will be published immediately following the specified departure procedure.

Graphic DPs designed by ATC to standardize traffic flows, ensure aircraft separation and enhance capacity are referred to as "Standard Instrument Departures (SIDs)". SIDs also provide obstacle clearance and are published under the appropriate airport section. ATC clearance must be received prior to flying a SID.

CIVIL USERS NOTE: Title 14 Code of Federal Regulations Part 91 prescribes standard takeoff rules and establishes takeoff minimums for certain operators as follows: (1) For aircraft, other than helicopters, having two engines or less – one statute mile visibility. (2) For aircraft having more than two engines – one-half statute mile visibility. (3) For helicopters – one-half statute mile visibility. These standard minima apply in the absence of any different minima listed below.

MILITARY USERS NOTE: Civil (nonstandard) takeoff minima are published below. For military takeoff minima, refer to appropriate service directives.

AHOSKIE, NC

TRI-COUNTY AT HENRY JOYNER FLD (ASJ)

TAKEOFF MINIMUMS AND (OBSTACLE) DEPARTURE PROCEDURES

ORIG 05MAY11 (22195) (FAA)

TAKEOFF OBSTACLE NOTES:

Rwy 1, trees beginning at DER, 219' left of centerline, up to 100' AGL/169' MSL.

Vehicles on road beginning 206' from DER, 443' left of centerline, up to 10' AGL/79' MSL.

Trees beginning 457' from DER, 461' right of centerline, up to 100' AGL/169' MSL.

Power lines beginning 5130' from DER, 1827' right of centerline, up to 150' AGL/219' MSL.

Rwy 19, vehicles on road 234' from DER, 502' right of centerline, up to 10' AGL/79' MSL.

Vehicles on road beginning 244' from DER, left and right of centerline, up to 15' AGL/84' MSL.

Trees beginning 717' from DER, 626' right of centerline, up to 100' AGL/169' MSL.

Trees beginning 277' from DER, 244' left of centerline, up to 100' AGL/169' MSL.

AIKEN, SC

AIKEN RGNL (AIK)

TAKEOFF MINIMUMS AND (OBSTACLE) DEPARTURE PROCEDURES

AMDT 1A 29MAR18 (18088) (FAA)

TAKEOFF MINIMUMS:

Rwy 1, 200-1¼ or std. w/ min. climb of 220' per NM to 800, or alternatively, with std. takeoff minimums and a normal 200' per NM climb gradient, takeoff must occur no later than 1400 feet prior to DER.

DEPARTURE PROCEDURE:

Rwy 19, climb heading 186° to 1100 before turning west.

TAKEOFF OBSTACLE NOTES:

Rwy 1, terrain 74' from DER, 9' left of centerline, 496' MSL.

Trees beginning 169' from DER, 35' left of centerline, up to 100' AGL/659' MSL.

Tree 6023' from DER, 1609' left of centerline, up to 100' AGL/649' MSL.

Terrain beginning 75' from DER, 246' right of centerline up to 496' MSL.

Trees beginning 1322' from DER, 241' right of centerline, up to 100' AGL/609' MSL.

Rwy 7, terrain beginning 51' from DER, 207' right of centerline up to 499' MSL.

Trees beginning 1230' from DER, 550' right of centerline, up to 100' AGL/609' MSL.

Trees beginning 1601' from DER, 731' left of centerline, up to 56' AGL/563' MSL.

Rwy 19, trees beginning abeam DER, 110' right of centerline, up to 100' AGL/629' MSL.

Trees beginning 6' from DER, 82' left of centerline, up to 100' AGL/639' MSL.

Rwy 25, tree 1244' from DER, 766' right of centerline, 73' AGL/572' MSL.

Tree 1506' from DER, 661' left of centerline, 72' AGL/561' MSL.

TAKEOFF MINIMUMS (OBSTACLE) DEPARTURE PROCEDURES, AND DIVERSE VECTOR AREA (RADAR VECTORS)

24025

TAKEOFF MINIMUMS (OBSTACLE) DEPARTURE PROCEDURES, AND DIVERSE VECTOR AREA (RADAR VECTORS)

24025

ALBEMARLE, NC

STANLY COUNTY (VUJ)

TAKEOFF MINIMUMS AND (OBSTACLE) DEPARTURE PROCEDURES

AMDT 1A 18MAY23 (23138) (FAA)

TAKEOFF MINIMUMS:

Rwys 4L, 22R, NA-VFR runway.

Rwy 4R, 300-1 $\frac{1}{4}$ or std. w/min. climb of 315' per NM to 1000.

TAKEOFF OBSTACLE NOTES:

Rwy 4R, light poles 10' from DER, 29' right of centerline, 1' AGL/578' MSL.

Trees beginning 441' from DER, 263' left of centerline, up to 19' AGL/594' MSL.

Vehicle on road 1162' from DER, 798' left of centerline, 15' AGL/619' MSL.

Tree 1252' from DER, 826' right of centerline, 622' MSL.

Vehicle on road 1323' from DER, 738' left of centerline, up to 617' MSL.

Vehicle on road 1495' from DER, 674' left of centerline, 15' AGL/626' MSL.

Tree 1542' from DER, 836' right of centerline, 630' MSL.

Vehicle on road beginning 1569' from DER, 627' left of centerline, 15' AGL/626' MSL.

Trees beginning 1666' from DER, 789' right of centerline, up to 633' MSL.

Vehicle on road beginning 1676' from DER, 596' left of centerline, 15' AGL/622' MSL.

Trees beginning 1797' from DER, 815' right of centerline, up to 641' MSL.

Tree 1863' from DER, 981' right of centerline, 642' MSL.

Tree 2699' from DER, 1121' right of centerline, 657' MSL.

Trees beginning 2778' from DER, 1105' right of centerline, up to 674' MSL.

Tree 2779' from DER, 1177' left of centerline, 657' MSL.

Tree, terrain beginning 3181' from DER, 1086' left of centerline, up to 16' AGL/665' MSL.

Trees beginning 3301' from DER, 892' right of centerline, up to 679' MSL.

Tree 3394' from DER, 983' left of centerline, 38' AGL/671' MSL.

Trees beginning 3408' from DER, 839' left of centerline, up to 688' MSL.

Tree 3446' from DER, 1372' right of centerline, 682' MSL.

Trees beginning 3446' from DER, on centerline, up to 95' AGL/685' MSL.

Trees beginning 3583' from DER, 655' left of centerline, up to 695' MSL.

Trees beginning 3736' from DER, 1054' left of centerline, up to 704' MSL.

Trees beginning 3888' from DER, 1126' left of centerline, up to 69' AGL/705' MSL.

Trees beginning 3917' from DER, 1095' left of centerline, up to 721' MSL.

Trees beginning 3981' from DER, 34' left of centerline, up to 732' MSL.

Trees beginning 4139' from DER, 360' right of centerline, up to 93' AGL/701' MSL.

Tree 5835' from DER, 2003' left of centerline, 743' MSL.

Tree 1 NM from DER, 2135' left of centerline, 794' MSL.

Trees beginning 1 NM from DER, 2063' left of centerline, up to 803' MSL.

Pole, trees beginning 1 NM from DER, 1763' left of centerline, up to 80' AGL/804' MSL.

Trees beginning 1.1 NM from DER, 1910' left of centerline, up to 808' MSL.

Trees beginning 1.2 NM from DER, 1809' left of centerline, up to 820' MSL.

Tree 1.3 NM from DER, 2379' left of centerline, 790' MSL.

Rwy 22L, tree 10' from DER, 471' right of centerline, 614' MSL.

Trees, vehicles on road beginning 155' from DER, 404' right of centerline, up to 47' AGL/647' MSL.

Trees beginning 557' from DER, 97' right of centerline, up to 93' AGL/684' MSL.

Tree 1007' from DER, 755' left of centerline, 643' MSL.

Trees beginning 1551' from DER, 801' left of centerline, up to 659' MSL.

Trees beginning 1742' from DER, 944' left of centerline, up to 660' MSL.

Tree 1931' from DER, 860' left of centerline, 669' MSL.

Trees beginning 2363' from DER, 50' right of centerline, up to 102' AGL/690' MSL.

ALLENDALE, SC

ALLENDALE COUNTY (AQX)

TAKEOFF MINIMUMS AND (OBSTACLE) DEPARTURE PROCEDURES

AMDT 1 17OCT13 (13290) (FAA)

TAKEOFF OBSTACLE NOTES:

Rwy 17, trees beginning 11' from DER, 366' right of centerline, up to 100' AGL/222' MSL.

Vehicles on roadway beginning 293' from DER, 558' left of centerline, up to 15' AGL/164' MSL.

Trees 342' from DER, 577' left of centerline, up to 100' AGL/214' MSL.

Trees beginning 1962' from DER, 603' left of centerline, up to 100' AGL/246' MSL.

Rwy 35, trees beginning 38' from DER, 306' right of centerline, up to 100' AGL/269' MSL.

Trees beginning 95' from DER, 324' left of centerline, up to 100' AGL/289' MSL.

TAKEOFF MINIMUMS (OBSTACLE) DEPARTURE PROCEDURES, AND DIVERSE VECTOR AREA (RADAR VECTORS)

24025

TAKEOFF MINIMUMS (OBSTACLE) DEPARTURE PROCEDURES, AND DIVERSE VECTOR AREA (RADAR VECTORS)

24025

ANDERSON, SC

ANDERSON RGNL (AND)

TAKEOFF MINIMUMS AND (OBSTACLE) DEPARTURE PROCEDURES

ORIG 18JAN07 (07018) (FAA)

TAKEOFF OBSTACLE NOTES:

Rwy 5, multiple trees beginning 1282' from DER, 172' right of centerline, up to 93' AGL/879' MSL.

Multiple trees beginning 85' from DER, 299' left of centerline, up to 89' AGL/878' MSL.

Rwy 17, multiple trees beginning 1017' from DER, 25' right of centerline, up to 73' AGL/800' MSL.

Multiple trees beginning 3' from DER, 47' left of centerline, up to 77' AGL/820' MSL.

Rwy 23, transmission line tower and multiple trees beginning 1186' from DER, 552' left of centerline, up to 100' AGL/890' MSL.

Rwy 35, multiple trees beginning 131' from DER, 279' right of centerline, up to 87' AGL/854' MSL.

Ceilorometer and tree beginning 257' from DER, 319' left of centerline, up to 73' AGL/820' MSL.

ANDREWS, NC

WESTERN CAROLINA RGNL (RHP)

TAKEOFF MINIMUMS AND (OBSTACLE) DEPARTURE PROCEDURES

AMD T 2 10AUG23 (23222) (FAA)

TAKEOFF MINIMUMS:

Rwys 8, 26, maximum 180K 3900-3, maximum 210K 4000-3, maximum 250K 4200-3 for VCOA.

VCOA:

All runways, obtain ATC approval for VCOA when requesting IFR clearance. Climb in visual conditions to cross Western Carolina Rgnl airport at or above 5700 before proceeding on course.

NOTE: VCOA NA at night.

ANDREWS, SC

ROBERT F. SWINE (PHH)

TAKEOFF MINIMUMS AND (OBSTACLE) DEPARTURE PROCEDURES

ORIG 03OCT02 (02276) (FAA)

TAKEOFF MINIMUMS:

Rwy 18, 300-1.

Rwy 36, 400-1.

DEPARTURE PROCEDURE:

Rwys 18, 36, climb runway heading to 500 before turning left.

TAKEOFF OBSTACLE NOTES:

Rwy 18, tower 165' from DER, 500' right of centerline, 118' AGL/145' MSL.

Tree 630' from DER, 350' left of centerline, 87' AGL/114' MSL.

Water tank 340' from DER, 1040' right of centerline, 129' AGL/156' MSL.

Rwy 36, tree 60' from DER, 500' left of centerline, 67' AGL/85' MSL.

Tree 10' from DER, 210' right of centerline, 55' AGL/73' MSL.

Tree 10' from DER, 190' left of centerline, 32' AGL/50' MSL.

Tree 720' from DER, 265' right of centerline, 34' AGL/61' MSL.

ASHEBORO, NC

ASHEBORO RGNL (HBI)

TAKEOFF MINIMUMS AND (OBSTACLE) DEPARTURE PROCEDURES

AMD T 2 28NOV02 (02332) (FAA)

TAKEOFF MINIMUMS:

Rwy 3, std. with a min. climb of 230' per NM to 1200.

Rwy 21, 400-2 or std. with a min. climb of 340' per NM to 1200.

DEPARTURE PROCEDURE:

Rwy 21, climb runway heading to 1500 before turning southeast.

22 FEB 2024 to 21 MAR 2024

22 FEB 2024 to 21 MAR 2024

TAKEOFF MINIMUMS (OBSTACLE) DEPARTURE PROCEDURES, AND DIVERSE VECTOR AREA (RADAR VECTORS)

24025

SE-2

TAKEOFF MINIMUMS (OBSTACLE) DEPARTURE PROCEDURES, AND DIVERSE VECTOR AREA (RADAR VECTORS)

24025

ASHEVILLE, NC

ASHEVILLE RGNL (AVL)

TAKEOFF MINIMUMS AND (OBSTACLE) DEPARTURE PROCEDURES

AMDT 1 05NOV20 (20310) (FAA)

TAKEOFF MINIMUMS:

Rwy 17, std. w/min. climb of 250' per NM to 4500 or 3600-3 for VCOA.**Rwy 35**, std. w/min. climb of 390' per NM to 5500 or 3600-3 for VCOA.

DEPARTURE PROCEDURE:

Rwy 17, climb heading 167° to 4500 before proceeding on course.**Rwy 35**, climb heading 347° to 5500 before proceeding on course.

VCOA:

Rwys 17, 35, obtain ATC approval for VCOA when requesting IFR clearance. Climb in visual conditions to cross Asheville Regional airport at or above 5600 before proceeding on course.

NOTE, VCOA NA at night.

TAKEOFF OBSTACLE NOTES:

Rwy 17, lighting 1' from DER, 74' left of centerline, 2111' MSL.

Vehicle on road 141' from DER, 294' left of centerline, 2122' MSL.

Rwy 35, trees beginning 544' from DER, 539' left of centerline, up to 2194' MSL.

Trees beginning 954' from DER, 612' left of centerline, up to 2200' MSL.

Trees, antenna beginning 1199' from DER, 641' left of centerline, up to 2203' MSL.

BAMBERG, SC

BAMBERG COUNTY (99N)

TAKEOFF MINIMUMS AND (OBSTACLE) DEPARTURE PROCEDURES

ORIG-A 11AUG22 (22223) (FAA)

TAKEOFF MINIMUMS:

Rwy 5, 500-2½ or std. w/min. climb of 268' per NM to 800.

TAKEOFF OBSTACLE NOTES:

Rwy 5, trees beginning 50' from DER, 167' right of centerline, up to 100' AGL/327' MSL.

Trees beginning 94' from DER, 16' left of centerline, up to 100' AGL/327' MSL.

Trees beginning 445' from DER, 142' right of centerline, up to 100' AGL/330' MSL.

Trees beginning 489' from DER, 41' left of centerline, up to 100' AGL/330' MSL.

Trees beginning 1016' from DER, 17' right of centerline, up to 100' AGL/333' MSL.

Trees beginning 2069' from DER, 7' left of centerline, up to 100' AGL/333' MSL.

Power lines 2527' from DER, crossing centerline, up to 100' AGL/319' MSL.

Tower 1.9 NM from DER, 2682' right of centerline, 386' AGL/633' MSL.

Rwy 23, trees beginning 35' from DER, 14' left of centerline, up to 100' AGL/310' MSL.

Tree 211' from DER, 160' right of centerline, 100' AGL/310' MSL.

Trees beginning 387' from DER, 10' right of centerline, up to 100' AGL/314' MSL.

BARNWELL, SC

BARNWELL RGNL (BNL)

TAKEOFF MINIMUMS AND (OBSTACLE) DEPARTURE PROCEDURES

AMDT 2 02AUG07 (07214) (FAA)

TAKEOFF MINIMUMS:

Rwy 17, 300-2½ or std. w/ min. climb of 241' per NM to 800.

DEPARTURE PROCEDURE:

Rwy 17, climb heading 165° to 1100 before turning.**Rwy 23**, climb heading 230° to 1100 before turning south.

TAKEOFF OBSTACLE NOTES:

Rwy 5, trees beginning 1959' from DER, 506' right of centerline, up to 100' AGL/329' MSL.

Trees beginning 2458' from DER, 440' left of centerline, up to 100' AGL/359' MSL.

Rwy 17, trees beginning 3225' from DER, 1092' right of centerline, up to 100' AGL/ 339' MSL.

Tower 1.9 NM from DER, 3064' left of centerline, 366' AGL/544' MSL.

Rwy 23, trees beginning 717' from DER, 237' right of centerline, up to 100' AGL/339' MSL.

Trees beginning 971' from DER, 254' left of centerline, 100' AGL/349' MSL.

Tree 2933' from DER, 559' left of centerline, 100' AGL/319' MSL.

Rwy 35, trees beginning 948' from DER, 570' left of centerline, up to 100' AGL/349' MSL.

Trees beginning 2805' from DER, 440' right of centerline, up to 100' AGL/359' MSL.

22 FEB 2024 to 21 MAR 2024

22 FEB 2024 to 21 MAR 2024

TAKEOFF MINIMUMS (OBSTACLE) DEPARTURE PROCEDURES, AND DIVERSE VECTOR AREA (RADAR VECTORS)

24025

SE-2

TAKEOFF MINIMUMS (OBSTACLE) DEPARTURE PROCEDURES, AND DIVERSE VECTOR AREA (RADAR VECTORS)

24025

BEAUFORT, NC

MICHAEL J SMITH FLD (MRH)

TAKEOFF MINIMUMS AND (OBSTACLE) DEPARTURE PROCEDURES

AMDT 4 02MAY13 (22167) (FAA)

TAKEOFF MINIMUMS:

Rwy 21, 300-1 or std. w/min. climb of 740' per NM to 300.

TAKEOFF OBSTACLE NOTES:

Rwy 3, tree 41' from DER, 379' left of centerline, 58' AGL/64' MSL.

Trees beginning 1030' from DER, 351' right of centerline, up to 54' AGL/62' MSL.

Trees beginning 1873' from DER, 21' left of centerline, up to 100' AGL/109' MSL.

Tree 2070' from DER, 106' right of centerline, 80' AGL/86' MSL.

Tree 3039' from DER, 613' right of centerline, 100' AGL/114' MSL.

Rwy 8, trees beginning 447' from DER, 140' left of centerline, up to 31' AGL/51' MSL.

Tree 3609' from DER, 577' left of centerline, 100' AGL/104' MSL.

Rwy 14, trees beginning 148' from DER, left and right of centerline, up to 100' AGL/114' MSL.**Rwy 21**, vehicles on roadway 262' from DER, left and right of centerline, up to 15' AGL/24' MSL.

Trees beginning 475' from DER, 132' right of centerline, up to 100' AGL/104' MSL.

Boats beginning 506' from DER, left and right of centerline, up to 77' AGL/77' MSL.

Tower 2566' from DER, 925' left of centerline, 162' AGL/172' MSL.

Rwy 26, trees beginning 52' from DER, 308' left of centerline, up to 43' AGL/49' MSL.

Building and trees beginning 131' from DER, 417' right of centerline, 18' AGL/24' MSL.

Boats beginning 383' from DER, left and right of centerline, up to 77' AGL/77' MSL.

Rwy 32, trees beginning 30' from DER, 182' left of centerline, up to 100' AGL/104' MSL.

Trees beginning 30' from DER, 419' right of centerline, up to 100' AGL/104' MSL.

Boats beginning 452' from DER, left and right of centerline, up to 77' AGL/77' MSL.

BEAUFORT, SC

BEAUFORT EXEC (ARW)

TAKEOFF MINIMUMS AND (OBSTACLE) DEPARTURE PROCEDURES

AMDT 1 10JUL03 (22195) (FAA)

DEPARTURE PROCEDURE:

Rwy 7, climb runway heading to 1700 before turning right.**Rwy 25**, climb runway heading to 300 before turning right.

TAKEOFF OBSTACLE NOTES:

Rwy 25, tree 1100' from DER, 70' left of centerline, 40' AGL/50' MSL.

Power line 1000' from DER, on centerline, 30' AGL/35' MSL.

BEAUFORT MCAS (MERRITT FLD) (KNBC)

BEAUFORT, SC

TAKEOFF MINIMUMS AND (OBSTACLE) DEPARTURE PROCEDURES

ORIG 10SEP20 (20254)

TAKEOFF OBSTACLE NOTES:

Rwy 5, parked aircraft 1485' from DER, 679' left of cntrn, 38' AGL/51' MSL.**Rwy 14**, bldg 1099' from DER, 842' right of cntrn, 13' AGL/25' MSL.**Rwy 23**, pylon 3113' from DER, 1195' right of cntrn, 69' AGL/122' MSL.

Pylon 3370' from DER, 1050' right of cntrn, 69' AGL/114' MSL.

Pylon 4398' from DER, 1255' left of cntrn, 69' AGL/129' MSL.

Pylon 3514' from DER, 774' right of cntrn, 69' AGL/130' MSL.

Rwy 32, pylon 3700' from DER, 1455' left of cntrn, 69' AGL/121' MSL.

Pylon 3934' from DER, 1356' left of cntrn, 69' AGL/120' MSL.

Pylon 4209' from DER, 1230' left of cntrn, 69' AGL/124' MSL.

Pylon 5017' from DER, 607' left of cntrn, 69' AGL/122' MSL.

BENNETTSVILLE, SC

MARLBORO COUNTY JETPORT-H E AVENT FLD (BBP)

TAKEOFF MINIMUMS AND (OBSTACLE) DEPARTURE PROCEDURES

AMDT 1 29JUL10 (22195) (FAA)

TAKEOFF OBSTACLE NOTES:

Rwy 7, pole 97' from DER, 379' right of centerline, 35' AGL/181' MSL.

Trees beginning 1415' from DER, 412' left of centerline, up to 86' AGL/232' MSL.

Trees beginning 2495' from DER, 256' right of centerline, up to 89' AGL/235' MSL.

Rwy 25, tree 77' from DER, 148' right of centerline, 18' AGL/156' MSL.

Trees beginning 2681' from DER, 382' right of centerline, up to 89' AGL/227' MSL.

TAKEOFF MINIMUMS (OBSTACLE) DEPARTURE PROCEDURES, AND DIVERSE VECTOR AREA (RADAR VECTORS)

24025

TAKEOFF MINIMUMS (OBSTACLE) DEPARTURE PROCEDURES, AND DIVERSE VECTOR AREA (RADAR VECTORS)

24025

BURLINGTON, NC

BURLINGTON/ALAMANCE RGNL (BUY)

TAKEOFF MINIMUMS AND (OBSTACLE) DEPARTURE PROCEDURES

AMDT 1 06FEB14 (21336) (FAA)

TAKEOFF MINIMUMS:

Rwy 6, 300-3 or std. w/ min. climb of 285' per NM to 900.

DEPARTURE PROCEDURE:

Rwy 6, climb heading 060° to 1500 before turning.

Rwy 24, climb heading 240° to 1500 before turning.

TAKEOFF OBSTACLE NOTES:

Rwy 6, trees, antenna, transmission towers, communications towers, tank and poles left and right of centerline beginning 158' from DER, 482' right of centerline up to 163' AGL/785' MSL.

Rwy 24, trees, pole and runway 6 REILS left and right of centerline beginning 10' from DER, 125' left and right of centerline up to 100' AGL/676' MSL.

CAMDEN, SC

WOODWARD FLD (CDN)

TAKEOFF MINIMUMS AND (OBSTACLE) DEPARTURE PROCEDURES

AMDT 1 25OCT07 (21140) (FAA)

TAKEOFF MINIMUMS:

Rwy 6, 200-1¼ or std. w/min. climb of 362' per NM to 700.

TAKEOFF OBSTACLE NOTES:

Rwy 6, light 184' from DER, 500' right of centerline, 27' AGL/316' MSL.

Trees beginning 867' from DER, 113' right of centerline, up to 83' AGL/373' MSL.

Trees beginning 736' from DER, 256' left of centerline, up to 100' AGL/419' MSL.

Water tank 5407' from DER, 1852' left of centerline, 168' AGL/487' MSL.

Rwy 14, trees and terrain beginning 90' from DER, 68' left of centerline, up to 100' AGL/409' MSL.

Trees and terrain beginning 159' from DER, 148' right of centerline, up to 100' AGL/399' MSL.

Rwy 24, trees beginning 137' from DER, 413' right of centerline, up to 100' AGL/338' MSL.

Trees beginning 234' from DER, 389' left of centerline, up to 100' AGL/347' MSL.

Rwy 32, trees beginning 3059' from DER, 455' right of centerline, up to 100' AGL/449' MSL.

Tree 5066' from DER, 858' left of centerline, 100' AGL/429' MSL.

CHARLESTON, SC

CHARLESTON AFB/INTL (CHS)

TAKEOFF MINIMUMS AND (OBSTACLE) DEPARTURE PROCEDURES

AMDT 7 25AUG11 (11237) (FAA)

TAKEOFF OBSTACLE NOTES:

Rwy 3, electrical equipment, towers, and trees beginning 98' from DER, 409' right of centerline, up to 104' AGL/136' MSL. Tree 2653' from DER, 993' left of centerline, 100' AGL/139' MSL.

Rwy 15, trees beginning 1297' from DER, 772' left of centerline, up to 100' AGL/119' MSL.

Rwy 33, trees beginning 2190' from DER, 1002' right of centerline, up to 100' AGL/139' MSL.

Trees beginning 3061' from DER, 1284' left of centerline, up to 100' AGL/144' MSL.

CHARLESTON EXEC (JZI)

TAKEOFF MINIMUMS AND (OBSTACLE) DEPARTURE PROCEDURES

AMDT 1A 07JAN16 (21168) (FAA)

DEPARTURE PROCEDURE:

Rwy 22, climb heading 217° to 600 before turning right.

TAKEOFF OBSTACLE NOTES:

Rwy 4, trees beginning 2473' from DER, 530' left of centerline, up to 75' AGL/85' MSL.

Rwy 9, antenna 110' from DER, 444' left of centerline, 39' AGL/47' MSL.

Rwy 22, trees 502' from DER, 181' right of centerline, up to 100' AGL/109' MSL.

Trees beginning 2183' from DER, left to right of centerline up to 100' AGL/109' MSL.

Rwy 27, trees beginning 779' from DER, 84' left of centerline, up to 77' AGL/96' MSL.

Pole 1011' from DER, 585' left of centerline, 42' AGL/61' MSL.

Trees beginning 90' from DER, 273' right of centerline, up to 60' AGL/78' MSL.

22 FEB 2024 to 21 MAR 2024

22 FEB 2024 to 21 MAR 2024

TAKEOFF MINIMUMS (OBSTACLE) DEPARTURE PROCEDURES, AND DIVERSE VECTOR AREA (RADAR VECTORS)

24025

SE-2


**TAKEOFF MINIMUMS (OBSTACLE) DEPARTURE PROCEDURES, AND
DIVERSE VECTOR AREA (RADAR VECTORS)**


24025

CHARLOTTE, NC**CHARLOTTE/DOUGLAS INTL (CLT)****TAKEOFF MINIMUMS AND (OBSTACLE) DEPARTURE PROCEDURES**

AMDT 8 03NOV22 (22307) (FAA)

DEPARTURE PROCEDURE:**Rwy 5**, climb on heading 055° to 1700 before turning right.**Rwy 18C**, climb on heading 183° to 1200 before turning left.**Rwy 23**, climb on heading 235° to 1200 before turning left.**Rwy 36C**, climb on heading 003° to 1400 before turning left.**Rwy 36L**, climb on heading 003° to 1800 before turning left.**TAKEOFF OBSTACLE NOTES:****Rwy 5**, tree 811' from DER, 677' right of centerline, 768' MSL.

Tree 1031' from DER, 665' left of centerline, 773' MSL.

Tree 1050' from DER, 755' left of centerline, 787' MSL.

Tree 1894' from DER, 855' left of centerline, 799' MSL.

Trees beginning 2089' from DER, 877' left of centerline, up to 821' MSL.

Trees beginning 2437' from DER, 972' left of centerline, up to 822' MSL.

Tree 2582' from DER, 1057' left of centerline, 843' MSL.

Trees beginning 2608' from DER, 1107' left of centerline, up to 848' MSL.

Rwy 18C, lighting 11' from DER, 85' left of centerline, 4' AGL/695' MSL.

Tree 556' from DER, 564' left of centerline, 711' MSL.

Tree 1059' from DER, 761' right of centerline, 729' MSL.

Trees beginning 1184' from DER, 609' left of centerline, up to 746' MSL.

Tree 1478' from DER, 828' right of centerline, 736' MSL.

Trees beginning 1478' from DER, 517' left of centerline, up to 757' MSL.

Tree 1721' from DER, 862' right of centerline, 748' MSL.

Tree 1811' from DER, 967' right of centerline, 751' MSL.

Tree 2035' from DER, 1025' left of centerline, 764' MSL.

Trees beginning 2058' from DER, 381' left of centerline, up to 771' MSL.

Trees beginning 2361' from DER, 732' right of centerline, up to 755' MSL.

Tree 2389' from DER, 612' right of centerline, 759' MSL.

Tree 2723' from DER, 971' left of centerline, 773' MSL.

Tree 2779' from DER, 861' right of centerline, 762' MSL.

Trees beginning 3246' from DER, 793' right of centerline, up to 792' MSL.

Trees beginning 3498' from DER, 1014' left of centerline, up to 791' MSL.

Tree 4181' from DER, 1430' right of centerline, 797' MSL.

Tree 4226' from DER, 1528' right of centerline, 798' MSL.

Tree 4249' from DER, 1038' right of centerline, 805' MSL.

Trees beginning 5354' from DER, 1792' right of centerline, up to 831' MSL.

Tree 5581' from DER, 1599' right of centerline, 837' MSL.

Tree 5749' from DER, 1490' right of centerline, 838' MSL.

Trees beginning 5851' from DER, 1412' right of centerline, up to 100' AGL/841' MSL.

Rwy 18L, lighting 9' from DER, 1' left of centerline, 3' AGL/726' MSL.

Pole 980' from DER, 709' left of centerline, 64' AGL/763' MSL.

Tower 980' from DER, 709' left of centerline, 765' MSL.

Trees beginning 1057' from DER, 689' right of centerline, up to 759' MSL.

Tree 1234' from DER, 795' right of centerline, 767' MSL.

Trees beginning 1457' from DER, 703' right of centerline, up to 777' MSL.

Tree 2248' from DER, 815' right of centerline, 783' MSL.

Tree 2844' from DER, 1171' right of centerline, 796' MSL.

Tower 4408' from DER, 1505' left of centerline, 160' AGL/849' MSL.

Rwy 18R, lighting 10' from DER, 4' left of centerline, 3' AGL/746' MSL.

Terrain 145' from DER, 521' left of centerline, 748' MSL.

Rwy 23, lighting 1' from DER, 0' of centerline, 706' MSL.

Tree 1270' from DER, 773' right of centerline, 742' MSL.

Tree 1310' from DER, 772' right of centerline, 753' MSL.

Tree 1477' from DER, 703' right of centerline, 757' MSL.

Trees beginning 1573' from DER, 655' right of centerline, up to 758' MSL.

Trees beginning 1728' from DER, 542' right of centerline, up to 762' MSL.

Trees beginning 1814' from DER, 598' right of centerline, up to 775' MSL.

Tree 1844' from DER, 806' right of centerline, 776' MSL.

Trees beginning 1944' from DER, 698' right of centerline, up to 792' MSL.

Trees beginning 2242' from DER, 621' right of centerline, up to 811' MSL.

Tree 3744' from DER, 503' left of centerline, 102' AGL/802' MSL.

Rwy 36C, lighting 5' from DER, 11' left of centerline, 1' AGL/743' MSL.

Trees beginning 1246' from DER, 404' right of centerline, up to 822' MSL.

Tree 1605' from DER, 833' left of centerline, 797' MSL.

Trees beginning 1937' from DER, 512' left of centerline, up to 823' MSL.

Trees beginning 2045' from DER, 553' left of centerline, up to 827' MSL.

Trees beginning 2794' from DER, 237' right of centerline, up to 825' MSL.

Rwy 36L, lighting 9' from DER, 3' left of centerline, 2' AGL/745' MSL.

Tree 1355' from DER, 544' left of centerline, 786' MSL.

CON'T

22 FEB 2024 to 21 MAR 2024

22 FEB 2024 to 21 MAR 2024


**TAKEOFF MINIMUMS (OBSTACLE) DEPARTURE PROCEDURES, AND
DIVERSE VECTOR AREA (RADAR VECTORS)**


24025

TAKEOFF MINIMUMS (OBSTACLE) DEPARTURE PROCEDURES, AND DIVERSE VECTOR AREA (RADAR VECTORS)

24025

CHARLOTTE, NC (CON'T)

CHARLOTTE/DOUGLAS INTL (CLT) (CON'T)

Rwy 36R, sign 19' from DER, 288' right of centerline, 6' AGL/747' MSL.
 Trees beginning 470' from DER, 474' right of centerline, up to 767' MSL.
 Tree, traverse_way beginning 640' from DER, 93' right of centerline, up to 775' MSL.
 Pole, tree beginning 837' from DER, 500' right of centerline, up to 777' MSL.
 Tree 944' from DER, 650' left of centerline, 771' MSL.
 Pole 1005' from DER, 739' left of centerline, 774' MSL.
 Trees beginning 1058' from DER, 346' right of centerline, up to 779' MSL.
 Pole 1191' from DER, 769' left of centerline, 778' MSL.
 Tree 1279' from DER, 625' right of centerline, 780' MSL.
 Tree 1295' from DER, 586' left of centerline, 782' MSL.
 Tree 1397' from DER, 646' right of centerline, 784' MSL.
 Tree 1477' from DER, 851' left of centerline, 785' MSL.
 Tree 1613' from DER, 731' right of centerline, 787' MSL.
 Tree, pole beginning 1652' from DER, 718' right of centerline, up to 809' MSL.
 Trees beginning 1725' from DER, 557' right of centerline, up to 816' MSL.
 Trees beginning 1874' from DER, 0' of centerline, up to 820' MSL.
 Trees beginning 2021' from DER, 1' left of centerline, up to 55' AGL/804' MSL.
 Tree 2035' from DER, 59' left of centerline, 58' AGL/805' MSL.
 Tree 2054' from DER, 91' left of centerline, 59' AGL/807' MSL.
 Trees beginning 2070' from DER, 41' left of centerline, up to 72' AGL/815' MSL.
 Trees beginning 2132' from DER, 325' left of centerline, up to 823' MSL.
 Tree 2458' from DER, 920' left of centerline, 830' MSL.
 Tower 3686' from DER, 1159' right of centerline, 70' AGL/844' MSL.
 Tree 3737' from DER, 393' left of centerline, 91' AGL/843' MSL.
 Tree 3756' from DER, 530' right of centerline, 846' MSL.
 Trees beginning 3760' from DER, 433' left of centerline, up to 851' MSL.
 Trees beginning 3775' from DER, 577' right of centerline, up to 852' MSL.
 Trees beginning 3875' from DER, 394' left of centerline, up to 93' AGL/852' MSL.
 Trees beginning 3909' from DER, 355' left of centerline, up to 857' MSL.
 Trees beginning 4262' from DER, 439' left of centerline, up to 96' AGL/858' MSL.
 Trees beginning 4309' from DER, 171' left of centerline, up to 93' AGL/859' MSL.

CHERAW, SC

CHERAW MUNI/LYNCH BELLINGER FLD (CQW)

TAKEOFF MINIMUMS AND (OBSTACLE) DEPARTURE PROCEDURES

AMDT 1 15MAR07 (22195) (FAA)

TAKEOFF OBSTACLE NOTES:

Rwy 8, multiple trees 465' from DER, 176' right of centerline, up to 100' AGL/279' MSL.
 Power lines 845' from DER, 501' left of centerline, 65' AGL/243' MSL.
 Multiple trees 2407' from DER, 11' left of centerline, up to 100' AGL/279' MSL.
Rwy 26, trees 1089' from DER, 213' left of centerline, up to 100' AGL/389' MSL.
 Trees 1467' from DER, 63' right of centerline, up to 100' AGL/379' MSL.
 Power lines 2066' from DER, 186' right of centerline, 65' AGL/243' MSL.

CHERRY POINT MCAS (CUNNINGHAM FLD) (KNKT)

CHERRY POINT, NC

TAKEOFF MINIMUMS AND (OBSTACLE) DEPARTURE PROCEDURES

AMDT 1 02NOV23 (23306) (USN)

DEPARTURE PROCEDURE:

Rwys 5R, 14L, 23R, 32L, diverse departures NA.

TAKEOFF OBSTACLE NOTES:

Rwy 32R, terrain 0' from DER, 500' left of centerline, 22' MSL.

22 FEB 2024 to 21 MAR 2024

22 FEB 2024 to 21 MAR 2024

TAKEOFF MINIMUMS (OBSTACLE) DEPARTURE PROCEDURES, AND DIVERSE VECTOR AREA (RADAR VECTORS)

24025

SE-2

TAKEOFF MINIMUMS (OBSTACLE) DEPARTURE PROCEDURES, AND DIVERSE VECTOR AREA (RADAR VECTORS)

24025

CHESTER, SC

CHESTER CATAWBA RGNL (DCM)

TAKEOFF MINIMUMS AND (OBSTACLE) DEPARTURE PROCEDURES

ORIG 15JAN09 (09015) (FAA)

TAKEOFF OBSTACLE NOTES:

Rwy 5, trees beginning 383' from DER, 180' left of centerline up to 100' AGL/719' MSL.

Rwy 17, trees beginning 54' from DER, 289' left of centerline up to 100' AGL/739' MSL.

Trees beginning 164' from DER, 291' right of centerline up to 100' AGL/739' MSL.

Rwy 23, trees beginning 163' from DER, 379' right of centerline up to 100' AGL/729' MSL.

Trees beginning 3229' from DER, 726' left of centerline up to 100' AGL/779' MSL.

Rwy 35, vehicle on road 761' from DER, 684' left of centerline up to 15' AGL/774' MSL.

Trees beginning 321' from DER, 684' right of centerline up to 100' AGL/761' MSL.

CLEMSON, SC

OCONEE COUNTY RGNL (CEU)

TAKEOFF MINIMUMS AND (OBSTACLE) DEPARTURE PROCEDURES

AMDT 3 17NOV11 (11321) (FAA)

DEPARTURE PROCEDURE:

Rwy 25, climb heading 253° to 1900 before turning right.

TAKEOFF OBSTACLE NOTES:

Rwy 7, trees beginning 8' from DER, 310' left of centerline, up to 35' AGL/909' MSL.

Trees beginning 87' from DER, 93' right of centerline, up to 100' AGL/979' MSL.

Rwy 25, trees beginning 109' from DER, 6' right of centerline, up to 100' AGL/979' MSL.

Trees beginning 123' from DER, 8' left of centerline, up to 83' AGL/971' MSL.

Multiple poles beginning 457' from DER, left and right of centerline, up to 48' AGL/936' MSL.

CLINTON, NC

CLINTON-SAMPSON COUNTY (CTZ)

TAKEOFF MINIMUMS AND (OBSTACLE) DEPARTURE PROCEDURES

AMDT 2 05MAY11 (11125) (FAA)

TAKEOFF OBSTACLE NOTES:

Rwy 6, trees 10' from DER, 393' right of centerline, up to 116' AGL/245' MSL.

Trees 1306' from DER, 9' left of centerline, up to 100' AGL/269' MSL.

Rwy 24, trees 14' from DER, 3' right of centerline, up to 99' AGL/188' MSL.

Tree 1718' from DER, 891' left of centerline, 100' AGL/219' MSL.

COLUMBIA, SC

COLUMBIA METRO (CAE)

TAKEOFF MINIMUMS AND (OBSTACLE) DEPARTURE PROCEDURES

AMDT 1 27AUG09 (21168) (FAA)

TAKEOFF OBSTACLE NOTES:

Rwy 5, trees beginning 127' from DER, 128' left of centerline, up to 97' AGL/286' MSL.

Trees beginning 420' from DER, 21' right of centerline, up to 74' AGL/283' MSL.

Rwy 11, trees beginning 1896' from DER, 621' left of centerline, up to 48' AGL/277' MSL.

Light pole and trees beginning 1043' from DER, 723' right of centerline, up to 69' AGL/268' MSL.

Rwy 23, trees 3573' from DER, 1191' right of centerline, up to 60' AGL/329' MSL.

Rwy 29, trees beginning 567' from DER, 535' left of centerline, up to 87' AGL/286' MSL.

Trees beginning 1045' from DER, 526' right of centerline, up to 63' AGL/332' MSL.

JIM HAMILTON L B OWENS (CUB)

TAKEOFF MINIMUMS AND (OBSTACLE) DEPARTURE PROCEDURES

AMDT 3 19NOV09 (09323) (FAA)

TAKEOFF MINIMUMS:

Rwy 31, 600-2½ or std. with min. climb of 345' per NM to 1000.

DEPARTURE PROCEDURE:

Rwy 31, climb heading 311° to 1500 before turning Northbound.

TAKEOFF OBSTACLE NOTES:

Rwy 13, trains beginning at DER, 138' right of centerline, up to 23' AGL/202' MSL.

Trees beginning 3' from DER, 88' right of centerline, up to 106' AGL/255' MSL.

Trees beginning 131' from DER, 84' left of centerline, up to 97' AGL/256' MSL.

Rwy 31, trains beginning at DER, 437' left of centerline, up to 23' AGL/222' MSL.

Buildings beginning 632' from DER, 260' right of centerline, up to 372' AGL/681' MSL.

Buildings beginning 1050' from DER, 20' left of centerline, up to 50' AGL/252' MSL.

Tower 2.1 NM from DER, 3510' right of centerline, 422' AGL/747' MSL.

22 FEB 2024 to 21 MAR 2024

22 FEB 2024 to 21 MAR 2024

TAKEOFF MINIMUMS (OBSTACLE) DEPARTURE PROCEDURES, AND DIVERSE VECTOR AREA (RADAR VECTORS)

24025

SE-2

TAKEOFF MINIMUMS (OBSTACLE) DEPARTURE PROCEDURES, AND DIVERSE VECTOR AREA (RADAR VECTORS)

24025

CONCORD, NC

CONCORD-PADGETT RGNL (JQF)

TAKEOFF MINIMUMS AND (OBSTACLE) DEPARTURE PROCEDURES

AMDT 3A 03JAN19 (19003) (FAA)

TAKEOFF MINIMUMS:

Rwy 20, 300-1¼ or std. w/min. climb of 204' per NM to 1000, or alternatively, with standard takeoff minimums and a normal 200' per NM climb gradient, takeoff must occur no later than 1200' prior to DER.

DEPARTURE PROCEDURE:

Rwy 2, climb heading 016° to 2200 before proceeding on course.

Rwy 20, climbing right turn heading 290° to intercept CLT VOR/DME R-039 outbound to 2100 before proceeding on course.

TAKEOFF OBSTACLE NOTES:

Rwy 2, poles and trees beginning 2624' from DER, 688' left of centerline, up to 45' AGL/784' MSL.

Trees beginning 2107' from DER, 787' right of centerline, up to 24' AGL/783' MSL.

Rwy 20, street lights beginning 3047' from DER, 196' right of centerline, up to 105' AGL/744' MSL.

Trees 1.3 NM from DER, 1544' right of centerline, up to 100' AGL/849' MSL.

CONWAY, SC

CONWAY-HORRY COUNTY (HYW)

TAKEOFF MINIMUMS AND (OBSTACLE) DEPARTURE PROCEDURES

AMDT 1A 25AUG11 (11237) (FAA)

TAKEOFF OBSTACLE NOTES:

Rwy 4, trees beginning 58' from DER, 393' left of centerline, up to 108' AGL/147' MSL.

Rwy 22, trees beginning 184' from DER, 184' left of centerline, up to 86' AGL/125' MSL.

Trees beginning 1508' from DER, 212' right of centerline, up to 73' AGL/112' MSL.

CURRITUCK, NC

CURRITUCK COUNTY RGNL (ONX)

TAKEOFF MINIMUMS AND (OBSTACLE) DEPARTURE PROCEDURES

AMDT 1 07MAY09 (09127) (FAA)

DEPARTURE PROCEDURE:

Rwy 5, climb heading 045° to 1300 before proceeding on course.

Rwy 23, climb heading 240° to 4000 before turning southbound.

TAKEOFF OBSTACLE NOTES:

Rwy 5, trees beginning 41' from DER, 166' left of centerline, up to 100' AGL/122' MSL.

Tree 4058' from DER, 388' right of centerline, 100' AGL/124' MSL.

Rwy 23, trees beginning 60' from DER, 384' left of centerline, up to 100' AGL/115' MSL.

Trees beginning 201' from DER, 427' right of centerline, up to 100' AGL/121' MSL.

DARLINGTON, SC

DARLINGTON COUNTY AIRPORT (UDG)

TAKEOFF MINIMUMS AND (OBSTACLE) DEPARTURE PROCEDURES

ORIG-B 28APR16 (16119) (FAA)

TAKEOFF OBSTACLE NOTES:

Rwy 5, multiple trees beginning 11' from DER, 241' left of centerline, up to 97' AGL/246' MSL.

Multiple trees beginning 72' from DER, 29' right of centerline, up to 97' AGL/236' MSL.

Rwy 23, antenna 18' from DER, 263' left of centerline, 9' AGL/194' MSL.

Trees beginning 241' from DER, 394' left of centerline, up to 70' AGL/249' MSL.

Tree 732' from DER, 427' right of centerline, 33' AGL/212' MSL.

DILLON, SC

DILLON COUNTY (DLC)

TAKEOFF MINIMUMS AND (OBSTACLE) DEPARTURE PROCEDURES

AMDT 1 26JUL12 (12208) (FAA)

TAKEOFF MINIMUMS:

Rwy 7, 500-3 or std. w/min. climb of 250' per NM to 700.

DEPARTURE PROCEDURE:

Rwy 7, climb heading 070° to 1400 before turning south.

Rwy 25, climb heading 250° to 1900 before turning south.

TAKEOFF OBSTACLE NOTES:

Rwy 7, trees beginning 77' from DER, 158' left of centerline, up to 100' AGL/214' MSL.

Trees beginning 162' from DER, 494' right of centerline, up to 100' AGL/209' MSL.

Tower 2.3 NM from DER, 2100' left of centerline, 370' AGL/510' MSL.

Rwy 25, vehicles beginning 17' from DER, 313' left of centerline, up to 15' AGL/149' MSL.

Vehicles beginning 28' from DER, 163' right of centerline, up to 15' AGL/149' MSL.

Trees beginning 42' from DER, 256' left of centerline, up to 100' AGL/234' MSL.

Trees beginning 182' from DER, 75' right of centerline, up to 100' AGL/244' MSL.

Vehicles beginning 765' from DER, left and right of centerline, up to 17' AGL/156' MSL.

TAKEOFF MINIMUMS (OBSTACLE) DEPARTURE PROCEDURES, AND DIVERSE VECTOR AREA (RADAR VECTORS)

24025

SE-2

TAKEOFF MINIMUMS (OBSTACLE) DEPARTURE PROCEDURES, AND DIVERSE VECTOR AREA (RADAR VECTORS)

24025

EDENTON, NC

NORTHEASTERN RGNL (EDE)

TAKEOFF MINIMUMS AND (OBSTACLE) DEPARTURE PROCEDURES

ORIG 30JUL09 (09211) (FAA)

TAKEOFF OBSTACLE NOTES:

Rwy 1, trees beginning 23' from DER, left and right of centerline, up to 100' AGL/117' MSL.

Rwy 19, poles beginning 1038' from DER, 567' left of centerline, 37' AGL/47' MSL.

Trees beginning 1258' from DER, left and right of centerline, up to 100' AGL/114' MSL.

ELIZABETH CITY, NC

ELIZABETH CITY CG AIR STATION/RGNL (ECG)

TAKEOFF MINIMUMS AND (OBSTACLE) DEPARTURE PROCEDURES

AMDT 1A 24MAY18 (21168) (FAA)

DEPARTURE PROCEDURE:

When tethered balloon located 2.6 NM south east of airport is flying:

Rwy 1, climb on a heading between 194° CW 110° from DER.

Rwy 10, climb on a heading between 284° CW 110° from DER.

Rwy 19, climb on a heading between 160° CW 014° from DER.

Rwy 28, climb on a heading between 170° CW 103° from DER.

TAKEOFF OBSTACLE NOTES:

Rwy 1, pole 53' from DER, 314' right of centerline, 6' AGL/13' MSL.

Traverse way 515' from DER, 572' right of centerline, 23' MSL.

Tree 1030' from DER, 660' left of centerline, 48' MSL.

Trees beginning 1147' from DER, 641' left of centerline, up to 52' MSL.

Trees beginning 1265' from DER, 765' left of centerline, up to 63' MSL.

Rwy 10, building 7' from DER, 442' right of centerline, 16' MSL.

Tree 108' from DER, 474' right of centerline, 66' AGL/72' MSL.

Trees, traverse way beginning 201' from DER, 148' right of centerline, up to 80' MSL.

NAVAID, traverse way beginning 292' from DER, 330' left of centerline, up to 24' MSL.

Tree 939' from DER, 340' left of centerline, 35' MSL.

Tree 2091' from DER, 485' left of centerline, 71' MSL.

Tree 2139' from DER, 390' left of centerline, 79' MSL.

Trees beginning 2185' from DER, 367' left of centerline, up to 82' MSL.

Rwy 19, traverse way, vegetation, fence beginning 19' from DER, right of centerline, up to 25' MSL.

Terrain 20' from DER, 15' left of centerline, 10' MSL.

Sign 64' from DER, 144' left of centerline, 12' MSL.

Traverse way 478' from DER, 20' left of centerline, 24' MSL.

Pole 961' from DER, 708' left of centerline, 47' MSL.

Poles beginning 1031' from DER, 552' left of centerline, up to 50' MSL.

Poles beginning 1259' from DER, 513' left of centerline, up to 55' MSL.

Spire, tree beginning 1745' from DER, 931' left of centerline, up to 65' MSL.

Tree 1989' from DER, 897' left of centerline, 75' MSL.

Trees beginning 1997' from DER, 699' left of centerline, up to 84' MSL.

Tree 2542' from DER, 1147' left of centerline, 87' MSL.

Tree 2641' from DER, 1039' left of centerline, 91' MSL.

Tree 2642' from DER, 1160' left of centerline, 92' MSL.

Trees beginning 2676' from DER, 1077' left of centerline, up to 101' MSL.

Trees beginning 2747' from DER, 991' left of centerline, up to 106' MSL.

Trees beginning 3202' from DER, 1146' left of centerline, up to 107' MSL.

Rwy 28, lighting 25' from DER, 130' left and right of centerline, 3' AGL/12' MSL.

Traverse way beginning 394' from DER, 393' right of centerline, up to 23' MSL.

Tree 2902' from DER, 881' right of centerline, 87' MSL. x

Tree 2961' from DER, 1199' right of centerline, 88' MSL.

Tree 3124' from DER, 812' right of centerline, 91' MSL.

Tree 3475' from DER, 1339' right of centerline, 103' MSL.

Tree 3541' from DER, 1437' right of centerline, 105' MSL.

ELIZABETHTOWN, NC

CURTIS L BROWN JR FLD (EYF)

TAKEOFF MINIMUMS AND (OBSTACLE) DEPARTURE PROCEDURES

ORIG 02JUL09 (22195) (FAA)

DEPARTURE PROCEDURE:

Rwy 15, climb heading 152° to 2100 before turning left.

Rwy 33, climb heading 332° to 1100 before proceeding on course.

TAKEOFF OBSTACLE NOTES:

Rwy 15, trees beginning 368' from DER, left and right of centerline, up to 100' AGL/214' MSL.

Rwy 33, vehicle on road 177' from DER, 543' right of centerline, 15' AGL/144' MSL.

Trees beginning 344' from DER, left and right of centerline, up to 100' AGL/229' MSL.

TAKEOFF MINIMUMS (OBSTACLE) DEPARTURE PROCEDURES, AND DIVERSE VECTOR AREA (RADAR VECTORS)

24025

SE-2

22 FEB 2024 to 21 MAR 2024

22 FEB 2024 to 21 MAR 2024

TAKEOFF MINIMUMS (OBSTACLE) DEPARTURE PROCEDURES, AND DIVERSE VECTOR AREA (RADAR VECTORS)

24025

ELKIN, NC

ELKIN MUNI (ZEF)

TAKEOFF MINIMUMS AND (OBSTACLE) DEPARTURE PROCEDURES
AMDT 1 13NOV14 (14317) (FAA)

DEPARTURE PROCEDURE:

Rwy 7, climb heading 074° to 2000 before turning north.

Rwy 25, climb heading 255° to 2600 before turning north.

TAKEOFF OBSTACLE NOTES:

Rwy 7, trees beginning 2' from DER, 133' left of centerline, up to 61' AGL/1120' MSL.

Trees beginning 10' from DER, 64' right of centerline, up to 49' AGL/1048' MSL.

Vehicles on road 169' from DER, 388' left of centerline, up to 15' AGL/1074' MSL.

Trees beginning 665' from DER, 24' right of centerline, up to 50' AGL/1089' MSL.

Trees beginning 931' from DER, 33' left of centerline, up to 93' AGL/1132' MSL.

Trees beginning 1137' from DER, 249' right of centerline, up to 78' AGL/1097' MSL.

Tower 1781' from DER, 452' right of centerline, 83' AGL/1082' MSL.

Trees beginning 3265' from DER, 397' right of centerline, up to 100' AGL/1199' MSL.

Tower 5075' from DER, 1290' left of centerline, 100' AGL/1179' MSL.

Rwy 25, trees beginning 41' from DER, 125' left of centerline, up to 119' AGL/1138' MSL.

Trees beginning 45' from DER, 92' right of centerline, up to 78' AGL/1137' MSL.

Trees beginning 1217' from DER, 13' left of centerline, up to 99' AGL/1178' MSL.

Trees beginning 1235' from DER, 55' right of centerline, up to 100' AGL/1219' MSL.

ENGELHARD, NC

HYDE COUNTY (7W6)

TAKEOFF MINIMUMS AND (OBSTACLE) DEPARTURE PROCEDURES
ORIG 25APR19 (19115) (FAA)

DEPARTURE PROCEDURE:

Rwy 11, obtain ATC approval when requesting IFR clearance.

Rwy 29, climb heading 289° to 500' before turning left.

TAKEOFF OBSTACLE NOTES:

Rwy 11, trees beginning 62' from DER, left and right of centerline, up to 100' AGL/107' MSL.

Rwy 29, trees beginning 1513' from DER, 807' right of centerline, up to 100' AGL/106' MSL.

Trees beginning 1923' from DER, 956' left of centerline, up to 100' AGL/106' MSL.

Trees beginning 2828' from DER, left and right of centerline, up to 100' AGL/106' MSL.

ERWIN, NC

HARNETT RGNL JETPORT (HRJ)

TAKEOFF MINIMUMS AND (OBSTACLE) DEPARTURE PROCEDURES
ORIG 30AUG07 (07242) (FAA)

TAKEOFF OBSTACLE NOTES:

Rwy 5, multiple trees beginning 1529' from DER 16' left of centerline, up to 96' AGL/297' MSL.

Multiple trees beginning 2775' from DER, 111' right of centerline, up to 76' AGL/282' MSL.

Multiple poles beginning 303' from DER, 445' left of centerline, up to 17' AGL/239' MSL.

Pole beginning 671' from DER, 610' right of centerline, up to 38' AGL/239' MSL.

Rwy 23, trees beginning 94' from DER, 206' right of centerline, up to 64' AGL/252' MSL.

Trees beginning 5' from DER, 296' right of centerline, up to 59' AGL/247' MSL.

FAYETTEVILLE, NC

FAYETTEVILLE RGNL/GRANNIS FLD (FAY)

TAKEOFF MINIMUMS AND (OBSTACLE) DEPARTURE PROCEDURES
ORIG-A 19MAY22 (22139) (FAA)

TAKEOFF OBSTACLE NOTES:

Rwy 10, sign 45' from DER, 206' left of centerline, 4' AGL/186' MSL.

Rwy 22, vehicle on road 98' from DER, 474' right of centerline, 187' MSL.

Trees beginning 803' from DER, 489' right of centerline, up to 245' MSL.

Tree 2579' from DER, 1139' right of centerline, 262' MSL.

Trees beginning 2699' from DER, 891' right of centerline, up to 266' MSL.

Tree 2983' from DER, 1164' right of centerline, 268' MSL.

Rwy 28, poles, building, trees beginning 198' from DER, 191' left of centerline, up to 34' AGL/207' MSL.

Buildings, tree beginning 513' from DER, 361' right of centerline, up to 210' MSL.

Trees beginning 810' from DER, 341' right of centerline, up to 223' MSL.

Trees beginning 917' from DER, 482' right of centerline, up to 242' MSL.

Trees beginning 1102' from DER, 531' right of centerline, up to 244' MSL.

Trees beginning 1358' from DER, 508' right of centerline, up to 251' MSL.

Trees beginning 1424' from DER, 18' right of centerline, up to 252' MSL.

Tree 1429' from DER, 21' left of centerline, 64' AGL/226' MSL.

Trees beginning 1512' from DER, 144' right of centerline, up to 253' MSL.

Tree 1818' from DER, 87' left of centerline, 71' AGL/230' MSL.

Tree 1927' from DER, 197' left of centerline, 71' AGL/232' MSL.

Tree 2015' from DER, 108' left of centerline, 69' AGL/234' MSL.

TAKEOFF MINIMUMS (OBSTACLE) DEPARTURE PROCEDURES, AND DIVERSE VECTOR AREA (RADAR VECTORS)

24025

SE-2

TAKEOFF MINIMUMS (OBSTACLE) DEPARTURE PROCEDURES, AND DIVERSE VECTOR AREA (RADAR VECTORS)

24025

FLORENCE, SC

FLORENCE RGNL (FLO)

TAKEOFF MINIMUMS AND (OBSTACLE) DEPARTURE PROCEDURES

AMDT 5A 12AUG21 (21224) (FAA)

TAKEOFF MINIMUMS:

Rwy 1, std. w/min. climb of 225' per NM to 1300.

TAKEOFF OBSTACLE NOTES:

Rwy 1, sign 59' from DER, 242' left of centerline, 145' MSL.

Tower, trees beginning 341' from DER, 488' left of centerline, up to 47' AGL/190' MSL.

Tree, poles, sign beginning 1077' from DER, 256' left of centerline, up to 200' MSL.

Poles beginning 1539' from DER, 137' right of centerline, up to 187' MSL.

Tree 1771' from DER, 466' right of centerline, 189' MSL.

Tree 1772' from DER, 361' right of centerline, 221' MSL.

Trees beginning 1786' from DER, 375' right of centerline, up to 223' MSL.

Trees beginning 1876' from DER, 29' left of centerline, up to 220' MSL.

Trees beginning 1971' from DER, 289' right of centerline, up to 234' MSL.

Tree 2015' from DER, 890' left of centerline, 227' MSL.

Trees beginning 2034' from DER, 24' left of centerline, up to 230' MSL.

Trees beginning 2132' from DER, 239' right of centerline, up to 237' MSL.

Tree 2154' from DER, 492' right of centerline, 244' MSL.

Trees beginning 2178' from DER, 62' right of centerline, up to 250' MSL.

Trees beginning 2786' from DER, 182' left of centerline, up to 234' MSL.

Pole, trees beginning 3262' from DER, 140' left of centerline, up to 109' AGL/246' MSL.

Rwy 9, vegetation 32' from DER, 294' right of centerline, 138' MSL.

Tree 121' from DER, 255' right of centerline, 148' MSL.

Vegetation 161' from DER, 289' left of centerline, 126' MSL.

Tree 2247' from DER, 742' right of centerline, 184' MSL.

Trees beginning 3015' from DER, 636' left of centerline, up to 212' MSL.

Rwy 19, trees beginning 2' from DER, 132' left of centerline, up to 186' MSL.

Vegetation 21' from DER, 338' right of centerline, 125' MSL.

Tree 103' from DER, 449' right of centerline, 130' MSL.

Trees beginning 415' from DER, 319' right of centerline, up to 165' MSL.

Trees beginning 1093' from DER, 279' right of centerline, up to 181' MSL.

Trees beginning 1286' from DER, 23' right of centerline, up to 185' MSL.

Trees beginning 1693' from DER, 124' right of centerline, up to 191' MSL.

Tree 1898' from DER, 4' left of centerline, 188' MSL.

Trees beginning 1931' from DER, 208' left of centerline, up to 193' MSL.

Tree 2345' from DER, 821' left of centerline, 194' MSL.

Trees beginning 2438' from DER, 961' left of centerline, up to 202' MSL.

Tree 2763' from DER, 503' right of centerline, 194' MSL.

Tree 3532' from DER, 809' left of centerline, 205' MSL.

Rwy 27, tree 102' from DER, 389' left of centerline, 159' MSL.

FRANKLIN, NC

MACON COUNTY (1A5)

TAKEOFF MINIMUMS AND (OBSTACLE) DEPARTURE PROCEDURES

ORIG 12MAR09 (09071) (FAA)

TAKEOFF MINIMUMS:

Rwys 7, 25, Procedure NA at night. 5700-3, for climb in visual conditions.

DEPARTURE PROCEDURE:

Rwys 7, 25, for climb in visual conditions remain within 3 NM of Macon County airport to cross airport south bound at or above 7600 via ODF R-349 to ODF VORTAC.

TAKEOFF OBSTACLE NOTES:

Rwy 7, trees 599' from DER, 124' left of centerline, up to 38' AGL/2037' MSL.

Vehicle on road 964' from DER, 720' left of centerline, 15' AGL/2054' MSL.

Trees 1666' from DER, 620' right of centerline, up to 100' AGL/2179' MSL.

Trees beginning 3090' from DER, 1270' left of and to centerline, up to 100' AGL/3139' MSL.

Trees beginning 5665' from DER, 337' right of and to centerline, up to 100' AGL/2699' MSL.

Rwy 25, vehicle on road 63' from DER, 318' left of centerline, 15' AGL/2054' MSL.

Terrain 1000' from DER, on centerline, 2061' MSL.

Trees beginning 1737' from DER, 848' left of and to centerline, up to 100' AGL/3519' MSL.

Trees beginning 2460' from DER, 440' right of and to centerline, up to 100' AGL/3059' MSL.

22 FEB 2024 to 21 MAR 2024

22 FEB 2024 to 21 MAR 2024

TAKEOFF MINIMUMS (OBSTACLE) DEPARTURE PROCEDURES, AND DIVERSE VECTOR AREA (RADAR VECTORS)

24025

SE-2

TAKEOFF MINIMUMS (OBSTACLE) DEPARTURE PROCEDURES, AND DIVERSE VECTOR AREA (RADAR VECTORS)

24025

GASTONIA, NC

GASTONIA MUNI (AKH)

TAKEOFF MINIMUMS AND (OBSTACLE) DEPARTURE PROCEDURES

AMDT 6 20AUG15 (15232) (FAA)

DEPARTURE PROCEDURE:

Rwy 3, climb heading 049° to 2700 before turning left.

Rwy 21, climb heading 214° to 1600 before proceeding north.

TAKEOFF OBSTACLE NOTES:

Rwy 3, trees beginning 162' from DER, 371' right of centerline, up to 105' AGL/844' MSL.

Trees beginning 1200' from DER, 463' left of centerline, up to 76' AGL/835' MSL.

Trees beginning 1965' from DER, 433' left of centerline, up to 80' AGL/859' MSL.

Trees 3819' from DER, 657' right of centerline, up to 126' AGL/885' MSL.

Rwy 21, pole 254' from DER, 336' right of centerline, 20' AGL/810' MSL.

Pole 288' from DER, 329' left of centerline, 18' AGL/808' MSL.

Tower and trees beginning 297' from DER, 467' left of centerline, up to 93' AGL/872' MSL.

Trees beginning 1245' from DER, 558' right of centerline, up to 99' AGL/878' MSL.

GEORGETOWN, SC

GEORGETOWN COUNTY (GGE)

TAKEOFF MINIMUMS AND (OBSTACLE) DEPARTURE PROCEDURES

AMDT 1 18SEP14 (14261) (FAA)

DEPARTURE PROCEDURE:

Rwy 29, climb heading 289° to 600 before turning northbound.

TAKEOFF OBSTACLE NOTES:

Rwy 5, trees beginning 382' from DER, left and right of centerline, up to 97' AGL/122' MSL.

Rwy 11, trees beginning 500' from DER, 200' left and right of centerline, up to 100' AGL/129' MSL.

Rwy 23, trees beginning 177' from DER, 441' right of centerline, up to 100' AGL/111' MSL.

Trees 1023' from DER, 670' left of centerline, up to 68' AGL/88' MSL.

Rwy 29, trees beginning 880' from DER, left and right of centerline, up to 100' AGL/138' MSL.

GOLDSBORO, NC

WAYNE EXEC JETPORT (GWW)

TAKEOFF MINIMUMS AND (OBSTACLE) DEPARTURE PROCEDURES

AMDT 1A 17NOV11 (21168) (FAA)

TAKEOFF OBSTACLE NOTES:

Rwy 5, tree 184' from DER, 494' right of centerline, 41' AGL/174' MSL.

Rwy 23, trees beginning 107' from DER, 313' right of centerline, up to 109' AGL/242' MSL.

Bush 101' from DER, 487' left of centerline, 9' AGL/142' MSL.

Trees beginning 2212' from DER, 12' left of centerline, up to 98' AGL/231' MSL.

GREENSBORO, NC

PIEDMONT TRIAD INTL (GSO)

TAKEOFF MINIMUMS AND (OBSTACLE) DEPARTURE PROCEDURES

AMDT 1A 25JAN24 (24025) (FAA)

TAKEOFF OBSTACLE NOTES:

Rwy 5L, poles beginning 9' from DER, 14' right of centerline, up to 5' AGL/856' MSL.

Pole 9' from DER, 35' left of centerline, 9' AGL/856' MSL.

Tree 1098' from DER, 662' left of centerline, 41' AGL/884' MSL.

Tree 1267' from DER, 642' left of centerline, 68' AGL/890' MSL.

Tree 1327' from DER, 689' left of centerline, 72' AGL/898' MSL.

Trees beginning 1373' from DER, 543' left of centerline, up to 88' AGL/912' MSL.

Tree 2879' from DER, 1242' left of centerline, 54' AGL/927' MSL.

Tree 2901' from DER, 1122' left of centerline, 58' AGL/931' MSL.

Tree 2933' from DER, 1277' left of centerline, 81' AGL/950' MSL.

Tree 3081' from DER, 1314' left of centerline, 72' AGL/952' MSL.

Tree 3487' from DER, 1165' left of centerline, 82' AGL/958' MSL.

Tree 3554' from DER, 927' left of centerline, 122' AGL/972' MSL.

Trees beginning 3564' from DER, 831' left of centerline, up to 104' AGL/992' MSL.

Tree 4181' from DER, 1499' left of centerline, 113' AGL/993' MSL.

Trees beginning 4215' from DER, 1235' left of centerline, up to 124' AGL/996' MSL.

Tree 4240' from DER, 1102' right of centerline, 116' AGL/963' MSL.

Tree 4376' from DER, 1291' right of centerline, 119' AGL/975' MSL.

Tree 4482' from DER, 1505' right of centerline, 116' AGL/981' MSL.

Tree 4486' from DER, 1421' right of centerline, 121' AGL/982' MSL.

Trees beginning 4555' from DER, 838' right of centerline, up to 128' AGL/989' MSL.

CON'T

22 FEB 2024 to 21 MAR 2024

22 FEB 2024 to 21 MAR 2024

TAKEOFF MINIMUMS (OBSTACLE) DEPARTURE PROCEDURES, AND DIVERSE VECTOR AREA (RADAR VECTORS)

24025

SE-2

TAKEOFF MINIMUMS (OBSTACLE) DEPARTURE PROCEDURES, AND DIVERSE VECTOR AREA (RADAR VECTORS)

24025

GREENSBORO, NC (CON'T) PIEDMONT TRIAD INTL (GSO) (CON'T)

Rwy 5R, terrain 3' from DER, 499' right of centerline, 891' MSL.
Poles beginning 6' from DER, 4' left of centerline, up to 1' AGL/887' MSL.
Terrain 261' from DER, 535' right of centerline, 894' MSL.
Pole 325' from DER, 546' right of centerline, 5' AGL/895' MSL.
Pole 386' from DER, 558' right of centerline, 5' AGL/898' MSL.
Tree 1125' from DER, 478' right of centerline, 68' AGL/915' MSL.
Tree 1366' from DER, 526' right of centerline, 57' AGL/923' MSL.
Tree 1889' from DER, 914' right of centerline, 69' AGL/950' MSL.
Tree 1957' from DER, 791' right of centerline, 68' AGL/951' MSL.
Trees beginning 2017' from DER, 754' right of centerline, up to 95' AGL/966' MSL.
Trees beginning 2256' from DER, 581' right of centerline, up to 109' AGL/988' MSL.
Tree 2638' from DER, 1088' left of centerline, 57' AGL/952' MSL.
Tree 2690' from DER, 1130' left of centerline, 65' AGL/962' MSL.
Trees beginning 2744' from DER, 1195' left of centerline, up to 69' AGL/967' MSL.
Rwy 14, trees beginning 182' from DER, 478' left of centerline, up to 29' AGL/908' MSL.
Trees beginning 212' from DER, 546' left of centerline, up to 42' AGL/909' MSL.
Tree, poles beginning 566' from DER, 550' right of centerline, up to 44' AGL/933' MSL.
Electrical system 1102' from DER, 715' right of centerline, 48' AGL/940' MSL.
Tank 2599' from DER, 1089' right of centerline, 67' AGL/968' MSL.
Tree 2890' from DER, 570' right of centerline, 83' AGL/978' MSL.
Tree 3035' from DER, 643' right of centerline, 88' AGL/988' MSL.
Trees beginning 3067' from DER, 362' right of centerline, up to 87' AGL/991' MSL.
Trees beginning 3120' from DER, 519' right of centerline, up to 91' AGL/996' MSL.
Trees beginning 4577' from DER, 1320' left of centerline, up to 108' AGL/1024' MSL.
Trees beginning 4647' from DER, 1312' left of centerline, up to 115' AGL/1028' MSL.
Rwy 23L, tree 475' from DER, 533' left of centerline, 33' AGL/914' MSL.
Trees beginning 775' from DER, 516' left of centerline, up to 70' AGL/938' MSL.
Trees beginning 828' from DER, 676' left of centerline, up to 72' AGL/940' MSL.
Tree 1032' from DER, 584' right of centerline, 48' AGL/928' MSL.
Tree 1269' from DER, 803' right of centerline, 58' AGL/943' MSL.
Tree 1646' from DER, 471' left of centerline, 79' AGL/945' MSL.
Tree 1917' from DER, 338' right of centerline, 89' AGL/949' MSL.
Rwy 23R, poles beginning 9' from DER, 4' right of centerline, up to 14' AGL/918' MSL.
Poles beginning 9' from DER, 24' left of centerline, up to 14' AGL/917' MSL.
Pole 171' from DER, 539' left of centerline, 33' AGL/936' MSL.
Tree 753' from DER, 620' right of centerline, 35' AGL/937' MSL.
Trees beginning 855' from DER, 484' right of centerline, up to 53' AGL/951' MSL.
Trees beginning 1196' from DER, 673' left of centerline, up to 90' AGL/960' MSL.
Tree 1312' from DER, 665' left of centerline, 95' AGL/964' MSL.
Trees beginning 1317' from DER, 616' left of centerline, up to 79' AGL/967' MSL.
Trees beginning 1346' from DER, 573' left of centerline, up to 82' AGL/970' MSL.
Tree 1669' from DER, 861' right of centerline, 61' AGL/961' MSL.
Rwy 32, tree 10' from DER, 318' left of centerline, 37' AGL/926' MSL.
Vegetation 32' from DER, 278' right of centerline, 13' AGL/926' MSL.
Tree 113' from DER, 291' left of centerline, 39' AGL/929' MSL.
Tree 2602' from DER, 862' right of centerline, 107' AGL/991' MSL.
Tree 2629' from DER, 941' right of centerline, 105' AGL/993' MSL.
Trees beginning 2701' from DER, 618' right of centerline, up to 98' AGL/995' MSL.
Trees beginning 2735' from DER, 701' right of centerline, up to 102' AGL/1000' MSL.
Trees beginning 2874' from DER, 638' right of centerline, up to 89' AGL/1002' MSL.
Trees beginning 3687' from DER, 290' right of centerline, up to 118' AGL/1024' MSL.

GREENVILLE, NC PITT-GREENVILLE (PGV)

TAKEOFF MINIMUMS AND (OBSTACLE) DEPARTURE PROCEDURES AMD T 5 04FEB16 (16035) (FAA)

TAKEOFF OBSTACLE NOTES:

Rwy 2, ground beginning 50' from DER, 50' left of centerline, up to 31' MSL.
Ground beginning 86' from DER, 291' right of centerline, up to 29' MSL.
Trees beginning 975' from DER, 688' right of centerline, up to 86' AGL/124' MSL.
Trees beginning 1779' from DER, 653' right of centerline, up to 96' AGL/125' MSL.
Tree 1910' from DER, 989' left of centerline, 63' AGL/89' MSL.
Trees beginning 2224' from DER, 655' right of centerline, up to 115' AGL/142' MSL.
Trees beginning 2562' from DER, 583' left of centerline, up to 82' AGL/134' MSL.
Trees beginning 3164' from DER, 719' left of centerline, up to 107' AGL/138' MSL.
CON'T

TAKEOFF MINIMUMS (OBSTACLE) DEPARTURE PROCEDURES, AND DIVERSE VECTOR AREA (RADAR VECTORS)

24025

SE-2

22 FEB 2024 to 21 MAR 2024

22 FEB 2024 to 21 MAR 2024

TAKEOFF MINIMUMS (OBSTACLE) DEPARTURE PROCEDURES, AND DIVERSE VECTOR AREA (RADAR VECTORS)

24025

GREENVILLE, NC (CON'T)

PITT-GREENVILLE (PGV) (CON'T)

Rwy 8, building, poles, road and trees beginning 79' from DER, 298' left of centerline, up to 87' AGL/113' MSL.

Trees and road beginning 144' from DER, 456' right of centerline, up to 44' AGL/66' MSL.

Building, poles and trees beginning 795' from DER, 65' right of centerline, up to 59' AGL/71' MSL.

Trees and poles beginning 1009' from DER, 14' left of centerline, up to 90' AGL/119' MSL.

Building, poles and trees beginning 1538' from DER, 279' right of centerline, up to 62' AGL/88' MSL.

Trees beginning 2334' from DER, 307' right of centerline, up to 88' AGL/110' MSL.

Trees beginning 2336' from DER, 7' left of centerline, up to 101' AGL/127' MSL.

Trees beginning 3324' from DER, 646' right of centerline, up to 99' AGL/125' MSL.

Rwy 20, runway lighting 40' from DER, 148' right of centerline, 6' AGL/25' MSL.

Runway lighting and sign beginning 40' from DER, 149' left of centerline, up to 5' AGL/25' MSL.

Vehicles on road, bridge/overpass, and trees beginning 230' from DER, 245' left of centerline, up to 26' AGL/42' MSL.

NAVAID 491' from DER, 280' right of centerline, 35' AGL/44' MSL.

Trees beginning 1133' from DER, 745' left of centerline, up to 103' AGL/115' MSL.

Trees beginning 1354' from DER, 751' right of centerline, up to 113' AGL/125' MSL.

Transmission line towers and trees beginning 2412' from DER, crossing left to right of centerline, up to 112' AGL/122' MSL.

Trees beginning 2673' from DER, crossing centerline, up to 100' AGL/159' MSL.

Trees beginning 3930' from DER, 432' left of centerline, up to 102' AGL/162' MSL.

Trees beginning 5002' from DER, 706' left of centerline, up to 93' AGL/164' MSL.

Rwy 26, airport sign 40' from DER, 199' left of centerline, 4' AGL/26' MSL.

Runway end identifier light, 41' from DER, 150' right of centerline, 2' AGL/26' MSL.

Trees beginning 152' from DER, 354' right of centerline, up to 86' AGL/117' MSL.

Trees beginning 336' from DER, 504' left of centerline, up to 25' AGL/38' MSL.

Trees beginning 573' from DER, 229' left of centerline, up to 106' AGL/109' MSL.

Trees beginning 1330' from DER, 170' left of centerline, up to 109' AGL/112' MSL.

Trees beginning 1625' from DER, crossing centerline, up to 127' AGL/130' MSL.

Trees beginning 2122' from DER, crossing centerline, up to 131' AGL/134' MSL.

GREENVILLE, SC

DONALDSON FLD (GYH)

TAKEOFF MINIMUMS AND (OBSTACLE) DEPARTURE PROCEDURES

ORIG-A 15OCT15 (21168) (FAA)

TAKEOFF MINIMUMS:

Rwy 5, 300-1% or std. w/min. climb of 220' per NM to 1300, or alternatively, with std. takeoff minimums and a normal 200' per NM climb gradient, takeoff must occur no later than 1800' prior to DER.

TAKEOFF OBSTACLE NOTES:

Rwy 5, fence 63' from DER, 457' right of centerline, 8' AGL/921' MSL.

Trees beginning 874' from DER, 723' left of centerline, up to 67' AGL/976' MSL.

Trees beginning 1088' from DER, 129' right of centerline, up to 82' AGL/998' MSL.

Tower 1.5 NM from DER, 2224' left of centerline, 250' AGL/1167' MSL.

GREENVILLE DOWNTOWN (GMU)

TAKEOFF MINIMUMS AND (OBSTACLE) DEPARTURE PROCEDURES

AMDT 7 15OCT15 (15288) (FAA)

TAKEOFF MINIMUMS:

Rwy 10, 300-1% or std. w/min. climb of 355' per NM to 1300.

Rwy 28, 300-2% or std. w/min. climb of 220' per NM to 1500, or alternatively, with std. takeoff minimums and a normal 200' per NM climb gradient, takeoff must occur no later than 1900' prior to DER.

DEPARTURE PROCEDURE:

Rwy 1, climb heading 006° to 2800 before turning west or northwest.

Rwy 10, climb heading 096° to 1800 before turning west or northwest.

Rwy 19, climb heading 186° to 1800 before turning north.

Rwy 28, climb heading 276° to 2300 before turning north or northwest.

TAKEOFF OBSTACLE NOTES:

Rwy 1, sign 26' from DER, 125' left of centerline, 3' AGL/1049' MSL.

Building and poles beginning 195' from DER, 374' right of centerline, up to 48' AGL/1111' MSL.

Trees beginning 350' from DER, 319' left of centerline, up to 88' AGL/1129' MSL.

Sign, building, poles, and trees beginning 1050' from DER, 55' right of centerline, up to 52' AGL/1188' MSL.

Buildings 4064' from DER, 384' right of centerline, up to 61' AGL/1174' MSL.

Rwy 10, sign and trees beginning 18' from DER, 48' right of centerline, up to 31' AGL/1026' MSL.

Sign 21' from DER, 124' left of centerline, 3' AGL/1017' MSL.

Pole and trees beginning 9' from DER, 198' right of centerline, up to 56' AGL/1057' MSL.

Trees beginning 498' from DER, 50' left of centerline, up to 51' AGL/1042' MSL.

Trees beginning 1821' from DER, 603' left of centerline, up to 47' AGL/1068' MSL.

Building and pole beginning 3337' from DER, 539' right of centerline, up to 105' AGL/1136' MSL.

Tower 5213' from DER, 810' left of centerline, 152' AGL/1173' MSL.

Rwy 19, signs beginning 11' from DER, 71' right of centerline, up to 3' AGL/991' MSL.

Trees beginning 173' from DER, 492' right of centerline, up to 45' AGL/1013' MSL.

Pole and trees beginning 276' from DER, 527' left of centerline, up to 33' AGL/1003' MSL.

Trees beginning 2809' from DER, 763' right of centerline, up to 83' AGL/1094' MSL.

CON'T

TAKEOFF MINIMUMS (OBSTACLE) DEPARTURE PROCEDURES, AND DIVERSE VECTOR AREA (RADAR VECTORS)

24025

SE-2

TAKEOFF MINIMUMS (OBSTACLE) DEPARTURE PROCEDURES, AND DIVERSE VECTOR AREA (RADAR VECTORS)

24025

GREENVILLE, SC (CON'T)

GREENVILLE DOWNTOWN (GMU) (CON'T)

Rwy 28, signs beginning 13' from DER, 77' left of centerline, up to 3' AGL/1000' MSL.
Pole and trees beginning 45' from DER, 285' right of centerline, up to 49' AGL/1043' MSL.
Poles and trees beginning 194' from DER, 251' left of centerline, up to 56' AGL/1021' MSL.
Trees beginning 532' from DER, 60' right of centerline, up to 95' AGL/1047' MSL.
Trees beginning 850' from DER, 323' left of centerline, up to 71' AGL/1075' MSL.
Building 1.9 NM from DER, 2143' right of centerline, 332' AGL/1316' MSL.

GREENWOOD, SC

GREENWOOD COUNTY (GRD)

TAKEOFF MINIMUMS AND (OBSTACLE) DEPARTURE PROCEDURES

AMDT 1 10NOV16 (16315) (FAA)

TAKEOFF OBSTACLE NOTES:

Rwy 5: Tree 387' from DER, 289' right of centerline, 100' AGL/629' MSL.
Rwy 9: trees beginning 215' from DER, 493' left of centerline, up to 643' MSL.
Tree 444' from DER, 554' left of centerline, 647' MSL.
Trees beginning 568' from DER, 253' left of centerline, up to 651' MSL.
Trees beginning 627' from DER, 545' right of centerline, up to 646' MSL.
Trees beginning 780' from DER, 265' left of centerline, up to 663' MSL.
Tree and pole beginning 899' from DER, 308' left of centerline, up to 668' MSL.
Tree 2090' from DER, 1000' right of centerline, 109' AGL/691' MSL.
Tree 2692' from DER, 1038' left of centerline, 86' AGL/699' MSL.
Trees beginning 2096' from DER, 512' left of centerline, up to 100' AGL/719' MSL.
Trees beginning 3359' from DER, 546' right of centerline, 100' AGL/709' MSL.
Trees beginning 3773' from DER, 550' right of centerline, up to 100' AGL/719' MSL.
Rwy 23: trees beginning 812' from DER, 571' left of centerline, up to 657' MSL.
Tree 963' from DER, 516' left of centerline, 670' MSL.
Trees, beginning 1037' from DER, 291' left of centerline, up to 61' AGL/681' MSL.
Trees, beginning 1323' from DER, 10' left of centerline, up to 100' AGL/719' MSL.
Tree 1761' from DER, 413' right of centerline, 673' MSL.
Tree 1933' from DER, 244' right of centerline, 86' AGL/677' MSL.
Trees, beginning 2581' from DER, 72' right of centerline, up to 100' AGL/719' MSL.
Trees, beginning 3865' from DER, 1179' right of centerline, up to 100' AGL/729' MSL.
Rwy 27: bush 11' from DER, 274' left of centerline, 3' AGL/634' MSL.
Tree 264' from DER, 550' left of centerline, 641' MSL.
Tree 300' from DER, 549' right of centerline, 652' MSL.
Trees beginning 424' from DER, 543' left of centerline, up to 649' MSL.
Tree 467' from DER, 587' right of centerline, 669' MSL.
Tree 562' from DER, 639' right of centerline, 680' MSL.
Trees beginning 670' from DER, 10' right of centerline, up to 85' AGL/716' MSL.
Trees beginning 725' from DER, 588' left of centerline, up to 653' MSL.
Trees beginning 966' from DER, 594' left of centerline, up to 686' MSL.
Trees beginning 1087' from DER, 657' left of centerline, up to 695' MSL.
Trees beginning 1681' from DER, 695' left of centerline, up to 707' MSL.
Trees beginning 1864' from DER, 34' left of centerline, up to 714' MSL.
Trees beginning 2764' from DER, 159' left of centerline, up to 718' MSL.
Trees beginning 2959' from DER, 119' right of centerline, up to 726' MSL.
Trees beginning 2965' from DER, 11' left of centerline, up to 727' MSL.
Trees beginning 3332' from DER, 561' right of centerline, up to 100' AGL/739' MSL.
Trees beginning 3477' from DER, 572' left of centerline, 100' AGL/729' MSL.
Trees beginning 3724' from DER, 550' left of centerline, 100' AGL/739' MSL.
Trees beginning 3746' from DER, 790' right of centerline, 100' AGL/749' MSL.

GREER, SC

GREENVILLE SPARTANBURG INTL(GSP)

TAKEOFF MINIMUMS AND (OBSTACLE) DEPARTURE PROCEDURES

AMDT 1A 15OCT15 (15288) (FAA)

DEPARTURE PROCEDURE:

Rwy 4, climb heading 038° to 2500 before turning left.

TAKEOFF OBSTACLE NOTES:

Rwy 4, trees 1422' from DER, 832' right of centerline, up to 65' AGL/1001' MSL.

22 FEB 2024 to 21 MAR 2024

22 FEB 2024 to 21 MAR 2024

TAKEOFF MINIMUMS (OBSTACLE) DEPARTURE PROCEDURES, AND DIVERSE VECTOR AREA (RADAR VECTORS)

24025

SE-2

TAKEOFF MINIMUMS (OBSTACLE) DEPARTURE PROCEDURES, AND DIVERSE VECTOR AREA (RADAR VECTORS)

24025

HARTSVILLE, SC

HARTSVILLE RGNL (HVS)

TAKEOFF MINIMUMS AND (OBSTACLE) DEPARTURE PROCEDURES

AMDT 1 17AUG17 (17229) (FAA)

TAKEOFF OBSTACLE NOTES:

Rwy 3, buildings, tank beginning 5' from DER, 336' right of centerline, up to 368' MSL.
 Bushes, tree beginning 31' from DER, 127' left of centerline, up to 384' MSL.
 Pole, tank, building beginning 68' from DER, 380' right of centerline, up to 385' MSL.
 Bushes beginning 381' from DER, 501' left of centerline, up to 385' MSL.
 Trees beginning 410' from DER, 507' right of centerline, up to 430' MSL.
 Trees, poles, buildings beginning 541' from DER, 244' left of centerline, up to 444' MSL.
 Trees, poles beginning 541' from DER, 13' right of centerline, up to 432' MSL.
 Tree 786' from DER, 632' left of centerline, 462' MSL.
 Trees beginning 900' from DER, 11' left of centerline, up to 467' MSL.
 Trees, poles beginning 1042' from DER, 2' left of centerline, up to 471' MSL.
 Trees, poles beginning 1402' from DER, 3' right of centerline, up to 436' MSL.
 Trees beginning 2040' from DER, 616' right of centerline, up to 437' MSL.
 Trees beginning 2119' from DER, 6' right of centerline, up to 440' MSL.
 Trees beginning 2251' from DER, 103' right of centerline, up to 443' MSL.
 Trees beginning 2355' from DER, 105' right of centerline, up to 445' MSL.
 Trees beginning 2363' from DER, 47' right of centerline, up to 450' MSL.
 Trees beginning 2455' from DER, 97' right of centerline, up to 453' MSL.
 Trees beginning 2534' from DER, 13' right of centerline, up to 454' MSL.
 Trees, pole beginning 2662' from DER, 14' right of centerline, up to 460' MSL.
 Trees, poles beginning 2756' from DER, 78' left of centerline, up to 473' MSL.
 Trees beginning 3076' from DER, 655' left of centerline, up to 475' MSL.
 Trees, pole beginning 3102' from DER, 16' left of centerline, up to 478' MSL.
 Trees beginning 3200' from DER, 27' right of centerline, up to 465' MSL.
 Trees beginning 3456' from DER, 758' right of centerline, up to 466' MSL.
 Trees beginning 3505' from DER, 12' left of centerline, up to 480' MSL.
 Trees beginning 3532' from DER, 652' right of centerline, up to 469' MSL.
 Trees beginning 3580' from DER, 197' right of centerline, up to 471' MSL.
 Trees beginning 3619' from DER, 490' right of centerline, up to 473' MSL.
 Trees beginning 3625' from DER, 103' right of centerline, up to 480' MSL.
 Trees beginning 3720' from DER, 208' right of centerline, up to 487' MSL.
 Trees beginning 3809' from DER, 117' right of centerline, up to 489' MSL.
 Trees beginning 4023' from DER, 204' right of centerline, up to 493' MSL.
 Trees beginning 4139' from DER, 251' right of centerline, up to 495' MSL.
 Trees, transmission tower beginning 4249' from DER, 55' left of centerline, up to 485' MSL.
Rwy 21, trees beginning 21' from DER, 459' left of centerline, up to 402' MSL.
 Buildings beginning 95' from DER, 440' right of centerline, up to 360' MSL.
 Pole, building, tree beginning 263' from DER, 410' right of centerline, up to 365' MSL.

HATTERAS, NC

BILLY MITCHELL (HSE)

TAKEOFF MINIMUMS AND (OBSTACLE) DEPARTURE PROCEDURES

ORIG 24SEP09 (09267) (FAA)

TAKEOFF OBSTACLE NOTES:

Rwy 7, trees beginning 388' from DER, left of centerline, up to 100' AGL/169' MSL.
Rwy 25, trees 512' from DER, 103' right of centerline, 100' AGL/110' MSL.
 Boat mast 2107' from DER, 664' left of centerline, 100' AGL/100' MSL.

HICKORY, NC

HICKORY RGNL (HKY)

TAKEOFF MINIMUMS AND (OBSTACLE) DEPARTURE PROCEDURES

AMDT 4 25AUG11 (11237) (FAA)

DEPARTURE PROCEDURE:

Use HICKORY DEPARTURE.

22 FEB 2024 to 21 MAR 2024

22 FEB 2024 to 21 MAR 2024

TAKEOFF MINIMUMS (OBSTACLE) DEPARTURE PROCEDURES, AND DIVERSE VECTOR AREA (RADAR VECTORS)

24025

SE-2

TAKEOFF MINIMUMS (OBSTACLE) DEPARTURE PROCEDURES, AND DIVERSE VECTOR AREA (RADAR VECTORS)

24025

HILTON HEAD ISLAND, SC

HILTON HEAD (HXD)

TAKEOFF MINIMUMS AND (OBSTACLE) DEPARTURE PROCEDURES

AMDT 1 07DEC17 (17341) (FAA)

TAKEOFF OBSTACLE NOTES:

- Rwy 3**, electrical system 5' from DER, 103' left of centerline, 4' AGL/16' MSL.
- Tree, fence beginning 56' from DER, 294' left of centerline, up to 81' MSL.
- Tree, terrain, building, traverse way, pole beginning 93' from DER, 5' left of centerline, up to 101' AGL/116' MSL.
- Tree, fence beginning 177' from DER, 293' right of centerline, up to 87' MSL.
- Tree, fence, building beginning 352' from DER, 6' right of centerline, up to 87' AGL/98' MSL.
- Trees beginning 3082' from DER, 106' right of centerline, up to 82' AGL/99' MSL.
- Trees beginning 3239' from DER, 279' right of centerline, up to 85' AGL/102' MSL.
- Tree 3295' from DER, 288' right of centerline, 91' AGL/107' MSL.
- Trees beginning 3323' from DER, 299' right of centerline, up to 95' AGL/112' MSL.
- Trees beginning 3359' from DER, 318' right of centerline, up to 97' AGL/113' MSL.
- Rwy 21**, tree 4' from DER, 336' right of centerline, 103' MSL.
- Tree, fence, pole beginning 8' from DER, 297' left of centerline, up to 73' MSL.
- Tree, building, pole beginning 93' from DER, 1' right of centerline, up to 91' AGL/110' MSL.
- Tree 190' from DER, 468' left of centerline, 60' AGL/76' MSL.
- Tree, NAVAID, building beginning 312' from DER, 260' left of centerline, up to 69' AGL/85' MSL.
- Trees beginning 662' from DER, 455' left of centerline, up to 96' MSL.
- Trees beginning 771' from DER, 292' left of centerline, up to 101' MSL.
- Tree 1144' from DER, 675' left of centerline, 105' AGL/116' MSL.
- Tree, pole beginning 1222' from DER, 3' left of centerline, up to 109' AGL/120' MSL.
- Trees beginning 2489' from DER, 10' right of centerline, up to 111' MSL.
- Trees beginning 2695' from DER, 0' right of centerline, up to 113' MSL.
- Trees beginning 2859' from DER, 25' right of centerline, up to 117' MSL.
- Trees beginning 2942' from DER, 66' right of centerline, up to 118' MSL.
- Trees beginning 3027' from DER, 2' right of centerline, up to 106' AGL/119' MSL.

JACKSONVILLE, NC

ALBERT J ELLIS (OAJ)

TAKEOFF MINIMUMS AND (OBSTACLE) DEPARTURE PROCEDURES

AMDT 2 20SEP12 (12264) (FAA)

TAKEOFF OBSTACLE NOTES:

- Rwy 5**, vehicles on road 93' from DER, left and right of centerline, up to 15' AGL/107' MSL.
- Pole 1319' from DER, 830' left of centerline, 44' AGL/127' MSL.
- Trees beginning 1678' from DER, left and right of centerline up to 100' AGL/198' MSL.
- Rwy 23**, vehicles on road 233' from DER, 221' left of centerline, up to 15' AGL/107' MSL.
- Trees beginning 2091' from DER, left and right of centerline, up to 100' AGL/192' MSL.

JEFFERSON, NC

ASHE COUNTY (GEV)

TAKEOFF MINIMUMS AND (OBSTACLE) DEPARTURE PROCEDURES

AMDT 1 27APR17 (17117) (FAA)

TAKEOFF MINIMUMS:

- Rwy 28**, 700-3 w/min. climb of 425' per NM to 5500 or standard w/min. climb of 750' per NM to 4900 or 2200-3 for climb in visual conditions.

DEPARTURE PROCEDURE:

- Rwy 10**, climb heading 096° to 4400 before proceeding on course.

- Rwy 28**, climb heading 276° to 6100 before proceeding on course.

VCOA:

- Rwy 28**, obtain ATC approval for VCOA when requesting IFR clearance. Climb in visual conditions to cross Ashe County Airport at or above 5200 before proceeding on course.

TAKEOFF OBSTACLE NOTES:

- Rwy 10**, NAVAID, runway light, and bush beginning 8' from DER, 17' right of centerline, up to 3' AGL/3088' MSL.
- NAVAID, runway light, and bush beginning 8' from DER, 17' left of centerline, up to 4' AGL/3089' MSL.
- Trees beginning 344' from DER, 231' right of centerline, up to 3109' MSL.
- Trees beginning 369' from DER, 236' right of centerline, up to 3114' MSL.
- Rwy 28**, terrain, antenna, runway light, and tree beginning 23' from DER, 6' left of centerline, up to 3250' MSL.
- Terrain 25' from DER, 176' right of centerline, 3183' MSL.
- Terrain, runway light, building, agricultural equipment, and tree beginning 100' from DER, 22' right of centerline, up to 3241' MSL.
- Trees beginning 1091' from DER, 6' right of centerline, up to 3306' MSL.
- Trees beginning 6071' from DER, 1669' right of centerline, up to 3422' MSL.
- Tree 1.0 NM from DER, 1990' right of centerline, 3490' MSL.
- Trees beginning 1.0 NM from DER, 1487' right of centerline, up to 3497' MSL.
- Trees beginning 1.0 NM from DER, 1330' right of centerline, up to 3564' MSL.
- Trees beginning 1.0 NM from DER, 1599' right of centerline, up to 3644' MSL.
- Trees beginning 1 NM from DER, 1185' right of centerline, up to 3731' MSL.
- Pole and trees beginning 1.1 NM from DER, 513' right of centerline, up to 3831' MSL.
- Tree 2.5 NM from DER, 1194' right of centerline, 3597' MSL.

TAKEOFF MINIMUMS (OBSTACLE) DEPARTURE PROCEDURES, AND DIVERSE VECTOR AREA (RADAR VECTORS)

24025

SE-2


TAKEOFF MINIMUMS (OBSTACLE) DEPARTURE PROCEDURES, AND


DIVERSE VECTOR AREA (RADAR VECTORS)

24025

KENANSVILLE, NC**DUPLIN COUNTY (DPL)****TAKEOFF MINIMUMS AND (OBSTACLE) DEPARTURE PROCEDURES**

AMDT 1 08NOV18 (18312) (FAA)

TAKEOFF OBSTACLE NOTES:**Rwy 5**, trees beginning 134' from DER, 501' left of centerline, up to 180' MSL.

Tree 194' from DER, 516' right of centerline, 175' MSL.

Tree 408' from DER, 525' right of centerline, 187' MSL.

Trees beginning 1092' from DER, 579' right of centerline, up to 215' MSL.

Rwy 23, trees beginning 100' from DER, 491' left of centerline, up to 174' MSL.

Tree 115' from DER, 490' right of centerline, 169' MSL.

Tree 180' from DER, 504' right of centerline, 191' MSL.

Tree 387' from DER, 538' right of centerline, 208' MSL.

Trees beginning 588' from DER, 581' right of centerline, up to 210' MSL.

Trees beginning 684' from DER, 642' left of centerline, up to 197' MSL.

Trees beginning 1089' from DER, 633' right of centerline, up to 211' MSL.

Trees beginning 1314' from DER, 749' left of centerline, up to 198' MSL.

KILL DEVIL HILLS, NC**FIRST FLIGHT (FFA)****TAKEOFF MINIMUMS AND (OBSTACLE) DEPARTURE PROCEDURES**

ORIG 22JUN17 (17173) (FAA)

TAKEOFF OBSTACLE NOTES:**Rwy 21**, tree, 11' from DER, 481' right of centerline, 79' MSL.

Trees beginning 12' from DER, 277' right of centerline, up to 91' MSL.

Trees beginning 18' from DER, 149' right of centerline, up to 93' MSL.

Tree, 20' from DER, 318' left of centerline, 71' MSL.

Trees beginning 42' from DER, 213' left of centerline, up to 75' MSL.

Trees beginning 115' from DER, 150' left of centerline, up to 79' MSL.

Trees beginning 212' from DER, 142' left of centerline, up to 81' MSL.

Trees beginning 334' from DER, 155' left of centerline, up to 84' MSL.

Trees beginning 347' from DER, 162' left of centerline, up to 85' MSL.

Trees beginning 441' from DER, 167' left of centerline, up to 86' MSL.

Trees beginning 483' from DER, 340' right of centerline, up to 94' MSL.

Trees beginning 497' from DER, 205' right of centerline, up to 95' MSL.

Tree, pole beginning 616' from DER, 192' right of centerline, up to 97' MSL.

Tree, 2798' from DER, 876' left of centerline, 90' MSL.

Antenna 2852' from DER, 470' left of centerline, 110' MSL.

Rwy 3, trees beginning 2' from DER, 214' left of centerline, up to 71' MSL.

Tree, building beginning 88' from DER, 28' left of centerline, up to 75' MSL.

Pole, 339' from DER, 201' right of centerline, 21' MSL.

Trees beginning 365' from DER, 37' right of centerline, up to 25' MSL.

Tree, 454' from DER, 207' right of centerline, 30' MSL.

Trees beginning 467' from DER, 64' right of centerline, up to 34' MSL.

Tree, 731' from DER, 274' right of centerline, 35' MSL.

Tree, 909' from DER, 384' right of centerline, 44' MSL.

Pole beginning 1301' from DER, 236' right of centerline, up to 105' MSL.

Pole beginning 2109' from DER, 133' left of centerline, up to 105' MSL.

22 FEB 2024 to 21 MAR 2024

22 FEB 2024 to 21 MAR 2024


TAKEOFF MINIMUMS (OBSTACLE) DEPARTURE PROCEDURES, AND


DIVERSE VECTOR AREA (RADAR VECTORS)

24025

SE-2

TAKEOFF MINIMUMS (OBSTACLE) DEPARTURE PROCEDURES, AND DIVERSE VECTOR AREA (RADAR VECTORS)

24025

KINGSTREE, SC

WILLIAMSBURG RGNL (CKI)

TAKEOFF MINIMUMS AND (OBSTACLE) DEPARTURE PROCEDURES

AMDT 2 17AUG17 (17229) (FAA)

TAKEOFF MINIMUMS:

Rwy 14, 400-2¾ or std. w/ min. climb of 210'/NM to 500.

DEPARTURE PROCEDURE:

Rwy 14, climb heading 140° to 700 before turning north.

TAKEOFF OBSTACLE NOTES:

Rwy 14, tree 23' from DER, 159' right of centerline, 6' AGL/66' MSL.

Parking lot beginning 199' from DER, 478' left of centerline, up to 77' MSL.

Building 359' from DER, 578' left of centerline, 81' MSL.

Tree, pole beginning 880' from DER, 473' left of centerline, up to 142' MSL.

Trees beginning 1083' from DER, 548' right of centerline, up to 130' MSL.

Trees beginning 1181' from DER, 680' left of centerline, up to 145' MSL.

Trees beginning 1574' from DER, 631' left of centerline, up to 152' MSL.

Trees beginning 1918' from DER, 590' right of centerline, up to 138' MSL.

Trees beginning 2175' from DER, 633' right of centerline, up to 142' MSL.

Trees beginning 2701' from DER, 874' right of centerline, up to 151' MSL.

Trees beginning 2896' from DER, 551' left of centerline, up to 159' MSL.

Tree 3483' from DER, 1366' right of centerline, 160' MSL.

Trees beginning 3483' from DER, 597' right of centerline, up to 163' MSL.

Tree 3805' from DER, 596' right of centerline, 165' MSL.

Tower 2.2 NM from DER, 2801' right of centerline, 330' AGL/404' MSL.

Rwy 32, trees beginning 62' from DER, 325' left of centerline, up to 107' MSL.

Trees beginning 126' from DER, 507' right of centerline, up to 86' AGL/150' MSL.

Trees beginning 140' from DER, 427' left of centerline, up to 123' MSL.

Tree 1024' from DER, 733' left of centerline, 143' MSL.

Trees beginning 1138' from DER, 634' left of centerline, up to 147' MSL.

Trees beginning 1249' from DER, 723' right of centerline, up to 158' MSL.

Trees beginning 1472' from DER, 614' right of centerline, up to 162' MSL.

Trees beginning 1877' from DER, 621' left of centerline, up to 148' MSL.

Trees beginning 2328' from DER, 580' left of centerline, up to 153' MSL.

Trees beginning 2541' from DER, 572' left of centerline, up to 155' MSL.

Tree 3442' from DER, 1019' left of centerline, 157' MSL.

KINSTON, NC

KINSTON RGNL JETPORT AT STALLINGS FLD (ISO)

TAKEOFF MINIMUMS AND (OBSTACLE) DEPARTURE PROCEDURES

ORIG 25OCT07 (21168) (FAA)

DEPARTURE PROCEDURE:

Rwy 5, climb heading 050° to 1800 before turning east.

TAKEOFF OBSTACLE NOTES:

Rwy 5, multiple poles 1,521' from DER, 237' right of centerline, up to 64' AGL/137' MSL.

Pole 1625' from DER, 53' left of centerline, 52' AGL/128' MSL.

Multiple trees 1873' from DER, 110' right of centerline, up to 73' AGL/173' MSL.

Rwy 23, multiple trees 770' from DER, 598' left of centerline, up to 87' AGL/186' MSL.

Multiple trees 1092' from DER, 109' right of centerline, up to 49' AGL/148' MSL.

LAKE CITY, SC

LAKE CITY MUNI CJ EVANS FLD (51J)

TAKEOFF MINIMUMS AND (OBSTACLE) DEPARTURE PROCEDURES

ORIG 15MAR07 (21140) (FAA)

TAKEOFF MINIMUMS:

Rwy 1, 500-2½ or std. w/min. climb of 375' per NM to 700.

Rwy 19, 300-1 or std. w/min. climb of 404' per NM to 400.

TAKEOFF OBSTACLE NOTES:

Rwy 1, tree 1474' from DER, 189' right of centerline, 62' AGL/143' MSL.

Multiple towers beginning 1.6 NM from DER, 1285' left of centerline, up to 411' AGL/491' MSL.

Rwy 19, tree 1428' from DER, 225' right of centerline, 53' AGL/134' MSL.

Tank 4906' from DER, 1349' left of centerline, 180' AGL/254' MSL.

LANCASTER, SC

LANCASTER COUNTY-MC WHIRTER FLD (LKR)

TAKEOFF MINIMUMS AND (OBSTACLE) DEPARTURE PROCEDURES

AMDT 2 20AUG15 (22139) (FAA)

TAKEOFF OBSTACLE NOTES:

Rwy 6, trees 176' from DER, 394' left of centerline, up to 27' AGL/526' MSL.

Trees 4704' from DER, 1425' left of centerline, up to 81' AGL/630' MSL.

Rwy 24, trees 73' from DER, 492' left of centerline, up to 18' AGL/467' MSL.

TAKEOFF MINIMUMS (OBSTACLE) DEPARTURE PROCEDURES, AND DIVERSE VECTOR AREA (RADAR VECTORS)

24025

SE-2

TAKEOFF MINIMUMS (OBSTACLE) DEPARTURE PROCEDURES, AND DIVERSE VECTOR AREA (RADAR VECTORS)

24025

LAURENS, SC

LAURENS COUNTY (LUX)

TAKEOFF MINIMUMS AND (OBSTACLE) DEPARTURE PROCEDURES

ORIG 02MAY13 (13122) (FAA)

TAKEOFF OBSTACLE NOTES:

Rwy 8, trees and bushes beginning 72' from DER, 298' right of centerline, up to 68' AGL/787' MSL.

Vehicles on roadway, poles and trees beginning 929' from DER, 5' left of centerline, up to 120' AGL/789' MSL.

Rising terrain and trees beginning 944' from DER, 1' right of centerline, up to 106' AGL/777' MSL.

Vehicles on roadway beginning 955' from DER, left and right of centerline up to 15' AGL/734' MSL.

Building 1013' from DER, 662' right of centerline, 18' AGL/729' MSL.

Fence beginning 1051' from DER, 434' right of centerline, 2' AGL/723' MSL.

Rwy 26, trees beginning 104' from DER, 470' right of centerline, up to 128' AGL/799' MSL.

Trees beginning 580' from DER, 169' left of centerline, up to 117' AGL/766' MSL.

Trees beginning 915' from DER, 113' right of centerline, up to 110' AGL/768' MSL.

LEXINGTON, NC

DAVIDSON COUNTY EXEC (EXX)

TAKEOFF MINIMUMS AND (OBSTACLE) DEPARTURE PROCEDURES

AMDT 1 26JUL12 (23222) (FAA)

TAKEOFF MINIMUMS:

Rwy 6, 300-1 or std w/min climb of 384' per NM to 1000.

TAKEOFF OBSTACLE NOTES:

Rwy 6, trees beginning 917' from DER 34' right of centerline, up to 100' AGL/856' MSL.

Trees beginning 158' from DER, 8' left of centerline, up to 100' AGL/859' MSL.

Tanks 1520' from DER, 121' left of centerline, up to 110' AGL/755' MSL.

Rwy 24, tree 53' from DER, 472' left of centerline, 100' AGL/774' MSL.

Terrain beginning 150' from DER, 223' right of centerline, 754' MSL.

LINCOLN, NC

LINCOLN COUNTY RGNL (IPJ)

TAKEOFF MINIMUMS AND (OBSTACLE) DEPARTURE PROCEDURES

AMDT 2 20AUG15 (15232) (FAA)

DEPARTURE PROCEDURE:

Rwy 5, climb heading 063° to 2000 before proceeding on course.**Rwy 23**, climb heading 243° to 2800 before turning left.

TAKEOFF OBSTACLE NOTES:

Rwy 5, trees beginning 1913' from DER, 330' left of centerline, up to 75' AGL/954' MSL.**Rwy 23**, trees beginning 2068' from DER, 479' right of centerline, up to 102' AGL/1001' MSL.

Trees 2572' from DER, 42' left of centerline, up to 87' AGL/986' MSL.

Trees 5326' from DER, 1643' right of centerline, up to 88' AGL/1027' MSL.

LORIS, SC

TWIN CITY (5J9)

TAKEOFF MINIMUMS AND (OBSTACLE) DEPARTURE PROCEDURES

ORIG 06MAY10 (10126) (FAA)

TAKEOFF OBSTACLE NOTES:

Rwy 8, vehicles on roadway 18' from DER, 127' right of centerline, up to 15' AGL/119' MSL.

Trees beginning 159' from DER, 208' right of centerline, up to 100' AGL/204' MSL.

Trees beginning 169' from DER, 314' left of centerline, up to 100' AGL/204' MSL.

Rwy 26, vehicles on roadway 9' from DER, 113' left of centerline, up to 15' AGL/119' MSL.

Trees beginning 20' from DER, 182' left of centerline, up to 100' AGL/204' MSL.

Hangar 81' from DER, 267' right of centerline, 50' AGL/154' MSL.

Aircraft 87' from DER, 171' right of centerline, up to 30' AGL/134' MSL.

Building 665' from DER, 139' left of centerline, 30' AGL/134' MSL.

Building 1359' from DER, 226' right of centerline, 30' AGL/134' MSL.

LOUISBURG, NC

TRIANGLE NORTH EXEC (LHZ)

TAKEOFF MINIMUMS AND (OBSTACLE) DEPARTURE PROCEDURES

ORIG 20OCT11 (21280) (FAA)

DEPARTURE PROCEDURE:

Rwy 5, climb heading 046° to 1900 before turning right.

TAKEOFF OBSTACLE NOTES:

Rwy 5, trees beginning 154' from DER, 516' right of centerline, up to 99' AGL/399' MSL.

Trees beginning 166' from DER, 492' left of centerline, up to 75' AGL/415' MSL.

Terrain 471' from DER, 394' left of centerline, 345' MSL.

Rwy 23, vehicle on road 98' from DER, 457' right of centerline, up to 15' AGL/377' MSL.

Power line 760' from DER, 635' right of centerline, 55' AGL/405' MSL.

TAKEOFF MINIMUMS (OBSTACLE) DEPARTURE PROCEDURES, AND DIVERSE VECTOR AREA (RADAR VECTORS)

24025

SE-2

TAKEOFF MINIMUMS (OBSTACLE) DEPARTURE PROCEDURES, AND DIVERSE VECTOR AREA (RADAR VECTORS)

24025

LUMBERTON, NC

LUMBERTON RGNL (LBT)

TAKEOFF MINIMUMS AND (OBSTACLE) DEPARTURE PROCEDURES

AMDT 3 16OCT14 (14289) (FAA)

TAKEOFF MINIMUMS:

Rwy 31, 300-1 or std. w/min. climb of 250' per NM to 400 or alternatively, with std. takeoff minimums and a normal 200' per NM climb gradient, takeoff must occur no later than 2000' prior to DER.

TAKEOFF OBSTACLE NOTES:

Rwy 5, utility 29' from DER, 117' left of centerline, 3' AGL/124' MSL.

Trees beginning 93' from DER, 335' right of centerline, up to 55' AGL/180' MSL.

Trees beginning 1780' from DER, left and right of centerline, up to 93' AGL/219' MSL.

Rwy 13, vehicles on roadway beginning 29' from DER, 392' right of centerline, up to 15' AGL/139' MSL.

Vehicles on roadway beginning 340' from DER, 123' left of centerline, up to 15' AGL/139' MSL.

Trees beginning 486' from DER, left and right of centerline, up to 100' AGL/219' MSL.

Rwy 23, trees beginning 59' from DER, 119' right of centerline, up to 107' AGL/233' MSL.

Trees beginning 3274' from DER, 31' left of centerline, up to 91' AGL/217' MSL.

Rwy 31, vehicles on roadway beginning 258' from DER, 532' left of centerline, up to 15' AGL/139' MSL.

Building 510' from DER, 612' left of centerline, 40' AGL/164' MSL.

Trees beginning 436' from DER, left and right of centerline, up to 100' AGL/224' MSL.

Tower 5168' from DER, 1713' right of centerline, 150' AGL/286' MSL.

MACKALL AAF (KHFF)

CAMP MACKALL, NC

TAKEOFF MINIMUMS AND (OBSTACLE) DEPARTURE PROCEDURES

AMDT 1 15JUN23 (23166) (USA)

TAKEOFF MINIMUMS:

Rwy 30, 300-1¼ or std. w/min. climb of 230' per NM to 800.

Rwys 4, 16, 22, 34, NA-non-IFR runways.

TAKEOFF OBSTACLE NOTES:

Rwy 12, tree 324' from DER, 536' left of centerline, 369' MSL.

Tree 1143' from DER, 641' left of centerline, 419' MSL.

Tree 1307' from DER, 683' left of centerline, 393' MSL.

Tree 1831' from DER, 274' right of centerline, 386' MSL.

Tree 1405' from DER, 604' right of centerline, 373' MSL.

Dirt road 148' from DER, 87' right of centerline, 340' MSL.

Rwy 30, tree 2189' from DER, 665' left of centerline, 480' MSL.

Tree 1325' from DER, 754' right of centerline, 454' MSL.

Tree 1341' from DER, 663' left of centerline, 449' MSL.

Tree 2370' from DER, 345' right of centerline, 436' MSL.

Tree 1412' from DER, 547' left of centerline, 421' MSL.

Tree 828' from DER, 444' right of centerline, 20' AGL/396' MSL.

Dirt road 175' from DER, 368' left of centerline, 382' MSL.

Tree 1324' from DER, 783' right of centerline, 435' MSL.

MANNING, SC

SANTEE COOPER RGNL (MNI)

TAKEOFF MINIMUMS AND (OBSTACLE) DEPARTURE PROCEDURES

ORIG 12FEB09 (09043) (FAA)

TAKEOFF OBSTACLE NOTES:

Rwy 2, trees beginning at DER, 480' right of centerline, up to 100' AGL/229' MSL.

Trees beginning 16' from DER, 221' left of centerline, up to 100' AGL/209' MSL.

Vehicle on road 85' from DER, 468' right of centerline, 15' AGL/117' MSL.

Rwy 20, trees beginning 125' from DER, 289' right of centerline, up to 100' AGL/179' MSL.

Trees beginning 86' from DER, 136' left of centerline, up to 100' AGL/189' MSL.

Vehicle on road 250' from DER, on centerline, 15' AGL/110' MSL.

MANTEO, NC

DARE COUNTY RGNL (MQI)

TAKEOFF MINIMUMS AND (OBSTACLE) DEPARTURE PROCEDURES

AMDT 2 15DEC11 (11349) (FAA)

TAKEOFF MINIMUMS:

Rwy 17, 300-1¼ or std. w/min. climb of 250' per NM to 300.

Rwy 35, 300-1¼ or std. w/min. climb of 260' per NM to 300.

TAKEOFF OBSTACLE NOTES:

Rwy 5, multiple trees beginning 585' from DER, 417' left and right of centerline, up to 100' AGL/109' MSL.

Rwy 35, multiple trees beginning 23' from DER, 182' right and left of centerline, up to 100' AGL/116' MSL.

Building 267' from DER, 410' right of centerline, 20' AGL/35' MSL.

Ship 1 NM from DER, on centerline, 208' AGL/208' MSL.

TAKEOFF MINIMUMS (OBSTACLE) DEPARTURE PROCEDURES, AND DIVERSE VECTOR AREA (RADAR VECTORS)

24025

SE-2

22 FEB 2024 to 21 MAR 2024

22 FEB 2024 to 21 MAR 2024

TAKEOFF MINIMUMS (OBSTACLE) DEPARTURE PROCEDURES, AND DIVERSE VECTOR AREA (RADAR VECTORS)

24025

MARION, SC

MARION COUNTY (MAO)

TAKEOFF MINIMUMS AND (OBSTACLE) DEPARTURE PROCEDURES

AMDT 2 13NOV14 (14317) (FAA)

DEPARTURE PROCEDURE:

Rwy 4, climb on heading 058° to 2000 before turning.

TAKEOFF OBSTACLE NOTES:

Rwy 4, road with vehicle 89' from DER, 241' left of centerline, 15' AGL/103' MSL.

Trees and bushes beginning 8' from DER, 301' left of centerline, up to 15' AGL/92' MSL.

Buildings beginning 271' from DER, 385' left of centerline up to 25' AGL/114' MSL.

Trees and poles beginning 297' from DER, 401' left of centerline, up to 51' AGL/140' MSL.

Trees beginning 1311' from DER, 411' left of centerline, up to 107' AGL/201' MSL.

Trees and bushes beginning 14' from DER, 258' right of centerline, up to 67' AGL/154' MSL.

Trees, buildings, and poles beginning 511' from DER, 216' right of centerline, up to 125' AGL/214' MSL.

Trees beginning 2026' from DER, 7' right of centerline, up to 91' AGL/188' MSL.

Rwy 22, road with vehicle 96' from DER, 489' left of centerline, 15' AGL/104' MSL.

Trees beginning 226' from DER, 302' left of centerline, up to 48' AGL/136' MSL.

Trees beginning 1019' from DER, 372' left of centerline, up to 47' AGL/135' MSL.

Bush 4' from DER, 354' right of centerline, 12' AGL/101' MSL.

Trees beginning 2624' from DER, 811' right of centerline, up to 109' AGL/197' MSL.

MAXTON, NC

LAURINBURG/MAXTON (MEB)

TAKEOFF MINIMUMS AND (OBSTACLE) DEPARTURE PROCEDURES

ORIG 25OCT07 (22027) (FAA)

TAKEOFF OBSTACLE NOTES:

Rwy 5, road 606' from DER, on centerline, 15' AGL/224' MSL.

Trees 1002' from DER, 474' left of centerline, 67' AGL/267' MSL.

Rwy 13, aircraft 762' from DER, 762' left of centerline, 58' AGL/266' MSL.

Rwy 23, tree 1011' from DER, 512' right of centerline, 30' AGL/246' MSL.

Rwy 31, trees beginning 1014' from DER, 58' left of centerline, up to 54' AGL/271' MSL.

MC ENTIRE JNGB (MMT)

EASTOVER, SC

TAKEOFF MINIMUMS AND (OBSTACLE) DEPARTURE PROCEDURES

AMDT 2 29MAY14 (14149)

TAKEOFF MINIMUMS:

Rwy 5, Standard with CG of 310 ft/NM to 2700 or 300-2 with min climb of 250 ft/NM to 2700 (Provided a ceiling and visibility to see and avoid a 40:1 penetration within the ICA (extended) and a climb gradient to avoid a 40:1 penetration outside the ICA (extended)).

Rwy 32, Standard with CG of 230ft/NM to 2700.

DEPARTURE PROCEDURE:

Rwy 5, depart on a track of 050 to 2700' before turning on course, or as directed by ATC.

Rwy 32, depart on a track of 320 to 700' MSL before turning on course, or as directed by ATC. Departing eastbound, complete turn within 4 NM to avoid R-6001, if unable, advise Control Tower prior to taxi.

TAKEOFF OBSTACLE NOTES:

Rwy 5, Helicopters parked from 198' to 552' from DER, 306' to 618' left of centerline, up to 19' AGL/274' MSL.

Multiple trees left of centerline, beginning 2390' out to 1.5 NM from DER, 93' to 2082' left of centerline, 0' AGL/385' MSL up to 551' MSL.

Multiple trees right of centerline, beginning 2207' out to 4124' from DER, 232' to 905' right of centerline, 0' AGL/377' MSL up to 399' MSL.

Rwy 14, Multiple trees left of centerline, beginning 2316' out to 4208' from DER, 774' to 1107' left of centerline, 0' AGL/325' MSL up to 359' MSL.

Pylon 3282' from DER, 1553' left of centerline, 79' AGL/288' MSL.

Multiple trees right of centerline, beginning 2202' out to 3374' from DER, 989' to 1139' right of centerline, 0' AGL/339' MSL up to 349' MSL.

Aircraft parked 42' from DER, 544' right of centerline, 0' AGL/255' MSL.

Pylon 2668' from DER, 1714' right of centerline, 79' AGL/286' MSL.

Rwy 23, Multiple trees left of centerline, beginning 2482' out to 3574' from DER, 186' to 1423' left of centerline, 130' AGL/351' MSL up to 363' MSL.

Wind sensor 500' from DER, 495' left of centerline, 33' AGL/275' MSL.

Multiple trees right of centerline, beginning 2470' out to 3968' from DER, 419' to 1200' right of centerline, 0' AGL/343' MSL up to 367' MSL.

Light pole 2172' from DER, 615' to 791' right of centerline, 26' AGL/274' MSL.

Rwy 32, Multiple trees left of centerline, beginning 2267' out to 5053' from DER, 68' to 1650' left of centerline, 0' AGL/335' MSL up to 381' MSL.

Multiple trees right of centerline, beginning 1774' out to 2207' from DER, 475' to 820' right of centerline, 0' AGL/343' MSL up to 355' MSL.

22 FEB 2024 to 21 MAR 2024

22 FEB 2024 to 21 MAR 2024

TAKEOFF MINIMUMS (OBSTACLE) DEPARTURE PROCEDURES, AND DIVERSE VECTOR AREA (RADAR VECTORS)

24025

SE-2

TAKEOFF MINIMUMS (OBSTACLE) DEPARTURE PROCEDURES, AND DIVERSE VECTOR AREA (RADAR VECTORS)

24025

MOCKSVILLE, NC

TWIN LAKES (8A7)

TAKEOFF MINIMUMS AND (OBSTACLE) DEPARTURE PROCEDURES

ORIG 02AUG07 (07214) (FAA)

TAKEOFF MINIMUMS:

Rwy 27, 300-1

TAKEOFF OBSTACLE NOTES:

Rwy 9, numerous trees beginning 35' from DER, 27' right of centerline, up to 100' AGL/939' MSL.

Numerous trees beginning 200' from DER, 164' left of centerline, up to 100' AGL/919' MSL.

Rwy 27, numerous trees beginning 200' from DER, 78' right of centerline, up to 100' AGL/929' MSL.

Numerous trees beginning 616' from DER, 77' left of centerline, up to 100' AGL/909' MSL.

MONCKS CORNER, SC

BERKELEY COUNTY (MKS)

TAKEOFF MINIMUMS AND (OBSTACLE) DEPARTURE PROCEDURES

ORIG 15JAN09 (09015) (FAA)

TAKEOFF MINIMUMS:

Rwy 5, 300-1½ or std. w/ min. climb of 215' per NM to 400.

TAKEOFF OBSTACLE NOTES:

Rwy 5, trees beginning 17' from DER, 102' right of centerline, up to 99' AGL/158' MSL.

Terrain 30' from DER, 478' left of centerline, 79' MSL.

Trees beginning 964' from DER, 66' left of centerline, up to 108' AGL/167' MSL.

Poles beginning 467' from DER, 480' left of centerline, up to 24' AGL/103' MSL.

Tower 1.4 NM from DER, 530' left of centerline, up to 228' AGL/292' MSL.

Rwy 23, trees beginning abeam DER, 361' right of centerline, up to 100' AGL/199' MSL.

Transmission poles beginning 1320' from DER, 249' right of centerline, up to 63' AGL/142' MSL.

Terrain 21' from DER, 125' left of centerline, 76' MSL.

Trees beginning 1141' from DER, 47' left of centerline, up to 84' AGL/163' MSL.

Transmission pole 2503' from DER, 115' left of centerline, 62' AGL/141' MSL.

MONROE, NC

CHARLOTTE/MONROE EXEC (EQY)

TAKEOFF MINIMUMS AND (OBSTACLE) DEPARTURE PROCEDURES

AMDT 2 20AUG15 (22083) (FAA)

TAKEOFF OBSTACLE NOTES:

Rwy 5, trees beginning 24' from DER, 308' right of centerline, up to 77' AGL/736' MSL.

Trees beginning 70' from DER, 218' left of centerline, up to 27' AGL/686' MSL.

Trees beginning 606' from DER, 58' right of centerline, up to 33' AGL/692' MSL.

Poles and trees beginning 651' from DER, 19' left of centerline, up to 44' AGL/713' MSL.

Trees beginning 1223' from DER, 436' right of centerline, up to 62' AGL/721' MSL.

Trees beginning 2151' from DER, 79' left of centerline, up to 89' AGL/748' MSL.

Rwy 23, runway light 12' from DER, 31' left of centerline, 2' AGL/684' MSL.

Trees beginning 1714' from DER, 203' left of centerline, up to 97' AGL/746' MSL.

Trees 2366' from DER, 771' right of centerline, up to 86' AGL/755' MSL.

MOORESVILLE, NC

LAKE NORMAN AIRPARK (14A)

TAKEOFF MINIMUMS AND (OBSTACLE) DEPARTURE PROCEDURES

ORIG 23NOV06 (06327) (FAA)

TAKEOFF MINIMUMS:

Rwy 14, std. w/ a min. climb of 294' per NM to 2900 or 1300-2½ for climb in visual conditions.

DEPARTURE PROCEDURE:

Rwy 14, for climb in visual conditions: cross Lake Norman Airpark at or above 2000' MSL before proceeding on course.**Rwy 32**, climb heading 324° to 1300 before proceeding on course.

TAKEOFF OBSTACLE NOTES:

Rwy 14, terrain and multiple trees beginning 197' from DER, 308' left of centerline, up to 200' AGL/1099' MSL. Building and

multiple trees beginning 158' from DER, 258' right of centerline, up to 100' AGL/979' MSL.

Rwy 32, tree 559' from DER, on centerline, 42' AGL/851' MSL.

Multiple trees beginning 47' from DER, 34' left of centerline, up to 101' AGL/890' MSL.

Multiple trees beginning 526' from DER, 31' right of centerline, up to 97' AGL/886' MSL.

22 FEB 2024 to 21 MAR 2024

22 FEB 2024 to 21 MAR 2024

TAKEOFF MINIMUMS (OBSTACLE) DEPARTURE PROCEDURES, AND DIVERSE VECTOR AREA (RADAR VECTORS)

24025

SE-2

TAKEOFF MINIMUMS (OBSTACLE) DEPARTURE PROCEDURES, AND DIVERSE VECTOR AREA (RADAR VECTORS)

24025

MORGANTON, NC

FOOTHILLS RGNL (MRN)

TAKEOFF MINIMUMS AND (OBSTACLE) DEPARTURE PROCEDURES

AMDT 2 30JUN11 (11181) (FAA)

TAKEOFF MINIMUMS:

Rwy 21, std. w/min. climb of 225' per NM to 3800.

DEPARTURE PROCEDURE:

Rwy 3, climbing left turn direct FIQ NDB, thence ...

Rwy 21, climb direct FIQ NDB, thence ...

... continue climbing in holding pattern (Southwest, left turns, 031° inbound) to 5000 before proceeding on course.

TAKEOFF OBSTACLE NOTES:

Rwy 3, trees beginning 167' from DER, 388' right of centerline, up to 100' AGL/1379' MSL.

Rising terrain beginning 138' from DER, 3' right of centerline, up to 1280' MSL.

Trees beginning 1180' from DER, 421' left of centerline, up to 68' AGL/1327' MSL.

Rising terrain beginning 39' from DER, 223' left of centerline, up to 1277' MSL.

Rwy 21, trees beginning 2329' from DER, 1061' right of centerline, up to 100' AGL/1339' MSL.

Trees beginning 1681' from DER, 883' left of centerline, up to 100' AGL/1379' MSL.

MOUNT AIRY, NC

MOUNT AIRY/SURRY COUNTY (MWK)

TAKEOFF MINIMUMS AND (OBSTACLE) DEPARTURE PROCEDURES

AMDT 4 08NOV18 (18312) (FAA)

TAKEOFF MINIMUMS:

Rwy 36, std. w/min. climb of 250' per NM to 3900, or 1600-3 for climb in visual conditions.

DEPARTURE PROCEDURE:

Rwy 18, climb heading 180° to 2900 before turning left.

Rwy 36, climb heading 360° to 2200 before proceeding on course.

VCOA:

Rwy 36, obtain ATC approval for VCOA when requesting IFR clearance. Climb in visual conditions to cross Mount Airy/

Surry County Airport at or above 2700 MSL before proceeding on course.

TAKEOFF OBSTACLE NOTES:

Rwy 18, vehicles on road beginning 50' from DER, 378' right of centerline, up to 1222' MSL.

Trees beginning 72' from DER, 365' left of centerline, up to 1254' MSL.

Tree 189' from DER, 498' right of centerline, 1231' MSL.

Tree 219' from DER, 528' right of centerline, 1249' MSL.

Trees beginning 318' from DER, 328' right of centerline, up to 1252' MSL.

Trees beginning 495' from DER, 354' left of centerline, up to 1259' MSL.

Trees beginning 593' from DER, 170' right of centerline, up to 1253' MSL.

Trees beginning 1365' from DER, 329' right of centerline, up to 1263' MSL.

Building, tree beginning 1841' from DER, 96' left of centerline, up to 47' AGL/1260' MSL.

Trees beginning 2091' from DER, 151' left of centerline, up to 73' AGL/1270' MSL.

Tree 2110' from DER, 166' left of centerline, up to 77' AGL/1271' MSL.

Trees beginning 2134' from DER, 95' left of centerline, up to 81' AGL/1272' MSL.

Tree 2668' from DER, 367' left of centerline, 56' AGL/1276' MSL.

Tree 2680' from DER, 140' left of centerline, 71' AGL/1278' MSL.

Tree 2683' from DER, 306' left of centerline, 61' AGL/1280' MSL.

Trees beginning 2684' from DER, 120' left of centerline, up to 1290' MSL.

Trees beginning 2716' from DER, 265' left of centerline, up to 1304' MSL.

Trees beginning 2849' from DER, 53' left of centerline, up to 89' AGL/1316' MSL.

Tree 3196' from DER, 40' right of centerline, 98' AGL/1289' MSL.

Rwy 36, terrain 34' from DER, 428' left of centerline, 1279' MSL.

Terrain 35' from DER, 325' right of centerline, 1277' MSL.

Terrain beginning 94' from DER, 312' right of centerline, up to 1285' MSL.

Terrain beginning 116' from DER, 390' left of centerline, up to 1287' MSL.

Fence beginning 170' from DER, 465' right of centerline, up to 4' AGL/1289' MSL.

Vehicles on road, pole, tree beginning 537' from DER, 451' left of centerline, up to 1332' MSL.

Tree 820' from DER, 580' left of centerline, 1344' MSL.

Building 941' from DER, 520' right of centerline, 1321' MSL.

Trees beginning 987' from DER, 455' left of centerline, up to 1345' MSL.

Tree 1151' from DER, 724' right of centerline, 1327' MSL.

Trees beginning 1157' from DER, 51' left of centerline, up to 1348' MSL.

Trees beginning 1193' from DER, 14' right of centerline, up to 1339' MSL.

Trees, pole beginning 2211' from DER, 69' right of centerline, up to 69' AGL/1340' MSL.

Tree 2251' from DER, 201' right of centerline, 74' AGL/1345' MSL.

22 FEB 2024 to 21 MAR 2024

22 FEB 2024 to 21 MAR 2024

TAKEOFF MINIMUMS (OBSTACLE) DEPARTURE PROCEDURES, AND DIVERSE VECTOR AREA (RADAR VECTORS)

24025

SE-2

TAKEOFF MINIMUMS (OBSTACLE) DEPARTURE PROCEDURES, AND DIVERSE VECTOR AREA (RADAR VECTORS)

24025

MOUNT OLIVE, NC

MOUNT OLIVE MUNI (W40)

TAKEOFF MINIMUMS AND (OBSTACLE) DEPARTURE PROCEDURES

AMDT 2 07MAR13 (13066) (FAA)

TAKEOFF MINIMUMS:

Rwy 23, 300-1 or std. w/ min. climb of 334' per NM to 500.

TAKEOFF OBSTACLE NOTES:

Rwy 5, trees beginning 971' from DER, 27' left of centerline, up to 100' AGL/267' MSL.

Trees beginning 2209' from DER, 25' right of centerline, up to 100' AGL/262' MSL.

Pole 454' from DER, 407' left of centerline, 17' AGL/191' MSL.

Vehicle on road 363' from DER, 115' left of centerline, 15' AGL/179' MSL.

Vehicle on road 321' from DER, 106' right of centerline, 15' AGL/181' MSL.

GND 14' from DER, 107' right of centerline, 167' MSL.

Rwy 23, tower 4535' from DER, 445' right of centerline, 196' AGL/355' MSL.

Trees beginning 185' from DER, 108' left of centerline, up to 100' AGL/253' MSL.

Trees beginning 865' from DER, 226' right of centerline, up to 100' AGL/259' MSL.

Buildings beginning 110' from DER, 323' left of centerline, up to 25' AGL/181' MSL.

Poles beginning 279' from DER, 43' left of centerline, up to 20' AGL/184' MSL.

MOUNT PLEASANT, SC

MT PLEASANT RGNL-FAISON FLD (LRO)

TAKEOFF MINIMUMS AND (OBSTACLE) DEPARTURE PROCEDURES

AMDT 1 06MAY10 (21140) (FAA)

DEPARTURE PROCEDURE:

Rwy 17, climb heading 174° to 1400 before proceeding on course.

Rwy 35, climb heading 354° to 1900 before turning right.

TAKEOFF OBSTACLE NOTES:

Rwy 17, AAO 3.8 NM from DER, 4834' right of centerline, 200' AGL/210' MSL.

Rwy 35, tree 1900' from DER, 921' left of centerline, 84' AGL/96' MSL.

Tree 3043' from DER, 401' right of centerline, 83' AGL/95' MSL.

MYRTLE BEACH, SC

MYRTLE BEACH INTL (MYR)

TAKEOFF MINIMUMS AND (OBSTACLE) DEPARTURE PROCEDURES

AMDT 2 11FEB10 (10042) (FAA)

TAKEOFF OBSTACLE NOTES:

Rwy 18, trees beginning 1770' from DER, 664' left of centerline, up to 60' AGL/88' MSL.

NEW BERN, NC

COASTAL CAROLINA RGNL (EWN)

TAKEOFF MINIMUMS AND (OBSTACLE) DEPARTURE PROCEDURES

AMDT 4 15NOV12 (12320) (FAA)

TAKEOFF MINIMUMS:

Rwy 14, 300-1 or std. w/ min. climb of 240' per NM to 300, or alternatively, with standard takeoff minimums and a normal 200' per NM climb gradient, takeoff must occur no later than 1900' prior to DER.

Rwy 32, std. w/ min. climb of 215' per NM to 800, or 1100-2½ for climb in visual conditions.

DEPARTURE PROCEDURE:

Rwy 4, climb heading 039° to 600 before turning north.

Rwy 32, climb heading 316° to 800 before turning north, or for climb in visual conditions cross coastal Carolina RGNL airport at or above 1000 MSL before proceeding on course. When executing VCOA, notify ATC prior to departure.

TAKEOFF OBSTACLE NOTES:

Rwy 4, signs beginning 9' from DER, 429' right of centerline, up to 45' AGL/61' MSL.

Vehicles on road beginning 87' from DER, 499' left of centerline, up to 17' AGL/27' MSL.

Trees, sign and vertical structure beginning 648' from DER, left and right of centerline, up to 91' AGL/104' MSL.

Rwy 14, trees beginning 92' from DER, 257' left of centerline, up to 77' AGL/92' MSL.

Trees and pole beginning 226' from DER, 146' right of centerline, up to 98' AGL/118' MSL.

Trees and tower beginning 3335' from DER, 118' left of centerline, up to 120' AGL/145' MSL.

Antenna 5034' from DER, 1239' left of centerline, up to 147' AGL/170' MSL.

Rwy 22, bush beginning 101' from DER, 288' left of centerline, up to 6' AGL/16' MSL.

Trees beginning 803' from DER, 56' left of centerline, up to 115' AGL/116' MSL.

Trees beginning 809' from DER, 87' right of centerline, up to 134' AGL/139' MSL.

Trees beginning 2977' from DER, left and right of centerline, up to 115' AGL/122' MSL.

Rwy 32, bush and trees beginning 141' from DER, 236' left of centerline, up to 68' AGL/78' MSL.

Trees beginning 718' from DER, right of centerline, up to 101' AGL/111' MSL.

Trees and transmission tower 744' from DER, 31' left of centerline, up to 116' AGL/126' MSL.

22 FEB 2024 to 21 MAR 2024

22 FEB 2024 to 21 MAR 2024

TAKEOFF MINIMUMS (OBSTACLE) DEPARTURE PROCEDURES, AND DIVERSE VECTOR AREA (RADAR VECTORS)

24025

SE-2

TAKEOFF MINIMUMS (OBSTACLE) DEPARTURE PROCEDURES, AND DIVERSE VECTOR AREA (RADAR VECTORS)

24025

NEWBERRY, SC

NEWBERRY COUNTY (EOE)

TAKEOFF MINIMUMS AND (OBSTACLE) DEPARTURE PROCEDURES

AMDT 1 20NOV08 (08325) (FAA)

TAKEOFF OBSTACLE NOTES:

Rwy 4, multiple trees beginning 1895' from DER, left and right of centerline, up to 100' AGL/659' MSL.

Rwy 22, multiple trees beginning 500' from DER, left and right of centerline, up to 100' AGL/629' MSL.

NORTH AF AUX (KXNO)

NORTH, SC

TAKEOFF MINIMUMS AND (OBSTACLE) DEPARTURE PROCEDURES

ORIG 02MAR17 (17061)

CAUTION:

Rwy 5/23 diverse departure procedures not authorized at night.

TAKEOFF OBSTACLE NOTES:

Rwy 6, possible C-5 on taxiway B, 687' from DER, 535' right of centerline, 65' AGL/ 386' MSL.

Pylon 2363' from DER, 1572' left of centerline, 79' AGL/403' MSL.

Multiple towers 2450' to 2821' from DER, 922' to 1127' left of centerline, 53' AGL/381' MSL.

Trees 1409' to 3007' from DER, 162' to 1002' left of centerline, 104' AGL/408' MSL.

Rwy 24, pylon 1729' from DER, 1456' right of centerline, 79' AGL/325' MSL.

Trees 1092' to 2049' from DER, 344' to 885' right of centerline, 91' AGL/335' MSL.

NORTH MYRTLE BEACH, SC

GRAND STAND (CRE)

TAKEOFF MINIMUMS AND (OBSTACLE) DEPARTURE PROCEDURES

ORIG 14JAN10 (10014) (FAA)

TAKEOFF OBSTACLE NOTES:

Rwy 5, vehicles on roadway 8' from DER, 455' right of centerline, up to 16' AGL/41' MSL.

Trees beginning 1782' from DER, 6' right of centerline, up to 74' AGL/103' MSL.

Rwy 23, trees beginning 43' from DER, 399' right of centerline, up to 33' AGL/58' MSL.

Sign 60' from DER, 205' left of centerline, 11' AGL/36' MSL.

Trees beginning 1393' from DER, 277' left of centerline, up to 62' AGL/88' MSL.

NORTH WILKESBORO, NC

WILKES COUNTY (UKF)

TAKEOFF MINIMUMS AND (OBSTACLE) DEPARTURE PROCEDURES

AMDT 1A 20JUN19 (19171) (FAA)

TAKEOFF MINIMUMS:

Rwy 1, std. w/min. climb of 330' per NM to 5000 or 2000-3 for climb in visual conditions.

Rwy 19, std. w/min. climb of 230' per NM to 3200 or 2000-3 for climb in visual conditions.

DEPARTURE PROCEDURE:

Rwy 19, climb heading 187° to 3200 before proceeding on course.

VCOA:

All runways, obtain ATC approval for VCOA when requesting IFR clearance. Climb in visual conditions to cross Wilkes

County airport at or above 3200 before proceeding on course.

TAKEOFF OBSTACLE NOTES:

Rwy 1, trees beginning 2' from DER, 309' right of centerline, up to 1344' MSL.

Tree 44' from DER, 447' left of centerline, 1351' MSL.

Tree 65' from DER, 501' left of centerline, 1352' MSL.

Trees beginning 171' from DER, 495' left of centerline, up to 1364' MSL.

Trees beginning 294' from DER, 468' left of centerline, up to 1367' MSL.

Trees, building beginning 324' from DER, 263' right of centerline, up to 1358' MSL.

Tree 425' from DER, 405' right of centerline, 1367' MSL.

Tree 484' from DER, 491' right of centerline, 1378' MSL.

Trees beginning 520' from DER, 263' right of centerline, up to 1379' MSL.

Trees, pole beginning 587' from DER, 188' left of centerline, up to 1370' MSL.

Trees beginning 760' from DER, 263' right of centerline, up to 1381' MSL.

Trees beginning 1014' from DER, 146' right of centerline, up to 1389' MSL.

Tree 1417' from DER, 537' left of centerline, 1374' MSL.

Tree 1452' from DER, 641' left of centerline, 1384' MSL.

Trees beginning 1528' from DER, 1' left of centerline, up to 1403' MSL.

Trees, poles beginning 2154' from DER, 423' left of centerline, up to 1421' MSL.

Trees, pole beginning 2369' from DER, 357' left of centerline, up to 1423' MSL.

Trees beginning 2784' from DER, 497' right of centerline, up to 1393' MSL.

CONT

22 FEB 2024 to 21 MAR 2024

22 FEB 2024 to 21 MAR 2024

TAKEOFF MINIMUMS (OBSTACLE) DEPARTURE PROCEDURES, AND DIVERSE VECTOR AREA (RADAR VECTORS)

24025

SE-2

TAKEOFF MINIMUMS (OBSTACLE) DEPARTURE PROCEDURES, AND DIVERSE VECTOR AREA (RADAR VECTORS)

24025

NORTH WILKESBORO, NC (CON'T)

WILKES COUNTY (UKF) (CON'T)

Rwy 1 (CON'T), trees beginning 3436' from DER, 726' right of centerline, up to 1406' MSL.

Trees beginning 3646' from DER, 1115' right of centerline, up to 1413' MSL.

Tree 4982' from DER, 1807' left of centerline, 1428' MSL.

Trees beginning 5360' from DER, 187' right of centerline, up to 1443' MSL.

Tree 5510' from DER, 363' right of centerline, 1448' MSL.

Tree 5558' from DER, 430' right of centerline, 1451' MSL.

Trees beginning 5517' from DER, 290' right of centerline, up to 1460' MSL.

Rwy 19, trees beginning 33' from DER, 321' right of centerline, up to 1262' MSL.

Trees beginning 135' from DER, 475' left of centerline, up to 1298' MSL.

Trees beginning 173' from DER, 326' right of centerline, up to 1266' MSL.

Tree 990' from DER, 652' left of centerline, 1304' MSL.

Tree 1037' from DER, 469' right of centerline, 1274' MSL.

OAK ISLAND, NC

CAPE FEAR RGNL JETPORT / HOWIE FRANKLIN FLD (SUT)

TAKEOFF MINIMUMS AND (OBSTACLE) DEPARTURE PROCEDURES

AMDT 1 28JUN12 (12180) (FAA)

TAKEOFF MINIMUMS:

Rwy 5, 400-3 or std. w/min. climb of 210' per NM to 600, or alternatively with standard takeoff minimums and a normal 200' per NM climb gradient, takeoff must occur no later than 1500' prior to DER.

TAKEOFF OBSTACLE NOTES:

Rwy 5, building, trees and towers beginning 18' from DER, 21' right of centerline, up to 92' AGL/97' MSL.

Trees beginning 257' from DER, 21' left of centerline, up to 89' AGL/104' MSL.

Rwy 23, trees beginning 42' from DER, left and right of centerline, up to 92' AGL/102' MSL.

ORANGEBURG, SC

ORANGEBURG MUNI (OGB)

TAKEOFF MINIMUMS AND (OBSTACLE) DEPARTURE PROCEDURES

AMDT 4 25APR19 (19115) (FAA)

TAKEOFF MINIMUMS:

Rwy 35, 300-2½ or std. w/min. climb of 240' per NM to 600.

DEPARTURE PROCEDURE:

Rwy 5, climb heading 049° to 1000 before turning left.

Rwy 35, climb heading 354° to 800 before turning right.

TAKEOFF OBSTACLE NOTES:

Rwy 5, tree 190' from DER, 474' left of centerline, 279' MSL.

Tree 302' from DER, 384' left of centerline, 286' MSL.

Trees beginning 421' from DER, 386' left of centerline, up to 289' MSL.

Traverse way 769' from DER, 406' right of centerline, 220' MSL.

Rwy 23, tree 32' from DER, 477' left of centerline, 186' MSL.

Tree 870' from DER, 684' right of centerline, 253' MSL.

Pole 1260' from DER, 127' left of centerline, 52' AGL/202' MSL.

Trees beginning 1647' from DER, 420' right of centerline, up to 259' MSL.

Tree 2195' from DER, 45' left of centerline, 250' MSL.

Tree 2529' from DER, 118' left of centerline, 251' MSL.

Rwy 35, tree 798' from DER, 231' left of centerline, 277' MSL.

Trees beginning 1538' from DER, 241' right of centerline, up to 272' MSL.

Transmission line 3374' from DER, 663' right of centerline, 97' AGL/296' MSL.

Trees beginning 3663' from DER, 1239' right of centerline, up to 301' MSL.

Tower 1.9 NM from DER, 2830' right of centerline, 268' AGL/477' MSL.

OXFORD, NC

HENDERSON/OXFORD (HNZ)

TAKEOFF MINIMUMS AND (OBSTACLE) DEPARTURE PROCEDURES

AMDT 1 05MAR15 (21336) (FAA)

DEPARTURE PROCEDURE:

Rwy 24, climb heading 240° to 1300 before turning right.

TAKEOFF OBSTACLE NOTES:

Rwy 6, trees beginning 263' from DER, 358' left of centerline, up to 68' AGL/558' MSL.

Trees beginning 670' from DER, 496' right of centerline, up to 60' AGL/552' MSL.

Rwy 24, silo, vehicles on road, telephone line, and trees beginning 7' from DER, 353' right of centerline, up to 88' AGL/601' MSL.

Trees beginning 771' from DER, 10' left of centerline, up to 100' AGL/595' MSL.

Trees beginning 1596' from DER, 248' left of centerline, up to 100' AGL/618' MSL.

22 FEB 2024 to 21 MAR 2024

22 FEB 2024 to 21 MAR 2024

TAKEOFF MINIMUMS (OBSTACLE) DEPARTURE PROCEDURES, AND DIVERSE VECTOR AREA (RADAR VECTORS)

24025

SE-2

TAKEOFF MINIMUMS (OBSTACLE) DEPARTURE PROCEDURES, AND DIVERSE VECTOR AREA (RADAR VECTORS)

24025

PAGELAND, SC

PAGELAND (PYG)

TAKEOFF MINIMUMS AND (OBSTACLE) DEPARTURE PROCEDURES

AMDT 1 02MAR17 (17061) (FAA)

TAKEOFF OBSTACLE NOTES:

- Rwy 6**, tree 10' from DER, 407' left of centerline, 601' MSL.
- Tree 38' from DER, 417' right of centerline, 582' MSL.
- Pole 67' from DER, 296' right of centerline, 595' MSL.
- Tree and pole beginning 73' from DER, 188' left of centerline, up to 607' MSL.
- Flag pole 81' from DER, 439' right of centerline, 596' MSL.
- Pole 114' from DER, 381' right of centerline, 597' MSL.
- Tree 199' from DER, 327' right of centerline, 602' MSL.
- Trees beginning 222' from DER, 372' left of centerline, up to 608' MSL.
- Trees and vehicles on road beginning 265' from DER, 401' right of centerline, up to 621' MSL.
- Airport beacon, trees, and pole beginning 323' from DER, 102' right of centerline, up to 627' MSL.
- Trees, bldg, and poles beginning 324' from DER, 345' left of centerline, up to 622' MSL.
- Trees beginning 1235' from DER, 698' left of centerline, up to 630' MSL.
- Trees beginning 1295' from DER, 40' left of centerline, up to 641' MSL.
- Trees beginning 1793' from DER, 167' right of centerline, up to 635' MSL.
- Tree 2177' from DER, 36' left of centerline, 642' MSL.
- Rwy 24**, tree 5' from DER, 287' right of centerline, 573' MSL.
- Tree 16' from DER, 378' right of centerline, 580' MSL.
- Tree and windsock beginning 20' from DER, 148' right of centerline, up to 581' MSL.
- Vehicle on road beginning 42' from DER, 406' left of centerline, up to 571' MSL.
- Tree and pole beginning 55' from DER, 390' left of centerline, up to 600' MSL.
- Trees beginning 111' from DER, 209' right of centerline, up to 587' MSL.
- Tree 138' from DER, 501' left of centerline, 604' MSL.
- Trees, fence, poles, bldg, and vehicles on road beginning 225' from DER, 417' left of centerline, up to 609' MSL.
- Trees beginning 1174' from DER, 364' left of centerline, up to 624' MSL.

PELION, SC

LEXINGTON COUNTY (6J0)

TAKEOFF MINIMUMS AND (OBSTACLE) DEPARTURE PROCEDURES

ORIG-A 08NOV18 (18312) (FAA)

TAKEOFF OBSTACLE NOTES:

- Rwy 18**, trees beginning 1705' from DER, 1' right of centerline, up to 71' AGL/521' MSL.
- Trees beginning 429' from DER, 298' left of centerline, up to 34' AGL/484' MSL.
- Power poles 430' from DER, 298' left of centerline, 33' AGL/484' MSL.
- Rwy 36**, trees beginning 2016' from DER, 301' right of centerline, up to 59' AGL/511' MSL.

PICKENS, SC

PICKENS COUNTY (LQK)

TAKEOFF MINIMUMS AND (OBSTACLE) DEPARTURE PROCEDURES

ORIG 17DEC09 (09351) (FAA)

DEPARTURE PROCEDURE:

- Rwy 5**, climb heading 048° to 2300 then climbing right turn via heading 120° to 3400 to intercept V20-35.
- Rwy 23**, climb heading 228° to 2200 then climbing left turn via heading 120° to 3400 to intercept V20-35.

TAKEOFF OBSTACLE NOTES:

- Rwy 5**, tree 30' from DER, 299' left of centerline, 9' AGL/1022' MSL.
- Vehicles on roadway, 424' from DER, left and right of centerline, up to 15' AGL/1028' MSL.
- Trees beginning 1531' from DER, 691' left of centerline, up to 107' AGL/1038' MSL.
- Tree 3019' from DER, 450' right of centerline, 120' AGL/1095' MSL.
- Rwy 23**, tree 906' from DER, 269' left of centerline, 91' AGL/990' MSL.
- Trees beginning 1015' from DER, 466' right of centerline, up to 106' AGL/1022' MSL.

PINEHURST/SOUTHERN PINES, NC

MOORE COUNTY (SOP)

TAKEOFF MINIMUMS AND (OBSTACLE) DEPARTURE PROCEDURES

ORIG-A 18AUG16 (16231) (FAA)

DEPARTURE PROCEDURE:

- Rwy 23**, climb heading 234° to 1100 before turning left.

TAKEOFF OBSTACLE NOTES:

- Rwy 5**, terrain 448' from DER, 343' right of centerline, 443' MSL.
- Trees beginning 663' from DER, 137' right of centerline, up to 100' AGL/475' MSL.
- Terrain 141' from DER, 329' left of centerline, 435' MSL.
- Trees beginning 176' from DER, 220' left of centerline, up to 100' AGL/529' MSL.
- Rwy 23**, pipe 228' from DER, 431' right of centerline, 13' AGL/463' MSL.
- Antenna 657' from DER, 415' right of centerline, 32' AGL/482' MSL.
- Trees beginning 701' from DER, 422' right of centerline, up to 100' AGL/579' MSL.
- Trees beginning 364' from DER, 353' left of centerline, up to 100' AGL/569' MSL.

TAKEOFF MINIMUMS (OBSTACLE) DEPARTURE PROCEDURES, AND DIVERSE VECTOR AREA (RADAR VECTORS)

24025

SE-2

TAKEOFF MINIMUMS (OBSTACLE) DEPARTURE PROCEDURES, AND DIVERSE VECTOR AREA (RADAR VECTORS)

24025

PLYMOUTH, NC

PLYMOUTH MUNI (PMZ)

TAKEOFF MINIMUMS AND (OBSTACLE) DEPARTURE PROCEDURES

AMDT 2 15DEC11 (11349) (FAA)

TAKEOFF MINIMUMS:

Rwy 3, 400-2 or std. w/min. climb of 270' per NM to 500.

DEPARTURE PROCEDURE:

Rwy 3, climb heading 027° to 500 before turning left.

TAKEOFF OBSTACLE NOTES:

Rwy 3, trees beginning 283' from DER, 55' left of centerline, up to 100' AGL/130' MSL.

Trees beginning 109' from DER, 8' right of centerline, up to 100' AGL/130' MSL.

Antenna 1.5 NM from DER, 3068' left of centerline, 347' AGL/366' MSL.

Rwy 21, trees beginning 119' from DER, 8' left of centerline, up to 100' AGL/134' MSL.

Trees beginning 123' from DER, 39' right of centerline, up to 100' AGL/134' MSL.

POPE AAF (KPOB)

FORT LIBERTY, NC

TAKEOFF MINIMUMS AND (OBSTACLE) DEPARTURE PROCEDURES

AMDT 10 24MAR22 (23278) (USAF)

DEPARTURE PROCEDURE:

Rwy 5, expect RADAR vectors from Fayetteville approach.

Rwy 23, expect RADAR vectors from Fayetteville approach. Std w/min climb of 232'/NM to 1000 or 300-1% w/min climb of 220'/NM to 1000.

Fence 1201' from DER, 71' left of centerline, 247' MSL.

TAKEOFF OBSTACLE NOTES:

Rwy 5, multiple trees 1682' to 2515' from DER, 703' right of centerline, 108' AGL/281' MSL.

Multiple trees 2578' to 2988' from DER, 996' right of centerline, 107' AGL/280' MSL.

Multiple trees 3026' to 3376' from DER, 921' right of centerline, 118' AGL/290' MSL.

Multiple trees 1473' to 1554' from DER, 776' left of centerline, 45' AGL/231' MSL.

Multiple trees 2187' to 3435' from DER, 418' left of centerline, 107' AGL/279' MSL.

Industrial plant 3878' from DER, 1124' left of centerline, 100' AGL/283' MSL.

Rwy 23, fence 1201' from DER, 71' left of centerline, 247' MSL.

Terrain 1896' from DER, 864' right of centerline, 282' MSL.

Multiple trees 2733' to 2971' from DER, 692' right of centerline, 59' AGL/303' MSL.

Multiple trees 3005' to 3499' from DER, 641' right of centerline, 95' AGL/343' MSL.

Multiple trees 3504' to 3991' from DER, 340' right of centerline, 93' AGL/339' MSL.

Multiple trees 4003' to 4488' from DER, 453' right of centerline, 66' AGL/329' MSL.

Multiple ballpark lights 5098' from DER, 466' right of centerline, 75' AGL/348' MSL.

Forestry twr 2.2 NM from DER, 3399' right of centerline, 140' AGL/559' MSL.

Multiple trees 1278' to 1761' from DER, 266' left of centerline, 64' AGL/292' MSL.

Multiple trees 2542' to 3644' from DER, 128' left of centerline, 65' AGL/322' MSL.

Multiple trees 3504' to 3887' from DER, 729' left of centerline, 65' AGL/322' MSL.

Multiple trees 4013' to 4908' from DER, 6' left of centerline, 68' AGL/344' MSL.

Multiple trees 5132' to 5713' from DER, 187' left of centerline, 78' AGL/368' MSL.

Pylon and trees 1.3 NM from DER, 1285' left of centerline, 120' AGL/473' MSL.

Twr 5900' from DER, 1750' right of centerline, 54' AGL/374' MSL.

Twr 3 NM from DER, 1.4 NM right of centerline, 220' AGL/746' MSL.

RAEFORD, NC

P K AIRPARK (5W4)

TAKEOFF MINIMUMS AND (OBSTACLE) DEPARTURE PROCEDURES

AMDT 1 18NOV10 (10322) (FAA)

TAKEOFF OBSTACLE NOTES:

Rwy 4, rising terrain 48' from DER, left and right of centerline, up to 332' MSL.

Trees beginning 83' from DER, left and right of centerline, up to 100' AGL/429' MSL.

Vehicles on road beginning 329' from DER, 189' right of centerline, up to 15' AGL/324' MSL.

Rwy 22, terrain 42' from DER, left and right of centerline, up to 306' MSL.

Trees beginning 268' from DER, left and right of centerline, up to 100' AGL/389' MSL.

Vehicles on road beginning 1' from DER, left and right of centerline, up to 15' AGL/314' MSL.

22 FEB 2024 to 21 MAR 2024

22 FEB 2024 to 21 MAR 2024

TAKEOFF MINIMUMS (OBSTACLE) DEPARTURE PROCEDURES, AND DIVERSE VECTOR AREA (RADAR VECTORS)

24025

SE-2

TAKEOFF MINIMUMS (OBSTACLE) DEPARTURE PROCEDURES, AND DIVERSE VECTOR AREA (RADAR VECTORS)

24025

RALEIGH/DURHAM, NC

RALEIGH-DURHAM INTL (RDU)

TAKEOFF MINIMUMS AND (OBSTACLE) DEPARTURE PROCEDURES

AMDT 6B 06OCT22 (22279) (FAA)

TAKEOFF MINIMUMS:

Rwy 14, 300-1 or std. w/min. climb of 305' per NM to 700.

Rwy 32, 300-1.

DEPARTURE PROCEDURE:

Rwy 14, climb heading 144° to 1400 before turning right.

Rwy 23L, climb heading 234° to 1900 before turning left.

Rwy 23R, climb heading 234° to 1800 before turning left.

TAKEOFF OBSTACLE NOTES:

Rwy 5L, lighting 10' from DER, 4' left of centerline, 2' AGL/410' MSL.

Tree 1903' from DER, 986' right of centerline, 467' MSL.

Tree 1926' from DER, 1003' left of centerline, 483' MSL.

Trees beginning 2010' from DER, 912' right of centerline, up to 476' MSL.

Tree 2126' from DER, 1051' left of centerline, 489' MSL.

Trees beginning 3507' from DER, 1269' left of centerline, up to 519' MSL.

Tree 3652' from DER, 1327' left of centerline, 524' MSL.

Trees beginning 3662' from DER, 1372' left of centerline, up to 536' MSL.

Water tower, tank beginning 4044' from DER, 1577' right of centerline, up to 144' AGL/547' MSL.

Tree 5171' from DER, 1748' left of centerline, 541' MSL.

Rwy 5R, lighting beginning 1' from DER, 5' left of centerline, up to 1' AGL/432' MSL.

Lighting beginning 1' from DER, 4' right of centerline, up to 1' AGL/432' MSL.

Tree 1215' from DER, 791' right of centerline, 466' MSL.

Tree 1350' from DER, 760' right of centerline, 471' MSL.

Trees beginning 1480' from DER, 846' right of centerline, up to 481' MSL.

Rwy 14, lighting 10' from DER, 29' right of centerline, 2' AGL/427' MSL.

Lighting 10' from DER, 29' left of centerline, 2' AGL/427' MSL.

Trees beginning 1160' from DER, 758' right of centerline, up to 499' MSL.

Trees beginning 1397' from DER, 856' left of centerline, up to 539' MSL.

Tree 1489' from DER, 772' right of centerline, 510' MSL.

Trees beginning 1602' from DER, 871' right of centerline, up to 528' MSL.

Tree 2033' from DER, 1044' left of centerline, 544' MSL.

Tree 2130' from DER, 968' right of centerline, 540' MSL.

Trees beginning 2271' from DER, 881' left of centerline, up to 546' MSL.

Tree 2328' from DER, 1013' right of centerline, 555' MSL.

Tree 2485' from DER, 876' right of centerline, 556' MSL.

Tree 2560' from DER, 1101' right of centerline, 563' MSL.

Tree 2751' from DER, 1132' right of centerline, 570' MSL.

Tree 3693' from DER, 391' right of centerline, 572' MSL.

Trees beginning 3913' from DER, 154' left of centerline, up to 568' MSL.

Tree 4055' from DER, 657' right of centerline, 578' MSL.

Rwy 23L, lighting 1' from DER, 5' left of centerline, 1' AGL/399' MSL.

Lighting 2' from DER, 5' right of centerline, 1' AGL/399' MSL.

Vegetation 18' from DER, 259' left of centerline, 400' MSL.

Tree 1029' from DER, 757' left of centerline, 431' MSL.

Tree 1361' from DER, 793' left of centerline, 433' MSL.

Tree 1372' from DER, 862' left of centerline, 439' MSL.

Pole 1457' from DER, 878' right of centerline, 105' AGL/452' MSL.

Trees beginning 1469' from DER, 817' left of centerline, up to 451' MSL.

Rwy 23R, lighting 10' from DER, 5' right of centerline, 1' AGL/368' MSL.

Rwy 32, lighting 9' from DER, 29' left of centerline, 2' AGL/433' MSL.

Lighting 9' from DER, 29' right of centerline, 2' AGL/433' MSL.

Pole 1170' from DER, 618' left of centerline, 55' AGL/485' MSL.

Poles beginning 1186' from DER, 626' left of centerline, up to 54' AGL/486' MSL.

Building 1242' from DER, 753' right of centerline, 38' AGL/473' MSL.

Control tower 2228' from DER, 898' right of centerline, 231' AGL/659' MSL.

DIVERSE VECTOR AREA (RADAR VECTORS)

AMDT 1 22JUN17 (17173) (FAA)

Rwy 14, heading as assigned by ATC; requires minimum climb of 310' per NM to 1000.

Rwy 23L, heading as assigned by ATC; requires minimum climb of 250' per NM to 2300.

Rwy 23R, heading as assigned by ATC; requires minimum climb of 240' per NM to 2100.

22 FEB 2024 to 21 MAR 2024

22 FEB 2024 to 21 MAR 2024

TAKEOFF MINIMUMS (OBSTACLE) DEPARTURE PROCEDURES, AND DIVERSE VECTOR AREA (RADAR VECTORS)

24025

SE-2

TAKEOFF MINIMUMS (OBSTACLE) DEPARTURE PROCEDURES, AND DIVERSE VECTOR AREA (RADAR VECTORS)

24025

REIDSVILLE, NC

ROCKINGHAM COUNTY NC SHILOH (SIF)

TAKEOFF MINIMUMS AND (OBSTACLE) DEPARTURE PROCEDURES

AMDT 3 27JAN22 (22027) (FAA)

TAKEOFF MINIMUMS:

Rwy 31, 400-2¼ or std. w/min. climb of 558' per NM to 1000.

DEPARTURE PROCEDURE:

Rwy 31, climb on heading 312° to 1200 before proceeding on course.

TAKEOFF OBSTACLE NOTES:

Rwy 13, trees beginning 27' from DER, 284' left of centerline, up to 51' AGL/703' MSL.
Fence beginning 43' from DER, 490' right of centerline, up to 6' AGL/671' MSL.
Fence 180' from DER, 476' right of centerline, 8' AGL/674' MSL.
Trees beginning 194' from DER, 277' left of centerline, up to 43' AGL/704' MSL.
Trees beginning 295' from DER, 292' left of centerline, up to 60' AGL/727' MSL.
Tree, vehicles on road beginning 311' from DER, 484' right of centerline, up to 71' AGL/738' MSL.
Trees beginning 438' from DER, 1' left of centerline, up to 65' AGL/734' MSL.
Tree, vehicles on road beginning 530' from DER, 460' right of centerline, up to 81' AGL/750' MSL.
Tree, pole, building beginning 660' from DER, 7' right of centerline, up to 93' AGL/758' MSL.
Trees beginning 1465' from DER, 29' right of centerline, up to 93' AGL/759' MSL.
Trees beginning 1542' from DER, 2' right of centerline, up to 101' AGL/762' MSL.
Trees beginning 1768' from DER, 122' left of centerline, up to 79' AGL/741' MSL.
Tree 1913' from DER, 519' left of centerline, 76' AGL/744' MSL.
Trees beginning 1960' from DER, 76' left of centerline, up to 79' AGL/745' MSL.
Trees beginning 1981' from DER, 21' left of centerline, up to 105' AGL/771' MSL.
Rwy 31, tree 37' from DER, 454' right of centerline, 33' AGL/714' MSL.
Terrain 64' from DER, 282' left of centerline, 697' MSL.
Vehicles on road 84' from DER, 139' left of centerline, 711' MSL.
Pole, vehicles on road beginning 117' from DER, 266' left of centerline, up to 729' MSL.
Trees beginning 165' from DER, 346' right of centerline, up to 24' AGL/729' MSL.
Tree, fence, vehicles on road, terrain, building beginning 191' from DER, 21' left of centerline, up to 93' AGL/788' MSL.
Trees beginning 324' from DER, 370' right of centerline, up to 52' AGL/736' MSL.
Trees beginning 499' from DER, 217' right of centerline, up to 48' AGL/738' MSL.
Trees beginning 625' from DER, 15' right of centerline, up to 66' AGL/759' MSL.
Trees beginning 891' from DER, 84' right of centerline, up to 68' AGL/760' MSL.
Tree, vehicles on road beginning 1000' from DER, 8' right of centerline, up to 88' AGL/781' MSL.
Trees beginning 1151' from DER, 68' left of centerline, up to 108' AGL/791' MSL.
Tree, vehicles on road, pole, building beginning 1166' from DER, 1' right of centerline, up to 97' AGL/799' MSL.
Tree, pole beginning 1244' from DER, 25' left of centerline, up to 122' AGL/799' MSL.
Tree, building beginning 1834' from DER, 176' right of centerline, up to 80' AGL/803' MSL.
Tree, building, pole, antenna beginning 1920' from DER, 124' right of centerline, up to 89' AGL/815' MSL.
Tree, building, pole, antenna, terrain beginning 2013' from DER, 18' right of centerline, up to 103' AGL/835' MSL.
Trees beginning 2017' from DER, 16' left of centerline, up to 91' AGL/806' MSL.
Trees beginning 2113' from DER, 62' left of centerline, up to 90' AGL/809' MSL.
Tree, terrain beginning 2216' from DER, 10' right of centerline, up to 101' AGL/848' MSL.
Tree, terrain, vegetation beginning 2233' from DER, 2' left of centerline, up to 101' AGL/831' MSL.
trees beginning 2404' from DER, 4' right of centerline, up to 113' AGL/851' MSL.
Tree, terrain, pole, vegetation, vehicles on road, sign, building beginning 2447' from DER, 0' right of centerline, up to 105' AGL/863' MSL.
Tree, pole beginning 2620' from DER, 6' left of centerline, up to 99' AGL/835' MSL.
Tree, pole, vehicles on road, building beginning 2687' from DER, 1' left of centerline, up to 102' AGL/844' MSL.
Trees beginning 4097' from DER, 84' left of centerline, up to 97' AGL/846' MSL.
Trees beginning 4120' from DER, 193' left of centerline, up to 96' AGL/848' MSL.
Trees beginning 4130' from DER, 78' left of centerline, up to 104' AGL/849' MSL.
Trees beginning 4145' from DER, 134' left of centerline, up to 111' AGL/850' MSL.
Trees beginning 4151' from DER, 1' left of centerline, up to 101' AGL/851' MSL.
Tree, pole, building beginning 4253' from DER, 0' of centerline, up to 101' AGL/878' MSL.
Trees beginning 4437' from DER, 1' left of centerline, up to 112' AGL/852' MSL.
Trees beginning 5289' from DER, 45' left of centerline, up to 123' AGL/853' MSL.
Trees beginning 5376' from DER, 66' left of centerline, up to 107' AGL/857' MSL.
Trees beginning 5419' from DER, 32' left of centerline, up to 99' AGL/865' MSL.
Trees beginning 5548' from DER, 5' left of centerline, up to 92' AGL/877' MSL.
Trees beginning 5600' from DER, 0' left of centerline, up to 79' AGL/879' MSL.
Trees beginning 5626' from DER, 34' left of centerline, up to 85' AGL/888' MSL.
Trees beginning 5641' from DER, 5' left of centerline, up to 87' AGL/894' MSL.
Trees beginning 5654' from DER, 22' left of centerline, up to 91' AGL/900' MSL.
Trees beginning 5737' from DER, 29' left of centerline, up to 84' AGL/906' MSL.
Trees beginning 5826' from DER, 32' left of centerline, up to 89' AGL/910' MSL.
Trees beginning 5865' from DER, 155' left of centerline, up to 110' AGL/928' MSL.
Trees beginning 5966' from DER, 288' left of centerline, up to 90' AGL/941' MSL.
Tree 6066' from DER, 1939' left of centerline, 88' AGL/944' MSL.
Trees beginning 6068' from DER, 373' left of centerline, up to 88' AGL/950' MSL.
Trees beginning 1 NM from DER, 1095' left of centerline, up to 91' AGL/965' MSL.
Trees beginning 1 NM from DER, 11' left of centerline, up to 91' AGL/968' MSL.
Tree 1.1 NM from DER, 451' right of centerline, 98' AGL/879' MSL.
CON'T

22 FEB 2024 to 21 MAR 2024

22 FEB 2024 to 21 MAR 2024

TAKEOFF MINIMUMS (OBSTACLE) DEPARTURE PROCEDURES, AND DIVERSE VECTOR AREA (RADAR VECTORS)

24025

SE-2

TAKEOFF MINIMUMS (OBSTACLE) DEPARTURE PROCEDURES, AND DIVERSE VECTOR AREA (RADAR VECTORS)

24025

REIDSVILLE, NC (CON'T)

ROCKINGHAM COUNTY NC SHILOH (SIF) (CON'T)

Rwy 31 (CON'T), trees beginning 1.1 NM from DER, 62' right of centerline, up to 106' AGL/889' MSL.

Trees beginning 1.1 NM from DER, 367' right of centerline, up to 100' AGL/892' MSL.

Trees beginning 1.1 NM from DER, 16' right of centerline, up to 97' AGL/895' MSL.

Trees beginning 1.1 NM from DER, 117' right of centerline, up to 101' AGL/903' MSL.

Trees beginning 1.1 NM from DER, 41' right of centerline, up to 106' AGL/914' MSL.

Tree 1.1 NM from DER, 3' right of centerline, 100' AGL/921' MSL.

Trees beginning 1.1 NM from DER, 60' right of centerline, up to 99' AGL/923' MSL.

Trees beginning 1.2 NM from DER, 85' right of centerline, up to 94' AGL/940' MSL.

Trees beginning 1.2 NM from DER, 4' right of centerline, up to 95' AGL/947' MSL.

Tree, pole, building, vehicles on road beginning 1.2 NM from DER, 112' left of centerline, up to 100' AGL/969' MSL.

Trees beginning 1.2 NM from DER, 28' right of centerline, up to 80' AGL/952' MSL.

Trees beginning 1.2 NM from DER, 6' right of centerline, up to 77' AGL/953' MSL.

Trees beginning 1.2 NM from DER, 269' right of centerline, up to 87' AGL/963' MSL.

Trees beginning 1.2 NM from DER, 28' right of centerline, up to 93' AGL/970' MSL.

Trees beginning 1.3 NM from DER, 100' right of centerline, up to 97' AGL/973' MSL.

Trees beginning 1.3 NM from DER, 1' left of centerline, up to 91' AGL/970' MSL.

Tree, pole beginning 1.3 NM from DER, 12' left of centerline, up to 95' AGL/973' MSL.

Tree, pole beginning 1.3 NM from DER, 7' right of centerline, up to 118' AGL/975' MSL.

Tree, pole beginning 1.4 NM from DER, 10' right of centerline, up to 94' AGL/1004' MSL.

Tree, pole, tank beginning 1.6 NM from DER, 10' right of centerline, up to 101' AGL/1013' MSL.

Tree 1.8 NM from DER, 2909' right of centerline, 102' AGL/977' MSL.

ROANOKE RAPIDS, NC

HALIFAX/NORTHAMPTON RGNL (IXA)

TAKEOFF MINIMUMS AND (OBSTACLE) DEPARTURE PROCEDURES

AMDT 1 17AUG17 (22027) (FAA)

TAKEOFF OBSTACLE NOTES:

Rwy 20, tree 100' from DER, 492' left of centerline, 178' MSL.

Tree 1363' from DER, 183' right of centerline, 182' MSL.

Trees beginning 1420' from DER, 27' right of centerline, up to 187' MSL.

Tree 1515' from DER, 29' left of centerline, 179' MSL.

Tree 1696' from DER, 56' left of centerline, 191' MSL.

Tree 1724' from DER, 127' left of centerline, 195' MSL.

Trees beginning 1780' from DER, 70' left of centerline, up to 199' MSL.

Trees beginning 2026' from DER, 151' left of centerline, up to 200' MSL.

Tree 2276' from DER, 77' right of centerline, 199' MSL.

Rwy 2, NAVAJD 39' from DER, 125' right of centerline, 20' AGL/140' MSL.

NAVAJD 40' from DER, 124' left of centerline, 18' AGL/141' MSL.

Tree 1298' from DER, 722' right of centerline, 183' MSL.

ROCK HILL, SC

ROCK HILL/YORK COUNTY/BRYANT FLD (UZA)

TAKEOFF MINIMUMS AND (OBSTACLE) DEPARTURE PROCEDURES

AMDT 2 20AUG15 (22139) (FAA)

TAKEOFF OBSTACLE NOTES:

Rwy 2, trees beginning 99' from DER, 491' right of centerline, up to 89' AGL/750' MSL.

Trees beginning 1857' from DER, 77' right of centerline, up to 101' AGL/730' MSL.

Trees beginning 2096' from DER, 3' left of centerline, up to 84' AGL/723' MSL.

Rwy 20, vegetation 153' from DER, 470' right of centerline, up to 8' AGL/673' MSL.

Trees 3231' from DER, 40' left of centerline, up to 83' AGL/749' MSL.

ROCKINGHAM, NC

RICHMOND COUNTY (RCZ)

TAKEOFF MINIMUMS AND (OBSTACLE) DEPARTURE PROCEDURES

AMDT 2 30JUN10 (10154) (FAA)

TAKEOFF MINIMUMS:

Rwys 4, 22, NA-Environmental.

TAKEOFF OBSTACLE NOTES:

Rwy 14, multiple trees beginning 676' from DER, 20' right of centerline, up to 100' AGL/441' MSL.

Multiple trees beginning 5' from DER, 75' left of centerline, up to 100' AGL/458' MSL.

Train beginning 6' from DER, 355' left of centerline, 23' AGL/382' MSL.

Rwy 32, tree 1152' from DER, 443' left of centerline, 100' AGL/399' MSL.

Tree 181' from DER, 428' right of centerline, 100' AGL/429' MSL.

Vehicles on roadway 34' from DER, 498' right of centerline, up to 15' AGL/364' MSL.

TAKEOFF MINIMUMS (OBSTACLE) DEPARTURE PROCEDURES, AND DIVERSE VECTOR AREA (RADAR VECTORS)

24025

SE-2

22 FEB 2024 to 21 MAR 2024

22 FEB 2024 to 21 MAR 2024

TAKEOFF MINIMUMS (OBSTACLE) DEPARTURE PROCEDURES, AND DIVERSE VECTOR AREA (RADAR VECTORS)

24025

ROCKY MOUNT, NC

ROCKY MOUNT/WILSON RGNL (RWI)

TAKEOFF MINIMUMS AND (OBSTACLE) DEPARTURE PROCEDURES

AMDT 2 05APR12 (21336) (FAA)

DEPARTURE PROCEDURE:

Rwy 22, climb heading 222° to 1200 before turning right.

TAKEOFF OBSTACLE NOTES:

Rwy 4, trees 1457' from DER, 792' left of centerline, up to 58' AGL/207' MSL.

Trees 2452' from DER, 751' right of centerline, up to 72' AGL/231' MSL.

Rwy 22, trees beginning 1215' from DER, 428' left of centerline, up to 66' AGL/224' MSL.

Trees 2452' from DER, 665' right of centerline, up to 45' AGL/204' MSL.

ROXBORO, NC

RALEIGH RGNL AT PERSON COUNTY (TDF)

TAKEOFF MINIMUMS AND (OBSTACLE) DEPARTURE PROCEDURES

AMDT 1 10AUG23 (23222) (FAA)

TAKEOFF OBSTACLE NOTES:

Rwy 6, light poles 9' from DER, 30' left of centerline, 2' AGL/606' MSL.

Tree 1474' from DER, 815' right of centerline, 645' MSL.

Tree 1606' from DER, 654' left of centerline, 652' MSL.

Trees beginning 1621' from DER, 215' right of centerline, up to 657' MSL.

Trees beginning 1623' from DER, 124' left of centerline, up to 654' MSL.

Trees beginning 2230' from DER, 114' left of centerline, up to 676' MSL.

Tree 2762' from DER, 313' right of centerline, 113' AGL/682' MSL.

Trees beginning 2816' from DER, 235' left of centerline, up to 105' AGL/681' MSL.

Tree 3270' from DER, 1110' right of centerline, 687' MSL.

Rwy 24, trees beginning 436' from DER, 580' right of centerline, up to 642' MSL.

Tree 1003' from DER, 733' right of centerline, 646' MSL.

Tree 1081' from DER, 645' right of centerline, 649' MSL.

Trees beginning 1182' from DER, 643' right of centerline, up to 655' MSL.

Trees beginning 1496' from DER, 886' left of centerline, up to 655' MSL.

Tree 2481' from DER, 1156' right of centerline, 657' MSL.

Trees beginning 2565' from DER, 969' left of centerline, up to 662' MSL.

Tree 2593' from DER, 1142' right of centerline, 673' MSL.

Trees beginning 2600' from DER, 894' right of centerline, up to 676' MSL.

Trees beginning 2702' from DER, 943' right of centerline, up to 677' MSL.

RUTHERFORDTON, NC

RUTHERFORD COUNTY/MARCHMAN FLD (FQD)

TAKEOFF MINIMUMS AND (OBSTACLE) DEPARTURE PROCEDURES

AMDT 4 28FEB19 (22195) (FAA)

TAKEOFF MINIMUMS:

Rwy 1, std. w/min. climb of 290' per NM to 2900 or 2900-3 for climb in visual conditions.

DEPARTURE PROCEDURE:

Rwy 1, climbing right turn heading 180° to 4000 before proceeding on course.

Rwy 19, climb heading 189° to 3600 before proceeding on course.

VCOA:

Obtain ATC approval for climb in visual conditions when requesting IFR clearance. Climb in visual conditions to cross Rutherford County/Marchman Fld at or above 3800 before proceeding on course.

TAKEOFF OBSTACLE NOTES:

Rwy 1, tree, NAVAID beginning 6' from DER, 250' left of centerline, up to 1139' MSL.

Tree 315' from DER, 478' right of centerline, 1151' MSL.

Tree 1985' from DER, 988' right of centerline, 1166' MSL.

Rwy 19, tree 28' from DER, 329' left of centerline, 1080' MSL.

Tree 489' from DER, 455' right of centerline, 26' AGL/1088' MSL.

ST. GEORGE, SC

ST. GEORGE (6J2)

TAKEOFF MINIMUMS AND (OBSTACLE) DEPARTURE PROCEDURES

ORIG 10APR08 (08101) (FAA)

TAKEOFF OBSTACLE NOTES:

Rwy 5, tree 3021' from DER, 186' left of centerline, 100' AGL/175' MSL.

Rwy 23, tree 1401' from DER, 259' right of centerline, 100' AGL/178' MSL.

22 FEB 2024 to 21 MAR 2024

22 FEB 2024 to 21 MAR 2024

TAKEOFF MINIMUMS (OBSTACLE) DEPARTURE PROCEDURES, AND DIVERSE VECTOR AREA (RADAR VECTORS)

24025

SE-2

TAKEOFF MINIMUMS (OBSTACLE) DEPARTURE PROCEDURES, AND DIVERSE VECTOR AREA (RADAR VECTORS)

24025

SALISBURY, NC

MID-CAROLINA RGNL (RUQ)

TAKEOFF MINIMUMS AND (OBSTACLE) DEPARTURE PROCEDURES

AMDT 2A 17AUG17 (17229) (FAA)

TAKEOFF MINIMUMS:

Rwy 20, 400-234 or std. w/min. climb of 205' per NM to 1300, or alternatively, with standard takeoff minimums and a normal 200' per NM climb gradient, takeoff must occur no later than 1200' prior to DER.

DEPARTURE PROCEDURE:

Rwy 20, climb heading 202° to 1700 before turning right.

TAKEOFF OBSTACLE NOTES:

Rwy 2, trees beginning 106' from DER, 474' right of centerline, up to 68' AGL/787' MSL.

Rwy 20, trees beginning 167' from DER, 483' right of centerline, up to 31' AGL/810' MSL.
Building and trees beginning 668' from DER, 275' left of centerline, up to 40' AGL/809' MSL.

Trees beginning 890' from DER, 59' right of centerline, up to 43' AGL/822' MSL.

Trees beginning 1055' from DER, 476' right of centerline, up to 112' AGL/871' MSL.

Trees beginning 2251' from DER, 3' left of centerline, up to 97' AGL/896' MSL.

Trees beginning 2410' from DER, 17' right of centerline, up to 114' AGL/913' MSL.

Tower 2.3 NM from DER, 2196' right of centerline, 306' AGL/1121' MSL.

SALUDA, SC

SALUDA COUNTY (6J4)

TAKEOFF MINIMUMS AND (OBSTACLE) DEPARTURE PROCEDURES

ORIG 17DEC09 (09351) (FAA)

TAKEOFF MINIMUMS:

Rwy 19, 300-2 or std. w/ min. climb of 207' per NM to 900, or alternatively, with standard takeoff minimums and a normal 200'/NM climb gradient, takeoff must occur no later than 1400' prior to DER.

TAKEOFF OBSTACLE NOTES:

Rwy 1, numerous trees beginning abeam DER, 40' left of centerline, up to 66' AGL/635' MSL.

Numerous trees beginning abeam DER, 35' right of centerline, up to 100' AGL/649' MSL.

Rwy 19, numerous trees beginning abeam DER, 20' left of centerline, up to 43' AGL/552' MSL.

Numerous trees beginning abeam DER, 30' right of centerline, up to 100' AGL/639' MSL.

SANFORD, NC

RALEIGH EXEC JETPORT AT SANFORD-LEE COUNTY (TTA)

TAKEOFF MINIMUMS AND (OBSTACLE) DEPARTURE PROCEDURES

AMDT 1 25AUG11 (22195) (FAA)

DEPARTURE PROCEDURE:

Rwy 3, climb heading 029° to 1100 before turning right.

Rwy 21, climb heading 209° to 1500 before turning left.

TAKEOFF OBSTACLE NOTES:

Rwy 3, trees beginning 3313' from DER, 380' right of centerline, up to 89' AGL/318' MSL.

Rwy 21, trees beginning 89' from DER, 435' right of centerline, up to 29' AGL/259' MSL.

SEYMOUR JOHNSON AFB (KGSB)

GOLDSBORO, NC

TAKEOFF MINIMUMS AND (OBSTACLE) DEPARTURE PROCEDURES

AMDT 3 03NOV22 (22307) (USAF)

TAKEOFF OBSTACLE NOTES:

Rwy 8, trees 3015' from DER, 950' left of centerline, 80' AGL/194' MSL.

SHAW AFB (KSSC)

SUMTER, SC

TAKEOFF MINIMUMS AND (OBSTACLE) DEPARTURE PROCEDURES

ORIG 16OCT14 (14289)

TAKEOFF OBSTACLE NOTES:

Rwy 4R, terrain 500' left of centerline, at the threshold, 236' MSL.

Surveyed terrain 500' left of centerline, 234' MSL.

Rwy 22L, radio tower 5137' from DER, 1701' left of centerline, 140' AGL/369' MSL.

Glideslope antenna 563' from DER, 500' right of centerline, 40' AGL/273' MSL.

Terrain 0' inward of DER, 500' right of centerline, 236' MSL.

Rwy 22R, terrain beginning at 255' from DER, 500' right of centerline to 568' right of centerline, up to 246' MSL.

Trees 4651' from DER, 832' right of centerline, 65' AGL/337' MSL.

SHELBY, NC

SHELBY-CLEVELAND COUNTY RGNL (EHO)

TAKEOFF MINIMUMS AND (OBSTACLE) DEPARTURE PROCEDURES

ORIG 15JAN09 (09015) (FAA)

TAKEOFF OBSTACLE NOTES:

Rwy 5, trees beginning 74' from DER, 394' left of centerline, up to 99' AGL/899' MSL.

Trees beginning 2018' from DER, 804' right of centerline, up to 100' AGL/919' MSL.

Rwy 23, trees beginning 186' from DER, 148' left of centerline, up to 93' AGL/903' MSL.

TAKEOFF MINIMUMS (OBSTACLE) DEPARTURE PROCEDURES, AND DIVERSE VECTOR AREA (RADAR VECTORS)

24025

SE-2

TAKEOFF MINIMUMS (OBSTACLE) DEPARTURE PROCEDURES, AND DIVERSE VECTOR AREA (RADAR VECTORS)

24025

SILER CITY, NC

SILER CITY MUNI (SCR)

TAKEOFF MINIMUMS AND (OBSTACLE) DEPARTURE PROCEDURES

AMDT 2 08JAN15 (15008) (FAA)

TAKEOFF MINIMUMS:

Rwy 4, 300-1% or std. w/min. climb of 236' per NM to 1000 or alternatively, with standard takeoff minimums and a normal 200' per NM climb gradient, takeoff must occur no later than 2000' prior to DER.

TAKEOFF OBSTACLE NOTES:

Rwy 4, trees beginning 25' from DER, 25' right of centerline, up to 96' AGL/855' MSL.

Poles beginning 158' from DER, 364' left of centerline, up to 34' AGL/643' MSL.

Trees beginning 275' from DER, 3' left of centerline, up to 96' AGL/825' MSL.

Rwy 22, trees beginning 8' from DER, 3' left of centerline, up to 77' AGL/736' MSL.

Vehicles on road beginning 86' from DER, 330' right of centerline, up to 15' AGL/612' MSL.

Trees beginning 154' from DER, 5' right of centerline, up to 100' AGL/749' MSL.

Bldg 374' from DER, 466' right of centerline, 20' AGL/619' MSL.

Pole 490' from DER, 357' right of centerline, 26' AGL/625' MSL.

Pole 580' from DER, 481' right of centerline, 18' AGL/617' MSL.

Bldg 591' from DER, 427' right of centerline, 16' AGL/615' MSL.

Pole 769' from DER, 314' right of centerline, 19' AGL/618' MSL.

Pole 1188' from DER, 253' right of centerline, 23' AGL/632' MSL.

SIMMONS AAF (KFBG)

FORT LIBERTY, NC

TAKEOFF MINIMUMS AND (OBSTACLE) DEPARTURE PROCEDURES

AMDT 3 15JUN23 (23222) (USA)

TAKOFF MINIMUMS:

Rwy 9, std w/min climb of 230'/NM to 1400.

Rwy 27, 400-2% or std w/min climb of 230'/NM to 700.

DEPARTURE PROCEDURE:

Rwy 27, climb hdg 273° to 800 before proceeding on course.

TAKEOFF OBSTACLE NOTES:

Rwy 9, tree 1059' from DER, 407' left of centerline, 268' MSL.

Tree 1436' from DER, 601' left of centerline, 295' MSL.

Tree 1842' from DER, 68' right of centerline, 288' MSL.

Tree 2073' from DER, 473' right of centerline, 300' MSL.

Tree 2134' from DER, 676' right of centerline, 300' MSL.

Rwy 27, twr 1.9 NM from DER, 3589' right of centerline, 313' AGL/584' MSL.

Tree 923' from DER, 208' left of centerline, 329' MSL.

Fence 229' from DER, 9' left of centerline, 251' MSL.

Fence 78' from DER, 3259' left of centerline, 247' MSL.

Military road 33' from DER, 359' left of centerline, 252' MSL.

Public road 545' from DER, 408' left of centerline, 259' MSL.

Railroad 372' from DER, 9' left of centerline, 270' MSL.

SMITHFIELD, NC

JOHNSTON RGNL (JNX)

TAKEOFF MINIMUMS AND (OBSTACLE) DEPARTURE PROCEDURES

AMDT 4 30APR15 (15120) (FAA)

TAKEOFF MINIMUMS:

Rwy 3, 300-1% or std. w/ min climb of 265' per NM to 500.

Rwy 21, 500-2% or std. w/ min climb of 265' per NM to 800.

DEPARTURE PROCEDURE:

Rwy 3, climb heading 032° to 1500 before turning left.

Rwy 21, climb heading 212° to 1000 before turning right.

TAKEOFF OBSTACLE NOTES:

Rwy 3, trees beginning 35' from DER, 380' right of centerline, up to 96' AGL/276' MSL.

Terrain 99' from DER, 364' right of centerline, 171' MSL.

Poles beginning 1236' from DER, 30' left and right of centerline, up to 44' AGL/234' MSL.

Trees beginning 2317' from DER, 103' left of centerline, up to 100' AGL/349' MSL.

Building 2610' from DER, 244' left of centerline, 36' AGL/231' MSL.

Tank 2732' from DER, 6' left of centerline, 45' AGL/238' MSL.

Tree 1 NM from DER, 251' right of centerline, 131' AGL/301' MSL.

Rwy 21, trees beginning 1' from DER, 338' right of centerline, up to 100' AGL/269' MSL.

Trees beginning 21' from DER, 366' left of centerline, up to 62' AGL/232' MSL.

Terrain 1374' from DER, 589' left of centerline, 187' MSL.

Pole 1409' from DER, 816' left of centerline, 27' AGL/210' MSL.

Tower 2.6 NM from DER, 2887' right of centerline, 378' AGL/613' MSL.

22 FEB 2024 to 21 MAR 2024

22 FEB 2024 to 21 MAR 2024

TAKEOFF MINIMUMS (OBSTACLE) DEPARTURE PROCEDURES, AND DIVERSE VECTOR AREA (RADAR VECTORS)

24025

SE-2


TAKEOFF MINIMUMS (OBSTACLE) DEPARTURE PROCEDURES, AND


DIVERSE VECTOR AREA (RADAR VECTORS)

24025

SPARTANBURG, SC

SPARTANBURG DOWNTOWN MEML/SIMPSON FLD (SPA)
 TAKEOFF MINIMUMS AND (OBSTACLE) DEPARTURE PROCEDURES
 AMDT 2 28FEB19 (21168) (FAA)

TAKEOFF OBSTACLE NOTES:

Rwy 5, trees beginning 622' from DER, 608' left of centerline, up to 830' MSL.

Tree 2352' from DER, 996' left of centerline, 856' MSL.

Rwy 23, trees beginning 122' from DER, 444' left of centerline, up to 825' MSL.

Tree 3391' from DER, 1033' right of centerline, 897' MSL.

Tree 3478' from DER, 208' left of centerline, 884' MSL.

Trees beginning 3504' from DER, 360' right of centerline, up to 901' MSL.

STAR, NC

MONTGOMERY COUNTY (43A)
 TAKEOFF MINIMUMS AND (OBSTACLE) DEPARTURE PROCEDURES
 ORIG 18SEP14 (14261) (FAA)

TAKEOFF MINIMUMS:

Rwy 3, 300-1¼ or std. w/min. climb of 205' per NM to 900, or alternatively, with std. takeoff minimums and a normal 200' per NM climb gradient, takeoff must occur no later than 1200' prior to DER.

Rwy 21, 300-1¼ or std. w/min. climb of 238' per NM to 800, or alternatively, with std. takeoff minimums and a normal 200' per NM climb gradient, takeoff must occur no later than 1900' prior to DER.

TAKEOFF OBSTACLE NOTES:

Rwy 3, tank 6188' from DER, 1619' left of centerline, 145' AGL/793' MSL.

Trees beginning 7' from DER, 169' left of centerline, up to 100' AGL/739' MSL.

Trees beginning 250' from DER, 334' right of centerline, up to 100' AGL/739' MSL.

Power line beginning 123' from DER, 38' right of centerline, 40' AGL/670' MSL.

Rwy 21, trees beginning 184' from DER, 407' left of centerline, up to 100' AGL/729' MSL.

Trees beginning 24' from DER, 259' right of centerline, up to 100' AGL/719' MSL.

STATESVILLE, NC

STATESVILLE RGNL (SVH)
 TAKEOFF MINIMUMS AND (OBSTACLE) DEPARTURE PROCEDURES
 AMDT 1 30NOV23 (23334) (FAA)

TAKEOFF MINIMUMS:

Rwy 28, 300-1¼ or std w/min climb of 205'/NM to 1300.

TAKEOFF OBSTACLE NOTES:

Rwy 10, tree 409' from DER, 566' left of centerline, 982' MSL.

Trees beginning 498' from DER, 114' right of centerline, up to 988' MSL.

Trees beginning 668' from DER, 315' left of centerline, up to 985' MSL.

Tree 726' from DER, 662' left of centerline, 990' MSL.

Trees beginning 829' from DER, 72' left of centerline, up to 1005' MSL.

Trees beginning 1020' from DER, 583' right of centerline, up to 91' AGL/1023' MSL.

Trees beginning 1486' from DER, 197' left of centerline, up to 110' AGL/1006' MSL.

Tree 1529' from DER, 426' left of centerline, 1015' MSL.

Trees beginning 1541' from DER, 278' left of centerline, up to 1016' MSL.

Trees beginning 1591' from DER, 634' left of centerline, up to 103' AGL/1024' MSL.

Rwy 28, vehicle on roadway 17' from DER, 330' left of centerline, 964' MSL.

Building 257' from DER, 533' right of centerline, 971' MSL.

Trees beginning 455' from DER, 535' right of centerline, up to 1025' MSL.

Trees beginning 806' from DER, 408' left of centerline, up to 1009' MSL.

Tree 1763' from DER, 888' right of centerline, 1028' MSL.

Trees beginning 1779' from DER, 556' right of centerline, up to 1030' MSL.

Trees beginning 1871' from DER, 475' right of centerline, up to 1049' MSL.

Trees beginning 2036' from DER, 752' right of centerline, up to 1057' MSL.

Transmission line 1.3 NM from DER, 707' right of centerline, 147' AGL/1172' MSL.

22 FEB 2024 to 21 MAR 2024

22 FEB 2024 to 21 MAR 2024


TAKEOFF MINIMUMS (OBSTACLE) DEPARTURE PROCEDURES, AND


DIVERSE VECTOR AREA (RADAR VECTORS)

24025

SE-2

TAKEOFF MINIMUMS (OBSTACLE) DEPARTURE PROCEDURES, AND DIVERSE VECTOR AREA (RADAR VECTORS)

24025

SUMMERVILLE, SC

SUMMERVILLE (DYB)

TAKEOFF MINIMUMS AND (OBSTACLE) DEPARTURE PROCEDURES

AMDT 2 01FEB18 (18032) (FAA)

DEPARTURE PROCEDURE:

Rwy 6, climb heading 056° to 600 before turning left.

TAKEOFF OBSTACLE NOTES:

Rwy 6, lighting 10' from DER, 15' right of centerline, 1' AGL/54' MSL.

Tree, 22' from DER, 471' left of centerline, 66' MSL.

Vehicles on perimeter road crossing centerline, 500' from DER, 15' AGL/61' MSL.

Building 283' from DER, 563' left of centerline, 77' MSL.

Tree 481' from DER, 566' right of centerline, 109' MSL.

Tree 524' from DER, 433' left of centerline, 109' MSL.

Trees, beginning 552' from DER, 444' right of centerline, up to 115' MSL.

Trees, beginning 595' from DER, 1' left of centerline, up to 127' MSL.

Trees, beginning 663' from DER, 394' right of centerline, up to 130' MSL.

Trees, beginning 1040' from DER, on centerline, up to 137' MSL.

Trees, beginning 2360' from DER, 69' right of centerline, up to 139' MSL.

Rwy 24, trees, beginning 0' from DER, 357' right of centerline, up to 92' AGL/116' MSL.

Trees, beginning 82' from DER, 21' left of centerline, up to 17' AGL/41' MSL.

Tree 922' from DER, 667' left of centerline, 87' MSL.

Trees, beginning 1018' from DER, 627' left of centerline, up to 91' MSL.

Tree 1187' from DER, 813' left of centerline, 93' MSL.

Trees, beginning 1303' from DER, 622' left of centerline, up to 95' MSL.

Trees, beginning 1452' from DER, 627' left of centerline, up to 101' MSL.

Trees, beginning 1552' from DER, 578' left of centerline, up to 104' MSL.

Trees, beginning 1979' from DER, 938' left of centerline, up to 105' MSL.

Tree 2115' from DER, 822' left of centerline, 108' MSL.

Trees, beginning 2118' from DER, 507' left of centerline, up to 111' MSL.

SUMTER, SC

SUMTER (SMS)

TAKEOFF MINIMUMS AND (OBSTACLE) DEPARTURE PROCEDURES

AMDT 1A 10AUG23 (23222) (FAA)

TAKEOFF MINIMUMS:

Rwys 14, 32, NA-VFR only.

Rwy 23, std w/min climb of 235'/NM to 800, or 1000-3 for VCOA.

VCOA:

Rwy 23, obtain ATC approval for VCOA when requesting IFR clearance. Climb in visual conditions to cross Sumter airport at or above 1000 before proceeding on course.

TAKEOFF OBSTACLE NOTES:

Rwy 23, tree 117' from DER, 210' right of centerline, 188' MSL.

Trees beginning 1745' from DER, 580' right of centerline, up to 265' MSL.

Tree 2876' from DER, 560' left of centerline, 251' MSL.

SYLVA, NC

JACKSON COUNTY (24A)

TAKEOFF MINIMUMS AND (OBSTACLE) DEPARTURE PROCEDURES

ORIG-A 03NOV22 (22307) (FAA)

TAKEOFF MINIMUMS:

Rwy 15, std. w/min. climb of 548 feet per NM to 5100 or 3300-3 for VCOA.

Rwy 33, std. w/min. climb of 355 feet per NM to 6400 or 3300-3 for VCOA.

DEPARTURE PROCEDURE:

Rwy 15, climb on heading 147° to 6100 before proceeding on course.

Rwy 33, climb on heading 327° to 6400 before proceeding on course.

VCOA:

Rwys 15, 33, obtain ATC approval for VCOA when requesting IFR clearance. Climb in visual conditions to cross Jackson County airport at or above 6000 before proceeding on course.

TAKEOFF OBSTACLE NOTES:

Rwy 15, trees beginning 109' from DER, 31' left of centerline, up to 100' AGL/2939' MSL.

Trees beginning 19' from DER, 53' right of centerline, up to 100' AGL/2859' MSL.

Building 221' from DER, 324' left of centerline, 25' AGL/2864' MSL.

Airplane on tarmac 137' from DER, 140' left of centerline, up to 20' AGL/2899' MSL.

Transmission tower 1763' from DER, 860' right of centerline, up to 200' AGL/2879' MSL.

Rwy 33, trees beginning 2' from DER, 182' left of centerline, up to 100' AGL/2979' MSL.

Trees beginning 6' from DER, 27' right of centerline, up to 100' AGL/2979' MSL.

TAKEOFF MINIMUMS (OBSTACLE) DEPARTURE PROCEDURES, AND DIVERSE VECTOR AREA (RADAR VECTORS)

24025

SE-2

TAKEOFF MINIMUMS (OBSTACLE) DEPARTURE PROCEDURES, AND DIVERSE VECTOR AREA (RADAR VECTORS)

24025

TARBORO, NC

TARBORO-EDGEcombe (ETC)

TAKEOFF MINIMUMS AND (OBSTACLE) DEPARTURE PROCEDURES

AMDT 1 30DEC21 (21364) (FAA)

DEPARTURE PROCEDURE:

Rwy 9, climb on heading 092° to 500 before turning right

TAKEOFF OBSTACLE NOTES:

Rwy 9, lighting 10' from DER, 104' right of centerline, 46' MSL.

Fence 69' from DER, 255' right of centerline, 8' AGL/49' MSL.

Trees beginning 132' from DER, 35' left of centerline, up to 39' AGL/78' MSL.

Trees beginning 768' from DER, 152' right of centerline, up to 36' AGL/72' MSL.

Tree 835' from DER, 7' right of centerline, 40' AGL/75' MSL.

Trees beginning 835' from DER, 88' right of centerline, up to 45' AGL/80' MSL.

Trees beginning 891' from DER, 9' left of centerline, up to 80' MSL.

Trees beginning 919' from DER, 12' right of centerline, up to 48' AGL/90' MSL.

Trees beginning 1781' from DER, 696' right of centerline, up to 123' MSL.

Tree 1929' from DER, 1010' right of centerline, 135' MSL.

Trees beginning 1988' from DER, 593' right of centerline, up to 147' MSL.

Tree 2073' from DER, 821' right of centerline, 116' AGL/149' MSL.

Trees beginning 2101' from DER, 20' right of centerline, up to 152' MSL.

Trees beginning 2433' from DER, 54' left of centerline, up to 90' AGL/126' MSL.

Trees beginning 2856' from DER, 992' left of centerline, up to 133' MSL.

Rwy 27, trees, pole beginning 6' from DER, 266' left of centerline, up to 126' MSL.

Trees, buildings, poles, vehicles on road beginning 9' from DER, crossing extended centerline, up to 119' MSL.

Trees, poles, vehicles on road beginning 53' from DER, 19' left of centerline, up to 80' AGL/135' MSL.

Trees beginning 1599' from DER, 25' right of centerline, up to 65' AGL/121' MSL.

Trees beginning 1734' from DER, 176' right of centerline, up to 75' AGL/127' MSL.

Trees beginning 1801' from DER, 22' right of centerline, up to 144' MSL.

Trees beginning 1977' from DER, 8' right of centerline, up to 155' MSL.

Tree 3887' from DER, 1471' left of centerline, 157' MSL.

Tree 3962' from DER, 1217' left of centerline, 161' MSL.

Tree 3984' from DER, 976' left of centerline, 165' MSL.

Tree 4429' from DER, 1216' left of centerline, 171' MSL.

Trees beginning 4441' from DER, 1149' left of centerline, up to 172' MSL.

Trees beginning 4570' from DER, 1374' left of centerline, up to 184' MSL.

Trees beginning 4625' from DER, 1272' left of centerline, up to 187' MSL.

Trees beginning 4714' from DER, 1167' left of centerline, up to 188' MSL.

UNION, SC

UNION COUNTY, TROY SHELTON FLD (35A)

TAKEOFF MINIMUMS AND (OBSTACLE) DEPARTURE PROCEDURES

AMDT 1 22AUG13 (22195) (FAA)

TAKEOFF OBSTACLE NOTES:

Rwy 5, trees beginning 1006' from DER, 20' right of centerline, up to 100' AGL/759' MSL.

Rwy 23, trees beginning 2115' from DER, 20' left of centerline, up to 100' AGL/679' MSL.

WADESBORO, NC

ANSON COUNTY, JEFF CLOUD FLD (AFP)

TAKEOFF MINIMUMS AND (OBSTACLE) DEPARTURE PROCEDURES

AMDT 3 03NOV22 (22307) (FAA)

TAKEOFF MINIMUMS:

Rwy 16, 300-1% or std. w/min. climb of 211' per NM to 700, or alternatively, with std. takeoff minimums and a normal 200' per NM climb gradient, takeoff must occur no later than 1500' prior to DER.

DEPARTURE PROCEDURE:

Rwy 16, climb on heading 162° to 800 before turning right.

TAKEOFF OBSTACLE NOTES:

Rwy 16, trees beginning 3' from DER, 297' left of centerline, up to 26' AGL/321' MSL.

Tree 62' from DER, 270' right of centerline, 306' MSL.

Terrain 89' from DER, 477' right of centerline, 311' MSL.

Vegetation, terrain, tree beginning 103' from DER, 328' right of centerline, up to 315' MSL.

Trees beginning 331' from DER, 460' left of centerline, up to 350' MSL.

Trees beginning 443' from DER, 153' left of centerline, up to 372' MSL.

Traverse way 1321' from DER, 574' right of centerline, 330' MSL.

Traverse way 1338' from DER, 806' right of centerline, 331' MSL.

Tree 1740' from DER, 616' right of centerline, 350' MSL.

Tree 1804' from DER, 862' right of centerline, 359' MSL.

Tree 1828' from DER, 698' right of centerline, 364' MSL.

Pole 1848' from DER, 970' right of centerline, 366' MSL.

Trees beginning 1900' from DER, 773' right of centerline, up to 395' MSL.

Tree, electrical system, transmission line beginning 2033' from DER, 109' left of centerline, up to 389' MSL.

Tree, pole, electrical system, transmission line beginning 2212' from DER, 565' right of centerline, up to 409' MSL.

Trees beginning 2828' from DER, 673' left of centerline, up to 390' MSL.

Trees beginning 2932' from DER, 511' left of centerline, up to 399' MSL.

CON'T

TAKEOFF MINIMUMS (OBSTACLE) DEPARTURE PROCEDURES, AND DIVERSE VECTOR AREA (RADAR VECTORS)

24025

SE-2

22 FEB 2024 to 21 MAR 2024

22 FEB 2024 to 21 MAR 2024

TAKEOFF MINIMUMS (OBSTACLE) DEPARTURE PROCEDURES, AND DIVERSE VECTOR AREA (RADAR VECTORS)

24025

WADESBORO, NC (CON'T)

ANSON COUNTY/JEFF CLOUD FLD (AFP) (CON'T)

Rwy 16 (CON'T), trees beginning 3356' from DER, 96' left of centerline, up to 406' MSL.
 Trees beginning 3666' from DER, 538' right of centerline, up to 410' MSL.
 Trees beginning 3944' from DER, 592' right of centerline, up to 418' MSL.
 Trees beginning 4159' from DER, 93' left of centerline, up to 85' AGL/412' MSL.
 Trees beginning 4208' from DER, 116' left of centerline, up to 92' AGL/413' MSL.
 Trees beginning 4377' from DER, 150' left of centerline, up to 89' AGL/419' MSL.
 Trees beginning 4576' from DER, 514' right of centerline, up to 421' MSL.
 Trees beginning 4799' from DER, 290' right of centerline, up to 89' AGL/423' MSL.
 Tree 4880' from DER, 527' right of centerline, 85' AGL/424' MSL.
 Tree 4887' from DER, 572' right of centerline, 428' MSL.
 Trees beginning 4893' from DER, 474' right of centerline, up to 91' AGL/429' MSL.
 Tree 4950' from DER, 533' right of centerline, 93' AGL/432' MSL.
 Trees beginning 4961' from DER, 88' right of centerline, up to 435' MSL.
 Tree 1.5 NM from DER, 1724' left of centerline, 91' AGL/543' MSL.
Rwy 34, trees beginning 15' from DER, 179' right of centerline, up to 13' AGL/305' MSL.
 Trees beginning 100' from DER, 311' left of centerline, up to 313' MSL.
 Trees beginning 117' from DER, 307' right of centerline, up to 52' AGL/331' MSL.
 Trees beginning 341' from DER, 232' right of centerline, up to 368' MSL.
 Trees beginning 428' from DER, 317' left of centerline, up to 321' MSL.
 Trees beginning 537' from DER, 313' left of centerline, up to 352' MSL.
 Tree, traverse way beginning 704' from DER, 7' left of centerline, up to 372' MSL.
 Trees beginning 1191' from DER, 343' right of centerline, up to 369' MSL.
 Trees beginning 1263' from DER, 12' right of centerline, up to 380' MSL.
 Trees beginning 1431' from DER, 9' left of centerline, up to 65' AGL/373' MSL.
 Trees beginning 1438' from DER, 4' left of centerline, up to 70' AGL/377' MSL.
 Trees beginning 1502' from DER, 7' left of centerline, up to 396' MSL.
 Trees beginning 1631' from DER, 9' left of centerline, up to 401' MSL.
 Trees beginning 1821' from DER, 12' left of centerline, up to 100' AGL/416' MSL.
 Trees beginning 2289' from DER, 89' right of centerline, up to 381' MSL.
 Tree, tank beginning 2517' from DER, 148' right of centerline, up to 384' MSL.
 Stack, tree, tank, building beginning 2616' from DER, 230' right of centerline, up to 385' MSL.
 Trees beginning 2901' from DER, 38' right of centerline, up to 394' MSL.
 Trees beginning 3243' from DER, 132' right of centerline, up to 409' MSL.
 Trees beginning 3334' from DER, 1216' right of centerline, up to 113' AGL/416' MSL.

WALLACE, NC

HENDERSON FLD (ACZ)

TAKEOFF MINIMUMS AND (OBSTACLE) DEPARTURE PROCEDURES
 ORIG 12MAR09 (22195) (FAA)

TAKEOFF MINIMUMS:

Rwy 9, 300-1 or std. w/ min. climb of 389' per NM to 400.

TAKEOFF OBSTACLE NOTES:

Rwy 9, trees 2329' from DER, 462' left of centerline, 100' AGL/119' MSL.

Pole 5056' from DER, 1074' left of centerline, 183' AGL/216' MSL.

Rwy 27, vehicles on roadway 299' from DER, 421' right of centerline, 15' AGL/54' MSL.

Trees 4916' from DER, 1296' left of centerline, 100' AGL/169' MSL.

WALNUT COVE, NC

MEADOW BROOK FLD (N63)

TAKEOFF MINIMUMS AND (OBSTACLE) DEPARTURE PROCEDURES
 AMDT 2 15NOV12 (21252) (FAA)

TAKEOFF MINIMUMS:

Rwy 16, 500-3 or std. w/ min. climb of 324' per NM to 2000.

Rwy 34, 600-3 w/ min. climb of 229' per NM to 1400 or 1800-3 for climb in visual conditions.

DEPARTURE PROCEDURE:

Rwy 16, climb heading 166° to 1400 before proceeding on course.

Rwy 34, climb heading 001° to 2800 before turning West or for climb in visual conditions: cross Meadow Brook Fld airport at or above 2300 before proceeding on course. When executing VCOA, notify ATC prior to departure.

TAKEOFF OBSTACLE NOTES:

Rwy 16, vehicle on road 428' from DER, 591' left of centerline, up to 15' AGL/674' MSL.

Trees beginning 541' from DER, 618' right of centerline, up to 65' AGL/804' MSL.

Power line 2525' from DER, 226' right of centerline, 79' AGL/716' MSL.

Tank 5738' from DER, 742' right of centerline, 157' AGL/863' MSL.

Terrain 1.7 NM from DER, 2265' right of centerline, 999' MSL.

Rwy 34, tree 1071' from DER, 517' right of centerline, 100' AGL/784' MSL.

Trees beginning 1056' from DER, 844' left of centerline, up to 65' AGL/744' MSL.

Trees 1.9 NM from DER, left and right of centerline, up to 100' AGL/1019' MSL.

22 FEB 2024 to 21 MAR 2024

22 FEB 2024 to 21 MAR 2024

TAKEOFF MINIMUMS (OBSTACLE) DEPARTURE PROCEDURES, AND DIVERSE VECTOR AREA (RADAR VECTORS)

24025

SE-2

TAKEOFF MINIMUMS (OBSTACLE) DEPARTURE PROCEDURES, AND DIVERSE VECTOR AREA (RADAR VECTORS)

24025

WALTERBORO, SC

LOW COUNTRY RGNL (RBW)

TAKEOFF MINIMUMS AND (OBSTACLE) DEPARTURE PROCEDURES

AMDT 2 02MAY13 (13122) (FAA)

TAKEOFF OBSTACLE NOTES:

Rwy 5, electrical system 28' from DER, 125' left of centerline, 3' AGL/103' MSL.

Electrical system 29' from DER, 125' right of centerline, 2' AGL/102' MSL.

Pole 139' from DER, 396' left of centerline, 4' AGL/105' MSL.

Trees beginning 1787' from DER, 242' right of centerline, up to 54' AGL/158' MSL.

Trees beginning 1903' from DER, 230' left of centerline, up to 54' AGL/186' MSL.

Trees beginning 2898' from DER, 488' right of centerline, up to 75' AGL/196' MSL.

Rwy 9, terrain beginning 51' from DER, 195' left of centerline, up to 96' MSL.

Rwy 17, trees beginning 1487' from DER, 441' right of centerline, up to 106' AGL/167' MSL.

Trees beginning 1579' from DER, 836' left of centerline, 117' AGL/176' MSL.

Rwy 23, trees beginning 15' from DER, 499' right of centerline, up to 80' AGL/161' MSL.

Trees beginning 1493' from DER, 10' right of centerline, up to 80' AGL/192' MSL.

Trees beginning 1492' from DER, 15' left of centerline, up to 86' AGL/200' MSL.

Rwy 27, tank 4946' from DER, 151' right of centerline, 140' AGL/219' MSL.

WASHINGTON, NC

WASHINGTON-WARREN (OCW)

TAKEOFF MINIMUMS AND (OBSTACLE) DEPARTURE PROCEDURES

AMDT 1B 20JUN19 (19171) (FAA)

TAKEOFF MINIMUMS:

Rwy 23, 300-1 or std. w/min. climb of 250' per NM to 300.

DEPARTURE PROCEDURE:

Rwys 17, 23, 35, climb runway heading to 400 before turning.

TAKEOFF OBSTACLE NOTES:

Rwy 5, vehicles on road 223' from DER, 397' left of centerline, 53' MSL.

Tree 650' from DER, 322' left of centerline, 136' MSL.

Trees beginning 954' from DER, 575' left of centerline, up to 146' MSL.

Tree 1825' from DER, 634' right of centerline, 155' MSL.

Rwy 17, trees beginning 19' from DER, 374' right of centerline, up to 108' MSL.

Tree 1774' from DER, 409' left of centerline, 103' MSL.

Tree 1885' from DER, 382' left of centerline, 112' MSL.

Tree 4174' from DER, 1230' left of centerline, 159' MSL.

Rwy 23, tree 32' from DER, 474' left of centerline, 63' MSL.

Tree 353' from DER, 391' right of centerline, 60' MSL.

Tree 529' from DER, 408' right of centerline, 61' MSL.

Trees beginning 1455' from DER, 88' left of centerline, up to 77' MSL.

Tree 1698' from DER, 625' left of centerline, 87' MSL.

Tree 1711' from DER, 853' right of centerline, 101' MSL.

Tower 5339' from DER, 580' left of centerline, 157' AGL/170' MSL.

Rwy 35, vehicles on road 287' from DER, 393' right of centerline, 51' MSL.

Tree 345' from DER, 437' right of centerline, 121' MSL.

Trees 799' from DER, 420' left of centerline, 106' MSL.

Trees beginning 1206' from DER, 161' left of centerline, up to 145' MSL.

Trees beginning 1622' from DER, 37' left of centerline, up to 148' MSL.

Tree 2134' from DER, 565' right of centerline, 137' MSL.

Tree 2839' from DER, 335' right of centerline, 143' MSL.

WAXHAW, NC

JAARS-TOWNSEND (N52)

TAKEOFF MINIMUMS AND (OBSTACLE) DEPARTURE PROCEDURES

ORIG 12MAR09 (09071) (FAA)

TAKEOFF MINIMUMS:

Rwy 4, 300-1 or std. w/ min. climb of 255' per NM to 900, or alternatively, with std. takeoff minimums and a normal 200' per NM climb gradient, takeoff must occur no later than 2200' prior to DER.

TAKEOFF OBSTACLE NOTES:

Rwy 4, trees beginning 3' from DER, left and right of centerline, up to 100' AGL/759' MSL.

Rwy 22, trees beginning 2' from DER, left and right of centerline, up to 100' AGL/709' MSL.

WHITEVILLE, NC

COLUMBUS COUNTY MUNI (CPC)

TAKEOFF MINIMUMS AND (OBSTACLE) DEPARTURE PROCEDURES

ORIG 02JUL09 (09183) (FAA)

TAKEOFF OBSTACLE NOTES:

Rwy 6, trees beginning 2145' from DER, 553' right of centerline, up to 100' AGL/189' MSL.

Trees beginning 2690' from DER, 838' left of centerline, up to 100' AGL/169' MSL.

Rwy 24, trees beginning 1706' from DER, 831' right of centerline, up to 100' AGL/209' MSL.

Trees beginning 732' from DER, 396' left of centerline, up to 100' AGL/209' MSL.

TAKEOFF MINIMUMS (OBSTACLE) DEPARTURE PROCEDURES, AND DIVERSE VECTOR AREA (RADAR VECTORS)

24025

SE-2


**TAKEOFF MINIMUMS (OBSTACLE) DEPARTURE PROCEDURES, AND
DIVERSE VECTOR AREA (RADAR VECTORS)**


24025

WILLIAMSTON, NC**MARTIN COUNTY (MCZ)****TAKEOFF MINIMUMS AND (OBSTACLE) DEPARTURE PROCEDURES**

ORIG-A 10AUG23 (23222) (FAA)

TAKEOFF OBSTACLE NOTES:**Rwy 3**, trees beginning 5' from DER, 400' right of centerline, up to 118' MSL.

Tree 748' from DER, 640' left of centerline, 109' MSL.

Trees beginning 819' from DER, 519' left of centerline, up to 114' MSL.

Trees beginning 877' from DER, 384' left of centerline, up to 122' MSL.

Tree 1412' from DER, 530' left of centerline, 127' MSL.

Trees beginning 1600' from DER, 573' right of centerline, up to 127' MSL.

Tree 1940' from DER, 996' left of centerline, 147' MSL.

Tree 1994' from DER, 1017' right of centerline, 129' MSL.

Trees beginning 2017' from DER, 924' left of centerline, up to 149' MSL.

Trees beginning 2023' from DER, 492' right of centerline, up to 152' MSL.

Tree 3058' from DER, 123' left of centerline, 154' MSL.

Trees beginning 3075' from DER, 62' left of centerline, up to 158' MSL.

Trees beginning 3255' from DER, 23' left of centerline, up to 172' MSL.

Tree 3283' from DER, 15' right of centerline, 169' MSL.

Trees beginning 3443' from DER, 206' left of centerline, up to 174' MSL.

Tree 3787' from DER, 408' right of centerline, 172' MSL.

Trees beginning 3900' from DER, 427' right of centerline, up to 174' MSL.

Tree 4018' from DER, 396' right of centerline, 178' MSL.

Rwy 21, tree 3' from DER, 338' right of centerline, 86' MSL.

Tree 37' from DER, 374' left of centerline, 82' MSL.

Tree, traverse way beginning 88' from DER, 157' left of centerline, up to 132' MSL.

Trees beginning 92' from DER, 222' right of centerline, up to 109' MSL.

Tree 148' from DER, 367' right of centerline, 154' MSL.

Trees beginning 171' from DER, 311' right of centerline, up to 157' MSL.

Tree, building, pole beginning 357' from DER, 25' right of centerline, up to 165' MSL.

Trees beginning 1148' from DER, 4' left of centerline, up to 137' MSL.

Trees beginning 2478' from DER, 754' left of centerline, up to 147' MSL.

WILMINGTON, NC**WILMINGTON INTL(ILM)****TAKEOFF MINIMUMS AND (OBSTACLE) DEPARTURE PROCEDURES**

AMDT 1 10MAY07 (07130) (FAA)

TAKEOFF OBSTACLE NOTES:**Rwy 6**, tree 2723' from DER, 558' left of centerline 57' AGL/90' MSL.

Tree 3201' from DER, 401' right of centerline 73' AGL/110' MSL.

Tree 3552' from DER, 643' right of centerline, 78' AGL/118' MSL.

Rwy 17, multiple trees beginning 177' from DER, 438' right of centerline, up to 32' AGL/49' MSL.

Tree 187' from DER, 545' left of centerline, 24' AGL/41' MSL.

Multiple trees beginning 418' from DER, 540' left of centerline, up to 39' AGL/53' MSL.

Tree 620' from DER, 246' left of centerline, 24' AGL/38' MSL.

Tree 1468' from DER, 684' right of centerline, 66' AGL/83' MSL.

Tree 1689' from DER, 592' right of centerline, 52' AGL/69' MSL.

Transmission lines 3347' from DER, 1300' left to 1300' right of centerline, 135' AGL/160' MSL.

Rwy 24, tree 163' from DER, 454' left of centerline, 61' AGL/75' MSL.

Multiple trees beginning 1663' from DER, 277' left of centerline, up to 66' AGL/83' MSL.

Rwy 35, tree 1500' from DER, 300' right of centerline, 50' AGL/83' MSL.

Funnel 1796' from DER, 882' left of centerline, 57' AGL/90' MSL.

Multiple trees beginning 1916' from DER, 138' right of centerline, up to 94' AGL/131' MSL.

Multiple trees beginning 2486' from DER, 143' left of centerline, up to 107' AGL/140' MSL.

22 FEB 2024 to 21 MAR 2024

22 FEB 2024 to 21 MAR 2024


**TAKEOFF MINIMUMS (OBSTACLE) DEPARTURE PROCEDURES, AND
DIVERSE VECTOR AREA (RADAR VECTORS)**


24025

SE-2


**TAKEOFF MINIMUMS (OBSTACLE) DEPARTURE PROCEDURES, AND
DIVERSE VECTOR AREA (RADAR VECTORS)**


24025

WILSON, NC**WILSON INDUSTRIAL AIR CENTER (W03)****TAKEOFF MINIMUMS AND (OBSTACLE) DEPARTURE PROCEDURES**

AMDT 1 08NOV18 (18312) (FAA)

DEPARTURE PROCEDURE:**Rwys 3, 9**, climbing left turn on heading 330° to 2500 before proceeding on course.**Rwys 15, 21**, climbing right turn on heading 260° to 2500 before proceeding on course.**Rwy 27**, climbing left turn on heading 260° to 2500 before proceeding on course.**Rwy 33**, climb heading 338° to 2300 before turning left.**TAKEOFF OBSTACLE NOTES:****Rwy 3**, trees beginning 140' from DER, 425' right of centerline, up to 174' MSL.

Trees beginning 503' from DER, 487' right of centerline, up to 177' MSL.

Vegetation 575' from DER, 577' left of centerline, 176' MSL.

Trees beginning 600' from DER, 534' right of centerline, up to 178' MSL.

Trees beginning 808' from DER, 515' right of centerline, up to 189' MSL.

Tree 908' from DER, 724' left of centerline, 196' MSL.

Trees beginning 1031' from DER, 605' left of centerline, up to 199' MSL.

Trees beginning 1101' from DER, 658' left of centerline, up to 206' MSL.

Trees beginning 1182' from DER, 564' left of centerline, up to 209' MSL.

Tree 1699' from DER, 687' left of centerline, 211' MSL.

Trees beginning 1719' from DER, 568' left of centerline, up to 222' MSL.

Trees beginning 1856' from DER, 619' left of centerline, up to 233' MSL.

Tree 2194' from DER, 1073' right of centerline, 211' MSL.

Tree 2251' from DER, 884' left of centerline, 236' MSL.

Tree 2615' from DER, 1103' left of centerline, 243' MSL.

Tree 2615' from DER, 400' right of centerline, 222' MSL.

Trees beginning 2651' from DER, 549' left of centerline, up to 249' MSL.

Rwy 9, tree 9' from DER, 473' left of centerline, 169' MSL.

Tree 17' from DER, 265' left of centerline, 170' MSL.

Trees beginning 50' from DER, 257' left of centerline, up to 173' MSL.

Tree, pole beginning 69' from DER, 70' right of centerline, up to 197' MSL.

Tree 283' from DER, 291' left of centerline, 176' MSL.

Tree 318' from DER, 534' left of centerline, 177' MSL.

Trees beginning 328' from DER, 317' left of centerline, up to 178' MSL.

Trees beginning 414' from DER, 90' left of centerline, up to 182' MSL.

Trees beginning 418' from DER, 68' left of centerline, up to 184' MSL.

Trees beginning 490' from DER, 174' left of centerline, up to 185' MSL.

Trees beginning 533' from DER, 9' left of centerline, up to 188' MSL.

Trees beginning 611' from DER, 81' left of centerline, up to 189' MSL.

Trees beginning 670' from DER, 35' left of centerline, up to 195' MSL.

Trees beginning 679' from DER, 35' right of centerline, up to 208' MSL.

Trees beginning 720' from DER, 23' left of centerline, up to 199' MSL.

Tree 863' from DER, 422' left of centerline, 203' MSL.

Trees beginning 872' from DER, 22' left of centerline, up to 215' MSL.

Trees beginning 919' from DER, 126' left of centerline, up to 225' MSL.

Trees beginning 1004' from DER, 60' right of centerline, up to 231' MSL.

Trees beginning 1006' from DER, 30' left of centerline, up to 236' MSL.

Trees beginning 1104' from DER, 12' right of centerline, up to 239' MSL.

Trees beginning 1281' from DER, 113' right of centerline, up to 254' MSL.

Trees beginning 2121' from DER, 527' right of centerline, up to 258' MSL.

Rwy 15, trees beginning 4' from DER, 253' right of centerline, up to 178' MSL.

Trees beginning 126' from DER, 466' left of centerline, up to 179' MSL.

Trees beginning 150' from DER, 247' right of centerline, up to 190' MSL.

Trees beginning 179' from DER, 325' left of centerline, up to 188' MSL.

Trees beginning 287' from DER, 304' left of centerline, up to 190' MSL.

Trees beginning 317' from DER, 68' left of centerline, up to 197' MSL.

Trees beginning 463' from DER, 39' left of centerline, up to 200' MSL.

Trees beginning 513' from DER, 19' right of centerline, up to 192' MSL.

Trees beginning 516' from DER, 42' left of centerline, up to 203' MSL.

Trees beginning 552' from DER, 3' right of centerline, up to 202' MSL.

Trees beginning 555' from DER, 2' left of centerline, up to 205' MSL.

Tree 1115' from DER, 434' left of centerline, 206' MSL.

Tree 1310' from DER, 356' left of centerline, 211' MSL.

Tree 2460' from DER, 565' right of centerline, 245' MSL.

Tree 3075' from DER, 642' left of centerline, 258' MSL.

CON'T

22 FEB 2024 to 21 MAR 2024

22 FEB 2024 to 21 MAR 2024


**TAKEOFF MINIMUMS (OBSTACLE) DEPARTURE PROCEDURES, AND
DIVERSE VECTOR AREA (RADAR VECTORS)**


24025

SE-2


**TAKEOFF MINIMUMS (OBSTACLE) DEPARTURE PROCEDURES, AND
DIVERSE VECTOR AREA (RADAR VECTORS)**


24025

WILSON, NC (CON'T)**WILSON INDUSTRIAL AIR CENTER (W03) (CON'T)****Rwy 21**, trees beginning 33' from DER, 422' right of centerline, up to 174' MSL.

Trees beginning 98' from DER, 355' right of centerline, up to 192' MSL.

Tree 204' from DER, 523' left of centerline, 178' MSL.

Trees beginning 371' from DER, 448' left of centerline, up to 190' MSL.

Trees beginning 705' from DER, 468' right of centerline, up to 199' MSL.

Trees beginning 924' from DER, 515' right of centerline, up to 207' MSL.

Trees beginning 1214' from DER, 378' left of centerline, up to 195' MSL.

Trees beginning 1269' from DER, 536' right of centerline, up to 213' MSL.

Trees beginning 1316' from DER, 574' left of centerline, up to 196' MSL.

Tree 1420' from DER, 613' left of centerline, 201' MSL.

Trees beginning 1537' from DER, 546' right of centerline, up to 239' MSL.

Trees beginning 1638' from DER, 483' right of centerline, up to 257' MSL.

WINNSBORO, SC**FAIRFIELD COUNTY (FDW)****TAKEOFF MINIMUMS AND (OBSTACLE) DEPARTURE PROCEDURES**

AMDT 1 07DEC17 (17341) (FAA)

TAKEOFF OBSTACLE NOTES:**Rwy 4**, tree 63' from DER, 468' right of centerline, 601' MSL.

Tree 883' from DER, 586' left of centerline, 605' MSL.

Tree 953' from DER, 644' right of centerline, 615' MSL.

Tree 1213' from DER, 709' right of centerline, 630' MSL.

Tree 1488' from DER, 636' right of centerline, 637' MSL.

Tree 1576' from DER, 909' left of centerline, 621' MSL.

Tree 1583' from DER, 738' left of centerline, 627' MSL.

Trees, beginning 1659' from DER, 767' right of centerline, up to 644' MSL.

Rwy 22, tree 452' from DER, 547' right of centerline, 601' MSL.

Trees, beginning 715' from DER, 536' right of centerline, up to 610' MSL.

Tree 921' from DER, 716' right of centerline, 617' MSL.

Trees, beginning 1185' from DER, 516' right of centerline, up to 619' MSL.

Tree 1447' from DER, 603' right of centerline, 622' MSL.

Trees, beginning 1607' from DER, 727' right of centerline, up to 626' MSL.

Trees, beginning 2102' from DER, 602' left of centerline, up to 650' MSL.

WINSTON SALEM, NC**SMITH REYNOLDS (INT)****TAKEOFF MINIMUMS AND (OBSTACLE) DEPARTURE PROCEDURES**

AMDT 6 15JAN09 (23166) (FAA)

TAKEOFF MINIMUMS:**Rwy 22**, 500-2% or std. with a min. climb of 330' per NM to 1600.**TAKEOFF OBSTACLE NOTES:****Rwy 4**, multiple trees beginning 1014' from DER, 159' left of centerline, up to 92' AGL/1041' MSL.

Multiple trees beginning 2' from DER, 195' right of centerline, up to 62' AGL/1051' MSL.

Rwy 15, bush and multiple trees beginning 109' from DER, 237' left of centerline, up to 81' AGL/960' MSL.

Multiple trees beginning 123' from DER, 433' right of centerline, up to 66' AGL/945' MSL.

Rwy 22, multiple trees beginning 376' from DER, 136' left of centerline, up to 65' AGL/1014' MSL.

Antenna 4538' from DER, 1044' left of centerline, 189' AGL/1138' MSL.

Tower 2.1 NM from DER, 2784' left of centerline, 468' AGL/1395' MSL.

Antenna on building 2.3 NM from DER, 3230' left of centerline, 460' AGL/1376' MSL.

Rwy 33, floodlight, multiple hangars, poles, and trees beginning 230' from DER, 41' left of centerline, up to 74' AGL/1083' MSL.

Pole, windsock, multiple buildings and trees beginning 13' from DER, 141' right of centerline, up to 85' AGL/1084' MSL.

22 FEB 2024 to 21 MAR 2024

22 FEB 2024 to 21 MAR 2024


**TAKEOFF MINIMUMS (OBSTACLE) DEPARTURE PROCEDURES, AND
DIVERSE VECTOR AREA (RADAR VECTORS)**


24025

SE-2