

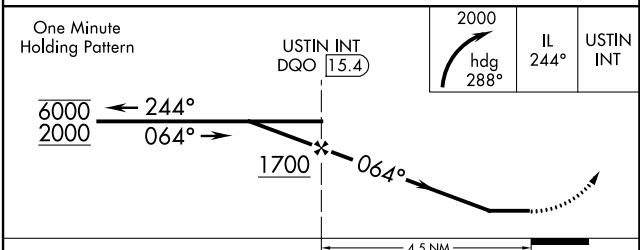
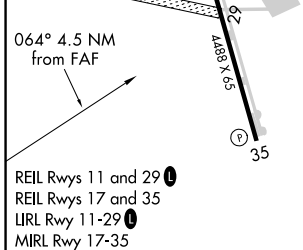
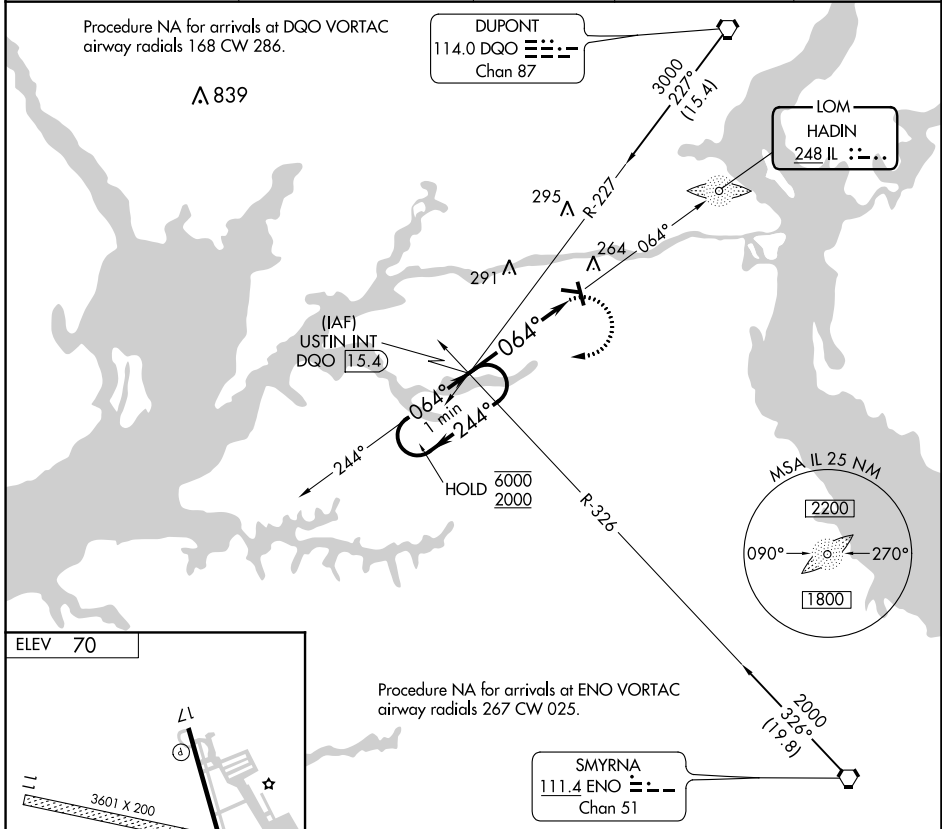
LOM IL <b>248</b>	APP CRS <b>064°</b>	Rwy Idg TDZE Apt Elev	<b>N/A</b> <b>N/A</b> <b>70</b>
----------------------	------------------------	-----------------------------	---------------------------------------

**NDB-A**  
SUMMIT (E.V.Y)

**⚠ NA** Circling NA to Rwy 11 and 29. Circling Rwy 17 NA at night. When local altimeter setting not received, use Wilmington altimeter setting and increase all MDA 40 feet and Circling Cat C visibility ¼ SM.

MISSED APPROACH: Climbing right turn to 2000 on heading 288° and 244° bearing from HADIN LOM to USTIN INT/DGO 15.4 DME and hold, continue climb-in-hold to 2000.

AWOS-3 <b>132.325</b>	PHILADELPHIA APP CON <b>118.35 323.1</b>	CLNC DEL <b>125.3</b>	UNICOM <b>122.725</b> (CTAF)	<b>123.5</b> <b>0</b>
--------------------------	---	--------------------------	---------------------------------	-----------------------



FAF to MAP 4.5 NM								
Knots	60	90	120	150	180			
Min:Sec	4:30	3:00	2:15	1:48	1:30			
CATEGORY	A		B		C		D	
CIRCLING	660-1		590 (600-1)		660-1½		590 (600-1½)	
					660-2		590 (600-2)	

NE-3, 25 FEB 2021 to 25 MAR 2021

NE-3, 25 FEB 2021 to 25 MAR 2021

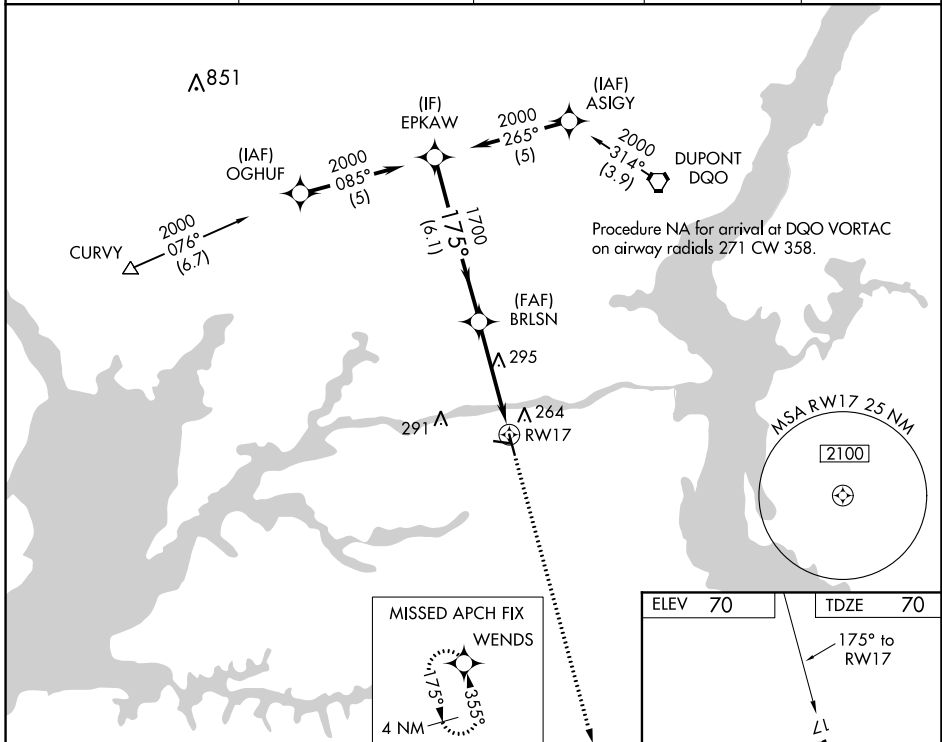
WAAS CH <b>49002</b> <b>W17A</b>	APP CRS <b>175°</b>	Rwy Idg TDZE Apt Elev	<b>4488</b> <b>70</b> <b>70</b>
--	------------------------	-----------------------------	---------------------------------------

# RNAV (GPS) RWY 17

SUMMIT (EVY)

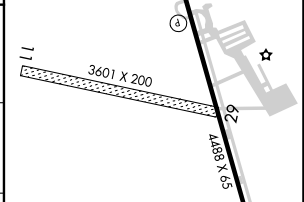
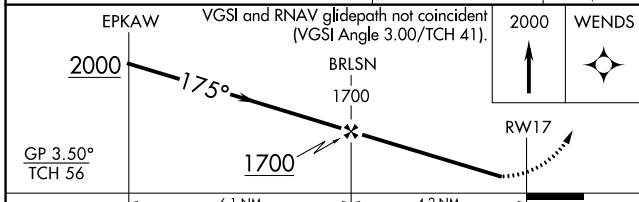
RNP APCH.		MISSED APPROACH: Climb to 2000 direct WENDS and hold.
<p>Procedure NA at night. Rwy 17 helicopter visibility reduction below 1 SM NA. Baro-VNAV NA when using Wilmington altimeter setting. For uncompensated Baro-VNAV systems, LNAV/VNAV NA below -15°C or above 47°C. When local altimeter setting not received, use Wilmington altimeter setting and increase all DA 27 feet, all MDA 40 feet and LNAV Cat C visibility 1/8 SM.</p>		

AWOS-3 <b>132,325</b>	PHILADELPHIA APP CON <b>118.35 323.1</b>	CLNC DEL <b>125.3</b>	UNICOM <b>122.725</b> (CTAF)	<b>123.5</b>
--------------------------	---	--------------------------	---------------------------------	--------------



NE-3, 25 FEB 2021 to 25 MAR 2021

NE-3, 25 FEB 2021 to 25 MAR 2021



CATEGORY	A	B	C	D
LPV DA	541-1½	471 (500-1½)		NA
LNAV/VNAV DA	619-1¾	549 (600-1¾)		NA
LNAV MDA	560-1	490 (500-1)	560-1⅜ 490 (500-1⅜)	NA

ELEV 70	TDZE 70
<p>REIL Rwy 11 and 29 </p> <p>REIL Rwy 17 and 35 </p> <p>LRL Rwy 11-29 </p> <p>MRL Rwy 17-35 </p>	

