

WAAS CH 49242 W12A	APP CRS 111°	Rwy Idg TDZE Apt Elev	3212 280 280
--	------------------------	-----------------------------	---

RNAV (GPS) RWY 12

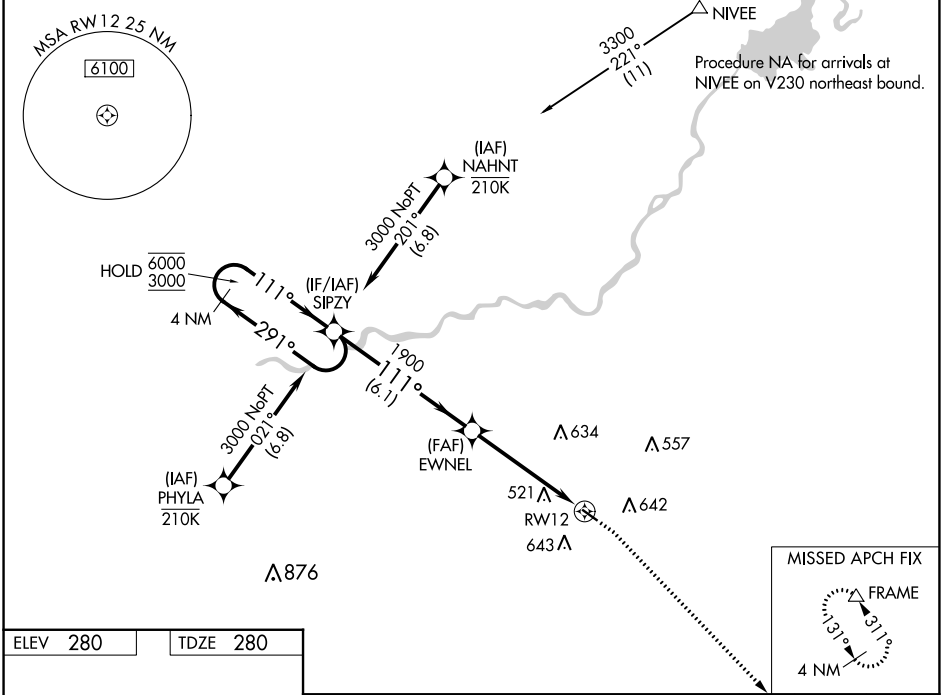
FRESNO CHANDLER EXEC (FCH)

RNP APCH-GPS.

▼ Circling Rwy 30 NA at night. Rwy 12 helicopter visibility reduction below 3/4 SM NA.
▲ For uncompensated Baro-VNAV systems, LNAV/VNAV NA below -1° C or above 54°C.

MISSED APPROACH: Climb to 800 then climbing right turn to 2000 direct FRAME and hold.

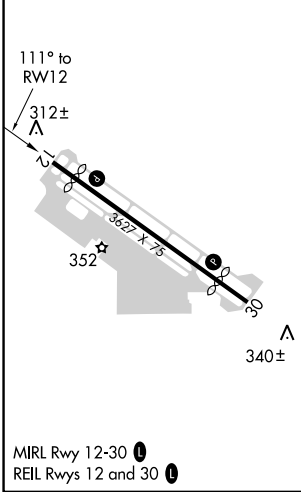
AWOS-3 135.225	FRESNO APP CON 119.0 323.25	CLNC DEL 119.0	UNICOM 123.0 (CTAF) 0
--------------------------	---------------------------------------	--------------------------	---------------------------------



SW-2, 22 FEB 2024 to 21 MAR 2024

SW-2, 22 FEB 2024 to 21 MAR 2024

ELEV 280	TDZE 280
----------	----------



4 NM Holding Pattern 6000 ← 291° 3000 → 111° GP 3.00° TCH 40	SIPZY	EWNEL	800	2000	FRAME																								
	4 NM	1.4 NM to RWY 12	↑	↷	△																								
	6.1 NM	3.5 NM	1.4 NM																										
<table border="1"> <thead> <tr> <th>CATEGORY</th> <th>A</th> <th>B</th> <th>C</th> <th>D</th> </tr> </thead> <tbody> <tr> <td>LPV DA</td> <td colspan="3">530-1 250 (300-1)</td> <td>NA</td> </tr> <tr> <td>LNAV/VNAV DA</td> <td colspan="3">809-1½ 529 (600-1½)</td> <td>NA</td> </tr> <tr> <td>LNAV MDA</td> <td>780-1 500 (500-1)</td> <td colspan="2">780-1⅜ 500 (500-1⅜)</td> <td>NA</td> </tr> <tr> <td>■ CIRCLING</td> <td>960-1 680 (700-1)</td> <td colspan="2">960-2 680 (700-2)</td> <td>NA</td> </tr> </tbody> </table>	CATEGORY	A	B	C	D	LPV DA	530-1 250 (300-1)			NA	LNAV/VNAV DA	809-1½ 529 (600-1½)			NA	LNAV MDA	780-1 500 (500-1)	780-1⅜ 500 (500-1⅜)		NA	■ CIRCLING	960-1 680 (700-1)	960-2 680 (700-2)		NA				
CATEGORY	A	B	C	D																									
LPV DA	530-1 250 (300-1)			NA																									
LNAV/VNAV DA	809-1½ 529 (600-1½)			NA																									
LNAV MDA	780-1 500 (500-1)	780-1⅜ 500 (500-1⅜)		NA																									
■ CIRCLING	960-1 680 (700-1)	960-2 680 (700-2)		NA																									

RNAV (GPS) RWY 30

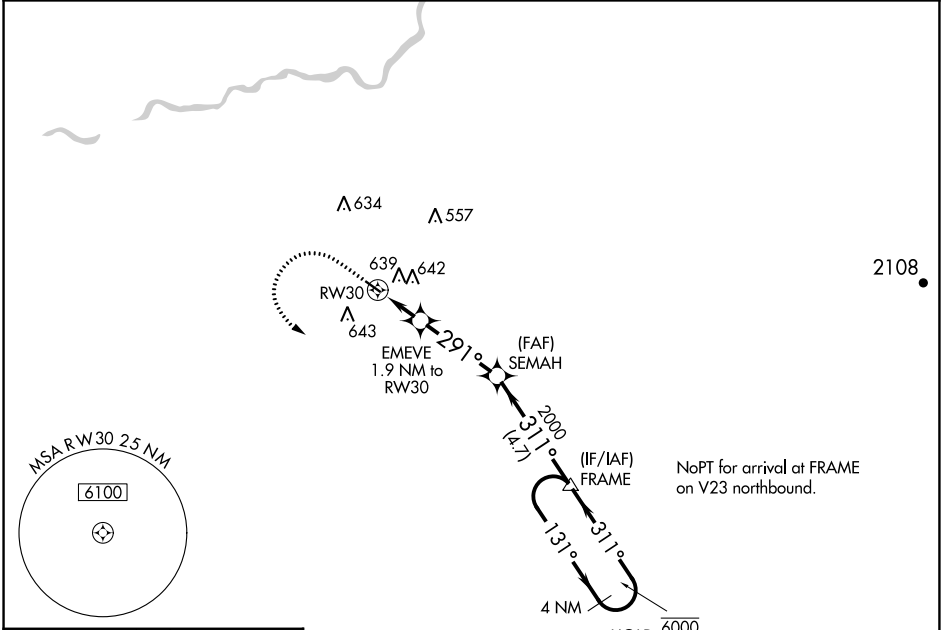
FRESNO CHANDLER EXEC (F'CH)

APP CRS 291°	Rwy Idg 3089
	TDZE 280
	Apt Elev 280

RNP APCH. **▼** Straight-in Rwy 30 NA at night, Circling Rwy 30 NA at night.
Rwy 30 helicopter visibility reduction below 1 SM NA.

MISSED APPROACH: Climb to 1000 then climbing left turn to 2000 direct FRAME and hold.

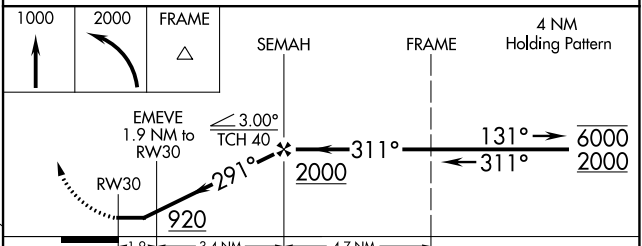
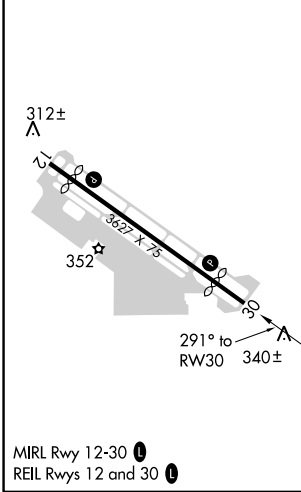
AWOS-3 135.225	FRESNO APP CON 119.0 323.25	CLNC DEL 119.0	UNICOM 123.0 (CTAF) ①
--------------------------	---------------------------------------	--------------------------	---------------------------------



SW-2, 22 FEB 2024 to 21 MAR 2024

SW-2, 22 FEB 2024 to 21 MAR 2024

ELEV 280	TDZE 280
----------	----------



CATEGORY	A	B	C	D
LNVA MDA	800-1	520 (600-1)	800-1 3/8 520 (600-1 3/8)	NA
C CIRCLING	960-1	680 (700-1)	960-2 680 (700-2)	NA