

LOC/DME I-JUH 109.35 Chan 30(Y)	APP CRS 276°	Rwy Idg TDZE Apt Elev	5002 3142 3178
---	------------------------	-----------------------------	---

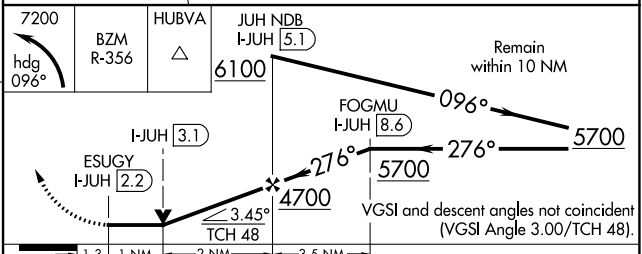
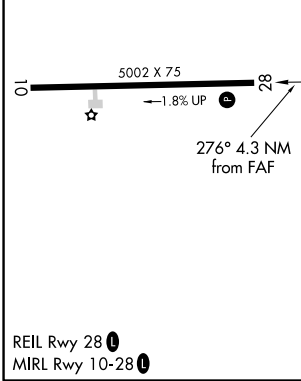
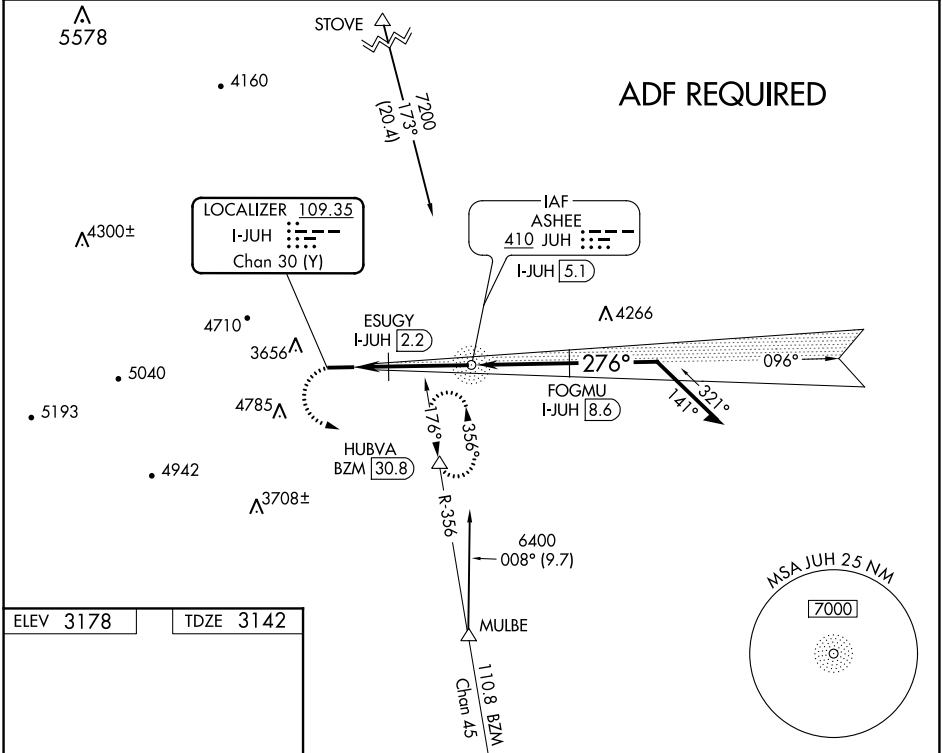
LOC RWY 28

ASHE COUNTY (GEV)

NA Circling Rwy 10 NA at night. DME required. Rwy 28 helicopter visibility reduction below 3/4 SM NA. VDP NA when using Marion/Wytheville altimeter setting. When local altimeter setting not received, use Marion/Wytheville altimeter setting and increase all MDA 160 feet and S-28 Cats C/D visibility 1/2 mile.

MISSED APPROACH: Climbing left turn to 7200 on heading 096° and BZM VOR/DME R-356 to HUBVA/BZM 30.8 DME and hold, continue climb-in-hold to 7200.

AWOS-3 120.675	ATLANTA CENTER 125.15 263.0	UNICOM 122.8 (CTAF)
--------------------------	---------------------------------------	-------------------------------



REIL Rwy 28	MIRL Rwy 10-28				
7200	BZM R-356	HUBVA	JUH NDB I-JUH (5.1)	6100	Remain within 10 NM
1.3	1 NM	2 NM	3.5 NM		
CATEGORY	A	B	C	D	
S-28	3860-1 1/2	718 (700-1 1/2)	3860-2	718 (700-2)	
CIRCLING	4240-1 1/2	1062 (1100-1 1/2)			NA

SE-2, 28 JAN 2021 to 25 FEB 2021

SE-2, 28 JAN 2021 to 25 FEB 2021

WAAS CH 70437 W28A	APP CRS 276°	Rwy Idg TDZE Apt Elev	5002 3142 3178
--	------------------------	-----------------------------	---

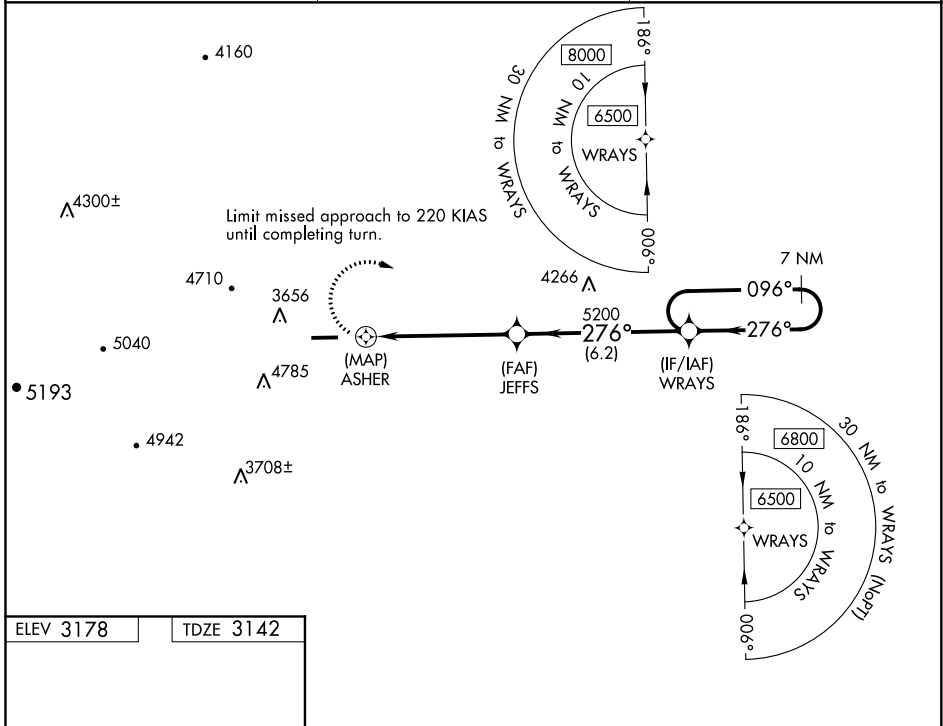
RNAV (GPS) RWY 28

ASHE COUNTY (GEV)

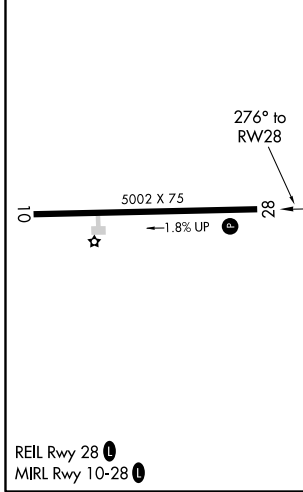
⚠ Circling Rwy 10 NA at night. Circling NA for Cat D north of Rwy 10-28. DME/DME RNP-0.3 NA. Rwy 28 helicopter visibility reduction below 3/4 SM NA. VDP NA when using Marion/Wytheville altimeter setting. When local altimeter setting not received, use Marion/Wytheville altimeter setting and increase all MDA 160 feet and LP and LNAV Cat B visibility 1/4 mile and LP and LNAV Cats C/D visibility 1/2 mile. Cats C/D Circling NA when using Marion/Wytheville altimeter setting.

⚠ MISSED APPROACH: Climbing right turn to 6500 direct WRAYS and hold.

AWOS-3 120.675	ATLANTA CENTER 125.15 263.0	UNICOM 122.8 (CTAF) ①
--------------------------	---------------------------------------	---------------------------------



ELEV 3178	TDZE 3142
-----------	-----------



	6500	WRAYS		
	1.1	1.5	3.9 NM	6.2 NM
CATEGORY	A	B	C	D
LP MDA	3960-1¼	818 (800-1¼)	3960-2½	818 (800-2½)
LNAV MDA	4060-1¼	918 (900-1¼)	4060-2½	918 (900-2½)
ⓐ CIRCLING	4240-1¼ 1062 (1100-1¼)	4240-1½ 1062 (1100-1½)	5140-3	1962 (2000-3)

SE-2, 28 JAN 2021 to 25 FEB 2021

SE-2, 28 JAN 2021 to 25 FEB 2021