

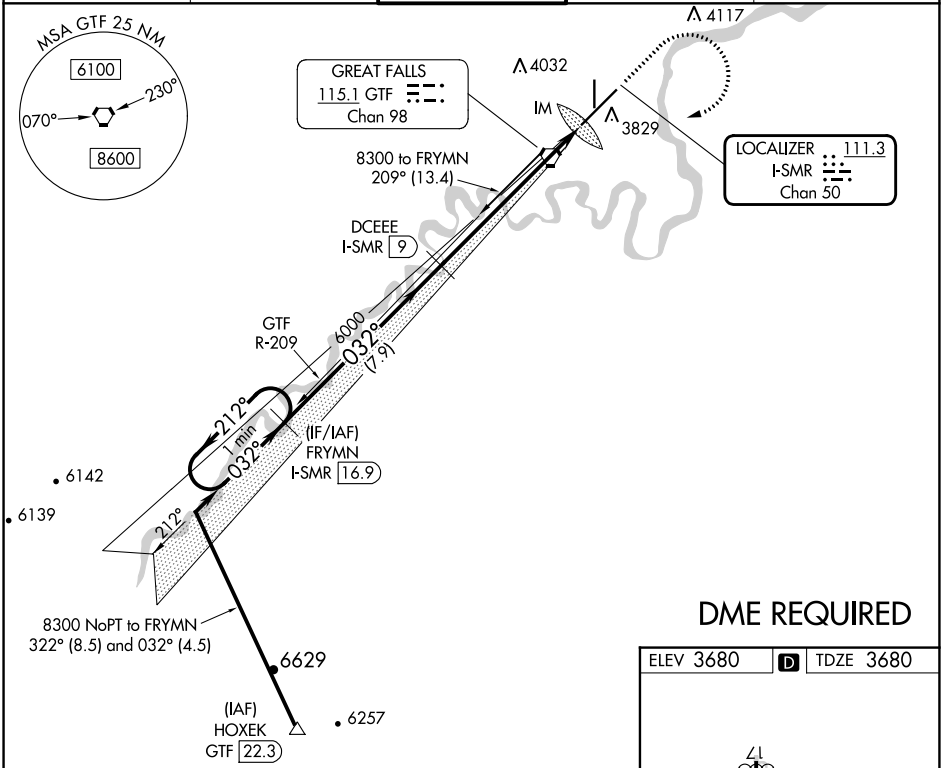
LOC/DME I-SMR <b>111.3</b> Chan 50	APP CRS <b>032°</b>	Rwy Idg <b>10502</b> TDZE <b>3680</b> Apt Elev <b>3680</b>
--	------------------------	--

# ILS RWY 3 (CAT II & III)

GREAT FALLS INTL (GTF)

<p><b>⚠</b> CAT II: RVR 1000 authorized with specific OPSPEC, MSPEC, or LOA approval and use of autoland or HUD to touchdown. DME required.</p>	<p>ALSF-2</p>	<p>MISSED APPROACH: Climb to 5000 then climbing right turn to 8300 direct GTF VORTAC then on GTF VORTAC R-209 to FRYMNI/I-SMR 16.9 DME and hold.</p>
---	---------------	--

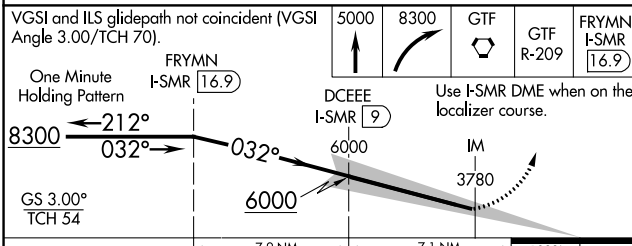
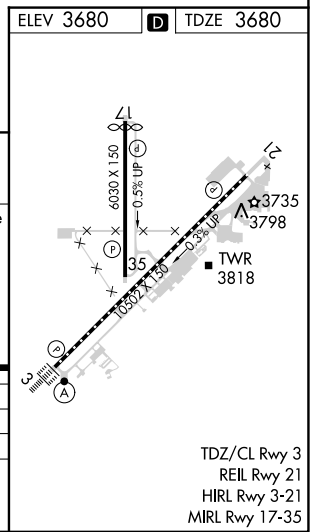
ATIS <b>126.6 269.0</b>	GREAT FALLS APP CON <b>128.6 379.175</b>	GREAT FALLS TOWER <b>118.7 282.2</b>	GND CON <b>121.7 348.6</b>	CLNC DEL <b>121.7 348.6</b>
----------------------------	---	---	-------------------------------	--------------------------------



NW-1, 22 FEB 2024 to 21 MAR 2024

NW-1, 22 FEB 2024 to 21 MAR 2024

## DME REQUIRED



CATEGORY	A	B	C	D
S-ILS 3	CAT II RA 96/12 100 DA 3780			
S-ILS 3	CAT III RVR 06			
<b>CATEGORY II &amp; III ILS - SPECIAL AIRCREW &amp; AIRCRAFT CERTIFICATION REQUIRED</b>				

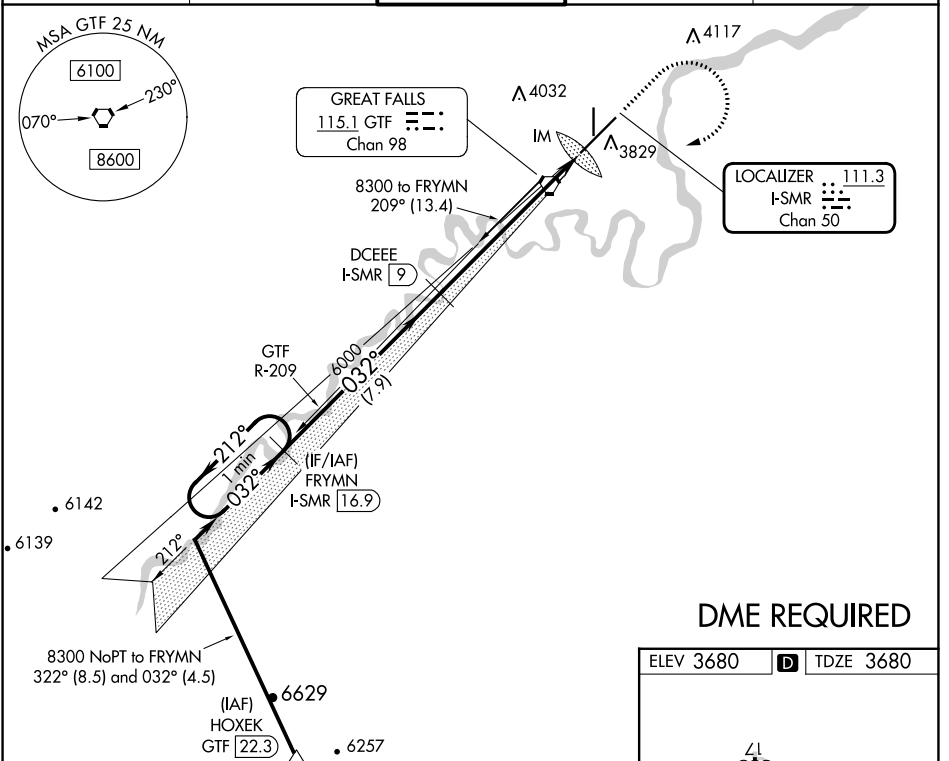
LOC/DME I-SMR <b>111.3</b> Chan 50	APP CRS <b>032°</b>	Rwy Idg <b>10502</b> TDZE <b>3680</b> Apt Elev <b>3680</b>
--	------------------------	--

# ILS RWY 3 (SA CAT I)

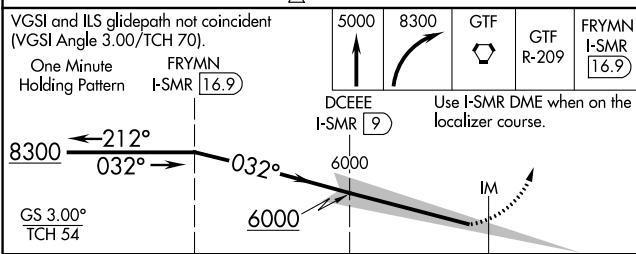
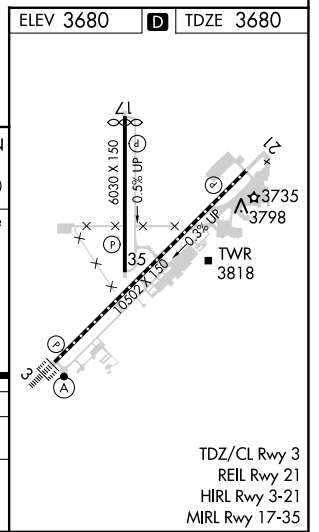
GREAT FALLS INTL (GTF)

<p>Requires specific OPSPEC, MSPEC, or LOA approval and use of HUD to DH. DME required.</p>	<p>ALSIF-2</p>	<p>MISSED APPROACH: Climb to 5000 then climbing right turn to 8300 direct GTF VORTAC then on GTF VORTAC R-209 to FRYMNI/I-SMR 16.9 DME and hold.</p>
---	----------------	--

ATIS <b>126.6 269.0</b>	GREAT FALLS APP CON <b>128.6 379.175</b>	GREAT FALLS TOWER <b>118.7 282.2</b>	GND CON <b>121.7 348.6</b>	CLNC DEL <b>121.7 348.6</b>
----------------------------	---	---	-------------------------------	--------------------------------



## DME REQUIRED



CATEGORY	A	B	C	D
S-ILS 3	RA 140/14 150 DA 3830			

**SA CATEGORY I ILS-SPECIAL AIRCREW & AIRCRAFT CERTIFICATION REQUIRED**

TDZ/CL Rwy 3  
REIL Rwy 21  
HIRL Rwy 3-21  
MIRL Rwy 17-35

NW-1, 22 FEB 2024 to 21 MAR 2024

NW-1, 22 FEB 2024 to 21 MAR 2024

LOC/DME I-SMR <b>111.3</b> Chan 50	APP CRS <b>032°</b>	Rwy Idg <b>10502</b> TDZE <b>3680</b> Apt Elev <b>3680</b>
--	------------------------	--

# ILS or LOC RWY 3

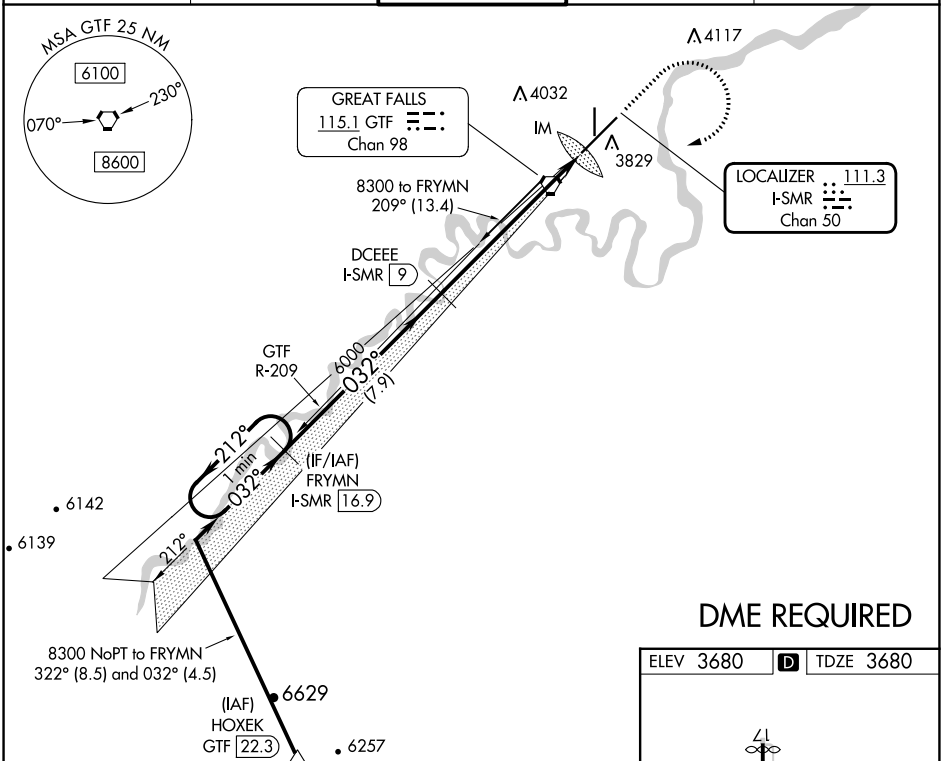
GREAT FALLS INTL (GTF)

**DME required.**

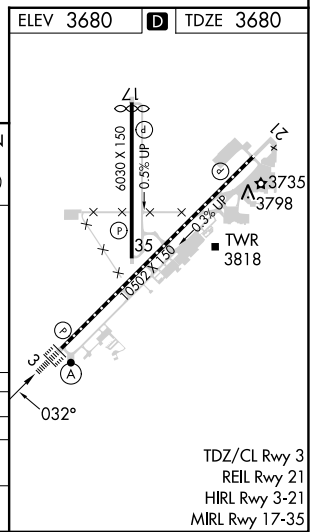
ALSF-2

MISSED APPROACH: Climb to 5000 then climbing right turn to 8300 direct GTF VORTAC then on GTF VORTAC R-209 to FRYMN/I-SMR 16.9 DME and hold.

ATIS <b>126.6 269.0</b>	GREAT FALLS APP CON <b>128.6 379.175</b>	GREAT FALLS TOWER <b>118.7 282.2</b>	GND CON <b>121.7 348.6</b>	CLNC DEL <b>121.7 348.6</b>
----------------------------	---	---	-------------------------------	--------------------------------



## DME REQUIRED



VGSI and ILS glidepath not coincident (VGSI Angle 3.00/TCH 70).

One Minute Holding Pattern

FRYMN I-SMR 16.9

8300  $\xrightarrow{032^\circ}$  6000  $\xrightarrow{032^\circ}$  3000

GS 3.00° TCH 54

DCEEE I-SMR 9

\*I-SMR 3.2

I-SMR 1.9

IM

Use I-SMR DME when on the localizer course.

\*LOC only

CATEGORY	A	B	C	D
S-ILS 3		3880/18	200 (200-½)	
S-LOC 3	4140/24	460 (500-½)	4140/45	460 (500-¾)
<b>C</b> CIRCLING	4140-1	460 (500-1)	4340-1¾ 660 (700-1¾)	4420-2¼ 740 (800-2¼)

TDZ/CL Rwy 3  
REIL Rwy 21  
HIRL Rwy 3-21  
MIRL Rwy 17-35

NW-1, 22 FEB 2024 to 21 MAR 2024

NW-1, 22 FEB 2024 to 21 MAR 2024

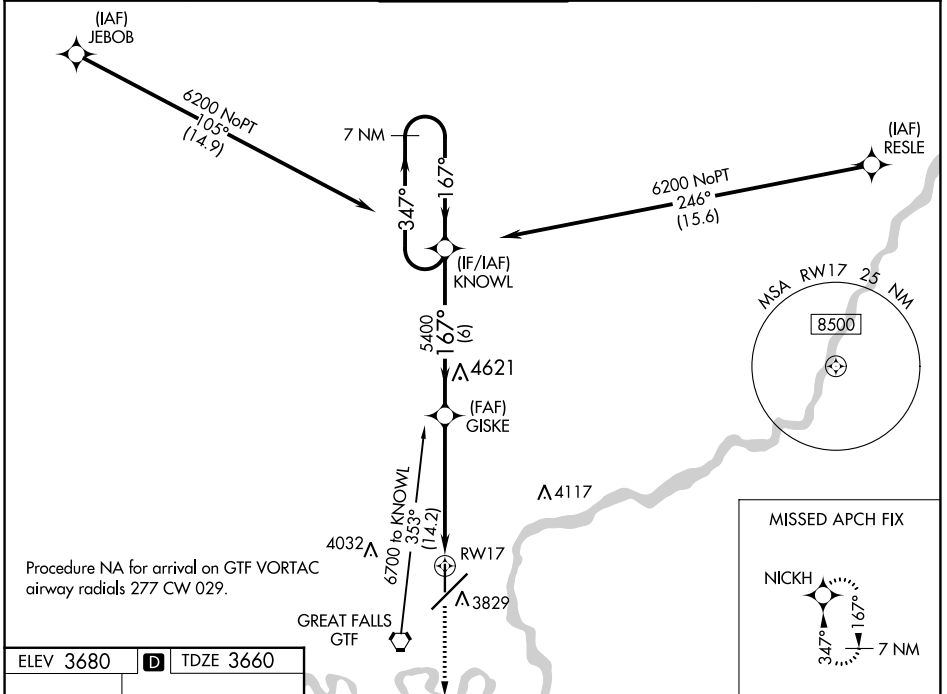
WAAS CH <b>49240</b> <b>W17A</b>	APP CRS <b>167°</b>	Rwy Idg TDZE Apt Elev	<b>5800</b> <b>3660</b> <b>3680</b>
--	------------------------	-----------------------------	---

# RNAV (GPS) RWY 17

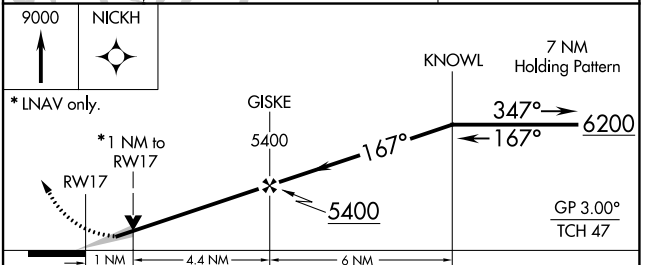
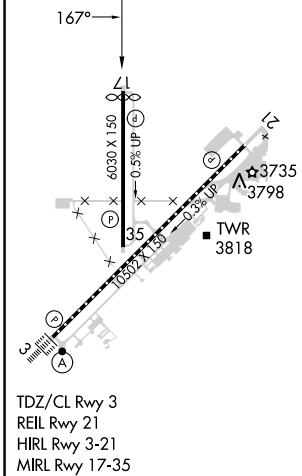
GREAT FALLS INTL (GTF)

RNP APCH - GPS.	MISSED APPROACH: Climb to 9000 direct NICKH and hold, continue climb-in-hold to 9000.
▼ For uncompensated Baro-VNAV systems, LNAV/VNAV NA below -26°C or above 52°C.	

ATIS <b>126.6 269.0</b>	GREAT FALLS APP CON <b>128.6 379.175</b>	GREAT FALLS TOWER <b>118.7 282.2</b>	GND CON <b>121.7 348.6</b>	CLNC DEL <b>121.7 348.6</b>
----------------------------	---	---	-------------------------------	--------------------------------



ELEV 3680	<b>D</b>	TDZE 3660
-----------	----------	-----------



CATEGORY	A	B	C	D
LPV DA		3910-3/4	250 (300-3/4)	
LNAV/ VNAV DA		3910-3/4	250 (300-3/4)	
LNAV MDA		4000-1	340 (400-1)	
<b>C</b> CIRCLING	4140-1	460 (500-1)	4340-1 3/4 660 (700-1 3/4)	4420-2 1/4 740 (800-2 1/4)

WAAS CH <b>82240</b> <b>W35A</b>	APP CRS <b>347°</b>	Rwy Idg TDZE Apt Elev	<b>5400</b> <b>3668</b> <b>3680</b>
--	------------------------	-----------------------------	---

# RNAV (GPS) RWY 35

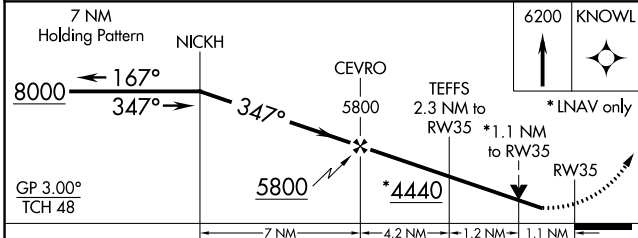
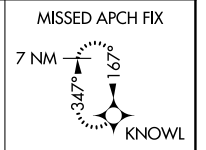
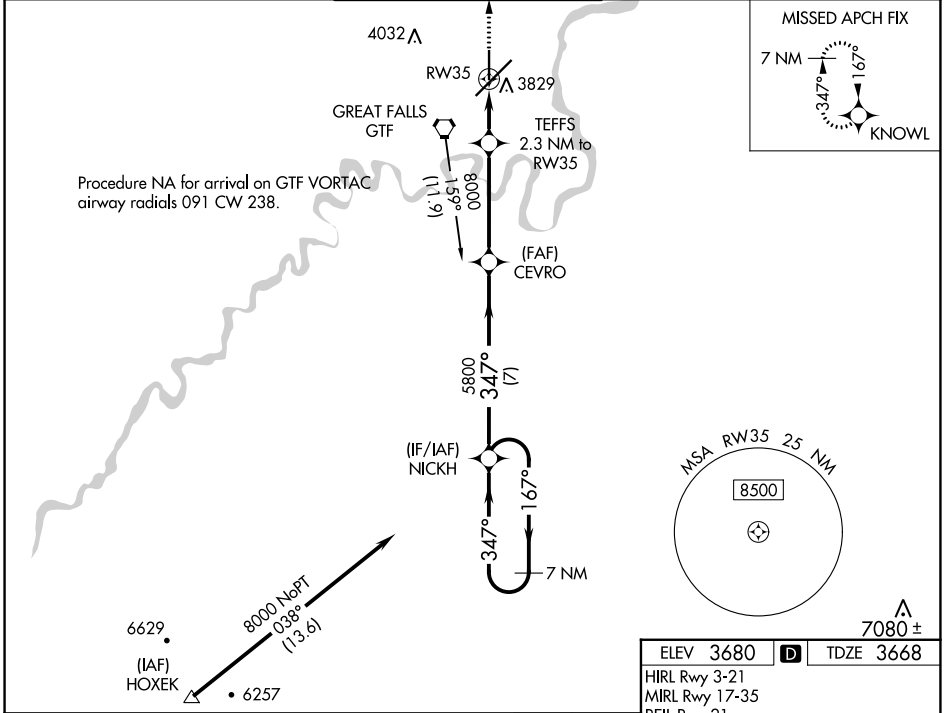
GREAT FALLS INTL (GTF)

RNP APCH - GPS.

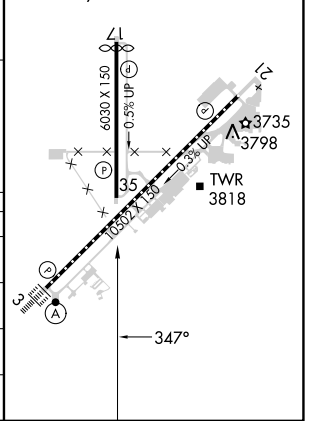
**⚠** For uncompensated Baro-VNAV systems, LNAV/VNAV NA below -26°C or above 52°C. Rwy 35 helicopter visibility reduction below ¼ SM NA.

MISSED APPROACH: Climb to 6200 direct KNOWL and hold.

ATIS <b>126.6 269.0</b>	GREAT FALLS APP CON <b>128.6 379.175</b>	GREAT FALLS TOWER <b>118.7 282.2</b>	GND CON <b>121.7 348.6</b>	CLNC DEL <b>121.7 348.6</b>
----------------------------	---	---	-------------------------------	--------------------------------



ELEV 3680	<b>D</b>	TDZE 3668
HIRL Rwy 3-21		
MIRL Rwy 17-35		
REIL Rwy 21		
TDZ/CL Rwy 3		



CATEGORY	A	B	C	D
LPV DA		3918-¾	250 (300-¾)	
LNAV/VNAV DA		4086-1½	418 (500-1½)	
LNAV MDA	4080-1	412 (400-1)	4080-1½	412 (400-1½)
<b>C</b> CIRCLING	4140-1	460 (500-1)	4340-1¾ 660 (700-1¾)	4420-2¼ 740 (800-2¼)

NW-1, 22 FEB 2024 to 21 MAR 2024

NW-1, 22 FEB 2024 to 21 MAR 2024

APP CRS **212°**  
 Rwy Idg **10502**  
 TDZE **3669**  
 Apt Elev **3680**

# RNAV (RNP) Z RWY 21

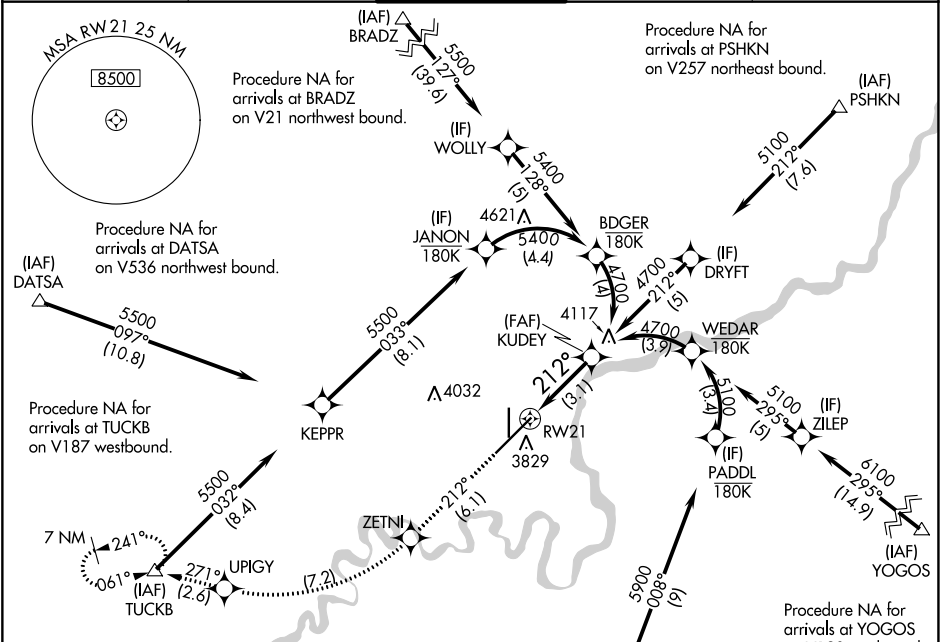
GREAT FALLS INTL (GTF')

RNP AR APCH - GPS.

For uncompensated Baro-VNAV systems, procedure NA below -24°C or above 54°C.

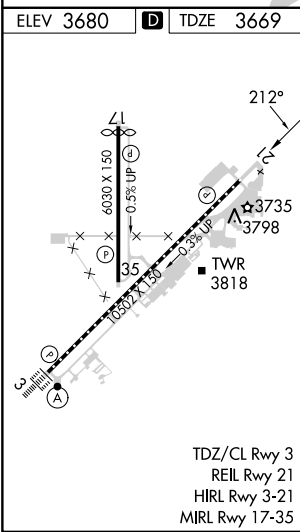
MISSED APPROACH: Climb to 8000 on track 212° to ZETNI, right turn to UPIGY and on track 271° to TUCKB and hold, continue climb-in-hold to 8000.

ATIS <b>126.6 269.0</b>	GREAT FALLS APP CON <b>128.6 379.175</b>	GREAT FALLS TOWER <b>118.7 282.2</b>	GND CON <b>121.7 348.6</b>	CLNC DEL <b>121.7 348.6</b>
----------------------------	---	---	-------------------------------	--------------------------------



NW-1, 22 FEB 2024 to 21 MAR 2024

NW-1, 22 FEB 2024 to 21 MAR 2024



Procedure NA for arrivals at URELE on V536 southbound.

8000	ZETNI	UPIGY	TUCKB	KUDEY
tr 212°	☀	☀	△	4700

VGSI and RNAV glidepath not coincident (VGSI Angle 3.00/TCH 75).

See planview for multiple IF locations.

3.1 NM

CATEGORY	A	B	C	D
RNP 0.10 DA		3942/45	273 (300-7%)	
RNP 0.30 DA		3992/50	323 (400-1)	

GP 3.00°  
TCH 59

## AUTHORIZATION REQUIRED

APP CRS	Rwy Idg	<b>10502</b>
<b>032°</b>	TDZE	<b>3680</b>
	Apt Elev	<b>3680</b>

# RNAV (RNP) Z RWY 3

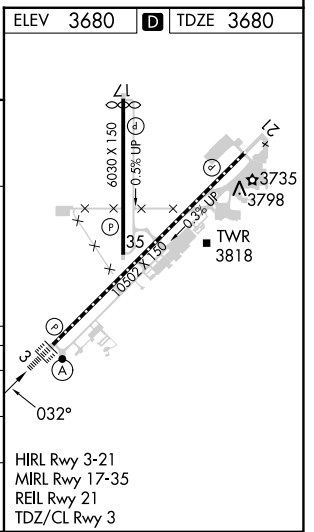
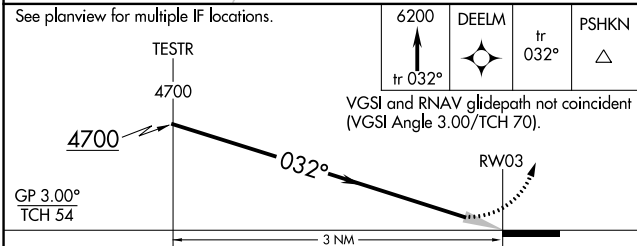
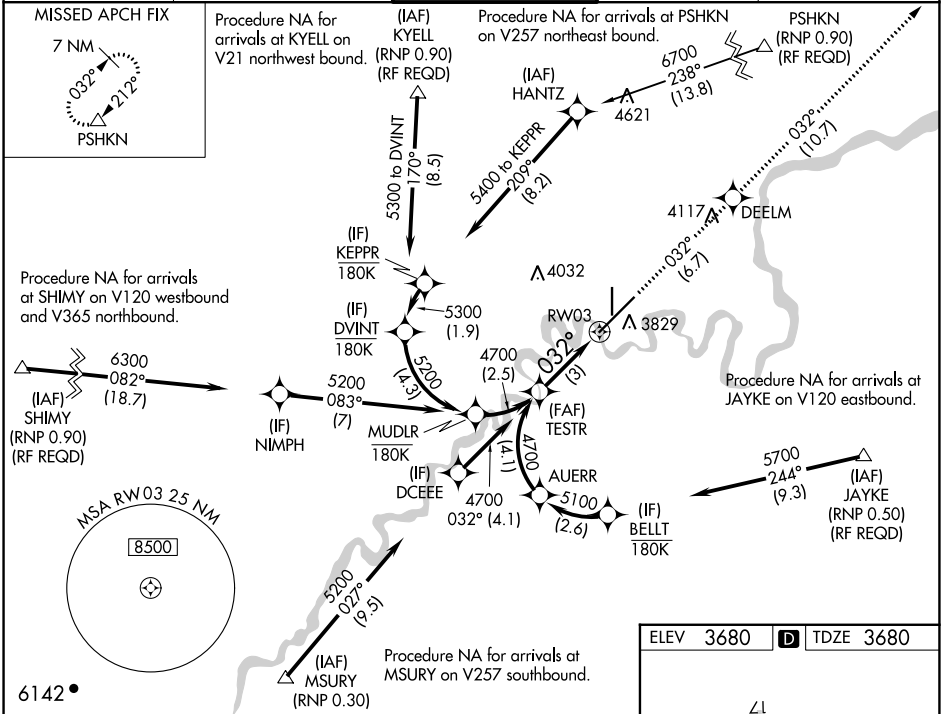
GREAT FALLS INTL (GTF)

**GPS required.** For uncompensated Baro-VNAV systems, procedure NA below -22°C or above 40°C. For inoperative ALS increase RNP 0.10 DA visibility all Cats to RVR 4500, increase RNP 0.30 DA visibility all Cats to RVR 6000.

**ALS-F-2**

**MISSED APPROACH:** Climb to 6200 on track 032° to DEELM and on track 032° to PSHKN and hold.

ATIS <b>126.6 269.0</b>	GREAT FALLS APP CON <b>128.6 379.175</b>	GREAT FALLS TOWER <b>118.7 282.2</b>	GND CON <b>121.7 348.6</b>	CLNC DEL <b>121.7 348.6</b>
----------------------------	---	---	-------------------------------	--------------------------------



CATEGORY	A	B	C	D
RNP 0.10 DA		3990/24	310 (400-½)	
RNP 0.30 DA		4079/45	399 (400-¾)	

**AUTHORIZATION REQUIRED**

NW-1, 22 FEB 2024 to 21 MAR 2024

NW-1, 22 FEB 2024 to 21 MAR 2024

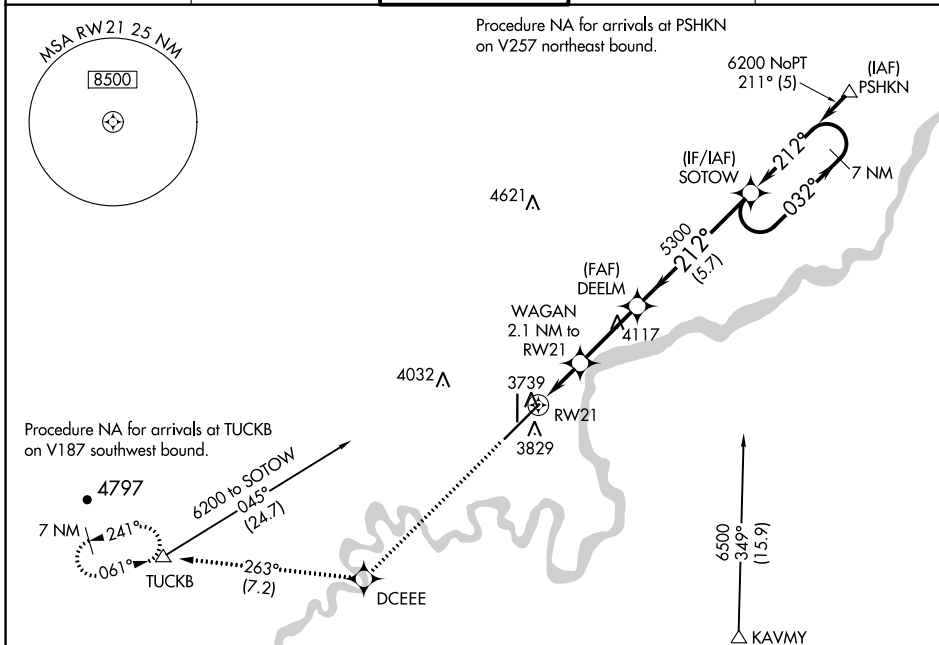
WAAS CH <b>90221</b> <b>W21A</b>	APP CRS <b>212°</b>	Rwy Idg <b>10502</b> TDZE <b>3669</b> Apt Elev <b>3680</b>
--	------------------------	--

# RNAV (GPS) Y RWY 21

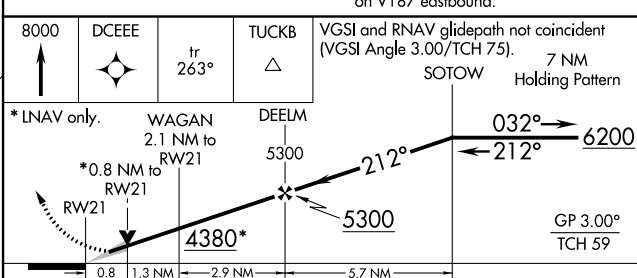
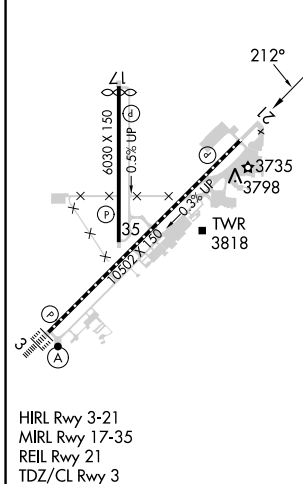
GREAT FALLS INTL (GTF)

RNP APCH - GPS.	MISSED APPROACH: Climb to 8000 direct DCEEE and on track 263° to TUCKB and hold, continue climb-in-hold to 8000.
<p>▼ For uncompensated Baro-VNAV systems, LNAV/VNAV NA below -24°C or above 49°C.</p> <p>▲</p>	

ATIS <b>126.6 269.0</b>	GREAT FALLS APP CON <b>128.6 379.175</b>	GREAT FALLS TOWER <b>118.7 282.2</b>	GND CON <b>121.7 348.6</b>	CLNC DEL <b>121.7 348.6</b>
----------------------------	---	---	-------------------------------	--------------------------------



ELEV 3680	<b>D</b>	TDZE 3669
-----------	----------	-----------



CATEGORY	A	B	C	D
LPV DA		3869/40	200 (200-3/4)	
LNAV/ VNAV DA		3927/45	258 (300-7/8)	
LNAV MDA	4000/55	331 (400-1)	4000/50	331 (400-1)
<b>C</b> CIRCLING	4140-1	460 (500-1)	4340-1 3/4 660 (700-1 3/4)	4420-2 1/4 740 (800-2 1/4)

NW-1, 22 FEB 2024 to 21 MAR 2024

NW-1, 22 FEB 2024 to 21 MAR 2024



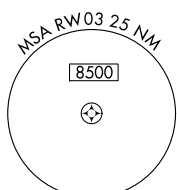
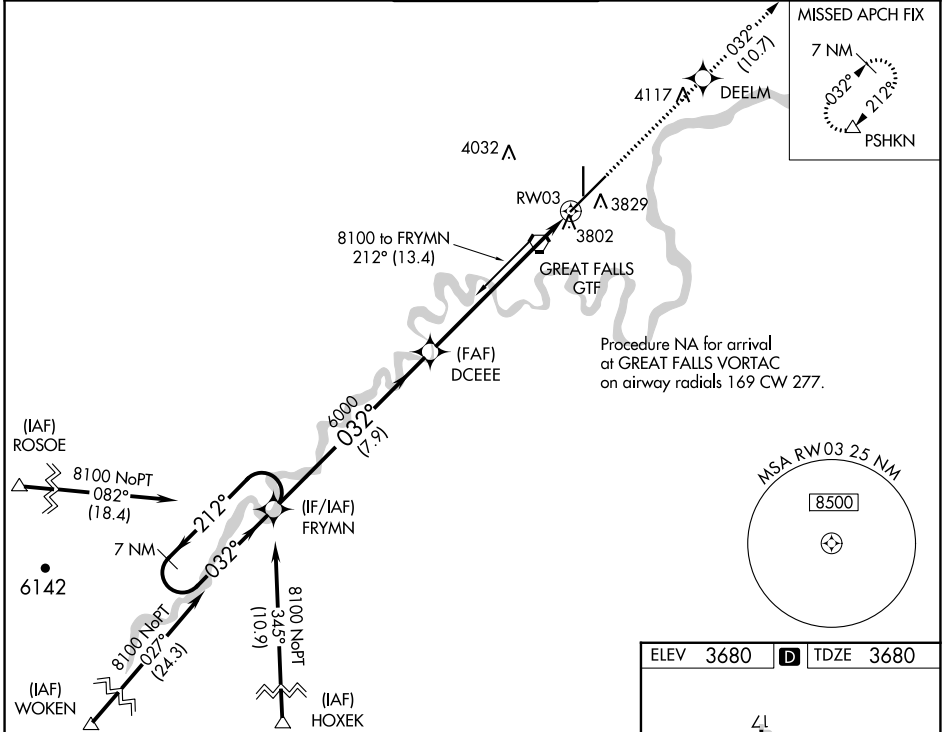
WAAS CH <b>70602</b> <b>W03A</b>	APP CRS <b>032°</b>	Rwy Idg <b>10502</b> TDZE <b>3680</b> Apt Elev <b>3680</b>
--	------------------------	--

# RNAV (GPS) Y RWY 3

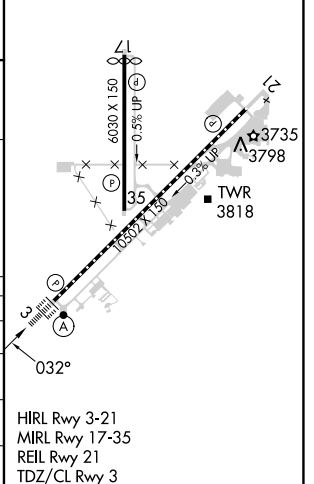
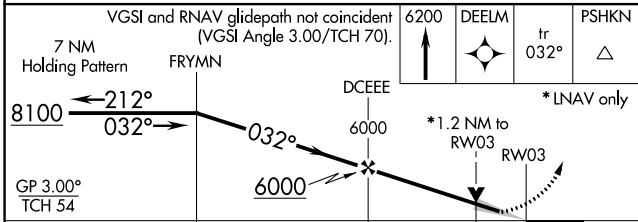
GREAT FALLS INTL (GTF)

RNP APCH - GPS.	ALSF-2	MISSED APPROACH: Climb to 6200 direct DEELM and on track 032° to PSHKN and hold.
<p>▼ For uncompensated Baro-VNAV systems, LNAV/VNAV NA below -25°C or above 50°C. For inop ALS, increase LNAV/VNAV all Cats visibility to RVR 4500.</p>		

ATIS <b>126.6 269.0</b>	GREAT FALLS APP CON <b>128.6 379.175</b>	GREAT FALLS TOWER <b>118.7 282.2</b>	GND CON <b>121.7 348.6</b>	CLNC DEL <b>121.7 348.6</b>
----------------------------	---	---	-------------------------------	--------------------------------



ELEV 3680	<b>D</b> TDZE 3680
-----------	--------------------



CATEGORY	A	B	C	D
LPV DA	3880/18		200 (200-½)	
LNAV/VNAV DA	3963/24		283 (300-½)	
LNAV MDA	4140/24 460 (500-½)		4140/45 460 (500-¾)	
<b>C</b> CIRCLING	4140-1 460 (500-1)		4340-1¾ 660 (700-1¾) 4420-2¼ 740 (800-2¼)	

NW-1, 22 FEB 2024 to 21 MAR 2024

NW-1, 22 FEB 2024 to 21 MAR 2024

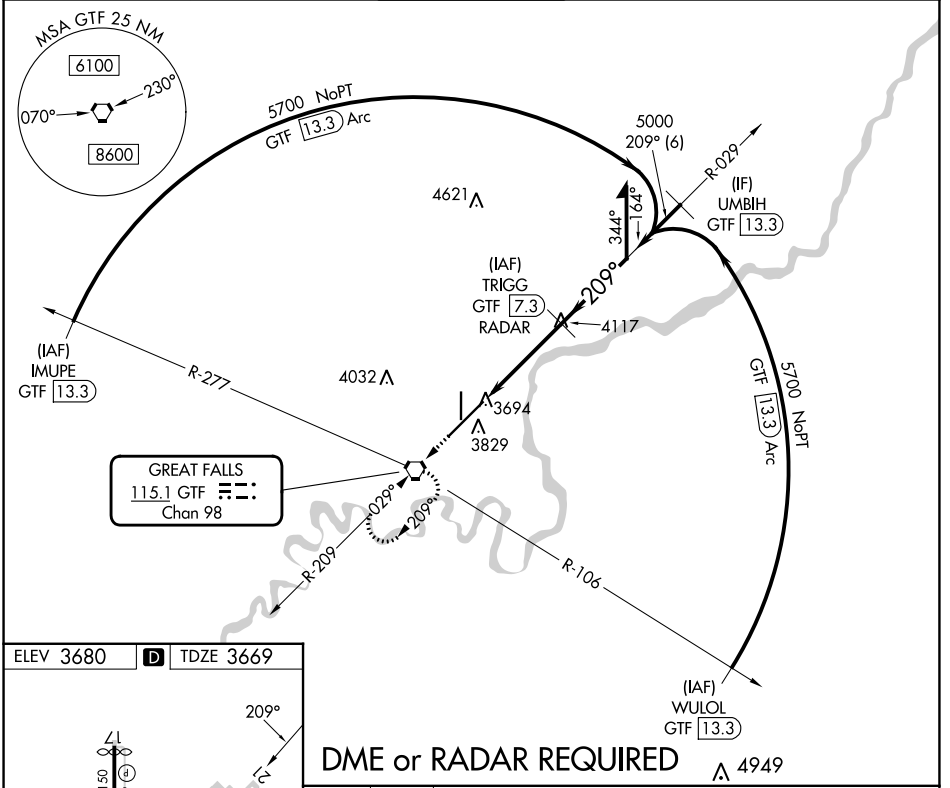
VORTAC GTF <b>115.1</b> Chan <b>98</b>	APP CRS <b>209°</b>	Rwy Idg <b>10502</b> TDZE <b>3669</b> Apt Elev <b>3680</b>
--	------------------------	--

# VOR RWY 21

GREAT FALLS INTL (GTF)

DME or RADAR required.		MISSED APPROACH: Climb to 8000 direct GTF VORTAC, continue climb-in-hold to 8000.		
------------------------	--	---	--	--

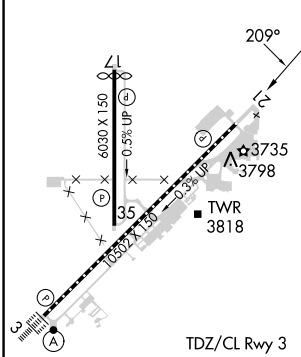
ATIS <b>126.6 269.0</b>	GREAT FALLS APP CON <b>128.6 379.175</b>	GREAT FALLS TOWER <b>118.7 282.2</b>	GND CON <b>121.7 348.6</b>	CLNC DEL <b>121.7 348.6</b>
----------------------------	---	---	-------------------------------	--------------------------------



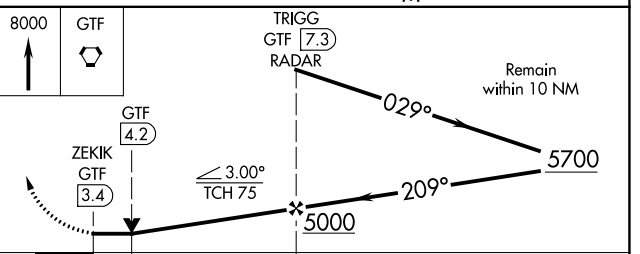
NW-1, 22 FEB 2024 to 21 MAR 2024

NW-1, 22 FEB 2024 to 21 MAR 2024

ELEV 3680	<b>D</b>	TDZE 3669
-----------	----------	-----------



## DME or RADAR REQUIRED



TDZ/CL Rwy 3 REIL Rwy 21 HIRL Rwy 3-21 MIRL Rwy 17-35	FAF to MAP 4 NM	CATEGORY	A	B	C	D
		S-21	4000/55 331 (400-1)			
		<input checked="" type="checkbox"/> CIRCLING	4140-1	460 (500-1)	4340-1¾ 660 (700-1¾)	4420-2¼ 740 (800-2¼)

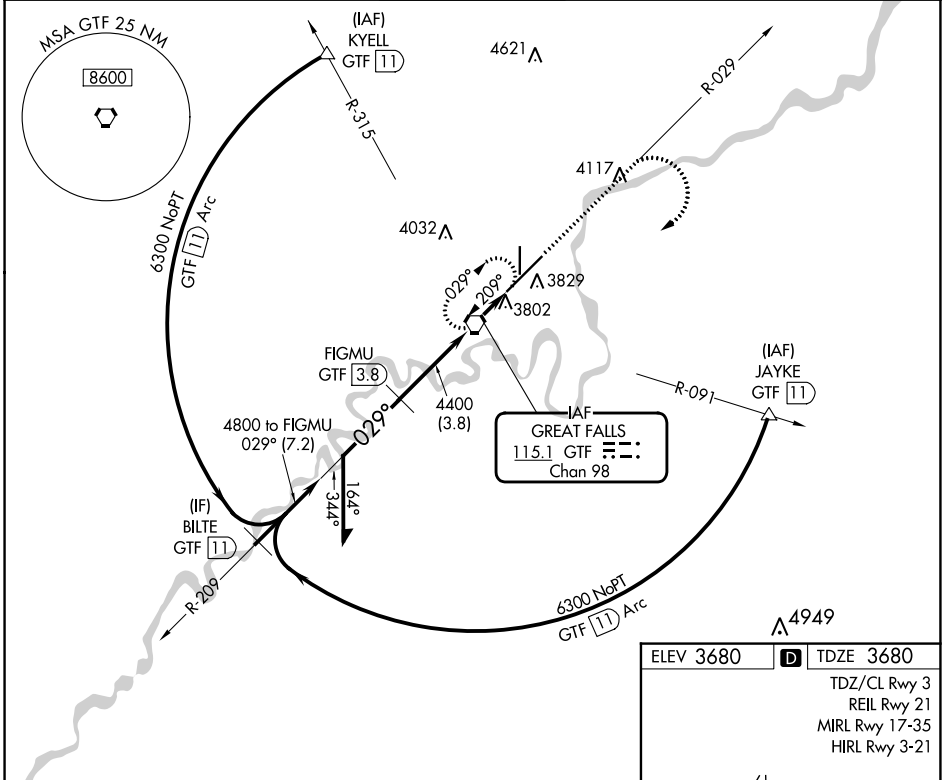
VORTAC GTF <b>115.1</b> Chan <b>98</b>	APP CRS <b>029°</b>	Rwy Idg <b>10502</b> TDZE <b>3680</b> Apt Elev <b>3680</b>
--	------------------------	--

# VOR RWY 3

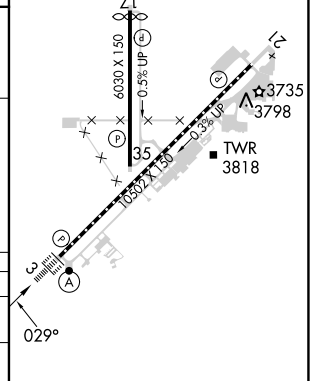
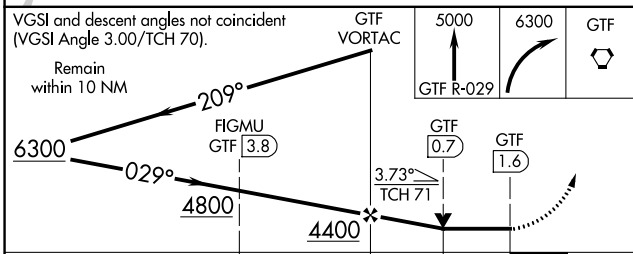
GREAT FALLS INTL (GTF)

DME required. ▼ For inoperative ALS, increase Cat C visibility to RVR 5500.	ALSF-2 ▲	MISSED APPROACH: Climb to 5000 on GTF VORTAC R-029 then climbing right turn to 6300 direct GTF VORTAC and hold, continue climb-in-hold to 6300.
--	-------------	---

ATIS <b>126.6 269.0</b>	GREAT FALLS APP CON <b>128.6 379.175</b>	GREAT FALLS TOWER <b>118.7 282.2</b>	GND CON <b>121.7 348.6</b>	CLNC DEL <b>121.7 348.6</b>
----------------------------	---	---	-------------------------------	--------------------------------



ELEV 3680	TDZE 3680
TDZ/CL Rwy 3 REIL Rwy 21 MIRL Rwy 17-35 HIRL Rwy 3-21	



CATEGORY	A	B	C	D
S-3	4060/24	380 (400-½)		NA
CIRCLING	4140-1	460 (500-1)	4320-1¼ 640 (700-1¼)	NA

NW-1, 22 FEB 2024 to 21 MAR 2024

NW-1, 22 FEB 2024 to 21 MAR 2024