

WAAS CH 69527 W01A	APP CRS 007°	Rwy Idg TDZE Apt Elev	4204 2694 2694
---------------------------------	------------------------	-----------------------------	---

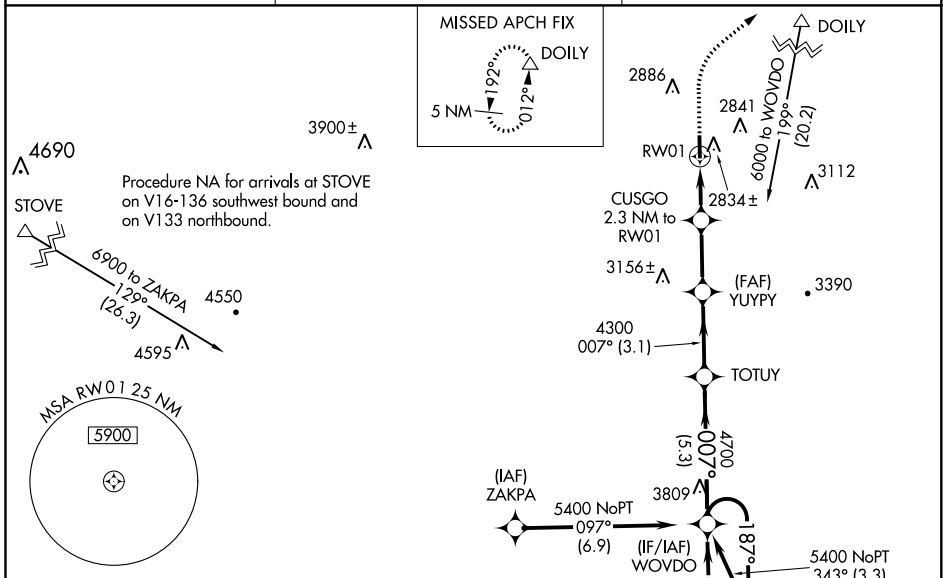
RNAV (GPS) RWY 1

TWIN COUNTY (HLX)

⚠ Baro-VNAV NA when using Dublin altimeter setting. For uncompensated Baro-VNAV systems, LNAV/VNAV NA below -20°C (-4°F) or above 54°C (130°F). DME/DME RNP-0.3 NA. Visibility reduction by helicopters NA. VDP NA with Dublin altimeter setting. When local altimeter setting not received, use Dublin altimeter setting and increase all DA 137 feet and all MDA 140 feet, increase LPV all Cats visibility, LNAV/VNAV all Cats visibility and LNAV Cats C/D visibility ½ mile, and increase Circling Cats C/D visibility ¼ mile.

MISSED APPROACH: Climb to 3200 then climbing right turn to 5100 direct DOILY and hold, continue climb-in-hold to 5100.

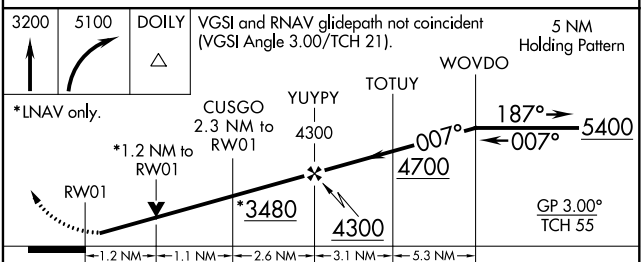
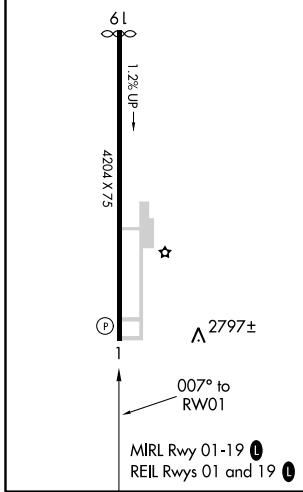
AWOS-3 118.375	ROANOKE APP CON 126.0 339.8	UNICOM 122.8 (CTAF) 📻
--------------------------	---------------------------------------	--



NE-3, 19 MAY 2022 to 16 JUN 2022

NE-3, 19 MAY 2022 to 16 JUN 2022

ELEV 2694	TDZE 2694
-----------	-----------



CATEGORY	A	B	C	D
LPV DA		2965-1	271 (300-1)	
LNAV/VNAV DA		3016-1	322 (400-1)	
LNAV MDA	3100-1	406 (500-1)	3100-1½	406 (500-1½)
CIRCLING	3200-1	506 (600-1)	3200-1½ 506 (600-1½)	3260-2 566 (600-2)

WAAS CH 58027 W19A	APP CRS 187°	Rwy Idg TDZE Apt Elev	4154 2687 2694
--	------------------------	-----------------------------	---

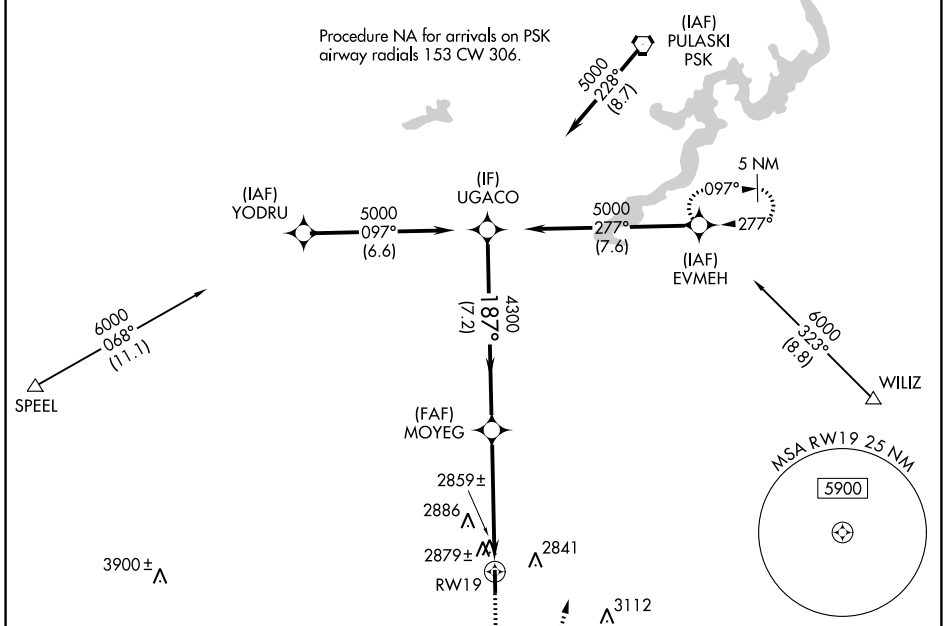
RNAV (GPS) RWY 19

TWIN COUNTY (HLX)

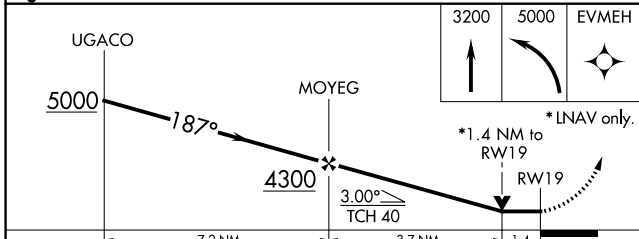
⚠ DME/DME RNP-0.3 NA. Visibility reduction by helicopters NA. VDP NA with Dublin altimeter setting. When local altimeter setting not received, use Dublin altimeter setting and increase all MDA 140 feet, increase LP Cats C/D visibility and LNAV Cats C/D visibility 3/8 mile, increase Circling Cats C/D visibility 1/4 mile.

MISSED APPROACH: Climb to 3200 then climbing left turn to 5000 direct EVMEH and hold.

AWOS-3 118.375	ROANOKE APP CON 126.0 339.8	UNICOM 122.8 (CTAF) 0
--------------------------	---------------------------------------	---------------------------------



ELEV 2694	TDZE 2687
MRL Rwy 01-19 0 REIL Rwy 01 and 19 0	



CATEGORY	A	B	C	D
LP MDA	3120-1	433 (500-1)	3120-1 3/8	433 (500-1 3/8)
LNAV MDA	3140-1	453 (500-1)	3140-1 3/8	453 (500-1 3/8)
CIRCLING	3200-1	506 (600-1)	3200-1 1/2	3260-2
			506 (600-1 1/2)	566 (600-2)

NE-3, 19 MAY 2022 to 16 JUN 2022

NE-3, 19 MAY 2022 to 16 JUN 2022