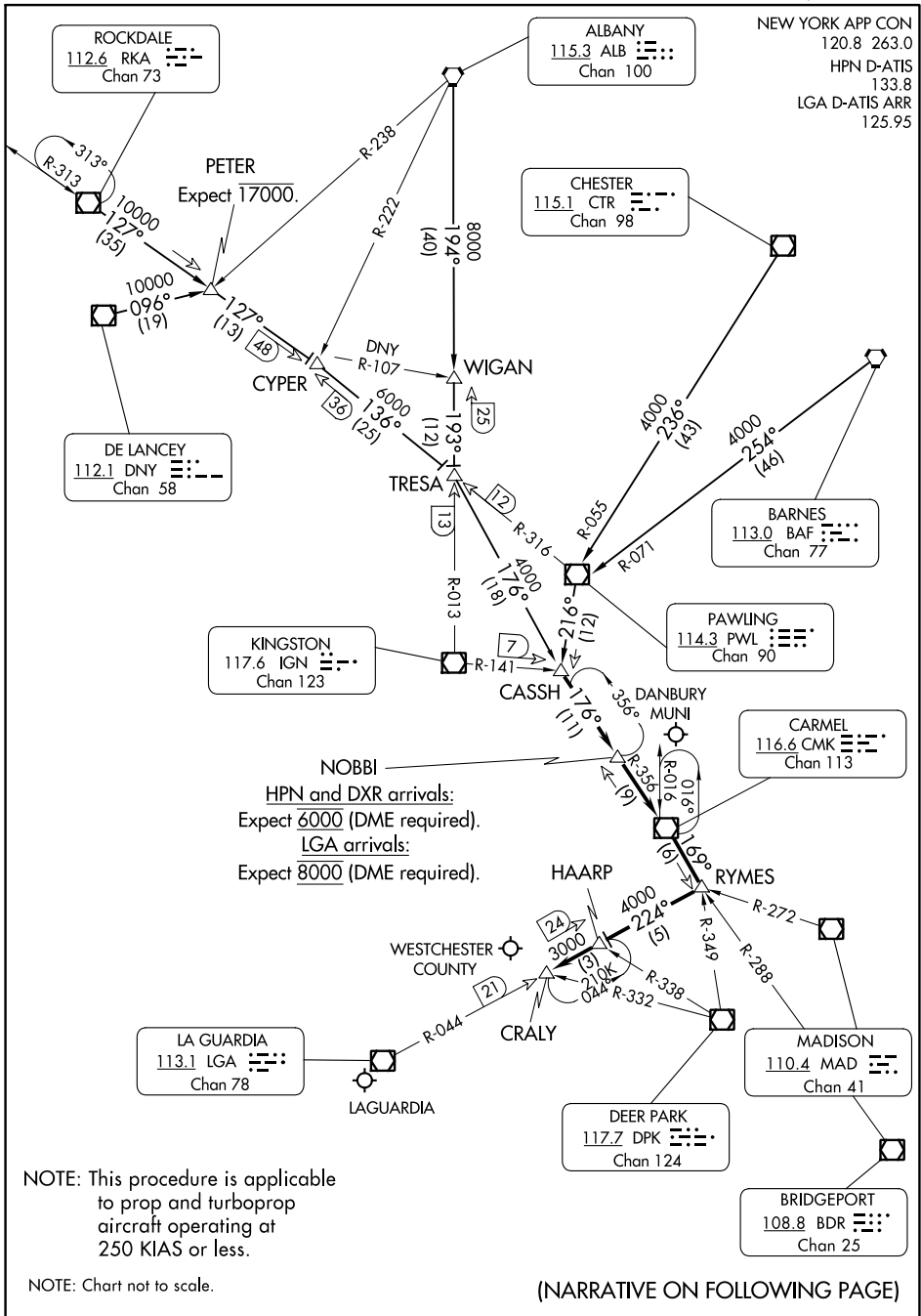


# NOBBI FIVE ARRIVAL

NEW YORK, NEW YORK

NEW YORK APP CON  
 120.8 263.0  
 HPN D-ATIS  
 133.8  
 LGA D-ATIS ARR  
 125.95



NE-2, 22 FEB 2024 to 21 MAR 2024

NE-2, 22 FEB 2024 to 21 MAR 2024

(NARRATIVE ON FOLLOWING PAGE)

NEW YORK, NEW YORK

ARRIVAL ROUTE DESCRIPTION

ALBANY TRANSITION (ALB.NOBBI5): From over ALB VORTAC via ALB R-194 to WIGAN INT, then via IGN R-013 to TRESA INT, then via CMK R-356 to CASSH INT. Thence. . . .

BARNES TRANSITION (BAF.NOBBI5): From over BAF VORTAC via BAF R-254 and PWL R-071 to PWL VOR/DME, then via PWL R-216 to CASSH INT. Thence. . . .

CHESTER TRANSITION (CTR.NOBBI5): From over CTR VOR/DME via CTR R-236 and PWL R-055 to PWL VOR/DME, then via PWL R-216 to CASSH INT. Thence. . . .

DE LANCEY TRANSITION (DNY.NOBBI5): From over DNY VOR/DME via DNY R-096 to PETER INT, then via RKA R-127 to CYPER INT, then via PWL R-316 to TRESA INT, then via CMK R-356 to CASSH INT. Thence. . . .

ROCKDALE TRANSITION (RKA.NOBBI5): From over RKA VOR/DME via RKA R-127 to CYPER INT, then via PWL R-316 to TRESA INT, then via CMK R-356 to CASSH INT. Thence. . . .

. . . .From over CASSH INT via CMK R-356 to CMK VOR/DME, then via CMK R-169 to RYMES INT, then via LGA VOR/DME R-044 to HAARP INT to CRALY INT. Expect radar vectors to final approach course.

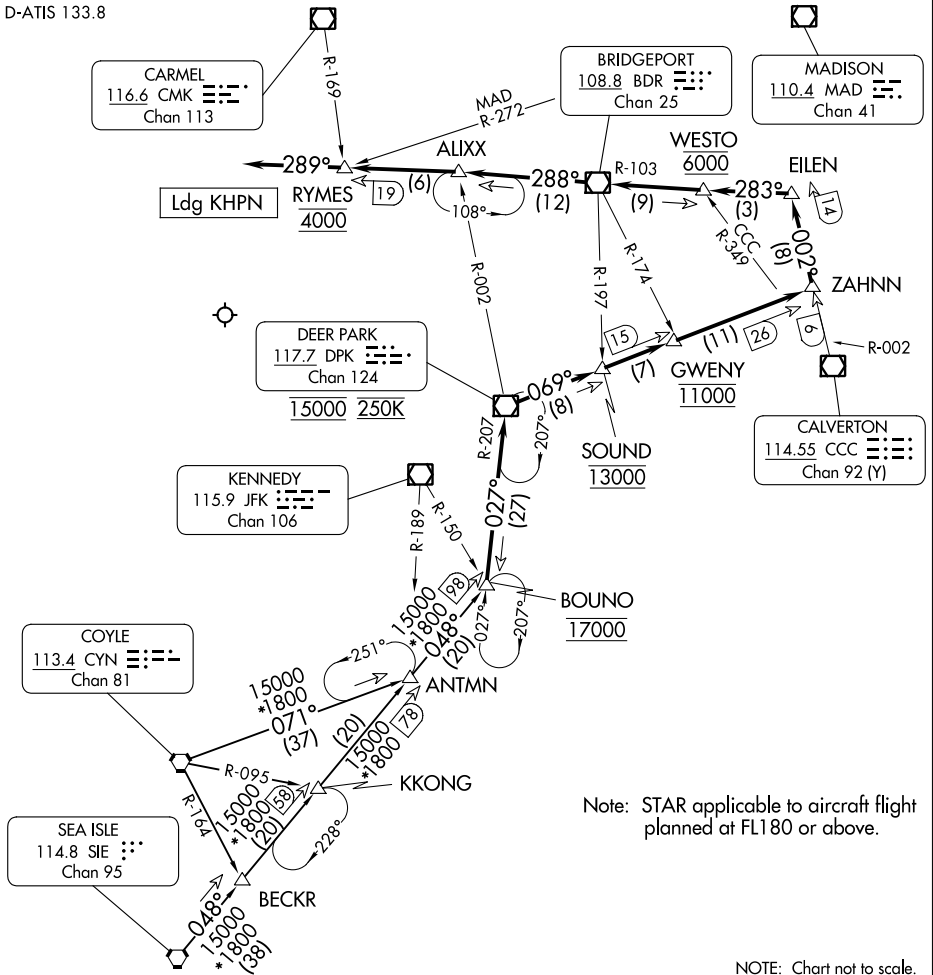
NE-2, 22 FEB 2024 to 21 MAR 2024

NE-2, 22 FEB 2024 to 21 MAR 2024

# BOUNO FIVE ARRIVAL

RADAR required.

NEW YORK APP CON  
124.075 133.1 343.75  
D-ATIS 133.8



Note: STAR applicable to aircraft flight planned at FL180 or above.

NOTE: Chart not to scale.

## ARRIVAL ROUTE DESCRIPTION

**COYLE TRANSITION (CYN.BOUNO5):** From over CYN VORTAC on CYN R-071

to ANTMN, then on SIE R-048 to BOUNO. Thence . . .

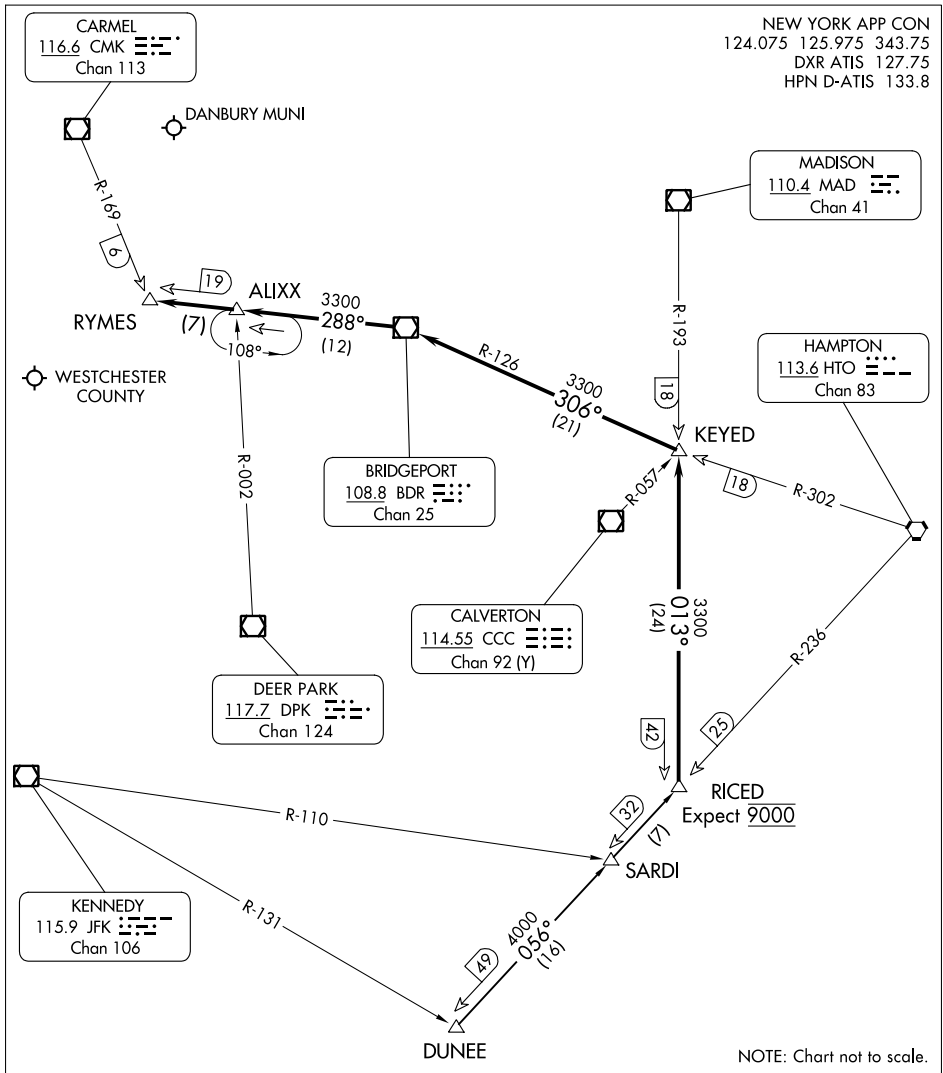
**SEA ISLE TRANSITION (SIE.BOUNO5):** From over SIE VORTAC on SIE R-048 to BOUNO. Thence . . .

. . . from BOUNO on DPK VOR/DME R-207 to cross DPK at 15000 and at 250K, then on DPK R-069 to cross SOUND at 13000, then on DPK R-069 to cross GWENY at 11000, then on DPK R-069 to ZAHNN, then on CCC VOR/DME R-002 to EILEN, then on BDR VOR/DME R-103 to cross WESTO at 6000, then BDR R-103 to BDR, then on BDR R-288 to ALIXX, then on BDR R-288 to cross RYMES at 4000, then on heading 289°. Expect radar vectors to final approach course.

# BOUNO FIVE ARRIVAL

# RICED FOUR ARRIVAL

WHITE PLAINS, NEW YORK



NE-2, 22 FEB 2024 to 21 MAR 2024

NE-2, 22 FEB 2024 to 21 MAR 2024

## ARRIVAL ROUTE DESCRIPTION

**DUNEE TRANSITION (DUNEE.RICED4):** From over DUNEE INT via HTO R-236 to RICED INT, thence. . . .

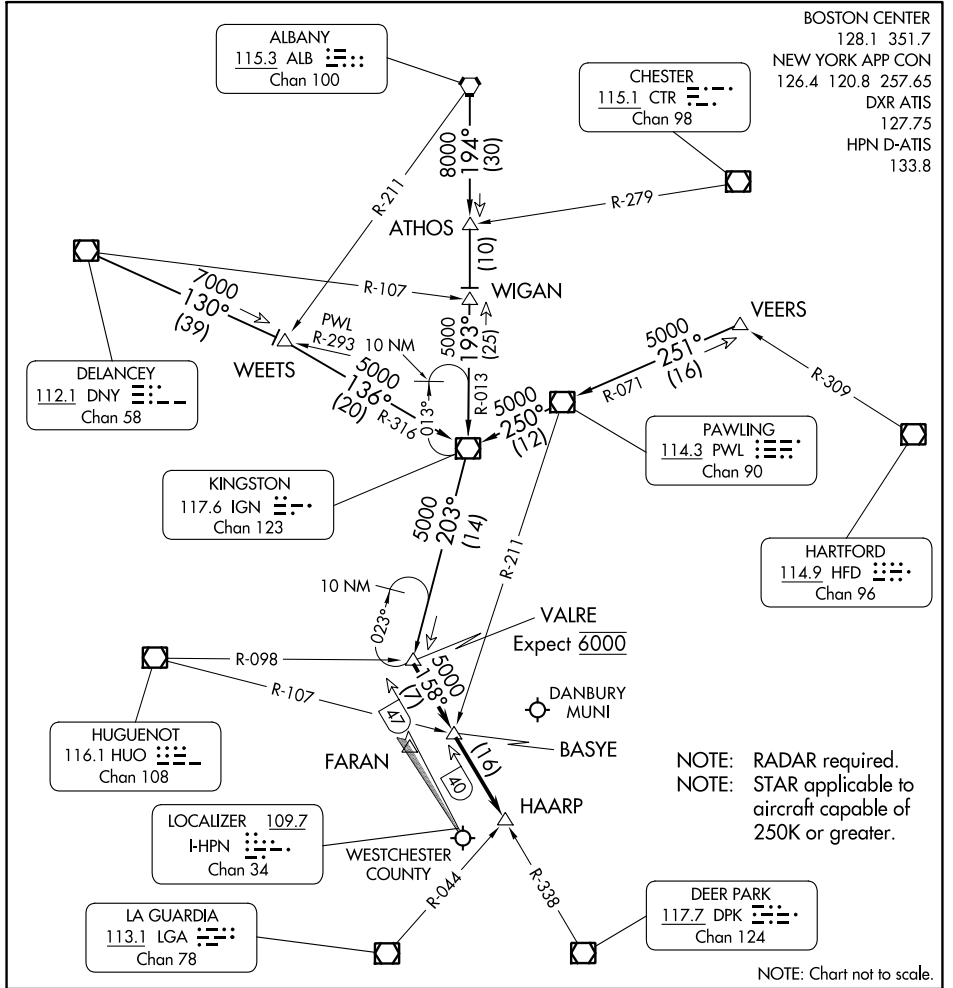
. . . .from over RICED INT via MAD R-193 to intercept BDR R-126 to BDR VOR/DME then via BDR R-288 to RYMES INT. Expect RADAR vectors to final approach course.

# RICED FOUR ARRIVAL

WHITE PLAINS, NEW YORK

# VALRE FIVE ARRIVAL

WHITE PLAINS, NEW YORK



NE-2, 22 FEB 2024 to 21 MAR 2024

NE-2, 22 FEB 2024 to 21 MAR 2024

## ARRIVAL ROUTE DESCRIPTION

**ALBANY TRANSITION (ALB.VALRE5):** From over ALB VORTAC on ALB R-194 to WIGAN INT, then on IGN R-013 to IGN VOR/DME, then on IGN R-203 to VALRE INT. Thence. . . .

**DELANCEY TRANSITION (DNY.VALRE5):** From over DNY VOR/DME on DNY R-130 to WEETS INT, then on IGN R-316 to IGN VOR/DME, then on IGN R-203 to VALRE INT. Thence. . . .

**VEERS TRANSITION (VEERS.VALRE5):** From over VEERS INT on PWL R-071 to PWL VOR/DME, then on PWL R-250 to IGN VOR/DME, then on IGN R-203 to VALRE INT. Thence. . . .

. . . .from over VALRE INT on DPK R-338 to BASYE INT, then to HAARP INT. Expect RADAR vectors to final approach course prior to HAARP INT.

# VALRE FIVE ARRIVAL

WHITE PLAINS, NEW YORK