

APP CRS	Rwy Idg	3000
096°	TDZE	8
	Apt Elev	9

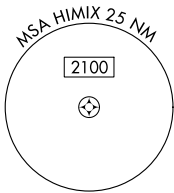
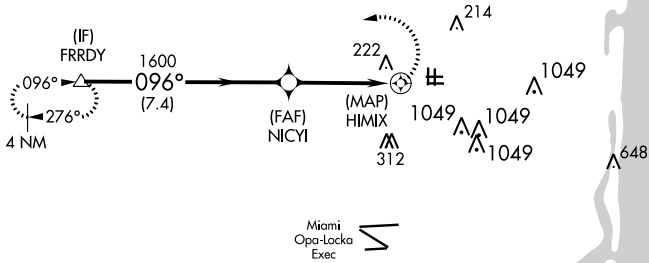
RNAV (GPS) RWY 10R

NORTH PERRY (HWO)

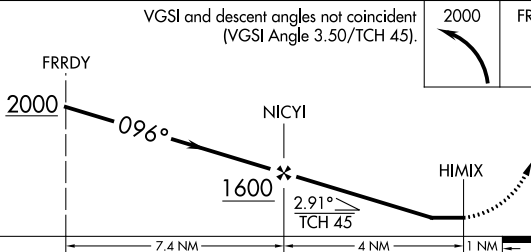
RNP APCH.	<p>▼ Rwy 10R helicopter visibility reduction below 3/4 SM NA. Circling Rwy 1R, 10L, 19L, 28R NA at night. Circling NA for Cat C south of Rwy 10R-28L.</p>	MISSED APPROACH: Climbing left turn to 2000 direct FRRDY and hold.
-----------	---	--

ATIS 135.475	MIAMI APP CON 128.6 306.975	NORTH PERRY TOWER* 132.1 (CTAF) 254.3	GND CON 120.45 254.3	UNICOM 122.95
------------------------	---------------------------------------	--	--------------------------------	-------------------------

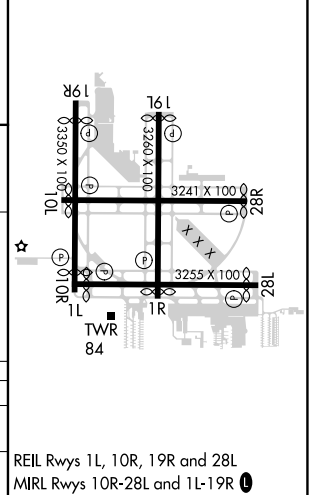
Procedure NA for arrivals at FRRDY on V157-511-599 northwest bound.



VGSI and descent angles not coincident (VGSI Angle 3.50/TCH 45).



ELEV 9	TDZE 8
--------	--------



CATEGORY	A	B	C	D
LNVA MDA	480-1 1/4	472 (500-1 1/4)	480-1 3/8 472 (500-1 3/8)	NA
CIRCLING	560-1 1/4	551 (600-1 1/4)	560-1 1/2 551 (600-1 1/2)	NA

REIL Rwy 1L, 10R, 19R and 28L
MIRL Rwy 10R-28L and 1L-19R

APP CRS	Rwy Idg	3180
269°	TDZE	9
	Apt Elev	9

RNAV (GPS) RWY 28R

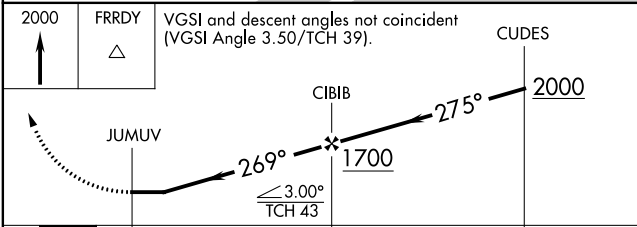
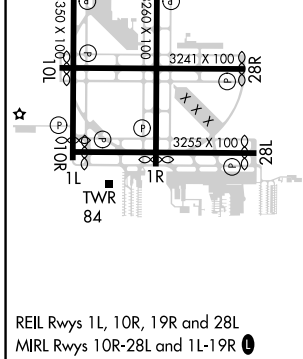
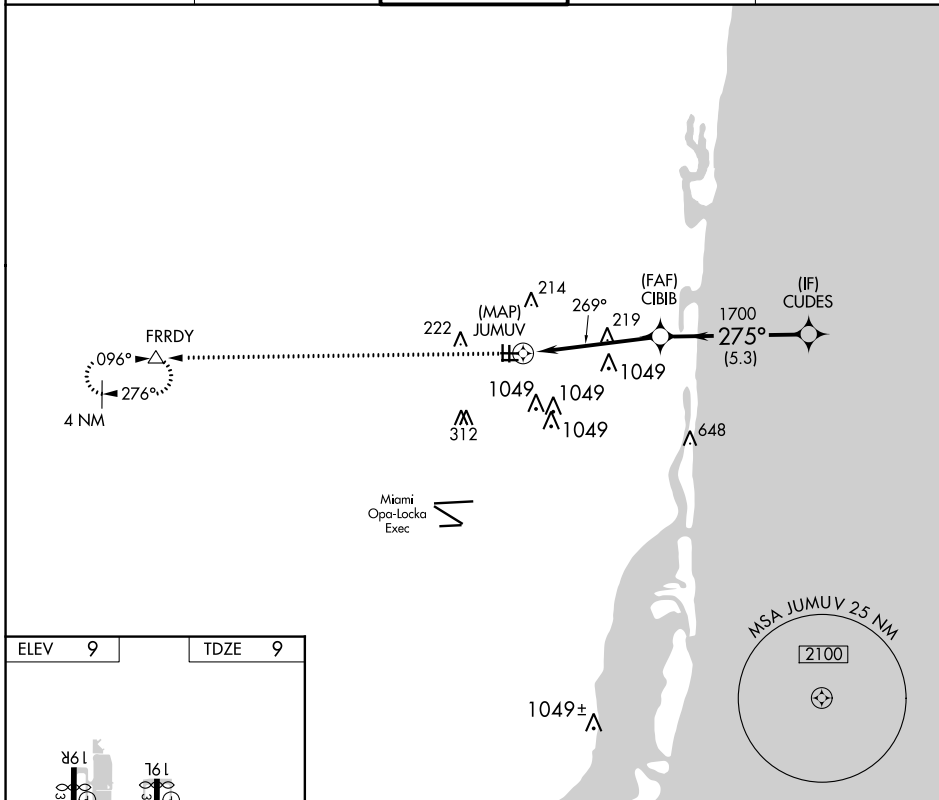
NORTH PERRY (HWO)

RNP APCH. RADAR required for procedure entry.

▼ Rwy 28R helicopter visibility reduction below 3/4 SM NA. Straight-in minimums NA at night. Circling Rwy 1R, 10L, 19L, 28R NA at night. Circling NA for Cat C south of Rwy 10R-28L.

MISSED APPROACH: Climb to 2000 direct FRRDY and hold.

ATIS 135.475	MIAMI APP CON 128.6 306.975	NORTH PERRY TOWER* 132.1 (CTAF) 0 254.3	GND CON 120.45 254.3	UNICOM 122.95
------------------------	---------------------------------------	--	--------------------------------	-------------------------



CATEGORY	A	B	C	D
LNAV MDA	520-1	511 (600-1)	520-1 3/8 511 (600-1 3/8)	NA
CIRCLING	560-1	551 (600-1)	560-1 1/2 551 (600-1 1/2)	NA

SE-3, 22 FEB 2024 to 21 MAR 2024

SE-3, 22 FEB 2024 to 21 MAR 2024