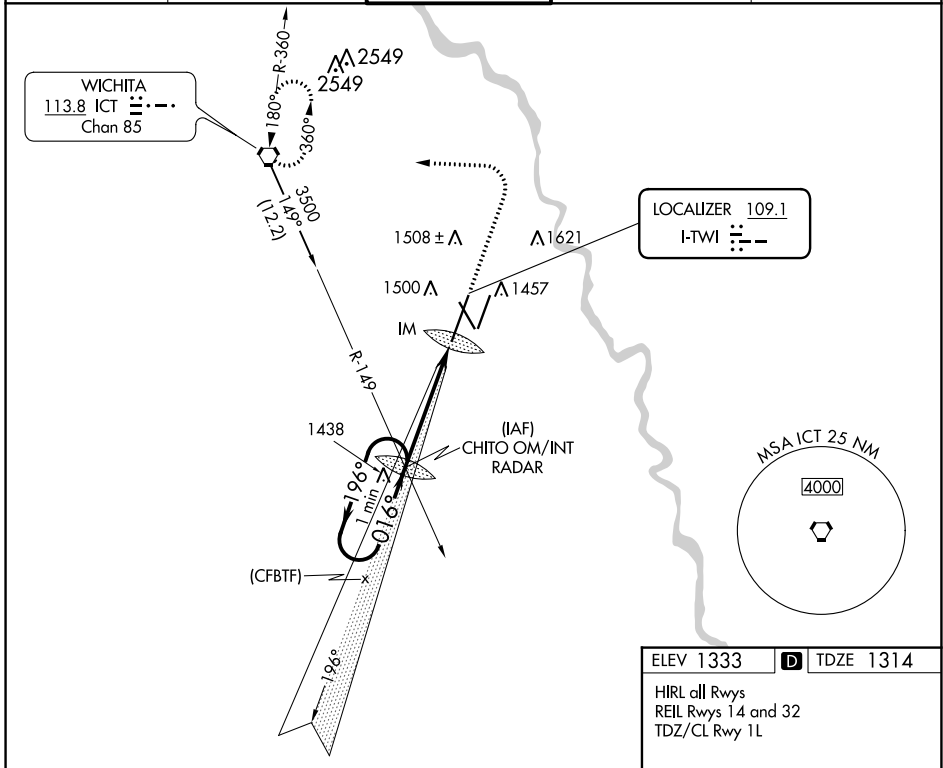


LOC I-TWI <b>109.1</b>	APP CRS <b>016°</b>	Rwy Idg <b>10302</b> TDZE <b>1314</b> Apt Elev <b>1333</b>
---------------------------	------------------------	--

**ILS RWY 1L (CAT II)**  
WICHITA DWIGHT D EISENHOWER NTL (ICT)

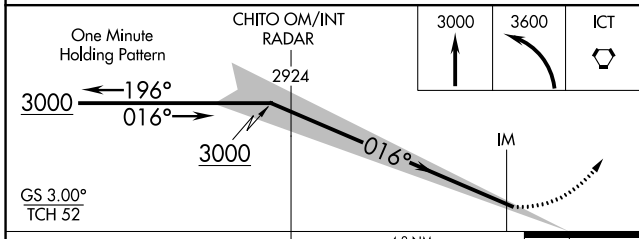
Simultaneous approach authorized with Rwy 1R.	ALSIF-2	MISSED APPROACH: Climb to 3000 then climbing left turn to 3600 direct ICT VORTAC and hold.

ATIS <b>125.15</b>	WICHITA APP CON <b>126.7 353.5</b>	WICHITA TOWER <b>118.2 257.8</b>	GND CON <b>121.9 348.6</b>	CLNC DEL <b>125.7</b>
-----------------------	---------------------------------------	-------------------------------------	-------------------------------	--------------------------



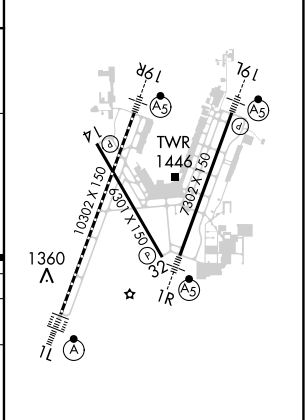
NC-2, 22 FEB 2024 to 21 MAR 2024

NC-2, 22 FEB 2024 to 21 MAR 2024



ELEV 1333	<b>D</b> TDZE 1314
-----------	--------------------

HIRL all Rwys  
REIL Rwy 14 and 32  
TDZ/CL Rwy 1L



CATEGORY	A	B	C	D
S-ILS 1L	RA 100/12 100 DA 1414			

**CATEGORY II ILS - SPECIAL AIRCREW & AIRCRAFT CERTIFICATION REQUIRED**

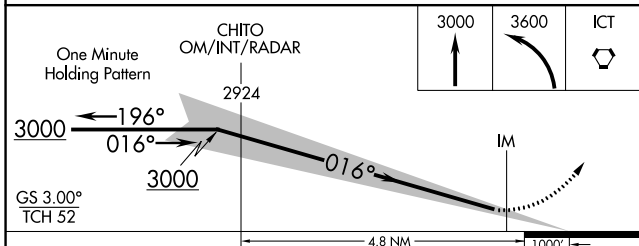
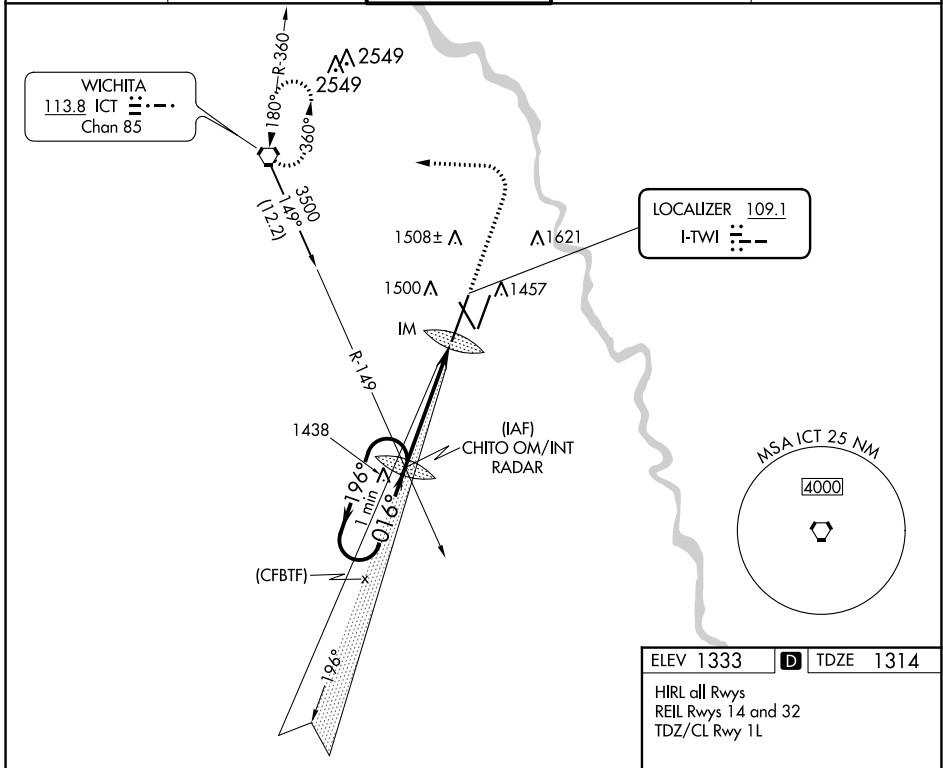
LOC I-TWI <b>109.1</b>	APP CRS <b>016°</b>	Rwy Idg <b>10302</b> TDZE <b>1314</b> Apt Elev <b>1333</b>
---------------------------	------------------------	--

# ILS RWY 1L (SA CAT I)

WICHITA DWIGHT D EISENHOWER NTL (ICT)

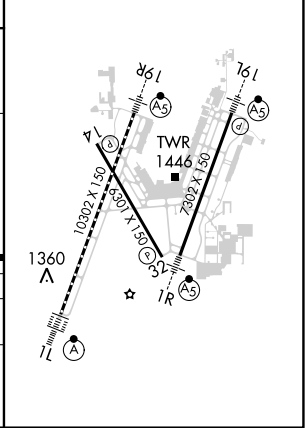
<p>Simultaneous approach authorized with Rwy 1R. Requires specific OPSPEC, MSPEC or LOA approval and use of HUD to DH.</p>	<p>ALSIF-2</p>	<p>MISSED APPROACH: Climb to 3000 then climbing left turn to 3600 direct ICT VORTAC and hold.</p>
--	----------------	---

ATIS <b>125.15</b>	WICHITA APP CON <b>126.7 353.5</b>	WICHITA TOWER <b>118.2 257.8</b>	GND CON <b>121.9 348.6</b>	CLNC DEL <b>125.7</b>
-----------------------	---------------------------------------	-------------------------------------	-------------------------------	--------------------------



ELEV 1333	<b>D</b> TDZE 1314
-----------	--------------------

HIRL all Rwys  
REIL Rwy 14 and 32  
TDZ/CL Rwy 1L



CATEGORY	A	B	C	D
S-ILS 1L	RA 149/14 150 DA 1464			

**SA CATEGORY I ILS - SPECIAL AIRCREW & AIRCRAFT CERTIFICATION REQUIRED**

NC-2, 22 FEB 2024 to 21 MAR 2024


NC-2, 22 FEB 2024 to 21 MAR 2024

LOC/DME I-MVP <b>111.55</b> Chan <b>52 (Y)</b>	APP CRS <b>196°</b>	Rwy ldg <b>7302</b> TDZE <b>1320</b> Apt Elev <b>1333</b>
--	------------------------	---

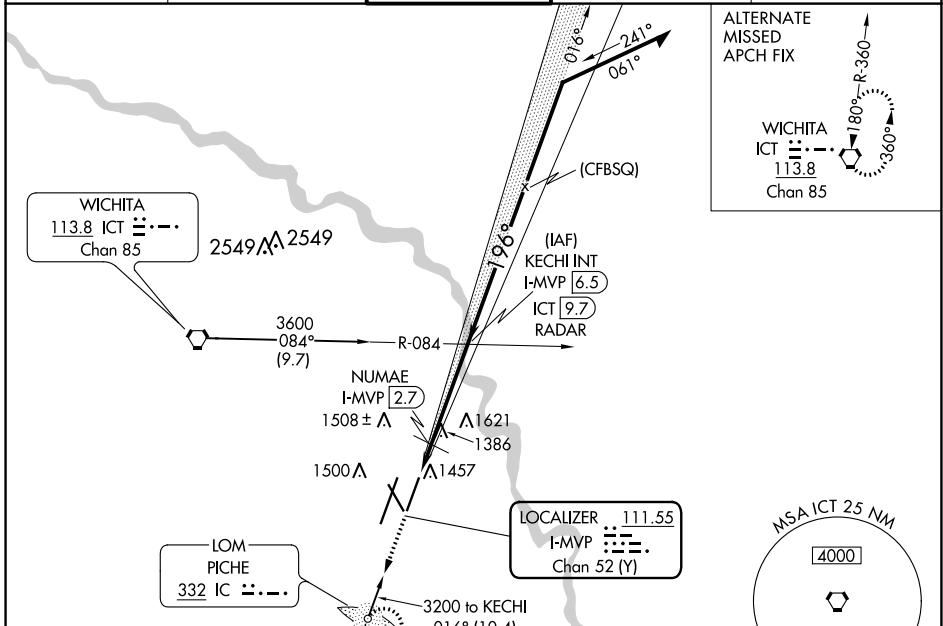
# ILS or LOC RWY 19L

WICHITA DWIGHT D EISENHOWER NTL (ICT)

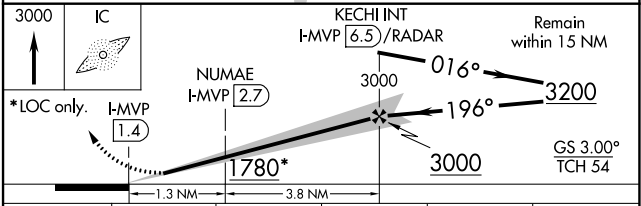
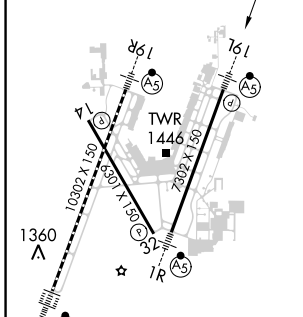
**⚠** ADF required. Simultaneous approach authorized with ILS or LOC RWY 19R. For inoperative MALSRL, increase S-ILS 19L Cat E visibility to 3/4 mile, S-LOC 19L Cat E visibility to 1 1/8 mile, NUMAE fix minimums: S-LOC 19L Cat C/D/E visibility to 1 mile.

**MALSRL**  
  
MISSED APPROACH: Climb to 3000 direct PICHE LOM and hold.

ATIS <b>125.15</b>	WICHITA APP CON <b>126.7 353.5</b>	WICHITA TOWER <b>118.2 257.8</b>	GND CON <b>121.9 348.6</b>	CLNC DEL <b>125.7</b>
-----------------------	---------------------------------------	-------------------------------------	-------------------------------	--------------------------



ELEV 1333	<b>D</b> TDZE 1320
-----------	--------------------



CATEGORY	A	B	C	D	E
S-ILS 19L	1520-1/2 200 (200-1/2)				
S-LOC 19L	1780-1/2	460 (500-1/2)	1780-7/8 460 (500-7/8)		
<b>C</b> CIRCLING	1800-1	467 (500-1)	1980-1 3/4 647 (700-1 3/4)	1980-2 647 (700-2)	2000-2 1/4 667 (700-2 1/4)
NUMAE FIX MINIMUMS (DME REQUIRED)					
S-LOC 19L	1700-1/2	380 (400-1/2)	1700-5/8 380 (400-5/8)		
<b>C</b> CIRCLING	1800-1	467 (500-1)	1980-1 3/4 647 (700-1 3/4)	1980-2 647 (700-2)	2000-2 1/4 667 (700-2 1/4)

FAF to MAP 5.1 NM					
Knots	60	90	120	150	180
Min:Sec	5:06	3:24	2:33	2:02	1:42

NC-2, 22 FEB 2024 to 21 MAR 2024

NC-2, 22 FEB 2024 to 21 MAR 2024

LOC I-HOV <b>110.5</b>	APP CRS <b>196°</b>	Rwy Idg <b>10302</b> TDZE <b>1330</b> Apt Elev <b>1333</b>
---------------------------	------------------------	--

# ILS or LOC RWY 19R

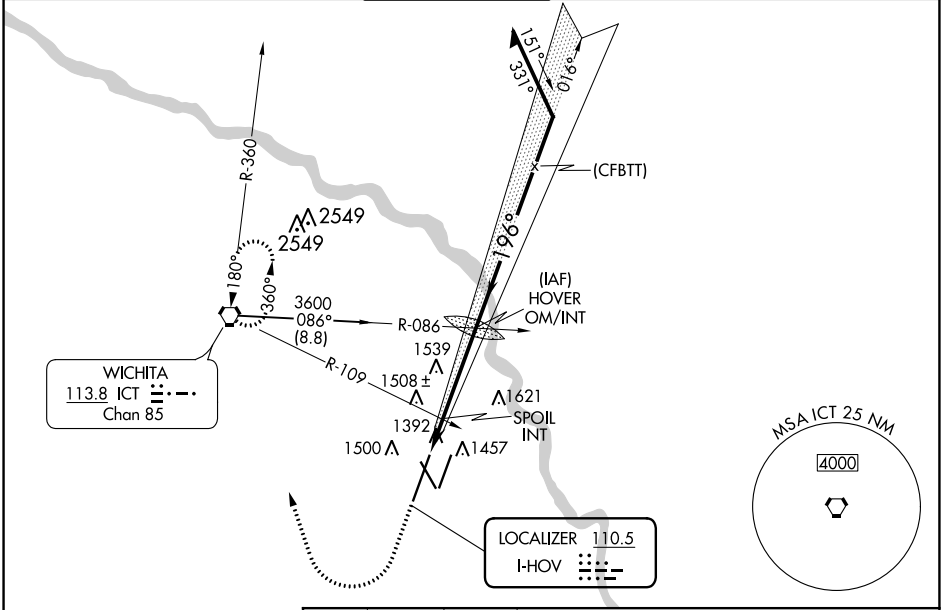
WICHITA DWIGHT D EISENHOWER NTL (ICT)

**Simultaneous approach authorized with Rwy 19L. For inoperative MALSR, increase S-ILS 19R# Cat E visibility to RVR 4000, S-LOC 19R Cat E visibility to 1/2 mile, SPOIL FIX minimums: S-LOC 19R Cat D and E visibility to RVR 5000.**  
# RVR 1800 authorized with the use of FD or AP or HUD to DA.

**MALSR**

**MISSED APPROACH:** Climb to 3500 then climbing right turn to 3600 direct ICT VORTAC and hold.

ATIS <b>125.15</b>	WICHITA APP CON <b>126.7 353.5</b>	WICHITA TOWER <b>118.2 257.8</b>	GND CON <b>121.9 348.6</b>	CLNC DEL <b>125.7</b>
-----------------------	---------------------------------------	-------------------------------------	-------------------------------	--------------------------



NC-2, 22 FEB 2024 to 21 MAR 2024

NC-2, 22 FEB 2024 to 21 MAR 2024

ELEV 1333	<b>D</b>	TDZE 1330
-----------	----------	-----------

**HIRL** all Rwys  
**REIL** Rwys 14 and 32  
**TDZ/CL** Rwy 1L

FAF to MAP 4.9 NM

Knots	60	90	120	150	180
Min:Sec	4:54	3:16	2:27	1:58	1:38

	3500	3600	ICT	HOVER OM/INT	Remain within 15 NM
	*LOC only.		SPOIL INT	2947	016°
				1820*	196°
				3000	3600
				GS 3.00°	TCH 52
				1.4 NM	3.5 NM
CATEGORY	A	B	C	D	E
S-ILS 19R#	1530/24 200 (200-1/2)				
S-LOC 19R	1820/24	490 (500-1/2)	1820/40 490 (500-3/4)	1820/50 490 (500-1)	1820/60 490 (500-1 1/4)
CIRCLING	1820-1	487 (500-1)	1980-1 3/4 647 (700-1 3/4)	1980-2 647 (700-2)	2000-2 1/4 667 (700-2 1/4)
SPOIL FIX MINIMUMS (DUAL VOR RECEIVERS REQUIRED)					
S-LOC 19R	1660/24 330 (400-1/2)		1660/40 330 (400-3/4)		
CIRCLING	1800-1	467 (500-1)	1980-1 3/4 647 (700-1 3/4)	1980-2 647 (700-2)	2000-2 1/4 667 (700-2 1/4)

LOC I-TWI <b>109.1</b>	APP CRS <b>016°</b>	Rwy Idg <b>10302</b> TDZE <b>1314</b> Apt Elev <b>1333</b>
---------------------------	------------------------	--

# ILS or LOC RWY 1L

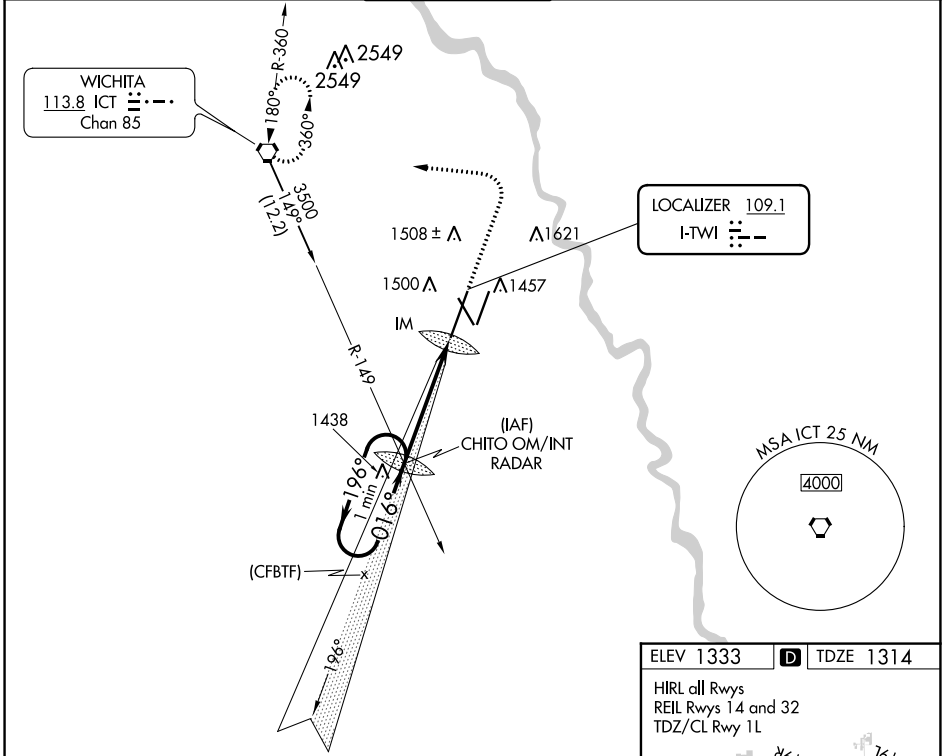
WICHITA DWIGHT D EISENHOWER NTL (ICT)

▼ Simultaneous approach authorized with Rwy 1R.  
▲ For inoperative ALSF-2, increase S-ILS 1L Cat E visibility to RVR 4000 and S-LOC 1L Cat E visibility to RVR 6000.



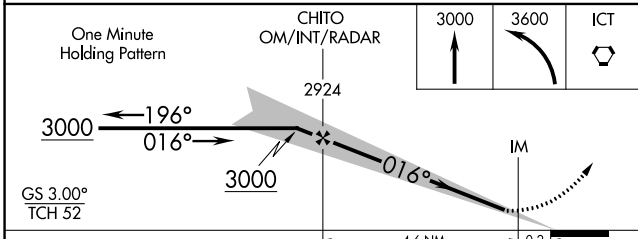
MISSED APPROACH: Climb to 3000 then climbing left turn to 3600 direct ICT VORTAC and hold.

ATIS <b>125.15</b>	WICHITA APP CON <b>126.7 353.5</b>	WICHITA TOWER <b>118.2 257.8</b>	GND CON <b>121.9 348.6</b>	CLNC DEL <b>125.7</b>
-----------------------	---------------------------------------	-------------------------------------	-------------------------------	--------------------------



NC-2, 22 FEB 2024 to 21 MAR 2024

NC-2, 22 FEB 2024 to 21 MAR 2024



ELEV 1333	<b>D</b> TDZE 1314
-----------	--------------------

HIRL all Rwys  
REIL Rwy 14 and 32  
TDZ/CL Rwy 1L

FAF to MAP 4.8 NM

Knots	60	90	120	150	180
Min:Sec	4:48	3:12	2:24	1:55	1:36

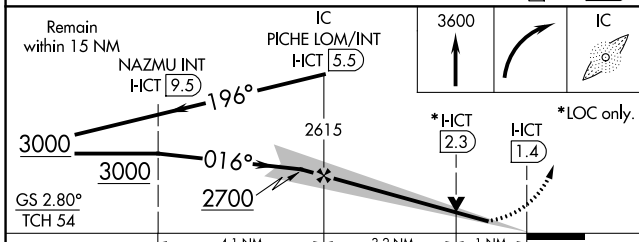
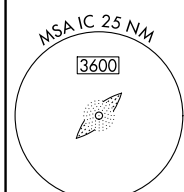
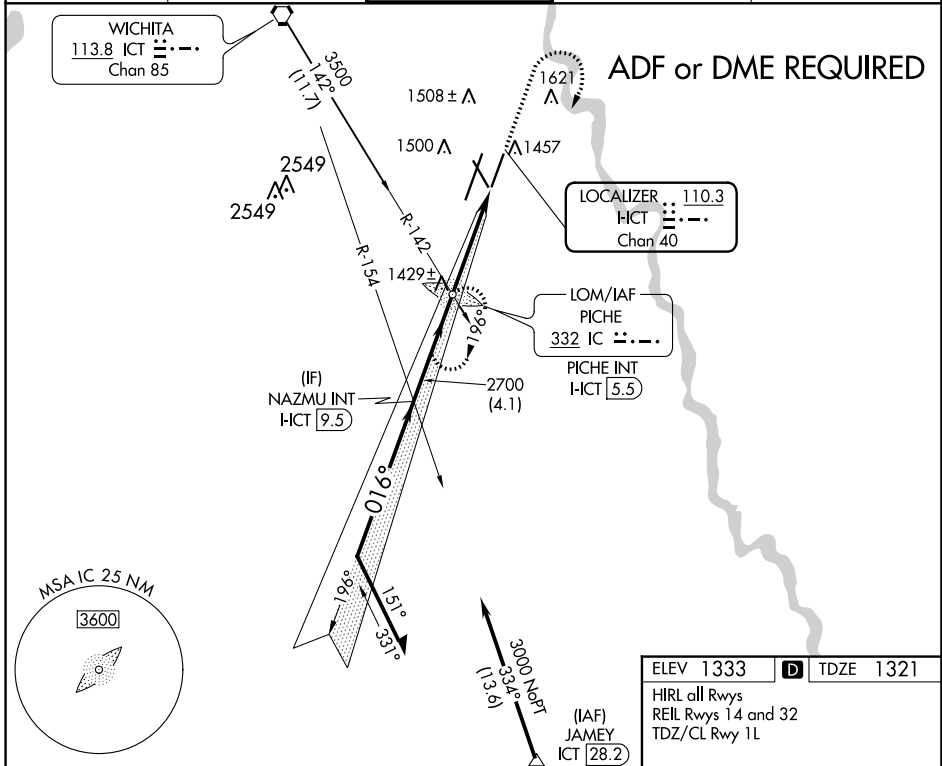
LOC/DME HCT <b>110.3</b> Chan 40	APP CRS <b>016°</b>	Rwy Idg <b>7302</b> TDZE <b>1321</b> Apt Elev <b>1333</b>
--	------------------------	---

# ILS or LOC RWY 1R

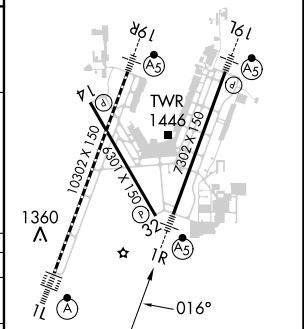
WICHITA DWIGHT D EISENHOWER NTL (ICT)

<p>Simultaneous approach authorized with Rwy 1L. ADF or DME required. #RVR 1800 authorized with the use of FD or AP or HUD to DA.</p>	<p>MALSR </p>	<p>MISSED APPROACH: Climb to 3600 then right turn direct PICHE LOM/INT/HCT 5.5 DME and hold.</p>
---	-------------------	--

ATIS <b>125.15</b>	WICHITA APP CON <b>126.7 353.5</b>	WICHITA TOWER <b>118.2 257.8</b>	GND CON <b>121.9 348.6</b>	CLNC DEL <b>125.7</b>
-----------------------	---------------------------------------	-------------------------------------	-------------------------------	--------------------------



ELEV 1333	TDZE 1321
HIRL all Rwys	
REIL Rws 14 and 32	
TDZ/CL Rwy 1L	



CATEGORY	A	B	C	D	E
S-ILS 1R#	1521/24 200 (200-½)				
S-LOC 1R	1680/24	359 (400-½)	1680/40	359 (400-¾)	
CIRCLING	1800-1	467 (500-1)	1980-1¾ 647 (700-1¾)	1980-2 647 (700-2)	2000-2¼ 667 (700-2¼)

FAF to MAP 4.1 NM					
Knots	60	90	120	150	180
Min:Sec	4:06	2:44	2:03	1:38	1:22

NC-2, 22 FEB 2024 to 21 MAR 2024

NC-2, 22 FEB 2024 to 21 MAR 2024

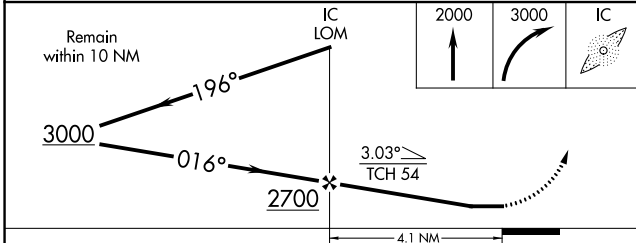
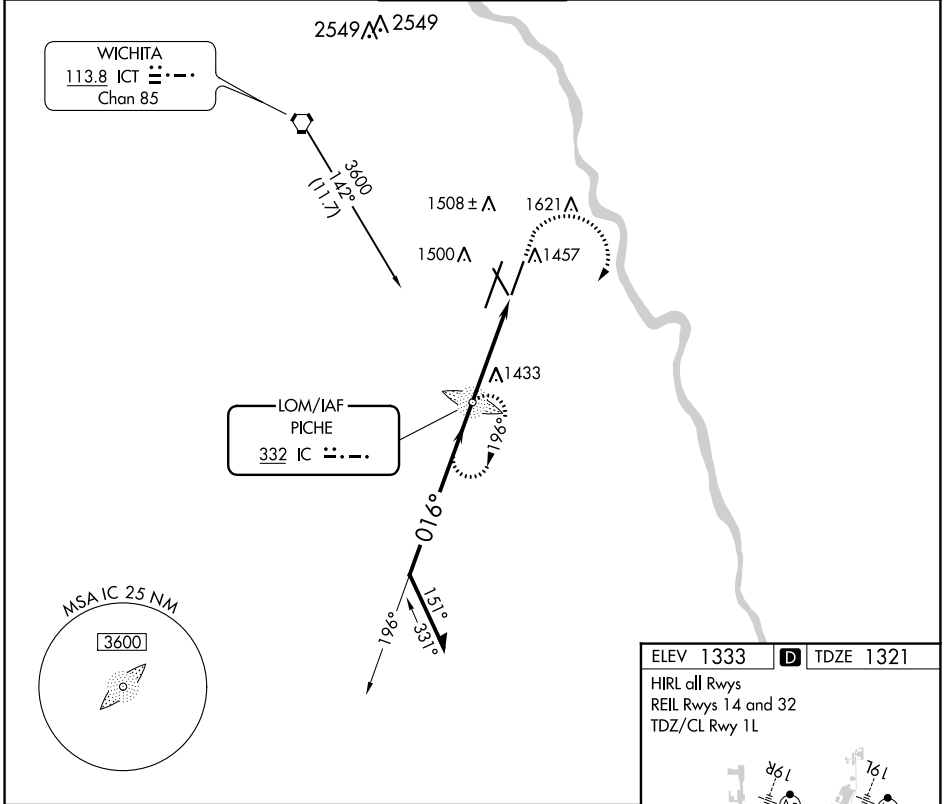
LOM IC <b>332</b>	APP CRS <b>016°</b>	Rwy Idg <b>7302</b>
		TDZE <b>1321</b>
		Apt Elev <b>1333</b>

# NDB RWY 1R

WICHITA DWIGHT D EISENHOWER NTL (ICT)

<p>For inoperative MALS, increase S-1R Cat C visibility to RVR 5000.</p>	<p>MALS</p>	<p>MISSED APPROACH: Climb to 2000 then climbing right turn to 3000 direct PICHE LOM and hold.</p>

ATIS <b>125.15</b>	WICHITA APP CON <b>126.7 353.5</b>	WICHITA TOWER <b>118.2 257.8</b>	GND CON <b>121.9 348.6</b>	CLNC DEL <b>125.7</b>
-----------------------	---------------------------------------	-------------------------------------	-------------------------------	--------------------------



CATEGORY	A	B	C	D
S-1R	1740/40 419 (500-3/4)		1740/50 419 (500-1)	
CIRCLING	1800-1 467 (500-1)		1980-1 647 (700-1 3/4)	1980-2 647 (700-2)

ELEV 1333 TDZE 1321

HIRL all Rwys  
REIL Rwys 14 and 32  
TDZ/CL Rwy 1L

TWR 1446  
1360   
10302 X 150  
300 X 150  
2002 X 150  
1R   
016°

FAF to MAP 4.1 NM

Knots	60	90	120	150	180
Min:Sec	4:06	2:44	2:03	1:38	1:22

NC-2, 22 FEB 2024 to 21 MAR 2024

NC-2, 22 FEB 2024 to 21 MAR 2024

WAAS CH <b>65929</b> <b>W01B</b>	APP CRS <b>016°</b>	Rwy Idg <b>7302</b> TDZE <b>1321</b> Apt Elev <b>1333</b>
--	------------------------	---

# RNAV (GPS) RWY 1R

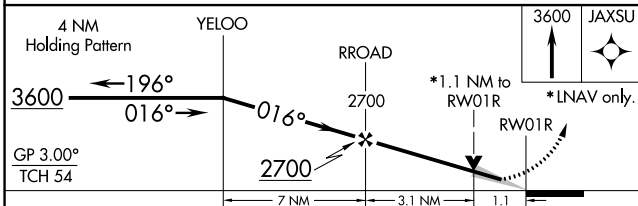
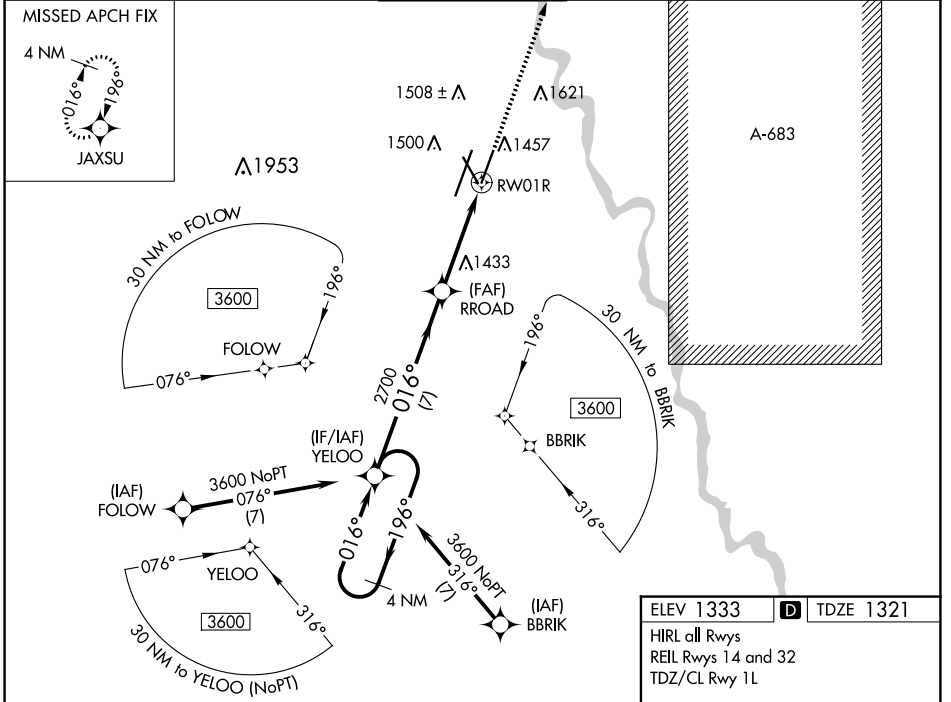
WICHITA DWIGHT D EISENHOWER NTL (ICT)

**⚠** For uncompensated Baro-VNAV systems, LNAV/VNAV NA below -15°C (5°F) or above 54°C (130°F). For inoperative MALS, increase LPV Cat E visibility to 3/4, LNAV/VNAV Cat E visibility to 1 1/2 and LNAV Cat C, D and E visibility to 1 1/2. DME/DME RNP-0.3 NA. LNAV procedure NA during simultaneous operations. Simultaneous approach authorized with ILS or LOC RWY 1L and ILS RWY 1L (CAT II). Use of FD or AP providing RNAV track guidance required during simultaneous operations. # RVR 1800 authorized with use of FD or AP or HUD to DA.

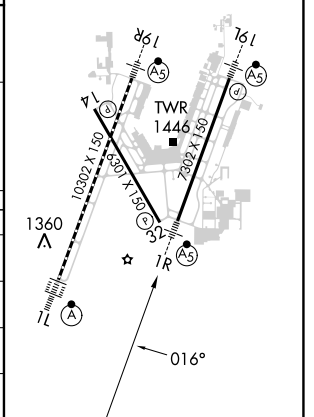


**MISSED APPROACH:**  
Climb to 3600 direct JAXSU and hold.

ATIS <b>125.15</b>	WICHITA APP CON <b>126.7 353.5</b>	WICHITA TOWER <b>118.2 257.8</b>	GND CON <b>121.9 348.6</b>	CLNC DEL <b>125.7</b>
-----------------------	---------------------------------------	-------------------------------------	-------------------------------	--------------------------



ELEV 1333	<b>D</b> TDZE 1321
HIRL all Rwys	
REIL Rwys 14 and 32	
TDZ/CL Rwy 1L	



CATEGORY	A	B	C	D	E
LPV DA#		1521/24	200 (200-1/2)		
LNAV/VNAV DA		1660/32	339 (400-5/8)		
LNAV MDA	1740/24	419 (500-1/2)	1740/40	419 (500-3/4)	
<b>C</b> CIRCLING	1800-1	467 (500-1)	1980-1 3/4 647 (700-1 3/4)	1980-2 647 (700-2)	2000-2 1/4 667 (700-2 1/4)

NC-2, 22 FEB 2024 to 21 MAR 2024

NC-2, 22 FEB 2024 to 21 MAR 2024



WAAS CH <b>99617</b> <b>W32A</b>	APP CRS <b>326°</b>	Rwy Idg TDZE Apt Elev	<b>6301</b> <b>1322</b> <b>1333</b>
--	------------------------	-----------------------------	---

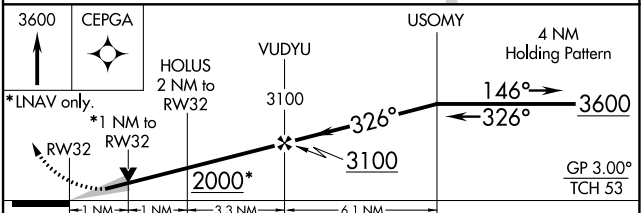
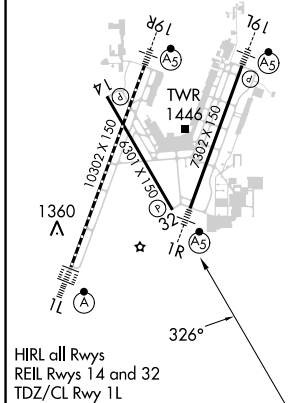
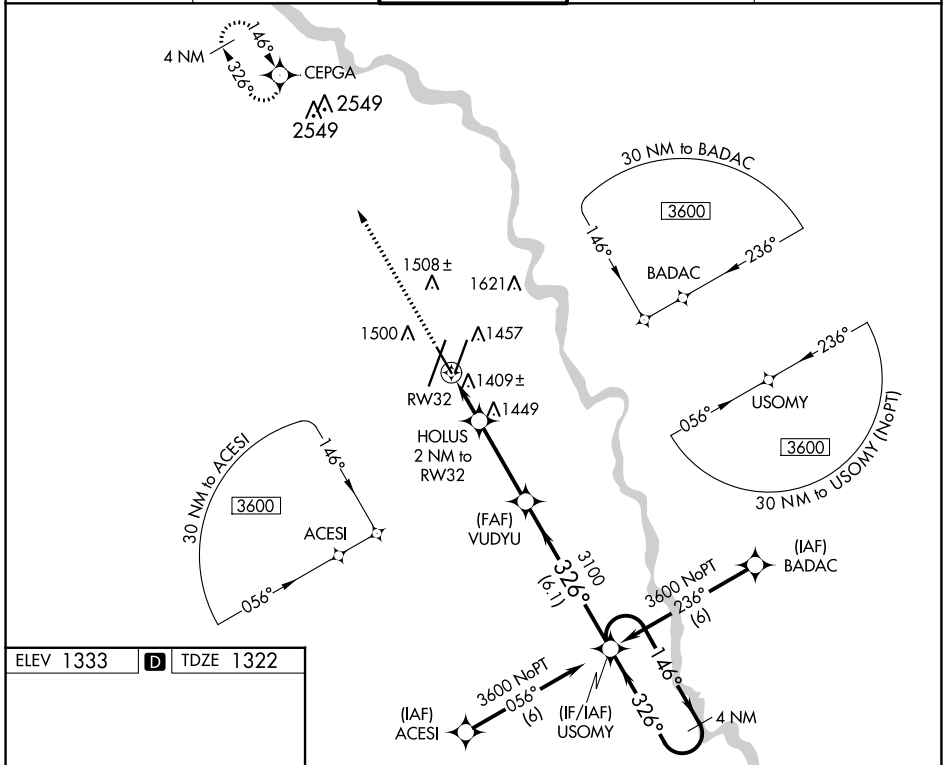
# RNAV (GPS) RWY 32

WICHITA DWIGHT D EISENHOWER NTL (ICT)

For uncompensated Baro-VNAV systems, LNAV/VNAV NA below -1.5°C (5°F) or above 54°C (130°F). DME/DME RNP-0.3 NA.

MISSED APPROACH: Climb to 3600 direct CEPGA and hold.

ATIS <b>125.15</b>	WICHITA APP CON <b>126.7 353.5</b>	WICHITA TOWER <b>118.2 257.8</b>	GND CON <b>121.9 348.6</b>	CLNC DEL <b>125.7</b>
-----------------------	---------------------------------------	-------------------------------------	-------------------------------	--------------------------



CATEGORY	A	B	C	D
LPV DA		1572-3/4	250 (300-3/4)	
LNAV/VNAV DA		1761-1 1/2	439 (500-1 1/2)	
LNAV MDA		1680-1 358 (400-1)		1680-1 1/4 358 (400-1 1/4)
<input checked="" type="checkbox"/> CIRCLING	1800-1	467 (500-1)	1980-1 3/4 647 (700-1 1/4)	1980-2 647 (700-2)

NC-2, 22 FEB 2024 to 21 MAR 2024

NC-2, 22 FEB 2024 to 21 MAR 2024

APP CRS <b>146°</b>	Rwy Idg TDZE Apt Elev	<b>6301</b> <b>1333</b> <b>1333</b>
------------------------	-----------------------------	---

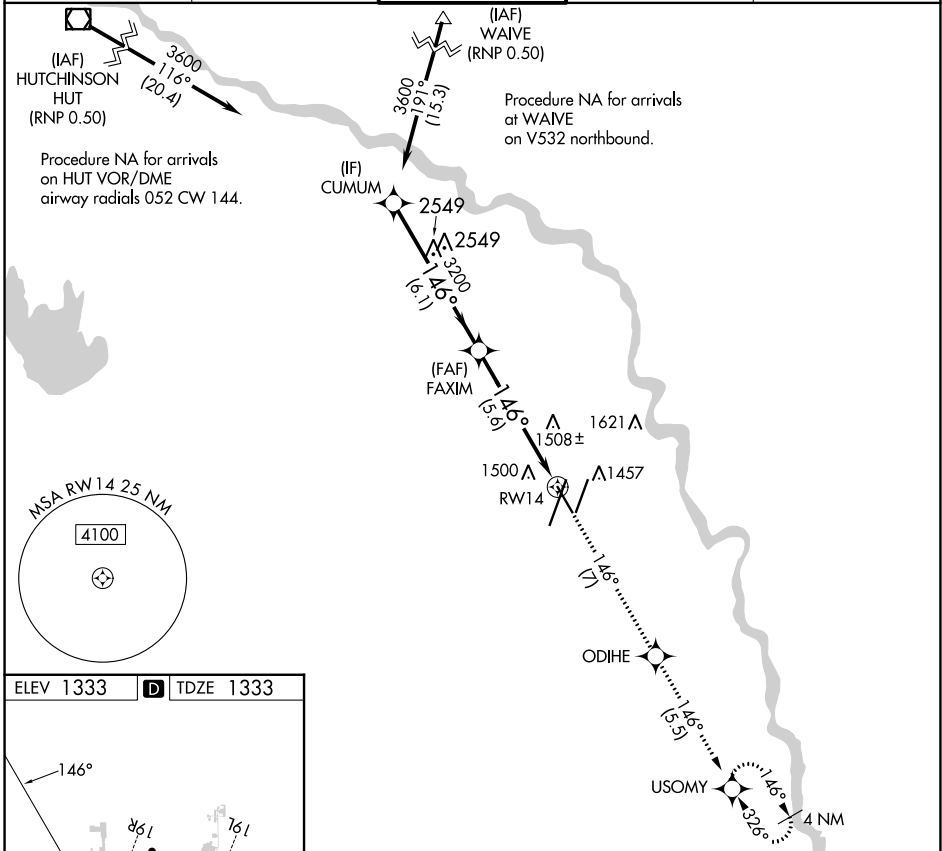
# RNAV (RNP) Z RWY 14

WICHITA DWIGHT D EISENHOWER NTL (ICT)

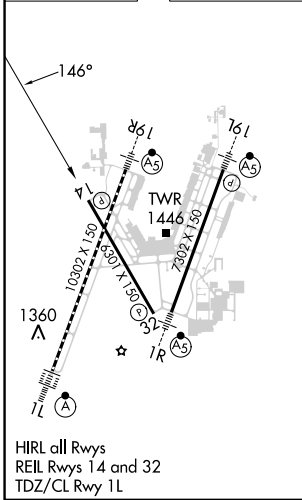
**▼** For uncompensated Baro-VNAV systems, procedure NA below -15°C ( 5°F) or above 54°C (130°F). GPS required.

MISSED APPROACH: Climb to 3600 on track 146° to ODIHE and on track 146° to USOMY and hold.

ATIS <b>125.15</b>	WICHITA APP CON <b>126.7 353.5</b>	WICHITA TOWER <b>118.2 257.8</b>	GND CON <b>121.9 348.6</b>	CLNC DEL <b>125.7</b>
-----------------------	---------------------------------------	-------------------------------------	-------------------------------	--------------------------



ELEV 1333	<b>D</b>	TDZE 1333
-----------	----------	-----------



VGSi and RNAV glidepath not coincident (VGSi Angle 3.00/TCH 50).		3600 ↑ tr 146°	ODIHE ✧ tr 146°	USOMY ✧ tr 146°
GP 3.00° TCH 50	CUMUM 3600	FAXIM 3200	RW14	
	6.1 NM	5.6 NM		
CATEGORY	A	B	C	D
RNP 0.11 DA	1682-1 1/8 349 (400-1 1/8)			
RNP 0.30 DA	1732-1 1/8 399 (400-1 1/8)			
<b>AUTHORIZATION REQUIRED</b>				

NC-2, 22 FEB 2024 to 21 MAR 2024

NC-2, 22 FEB 2024 to 21 MAR 2024

APP CRS	Rwy Idg	<b>7302</b>
<b>196°</b>	TDZE	<b>1320</b>
	Apt Elev	<b>1333</b>


# RNAV (RNP) Z RWY 19L

WICHITA DWIGHT D EISENHOWER NTL (ICT)

**RNP AR APCH.**

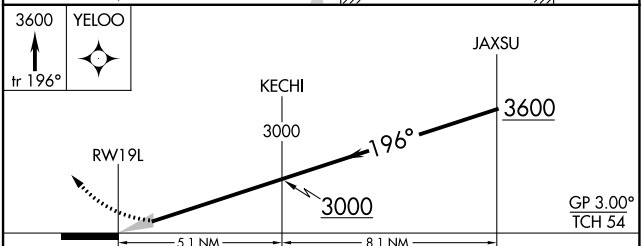
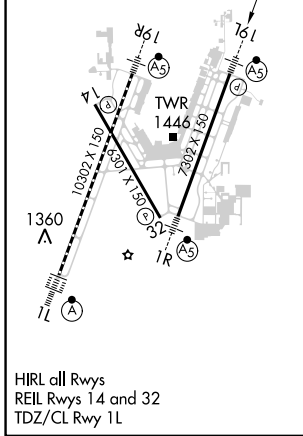
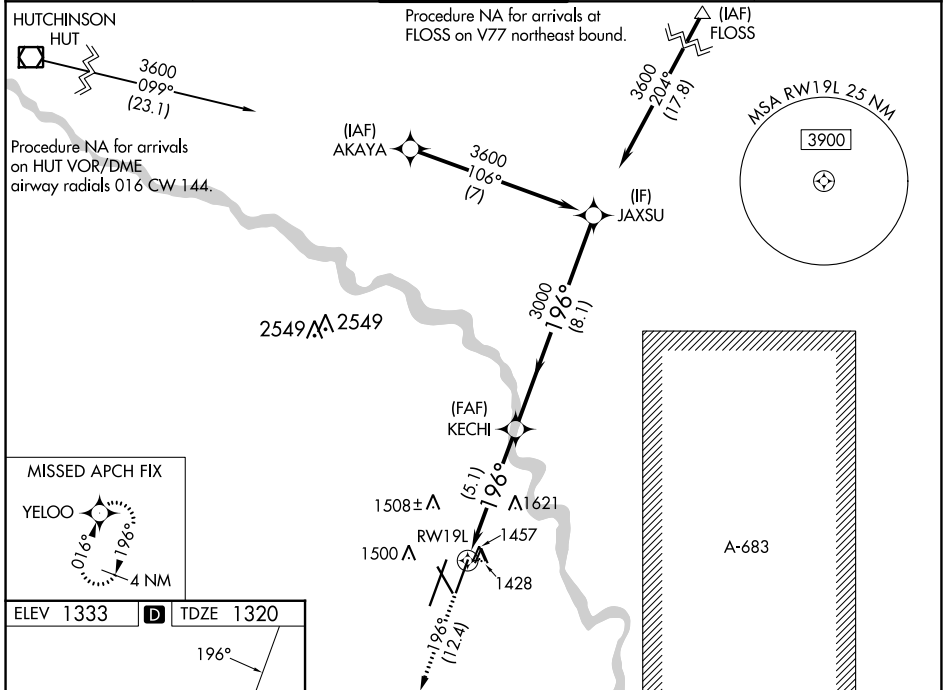
▼ For uncompensated Baro-VNAV systems, procedure NA below -15°C (5°F) or above 54°C (130°F). For inoperative MALSR, increase RNP 0.11 all Cats visibility to ¾ mile and RNP 0.30 all Cats visibility to 1¼ mile. GPS required. Simultaneous approach authorized with ILS or LOC RWY 19R. Use of FD or AP providing RNAV track guidance required during simultaneous operations.

**MALSR**



**MISSED APPROACH:** Climb to 3600 on track 196° to YELOO and hold.

<b>ATIS</b> <b>125.15</b>	<b>WICHITA APP CON</b> <b>126.7 353.5</b>	<b>WICHITA TOWER</b> <b>118.2 257.8</b>	<b>GND CON</b> <b>121.9 348.6</b>	<b>CLNC DEL</b> <b>125.7</b>
------------------------------	--	--	--------------------------------------	---------------------------------



CATEGORY	A	B	C	D
RNP 0.11 DA		1570-½	250 (300-½)	
RNP 0.30 DA		1800-1¼	480 (500-1¼)	

**AUTHORIZATION REQUIRED**

NC-2, 22 FEB 2024 to 21 MAR 2024

NC-2, 22 FEB 2024 to 21 MAR 2024

APP CRS	Rwy Idg	<b>10302</b>
<b>196°</b>	TDZE	<b>1330</b>
	Apt Elev	<b>1333</b>

# RNAV (RNP) Z RWY 19R

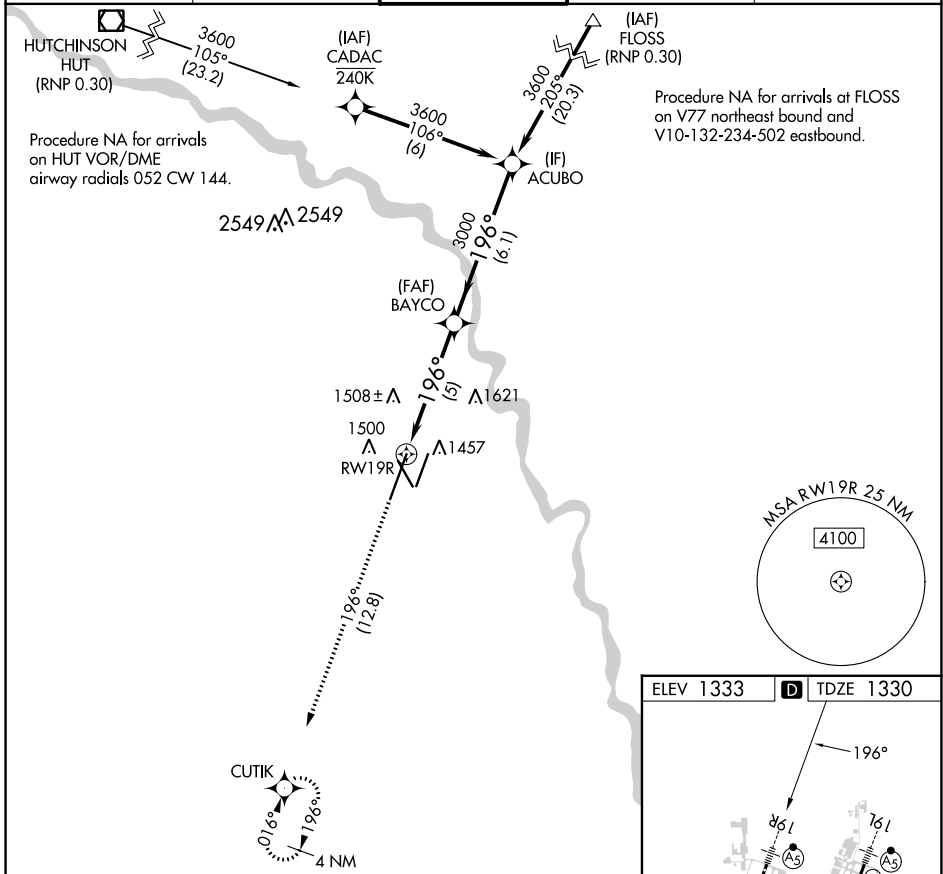
WICHITA DWIGHT D EISENHOWER NTL (ICT)

▼ For uncompensated Baro-VNAV systems, procedure NA below -15°C (5°F) or above 54°C (130°F). For inoperative MALS, increase all Cats visibility to 1 ¼ mile. GPS required.

MALS R

MISSED APPROACH: Climb to 4200 on track 196° to CUTIK and hold.

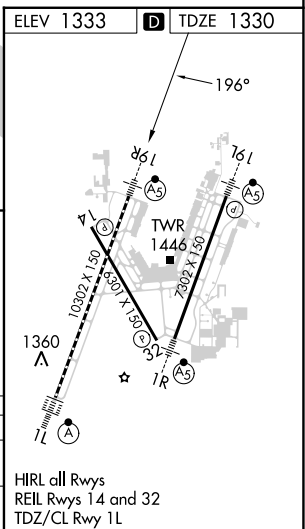
ATIS <b>125.15</b>	WICHITA APP CON <b>126.7 353.5</b>	WICHITA TOWER <b>118.2 257.8</b>	GND CON <b>121.9 348.6</b>	CLNC DEL <b>125.7</b>
-----------------------	---------------------------------------	-------------------------------------	-------------------------------	--------------------------



NC-2, 22 FEB 2024 to 21 MAR 2024

NC-2, 22 FEB 2024 to 21 MAR 2024

4200 ↑ tr 196°	CUTIK	BAYCO	ACUBO
		3000	3600
RW19R		3000	GP 3.00° TCH 52
	5 NM	6.1 NM	
CATEGORY	A	B	C
RNP 0.30 DA	1727/50		397 (400-1)
<b>AUTHORIZATION REQUIRED</b>			



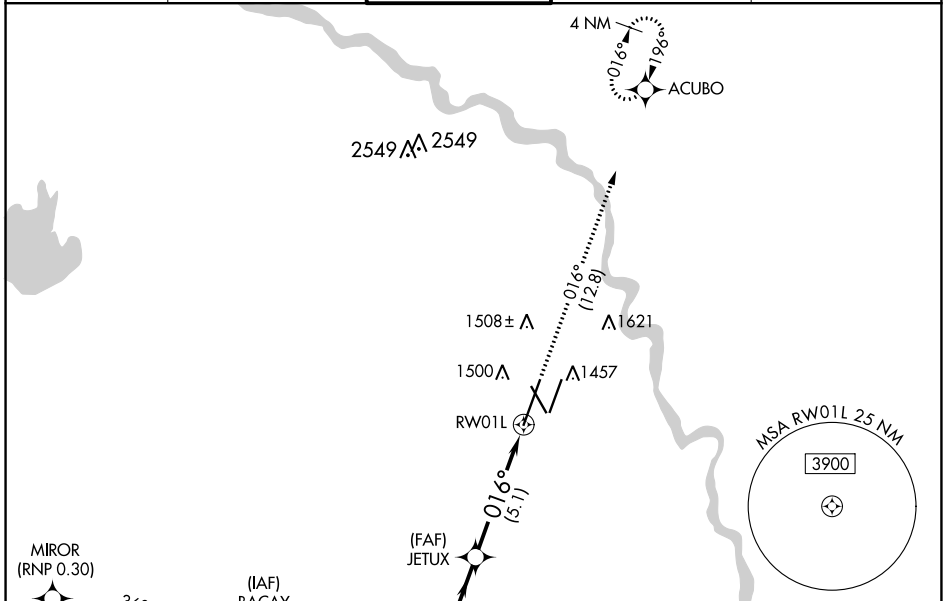
APP CRS	Rwy Idg	<b>10302</b>
<b>016°</b>	TDZE	<b>1314</b>
	Apt Elev	<b>1333</b>

# RNAV (RNP) Z RWY 1L

WICHITA DWIGHT D EISENHOWER NTL (ICT)

RNP AR APCH	<p>▼ Simultaneous approach authorized. Use of FD or AP providing RNAV track guidance required during simultaneous operations. For uncompensated Baro-VNAV systems, procedure NA below -15°C or above 54°C. For inop ALS, increase RNP 0.15 all Cats visibility to RVR 4500 and RNP 0.30 all Cats visibility to RVR 5500.</p>	<p>ALSF-2</p>	<p>MISSED APPROACH: Climb to 4200 on track 016° to ACUBO and hold.</p>
-------------	--	---------------	--

ATIS <b>125.15</b>	WICHITA APP CON <b>126.7 353.5</b>	WICHITA TOWER <b>118.2 257.8</b>	GND CON <b>121.9 348.6</b>	CLNC DEL <b>125.7</b>
-----------------------	---------------------------------------	-------------------------------------	-------------------------------	--------------------------

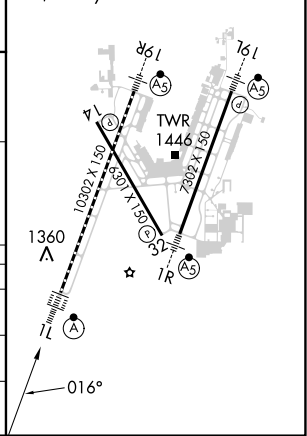
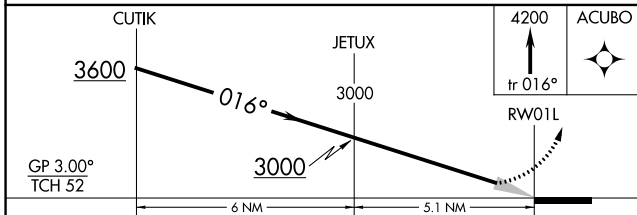


NC-2, 22 FEB 2024 to 21 MAR 2024

NC-2, 22 FEB 2024 to 21 MAR 2024

ELEV 1333	<b>D</b> TDZE 1314
-----------	--------------------

HIRL all Rwys  
REIL Rws 14 and 32  
TDZ/CL Rwy 1L



CATEGORY	A	B	C	D
RNP 0.15 DA		1626/28	312 (300-3%)	
RNP 0.30 DA		1676/35	362 (400-3%)	
<b>AUTHORIZATION REQUIRED</b>				

WAAS CH <b>87017</b> <b>W14A</b>	APP CRS <b>146°</b>	Rwy Idg TDZE Apt Elev	<b>6301</b> <b>1333</b> <b>1333</b>
--	------------------------	-----------------------------	---

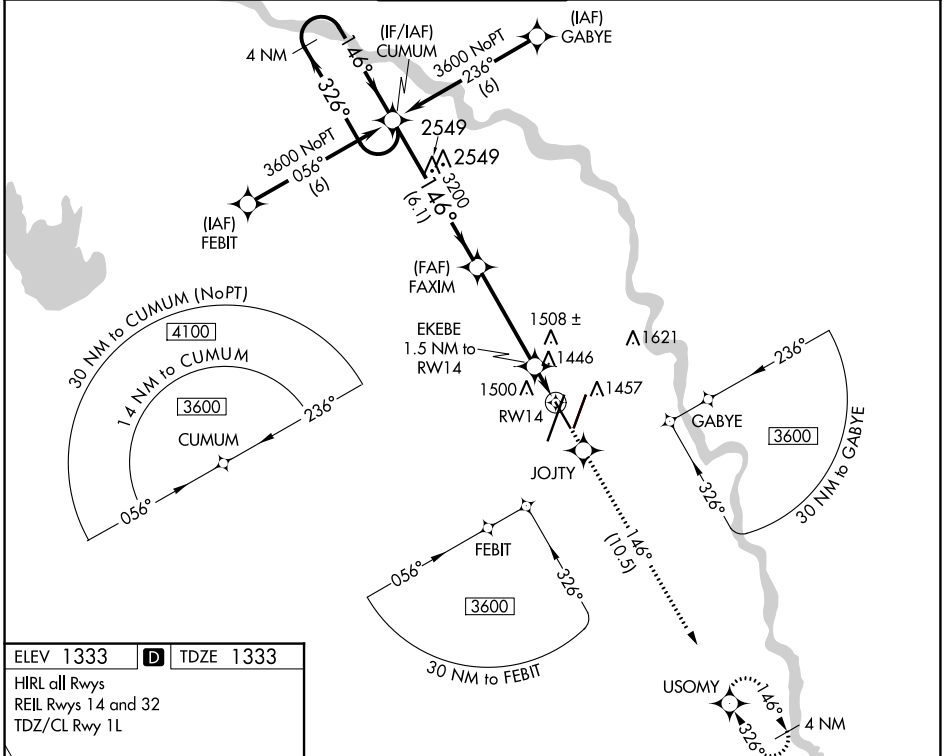
# RNAV (GPS) Y RWY 14

WICHITA DWIGHT D EISENHOWER NTL (ICT)

▼ For uncompensated Baro-VNAV systems, LNAV/VNAV NA below -15°C (5°F) or above 54°C (130°F).  
DME/DME RNP-0.3 NA.

MISSED APPROACH: Climb to 3600 direct JOJTY and on track 146° to USOMY and hold.

ATIS <b>125.15</b>	WICHITA APP CON <b>126.7 353.5</b>	WICHITA TOWER <b>118.2 257.8</b>	GND CON <b>121.9 348.6</b>	CLNC DEL <b>125.7</b>
-----------------------	---------------------------------------	-------------------------------------	-------------------------------	--------------------------

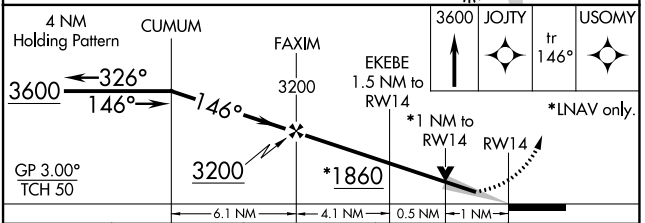
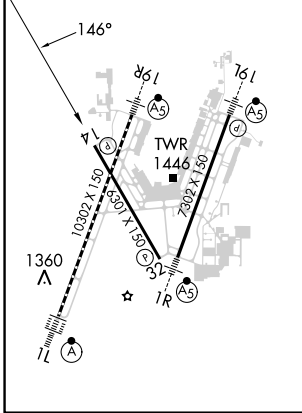


NC-2, 22 FEB 2024 to 21 MAR 2024

NC-2, 22 FEB 2024 to 21 MAR 2024

ELEV 1333	<b>D</b>	TDZE 1333
-----------	----------	-----------

HIRL all Rwys  
REIL Rwys 14 and 32  
TDZ/CL Rwy 1L



CATEGORY	A	B	C	D
LPV DA		1583- <sup>3</sup> / <sub>4</sub>	250 (300- <sup>3</sup> / <sub>4</sub> )	
LNAV/VNAV DA		1799-1 <sup>3</sup> / <sub>4</sub>	466 (500-1 <sup>3</sup> / <sub>4</sub> )	
LNAV MDA		1700-1	367 (400-1)	
<b>C</b> CIRCLING	1800-1	467 (500-1)	1980-1 <sup>3</sup> / <sub>4</sub> 647 (700-1 <sup>3</sup> / <sub>4</sub> )	1980-2 647 (700-2)



WAAS CH <b>63019</b> <b>W19A</b>	APP CRS <b>196°</b>	Rwy Idg <b>10302</b> TDZE <b>1330</b> Apt Elev <b>1333</b>
--	------------------------	--

# RNAV (GPS) Y RWY 19R

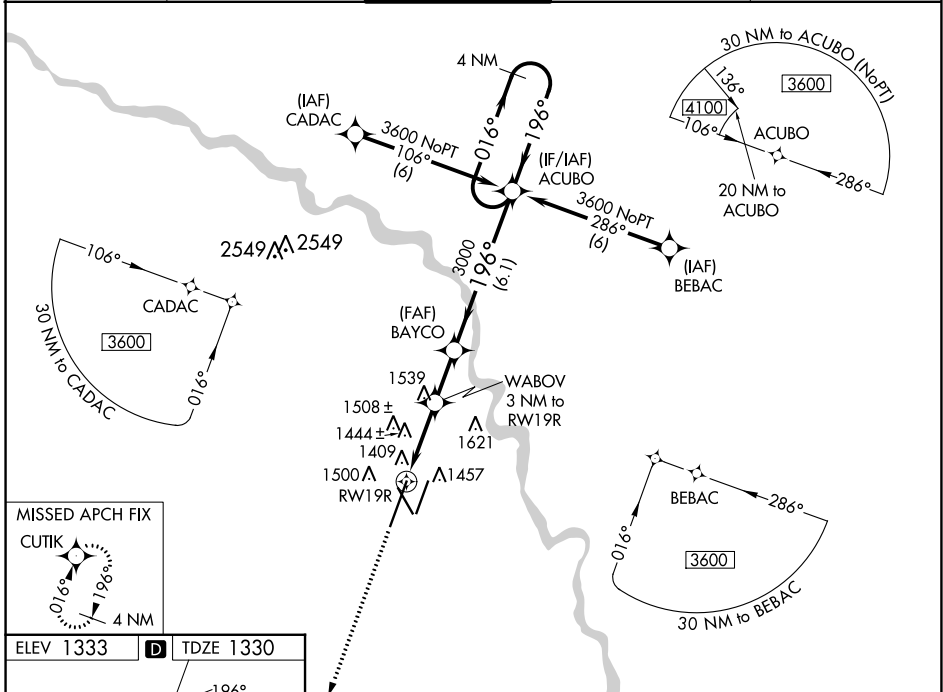
WICHITA DWIGHT D EISENHOWER NTL (ICT)

**▼** For uncompensated Baro-VNAV systems, LNAV/VNAV NA below -15°C ( 5°F) or above 54°C (130°F). DME/DME RNP-0.3 NA. For inoperative MALSR, increase LNAV Cat C/D visibility to RVR 6000. # RVR 1800 authorized with use of FD or AP or HUD to DA.

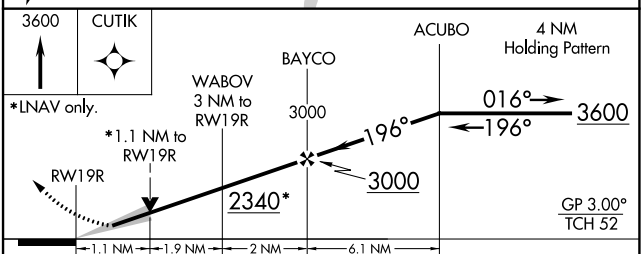
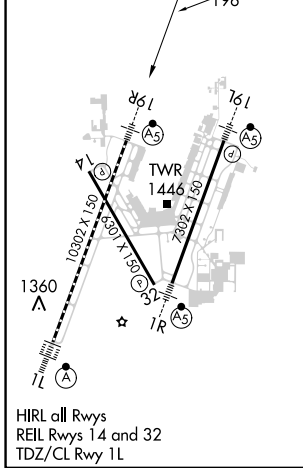
**MALSR**

**MISSED APPROACH:** Climb to 3600 direct CUTIK and hold.

ATIS <b>125.15</b>	WICHITA APP CON <b>126.7 353.5</b>	WICHITA TOWER <b>118.2 257.8</b>	GND CON <b>121.9 348.6</b>	CLNC DEL <b>125.7</b>
-----------------------	---------------------------------------	-------------------------------------	-------------------------------	--------------------------



ELEV 1333	<b>D</b>	TDZE 1330
-----------	----------	-----------



CATEGORY	A	B	C	D
LPV DA #	1530/24 200 (200-½)			
LNAV/VNAV DA	1742/45 412 (500-¾)			
LNAV MDA	1740/24	410 (500-½)	1740/40	410 (500-¾)
<b>C</b> CIRCLING	1800-1	467 (500-1)	1980-1¾ 647 (700-1¾)	1980-2 647 (700-2)

NC-2, 22 FEB 2024 to 21 MAR 2024

NC-2, 22 FEB 2024 to 21 MAR 2024



WAAS CH <b>61219</b> <b>W01A</b>	APP CRS <b>016°</b>	Rwy Idg <b>10302</b> TDZE <b>1314</b> Apt Elev <b>1333</b>
--	------------------------	--

# RNAV (GPS) Y RWY 1L

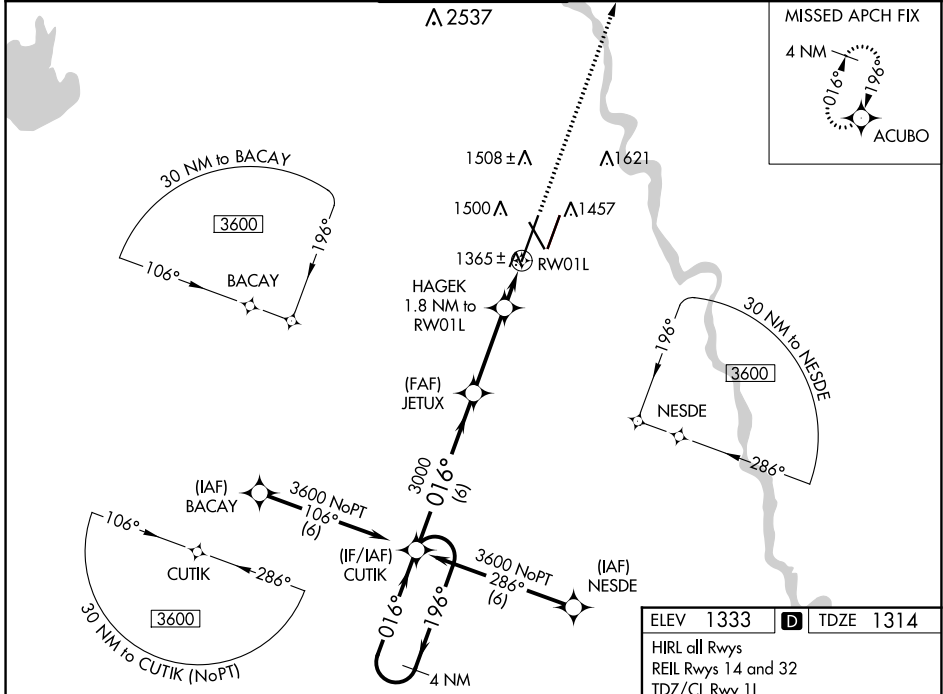
WICHITA DWIGHT D EISENHOWER NTL (ICT)

**⚠** Inoperative table does not apply to LNAV Cat D. For uncompensated Baro-VNAV systems, LNAV/VNAV NA below -15°C (5°F) or above 54°C (130°F). For inoperative ALSF-2, increase LNAV Cat C/D visibility to RVR 4500. DME/DME RNP-0.3 NA. Simultaneous approach authorized with ILS or LOC RWY 1R. LNAV procedure NA during simultaneous operations. Use of FD or AP providing RNAV track guidance required during simultaneous operations.

ALSF-2

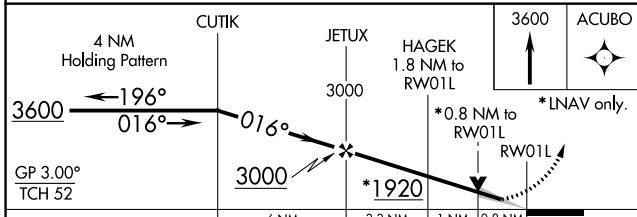
MISSED APPROACH: Climb to 3600 direct ACUBO and hold.

ATIS <b>125.15</b>	WICHITA APP CON <b>126.7 353.5</b>	WICHITA TOWER <b>118.2 257.8</b>	GND CON <b>121.9 348.6</b>	CLNC DEL <b>125.7</b>
-----------------------	---------------------------------------	-------------------------------------	-------------------------------	--------------------------



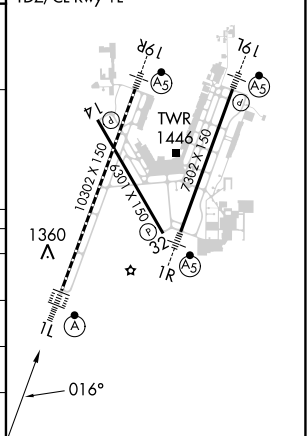
NC-2, 22 FEB 2024 to 21 MAR 2024

NC-2, 22 FEB 2024 to 21 MAR 2024



ELEV 1333	<b>D</b> TDZE 1314
HIRL all Rwys	
REIL Rwys 14 and 32	
TDZ/CL Rwy 1L	

CATEGORY	A	B	C	D
LPV DA		1514/18	200 (200-½)	
LNAV/VNAV DA		1615/24	301 (300-½)	
LNAV MDA		1620/24	306 (300-½)	
<b>C</b> CIRCLING	1800-1	467 (500-1)	1980-1¾ 647 (700-1¾)	1980-2 647 (700-2)



VORTAC ICT <b>113.8</b> Chan 85	APP CRS <b>119°</b>	Rwy Idg TDZE Apt Elev	<b>6301</b> <b>1333</b> <b>1333</b>
---------------------------------------	------------------------	-----------------------------	---

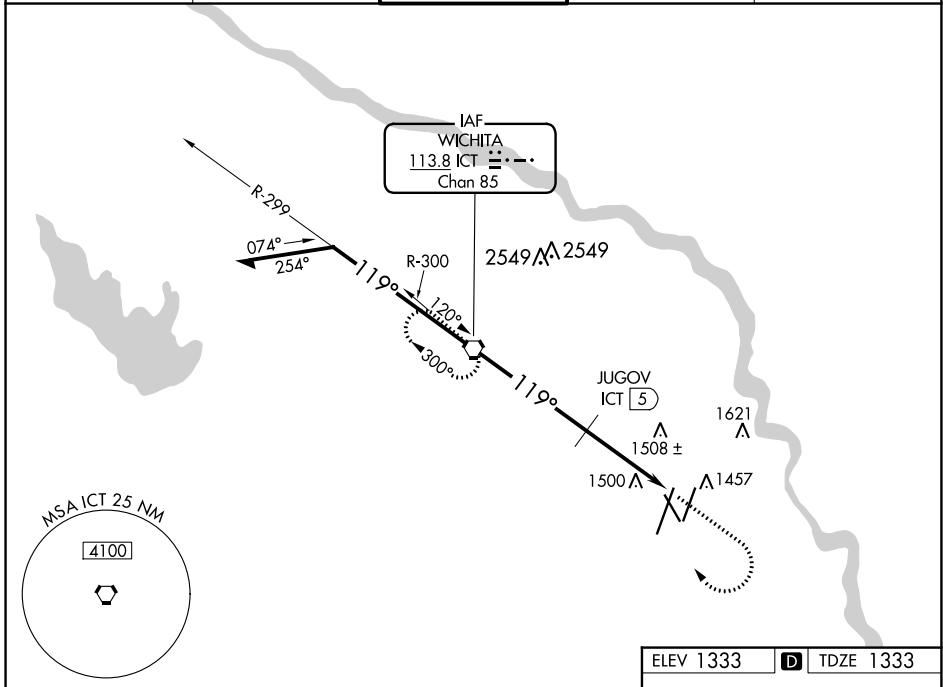
# VOR RWY 14

WICHITA DWIGHT D EISENHOWER NTL (ICT)

**▽**  
**▲**

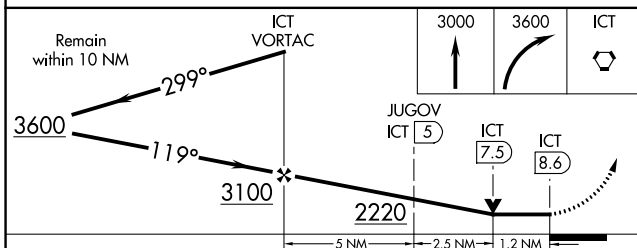
MISSED APPROACH: Climb to 3000 then climbing right turn to 3600 direct ICT VORTAC and hold.

ATIS <b>125.15</b>	WICHITA APP CON <b>126.7 353.5</b>	WICHITA TOWER <b>118.2 257.8</b>	GND CON <b>121.9 348.6</b>	CLNC DEL <b>125.7</b>
-----------------------	---------------------------------------	-------------------------------------	-------------------------------	--------------------------

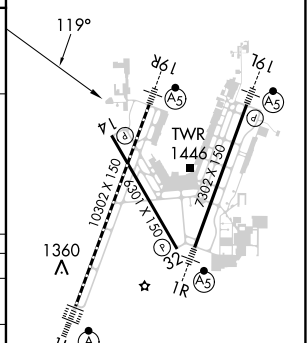


NC-2, 22 FEB 2024 to 21 MAR 2024

NC-2, 22 FEB 2024 to 21 MAR 2024



ELEV 1333	<b>D</b> TDZE 1333
-----------	--------------------



CATEGORY	A	B	C	D
S-14	2220-1¼ 887 (900-1¼)	2220-2½ 887 (900-2½)		
<b>C</b> CIRCLING	2220-1¼ 887 (900-1¼)	2220-2¾ 887 (900-2¾)	2220-3 887 (900-3)	
JUGOV FIX MINIMUMS				
S-14	1760-1 427 (500-1)	1760-1¼ 427 (500-1¼)		
<b>C</b> CIRCLING	1800-1 467 (500-1)	1980-1¾ 647 (700-1¾)	1980-2 647 (700-2)	

HIRL all Rwys  
REIL Rwys 14 and 32  
TDZ/CL Rwy 1L

FAF to MAP 8.6 NM					
Knots	60	90	120	150	180
Min:Sec	8:36	5:44	4:18	3:26	2:52