

CONRA TWO DEPARTURE  
(CONRA2, CONRA) 21JUL16

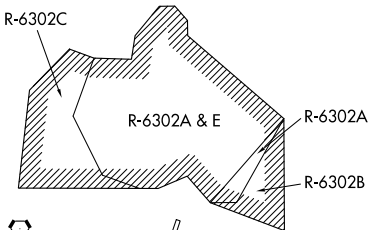
(CONRA2, CONRA) 21224  
CONRA TWO DEPARTURE

AWOS-3PT  
128.575  
CLNC DEL  
121.7  
CTAF  
122.7  
GRAY DEP CON  
120.075 323.15

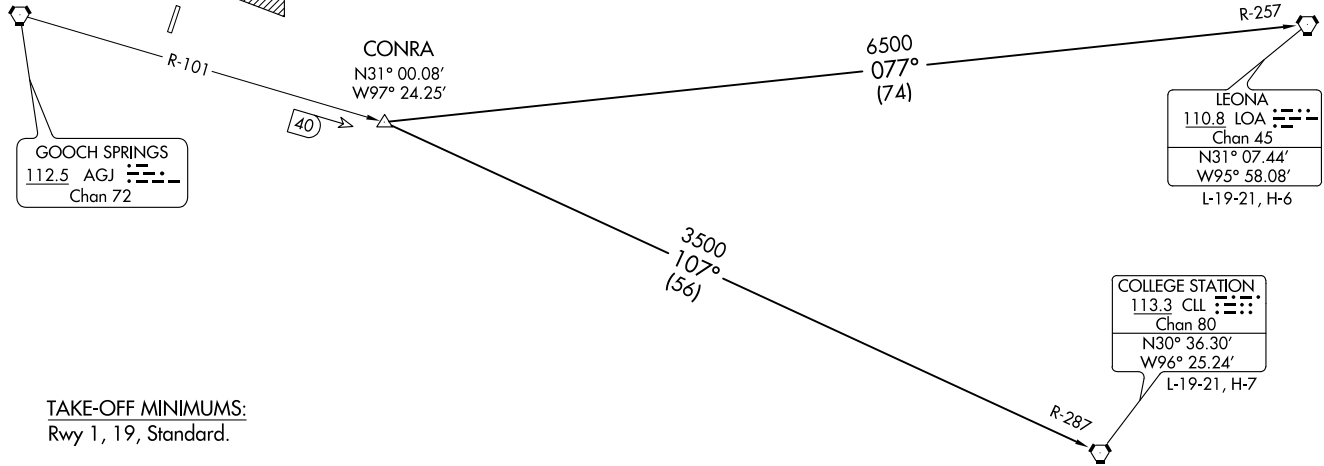
**TOP ALTITUDE:  
12000**



**DEPARTURE ROUTE DESCRIPTION**  
Climb on assigned heading for RADAR vectors to CONRA INT, maintain 3500. Thence . . . .  
. . . . (transition). Expect filed altitude 10 minutes after departure.  
COLLEGE STATION TRANSITION (CONRA2.CLL): From over CONRA INT via CLL R-287 to CLL VORTAC.  
LEONA TRANSITION (CONRA2.LOA): From over CONRA INT via LOA R-257 to LOA VORTAC.



NOTE: RADAR required.



GOOCH SPRINGS  
112.5 AGJ  
Chan 72

CONRA  
N31° 00.08'  
W97° 24.25'

6500  
077°  
(74)

LEONA  
110.8 LOA  
Chan 45  
N31° 07.44'  
W95° 58.08'  
L-19-21, H-6

3500  
107°  
(56)

COLLEGE STATION  
113.3 CLL  
Chan 80  
N30° 36.30'  
W96° 25.24'  
L-19-21, H-7

TAKE-OFF MINIMUMS:  
Rwy 1, 19, Standard.

NOTE: Chart not to scale.

KILLEEN, TEXAS  
SKYLARK FLD (11E)

SKYLARK FLD (11E)  
KILLEEN, TEXAS

AL-5344 (FAA)

# LAMPS SEVEN DEPARTURE

AWOS-3PT  
128.575  
GRAY DEP CON  
120.075 323.15  
CLNC DEL  
121.7

**TOP ALTITUDE:  
ASSIGNED BY ATC**

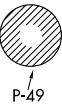
SONET  
N31° 42.75'  
W97° 36.29'

2700  
091°  
(17)

R-271

WACO  
115.3 ACT  
Chan 100  
N31° 39.74'  
W97° 16.14'  
L-19, H-6

3000  
036°  
(42)



R-6302C

R-6302D

R-6302A

R-6302B

GOOCH SPRINGS  
112.5 AGJ  
Chan 72  
N31° 11.13'  
W98° 08.51'

R-098

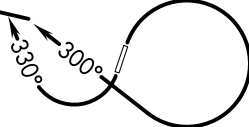
278°

3800  
\*3200  
202°  
(65)



R-018

STONEWALL  
113.8 STV  
Chan 85  
N30° 12.41'  
W98° 42.35'  
L-19, H-7



TAKEOFF MINIMUMS  
Rwys 1, 19: Standard.

NOTE: RADAR required.  
NOTE: WACO TRANSITION for aircraft inbound to terminal area airports.

NOTE: Chart not to scale.

## DEPARTURE ROUTE DESCRIPTION

TAKEOFF RUNWAY 1: Climbing right turn heading 300° (to assigned altitude) to intercept and proceed on AGJ R-098. Thence. . .

TAKEOFF RUNWAY 19: Climbing right turn heading 330° (to assigned altitude) to intercept and proceed on AGJ R-098. Thence. . .

. . . on (transition) or (assigned route).

STONEWALL TRANSITION (LAMP57.STV): From over AGJ VORTAC on AGJ R-202 and STV R-018 to STV VORTAC.

WACO TRANSITION (LAMP57.ACT): From over AGJ VORTAC on AGJ R-036 to SONET INT, then on ACT R-271 to ACT VORTAC.

# LAMPS SEVEN DEPARTURE

(LAMP57.AGJ) 10OCT19

SC-3, 27 JAN 2022 to 24 FEB 2022

SC-3, 27 JAN 2022 to 24 FEB 2022