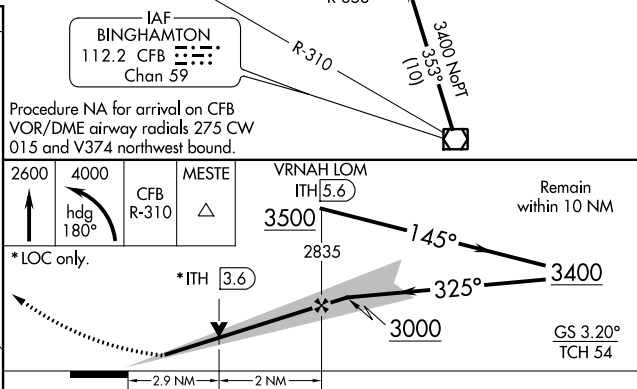
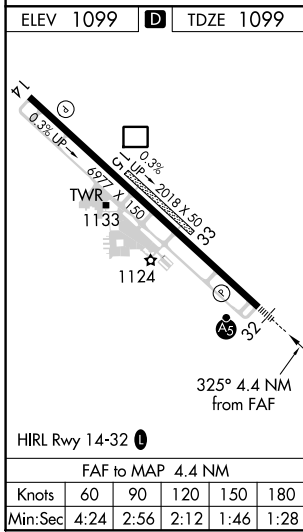
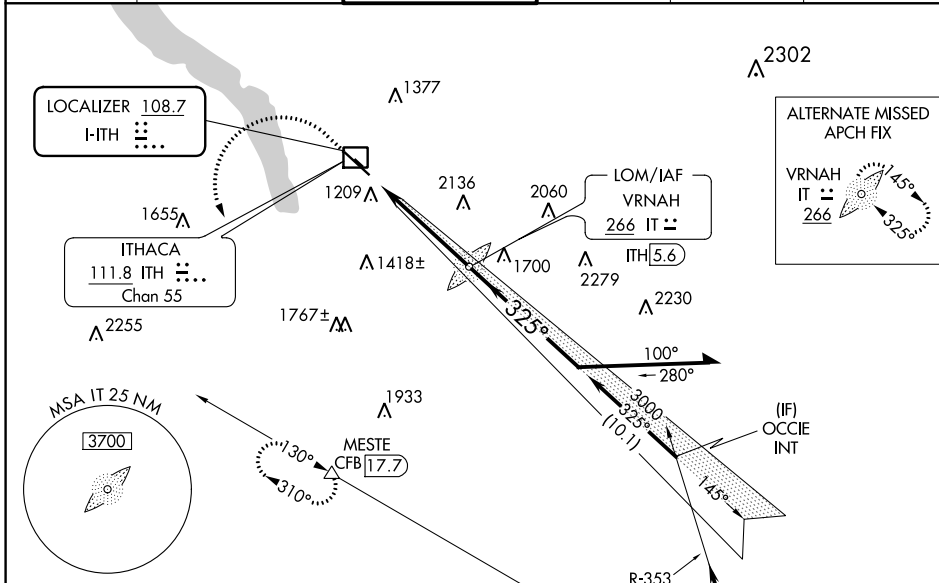


LOC I-ITH 108.7	APP CRS 325°	Rwy Idg TDZE Apt Elev	6602 1099 1099
---------------------------	------------------------	-----------------------------	---

ILS or LOC RWY 32

ITHACA TOMPKINS INTL (ITH)

DME required.		<p>MISSED APPROACH: Climb to 2600 then climbing left turn to 4000 on heading 180° and CFB VOR/DME R-310 to MESTE/CFB VOR/DME 17.7 DME and hold.</p>	
<p>ILS Circling NA to Rws 15 and 33. Inop table does not apply to S-ILS 32. When local altimeter setting not received, use Elmira altimeter setting and increase S-ILS 32 DA to 1433 feet and all MDA 100 feet; increase S-LOC 32 Cat C/D visibility 1/2 SM. DME from ITH DME. Simultaneous reception of I-ITH LOC and ITH DME required. For inop ALS when using Elmira altimeter setting increase S-ILS 32 all Cats visibility to RVR 5000.</p>		<p>MALSR AS</p>	
ATIS 125.175	ELMIRA APP CON * 124.3 257.8	ITHACA TOWER * 119.6 (CTAF) 0	GND CON 121.8
CLNC DEL 121.8		UNICOM 122.95	



CATEGORY	A	B	C	D
S-ILS 32	1349/40		250 (300-3/4)	
S-LOC 32	2140/40 1041 (1100-3/4)	2140/55 1041 (1100-1)	2140-2 1/2	1041 (1100-2 1/2)
C CIRCLING	2140-1 1/4 1041 (1100-1 1/4)	2140-1 1/2 1041 (1100-1 1/2)	2140-3 1041 (1100-3)	2440-3 1341 (1400-3)

WAAS CH 62815 W32A	APP CRS 325°	Rwy Idg 6602 TDZE 1099 Aprt Elev 1099
--	------------------------	--

RNAV (GPS) RWY 32

ITHACA TOMPKINS INTL (ITH)

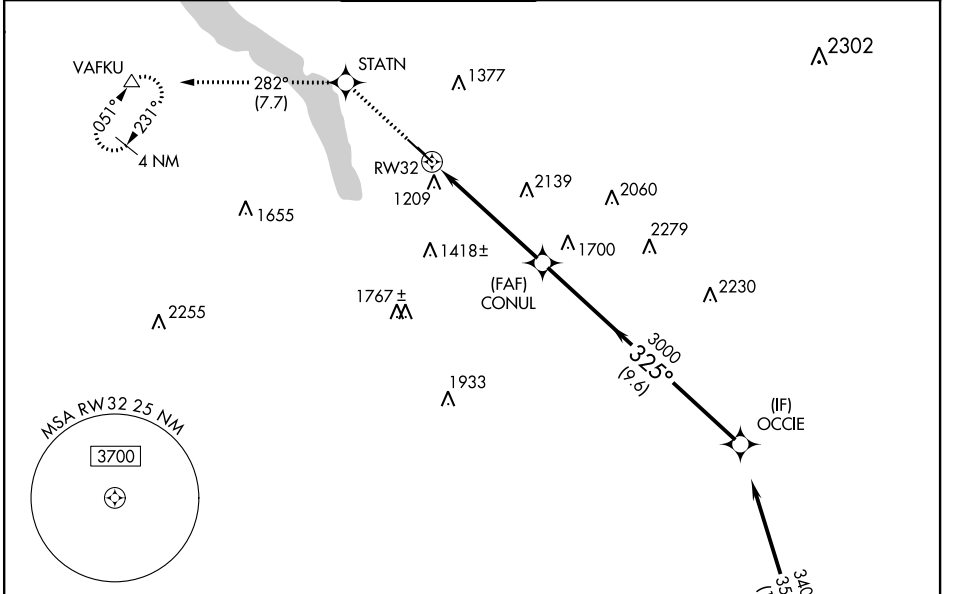
RNP APCH

▼ Circling NA to Rwy's 15 and 33. Inop table does not apply to LNAV Cat A. Rwy 32 helicopter visibility reduction below $\frac{3}{4}$ SM NA. When local altimeter setting not received, use Elmira altimeter setting and increase all DA 84 feet and all MDA 100 feet. For inop MALS, increase LNAV Cat B visibility $\frac{1}{4}$ mile. For inop MALS, when using Elmira altimeter setting, increase LPV all Cats visibility to RVR 6000, and increase LNAV Cat B visibility to $\frac{1}{2}$ mile.

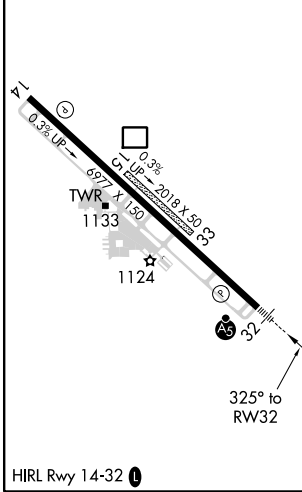
MALS
AS
STATN
IF OCCIE
IF BINGHAMTON CFB

MISSED APPROACH:
Climb to 3700 direct STATN and on track 282° to VAFKU and hold.

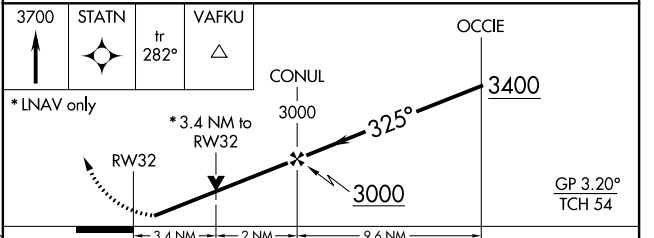
ATIS 125.175	ELMIRA APP CON ★ 124.3 257.8	ITHACA TOWER ★ 119.6 (CTAF) 0	GND CON 121.8	CUNCL DEL 121.8	UNICOM 122.95
------------------------	--	--	-------------------------	---------------------------	-------------------------



ELEV 1099	D	TDZE 1099
-----------	----------	-----------



Procedure NA for arrival on CFB VOR/DME airway radials 310 CW 015.



CATEGORY	A	B	C	D
LPV DA	1385/40		286 (300- $\frac{3}{4}$)	
LNAV MDA	2300/60 1201 (1300-1 $\frac{1}{4}$)		2300-2 $\frac{1}{2}$ 1201 (1300-2 $\frac{1}{2}$)	
C CIRCLING	2300-1 $\frac{1}{4}$ 1201 (1300-1 $\frac{1}{4}$)		2300-3 1341 (1400-3)	

NE-2, 02 DEC 2021 to 30 DEC 2021

NE-2, 02 DEC 2021 to 30 DEC 2021

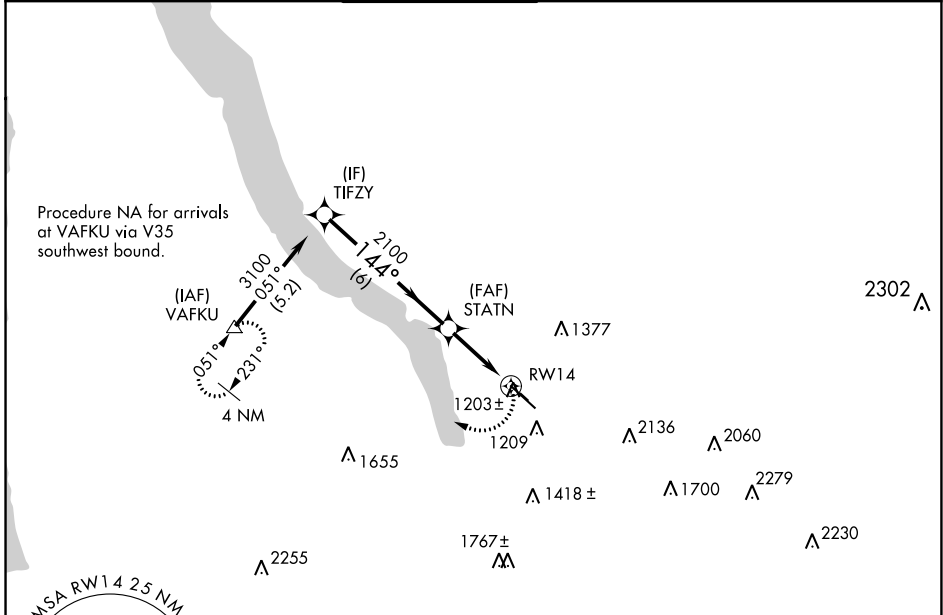
APP CRS 144°	Rwy Idg TDZE Apt Elev	6602 1083 1099
------------------------	-----------------------------	---

RNAV (GPS) Y RWY 14

ITHACA TOMPKINS INTL (ITH)

<p>-19°C</p>	<p>DME/DME RNP-0.3 NA. Helicopter visibility reduction below 3/4 SM NA. Circling NA to Rwys 15 and 33.</p>	<p>MISSED APPROACH: Climbing right turn to 3700 direct VAFKU and hold.</p>
--------------	--	--

ATIS 125.175	ELMIRA APP CON ★ 124.3 257.8	ITHACA TOWER ★ 119.6 (CTAF) 0	GND CON 121.8	CLNC DEL 121.8	UNICOM 122.95
------------------------	--	---	-------------------------	--------------------------	-------------------------



NE-2, 02 DEC 2021 to 30 DEC 2021

NE-2, 02 DEC 2021 to 30 DEC 2021



ELEV 1099	D	TDZE 1083
-----------	----------	-----------

Procedure Turn NA	6 NM	1.8 NM	1.2
-------------------	------	--------	-----

CATEGORY	A	B	C	D
LNVA MDA	1500-1	417 (500-1)	1500-1 1/4	417 (500-1 1/4)
C CIRCLING	2040-1 1/4	941 (1000-1 1/4)	2040-2 3/4	941 (1000-2 3/4)

HIRL Rwy 14-32 **0**

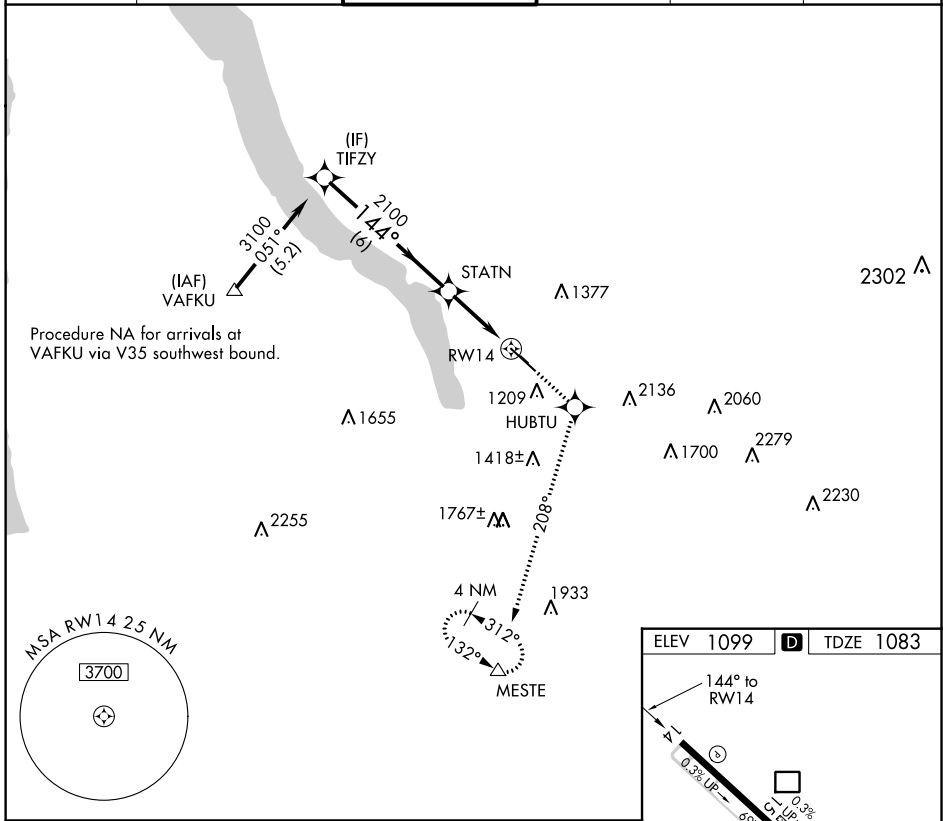
WAAS CH 50415 W14A	APP CRS 144°	Rwy Idg TDZE Apt Elev	6602 1083 1099
--	------------------------	-----------------------------	---

RNAV (GPS) Z RWY 14

ITHACA TOMPKINS INTL (ITH)

<p>▽ DME/DME RNP-0.3 NA. Visibility reduction by helicopters NA. When local altimeter setting not received, use Elmira altimeter setting and increase DA 84 feet and LPV all Cats visibility ¼ mile.</p> <p>⚠ MISSED APPROACH: Climb to 3800 direct HUBTU and via track 208° to MESTE and hold.</p>

ATIS 125.175	ELMIRA APP CON ★ 124.3 257.8	ITHACA TOWER ★ 119.6 (CTAF) 0	GND CON 121.8	CLNC DEL 121.8	UNICOM 122.95
------------------------	--	---	-------------------------	--------------------------	-------------------------



NE-2, 02 DEC 2021 to 30 DEC 2021

NE-2, 02 DEC 2021 to 30 DEC 2021

