

GARLAND FIVE DEPARTURE
(GARLS.TT) 25JAN24

(GARLS.TT) 24025

AL-9212 (FAA)

MID-WAY RGNL (JTWY)
MIDLOTHIAN/WAXAHACHIE, TEXAS

RADAR and DME required.

**TOP ALTITUDE:
ASSIGNED BY ATC**

REGIONAL DEP CON
125.2 343.65
CTAF
122.975

TAKEOFF MINIMUMS
Rwys 18, 36: Standard.

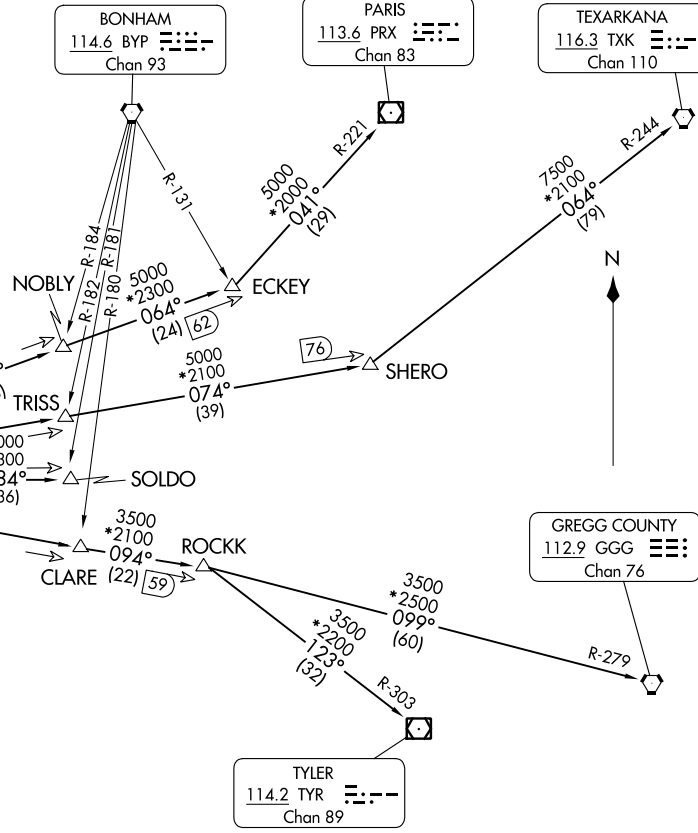
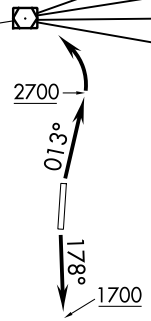
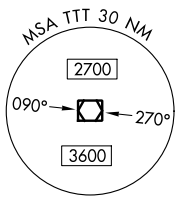
NOTE: SOLDO Transition: ATC assigned.

MAVERICK
113.1 TTT
Chan 78

BONHAM
114.6 BYP
Chan 93

PARIS
113.6 PRX
Chan 83

TEXARKANA
116.3 TXK
Chan 110



NOTE: Chart not to scale.

(CONTINUED ON FOLLOWING PAGE)

GARLAND FIVE DEPARTURE



DEPARTURE ROUTE DESCRIPTION

TAKEOFF RUNWAY 18: Climb on heading 178° to 1700 before proceeding northbound.

TAKEOFF RUNWAY 36: Climb on heading 013° to 2700 before turning left.

When entering controlled airspace, fly assigned heading for RADAR vectors to appropriate route. Maintain ATC assigned altitude.

GREGG COUNTY TRANSITION (GARL5.GGG): From over TTT VOR/DME on TTT R-094 to ROCKK, then on GGG R-279 to GGG VORTAC.

PARIS TRANSITION (GARL5.PRX): From over TTT VOR/DME on TTT R-064 to ECKEY, then on PRX R-221 to PRX VOR/DME.

SOLDO TRANSITION (GARL5.SOLDO): From over TTT VOR/DME on TTT R-084 to SOLDO.

TEXARKANA TRANSITION (GARL5.TXK): From over TTT VOR/DME on TTT R-074 to SHERO, then on TXK R-244 to TXK VORTAC.

TYLER TRANSITION (GARL5.TYR): From over TTT VOR/DME on TTT R-094 to ROCKK, then on TYR R-303 to TYR VOR/DME.

SC-2, 22 FEB 2024 to 21 MAR 2024

SC-2, 22 FEB 2024 to 21 MAR 2024

RADAR and DME required.

**TOP ALTITUDE:
ASSIGNED BY ATC**

REGIONAL DEP CON
125.2 343.65
CTAF
122.975

(KING4.TTT) 24053
KINGDOM FOUR DEPARTURE

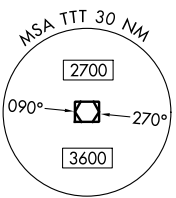
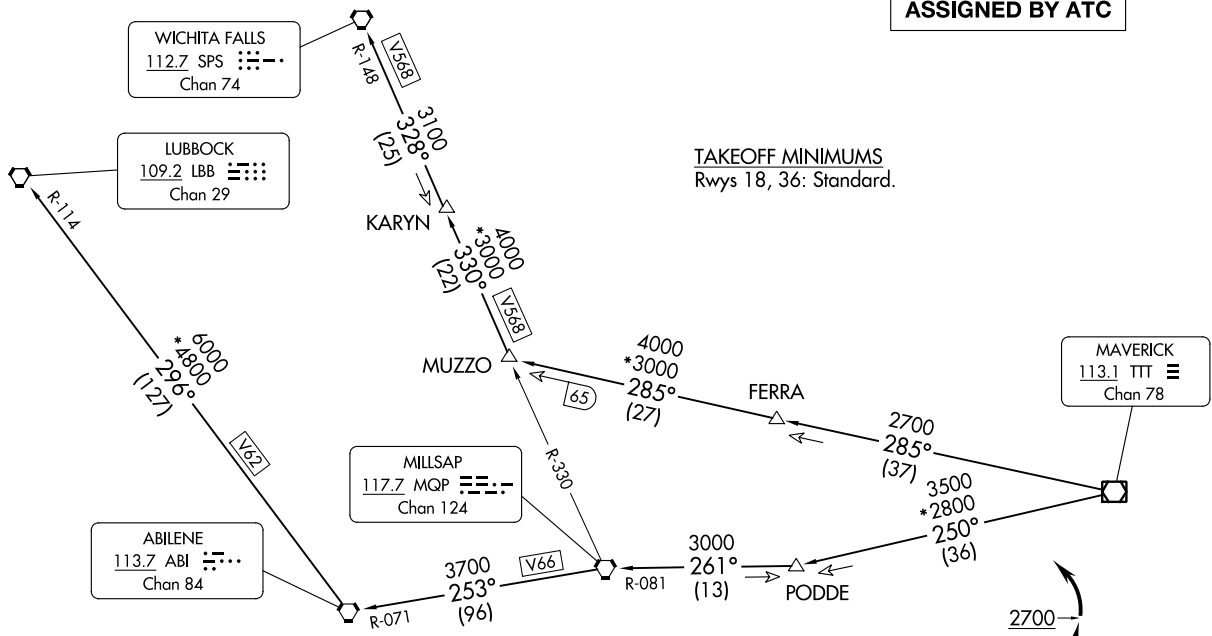
AL-9212 (FAA)

MID-WAY RGNL (JTY)
MIDLOTHIAN/WAXAHACHIE, TEXAS

TAKEOFF MINIMUMS
Rwys 18, 36: Standard.

KINGDOM FOUR DEPARTURE
(KING4.TTT) 25JAN24

MIDLOTHIAN/WAXAHACHIE, TEXAS
MID-WAY RGNL (JTY)



- NOTE: LUBBOCK Transition: For all aircraft overflying the MQP VORTAC westbound or direct.
- NOTE: MILLSAP Transition: For all aircraft overflying the MQP VORTAC westbound or direct.
- NOTE: PODDE Transition: ATC assigned.
- NOTE: WICHITA FALLS Transition: For all aircraft landing within the Wichita Falls terminal area or overflying the SPS VORTAC.
- NOTE: For all aircraft requesting 17000 and below.

NOTE: Chart not to scale.

(CONTINUED ON FOLLOWING PAGE)

KINGDOM FOUR DEPARTURE



DEPARTURE ROUTE DESCRIPTION

TAKEOFF RUNWAY 18: Climb on heading 178° to 1700 before proceeding northbound.

TAKEOFF RUNWAY 36: Climb on heading 013° to 2700 before turning left.

When entering controlled airspace, fly assigned heading for RADAR vectors to appropriate route. Maintain ATC assigned altitude.

LUBBOCK TRANSITION (KING4.LBB): From over TTT VOR/DME on TTT R-250 to PODDE, then on MQP R-081 to MQP VORTAC, then on MQP R-253 and ABI R-071 to ABI VORTAC, then on ABI R-296 and LBB R-114 to LBB VORTAC.

MILLSAP TRANSITION (KING4.MQP): From over TTT VOR/DME on TTT R-250 to PODDE, then on MQP R-081 to MQP VORTAC.

PODDE TRANSITION (KING4.PODDE): From over TTT VOR/DME on TTT R-250 to PODDE.

WICHITA FALLS TRANSITION (KING4.SPS): From over TTT VOR/DME on TTT R-285 to MUZZO, then on MQP R-330 and SPS R-148 to KARYN, then on SPS R-148 to SPS VORTAC.

SC-2, 22 FEB 2024 to 21 MAR 2024

SC-2, 22 FEB 2024 to 21 MAR 2024

**TOP ALTITUDE:
ASSIGNED BY ATC**

CTAF
122.975
REGIONAL DEP CON
125.2 343.65

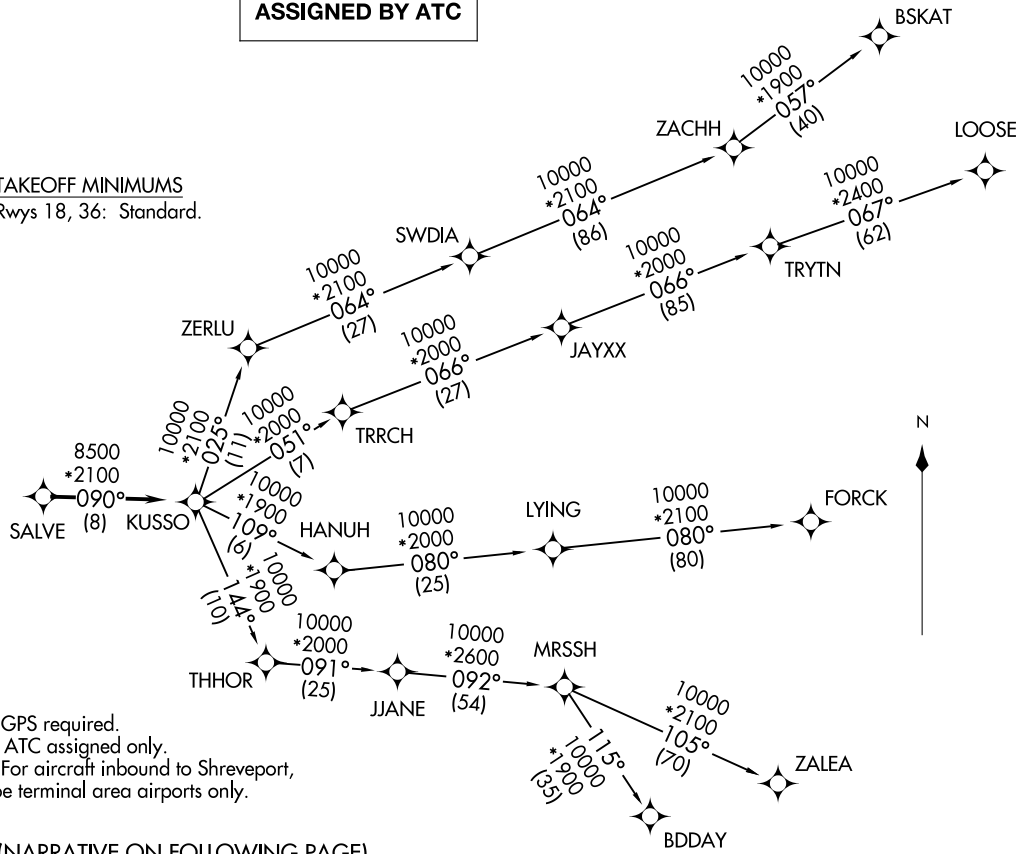
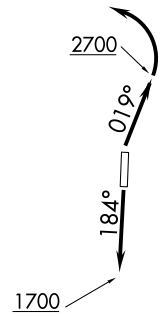
KUSSO ONE DEPARTURE (RNAV)
(KUSSO1 .KUSSO) 24MAR22

(KUSSO1 .KUSSO) 22083
KUSSO ONE DEPARTURE (RNAV)

AL-9212 (FAA)

MID-LOTHIAN/WAXAHACHIE, TEXAS
MID-WAY RGNL (JWY)

TAKEOFF MINIMUMS
Rwys 18, 36: Standard.



- NOTE: RADAR required.
- NOTE: RNAV 1.
- NOTE: DME/DME/IRU or GPS required.
- NOTE: BDDAY Transition: ATC assigned only.
- NOTE: MRSSH Transition: For aircraft inbound to Shreveport, Jackson and Monroe terminal area airports only.

(NARRATIVE ON FOLLOWING PAGE)

NOTE: Chart not to scale.

KUSSO ONE DEPARTURE (RNAV)



DEPARTURE ROUTE DESCRIPTION

TAKEOFF RUNWAY 18: Climb on heading 184° to 1700 before proceeding northbound.

TAKEOFF RUNWAY 36: Climb on heading 019° to 2700 before turning left.

When entering controlled airspace, fly heading assigned by ATC, expect vector to SALVE, then on track 090° to KUSSO, then on assigned transition. Maintain ATC assigned altitude, expect filed altitude 10 minutes after departure.

BDDAY TRANSITION (KUSSO1.BDDAY)

BSKAT TRANSITION (KUSSO1.BSKAT)

FORCK TRANSITION (KUSSO1.FORCK)

LOOSE TRANSITION (KUSSO1.LOOSE)

MRSSH TRANSITION (KUSSO1.MRSSH)

ZALEA TRANSITION (KUSSO1.ZALEA)

SC-2, 22 FEB 2024 to 21 MAR 2024

SC-2, 22 FEB 2024 to 21 MAR 2024

CTAF 122.975
 REGIONAL DEP CON 125.2 343.65

**TOP ALTITUDE:
 ASSIGNED BY ATC**

NOTE: RNAV 1.
 NOTE: DME/DME/IRU or GPS required.
 NOTE: RADAR required.
 NOTE: ALIAN Transition: ATC assigned only.

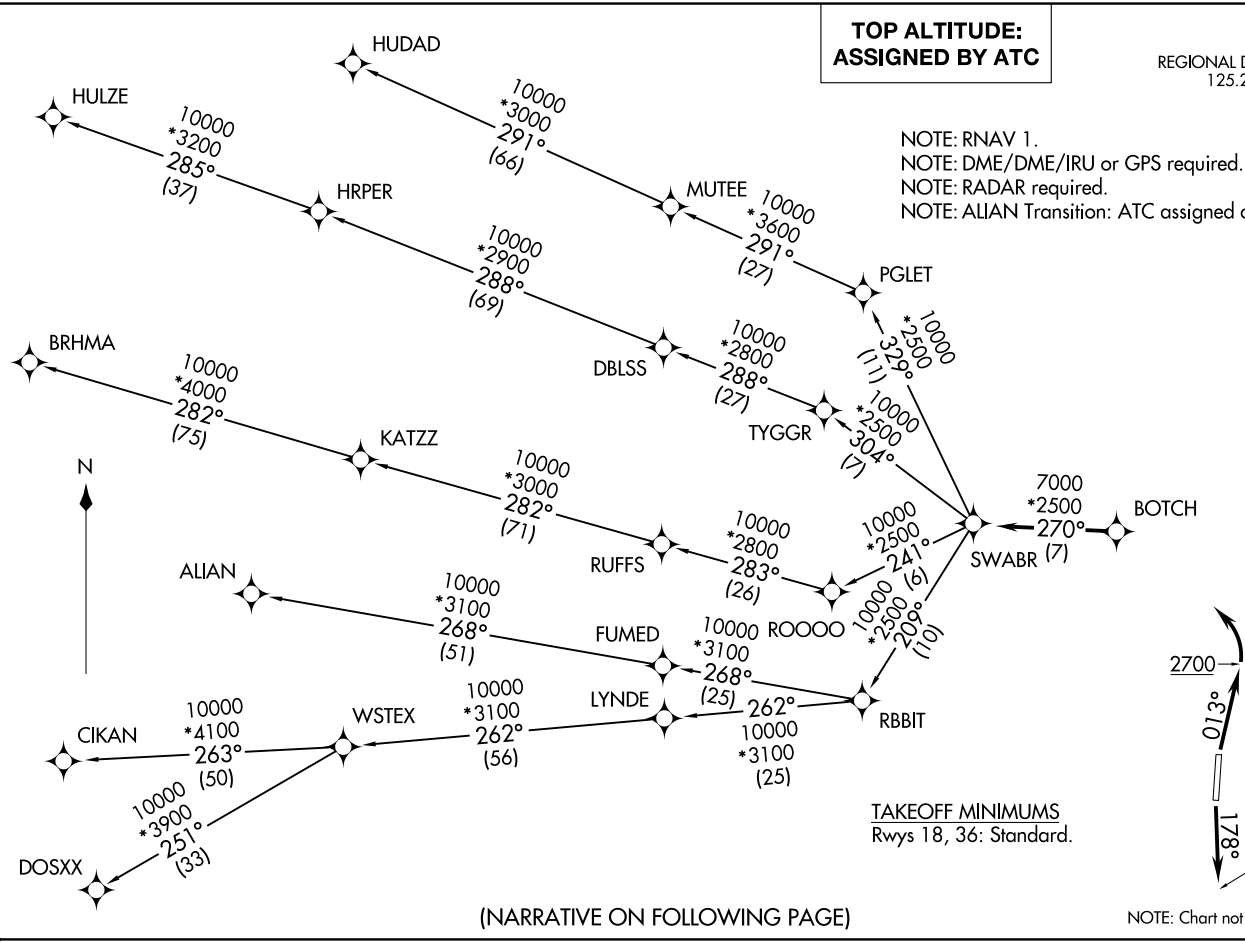
TAKEOFF MINIMUMS
 Rwy 18, 36: Standard.

NOTE: Chart not to scale.

SC-2, 22 FEB 2024 to 21 MAR 2024

SC-2, 22 FEB 2024 to 21 MAR 2024

(NARRATIVE ON FOLLOWING PAGE)



SWABR ONE DEPARTURE (RNAV)



DEPARTURE ROUTE DESCRIPTION

TAKEOFF RUNWAY 18: Climb on heading 178° to 1700 before proceeding northbound.
TAKEOFF RUNWAY 36: Climb on heading 013° to 2700 before turning left.

When entering controlled airspace, fly heading assigned by ATC, expect vectors to BOTCH, then on track 270° to SWABR, then on assigned transition. Maintain ATC assigned altitude, expect filed altitude 10 minutes after departure.

- ALIAN TRANSITION (SWABR1.ALIAN)
- BRHMA TRANSITION (SWABR1.BRHMA)
- CIKAN TRANSITION (SWABR1.CIKAN)
- DOSXX TRANSITION (SWABR1.DOSXX)
- HUDAD TRANSITION (SWABR1.HUDAD)
- HULZE TRANSITION (SWABR1.HULZE)
- WSTEX TRANSITION (SWABR1.WSTEX)

SC-2, 22 FEB 2024 to 21 MAR 2024

SC-2, 22 FEB 2024 to 21 MAR 2024