

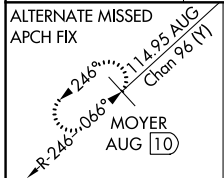
LOC I-LEW 108.9	APP CRS 041°	Rwy Idg TDZE Apt Elev	5001 270 288
---------------------------	------------------------	-----------------------------	---

ILS or LOC RWY 4

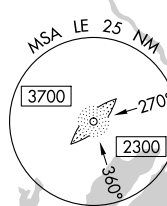
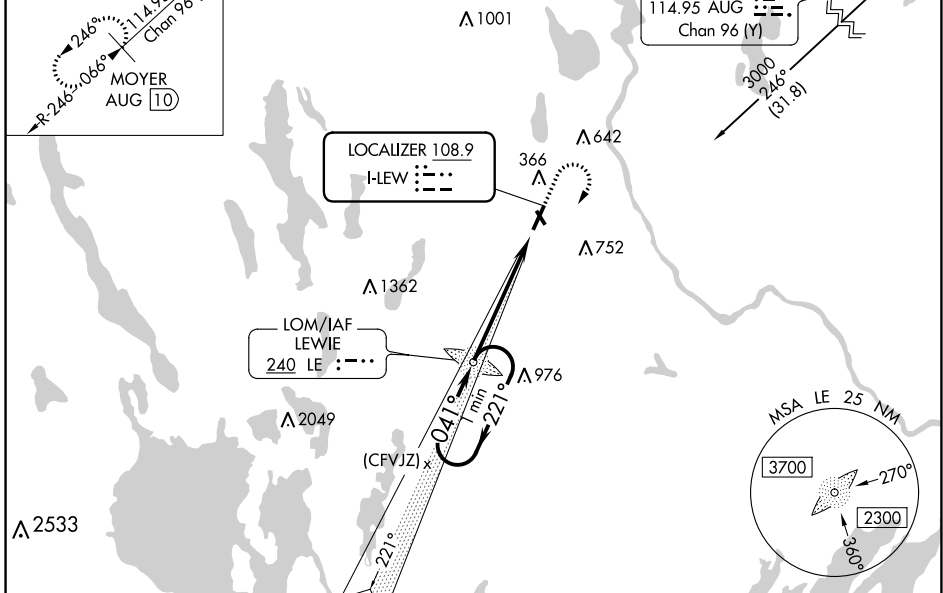
AUBURN/LEWISTON MUNI (LEW)

Circling to Rwy 17, 22, 35 NA at night. Rwy 4 helicopter visibility reduction below 3/4 SM NA. ADF required. For inop ALS, increase S-LOC 4 Cat A visibility to 1 SM, Cat C/D to 2 1/2 SM.	MALSR 	MISSED APPROACH: Climb to 900 then climbing right turn to 2300 direct LEWIE LOM and hold.

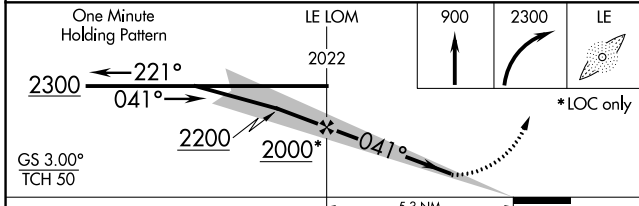
AWOS-3PT 118.025	PORTLAND APP CON ★ 125.5 353.9	PORTLAND CLNC DEL 124.05	UNICOM 122.8 (CTAF)
----------------------------	--	------------------------------------	-------------------------------



ADF REQUIRED



ELEV 288	TDZE 270
REIL Rwy 22	
HIRL Rwy 4-22	
MIRL Rwy 17-35	



FAF to MAP 5.3 NM

Knots	60	90	120	150	180
Min:Sec	5:18	3:32	2:39	2:07	1:46

CATEGORY	A	B	C	D
S-ILS 4		470-1/2	200 (200-1/2)	
S-LOC 4		1040-3/4	770 (800-3/4)	
CIRCLING	1040-1 752 (800-1)	1040-1 1/4 752 (800-1 1/4)	1060-2 1/2 772 (800-2 1/2)	1120-2 3/4 832 (900-2 3/4)

NE-1, 02 DEC 2021 to 30 DEC 2021

NE-1, 02 DEC 2021 to 30 DEC 2021

WAAS CH 78019 W22A	APP CRS 221°	Rwy ldg TDZE Apt Elev	5001 270 288
--	------------------------	-----------------------------	---

RNAV (GPS) RWY 22

AUBURN/LEWISTON MUNI (LEW)

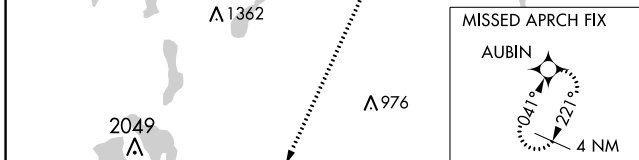
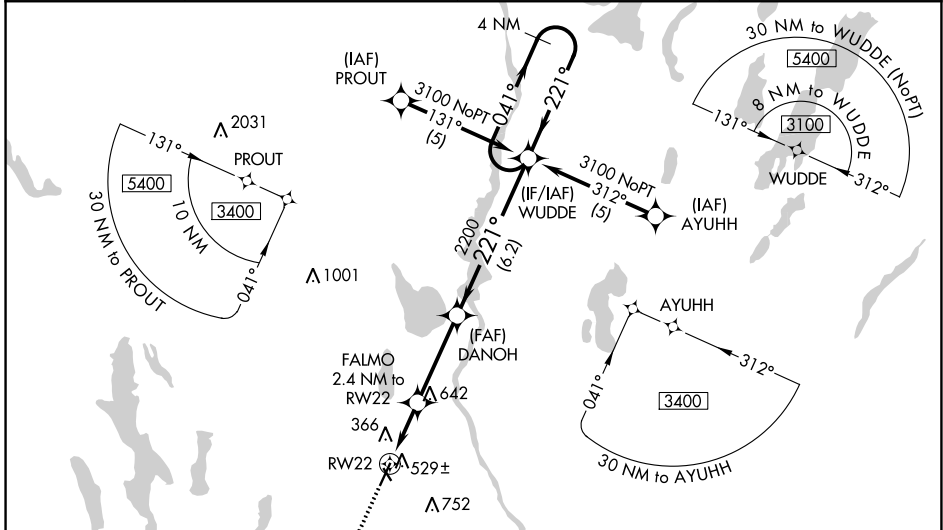
RNP APCH.

▼ Procedure NA at night. For uncompensated Baro-VNAV systems, LNAV/VNAV NA below -15°C or above 48°C. Rwy 22 helicopter visibility reduction below 1 SM NA.

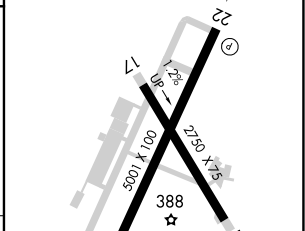
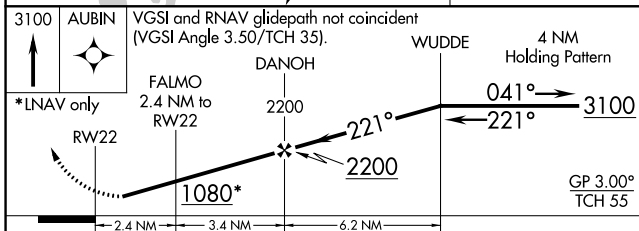
▲ When local altimeter setting not received, use Augusta altimeter setting: increase LPV all Cats DA to 617 feet and all Cats visibility ½ SM; LNAV/VNAV all Cats DA to 938 feet and all Cats visibility ½ SM; increase all MDA 80 feet and LNAV Cat C/D visibility ⅓ SM. Baro-VNAV NA when using Augusta altimeter setting.

MISSED APPROACH: Climb to 3100 direct AUBIN and hold.

AWOS-3PT 118.025	PORTLAND APP CON ★ 125.5 353.9	PORTLAND CLNC DEL 124.05	UNICOM 122.8 (CTAF) 0
----------------------------	--	------------------------------------	---------------------------------



ELEV 288	TDZE 270
----------	----------



CATEGORY	A	B	C	D
LPV DA		546-1	276 (300-1)	
LNAV/VNAV DA		867-2	597 (600-2)	
LNAV MDA	780-1	510 (500-1)	780-1 ⅓	510 (500-1 ⅓)

REIL Rwy 22 0
HIRL Rwy 4-22 0
MIRL Rwy 17-35 0

NE-1, 02 DEC 2021 to 30 DEC 2021

NE-1, 02 DEC 2021 to 30 DEC 2021

