

WAAS CH 93813 W26A	APP CRS 261°	Rwy Idg 6849 TDZE 4188 Apt Elev 4229
--	------------------------	---

RNAV (GPS) RWY 26

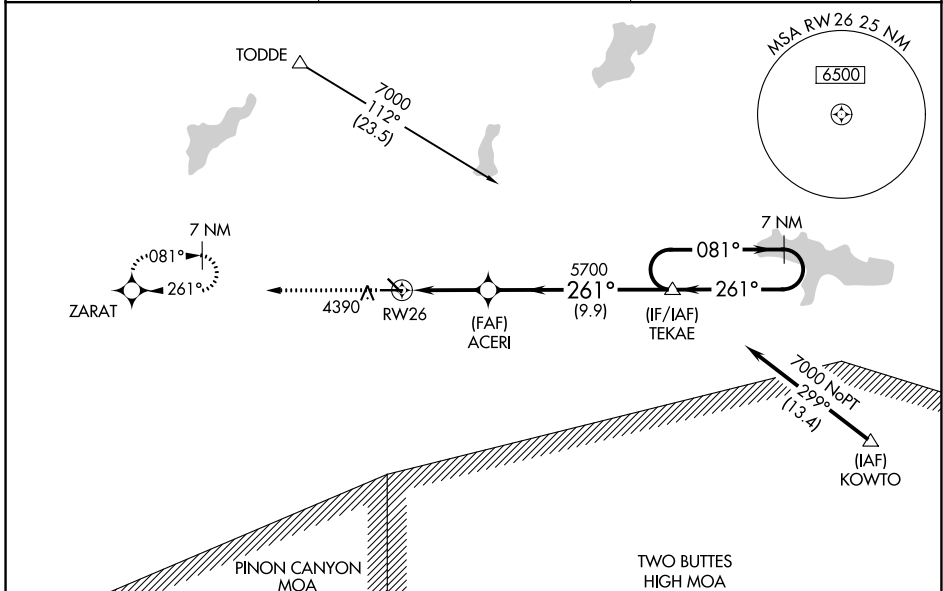
LA JUNTA MUNI (LHX)

RNP APCH - GPS.

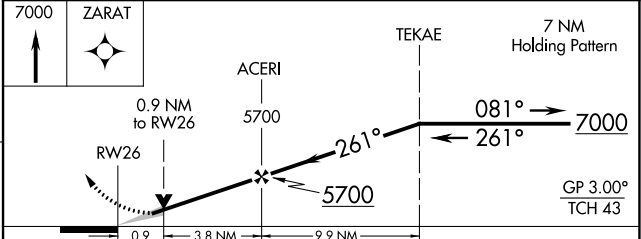
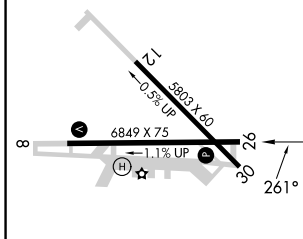
⚠ For uncompensated Baro-VNAV systems, LNAV/VNAV NA below -23°C or above 40°C. Baro-VNAV and VDP NA when using Lamar altimeter setting. When local altimeter setting not received, use Lamar altimeter setting; increase LPV and LNAV/VNAV DAs to 4604 feet and all visibilities $\frac{3}{8}$ SM; increase all MDAs 180 feet and visibility LNAV Cats C and D $\frac{1}{2}$ SM and Circling Cat C $\frac{1}{2}$ SM and Cat D $\frac{3}{4}$ SM. Circling Rwy 12, 30 NA at night.

MISSED APPROACH:
Climb to 7000 direct ZARAT and hold.

ASOS 135.525	DENVER CENTER 128.375 379.95	UNICOM 123.0 (CTAF) 0
------------------------	--	---------------------------------



ELEV 4229	TDZE 4188
------------------	------------------



CATEGORY	A	B	C	D
LPV DA	4438- $\frac{3}{4}$		250 (300- $\frac{3}{4}$)	
LNAV/VNAV DA	4438- $\frac{3}{4}$		250 (300- $\frac{3}{4}$)	
LNAV MDA	4480-1	292 (300-1)	4480- $\frac{7}{8}$	292 (300- $\frac{7}{8}$)
CIRCLING	4740-1	511 (600-1)	4740-1 $\frac{1}{2}$ 511 (600-1 $\frac{1}{2}$)	4860-2 631 (700-2)

SW-1, 22 FEB 2024 to 21 MAR 2024

SW-1, 22 FEB 2024 to 21 MAR 2024

WAAS CH 97613 W08A	APP CRS 081°	Rwy Idg 6849 TDZE 4229 Apt Elev 4229
--	------------------------	---

RNAV (GPS) RWY 8

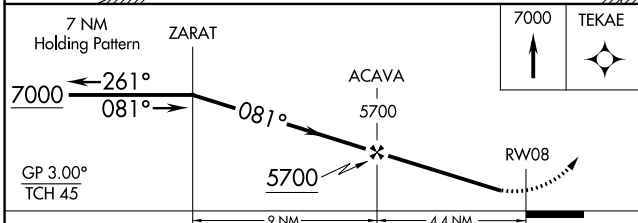
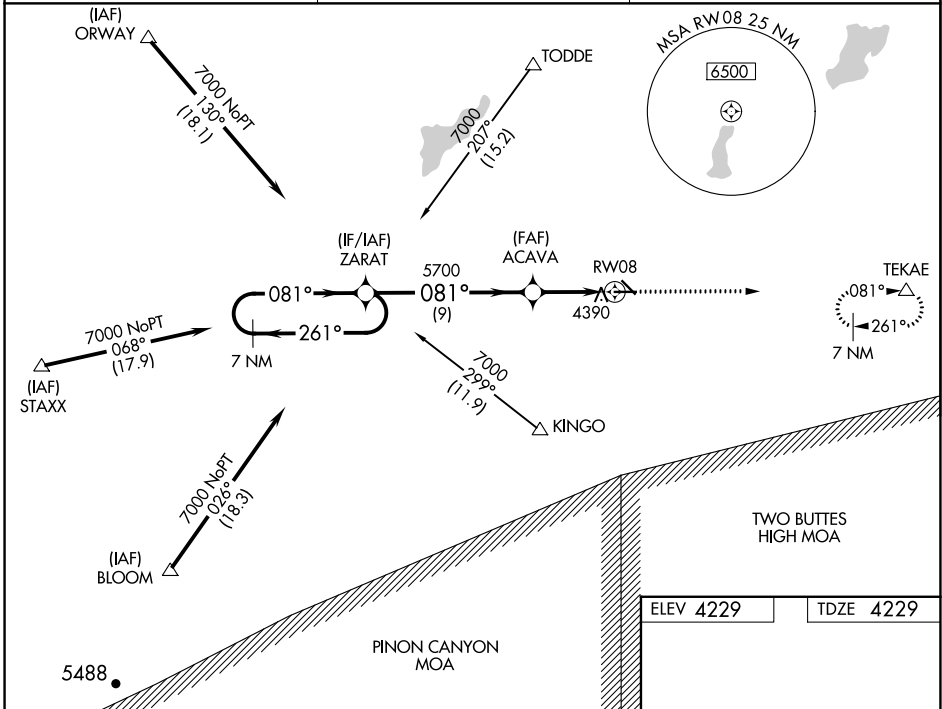
LA JUNTA MUNI (LHX)

RNP APCH - GPS.

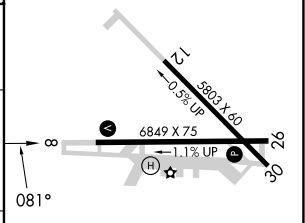
Baro-VNAV NA when using Lamar altimeter setting. For uncompensated Baro-VNAV systems, LNAV/VNAV NA below -23°C or above 40°C. When local altimeter setting not received, use Lamar altimeter setting; increase LPV DA to 4694 feet and all visibilities ½ SM; increase LNAV/VNAV DA to 4904 feet and all visibilities ½ SM; increase all MDAs 180 feet and visibility LNAV Cats C and D ½ SM and Circling Cat C ½ SM and Cat D ¾ SM. Circling Rwy 12, 30 NA at night.

MISSED APPROACH:
Climb to 7000 direct
TEKAE and hold.

ASOS 135.525	DENVER CENTER 128.375 379.95	UNICOM 123.0 (CTAF)
------------------------	--	-------------------------------



ELEV 4229	TDZE 4229
-----------	-----------



CATEGORY	A	B	C	D
LPV DA	4528-7/8		299 (300-7/8)	
LNAV/VNAV DA	4738-13/8		509 (600-13/8)	
LNAV MDA	4700-1 471 (500-1)		4700-13/8 471 (500-13/8)	
CIRCLING	4740-1 511 (600-1)		4740-1 1/2 511 (600-1 1/2) 4860-2 631 (700-2)	

REIL Rwy 8 and 26
MIRL Rwy 8-26

SW-1, 22 FEB 2024 to 21 MAR 2024

SW-1, 22 FEB 2024 to 21 MAR 2024