

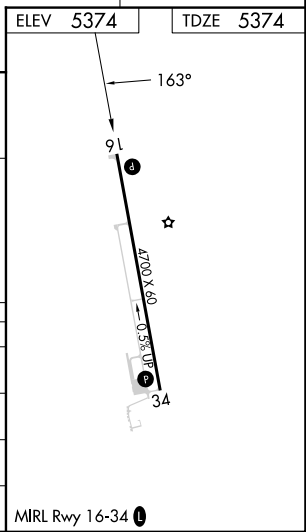
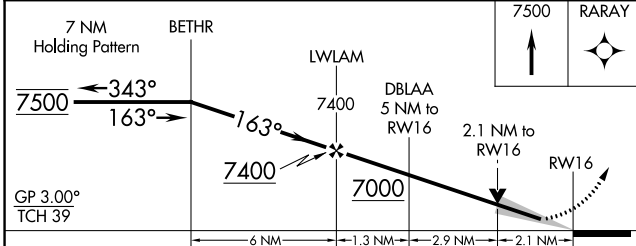
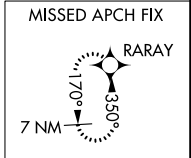
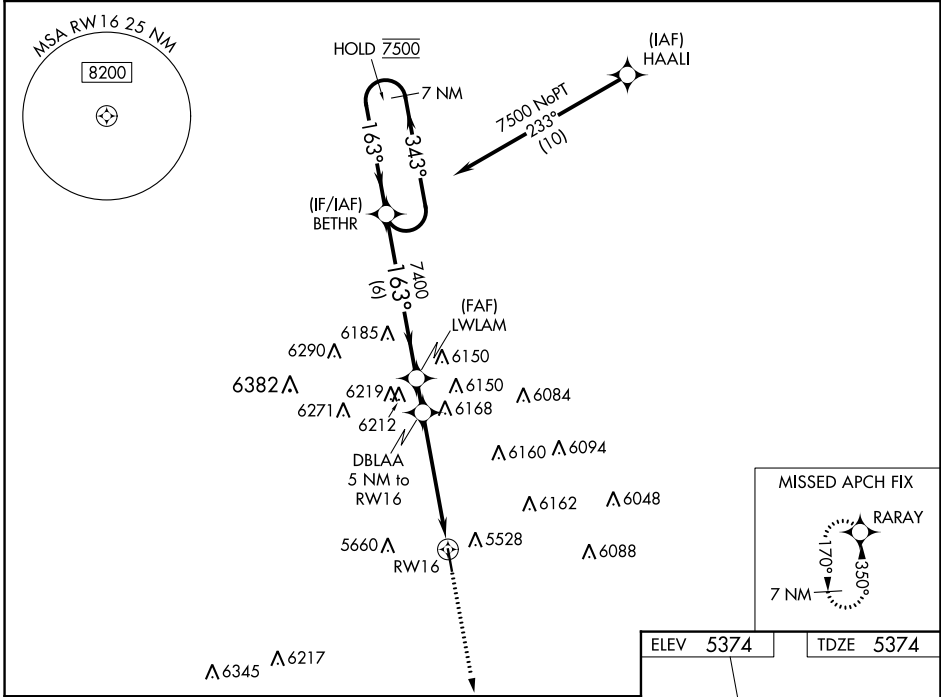
WAAS CH 56344 W16A	APP CRS 163°	Rwy Idg TDZE Apt Elev	4700 5374 5374
--	------------------------	-----------------------------	---

RNAV (GPS) RWY 16

LIMON MUNI (LIC)

RNP APCH - GPS.	MISSED APPROACH: Climb to 7500 direct RARAY and hold.
For uncompensated Baro-VNAV systems, LNAV/VNAV NA below -25°C or above 54°C.	

ASOS 121.125	DENVER CENTER 133.4 377.175	CTAF 122.9
------------------------	---------------------------------------	----------------------



CATEGORY	A	B	C	D
LPV DA	5624-3/4 250 (300-3/4)			NA
LNAV/VNAV DA	5709-1 335 (400-1)			NA
LNAV MDA	6080-1	706 (800-1)	6080-2 706 (800-2)	NA
CIRCLING	6080-1	706 (800-1)	6220-2 1/2 846 (900-2 1/2)	NA

SW-1, 18 MAY 2023 to 15 JUN 2023

SW-1, 18 MAY 2023 to 15 JUN 2023

WAAS CH 42744 W34A	APP CRS 343°	Rwy Idg TDZE 5365 Apt Elev 5374
--	------------------------	---

RNAV (GPS) RWY 34

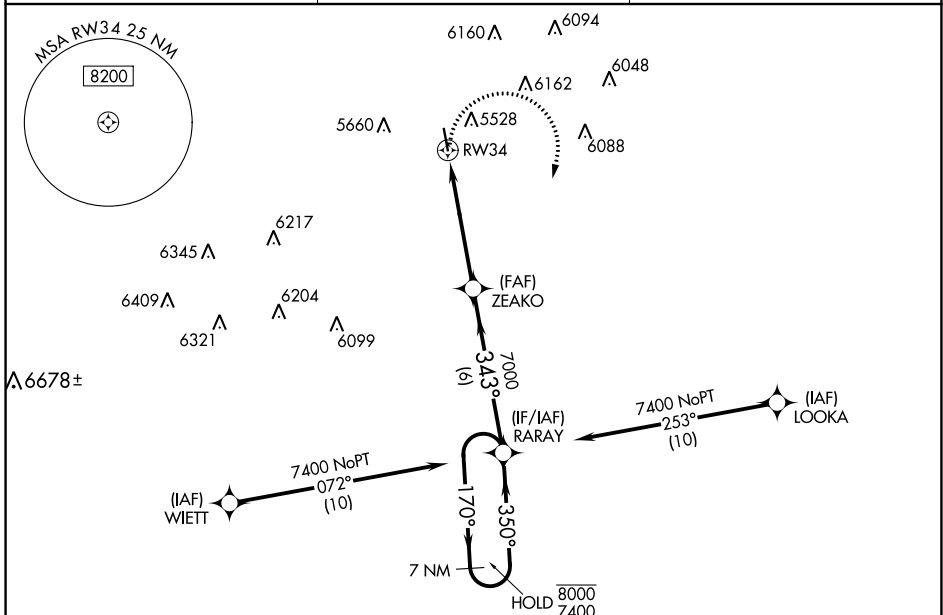
LIMON MUNI (LIC)

RNP APCH - GPS.

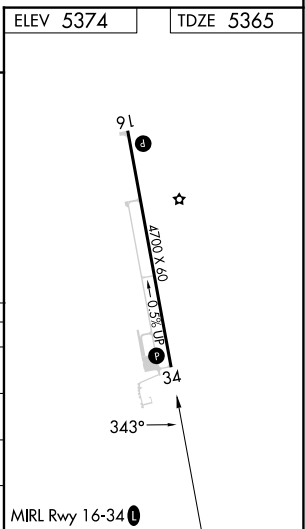
⚠ Rwy 34 helicopter visibility reduction below $\frac{3}{4}$ SM NA. For uncompensated Baro-VNAV systems, LNAV/VNAV NA below -25°C or above 54°C.

MISSED APPROACH: Climbing right turn to 7400 direct RARAY and hold.

ASOS 121.125	DENVER CENTER 133.4 377.175	CTAF 122.9 0
------------------------	---------------------------------------	------------------------



7400	RARAY	ZEAKO		RARAY		7 NM Holding Pattern
		1.9 NM to RW34	7000	343°	170°	8000
		1.9 NM	7000	343°	← 350°	7400
		3.2 NM	7000	7000		
		6 NM				
CATEGORY	A	B	C	D		
LPV DA	5615- $\frac{3}{4}$		250 (300- $\frac{3}{4}$)	NA		
LNAV/VNAV DA	5824- $1\frac{3}{8}$		459 (500- $1\frac{3}{8}$)	NA		
LNAV MDA	6000-1	635 (700-1)	6000- $1\frac{3}{4}$ 635 (700- $1\frac{3}{4}$)	NA		
C CIRCLING	6000-1	626 (700-1)	6220- $2\frac{1}{2}$ 846 (900- $2\frac{1}{2}$)	NA		



SW-1, 18 MAY 2023 to 15 JUN 2023

SW-1, 18 MAY 2023 to 15 JUN 2023