


LOC I-LWB <b>110.35</b>	APP CRS <b>045°</b>	Rwy Idg <b>7003</b>
		TDZE <b>2288</b>
		Apt Elev <b>2302</b>

# ILS or LOC RWY 4

## GREENBRIER VALLEY (LWB)

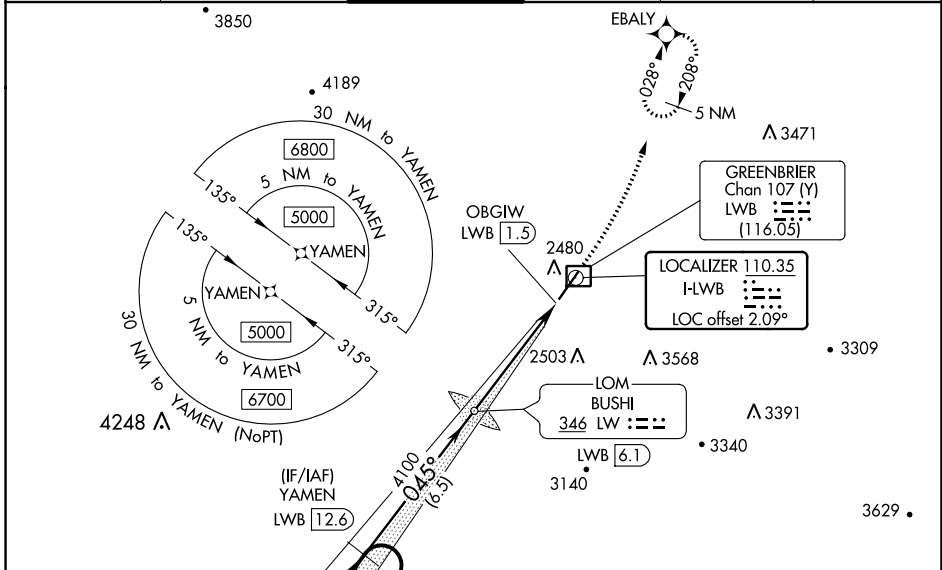
RNAV 1-GPS required.  
ADF or DME required for LOC only.

**⚠** Autopilot coupled approach NA below 2700. Rwy 4 helicopter visibility reduction below  $\frac{3}{4}$  SM NA. For inop ALS increase S-ILS 4 all Cats visibility to  $\frac{7}{8}$  SM, increase S-LOC 4 Cats A/B to  $1\frac{1}{8}$  SM.

MALSR 

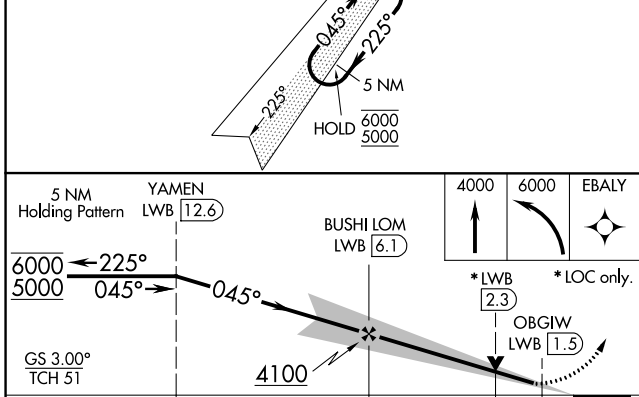
MISSED APPROACH: Climb to 4000 then climbing left turn to 6000 direct EBALY and hold, continue climb-in-hold to 6000.

ATIS ★ <b>121.4</b>	WASHINGTON CENTER <b>134.4 353.9</b>	LEWISBURG TOWER★ <b>118.9 (CTAF) 0</b>	GND CON <b>121.9</b>	CLNC DEL <b>125.725</b> (When twr closed)	UNICOM <b>122.95</b>
------------------------	-----------------------------------------	-------------------------------------------	-------------------------	-------------------------------------------------	-------------------------

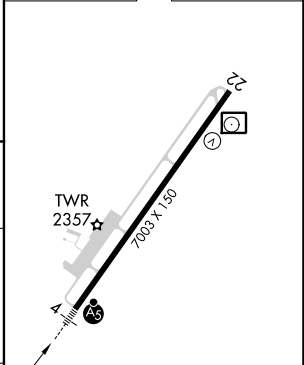


NE-4, 30 NOV 2023 to 28 DEC 2023

NE-4, 30 NOV 2023 to 28 DEC 2023



ELEV 2302	<b>D</b>	TDZE 2288
-----------	----------	-----------



CATEGORY	A	B	C	D
S-ILS 4		2559- $\frac{3}{4}$	271 (300- $\frac{3}{4}$ )	
S-LOC 4		2720- $\frac{3}{4}$	432 (500- $\frac{3}{4}$ )	
<b>C</b> CIRCLING	2840-1 538 (600-1)	3040-1 738 (800-1)	3280-3 978 (1000-3)	3680-3 1378 (1400-3)

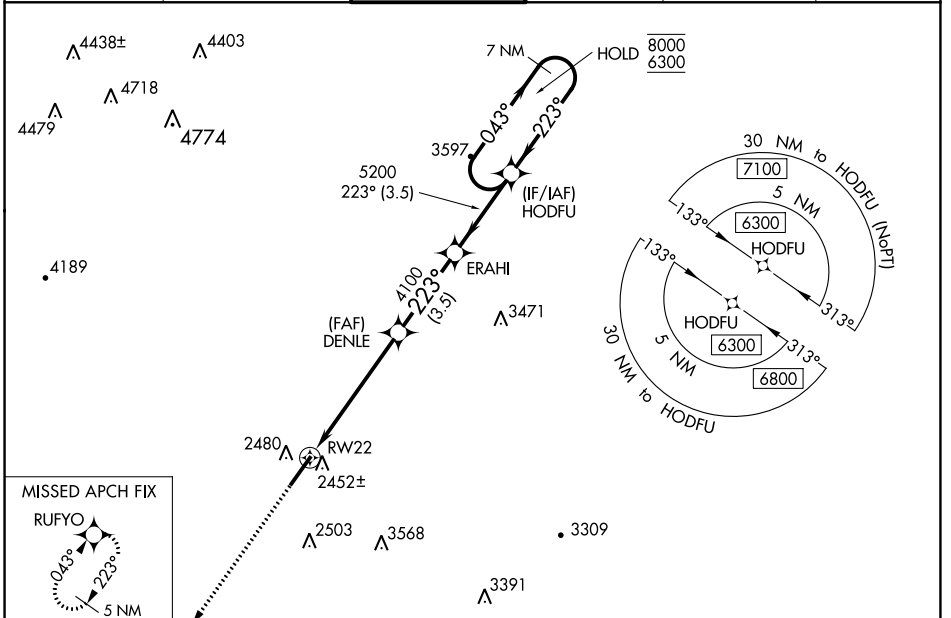
REIL Rwy 22 <b>1</b>	
HIRL Rwy 4-22 <b>1</b>	
FAF to MAP 4.6 NM	
Knots	60 90 120 150 180
Min:Sec	4:36 3:04 2:18 1:50 1:32

WAAS CH <b>99441</b> <b>W22A</b>	APP CRS <b>223°</b>	Rwy Idg TDZE Apt Elev	<b>7003</b> <b>2302</b> <b>2302</b>
----------------------------------------	------------------------	-----------------------------	-------------------------------------------

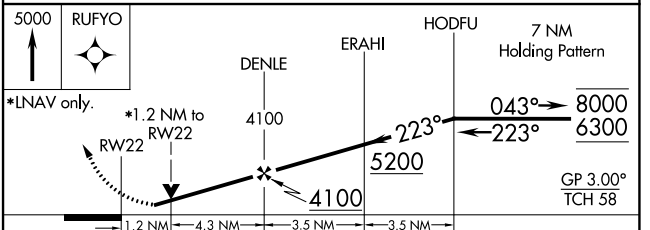
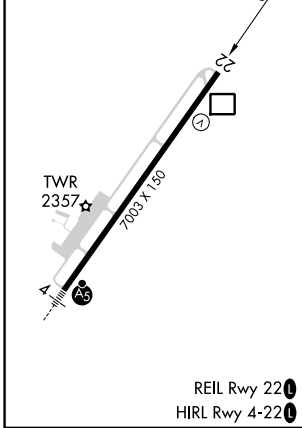
# RNAV (GPS) RWY 22

GREENBRIER VALLEY (LWB)

RNP APCH.		LEWISBURG TOWER★		GND CON	CLNC DEL	UNICOM
Rwy 22 helicopter visibility reduction below 3/4 SM NA. For uncompensated Baro-VNAV systems, LNAV/VNAV NA below -19°C or above 52°C.		<b>118.9</b> (CTAF)		<b>121.9</b>	<b>125.725</b> (When twr closed)	<b>122.95</b>
ATIS★	WASHINGTON CENTER					
<b>121.4</b>	<b>134.4 353.9</b>					



ELEV 2302		TDZE 2302
-----------	--	-----------



CATEGORY	A	B	C	D
LPV DA		2614-7/8	312 (400-7/8)	
LNAV/VNAV DA		2723-1/4	421 (500-1/4)	
LNAV MDA	2720-1	418 (500-1)	2720-1/8	418 (500-1/8)
CIRCLING	2840-1 538 (600-1)	3040-1 738 (800-1)	3280-3 978 (1000-3)	3580-3 1278 (1300-3)

NE-4, 30 NOV 2023 to 28 DEC 2023

NE-4, 30 NOV 2023 to 28 DEC 2023

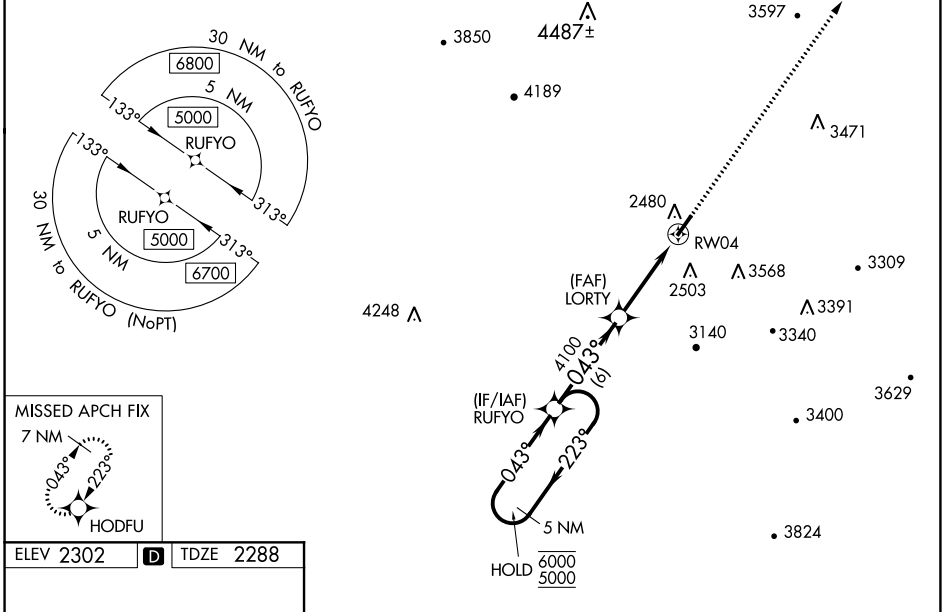
WAAS CH <b>42613</b> <b>W04A</b>	APP CRS <b>043°</b>	Rwy Idg TDZE Apt Elev	<b>7003</b> <b>2288</b> <b>2302</b>
----------------------------------------	------------------------	-----------------------------	-------------------------------------------

# RNAV (GPS) RWY 4

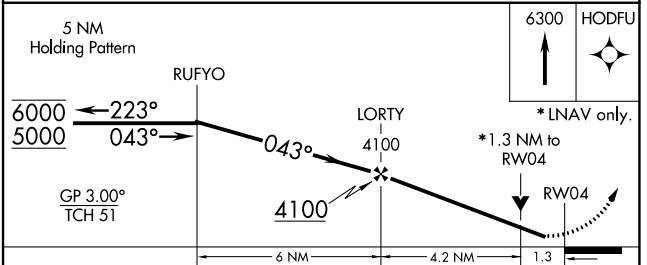
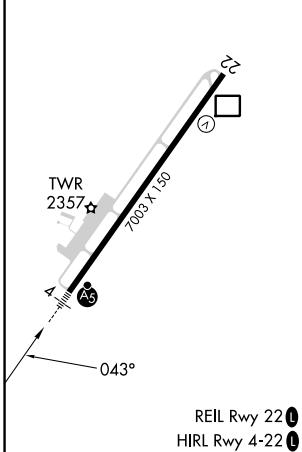
GREENBRIER VALLEY (LWB)

RNP APCH.	<p><b>▽</b> Rwy 4 helicopter visibility reduction below ¾ NA.                  For uncompensated Baro-VNAV systems, LNAV/VNAV NA below -19°C or above 54°C.                  For inop ALS, increase LNAV Cats A/B visibilities to 1 SM, Cats C/D to 1½ SM, and increase LPV all Cats visibilities to ¾ SM.</p>	<p>MALSR</p>	<p>MISSED APPROACH:                  Climb to 6300 direct HODFU and hold, continue climb-in-hold to 6300.</p>
<p><b>▽</b></p>			

ATIS★ <b>121.4</b>	WASHINGTON CENTER <b>134.4 353.9</b>	LEWISBURG TOWER★ <b>118.9 (CTAF) 0</b>	GND CON <b>121.9</b>	CLNC DEL <b>125.725</b> (When twr closed)	UNICOM <b>122.95</b>
-----------------------	-----------------------------------------	-------------------------------------------	-------------------------	-------------------------------------------------	-------------------------



ELEV 2302	<b>D</b>	TDZE 2288
-----------	----------	-----------



CATEGORY	A	B	C	D
LPV DA		2559-¾	271 (300-¾)	
LNAV/VNAV DA		2738-⅞	450 (500-⅞)	
LNAV MDA	2760-¾	472 (500-¾)	2760-1	472 (500-1)
<b>CIRCLING</b>	2840-1 538 (600-1)	3040-1 738 (800-1)	3280-3 978 (1000-3)	3680-3 1378 (1400-3)

NE-4, 30 NOV 2023 to 28 DEC 2023

NE-4, 30 NOV 2023 to 28 DEC 2023