

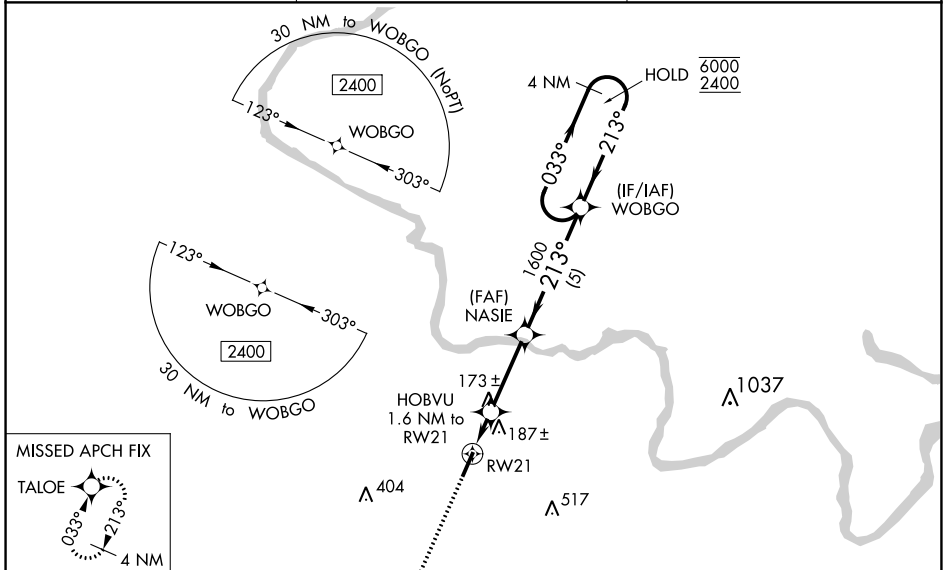
WAAS CH 86237 W21A	APP CRS 213°	Rwy Idg TDZE Apt Elev	5000 75 75
--	------------------------	-----------------------------	---------------------------------------

RNAV (GPS) RWY 21

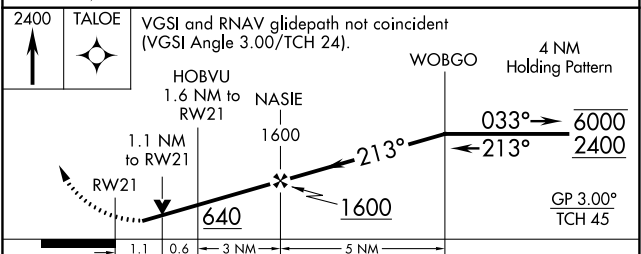
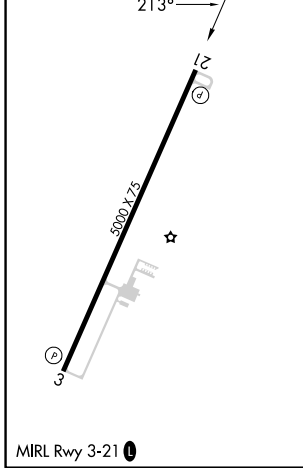
MARTIN COUNTY (MCZ)

RNP APCH - GPS.		MISSED APPROACH: Climb to 2400 direct TALOE and hold, continue climb-in-hold to 2400.
▽	Circling Rwy 3 NA at night. For uncompensated Baro-VNAV systems, LNAV/VNAV NA below -15°C or above 54°C.	

AWOS-3P 118.65	WASHINGTON CENTER 123.85 279.65	UNICOM 122.8 (CTAF) 0
--------------------------	---	---------------------------------



ELEV 75	TDZE 75
---------	---------



CATEGORY	A	B	C	D
LPV DA		383-1	308 (400-1)	
LNAV/VNAV DA		343-1	268 (300-1)	
LNAV MDA		440-1	365 (400-1)	
C CIRCLING	500-1 425 (500-1)	540-1 465 (500-1)	680-1 ³ / ₄ 605 (700-1 ³ / ₄)	880-2 ¹ / ₂ 805 (900-2 ¹ / ₂)

SE-2, 22 FEB 2024 to 21 MAR 2024

SE-2, 22 FEB 2024 to 21 MAR 2024

APP CRS	Rwy Idg	5000
033°	TDZE	75
	Apt Elev	75

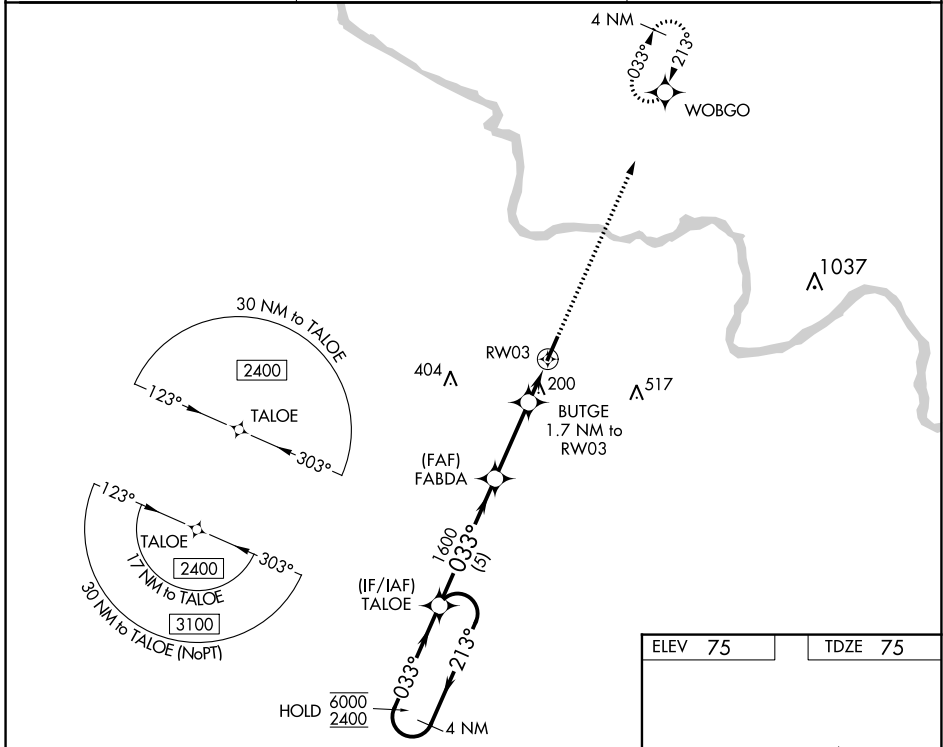
RNAV (GPS) RWY 3

MARTIN COUNTY (MCZ)

RNP APCH - GPS.
 ⚠ Rwy 3 helicopter visibility reduction below 1 SM NA.
 ⚠ Straight-in Rwy 3 NA at night, Circling Rwy 3 NA at night.

MISSED APPROACH: Climb to 3500 direct WOBGO and hold, continue climb-in-hold to 3500.

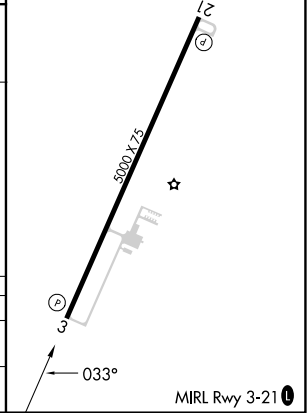
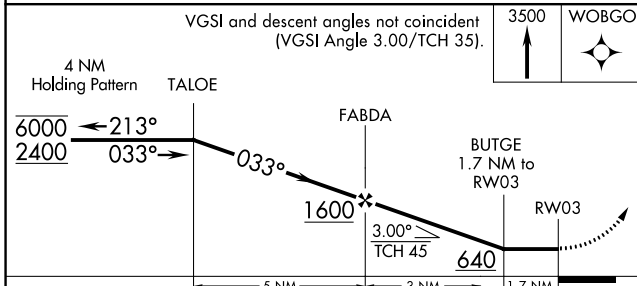
AWOS-3P 118.65	WASHINGTON CENTER 123.85 279.65	UNICOM 122.8 (CTAF) 0
--------------------------	---	---------------------------------



SE-2, 22 FEB 2024 to 21 MAR 2024

SE-2, 22 FEB 2024 to 21 MAR 2024

ELEV 75	TDZE 75
---------	---------



CATEGORY	A	B	C	D
LNVA MDA	460-1	385 (400-1)	460-1½	385 (400-1½)
C CIRCLING	500-1 425 (500-1)	540-1 465 (500-1)	680-1¾ 605 (700-1¾)	880-2½ 805 (900-2½)