

WAAS CH <b>73032</b> <b>W10A</b>	APP CRS <b>099°</b>	Rwy Idg TDZE <b>1179</b> Apt Elev <b>1182</b>
--	------------------------	---

# RNAV (GPS) RWY 10

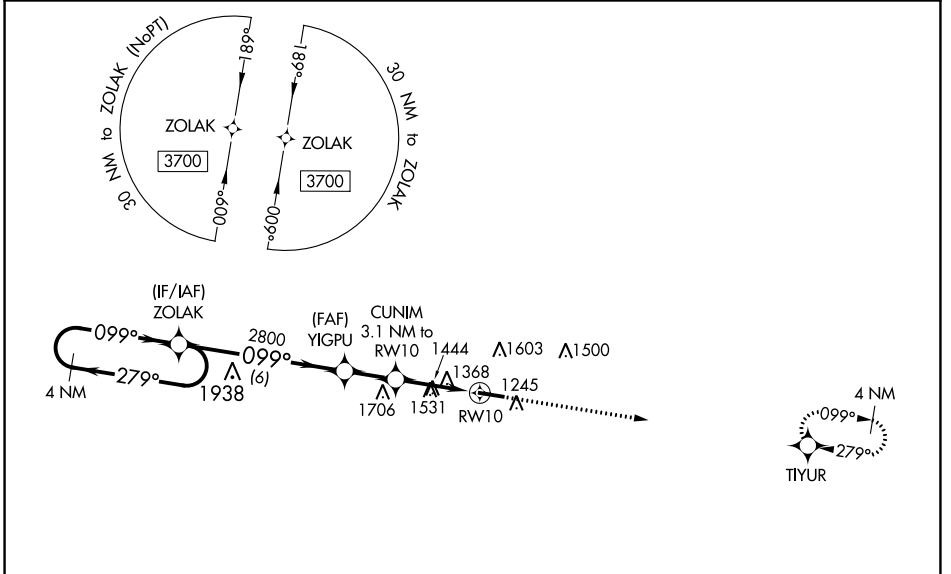
MOUNTAIN VIEW (MNF)

RNP APCH - GPS.

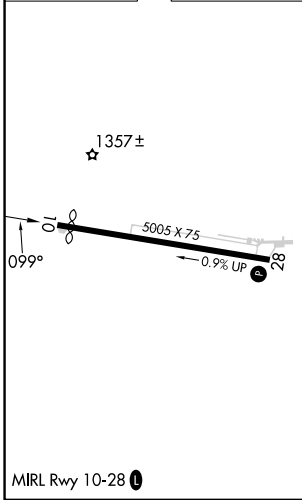
▼ Procedure NA at night. Rwy 10 helicopter visibility reduction below 1 SM  
 ▲ NA NA. Use West Plains altimeter setting, when not received, use Fort Leonard Wood altimeter setting and increase all MDA 80 feet; increase LP Cats C and D visibility ¼ mile, increase LNAV Cat B visibility ¼ mile, LNAV Cats C and D visibility ⅓ mile, and increase Circling Cats B and C visibility ¼ mile.

MISSED APPROACH: Climb to 3700 direct TIYUR and hold.

UNO ASOS <b>123.825</b>	KANSAS CITY CENTER <b>128.35 284.675</b>	UNICOM <b>122.8 (CTAF) 0</b>
----------------------------	---	---------------------------------



ELEV 1182	TDZE 1179
-----------	-----------



Visual Segment - Obstacles.			
Obstacle	Altitude	Distance	Heading
ZOLAK	3700	4 NM Holding Pattern	099°
YIGPU	2800	6 NM	099°
CUNIM	2200	1.9 NM	099°
RW10	2200	3.1 NM	099°

Obstacle	Altitude	Distance	Heading
TIYUR	3700	4 NM	099°

CATEGORY	A	B	C	D
LP MDA	1780-1	601 (600-1)	1780-1¾	601 (600-1¾)
LNAV MDA	1820-1	641 (700-1)	1820-1⅞	641 (700-1⅞)
CIRCLING	1880-1 698 (700-1)	2080-1¼ 898 (900-1¼)	2080-2¾ 898 (900-2¾)	2180-3 998 (1000-3)

NC-3, 22 FEB 2024 to 21 MAR 2024

NC-3, 22 FEB 2024 to 21 MAR 2024

WAAS CH <b>63232</b> <b>W28A</b>	APP CRS <b>279°</b>	Rwy Idg TDZE Apt Elev	<b>5005</b> <b>1162</b> <b>1182</b>
--	------------------------	-----------------------------	---

# RNAV (GPS) RWY 28

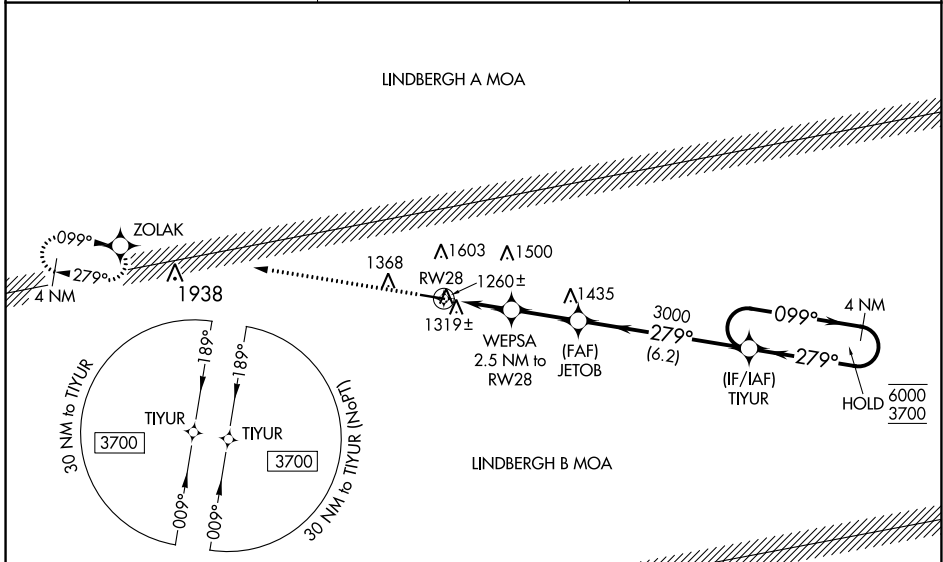
MOUNTAIN VIEW (MNF)

RNP APCH - GPS.

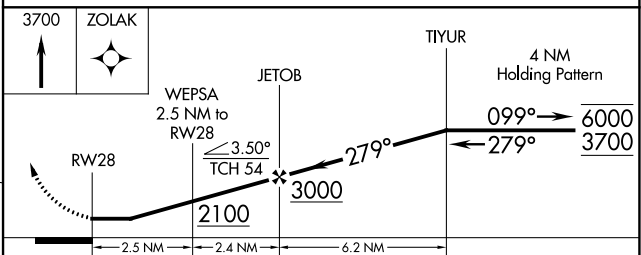
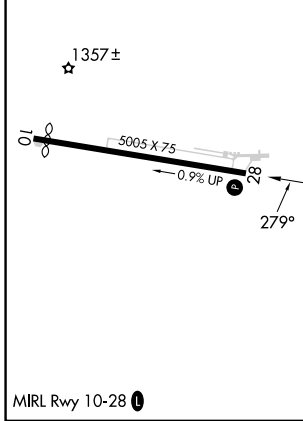
**NA** Circling Rwy 10 NA at night. Rwy 28 helicopter visibility reduction below 1 SM NA. Use West Plains altimeter setting; when not received, use Fort Leonard Wood altimeter setting and increase all MDA 100 feet; increase LP Cat C/D visibility ¼ SM, LNAV Cat C/D visibility ¼ SM and Circling Cat B/C visibility ¼ SM. Straight-in Rwy 28 NA at night, Circling Rwy 28 NA at night, operational VGSI required, remain on or above VGSI glidepath until threshold.

MISSED APPROACH: Climb to 3700 direct ZOLAK and hold.

UNO ASOS <b>123.825</b>	KANSAS CITY CENTER <b>128.35 284.675</b>	UNICOM <b>122.8 (CTAF)</b>
----------------------------	---	-------------------------------



ELEV 1182	TDZE 1162
-----------	-----------



CATEGORY	A	B	C	D
LP MDA	1560-1	398 (400-1)	1560-1½	398 (400-1½)
LNAV MDA	1620-1	458 (500-1)	1620-1¾	458 (500-1¾)
CIRCLING	1880-1 698 (700-1)	2080-1¼ 898 (900-1¼)	2080-2¾ 898 (900-2¾)	2180-3 998 (1000-3)

NC-3, 22 FEB 2024 to 21 MAR 2024

NC-3, 22 FEB 2024 to 21 MAR 2024