


ILS RWY 15 (SA CAT I & II)

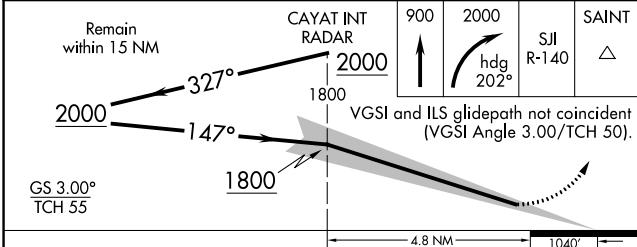
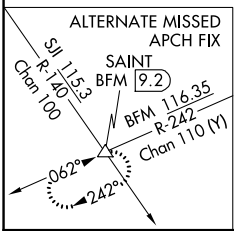
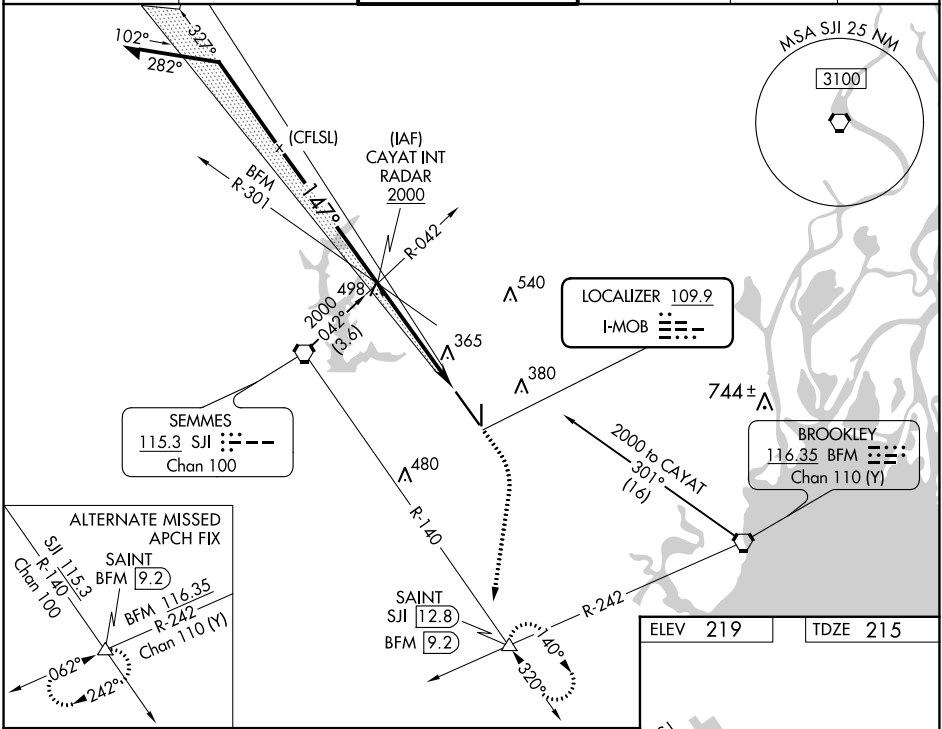
MOBILE RGNL (MOB)

LOC I-MOB 109.9	APP CRS 147°	Rwy Idg 8502
		TDZE 215
		Apt Elev 219

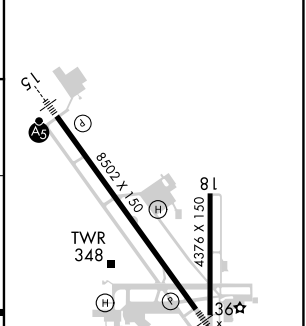
⚠ Procedure NA when tower closed.
⚠ SA CAT I: Requires specific OPSPEC, MSPEC, or LOA approval and use of HUD to DH.
⚠ ASR SA CAT II: Reduced Lighting: Requires specific OPSPEC, MSPEC, or LOA approval and use of autoland or HUD to touchdown.

MALSR 
MISSED APPROACH: Climb to 900 then climbing right turn to 2000 on heading 202° then on SJI VORTAC R-140 to SAINT/SJI 12.8 DME and hold.

ATIS 124.75 257.85	MOBILE APP CON ★ 118.5 269.3	MOBILE TOWER ★ 118.3 (CTAF) 239.0	GND CON 121.9 348.6	CLNC DEL 119.85	UNICOM 122.95
------------------------------	--	---	-------------------------------	---------------------------	-------------------------



ELEV 219	TDZE 215
----------	----------



CATEGORY	A	B	C	D
S-ILS 15	SA CAT I	RA 171/14	150 DA 365	
S-ILS 15	SA CAT II	RA 109/12	100 DA 315	

SA CATEGORY I & II ILS - SPECIAL AIRCREW & AIRCRAFT CERTIFICATION REQUIRED

MIRL Rwy 18-36
HIRL Rwy 15-33

SE-4, 22 FEB 2024 to 21 MAR 2024

SE-4, 22 FEB 2024 to 21 MAR 2024

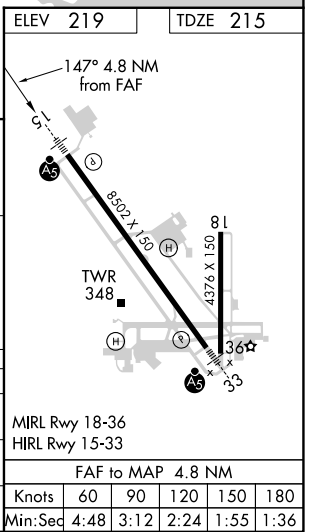
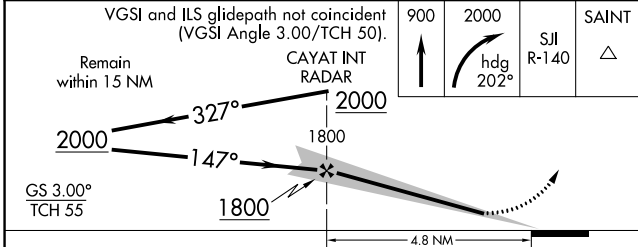
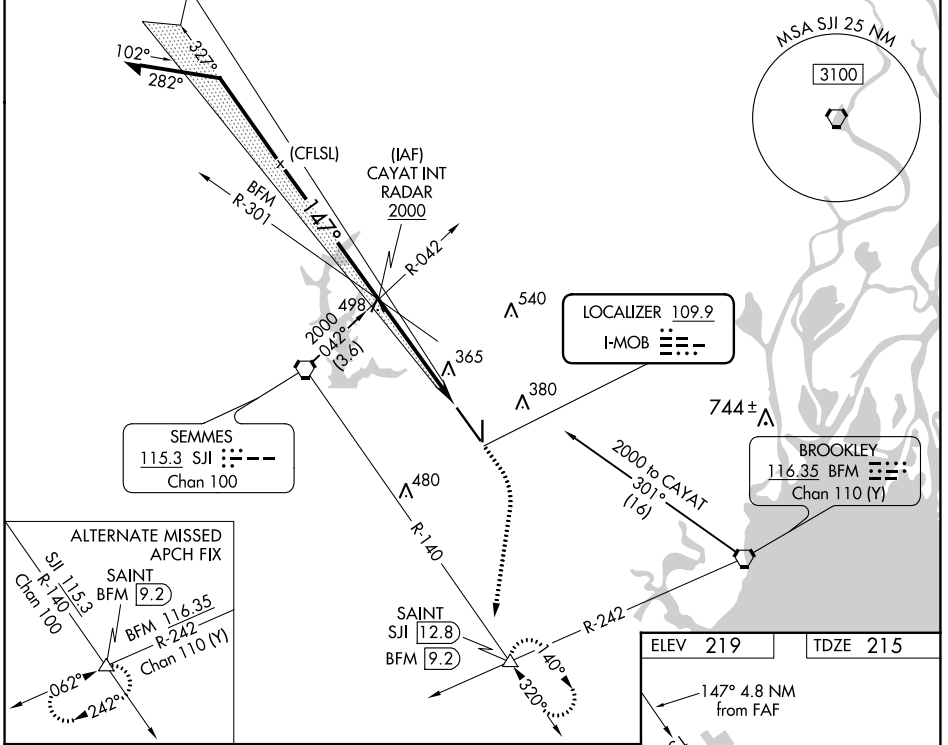
LOC I-MOB 109.9	APP CRS 147°	Rwy Idg 8502
		TDZE 215
		Apt Elev 219

ILS or LOC RWY 15

MOBILE RGNL (MOB)

<p>⚠ For inop ALS, increase S-ILS 15 Cat E visibility to RVR 4000 and S-LOC 15 Cats C/D/E visibility to 1½ mile.</p> <p>⚠ ASR *RVR 1800 authorized with use of FD or AP or HUD to DA.</p>	<p>MALSR</p>	<p>MISSED APPROACH: Climb to 900 then climbing right turn to 2000 on heading 202° then on SJI VORTAC R-140 to SAINT/SJI 12.8 DME and hold.</p>
---	---------------------	---

ATIS 124.75 257.85	MOBILE APP CON ★ 118.5 269.3	MOBILE TOWER ★ 118.3 (CTAF) 0 239.0	GND CON 121.9 348.6	CLNC DEL 119.85	UNICOM 122.95
------------------------------	--	---	-------------------------------	---------------------------	-------------------------



CATEGORY	A	B	C	D	E
S-ILS 15*	415/24 200 (200-½)				
S-LOC 15	700/24	485 (500-½)	700/50		485 (500-1)
C CIRCLING	700-1½	481 (500-1½)	740-1½ 521 (600-1½)	780-2 561 (600-2)	NA

SE-4, 22 FEB 2024 to 21 MAR 2024

SE-4, 22 FEB 2024 to 21 MAR 2024

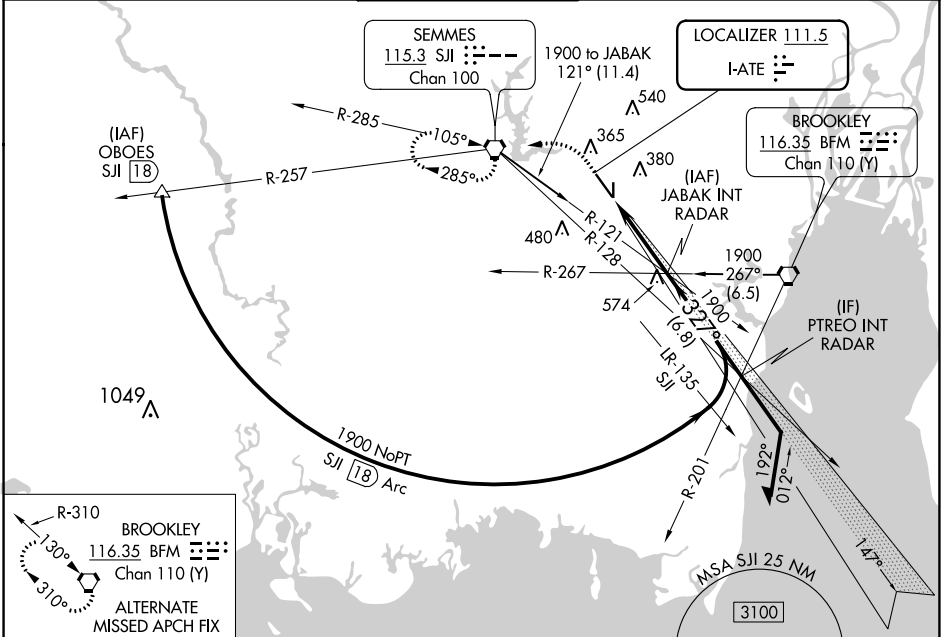
LOC I-ATE 111.5	APP CRS 327°	Rwy Idg 8502 TDZE 219 Apt Elev 219
---------------------------	------------------------	---

ILS or LOC RWY 33

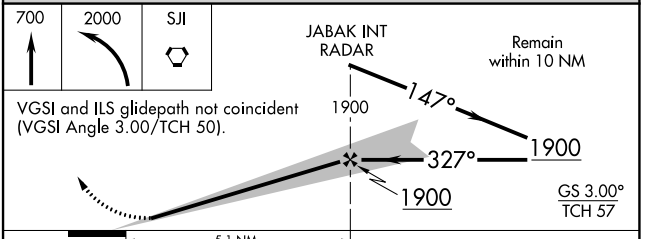
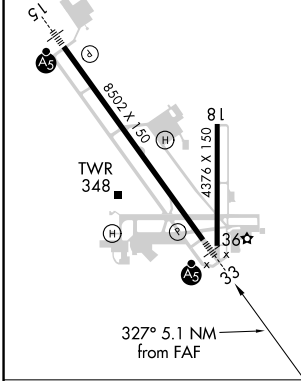
MOBILE RGNL (MOB)

* RVR 1800 authorized with use of FD or AP or HUD to DA. 	MISSED APPROACH: Climb to 700 then climbing left turn to 2000 direct SJI VORTAC and hold.
--	---

ATIS 124.75 257.85	MOBILE APP CON * 118.5 269.3	MOBILE TOWER * 118.3 (CTAF) 239.0	GND CON 121.9 348.6	CLNC DEL 119.85	UNICOM 122.95
------------------------------	--	---	-------------------------------	---------------------------	-------------------------



ELEV 219	TDZE 219
MIRL Rwy 18-36 HIRL Rwy 15-33	



CATEGORY	A	B	C	D
S-ILS 33*	419/24 200 (200-½)			
S-LOC 33	660/24	441 (500-½)	660/45	441 (500-¾)
<input checked="" type="checkbox"/> CIRCLING	680-1	461 (500-1)	740-1½ 521 (600-1½)	780-2 561 (600-2)

SE-4, 22 FEB 2024 to 21 MAR 2024

SE-4, 22 FEB 2024 to 21 MAR 2024

WAAS CH 97506 W15A	APP CRS 147°	Rwy Idg TDZE Apt Elev	8502 215 219
--	------------------------	-----------------------------	---

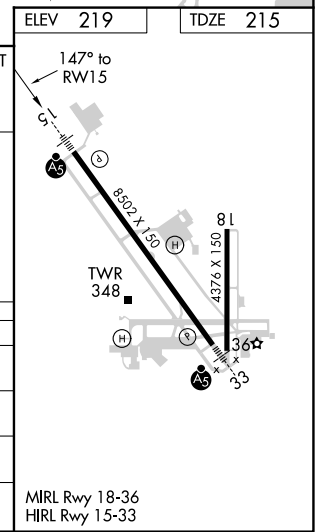
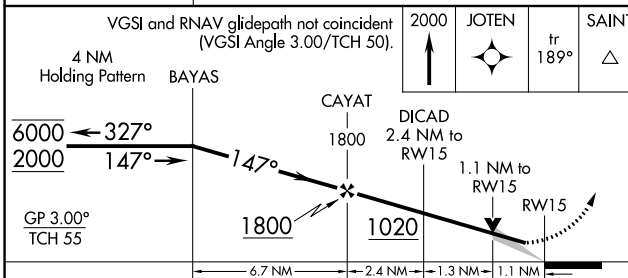
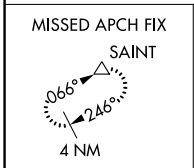
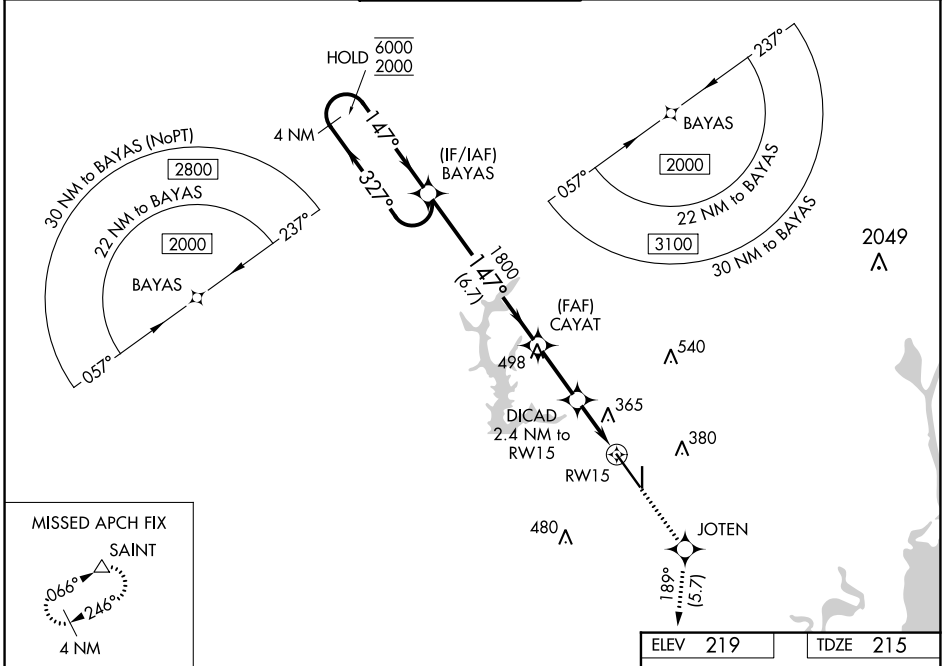
RNAV (GPS) RWY 15

MOBILE RGNL (MOB)

RNP APCH - GPS.		MOBILE TOWER ★		GND CON	CLNC DEL	UNICOM
▼ For uncompensated Baro-VNAV systems, LNAV/VNAV NA below -4°C or above 42°C. For inop ALS, increase LNAV Cats C/D visibility to RVR 6000. * RVR 1800 authorized with use of FD or AP or HUD to DA.		118.3 (CTAF) 239.0		121.9 348.6	119.85	122.95
ATIS	MOBILE APP CON ★					
124.75 257.85	118.5 269.3					



MISSED APPROACH: Climb to 2000 direct JOTEN and on track 189° to SAINT and hold.



CATEGORY	A	B	C	D
LPV DA*		415/24	200 (200-½)	
LNAV/VNAV DA		636/45	421 (500-¾)	
LNAV MDA		620/40	405 (500-¾)	
CIRCLING	680-1	461 (500-1)	740-1½ 521 (600-1½)	780-2 561 (600-2)

MIRL Rwy 18-36
HIRL Rwy 15-33

SE-4, 22 FEB 2024 to 21 MAR 2024

SE-4, 22 FEB 2024 to 21 MAR 2024

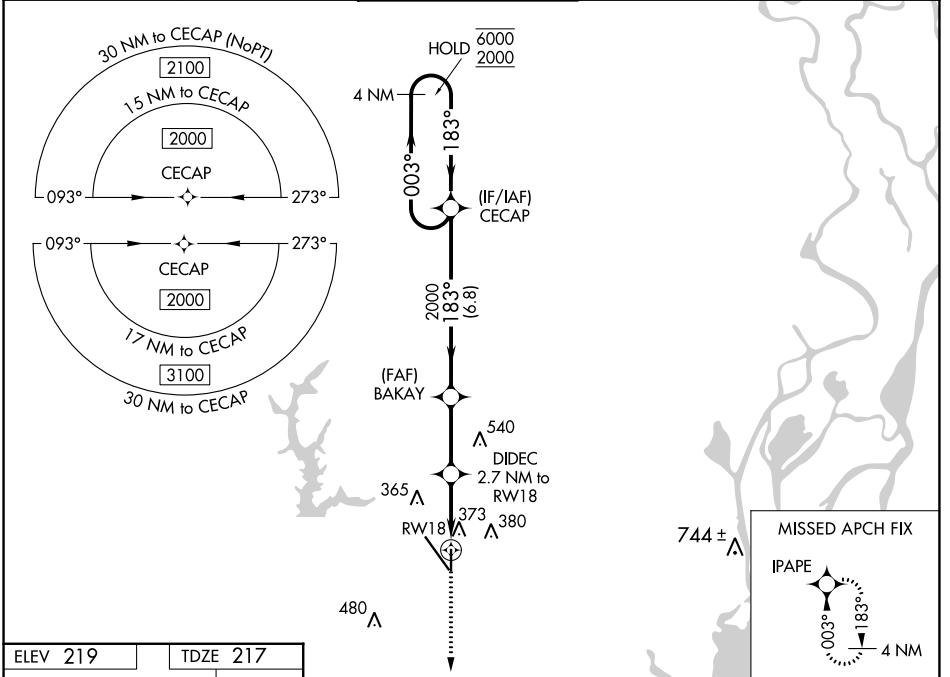
WAAS CH 78128 W18A	APP CRS 183°	Rwy ldg TDZE Apt Elev	4376 217 219
--	------------------------	-----------------------------	---

RNAV (GPS) RWY 18

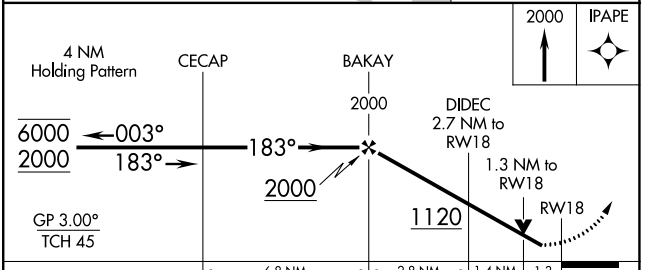
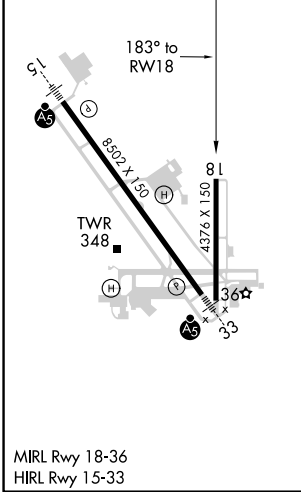
MOBILE RGNL (MOB)

RNP APCH - GPS.	MISSED APPROACH: Climb to 2000 direct IPAPE and hold.
▼ For uncompensated Baro-VNAV systems, LNAV/VNAV NA below -4°C or above 42°C. Rwy 18 helicopter visibility reduction below 3/4 SM NA.	

ATIS 124.75 257.85	MOBILE APP CON ★ 118.5 269.3	MOBILE TOWER ★ 118.3 (CTAF) 239.0	GND CON 121.9 348.6	CLNC DEL 119.85	UNICOM 122.95
------------------------------	--	---	-------------------------------	---------------------------	-------------------------



ELEV 219	TDZE 217
----------	----------



CATEGORY	A	B	C	D
LPV DA	508-1 291 (300-1)			
LNAV/VNAV DA	624-1 3/8 407 (500-1 3/8)			
LNAV MDA	640-1	423 (500-1)	640-1 1/4	423 (500-1 1/4)
C CIRCLING	680-1	461 (500-1)	740-1 1/2	780-2
			521 (600-1 1/2)	561 (600-2)

SE-4, 22 FEB 2024 to 21 MAR 2024

SE-4, 22 FEB 2024 to 21 MAR 2024

WAAS CH 69306 W33A	APP CRS 327°	Rwy Idg TDZE 219 Apt Elev 219	8502
--	------------------------	---	-------------

RNAV (GPS) RWY 33

MOBILE RGNL (MOB)

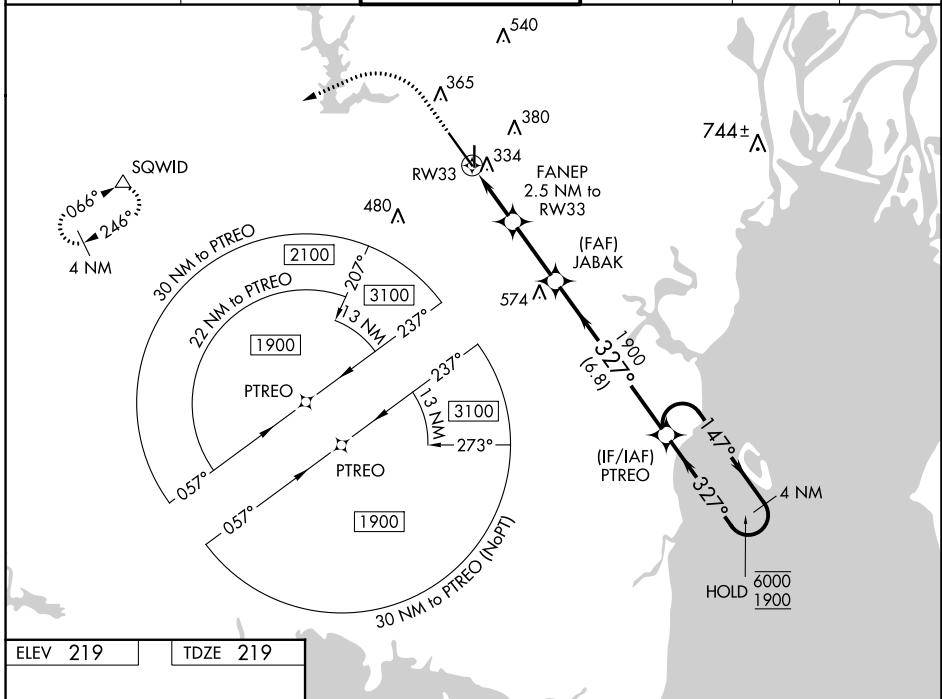
RNP APCH - GPS.

ASR For uncompensated Baro-VNAV systems, LNAV/VNAV NA below -4°C or above 54°C. For inop ALS, increase LNAV/VNAV all Cots visibility to RVR 4500.
* RVR 1800 authorized with use of FD or AP or HUD to DA.



MISSED APPROACH: Climb to 700 then climbing left turn to 2000 direct SQWID and hold.

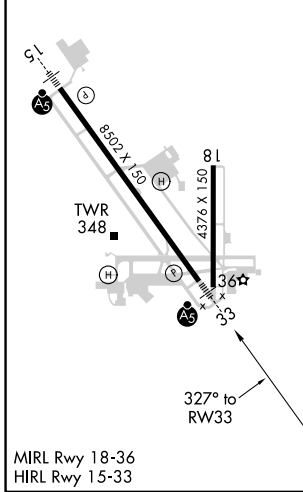
ATIS 124.75 257.85	MOBILE APP CON ★ 118.5 269.3	MOBILE TOWER ★ 118.3 (CTAF) 239.0	GND CON 121.9 348.6	CLNC DEL 119.85	UNICOM 122.95
------------------------------	--	---	-------------------------------	---------------------------	-------------------------



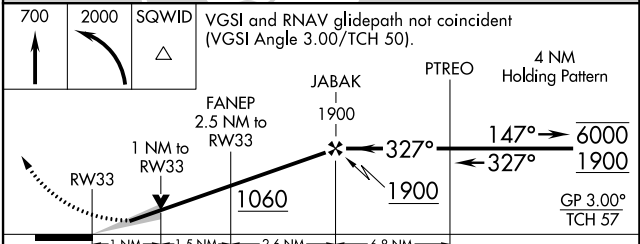
SE-4, 22 FEB 2024 to 21 MAR 2024

SE-4, 22 FEB 2024 to 21 MAR 2024

ELEV 219	TDZE 219
-----------------	-----------------



MIRL Rwy 18-36
HIRL Rwy 15-33



CATEGORY	A	B	C	D
LPV DA*	419/24		200 (200-½)	
LNAV/VNAV DA	505/24		286 (300-½)	
LNAV MDA	600/24		381 (400-½)	
			600/35 381 (400-⅝)	
C CIRCLING	680-1 461 (500-1)		740-1½ 521 (600-1½) 780-2 561 (600-2)	

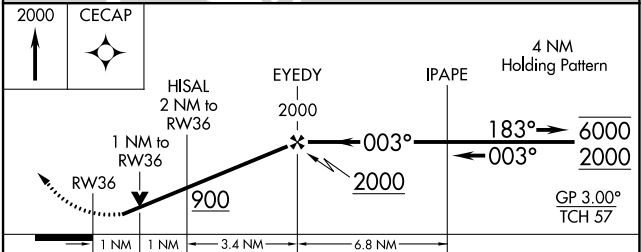
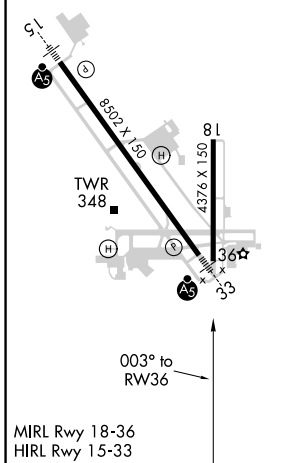
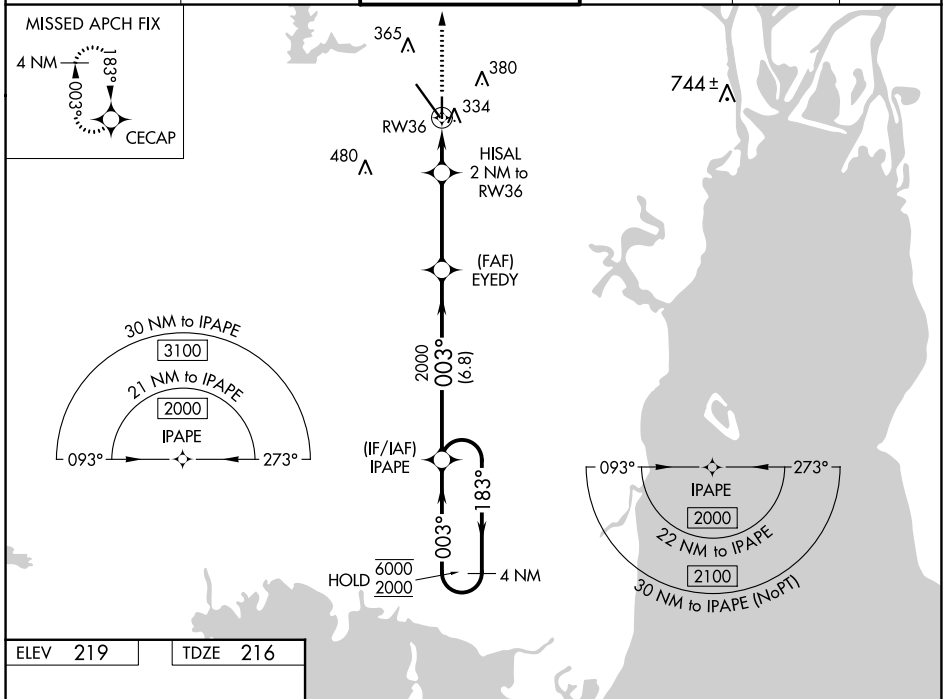
WAAS CH 50215 W36A	APP CRS 003°	Rwy Idg 4376 TDZE 216 Apt Elev 219
--	------------------------	---

RNAV (GPS) RWY 36

MOBILE RGNL (MOB)

RNP APCH - GPS.		MISSED APPROACH: Climb to 2000 direct CECAP and hold.			
<p>▼ Rwy 36 helicopter visibility reduction below 3/4 SM NA. For uncompensated Baro-VNAV systems, LNAV/VNAV NA below -4°C or above 54°C.</p>					

ATIS 124.75 257.85	MOBILE APP CON ★ 118.5 269.3	MOBILE TOWER ★ 118.3 (CTAF) 0 239.0	GND CON 121.9 348.6	CLNC DEL 119.85	UNICOM 122.95
------------------------------	--	---	-------------------------------	---------------------------	-------------------------



CATEGORY	A	B	C	D
LPV DA		482-7/8	266 (300-7/8)	
LNAV/VNAV DA		505-7/8	289 (300-7/8)	
LNAV MDA	600-1	384 (400-1)	600-1 1/8	384 (400-1 1/8)
<input checked="" type="checkbox"/> CIRCLING	680-1	461 (500-1)	740-1 1/2 521 (600-1 1/2)	780-2 561 (600-2)

SE-4, 22 FEB 2024 to 21 MAR 2024

SE-4, 22 FEB 2024 to 21 MAR 2024

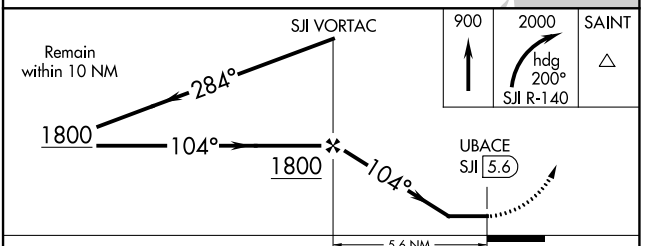
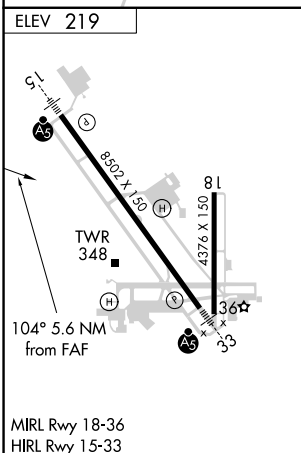
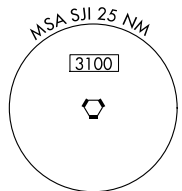
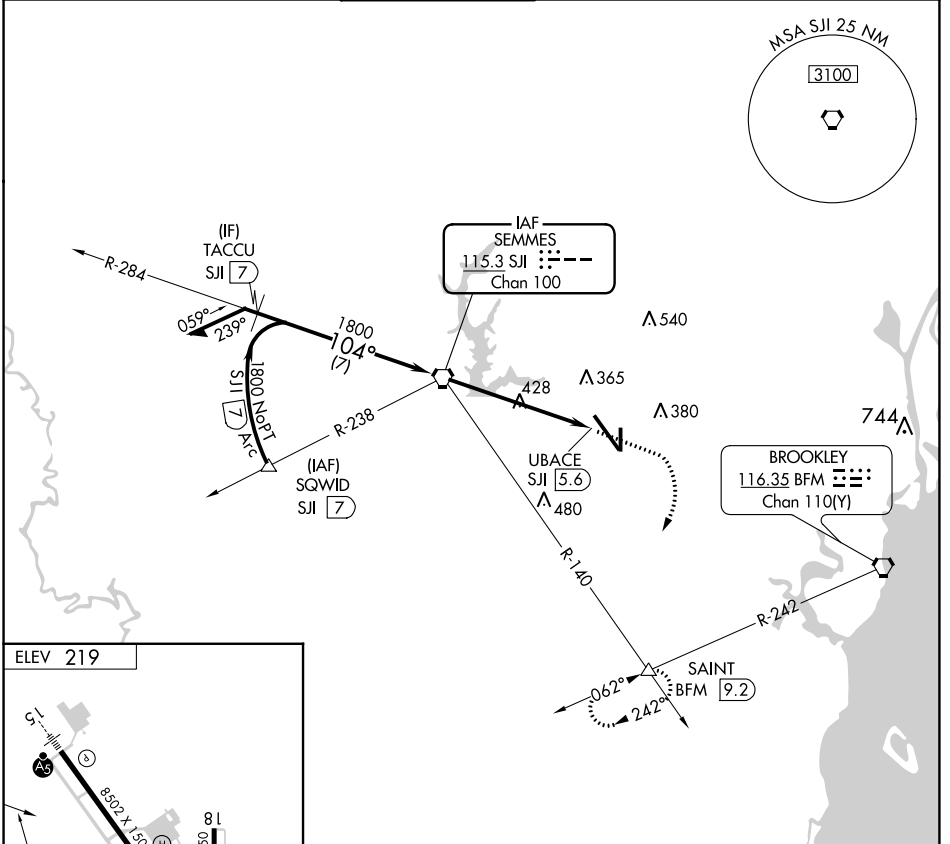
VORTAC SJI	APP CRS	Rwy Idg TDZE	N/A
115.3	104°	Apt Elev	N/A
Chan 100			219

VOR or TACAN-A

MOBILE RGNL (MOB)

<p>ASR</p>	MISSED APPROACH: Climb to 900 then climbing right turn to 2000 on heading 200° and SJI R-140 to SAINT INT/BFM 9.2 DME and hold.				
------------	---	--	--	--	--

ATIS	MOBILE APP CON ★	MOBILE TOWER ★	GND CON	CLNC DEL	UNICOM
124.75 257.85	118.5 269.3	118.3 (CTAF) 239.0	121.9 348.6	119.85	122.95



FAF to MAP 5.6 NM					
Knots	60	90	120	150	180
Min:Sec	5:36	3:44	2:48	2:14	1:52
CATEGORY	A	B	C	D	
CIRCLING	680-1	461 (500-1)	740-1½ 521 (600-1½)	780-2 561 (600-2)	

SE-4, 22 FEB 2024 to 21 MAR 2024

SE-4, 22 FEB 2024 to 21 MAR 2024